

# C-3814

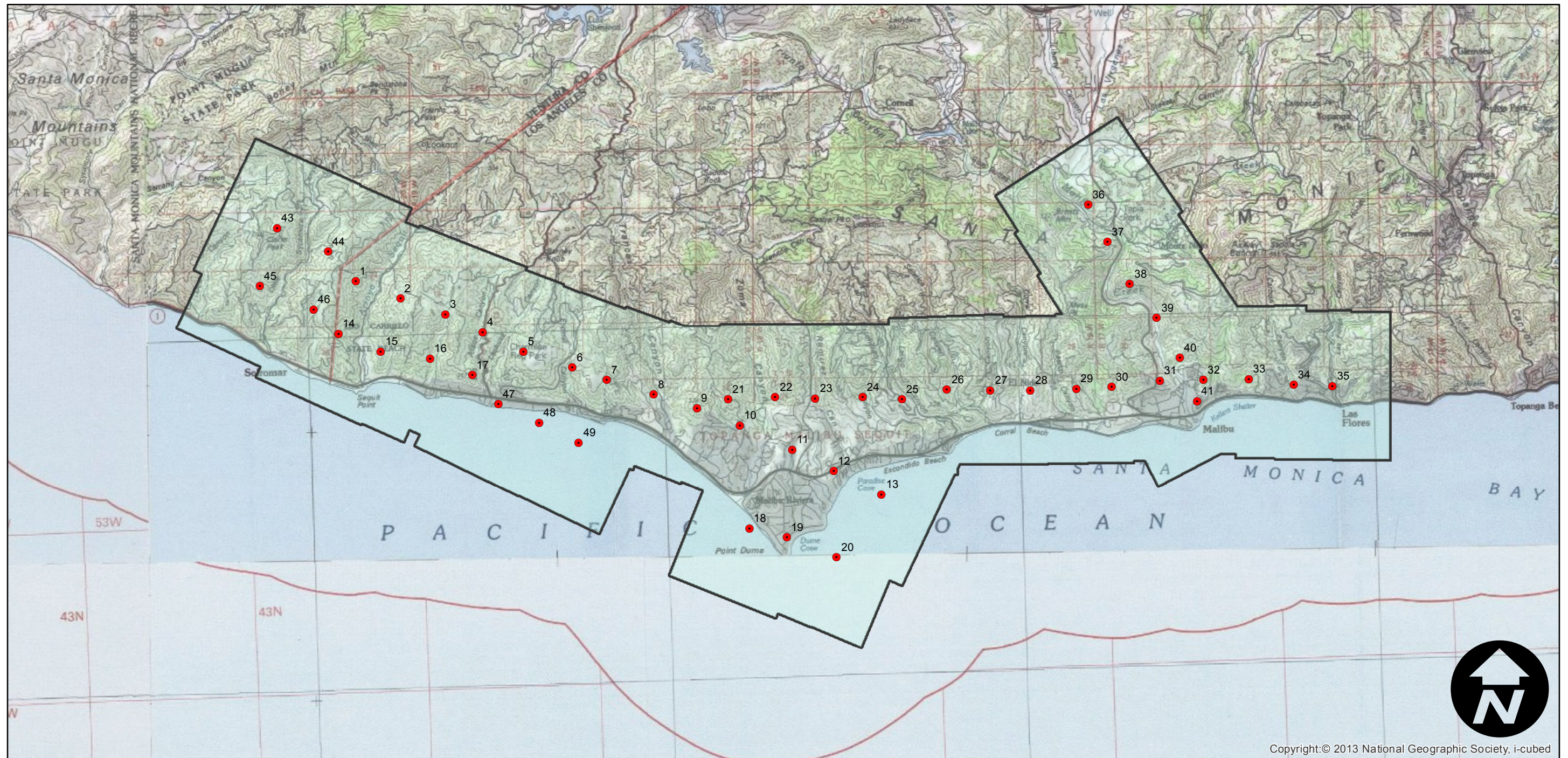
Counties: Los Angeles  
Flight date(s): 12-22-1935  
Scale: 1:18,000  
Overlap: 60%

Note: Vicinity of Point Dume and Malibu: Los Flores to Solromar, and part of Malibu Canyon Road. Imagery acquired from Teledyne, Inc., 1986 and Whittier College, January 2013. Nitrate negatives scanned May 2015.

## FLIGHT LOCATION



Complete Metadata:  
<http://www.library.ucsb.edu/mil/aerial-photography-tools>



Copyright:© 2013 National Geographic Society, i-cubed

