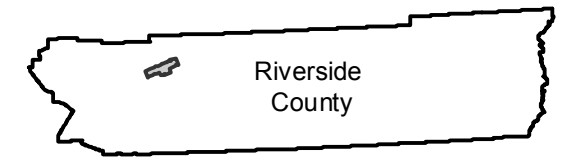


C-3152

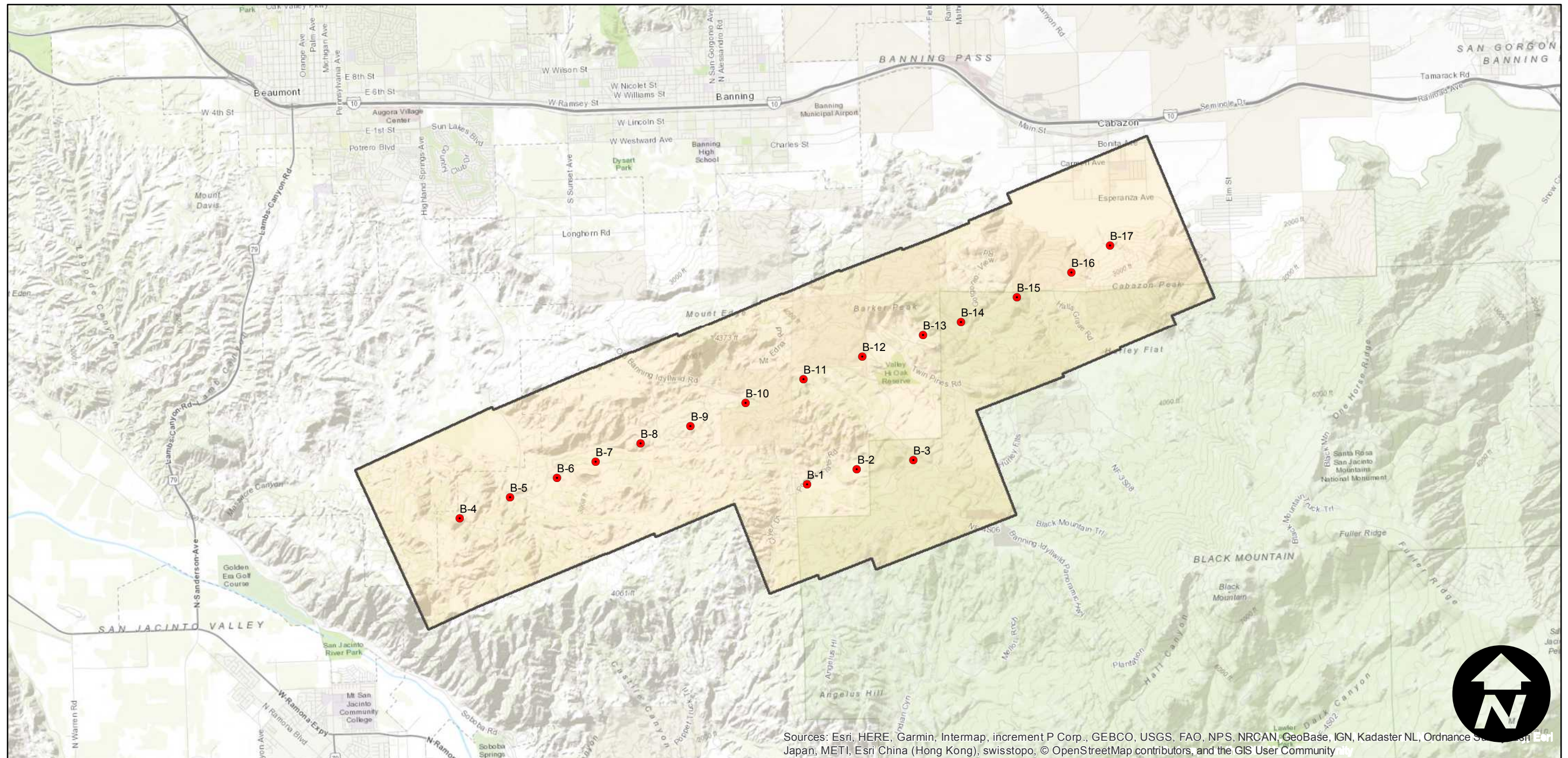
Counties: Riverside
Flight date(s): 08-28-1934
Scale: 1:18,000
Overlap: 60%

Note: Vicinity of Beaumont; Cabazon Peak to
Massacre Canyon. Acquired from Whittier College,
January 2013. Nitrate negatives scanned, April
2015.

FLIGHT LOCATION



Complete Metadata:
<https://www.library.ucsb.edu/src/airphotos/aerial-photography-information>



Sources: Esri, HERE, Garmin, Intermap, increment P Corp., GEBCO, USGS, FAO, NPS, NRCAN, GeoBase, IGN, Kadaster NL, Ordnance Survey, Esri Japan, METI, Esri China (Hong Kong), swisstopo, © OpenStreetMap contributors, and the GIS User Community

0 1.5 3 6 Miles

Index to Aerial Photography
Page 1 of 1

Scale of this index: 1:90,000