

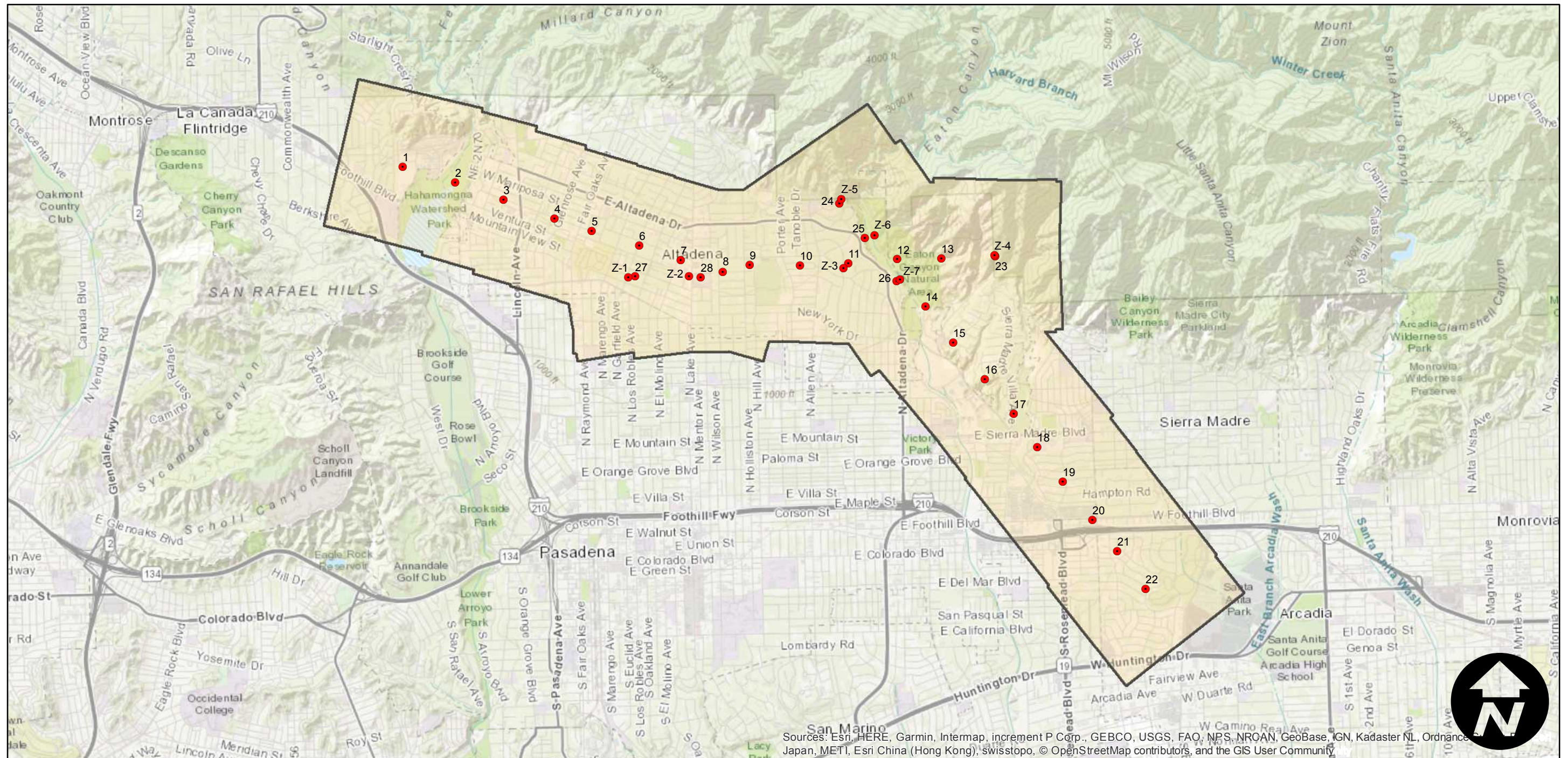
# C-3124

Counties: Los Angeles  
Flight date(s): 07-31-1934  
Scale: 1:9,600  
Overlap: 60-95%

Complete Metadata:  
<https://www.library.ucsb.edu/src/airphotos/aerial-photography-information>

Note: Arroyo Seco area: Altadena to Sierra Madre.  
Acquired from Whittier College, January 2013. Nitrate  
negatives scanned, April 2015.

## FLIGHT LOCATION



Sources: Esri, HERE, Garmin, Intermap, increment P Corp., GEBCO, USGS, FAO, NPS, NROAN, GeoBase, IGN, Kadaster NL, Ordnance Survey, Esri Japan, METI, Esri China (Hong Kong), swisstopo, © OpenStreetMap contributors, and the GIS User Community

