

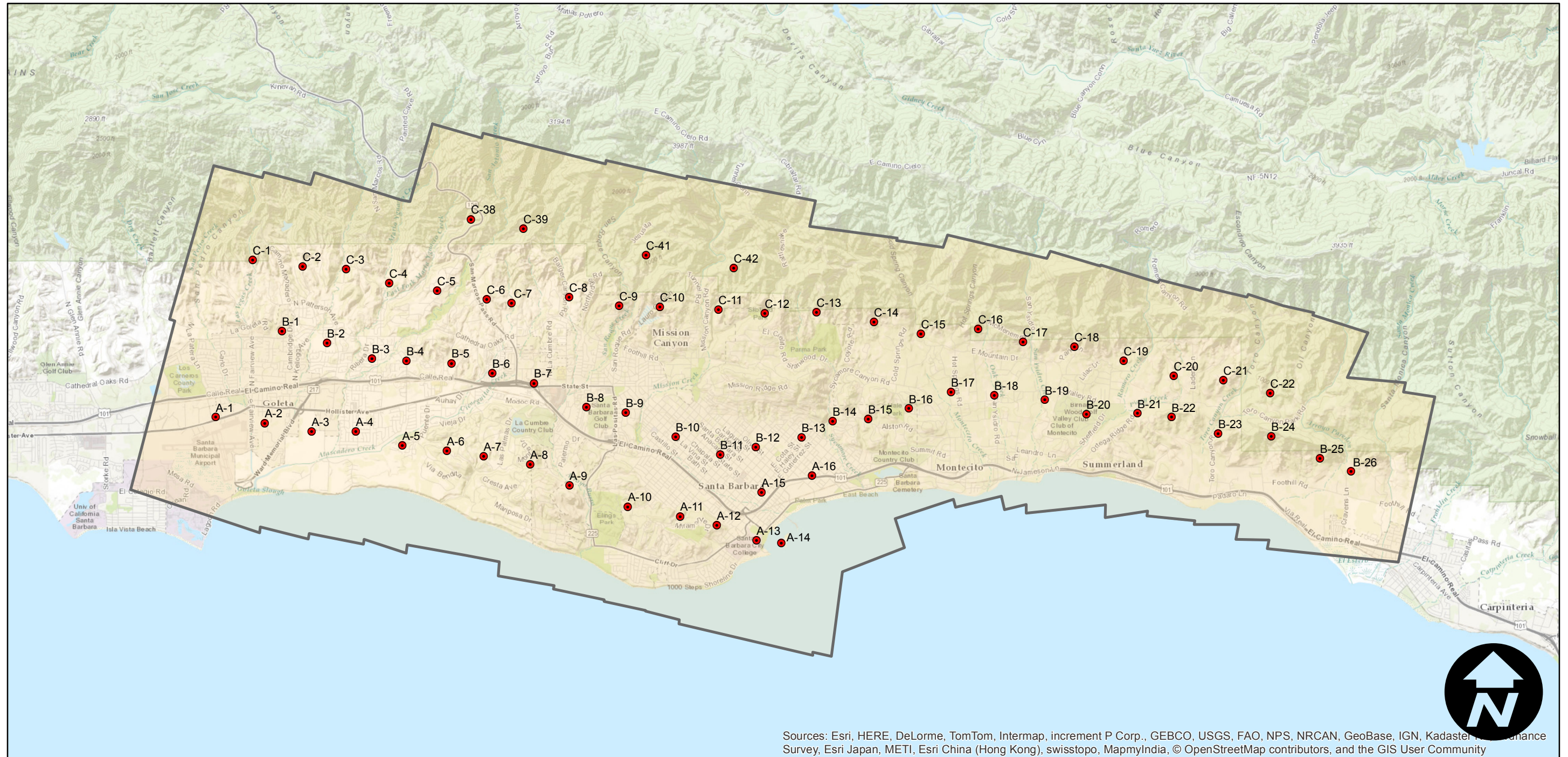
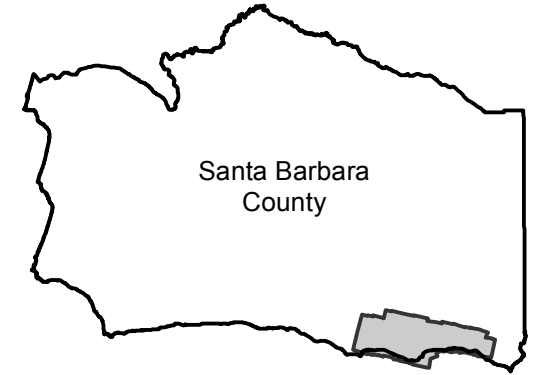
C-311C

Counties: Santa Barbara County
Flight date(s): 01-01-1928 to 12-31-1928
Scale: 1:18,000
Overlap: 60%

Note: Santa Barbara and vicinity. Prints acquired from Teledyne, Inc. (1986) were made from copy negatives that were made from original nitrate negatives; these copies were scanned (2010). Original prints and nitrate film negatives acquired from Whittier College, January 2013.

Complete Metadata:
<http://www.library.ucsb.edu/mil/aerial-photography-tools>

FLIGHT LOCATION



Sources: Esri, HERE, DeLorme, TomTom, Intermap, increment P Corp., GEBCO, USGS, FAO, NPS, NRCAN, GeoBase, IGN, Kadaster, Survey, Esri Japan, METI, Esri China (Hong Kong), swisstopo, MapmyIndia, © OpenStreetMap contributors, and the GIS User Community

