

C-3064

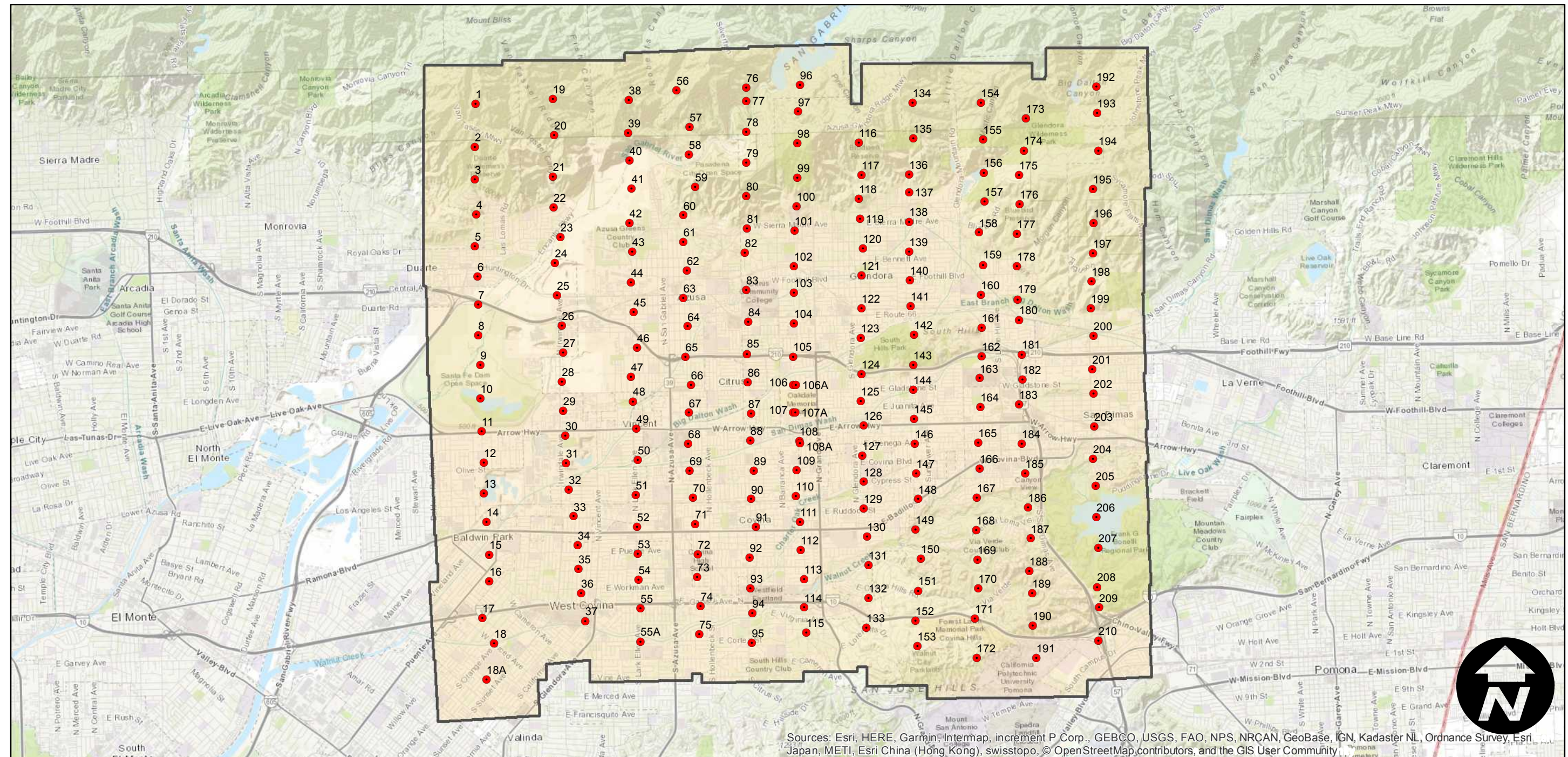
Counties: Los Angeles
Flight date(s): 06-18-1934
Scale: 1:9,600
Overlap: 60-95%

Note: Vicinity of Azusa, Glendora, Covina, Irwindale, and San Dimas. Copy negatives acquired from Teledyne, Inc. in 1986 were made from original nitrate film. Prints and nitrate film acquired from Whittier College, January 2013. Nitrate negatives scanned, April 2015.

FLIGHT LOCATION



Complete Metadata:
<https://www.library.ucsb.edu/src/airphotos/aerial-photography-information>



Sources: Esri, HERE, Garmin, Intermap, increment P Corp., GEBCO, USGS, FAO, NPS, NRCAN, GeoBase, IGN, Kadaster NL, Ordnance Survey, Esri, Japan, METI, Esri China (Hong Kong), swisstopo, © OpenStreetMap contributors, and the GIS User Community

