

C-297A

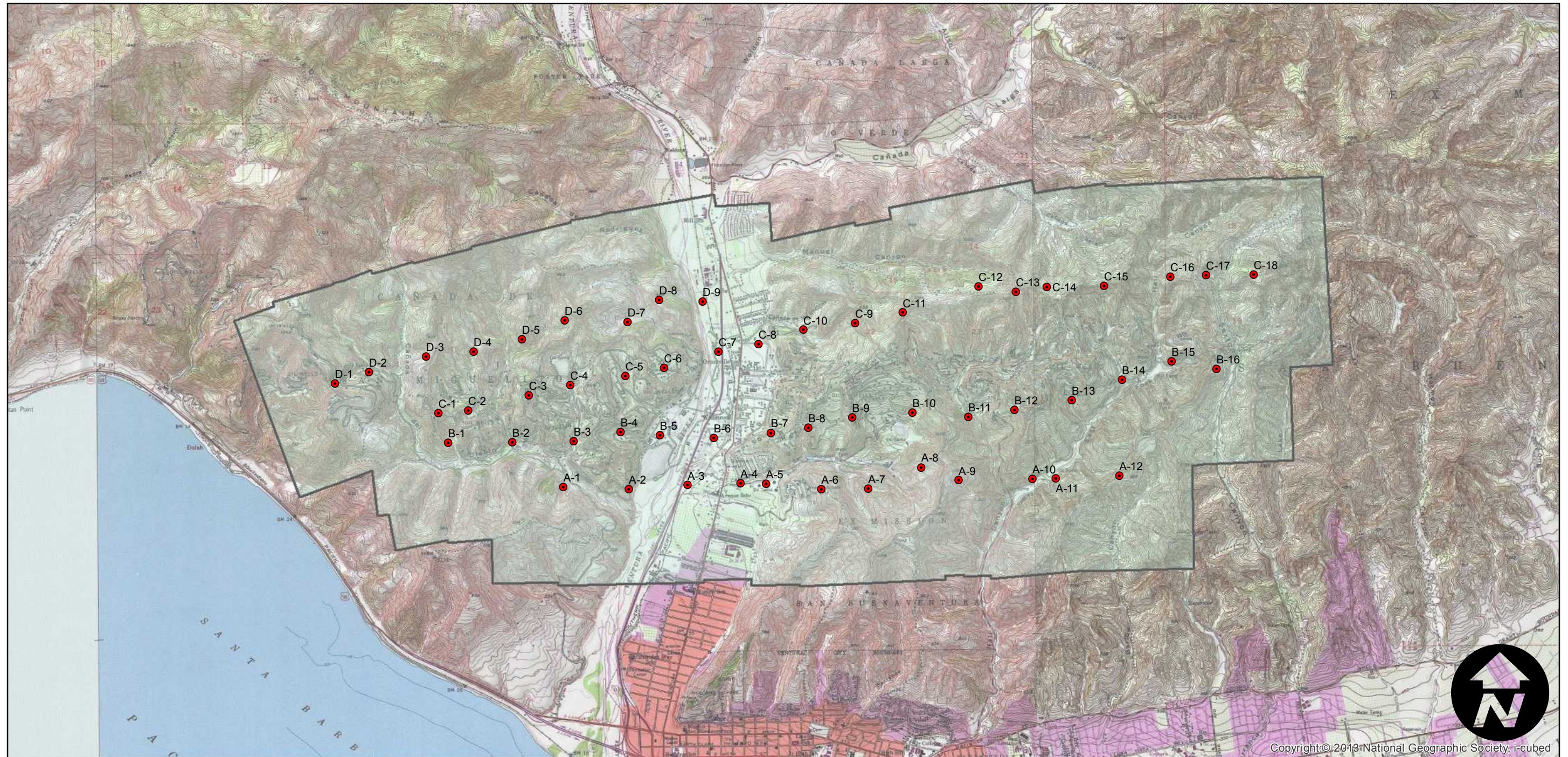
Counties: Ventura
Flight date(s): 09-09-1928
Scale: 1:10,000
Overlap: 60%

Complete Metadata:
<http://www.library.ucsb.edu/mil/aerial-photography-tools>

Note: Hills northeast and northwest of city of Ventura (present-day oil fields).
Overlap within flightlines is inconsistent. Copy negatives acquired from Teledyne, Inc. (1986) were reproduced from original nitrate film. Prints acquired from Whittier College, January 2013.

- MIL owns frame
- MIL does not own frame

FLIGHT LOCATION



0 1 2 4 Miles

Index to Aerial Photography
Page 1 of 1

Scale of this index: 1:50,000



Copyright: © 2013 National Geographic Society, i-cubed