

C-289

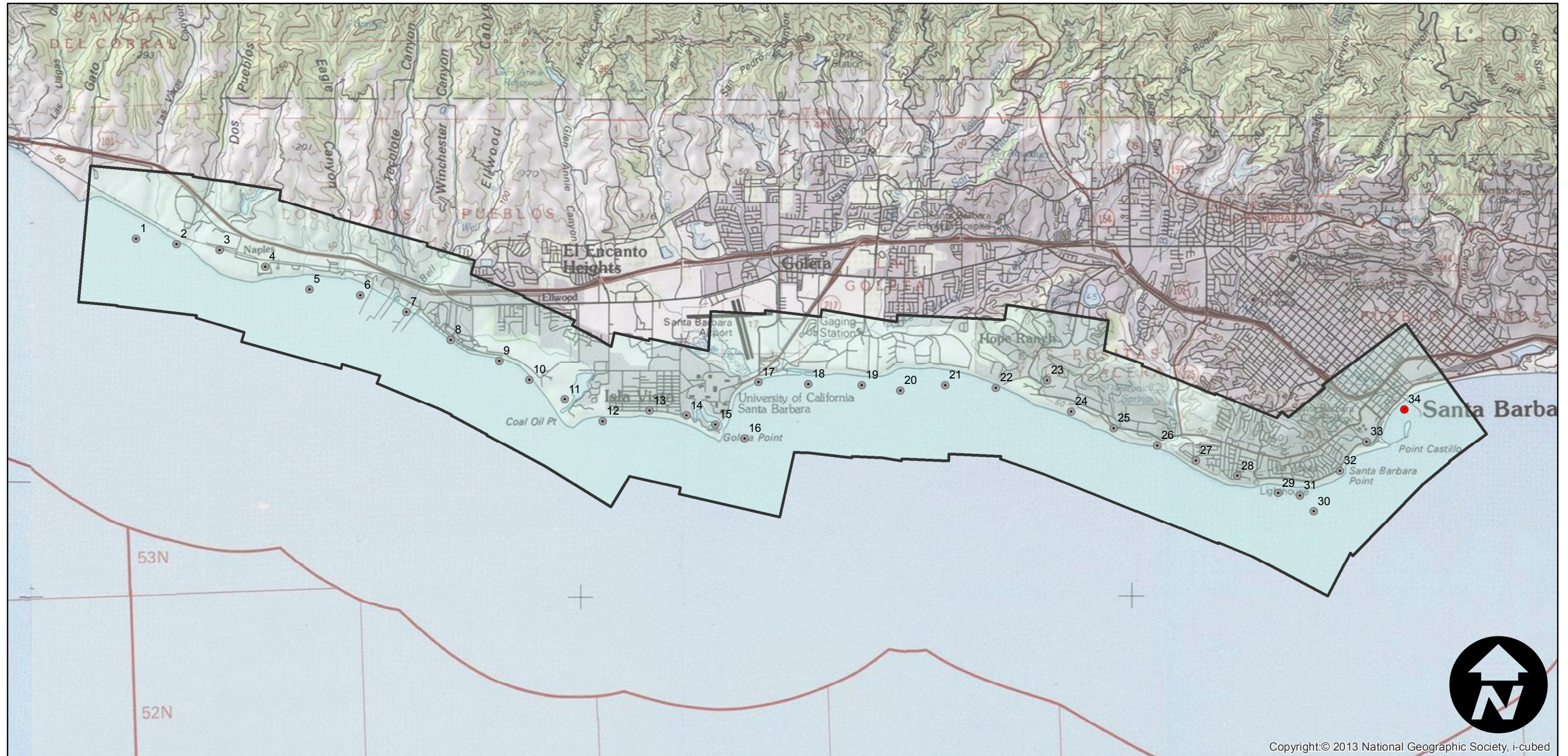
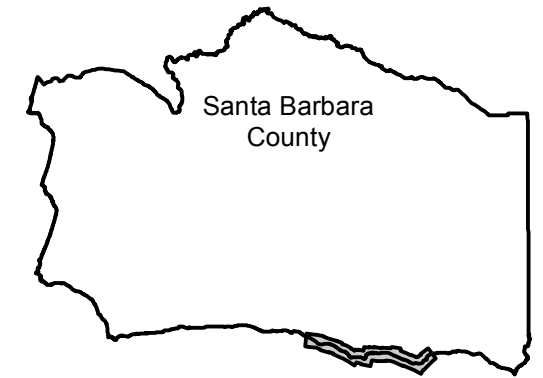
Counties: Santa Barbara
Flight date(s): 08-01-1928 to 08-31-1928
Scale: 1:12,000
Overlap: 60%

Complete Metadata:
<http://www.library.ucsb.edu/mil/aerial-photography-tools>

Note: Only frame number 34 is held (Stearns Wharf). Note frame number 34 is labeled as frame 38. Imagery acquired from Whittier College, January 2013.

- MIL owns frame
- MIL does not own frame

FLIGHT LOCATION



Copyright:© 2013 National Geographic Society, i-cubed

0 1.5 3 6 Miles

Index to Aerial Photography
Page 1 of 1

Scale of this index: 1:85,000