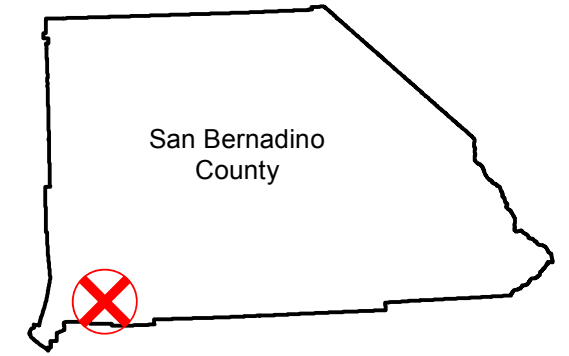


C-2689

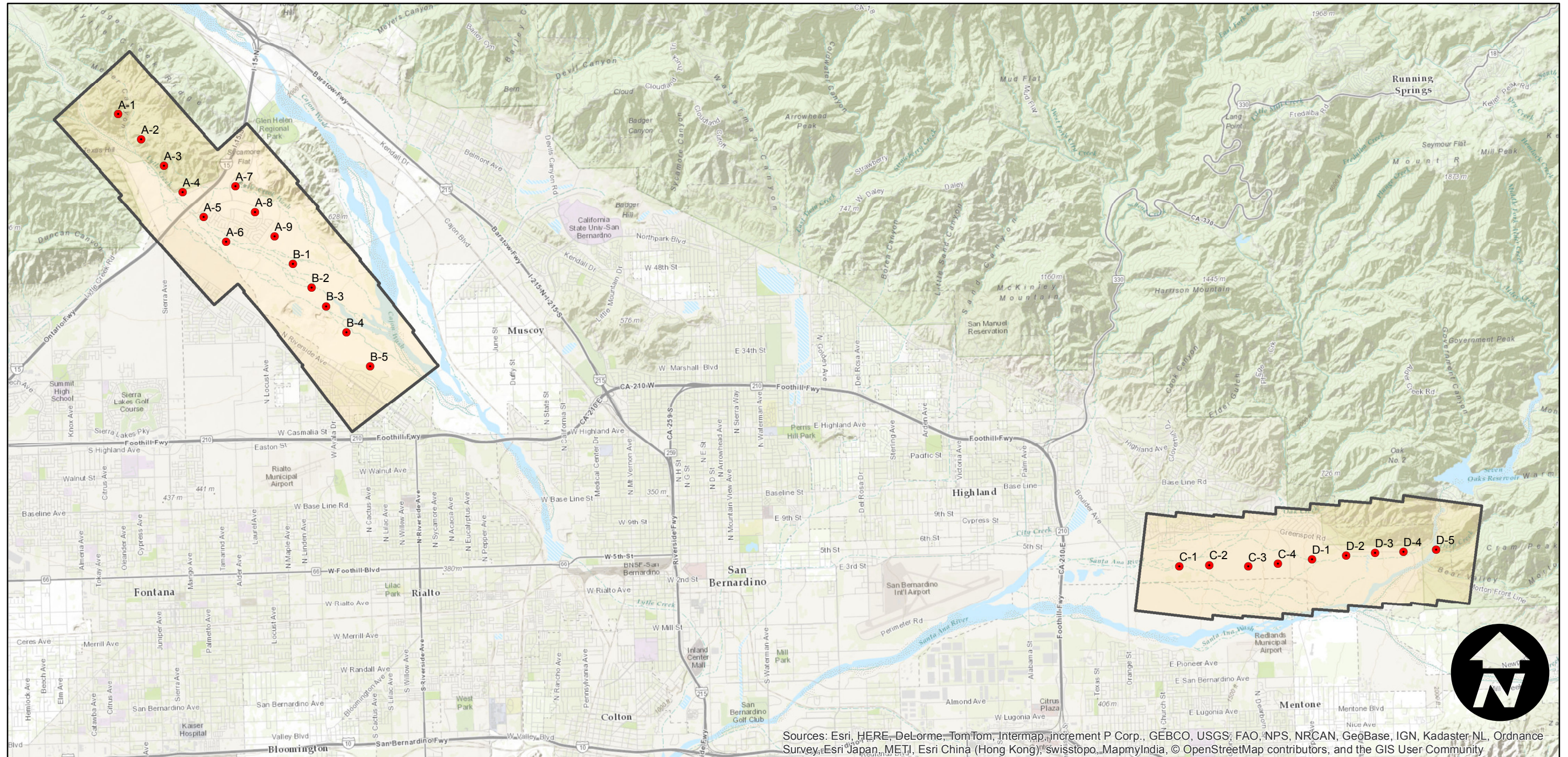
Counties: San Bernardino
Flight date(s): 08-03-1933
Scale: 1:7,200
Overlap: 60%

Note: Lytle Creek area (north of SR 210), and upper Santa Ana river from below Seven Oaks Reservoir to east of SR 210. Acquired from Whittier College, January 2013. Nitrate negatives scanned April 2015.

FLIGHT LOCATION



Complete Metadata:
<http://www.library.ucsb.edu/mil/aerial-photography-tools>



Sources: Esri, HERE, DeLorme, TomTom, Intermap, increment P Corp., GEBCO, USGS, FAO, NPS, NRCAN, GeoBase, IGN, Kadaster-NL, Ordnance Survey, Esri Japan, METI, Esri China (Hong Kong), swisstopo, MapmyIndia, © OpenStreetMap contributors, and the GIS User Community

0 2 4 8 Miles

Index to Aerial Photography
Page 1 of 1

Scale of this index: 1:100,000