

C-24223 (Roll 10)

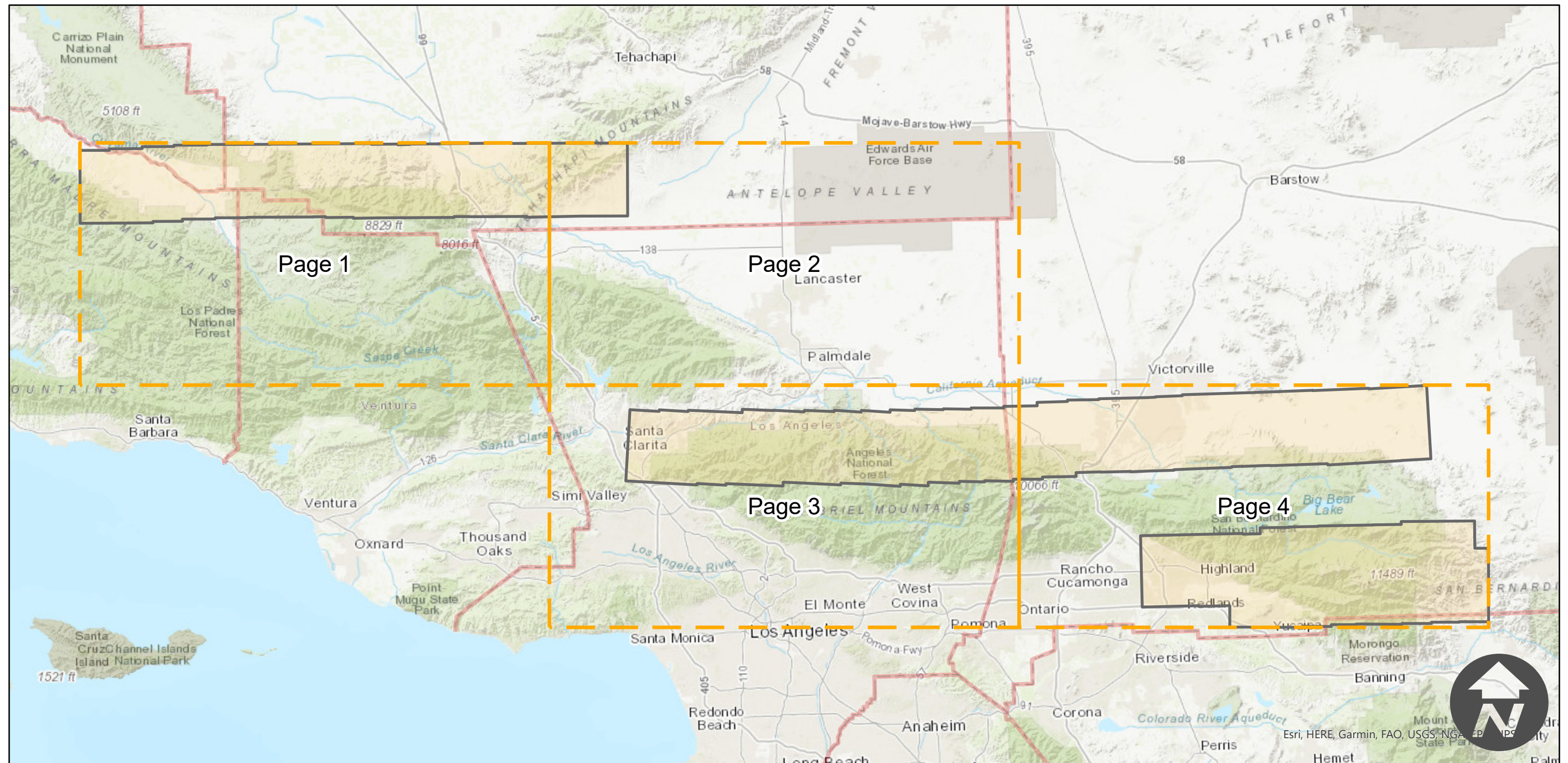
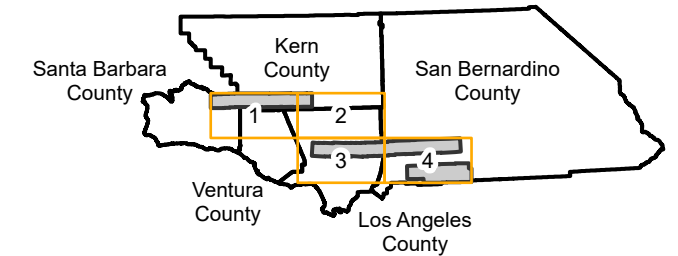
Counties: Los Angeles, Orange, Riverside, San Bernardino, San Diego, Ventura, Santa Barbara, Kern
Flight date(s): 11-23-1961 to 01-05-1962
Scale: 1:63,360
Overlap: 60%

Complete Metadata:
<https://www.library.ucsb.edu/src/airphotos/aerial-photography-information>

Note: Coverage includes nearly all of Los Angeles, Orange, and Ventura Counties. With partial coverage of Riverside and San Diego Counties. Imagery acquired from Whittier College, January 2013.

- MIL owns frame
- MIL does not own frame

FLIGHT LOCATION



0 15 30 60 Miles

Index to Aerial Photography
Page Key

Scale of this index: 1:870,000

C-24223 (Roll 10)

Counties: Los Angeles, Orange, Riverside, San Bernardino, San Diego, Ventura, Santa Barbara, Kern

Flight date(s): 11-23-1961 to 01-05-1962

Scale: 1:63,360

Overlap: 60%

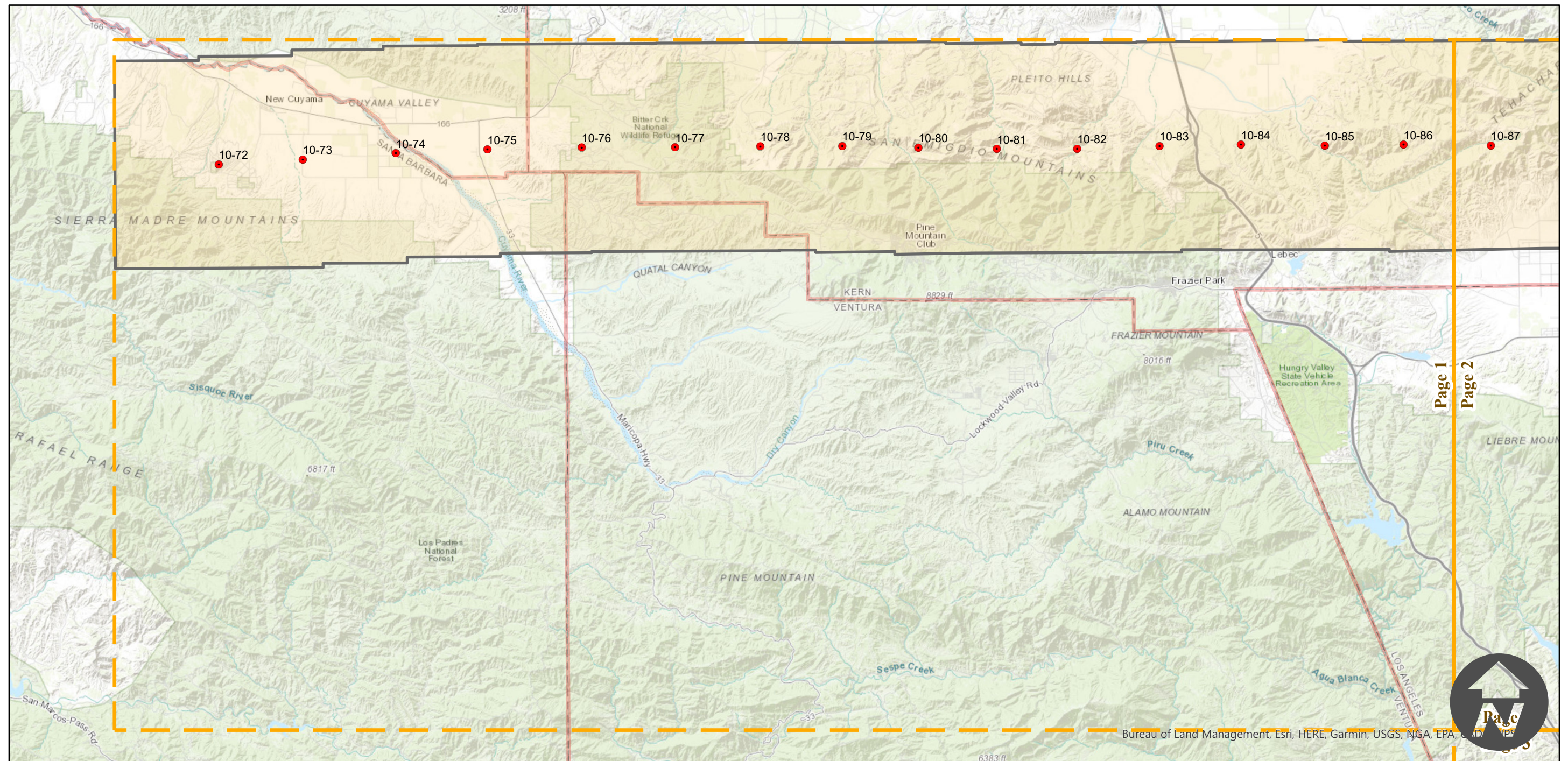
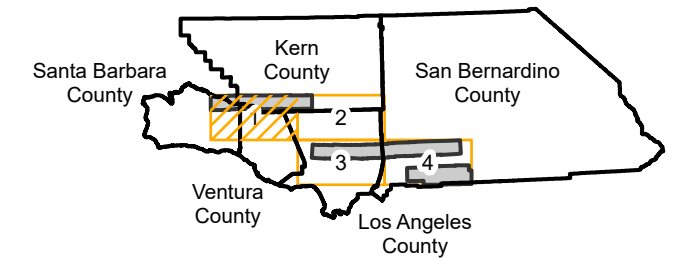
Complete Metadata:

<https://www.library.ucsb.edu/src/airphotos/aerial-photography-information>

Note: Coverage includes nearly all of Los Angeles, Orange, and Ventura Counties. With partial coverage of Riverside and San Diego Counties. Imagery acquired from Whittier College, January 2013.

- MIL owns frame
- MIL does not own frame

FLIGHT LOCATION



C-24223 (Roll 10)

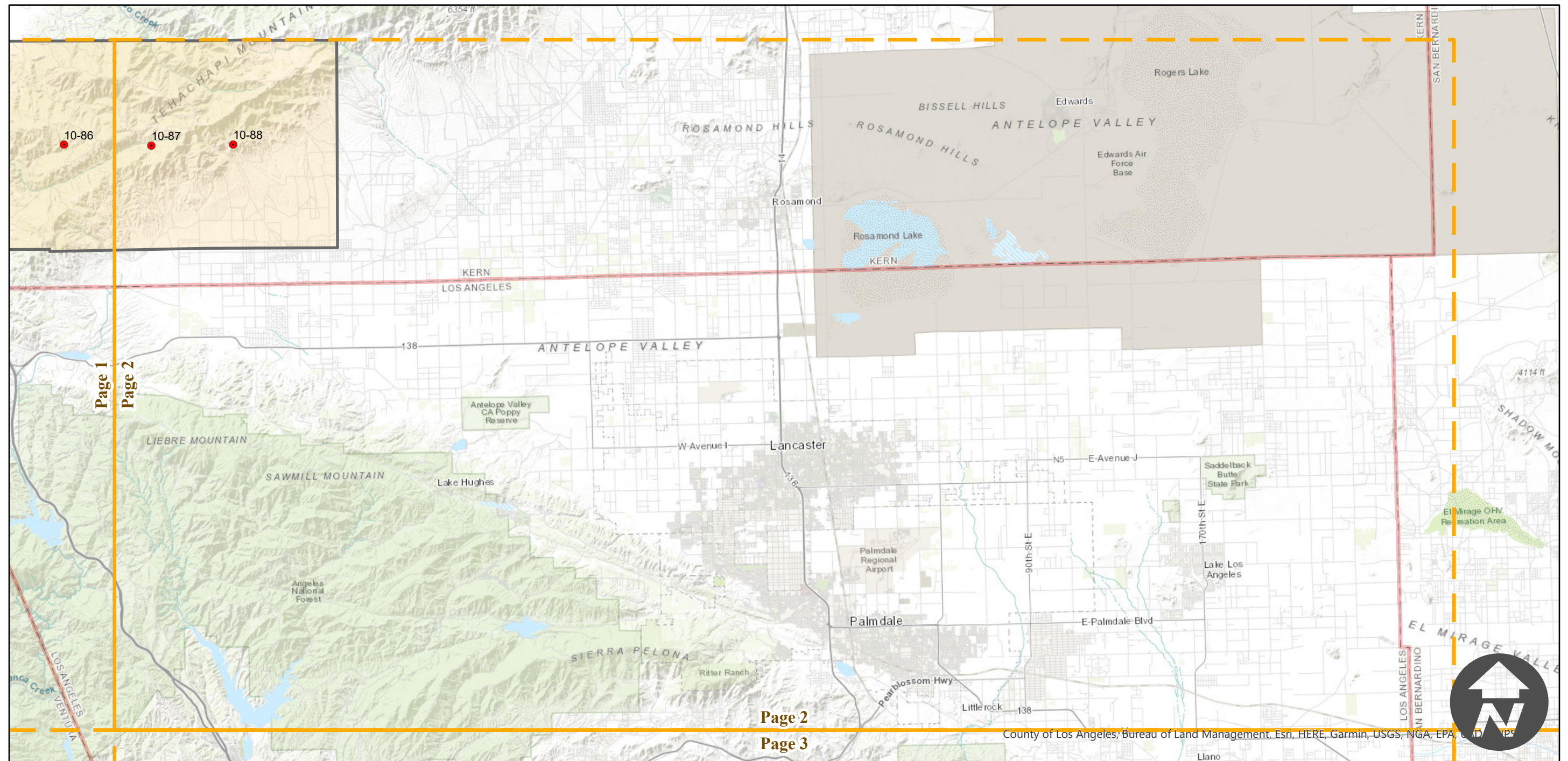
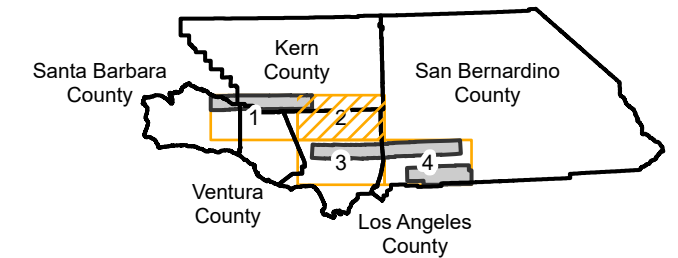
Counties: Los Angeles, Orange, Riverside, San Bernardino, San Diego,
Ventura, Santa Barbara, Kern
Flight date(s): 11-23-1961 to 01-05-1962
Scale: 1:63,360
Overlap: 60%

Complete Metadata:
<https://www.library.ucsb.edu/src/airphotos/aerial-photography-information>

Note: Coverage includes nearly all of Los Angeles, Orange, and Ventura Counties. With partial coverage of Riverside and San Diego Counties. Imagery acquired from Whittier College, January 2013.

- MIL owns frame
- MIL does not own frame

FLIGHT LOCATION



Index to Aerial Photography
Page 2 of 4

Scale of this index: 1:305,000

C-24223 (Roll 10)

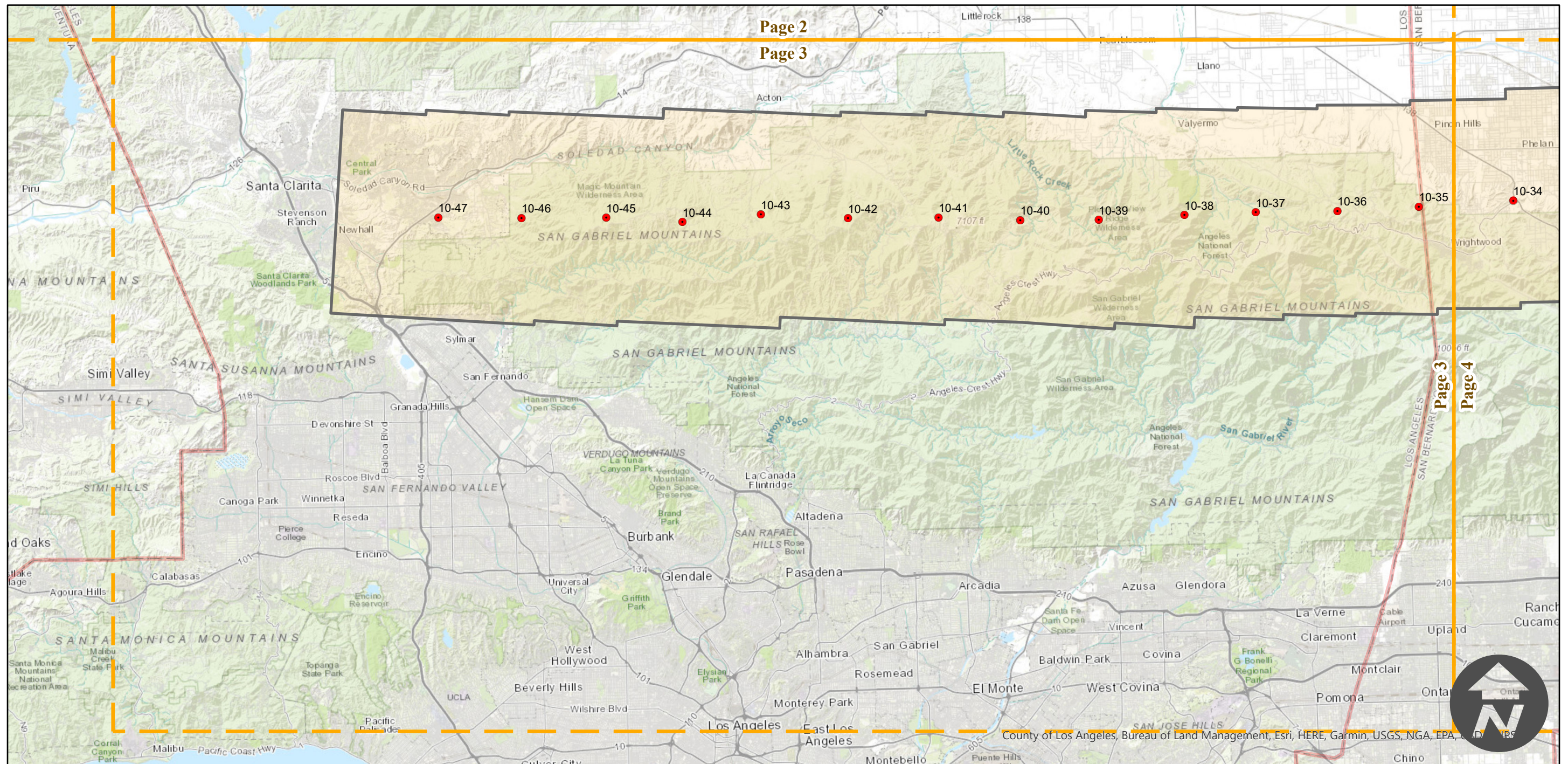
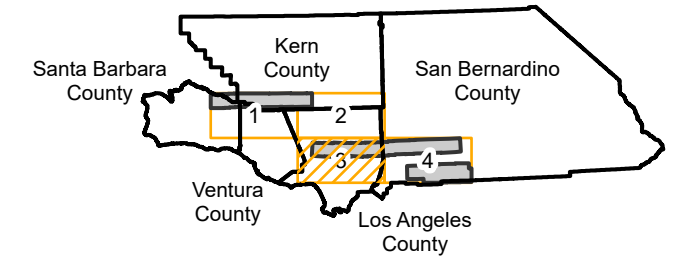
Counties: Los Angeles, Orange, Riverside, San Bernardino, San Diego, Ventura, Santa Barbara, Kern
Flight date(s): 11-23-1961 to 01-05-1962
Scale: 1:63,360
Overlap: 60%

Complete Metadata:
<https://www.library.ucsb.edu/src/airphotos/aerial-photography-information>

Note: Coverage includes nearly all of Los Angeles, Orange, and Ventura Counties. With partial coverage of Riverside and San Diego Counties. Imagery acquired from Whittier College, January 2013.

- MIL owns frame
- MIL does not own frame

FLIGHT LOCATION



0 5 10 20 Miles

Index to Aerial Photography
Page 3 of 4

Scale of this index: 1:305,000

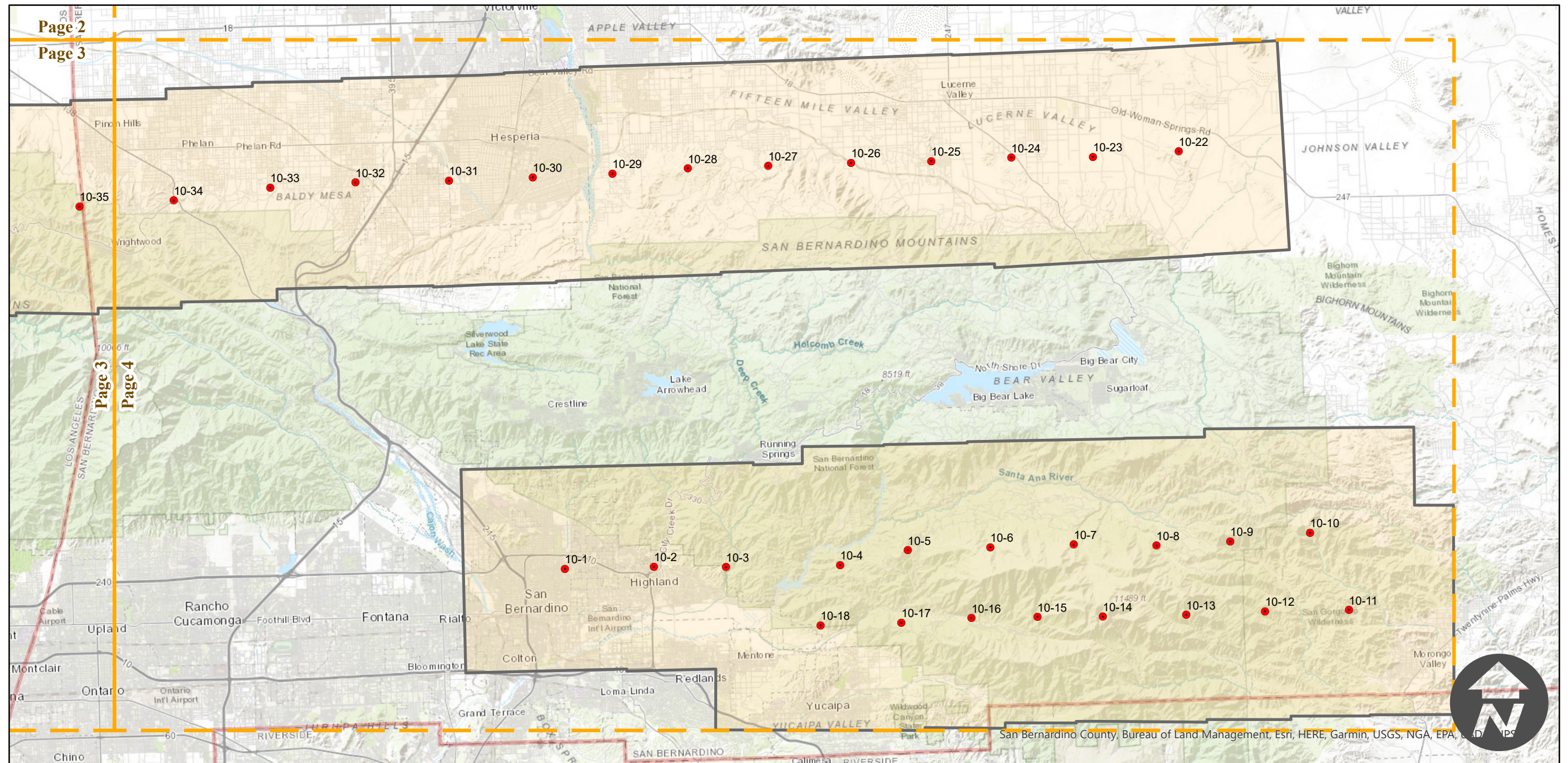
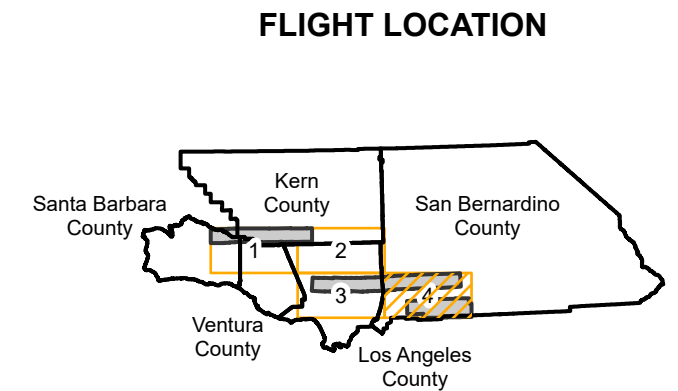
C-24223 (Roll 10)

Counties: Los Angeles, Orange, Riverside, San Bernardino, San Diego,
Ventura, Santa Barbara, Kern
Flight date(s): 11-23-1961 to 01-05-1962
Scale: 1:63,360
Overlap: 60%

Complete Metadata:
<https://www.library.ucsb.edu/src/airphotos/aerial-photography-information>

Note: Coverage includes nearly all of Los Angeles, Orange, and Ventura Counties. With partial coverage of Riverside and San Diego Counties. Imagery acquired from Whittier College, January 2013.

- MIL owns frame
- MIL does not own frame



0 5 10 20 Miles

Index to Aerial Photography
Page 4 of 4

Scale of this index: 1:305,000