

# C-2396 (Morris Reservoir Dam)

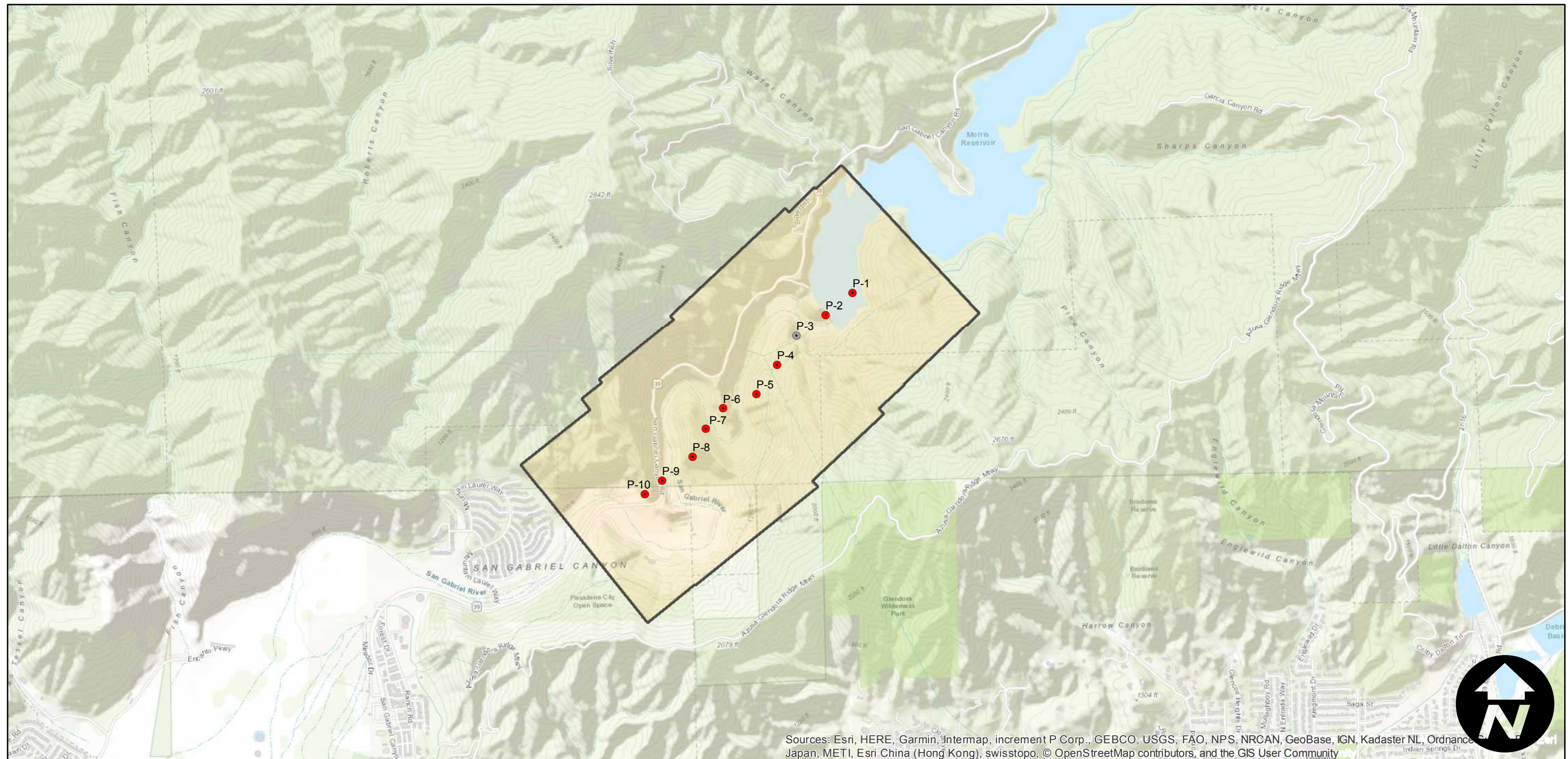
Counties: Los Angeles  
Flight date(s): 10-14-1932 to 10-22-1932  
Scale: 1:5,400  
Overlap: 60-80%

Complete Metadata:  
<https://www.library.ucsb.edu/src/airphotos/aerial-photography-information>

Note: Angeles National Forest; Browns Gulch, Bichota Canyon, vicinity of Devils Canyon, Venedo Canyon, West Fork of the San Gabriel River between Chileno Canyon and Little Mermaids Canyon, vicinity of Morris Reservoir Dam.

- MIL owns frame
- MIL does not own frame

## FLIGHT LOCATION



Sources: Esri, HERE, Garmin, Intermap, increment P Corp., GEBCO, USGS, FAO, NPS, NRCAN, GeoBase, IGN, Kadaster NL, Ordnance Survey, Esri Japan, METI, Esri China (Hong Kong), swisstopo, © OpenStreetMap contributors, and the GIS User Community

