

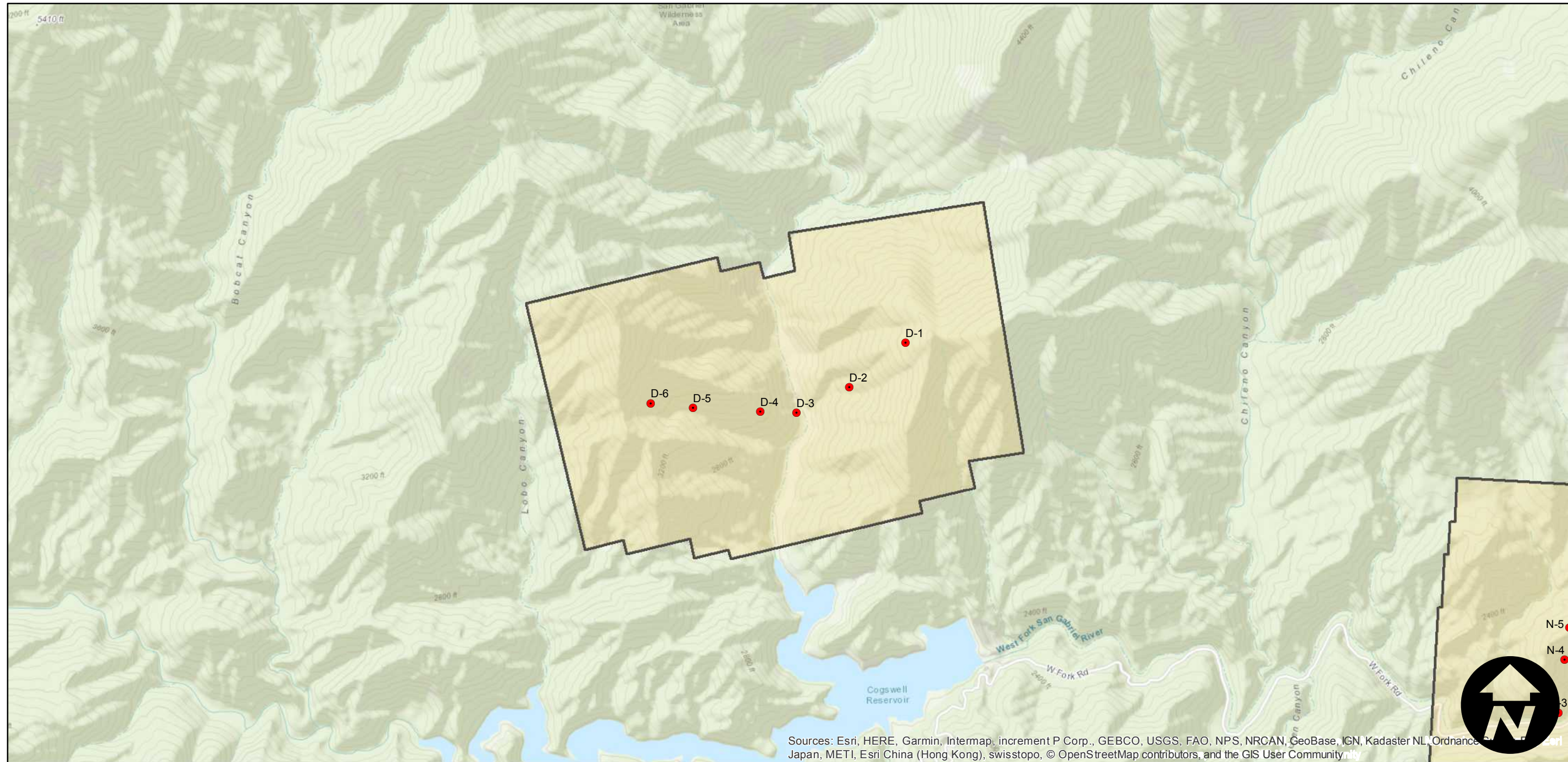
C-2396 (Devils Canyon)

Counties: Los Angeles
 Flight date(s): 10-14-1932 to 10-22-1932
 Scale: 1:5,400
 Overlap: 60-80%

Complete Metadata:
<https://www.library.ucsb.edu/src/airphotos/aerial-photography-information>

Note: Angeles National Forest; Browns Gulch, Bichota Canyon, vicinity of Devils Canyon, Venedo Canyon, West Fork of the San Gabriel River between Chileno Canyon and Little Mermaids Canyon, vicinity of Morris Reservoir Dam.

FLIGHT LOCATION



Sources: Esri, HERE, Garmin, Intermap, increment P Corp., GEBCO, USGS, FAO, NPS, NRCAN, GeoBase, IGN, Kadaster NL, Ordnance Survey, Esri Japan, METI, Esri China (Hong Kong), swisstopo, © OpenStreetMap contributors, and the GIS User Community

0 0.25 0.5 1 Miles

Index to Aerial Photography
 Page 1 of 1

Scale of this index: 1:20,000