

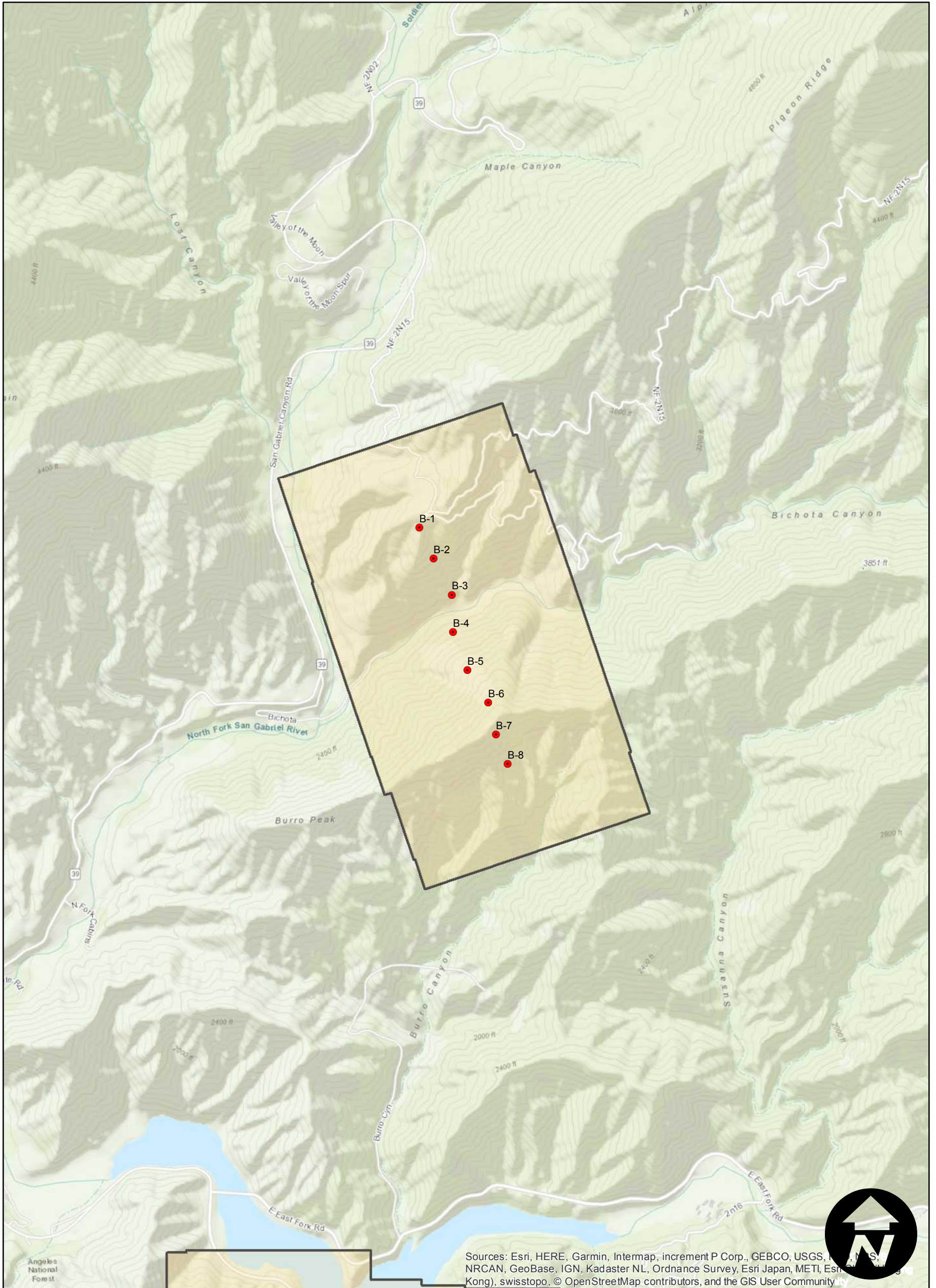
# C-2396 (Bichota Canyon)

Counties: Los Angeles  
 Flight date(s): 10-14-1932 to 10-22-1932  
 Scale: 1:5,400  
 Overlap: 60-80%

Complete Metadata:  
<https://www.library.ucsb.edu/src/airphotos/aerial-photography-information>

Note: Angeles National Forest; Browns Gulch, Bichota Canyon, vicinity of Devils Canyon, Venedo Canyon, West Fork of the San Gabriel River between Chileno Canyon and Little Mermaids Canyon, vicinity of Morris Reservoir Dam.

## FLIGHT LOCATION



Sources: Esri, HERE, Garmin, Intermap, increment P Corp., GEBCO, USGS, NRCAN, GeoBase, IGN, Kadaster NL, Ordnance Survey, Esri Japan, METI, Esri (China), Swisstopo, © OpenStreetMap contributors, and the GIS User Community



0 0.2 0.4 0.8 Miles

Scale of this index: 1:20,000