

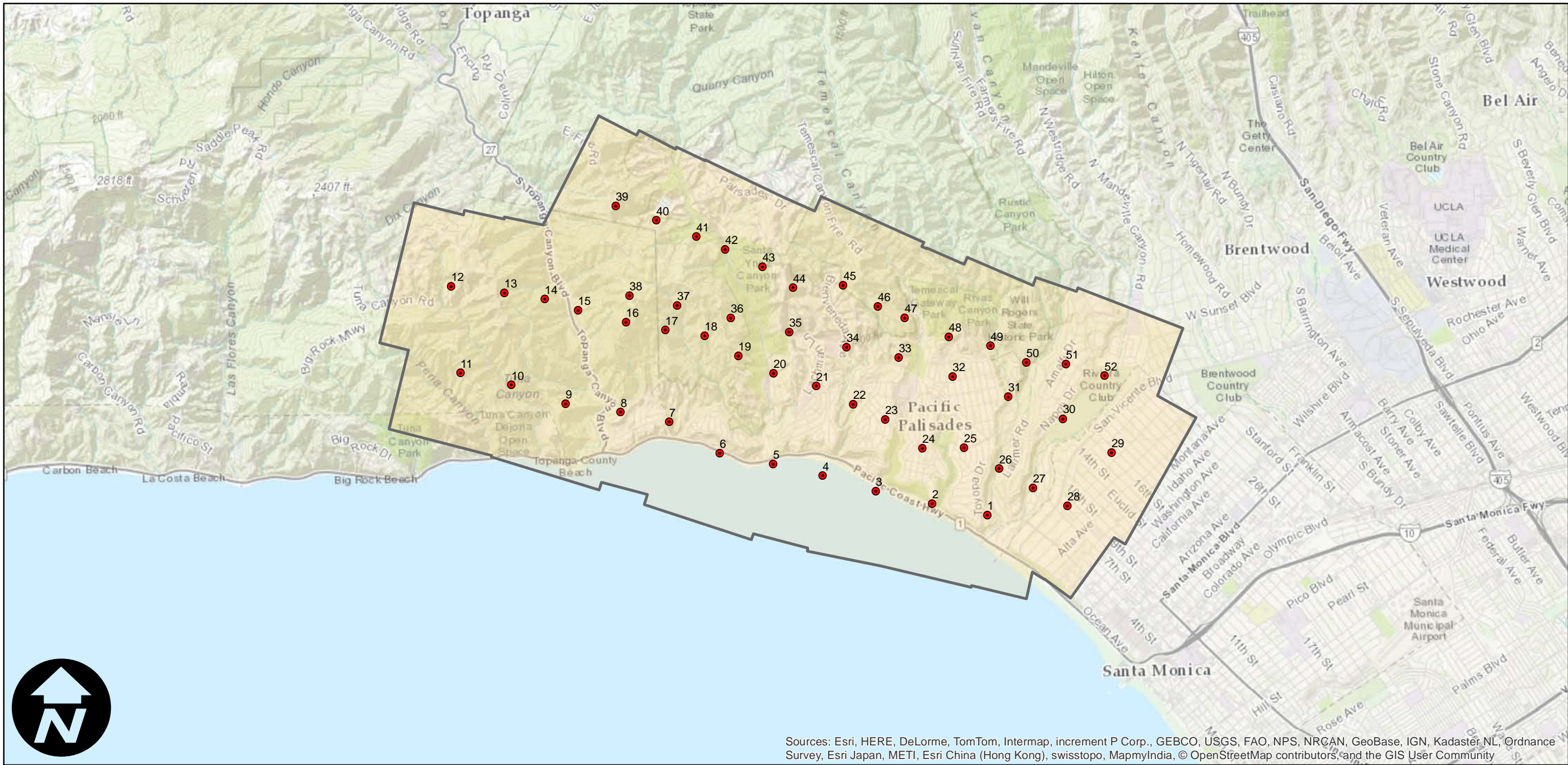
C-235X

Counties: Los Angeles
Flight date(s): 06-28-1928
Scale: 1:10,000
Overlap: 60%

Complete Metadata:
<http://www.library.ucsb.edu/mil/aerial-photography-tools>

Note: Santa Monica to vicinity of SR27/Topanga Canyon Boulevard (photograph numbers 1 through 52; photograph #20 not held in collection). Toluca Lake to Hollywood (photograph numbers A-3 through E-10). Scale of photography is approximate. Imagery acquired from Whittier College, January 2013.

- MIL owns frame
- MIL does not own frame



0 1 2 4 Miles

Index to Aerial Photography
Page 1 of 2

Scale of this index: 1:60,000

Sources: Esri, HERE, DeLorme, TomTom, Intermap, increment P Corp., GEBCO, USGS, FAO, NPS, NRCAN, GeoBase, IGN, Kadaster NL, Ordnance Survey, Esri Japan, METI, Esri China (Hong Kong), swisstopo, MapmyIndia, © OpenStreetMap contributors, and the GIS User Community

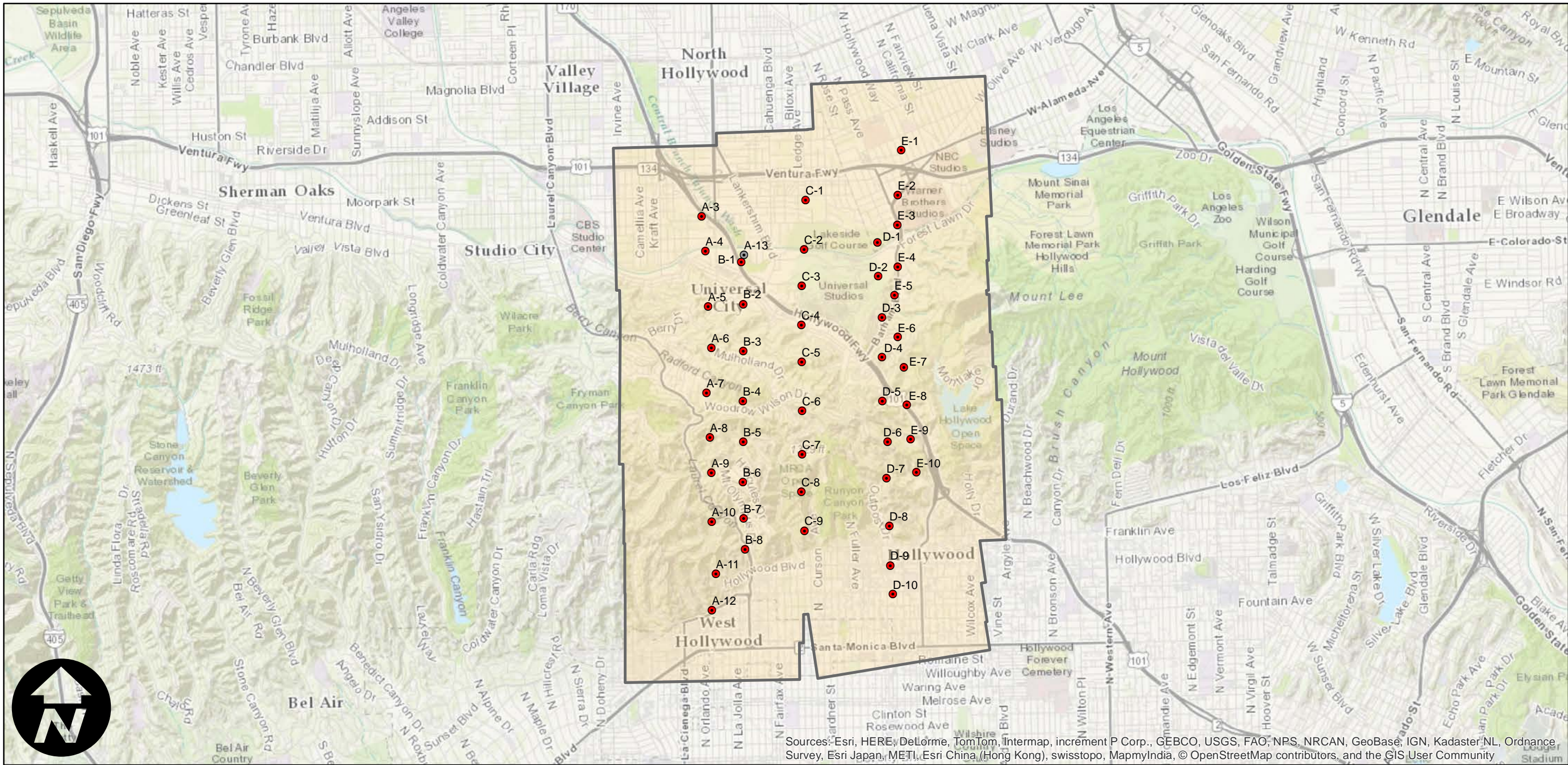
C-235X

Counties: Los Angeles
Flight date(s): 06-28-1928
Scale: 1:10,000
Overlap: 60%

Complete Metadata:
<http://www.library.ucsb.edu/mil/aerial-photography-tools>

Note: Santa Monica to vicinity of SR27/Topanga Canyon Boulevard (photograph numbers 1 through 52; photograph #20 not held in collection). Toluca Lake to Hollywood (photograph numbers A-3 through E-10). Scale of photography is approximate. Imagery acquired from Whittier College, January 2013.

- MIL owns frame
- MIL does not own frame



0 1 2 4 Miles

Index to Aerial Photography
Page 2 of 2

Scale of this index: 1:60,000