

C-201

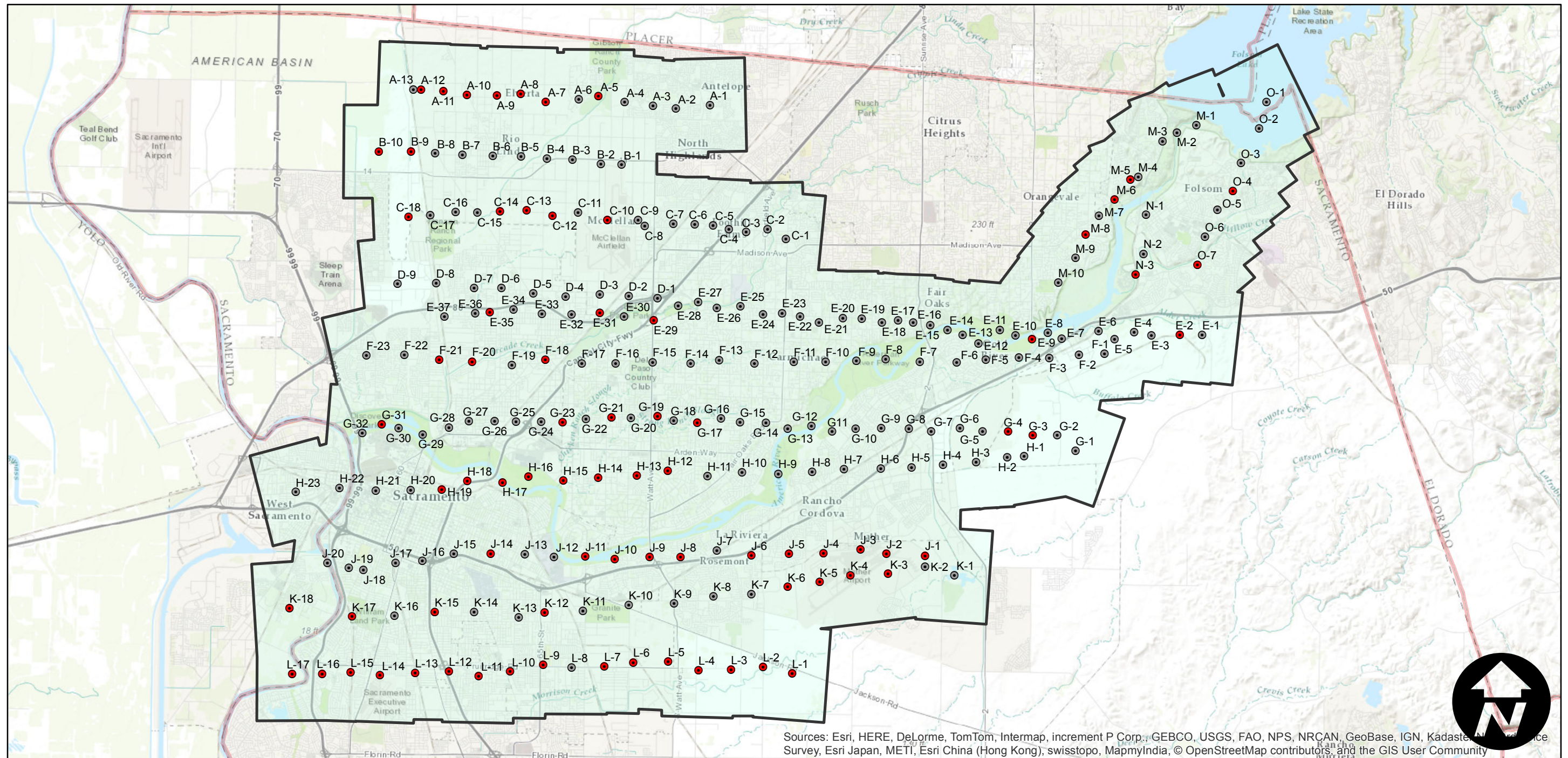
Counties: Sacramento
Flight date(s): 03-29-1928
Scale: 1:14,400
Overlap: 60%

Complete Metadata:
<http://www.library.ucsb.edu/mil/aerial-photography-tools>

Note: Sacramento River and vicinity. Copy negatives acquired from Teledyne, Inc., 1986 were reproduced from original nitrate film. Prints acquired from Whittier College, January 2013. Some original negatives were destroyed per Fairchild Aerial Surveys records.

- MIL owns frame
- MIL does not own frame

FLIGHT LOCATION



Sources: Esri, HERE, DeLorme, TomTom, Intermap, increment P Corp., GEBCO, USGS, FAO, NPS, NRCAN, GeoBase, IGN, Kadaster, N, and France Survey, Esri Japan, METI, Esri China (Hong Kong), swisstopo, MapmyIndia, © OpenStreetMap contributors, and the GIS User Community

