

C-1940D

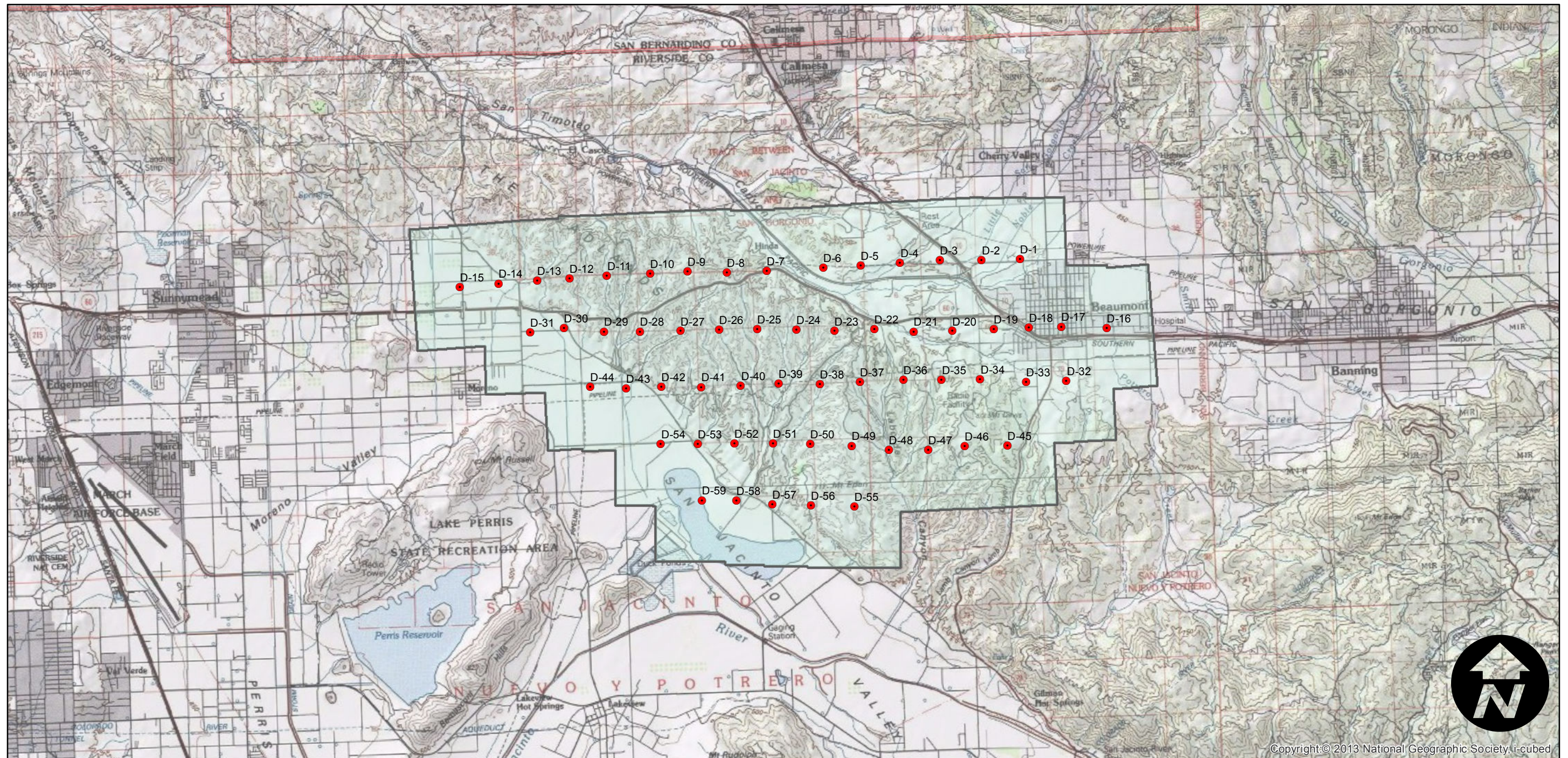
Counties: Riverside
Flight date(s): 02-22-1932 to 02-23-1932
Scale: 1:14,400
Overlap: 60%

Note: Area between Beaumont and Perris Reservoir.
Acquired from Whittier College, January 2013.

FLIGHT LOCATION



Complete Metadata:
<http://www.library.ucsb.edu/mil/aerial-photography-tools>



0 2 4 8 Miles