

# C-1940B

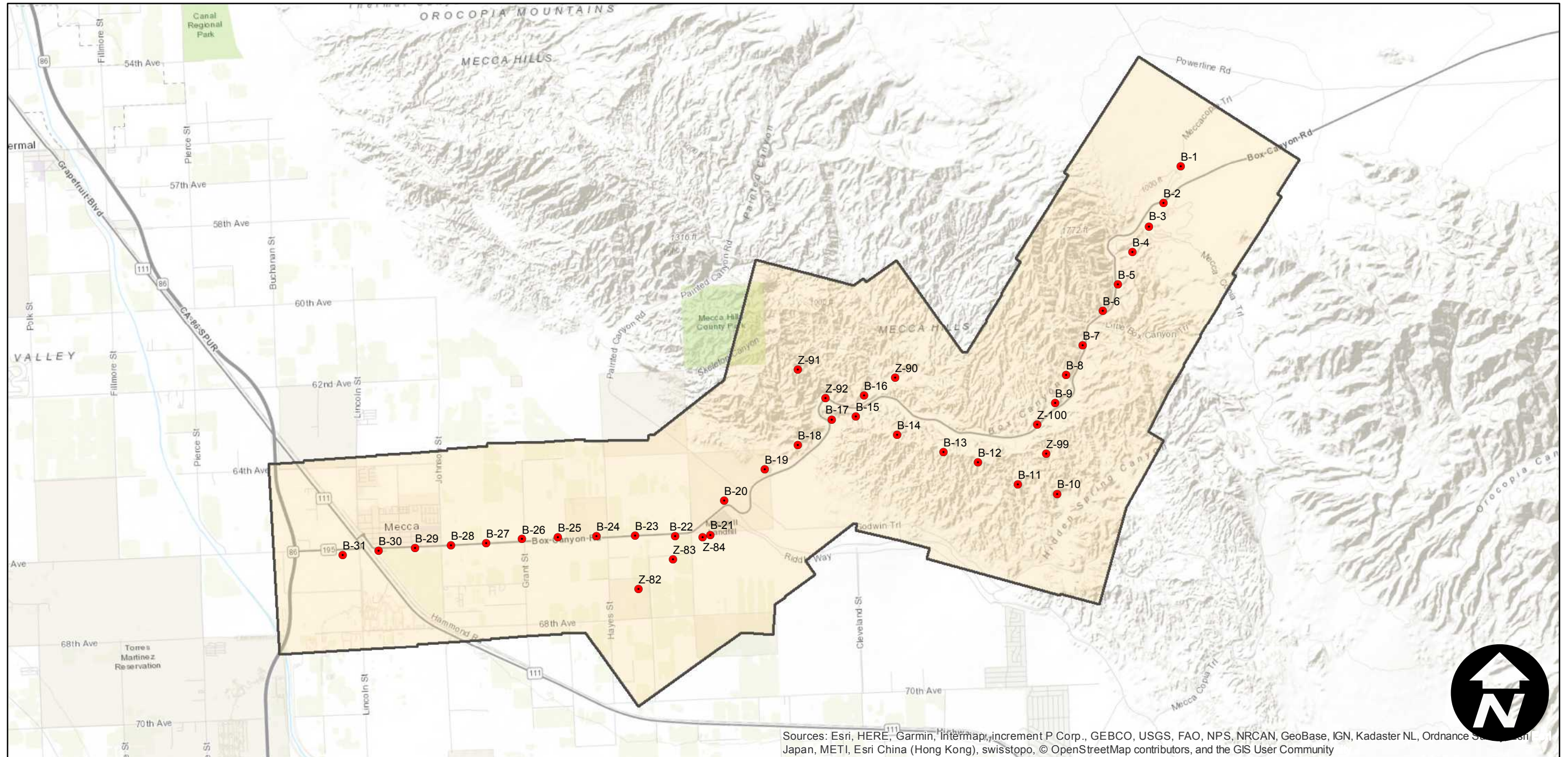
Counties: Riverside  
Flight date(s): 02-22-1932 to 02-23-1932  
Scale: 1:14,400  
Overlap: 60%

Note: Shavers Well to Mecca. Acquired from Whittier College, January 2013. Nitrate negatives scanned, April 2015.

## FLIGHT LOCATION



Complete Metadata:  
<https://www.library.ucsb.edu/src/airphotos/aerial-photography-information>



Sources: Esri, HERE, Garmin, Intermap, increment P Corp., GEBCO, USGS, FAO, NPS, NRCAN, GeoBase, IGN, Kadaster NL, Ordnance Survey, Esri Japan, METI, Esri China (Hong Kong), swisstopo, © OpenStreetMap contributors, and the GIS User Community

