

C-1930

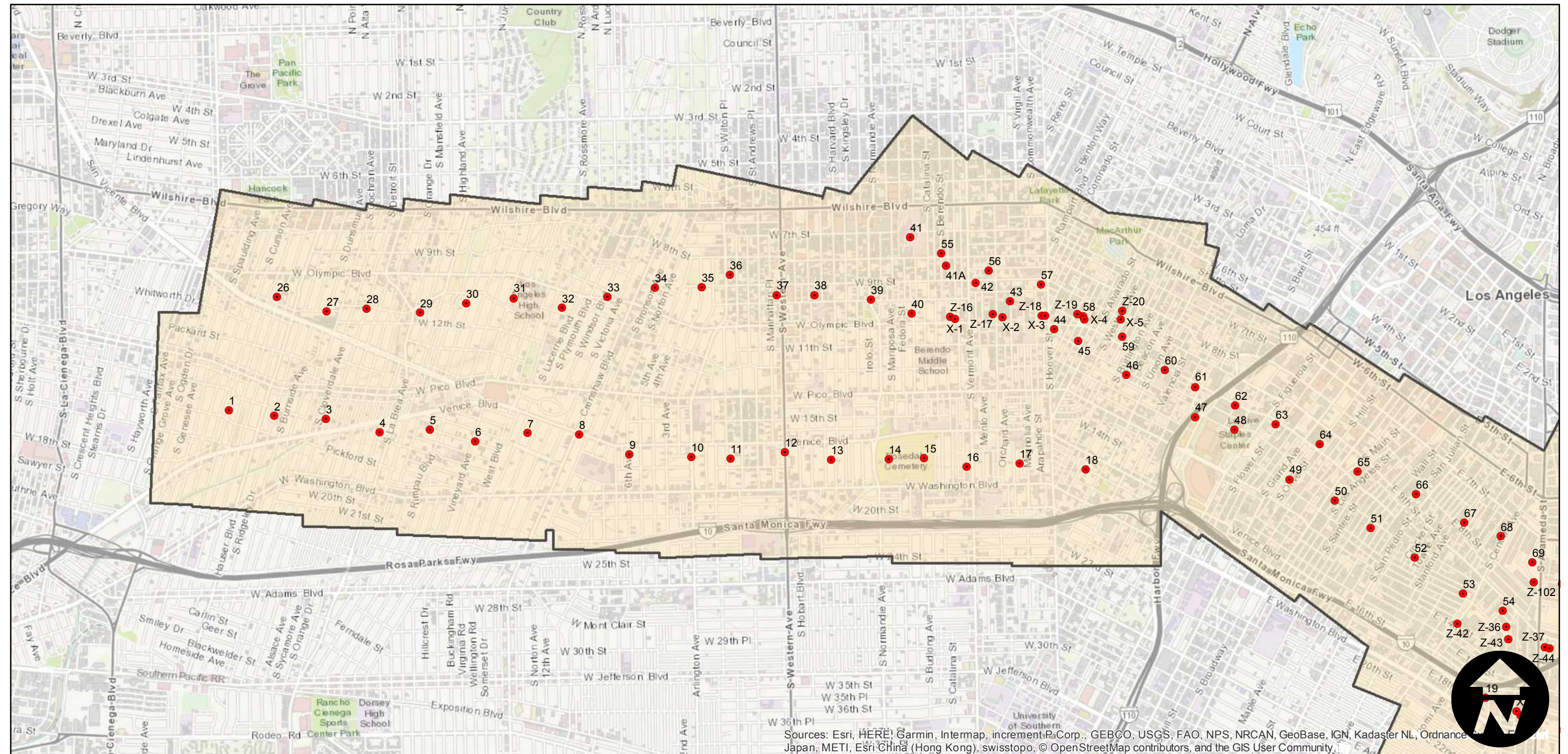
Counties: Los Angeles
Flight date(s): 12-16-1931
Scale: 1:7,200
Overlap: 60-95%

Note: Los Angeles: Santa Ana Freeway (SR60) and Interstate 10 from Interstate 710 to La Brea Avenue. Acquired from Whittier College, January 2013. Nitrate negatives scanned, April 2015.

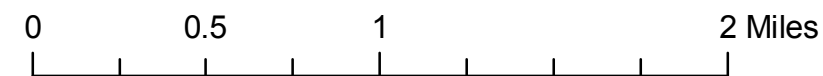
FLIGHT LOCATION



Complete Metadata:
<https://www.library.ucsb.edu/src/airphotos/aerial-photography-information>



Sources: Esri, HERE, Garmin, Intermap, increment P Corp., GEBCO, USGS, FAO, NPS, NRCAN, GeoBase, IGN, Kadaster NL, Ordnance Survey, Esri Japan, METI, Esri China (Hong Kong), swisstopo, © OpenStreetMap contributors, and the GIS User Community



C-1930

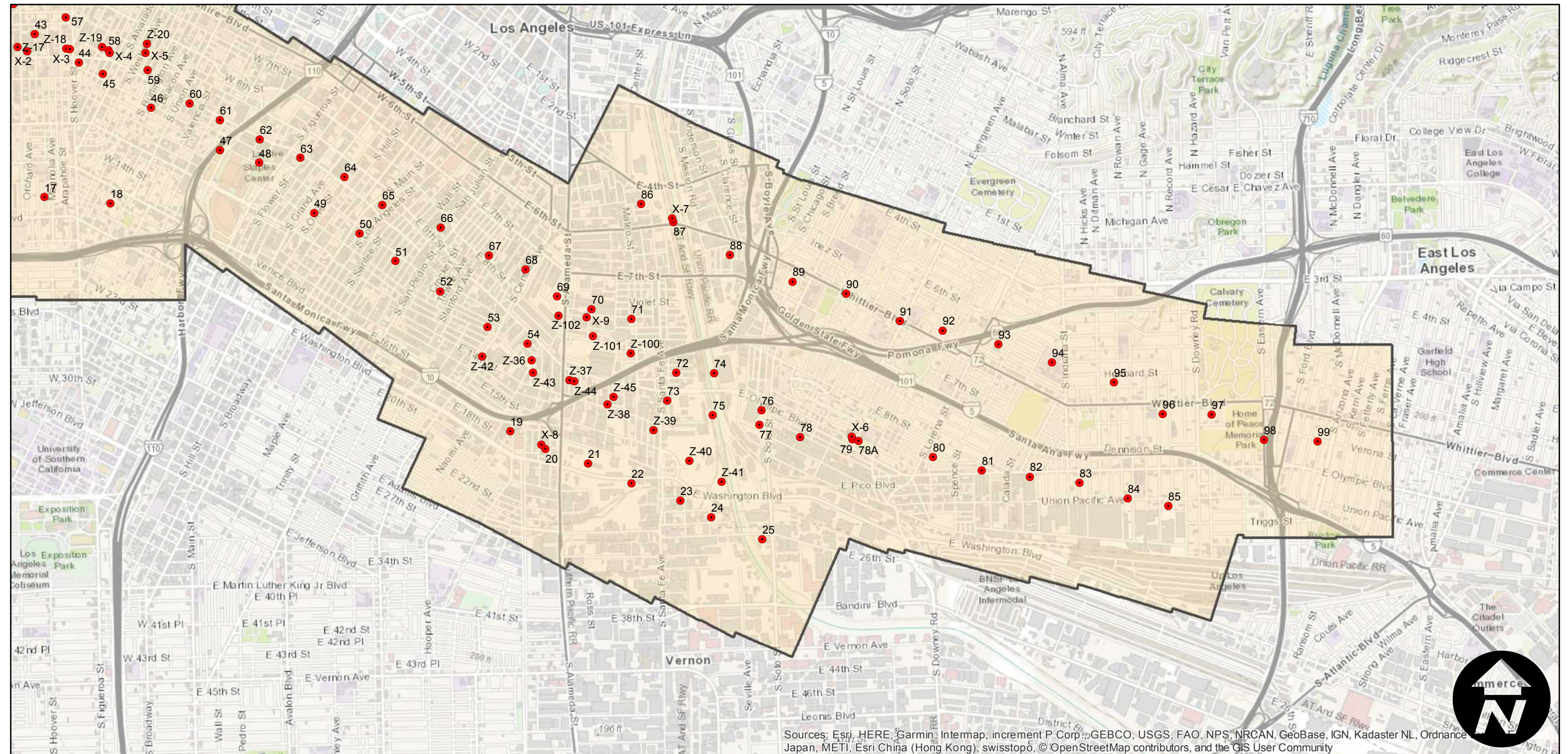
Counties: Los Angeles
Flight date(s): 12-16-1931
Scale: 1:7,200
Overlap: 60-95%

Note: Los Angeles: Santa Ana Freeway (SR60) and Interstate 10 from Interstate 710 to La Brea Avenue. Acquired from Whittier College, January 2013. Nitrate negatives scanned, April 2015.

FLIGHT LOCATION



Complete Metadata:
<https://www.library.ucsb.edu/src/airphotos/aerial-photography-information>



Sources: Esri, HERE, Garmin, Intermap, increment P Corp., GEBCO, USGS, FAO, NPS, NRCAN, GeoBase, IGN, Kadaster NL, Ordnance Japan, METI, Esri China (Hong Kong), swisstopo, © OpenStreetMap contributors, and the GIS User Community

0 0.5 1 2 Miles

Scale of this index: 1:35,000