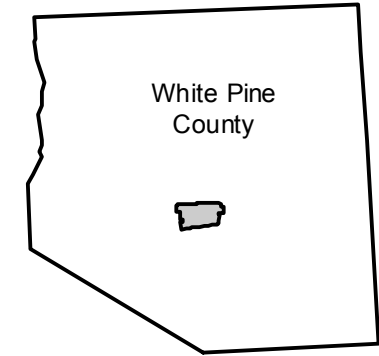


C-1760

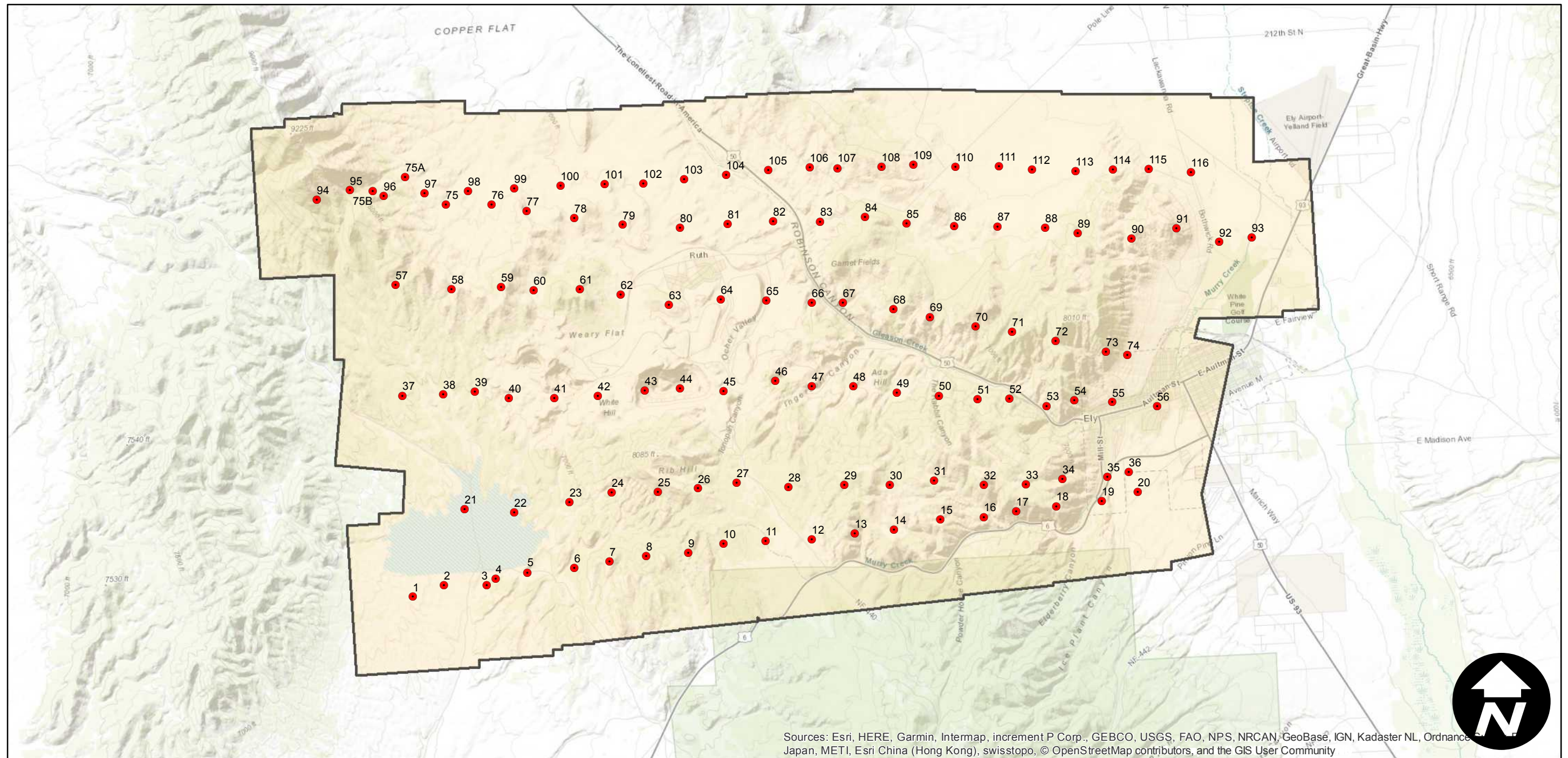
Counties: White Pine (Nevada)
Flight date(s): 09-24-1931 to 10-01-1931
Scale: 1:12,000
Overlap: 60-80%

Note: Ely area, vicinity of Kimberly. Imagery acquired from Whittier College, January 2013. Nitrate negatives scanned, March 2015.

FLIGHT LOCATION



Complete Metadata:
<https://www.library.ucsb.edu/src/airphotos/aerial-photography-information>



Sources: Esri, HERE, Garmin, Intermap, increment P Corp., GEBCO, USGS, FAO, NPS, NRCAN, GeoBase, IGN, Kadaster NL, Ordnance Survey, Esri Japan, METI, Esri China (Hong Kong), swisstopo, © OpenStreetMap contributors, and the GIS User Community

0 1.5 3 6 Miles

Index to Aerial Photography
Page 1 of 1

Scale of this index: 1:85,000

