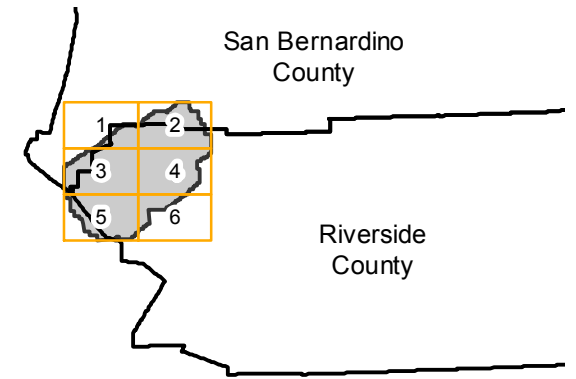


# C-1740

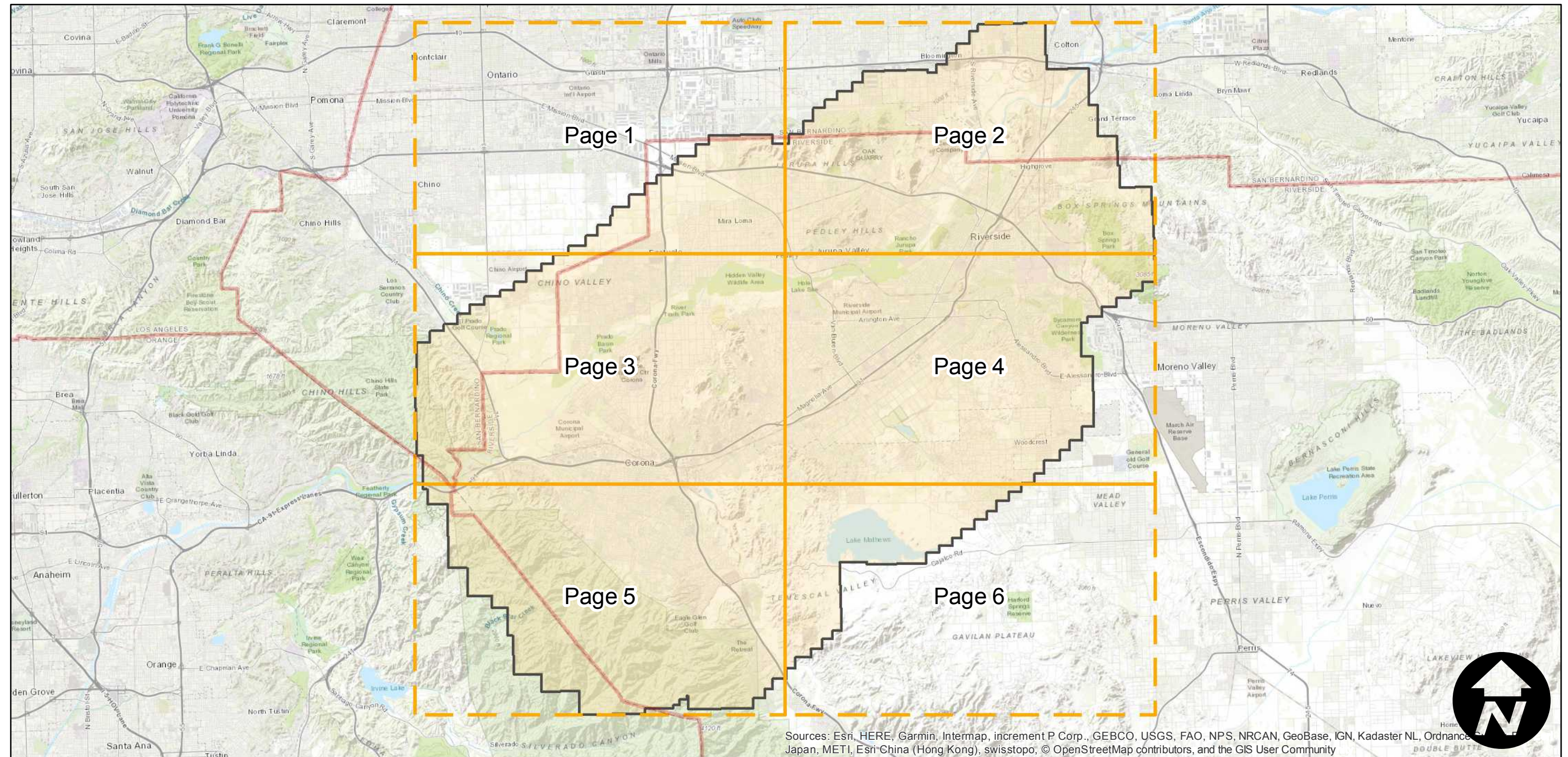
Counties: Riverside, San Bernardino  
Flight date(s): 09-18-1931 to 09-27-1931  
Scale: 1:12,000  
Overlap: 60-80%

Note: Coverage of Riverside, El Cerrito, Corona, Norco, Mira Loma, and more. Exact flight date is unknown. Imagery acquired from Whittier College, January 2013.

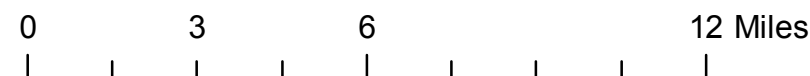
## FLIGHT LOCATION



Complete Metadata:  
<https://www.library.ucsb.edu/src/airphotos/aerial-photography-information>



Sources: Esri, HERE, Garmin, Intermap, increment P Corp., GEBCO, USGS, FAO, NPS, NRCAN, GeoBase, IGN, Kadaster NL, Ordnance Survey, Esri Japan, METI, Esri China (Hong Kong), swisstopo, © OpenStreetMap contributors, and the GIS User Community



Index to Aerial Photography  
Page Key

Scale of this index: 1:215,000



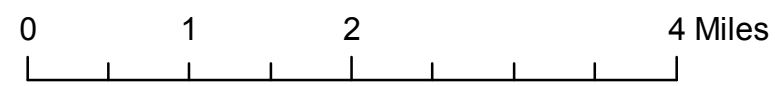
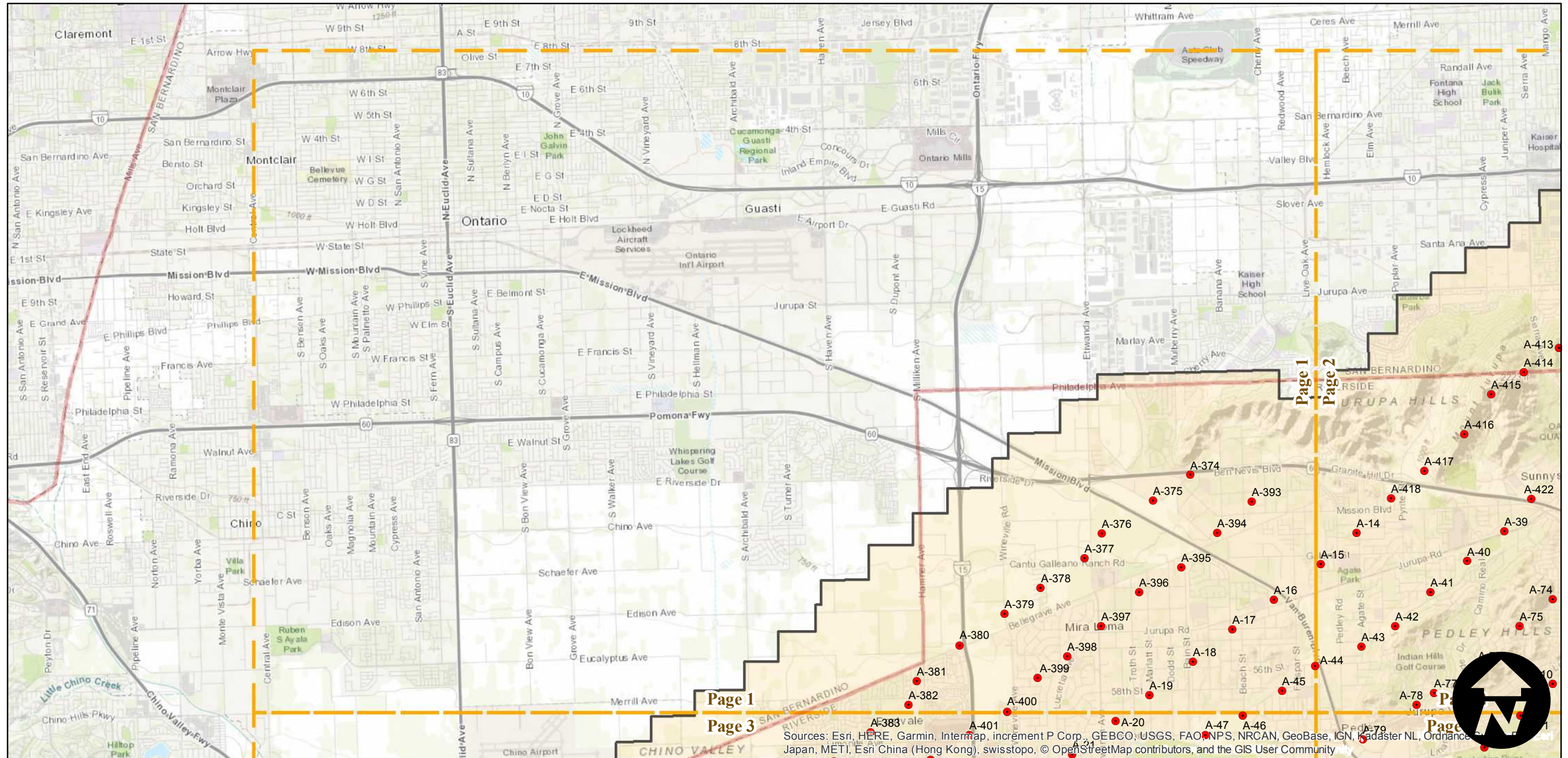
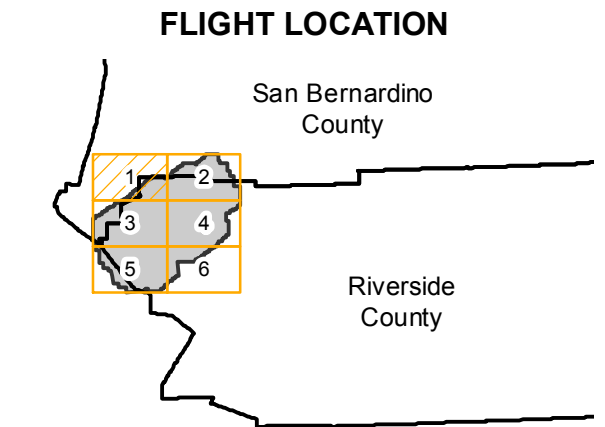
# C-1740

Counties: Riverside, San Bernardino  
Flight date(s): 09-18-1931 to 09-27-1931  
Scale: 1:12,000  
Overlap: 60-80%

Complete Metadata:  
<https://www.library.ucsb.edu/src/airphotos/aerial-photography-information>

Note: Coverage of Riverside, El Cerrito, Corona, Norco, Mira Loma, and more. Exact flight date is unknown. Imagery acquired from Whittier College, January 2013.

- MIL owns frame
- MIL does not own frame



Sources: Esri, HERE, Garmin, Intermap, increment P Corp., GEBCO, USGS, FAO, NPS, NRCAN, GeoBase, IGN, Kadaster NL, Ordnance Survey, Esri Japan, METI, Esri China (Hong Kong), swisstopo, © OpenStreetMap contributors, and the GIS User Community



# C-1740

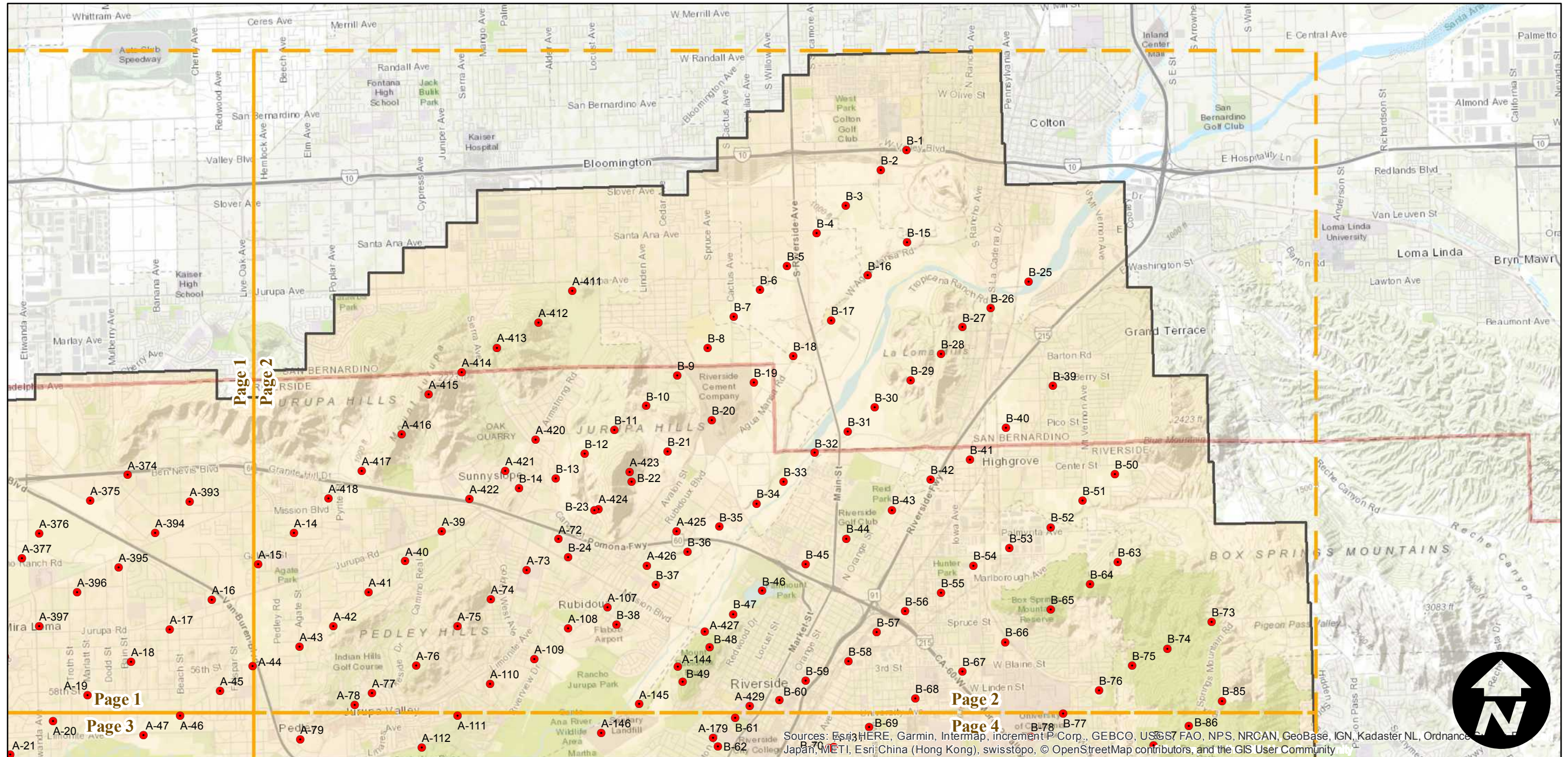
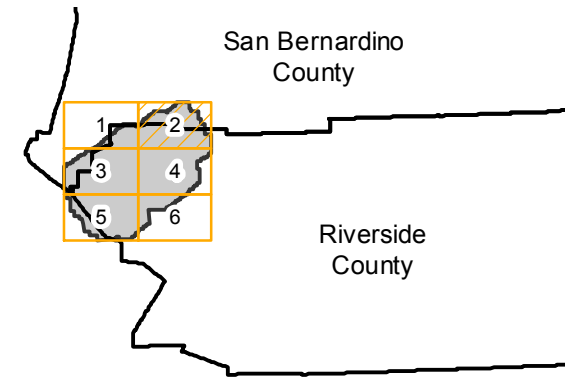
Counties: Riverside, San Bernardino  
Flight date(s): 09-18-1931 to 09-27-1931  
Scale: 1:12,000  
Overlap: 60-80%

Complete Metadata:  
<https://www.library.ucsb.edu/src/airphotos/aerial-photography-information>

Note: Coverage of Riverside, El Cerrito, Corona, Norco, Mira Loma, and more. Exact flight date is unknown. Imagery acquired from Whittier College, January 2013.

- MIL owns frame
- MIL does not own frame

## FLIGHT LOCATION



0 1 2 4 Miles

Index to Aerial Photography  
Page 2 of 6

Scale of this index: 1:75,000

Sources: Esri, HERE, Garmin, Intermap, increment P Corp., GEBCO, USGS, FAO, NPS, NRCAN, GeoBase, IGN, Kadaster NL, Ordnance Survey, Esri, Swisstopo, Swisstopo, © OpenStreetMap contributors, and the GIS User Community



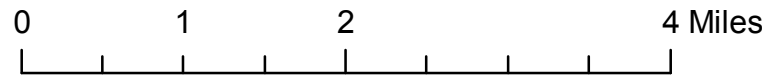
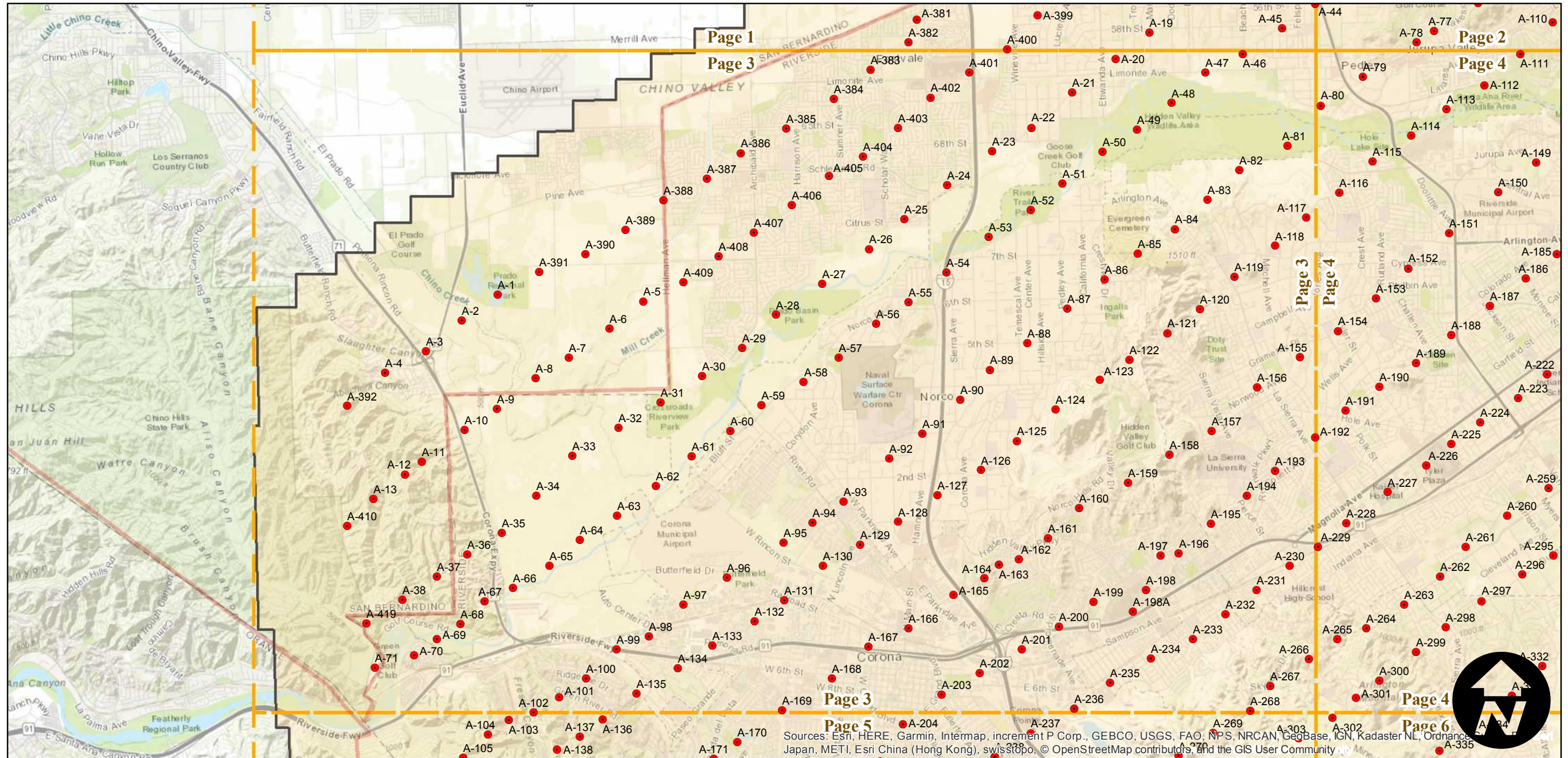
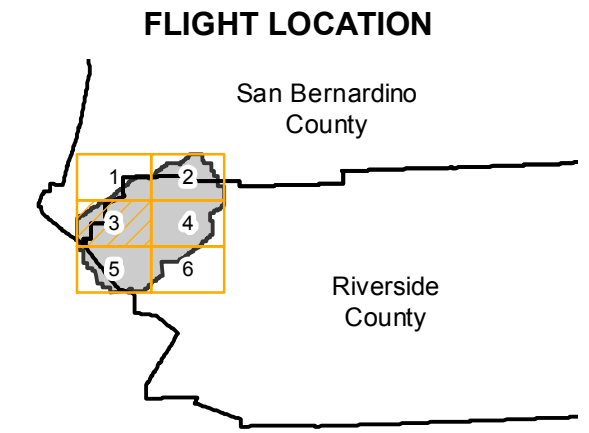
# C-1740

Counties: Riverside, San Bernardino  
Flight date(s): 09-18-1931 to 09-27-1931  
Scale: 1:12,000  
Overlap: 60-80%

Complete Metadata:  
<https://www.library.ucsb.edu/src/airphotos/aerial-photography-information>

Note: Coverage of Riverside, El Cerrito, Corona, Norco, Mira Loma, and more. Exact flight date is unknown. Imagery acquired from Whittier College, January 2013.

- MIL owns frame
- MIL does not own frame



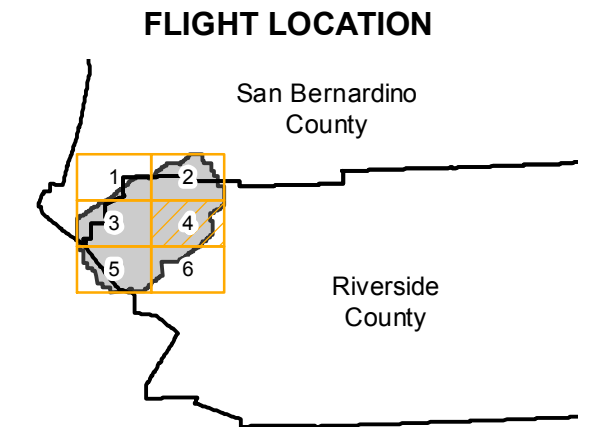
Sources: Esri, HERE, Garmin, Intermap, increment P Corp., GEBCO, USGS, FAO, NPS, NRCAN, GeoBase, IGN, Kadaster NL, Ordnance Survey, Esri Japan, METI, Esri China (Hong Kong), Swisstopo, © OpenStreetMap contributors, and the GIS User Community



# C-1740

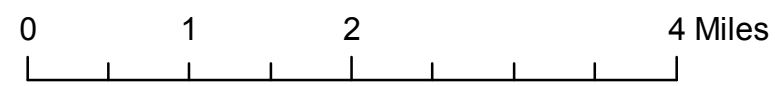
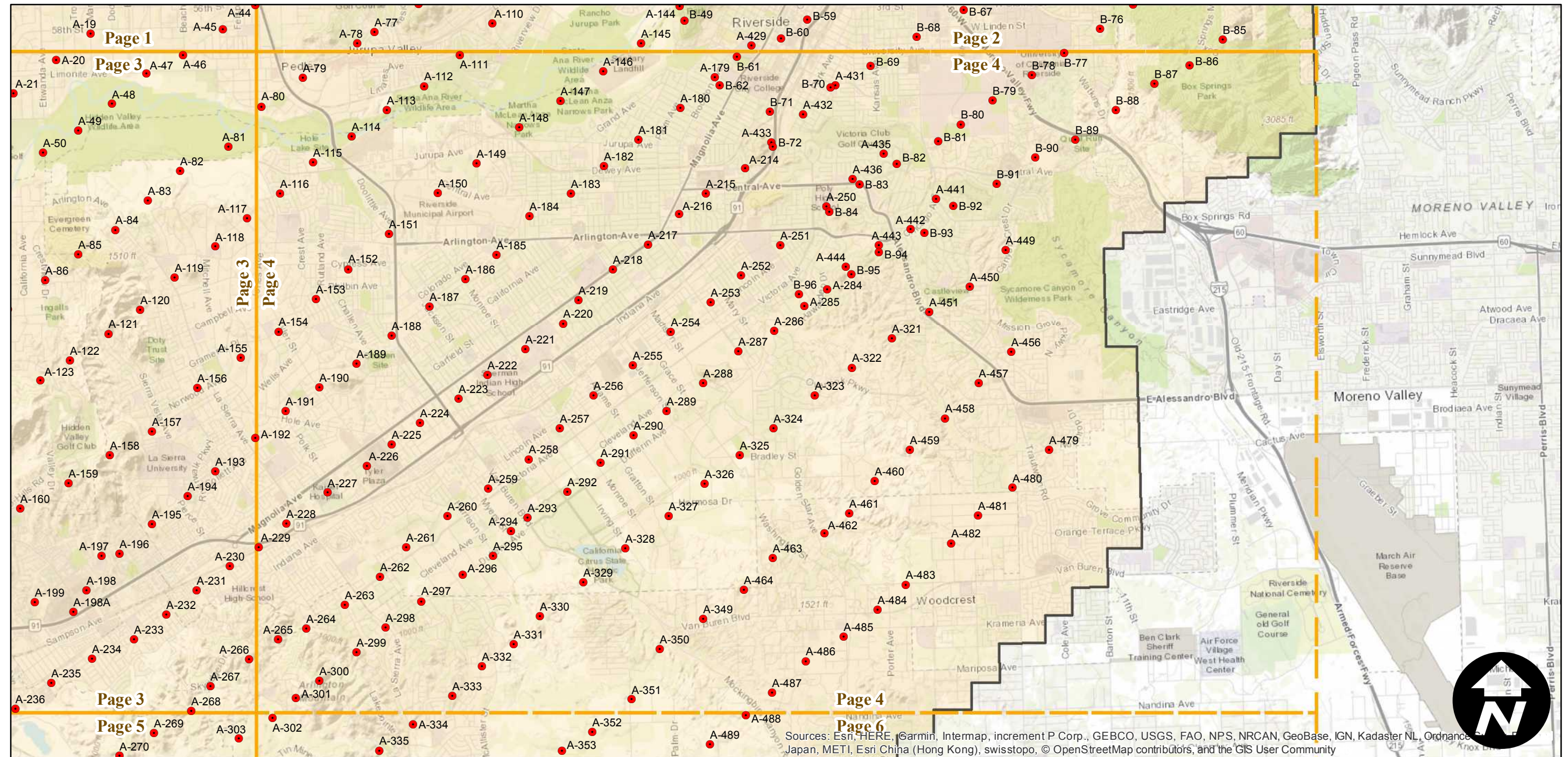
Counties: Riverside, San Bernardino  
Flight date(s): 09-18-1931 to 09-27-1931  
Scale: 1:12,000  
Overlap: 60-80%

Note: Coverage of Riverside, El Cerrito, Corona, Norco, Mira Loma, and more. Exact flight date is unknown. Imagery acquired from Whittier College, January 2013.



Complete Metadata:  
<https://www.library.ucsb.edu/src/airphotos/aerial-photography-information>

- MIL owns frame
- MIL does not own frame



Sources: Esri, HERE, Garmin, Intermap, increment P Corp., GEBCO, USGS, FAO, NPS, NRCAN, GeoBase, IGN, Kadaster NL, Ordnance Survey, Esri Japan, METI, Esri China (Hong Kong), swisstopo, © OpenStreetMap contributors, and the GIS User Community



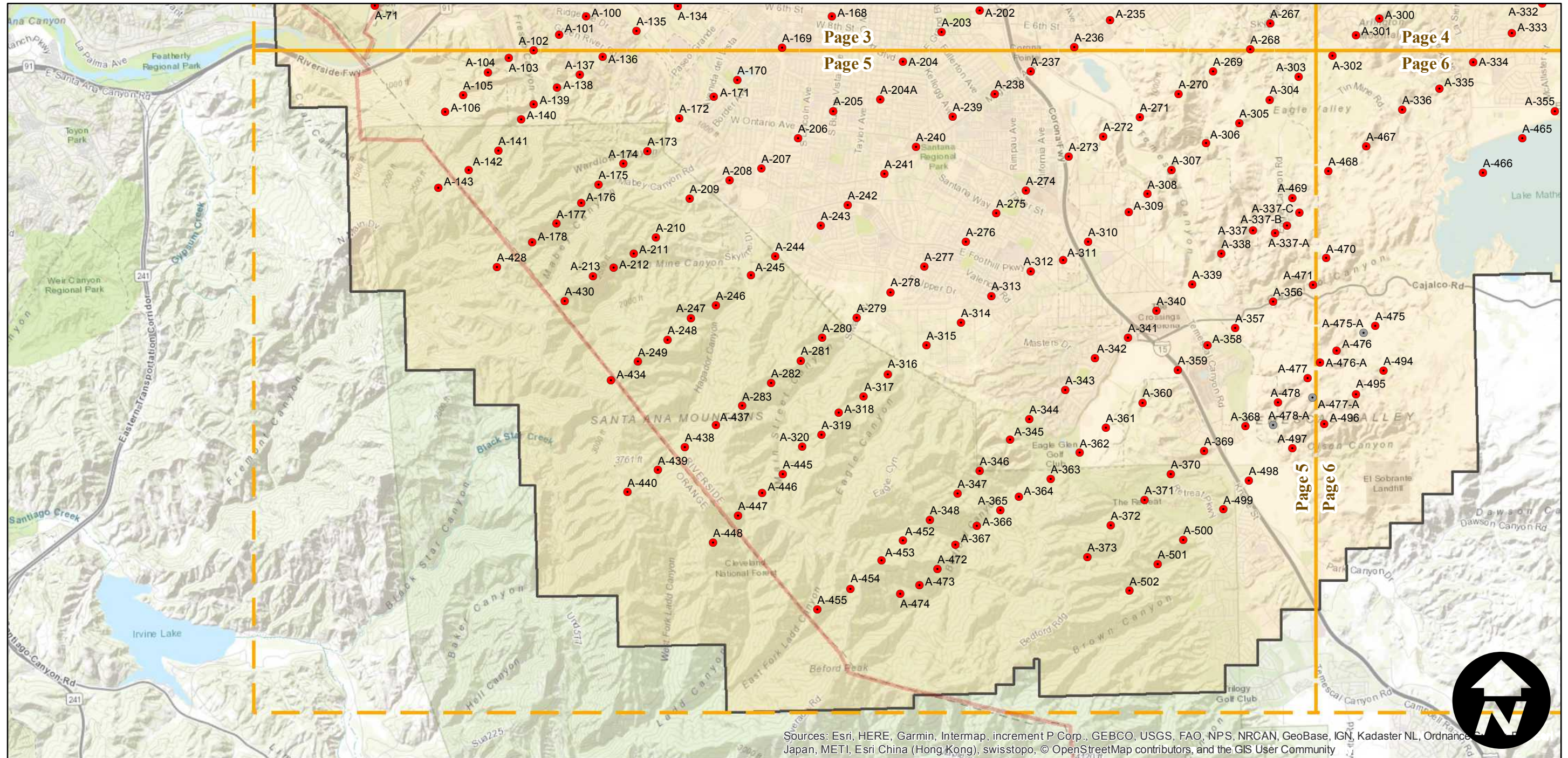
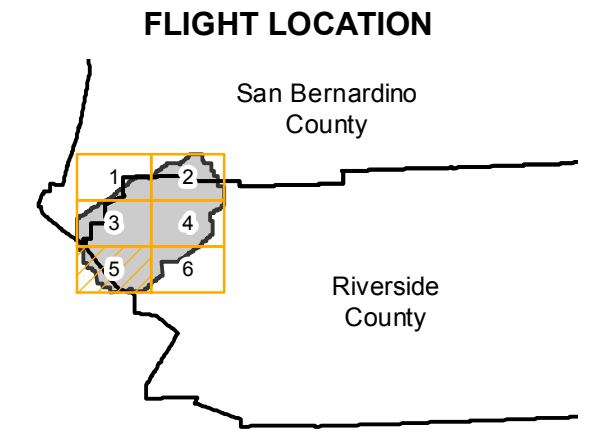
# C-1740

Counties: Riverside, San Bernardino  
Flight date(s): 09-18-1931 to 09-27-1931  
Scale: 1:12,000  
Overlap: 60-80%

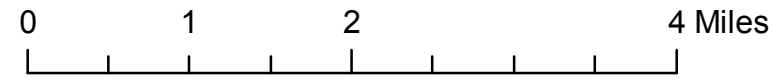
Complete Metadata:  
<https://www.library.ucsb.edu/src/airphotos/aerial-photography-information>

Note: Coverage of Riverside, El Cerrito, Corona, Norco, Mira Loma, and more. Exact flight date is unknown. Imagery acquired from Whittier College, January 2013.

- MIL owns frame
- MIL does not own frame



Sources: Esri, HERE, Garmin, Intermap, increment P Corp., GEBCO, USGS, FAO, NPS, NRCAN, GeoBase, IGN, Kadaster NL, Ordnance Survey, Esri Japan, METI, Esri China (Hong Kong), swisstopo, © OpenStreetMap contributors, and the GIS User Community





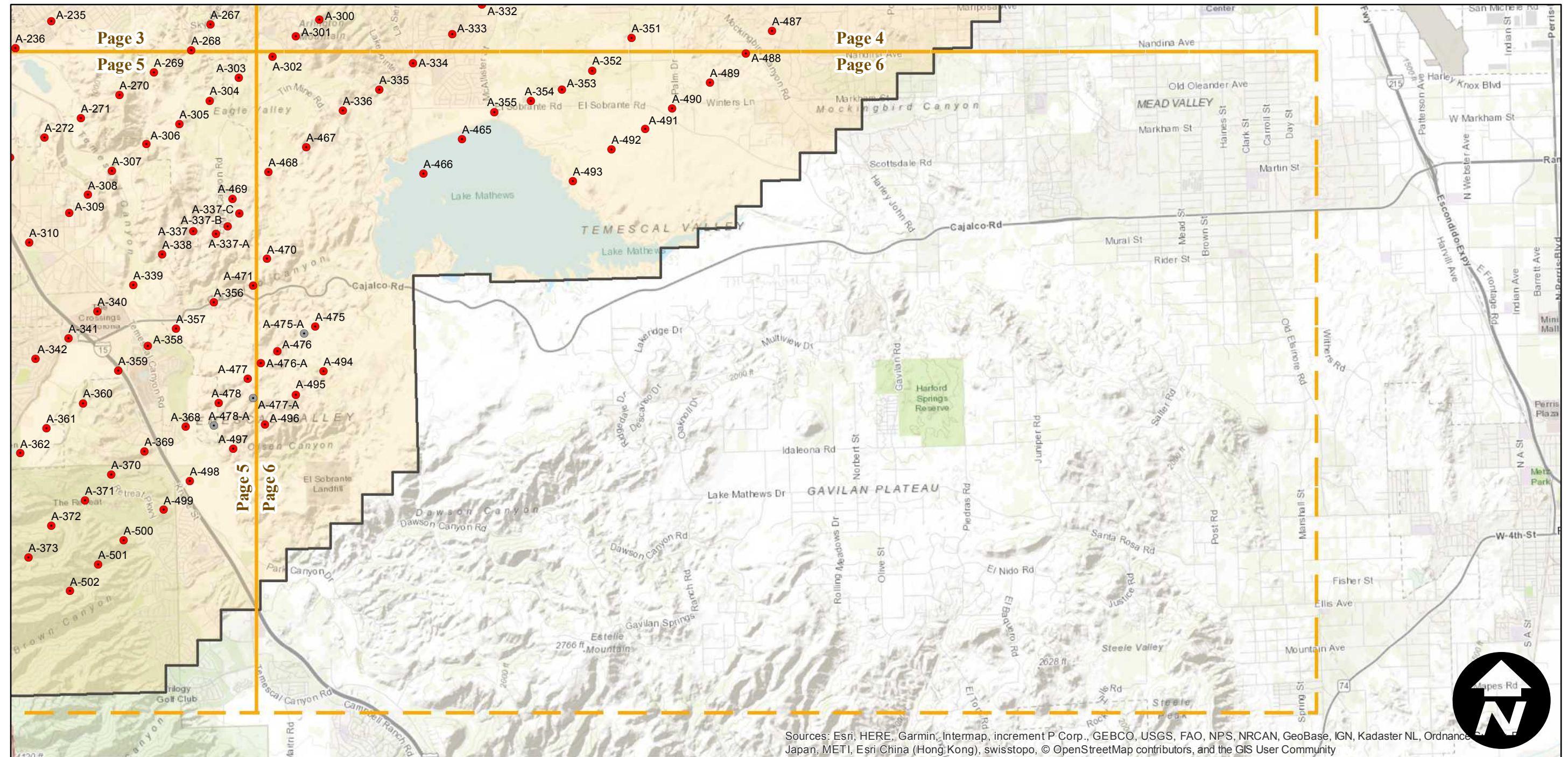
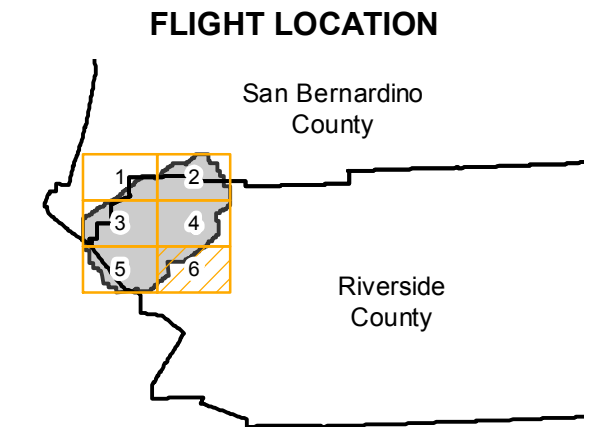
# C-1740

Counties: Riverside, San Bernardino  
Flight date(s): 09-18-1931 to 09-27-1931  
Scale: 1:12,000  
Overlap: 60-80%

Complete Metadata:  
<https://www.library.ucsb.edu/src/airphotos/aerial-photography-information>

Note: Coverage of Riverside, El Cerrito, Corona, Norco, Mira Loma, and more. Exact flight date is unknown. Imagery acquired from Whittier College, January 2013.

- MIL owns frame
- MIL does not own frame



Sources: Esri, HERE, Garmin, Intermap, increment P Corp., GEBCO, USGS, FAO, NPS, NRCAN, GeoBase, IGN, Kadaster NL, Ordnance Survey, Esri Japan, METI, Esri China (Hong Kong), swisstopo, © OpenStreetMap contributors, and the GIS User Community

