

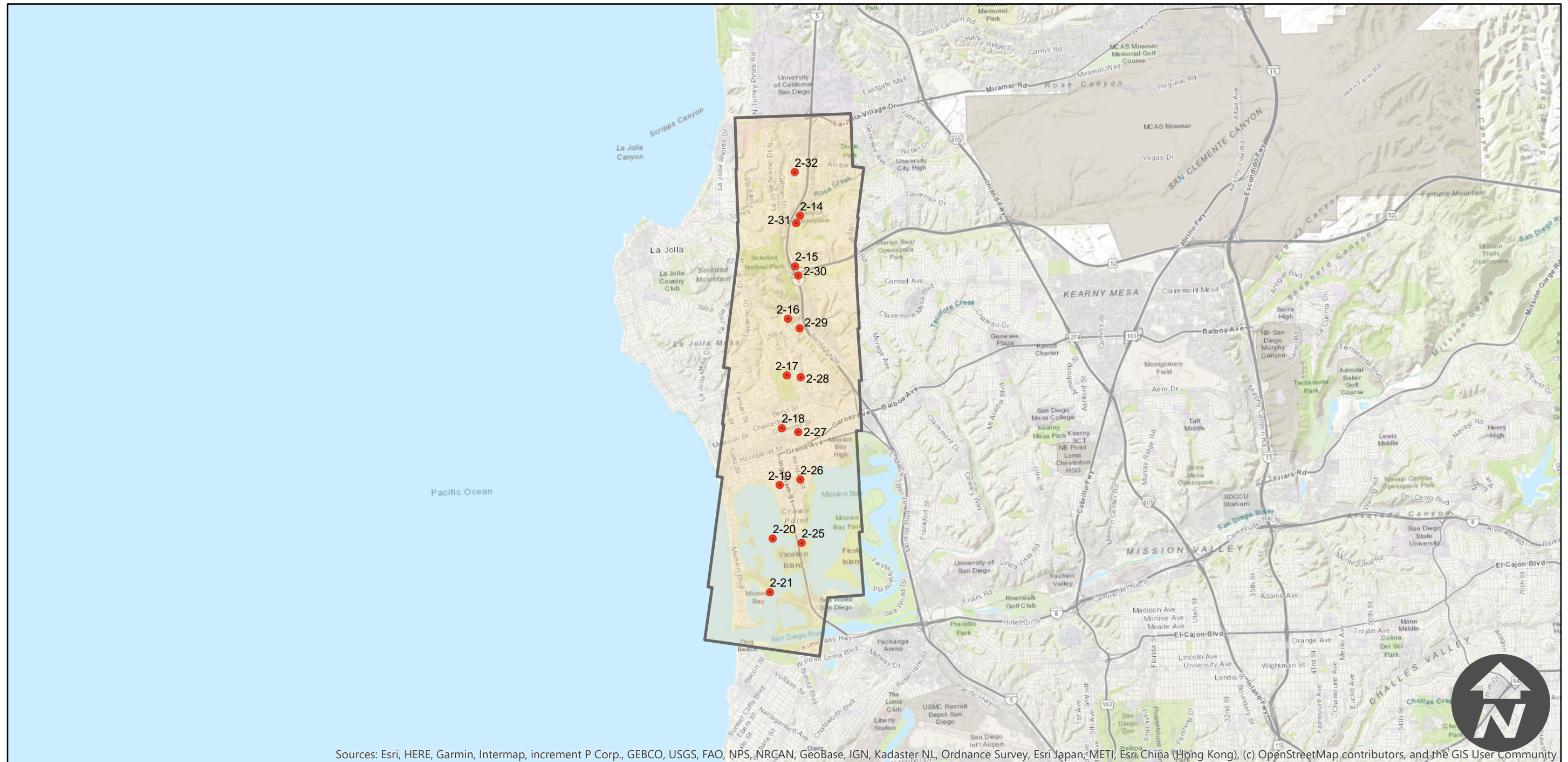
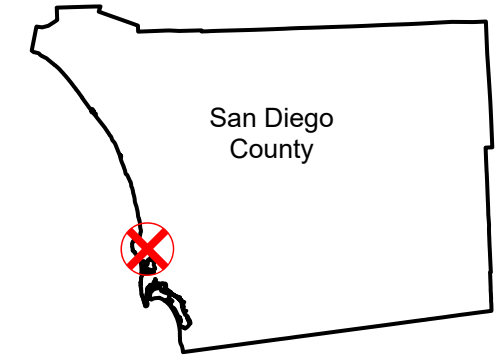
C-17200 (1:14.4K)

Counties: San Diego
Flight date(s): 12-20-1951 to 03-22-1952
Scale: 1:14,400
Overlap: 60%

Complete Metadata:
<https://www.library.ucsb.edu/src/airphotos/aerial-photography-information>

Note: Imagery of Ocean Beach to UCSD and following Interstate 8 through Mission Valley in San Diego. Coverage also includes Sea World in the Mission Bay Park area ten years prior to its construction.

FLIGHT LOCATION



Sources: Esri, HERE, Garmin, Intermap, increment P Corp., GEBCO, USGS, FAO, NPS, NRCAN, GeoBase, IGN, Kadaster NL, Ordnance Survey, Esri Japan, METI, Esri China (Hong Kong), (c) OpenStreetMap contributors, and the GIS User Community

0 1.5 3 6 Miles