

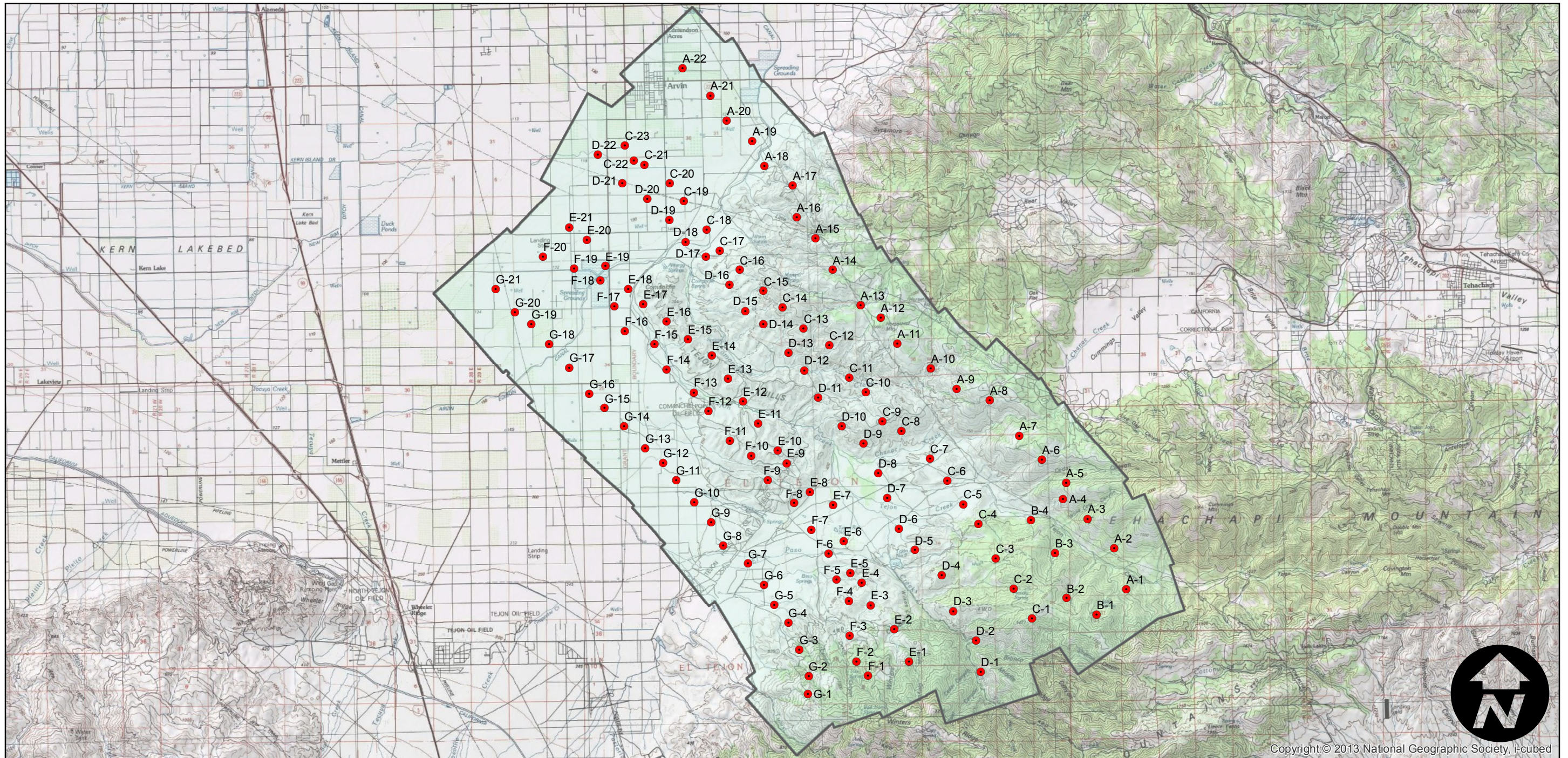
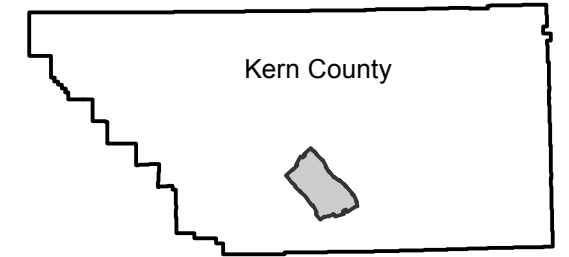
C-171

Counties: Kern
Flight date(s): 02-01-1928 to 02-28-1928
Scale: 1:18,000
Overlap: 60%

Complete Metadata:
<http://www.library.ucsb.edu/mil/aerial-photography-tools>

Note: Area between Arvin and Stallion Springs. Imagery acquired from Whittier College, January 2013. Some negatives were destroyed per Fairchild Aerial Surveys records.

FLIGHT LOCATION



0 3 6 12 Miles

Index to Aerial Photography
Page 1 of 1

Scale of this index: 1:175,000

Copyright © 2013 National Geographic Society, i-cubed