

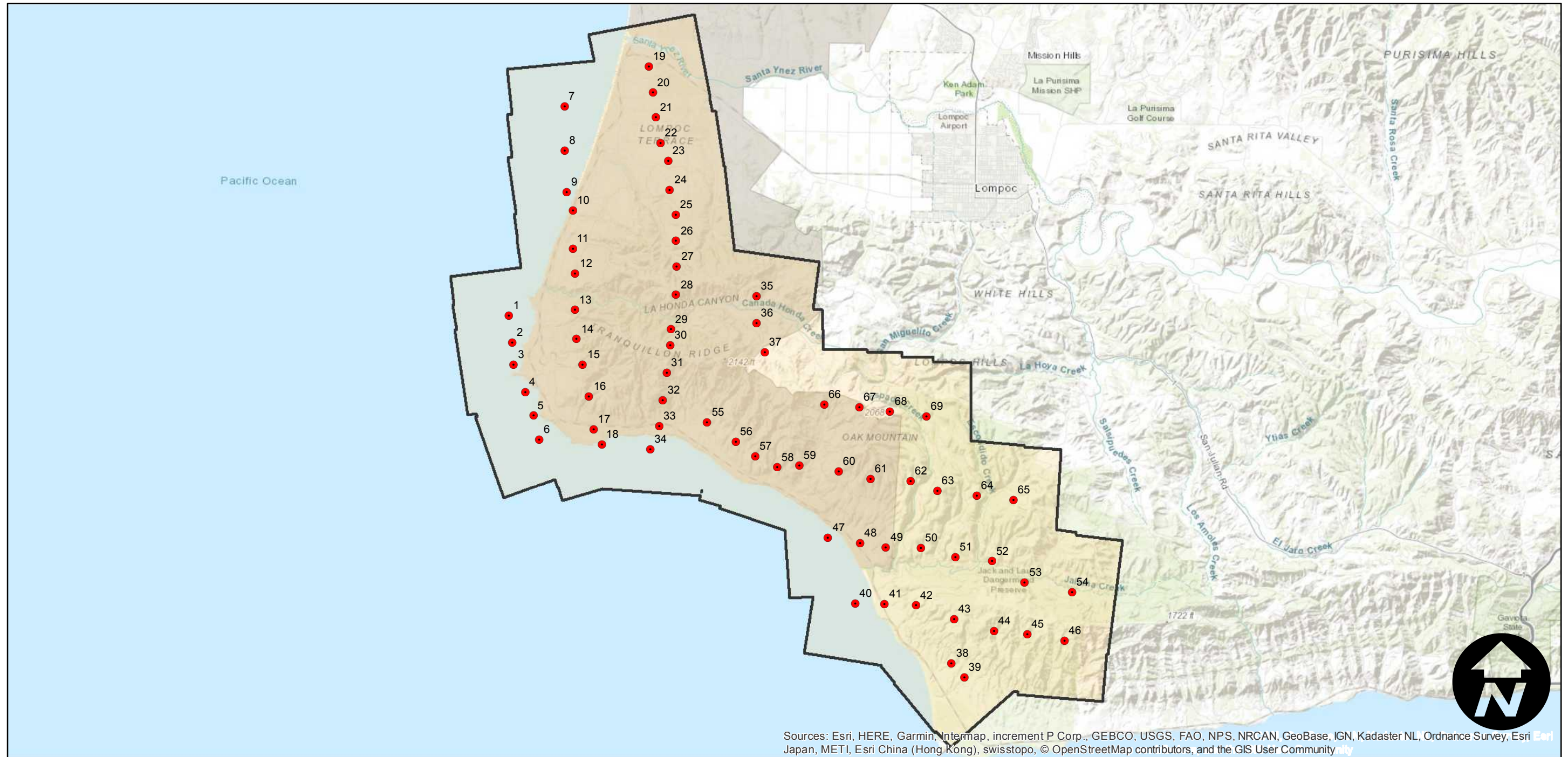
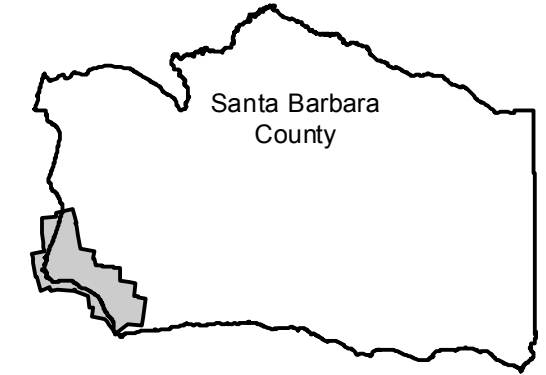
C-1655

Counties: Santa Barbara
Flight date(s): 09-01-1928 to 05-02-1929
Scale: 1:18,000
Overlap: 50-80%

Note: Coastline near Tranquillon Mountain (south of Lompoc).
Flight was derived from photography taken for C-307 ("re-flown area") and C-510. Acquired from Whittier College, January 2013.

Complete Metadata:
<https://www.library.ucsb.edu/src/airphotos/aerial-photography-information>

FLIGHT LOCATION



Sources: Esri, HERE, Garmin, Intermap, increment P Corp., GEBCO, USGS, FAO, NPS, NRCAN, GeoBase, IGN, Kadaster NL, Ordnance Survey, Esri Japan, METI, Esri China (Hong Kong), swisstopo, © OpenStreetMap contributors, and the GIS User Community

