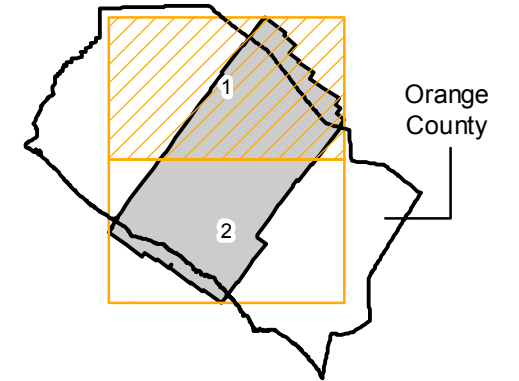


C-1590

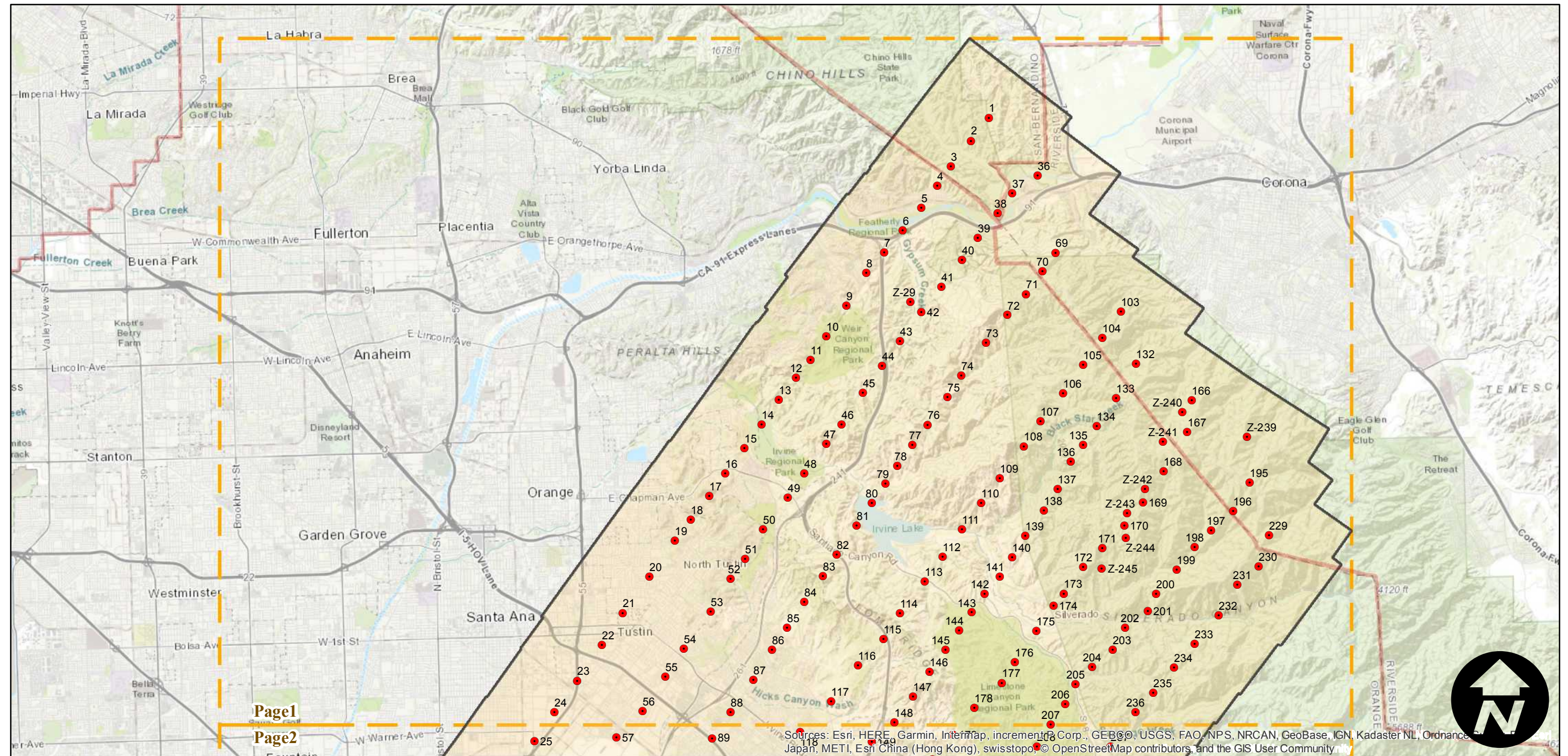
Counties: Orange
Flight date(s): 05-22-1931
Scale: 1:18,000
Overlap: 60-90%

Note: Vicinity of Prado Dam (Santa Ana Mountains) to Newport Beach - Laguna Beach area. Copy negatives acquired from Teledyne, Inc., 1986 made from original nitrate film. Nitrate negatives and prints acquired from Whittier College, January 2013. Nitrate negatives scanned, March 2015.

FLIGHT LOCATION



Complete Metadata:
<https://www.library.ucsb.edu/src/airphotos/aerial-photography-information>



0 2.5 5 10 Miles

Index to Aerial Photography
Page 1 of 2

Scale of this index: 1:140,000

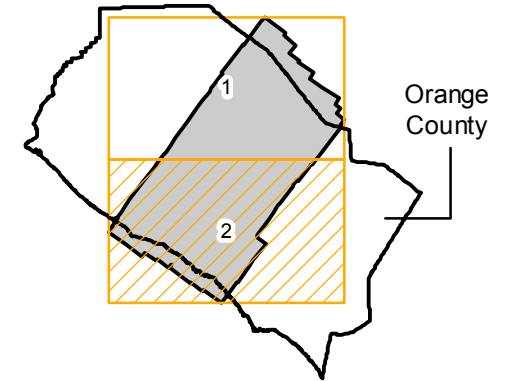
Sources: Esri, HERE, Garmin, Intermap, increment P Corp., GEBCO, USGS, FAO, NPS, NRCAN, GeoBase, IGN, Kadaster NL, Ordnance Survey, Esri Japan, METI, Esri China (Hong Kong), Swisstopo, © OpenStreetMap contributors, and the GIS User Community

C-1590

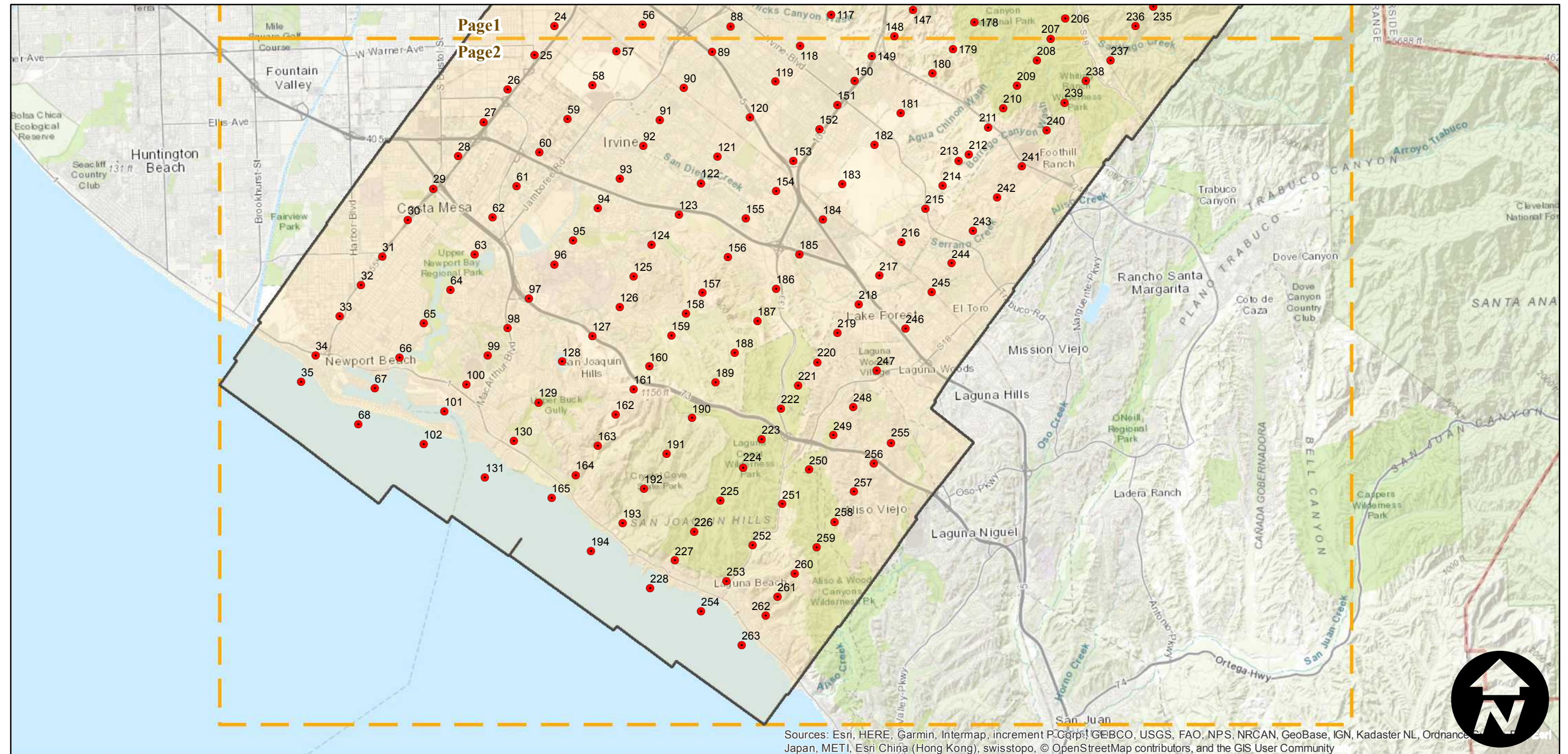
Counties: Orange
Flight date(s): 05-22-1931
Scale: 1:18,000
Overlap: 60-90%

Note: Vicinity of Prado Dam (Santa Ana Mountains) to Newport Beach - Laguna Beach area. Copy negatives acquired from Teledyne, Inc., 1986 made from original nitrate film. Nitrate negatives and prints acquired from Whittier College, January 2013. Nitrate negatives scanned, March 2015.

FLIGHT LOCATION



Complete Metadata:
<https://www.library.ucsb.edu/src/airphotos/aerial-photography-information>



0 2.5 5 10 Miles

Index to Aerial Photography
Page 2 of 2

Scale of this index: 1:140,000