

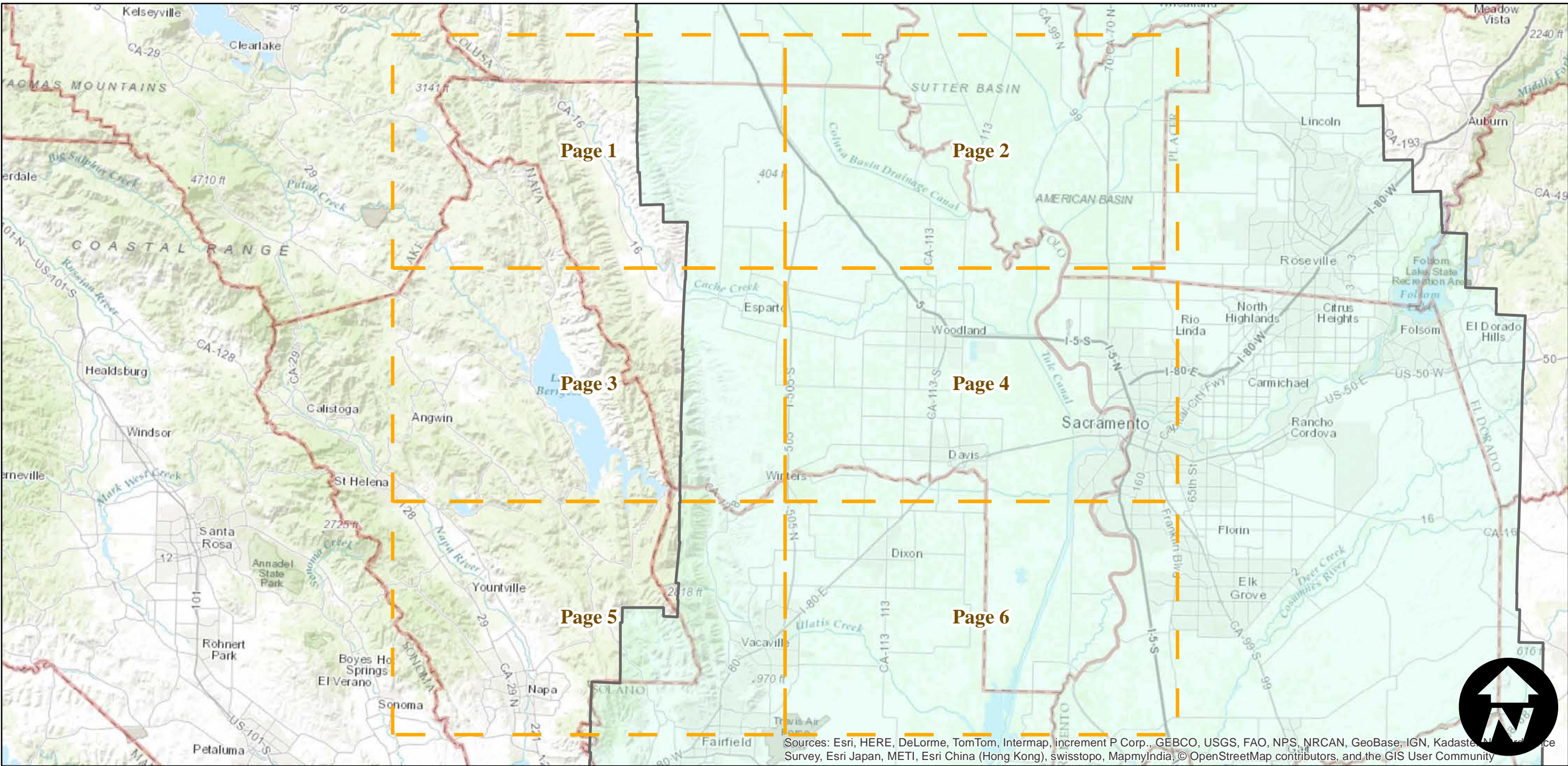
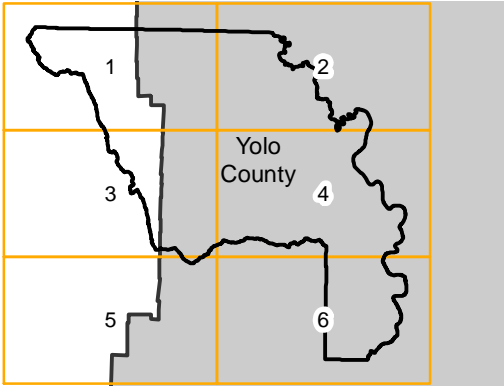
C-13570 (Yolo County)

Counties: Yolo
Flight date(s): 01-01-1949 to 12-31-1949
Scale: 1:20,000
Overlap: 60%

Note: Flight covers several counties along the Sacramento and San Joaquin rivers, and the delta area of central California. Copy negatives acquired from Teledyne, Inc. (1986) were made from original acetate film. Prints and copy negatives acquired from Whittier College, January 2013.

Complete Metadata:
<http://www.library.ucsb.edu/mil/aerial-photography-tools>

FLIGHT LOCATION



0 5 10 20 Miles

Index to Aerial Photography
Page Key

Scale of this index: 1:465,000

Counties: Yolo
Flight date(s): 01-01-1949 to 12-31-1949
Scale: 1:20,000
Overlap: 60%

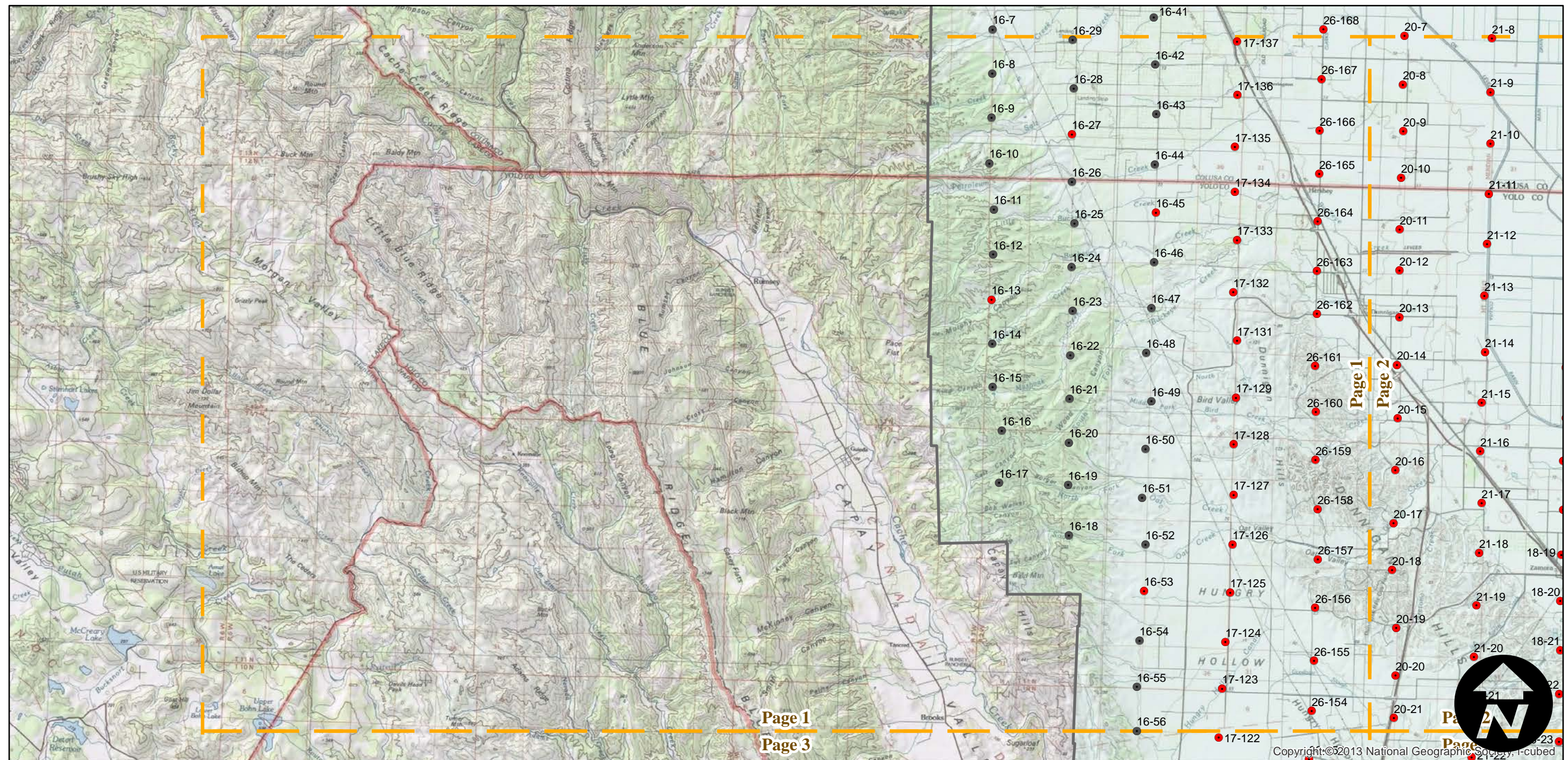
Overlap: 60%

<http://www.library.ucsb.edu/mil/aerial-photography-tools>

Note: Flight covers several counties along the Sacramento and San Joaquin rivers, and the delta area of central California. Copy negatives acquired from Teledyne, Inc. (1986) were made from original acetate film. Prints and copy negatives acquired from Whittier College, January 2013.

- MIL owns frame
- MIL does not own frame

A map of Yolo County, California, divided into six numbered regions for water quality assessment. The regions are defined by a grid of orange lines. Region 1 is the top-left corner, shaded with orange diagonal lines. Region 2 is the top-right corner. Region 3 is the bottom-left corner. Region 4 is the central area, labeled 'Yolo County'. Region 5 is the bottom-left corner, shaded with orange diagonal lines. Region 6 is the bottom-right corner, shaded with orange diagonal lines.



C-13570 (Yolo County)

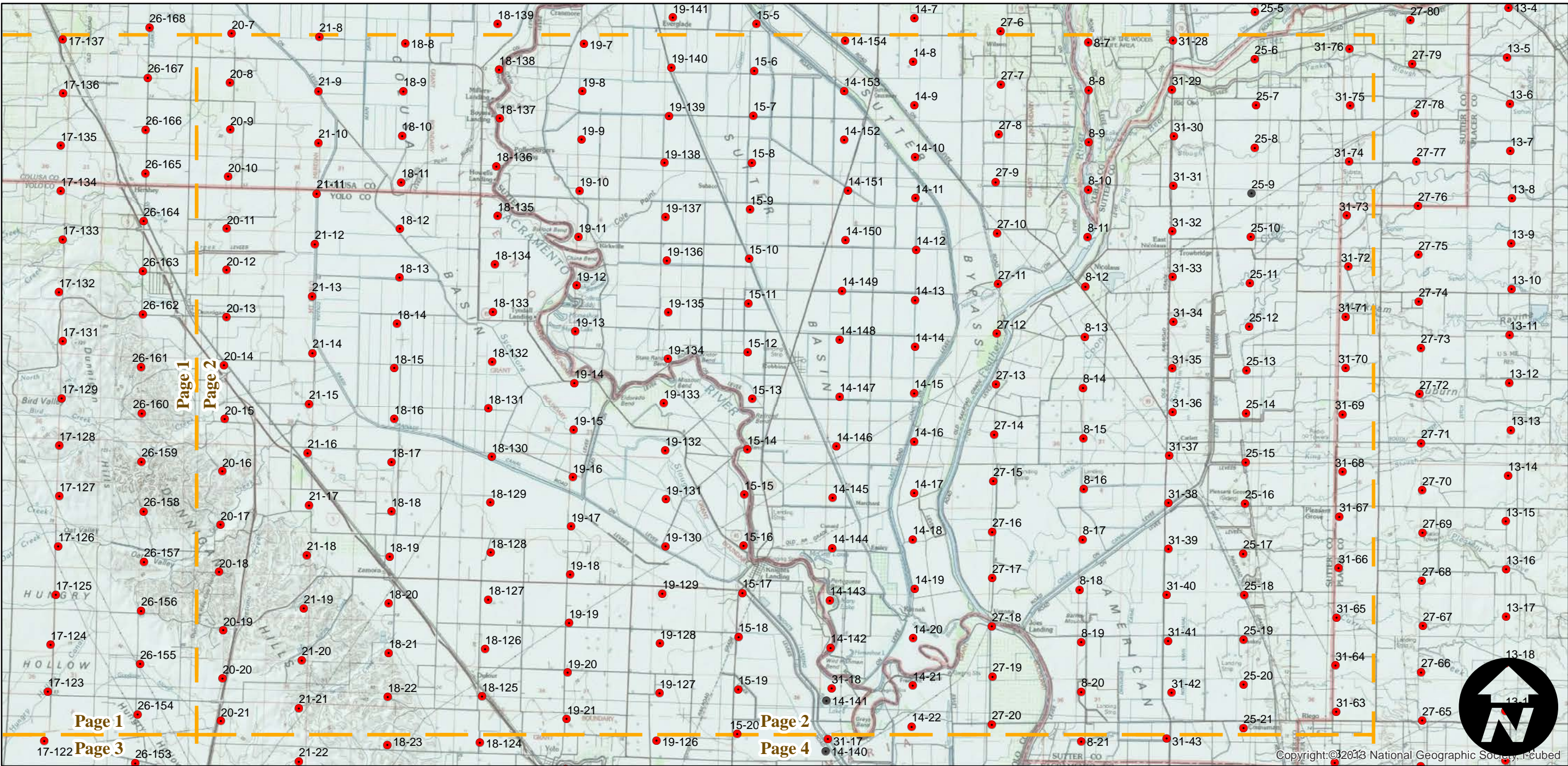
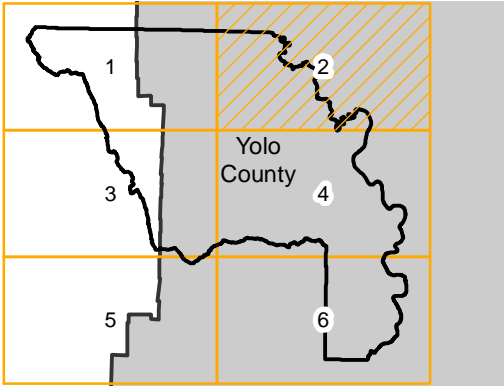
Counties: Yolo
Flight date(s): 01-01-1949 to 12-31-1949
Scale: 1:20,000
Overlap: 60%

Complete Metadata:
<http://www.library.ucsb.edu/mil/aerial-photography-tools>

Note: Flight covers several counties along the Sacramento and San Joaquin rivers, and the delta area of central California. Copy negatives acquired from Teledyne, Inc. (1986) were made from original acetate film. Prints and copy negatives acquired from Whittier College, January 2013.

- MIL owns frame
- MIL does not own frame

FLIGHT LOCATION



0 2 4 8 Miles

Index to Aerial Photography
Page 2 of 6

Scale of this index: 1:155,000

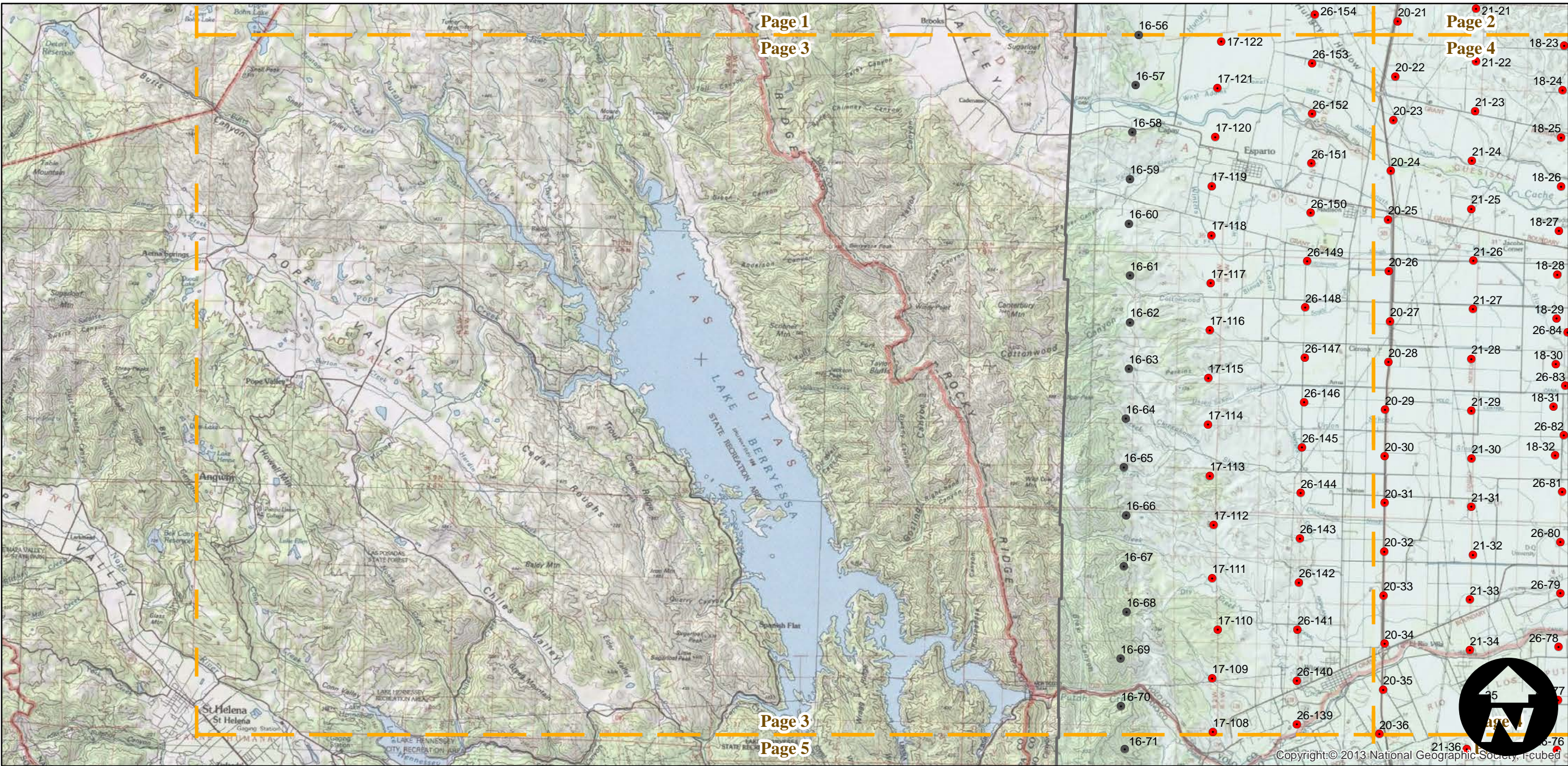
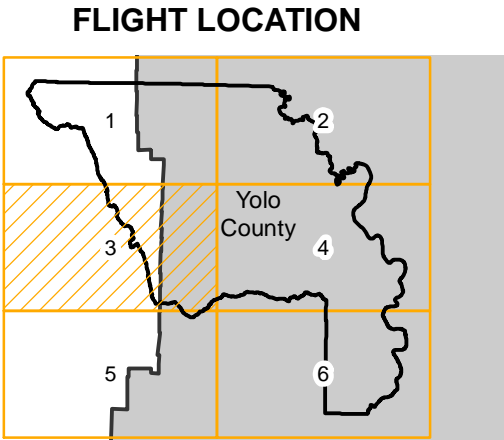
C-13570 (Yolo County)

Counties: Yolo
Flight date(s): 01-01-1949 to 12-31-1949
Scale: 1:20,000
Overlap: 60%

Complete Metadata:
<http://www.library.ucsb.edu/mil/aerial-photography-tools>

Note: Flight covers several counties along the Sacramento and San Joaquin rivers, and the delta area of central California. Copy negatives acquired from Teledyne, Inc. (1986) were made from original acetate film. Prints and copy negatives acquired from Whittier College, January 2013.

- MIL owns frame
- MIL does not own frame



0 2 4 8 Miles

Scale of this index: 1:155,000

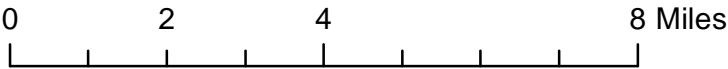
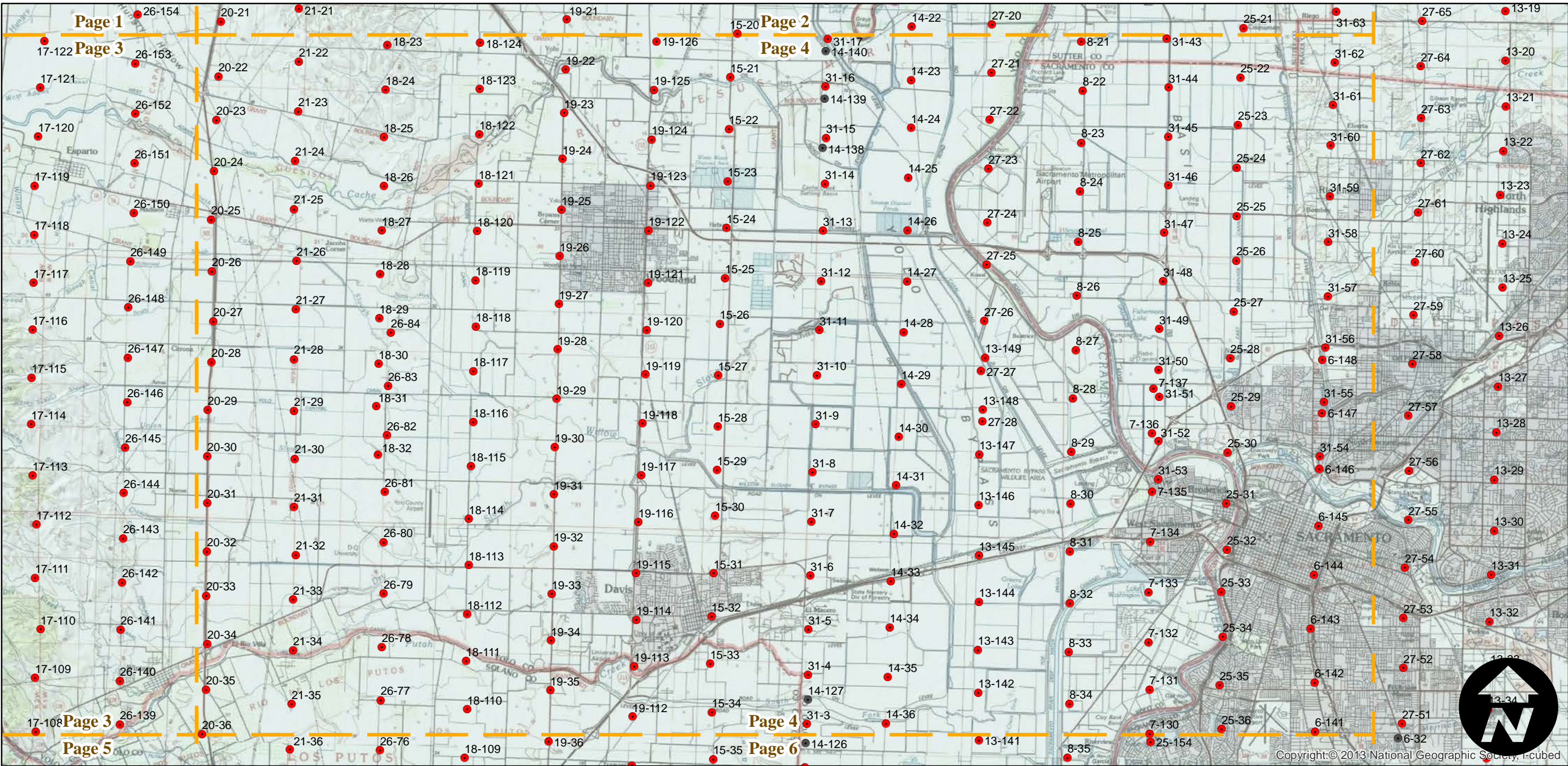
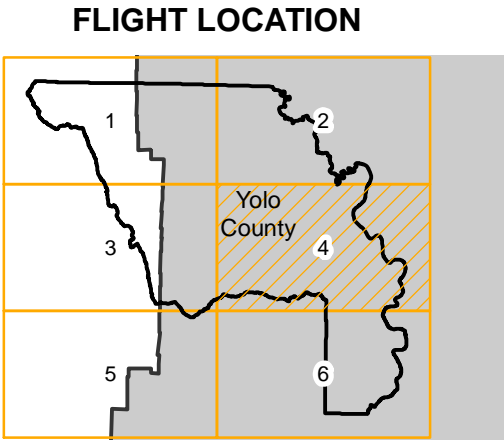
C-13570 (Yolo County)

Counties: Yolo
Flight date(s): 01-01-1949 to 12-31-1949
Scale: 1:20,000
Overlap: 60%

Complete Metadata:
<http://www.library.ucsb.edu/mil/aerial-photography-tools>

Note: Flight covers several counties along the Sacramento and San Joaquin rivers, and the delta area of central California. Copy negatives acquired from Teledyne, Inc. (1986) were made from original acetate film. Prints and copy negatives acquired from Whittier College, January 2013.

- MIL owns frame
- MIL does not own frame



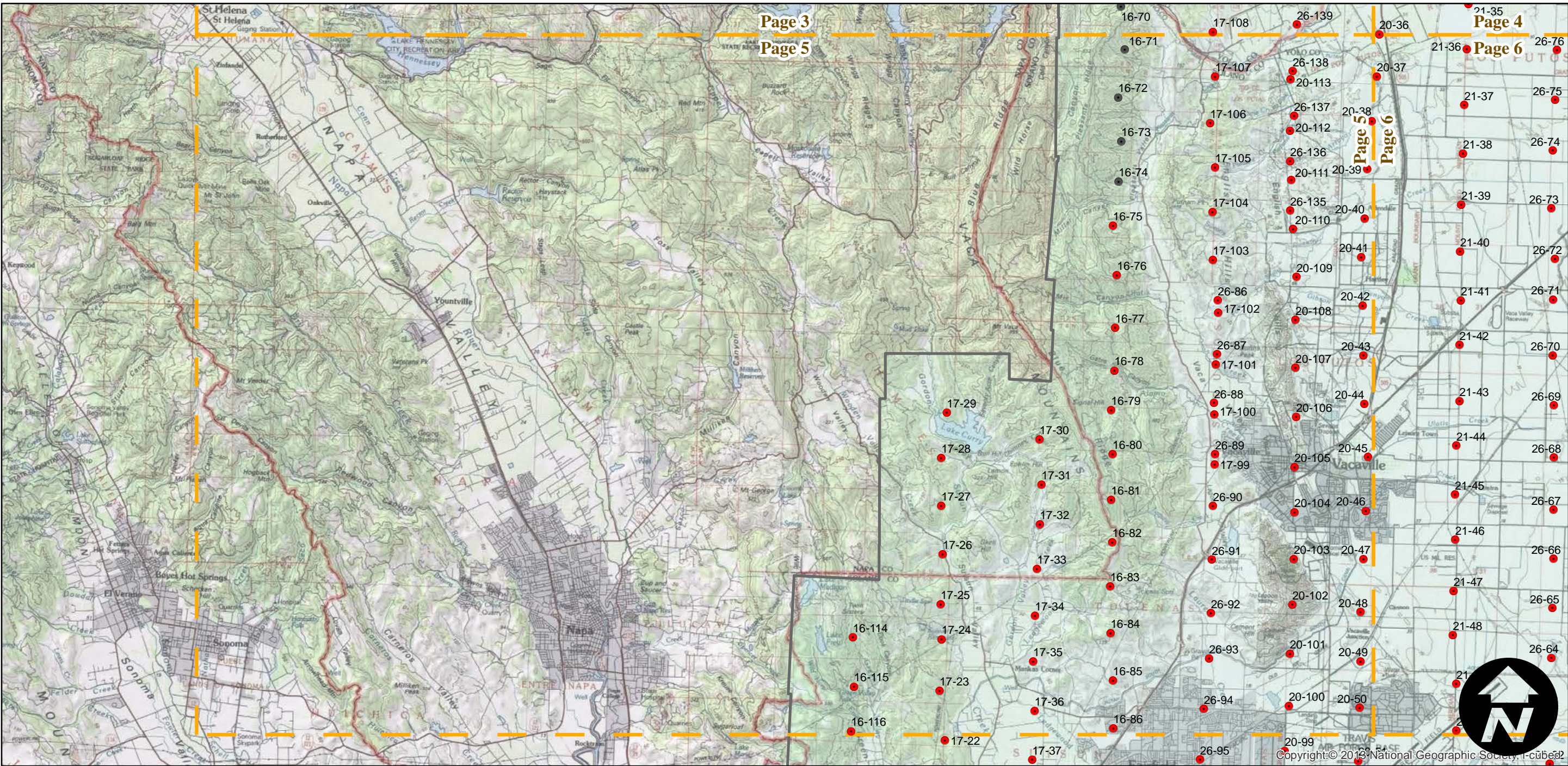
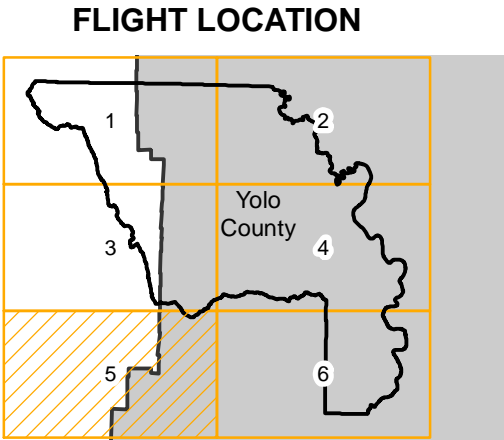
C-13570 (Yolo County)

Counties: Yolo
Flight date(s): 01-01-1949 to 12-31-1949
Scale: 1:20,000
Overlap: 60%

Complete Metadata:
<http://www.library.ucsb.edu/mil/aerial-photography-tools>

Note: Flight covers several counties along the Sacramento and San Joaquin rivers, and the delta area of central California. Copy negatives acquired from Teledyne, Inc. (1986) were made from original acetate film. Prints and copy negatives acquired from Whittier College, January 2013.

- MIL owns frame
- MIL does not own frame



0 2 4 8 Miles

Index to Aerial Photography
Page 5 of 6

Scale of this index: 1:155,000

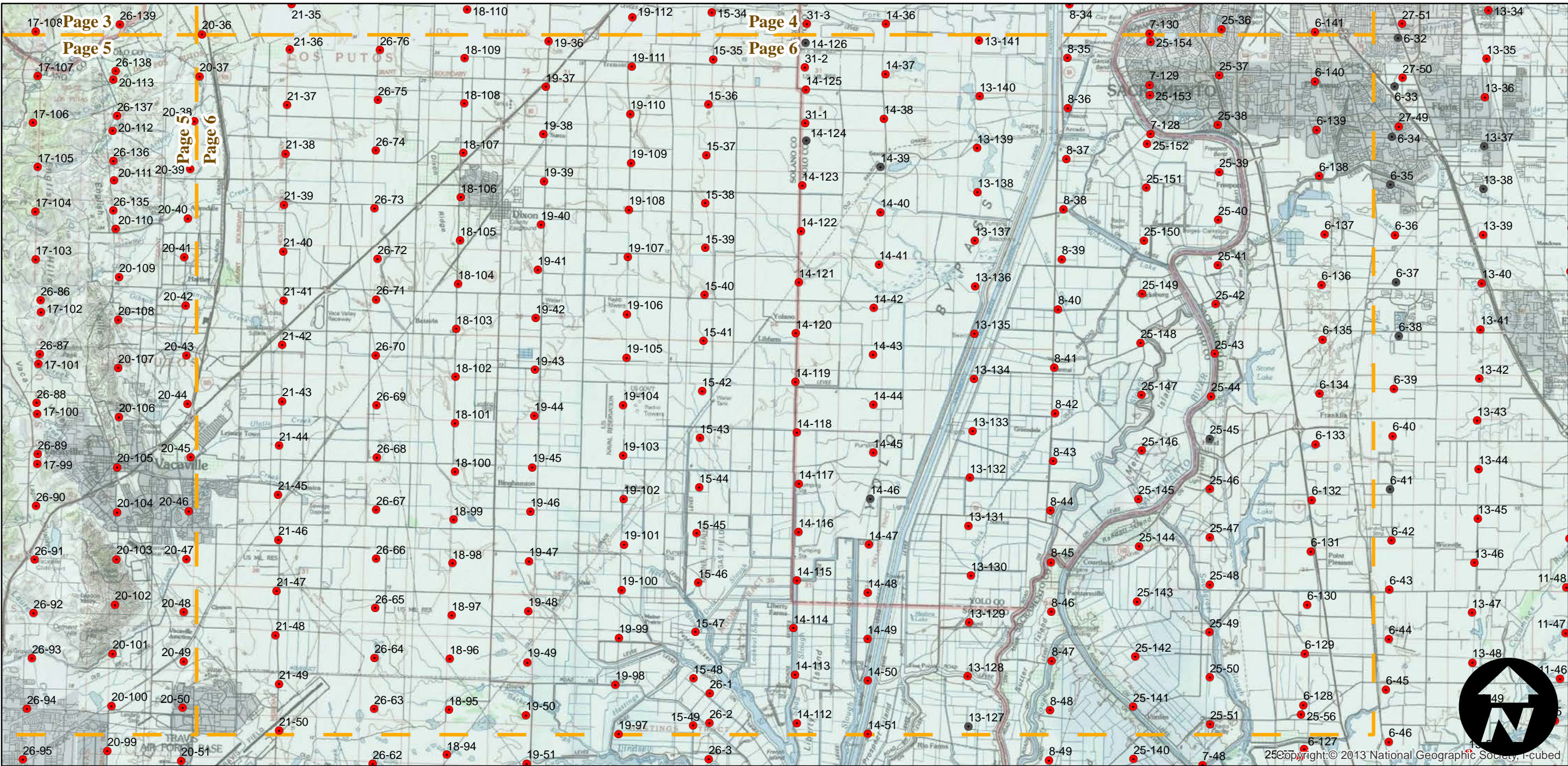
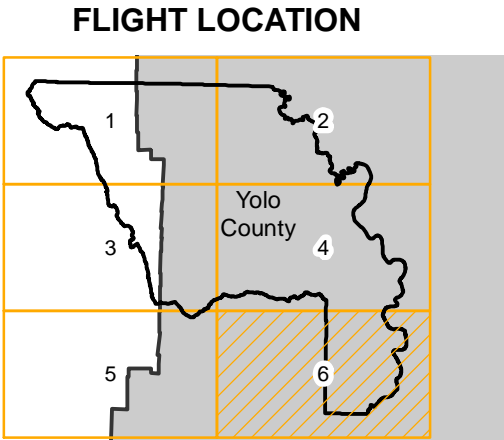
C-13570 (Yolo County)

Counties: Yolo
Flight date(s): 01-01-1949 to 12-31-1949
Scale: 1:20,000
Overlap: 60%

Note: Flight covers several counties along the Sacramento and San Joaquin rivers, and the delta area of central California. Copy negatives acquired from Teledyne, Inc. (1986) were made from original acetate film. Prints and copy negatives acquired from Whittier College, January 2013.

Complete Metadata:
<http://www.library.ucsb.edu/mil/aerial-photography-tools>

- MIL owns frame
- MIL does not own frame



0 2 4 8 Miles

Index to Aerial Photography
Page 6 of 6

Scale of this index: 1:155,000