

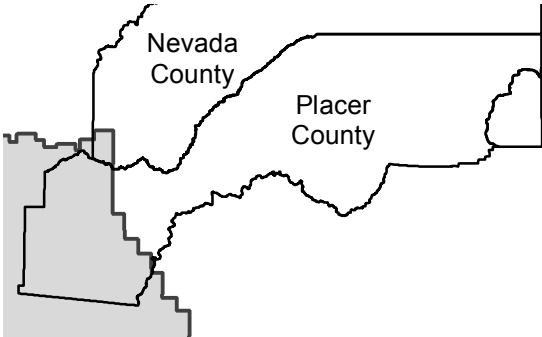
C-13570 (Placer & Nevada Counties)

Counties: Placer, Nevada
Flight date(s): 01-01-1949 to 12-31-1949
Scale: 1:20,000
Overlap: 60%

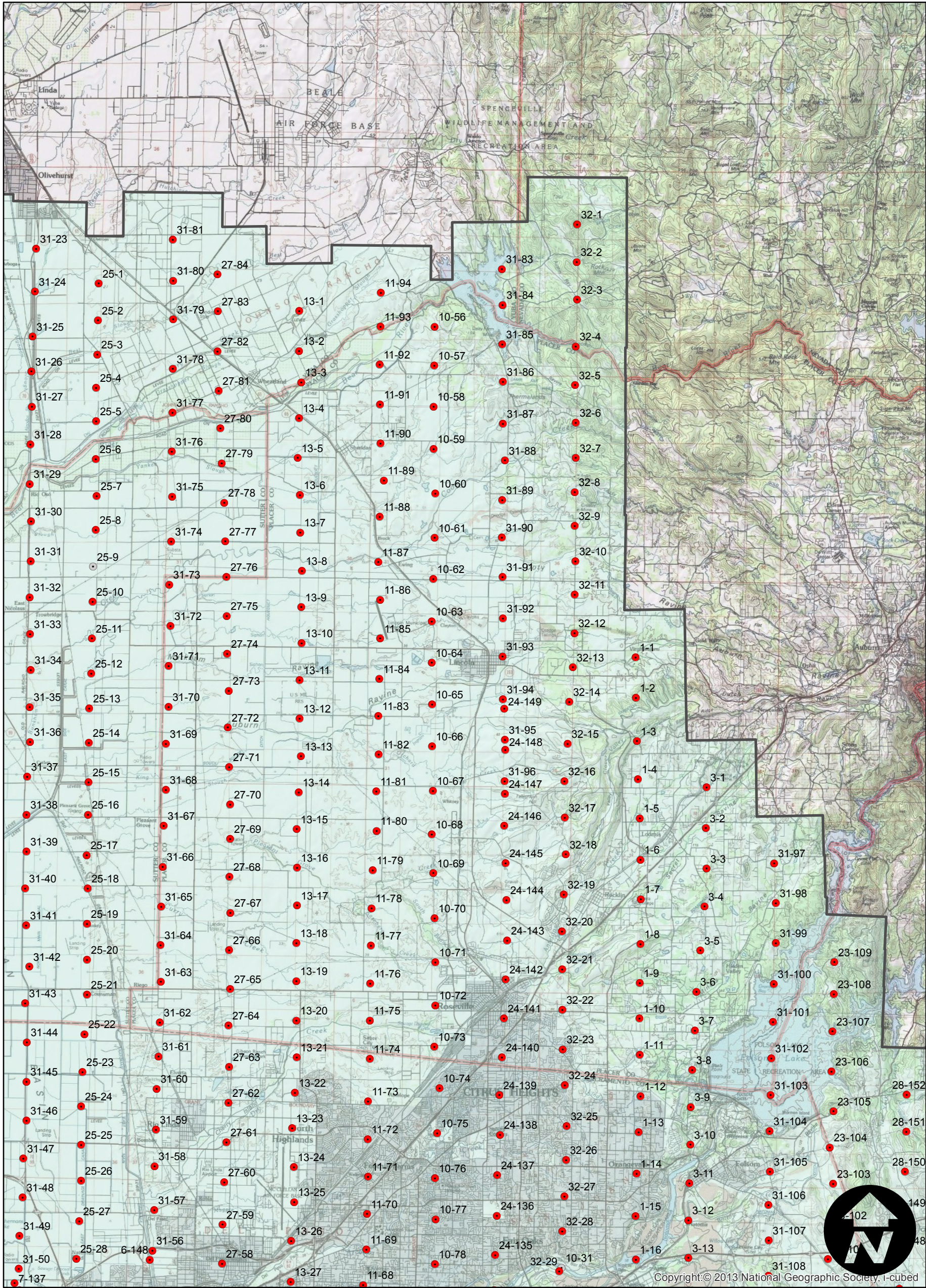
Complete Metadata:
<http://www.library.ucsb.edu/mil/aerial-photography-tools>

Note: Flight covers several counties along the Sacramento and San Joaquin rivers, and the delta area of central California. Copy negatives acquired from Teledyne, Inc. (1986) were made from original acetate film. Prints and copy negatives acquired from Whittier College, January 2013.

FLIGHT LOCATION



- MIL owns frame
- MIL does not own frame



0 2 4 8 Miles

Index to Aerial Photography
Page 1 of 1

Scale of this index: 1:180,000



Copyright: © 2013 National Geographic Society, i-cubed