

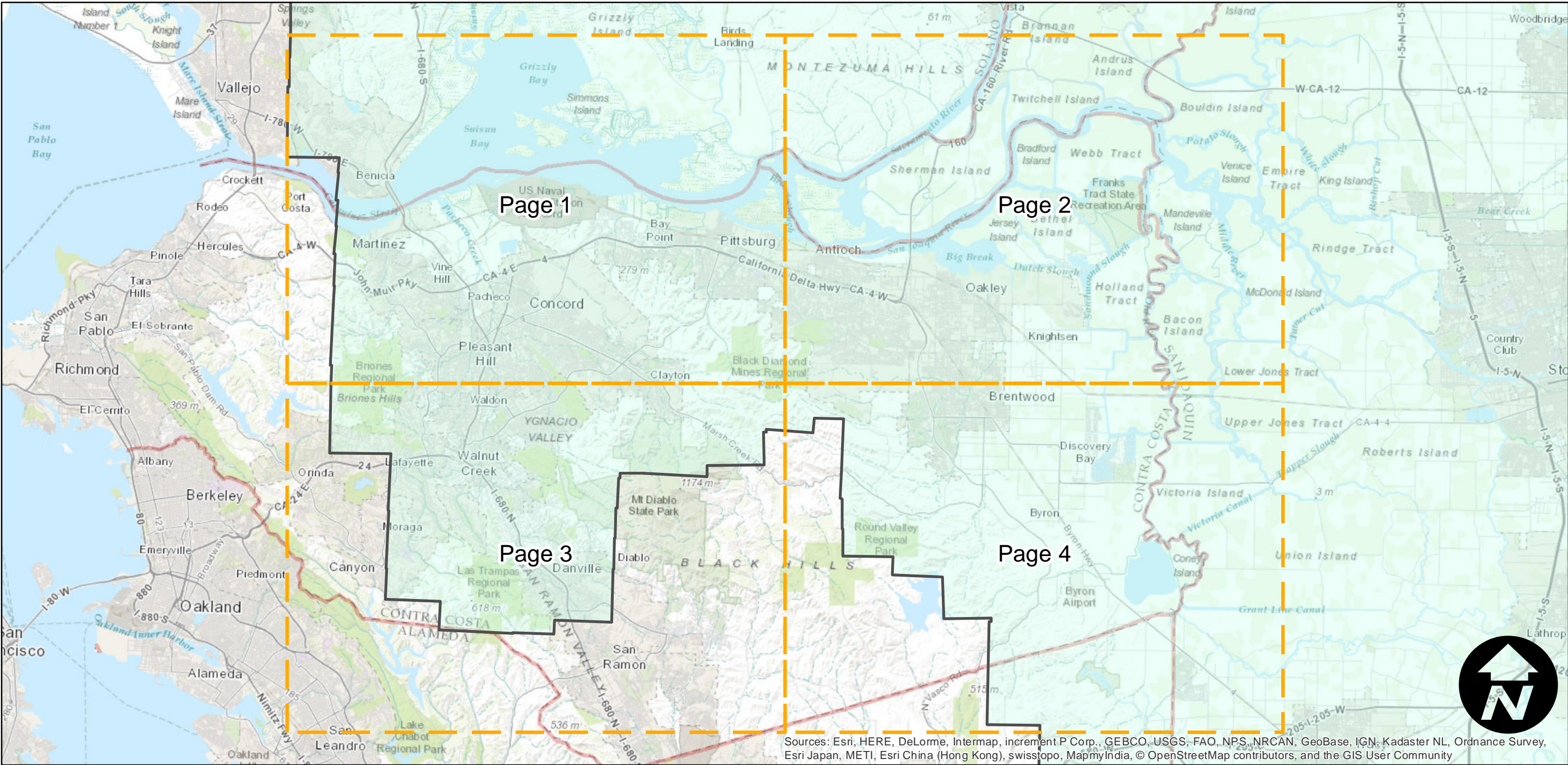
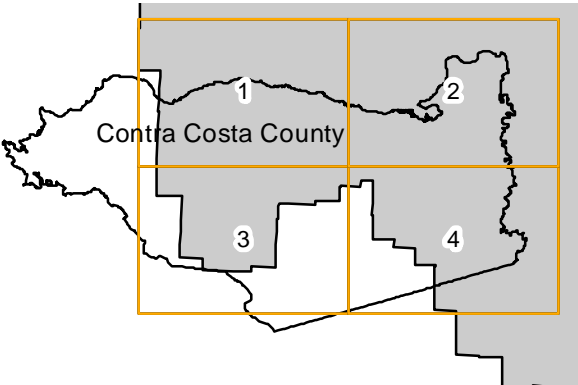
# C-13570 (Contra Costa County)

Counties: Contra Costa  
Flight date(s): 01-01-1949 to 12-31-1949  
Scale: 1:20,000  
Overlap: 60%

Note: Flight covers several counties along the Sacramento and San Joaquin rivers, and the delta area of central California. Copy negatives acquired from Teledyne, Inc. (1986) were made from original acetate film. Prints and copy negatives acquired from Whittier College, January 2013.

Complete Metadata:  
<http://www.library.ucsb.edu/mil/aerial-photography-tools>

## FLIGHT LOCATION



0 5 10 20 Miles

Index to Aerial Photography  
Page Key

Scale of this index: 1:260,000



# C-13570 (Contra Costa County)

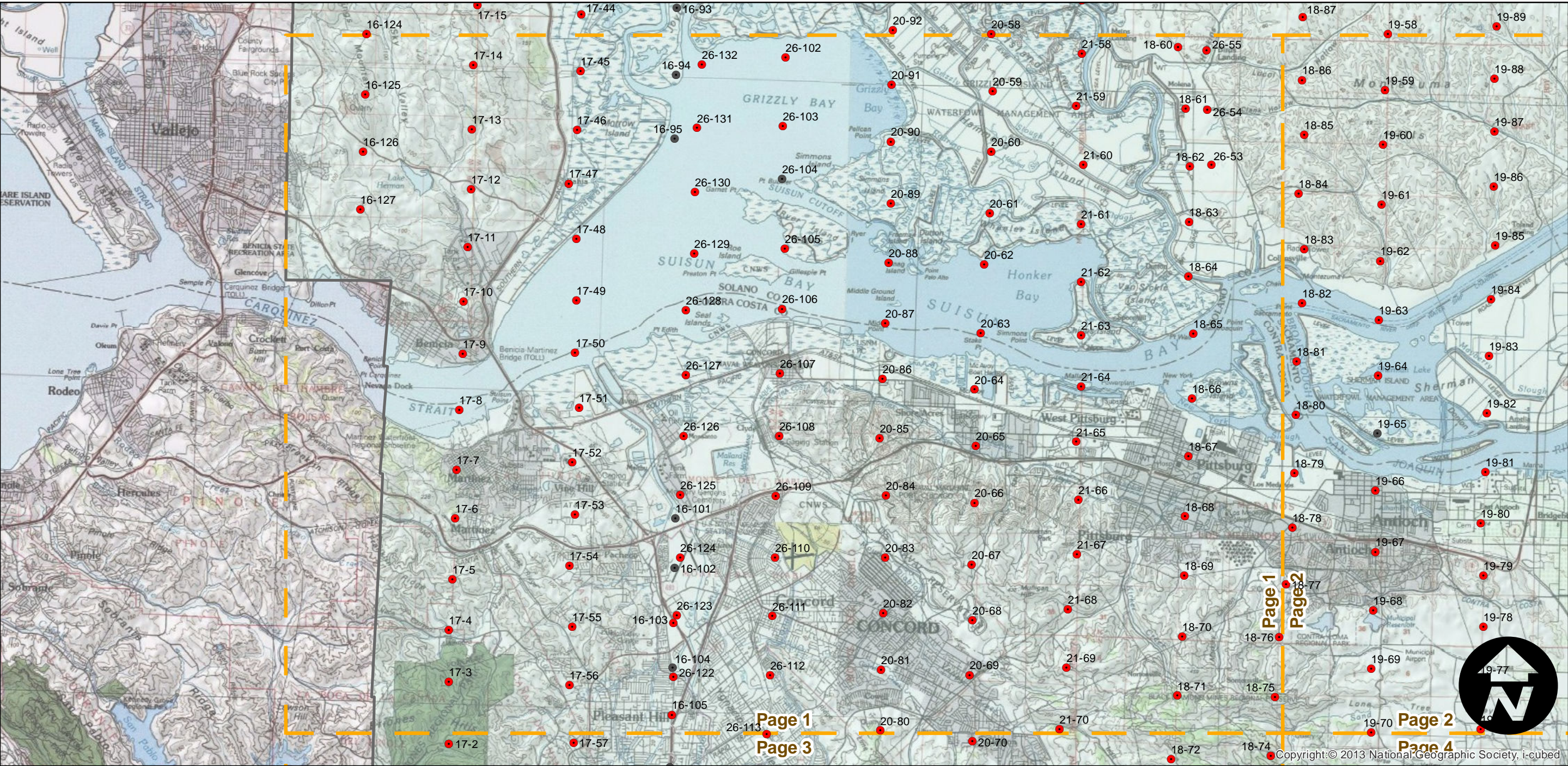
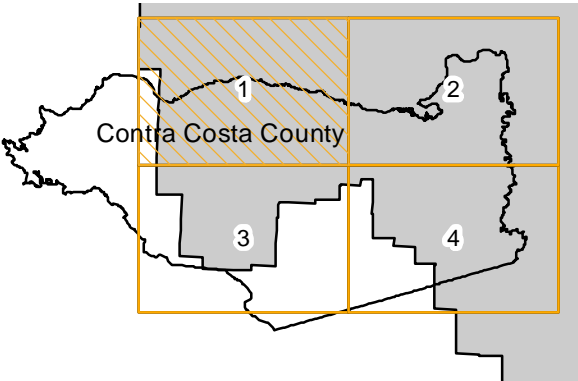
Counties: Contra Costa  
Flight date(s): 01-01-1949 to 12-31-1949  
Scale: 1:20,000  
Overlap: 60%

Complete Metadata:  
<http://www.library.ucsb.edu/mil/aerial-photography-tools>

Note: Flight covers several counties along the Sacramento and San Joaquin rivers, and the delta area of central California. Copy negatives acquired from Teledyne, Inc. (1986) were made from original acetate film. Prints and copy negatives acquired from Whittier College, January 2013.

- MIL owns frame
- MIL does not own frame

## FLIGHT LOCATION



0 2 4 8 Miles

Index to Aerial Photography  
Page 1 of 4

Scale of this index: 1:130,000



# C-13570 (Contra Costa County)

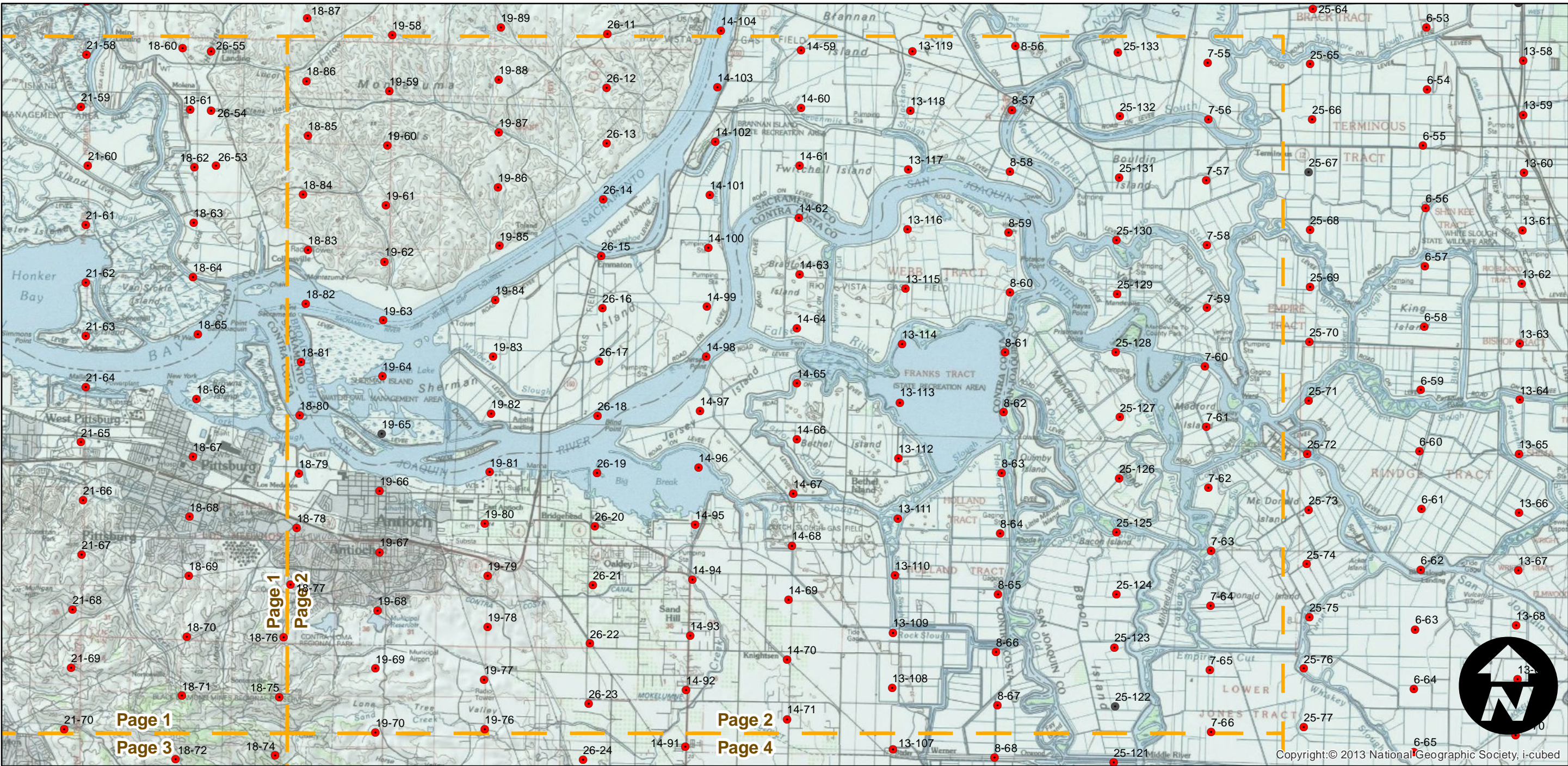
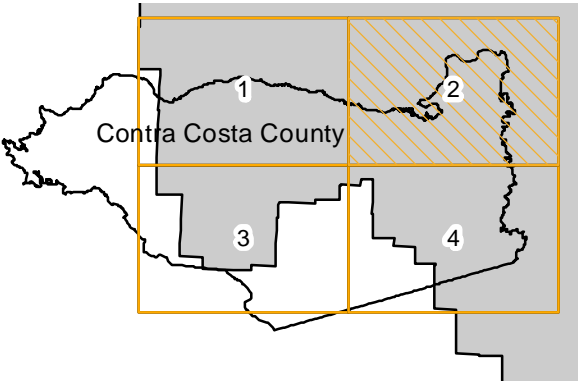
Counties: Contra Costa  
Flight date(s): 01-01-1949 to 12-31-1949  
Scale: 1:20,000  
Overlap: 60%

Complete Metadata:  
<http://www.library.ucsb.edu/mil/aerial-photography-tools>

Note: Flight covers several counties along the Sacramento and San Joaquin rivers, and the delta area of central California. Copy negatives acquired from Teledyne, Inc. (1986) were made from original acetate film. Prints and copy negatives acquired from Whittier College, January 2013.

- MIL owns frame
- MIL does not own frame

## FLIGHT LOCATION





# C-13570 (Contra Costa County)

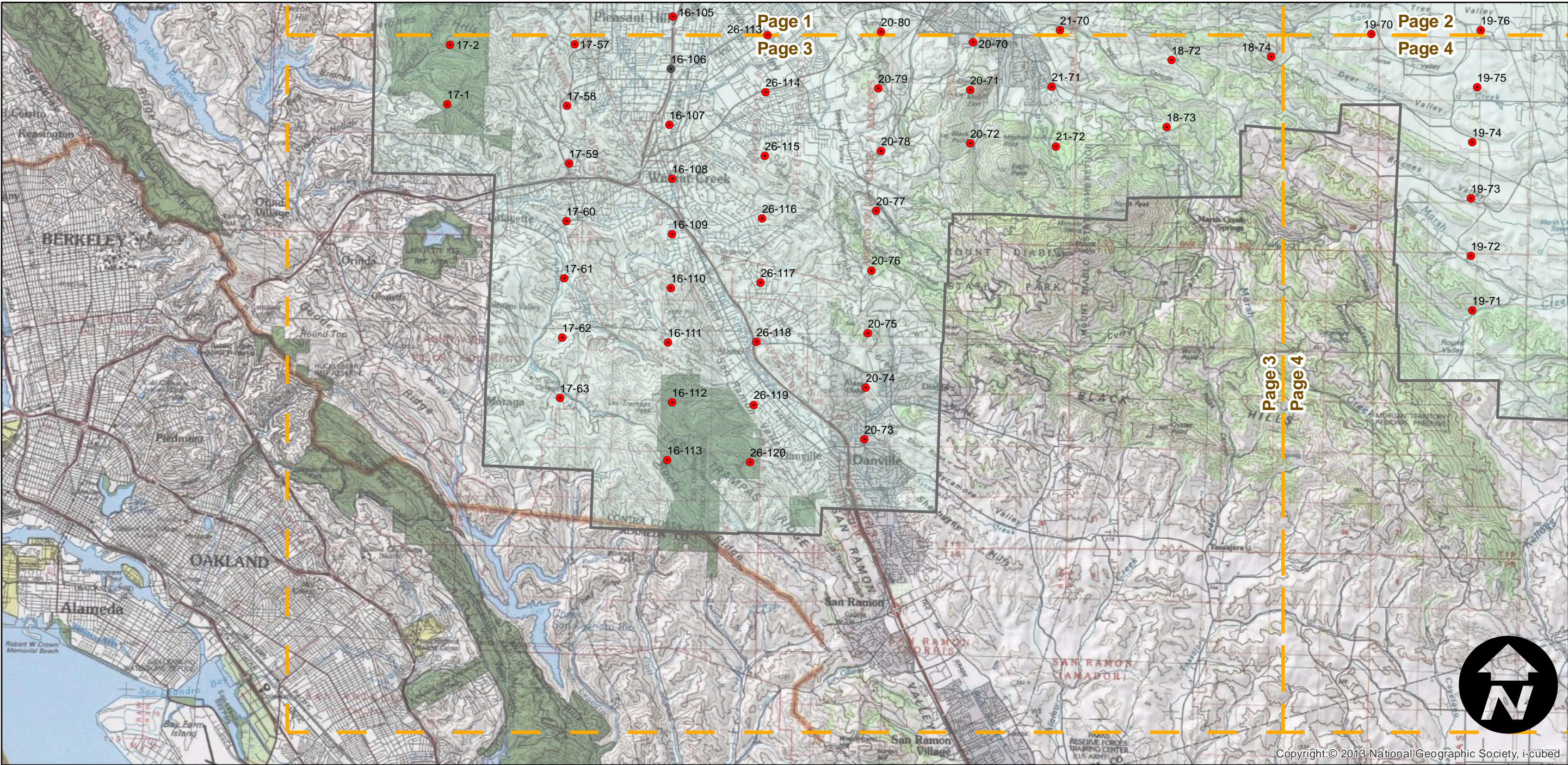
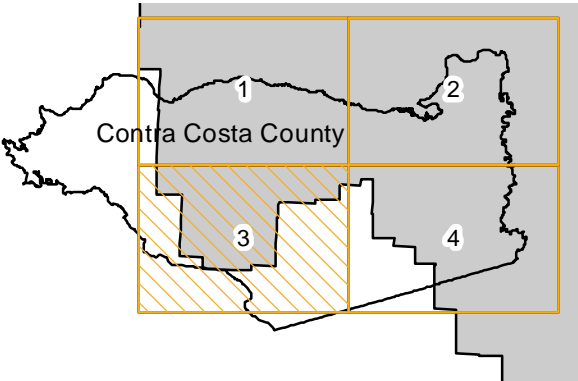
Counties: Contra Costa  
Flight date(s): 01-01-1949 to 12-31-1949  
Scale: 1:20,000  
Overlap: 60%

Complete Metadata:  
<http://www.library.ucsb.edu/mil/aerial-photography-tools>

Note: Flight covers several counties along the Sacramento and San Joaquin rivers, and the delta area of central California. Copy negatives acquired from Teledyne, Inc. (1986) were made from original acetate film. Prints and copy negatives acquired from Whittier College, January 2013.

- MIL owns frame
- MIL does not own frame

## FLIGHT LOCATION



0 2 4 8 Miles

Index to Aerial Photography  
Page 3 of 4

Scale of this index: 1:130,000



# C-13570 (Contra Costa County)

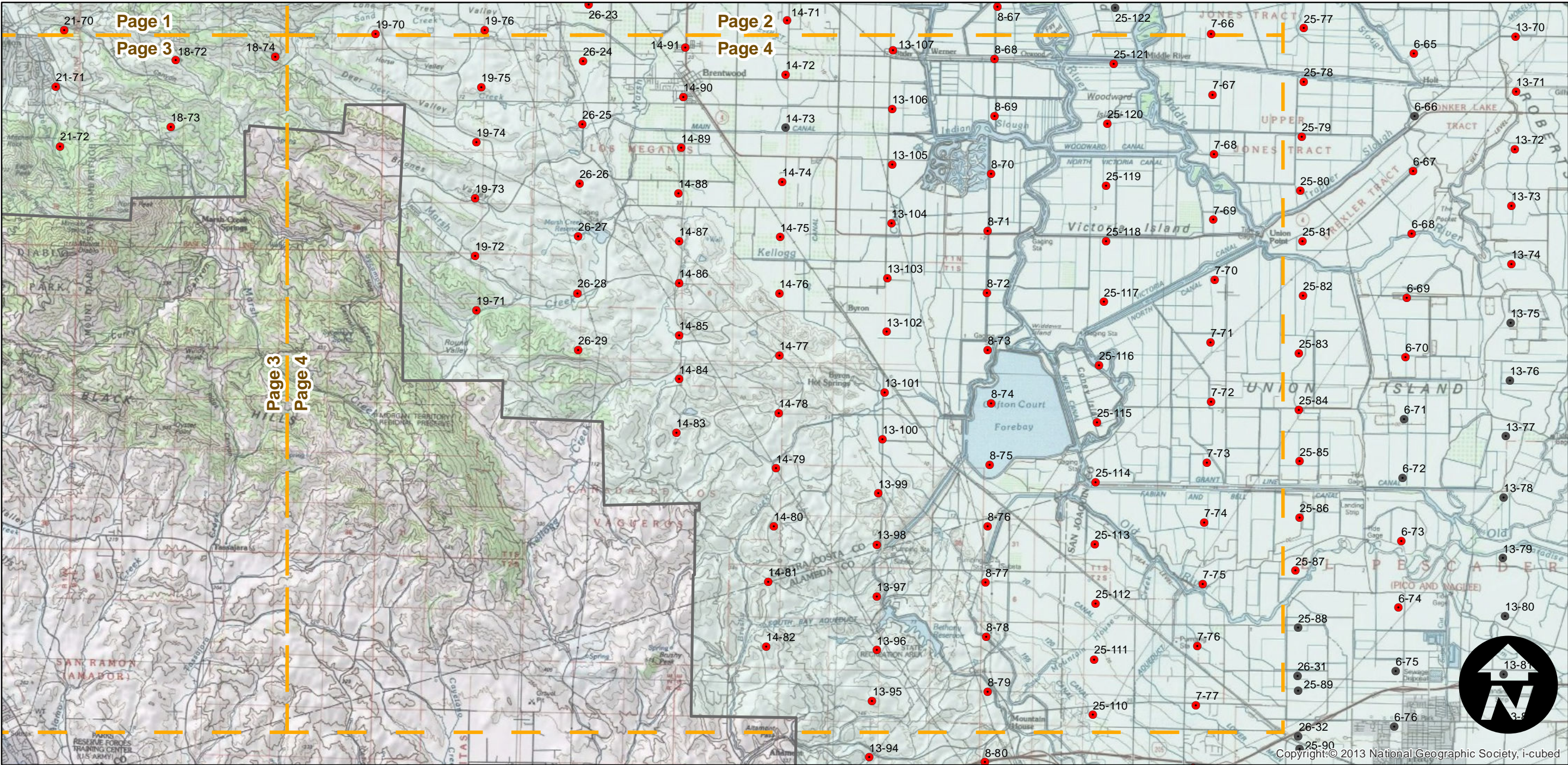
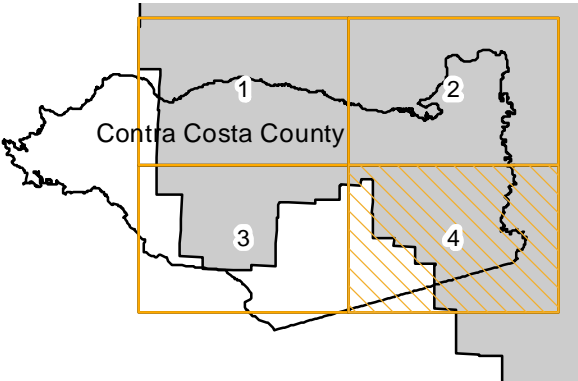
Counties: Contra Costa  
Flight date(s): 01-01-1949 to 12-31-1949  
Scale: 1:20,000  
Overlap: 60%

Complete Metadata:  
<http://www.library.ucsb.edu/mil/aerial-photography-tools>

Note: Flight covers several counties along the Sacramento and San Joaquin rivers, and the delta area of central California. Copy negatives acquired from Teledyne, Inc. (1986) were made from original acetate film. Prints and copy negatives acquired from Whittier College, January 2013.

- MIL owns frame
- MIL does not own frame

## FLIGHT LOCATION



0 2 4 8 Miles

Index to Aerial Photography  
Page 4 of 4

Scale of this index: 1:130,000