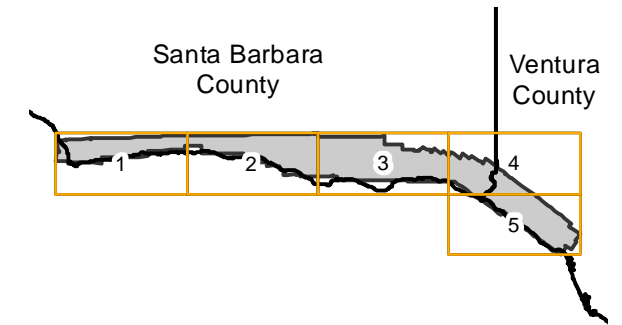


C-12790

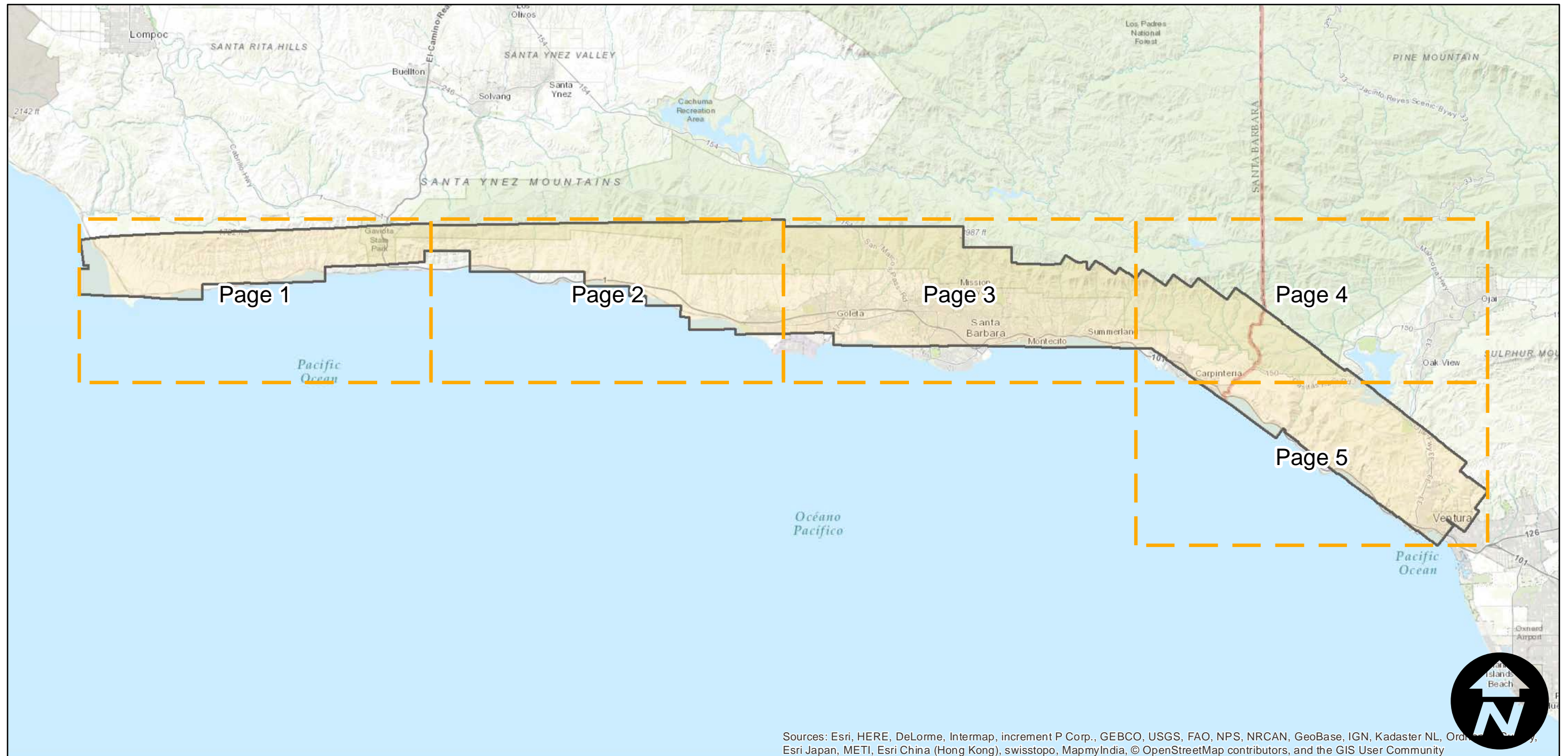
Counties: Santa Barbara, Ventura
Flight date(s): 07-22-1948 to 07-30-1948
Scale: 1:7,200
Overlap: 60%

Note: Ventura River to Point Conception. MIL does not hold entire flight. Imagery acquired from Teledyne, 1986 and from Whittier College, January 2013.

FLIGHT LOCATION



Complete Metadata:
<http://www.library.ucsb.edu/map-imagery-lab/aerial-photography-information>



Sources: Esri, HERE, DeLorme, Intermap, increment P Corp., GEBCO, USGS, FAO, NPS, NRCAN, GeoBase, IGN, Kadaster NL, Ordnance Survey, Esri Japan, METI, Esri China (Hong Kong), swisstopo, MapmyIndia, © OpenStreetMap contributors, and the GIS User Community



Index to Aerial Photography
Page Key

Scale of this index: 1:335,000

C-12790

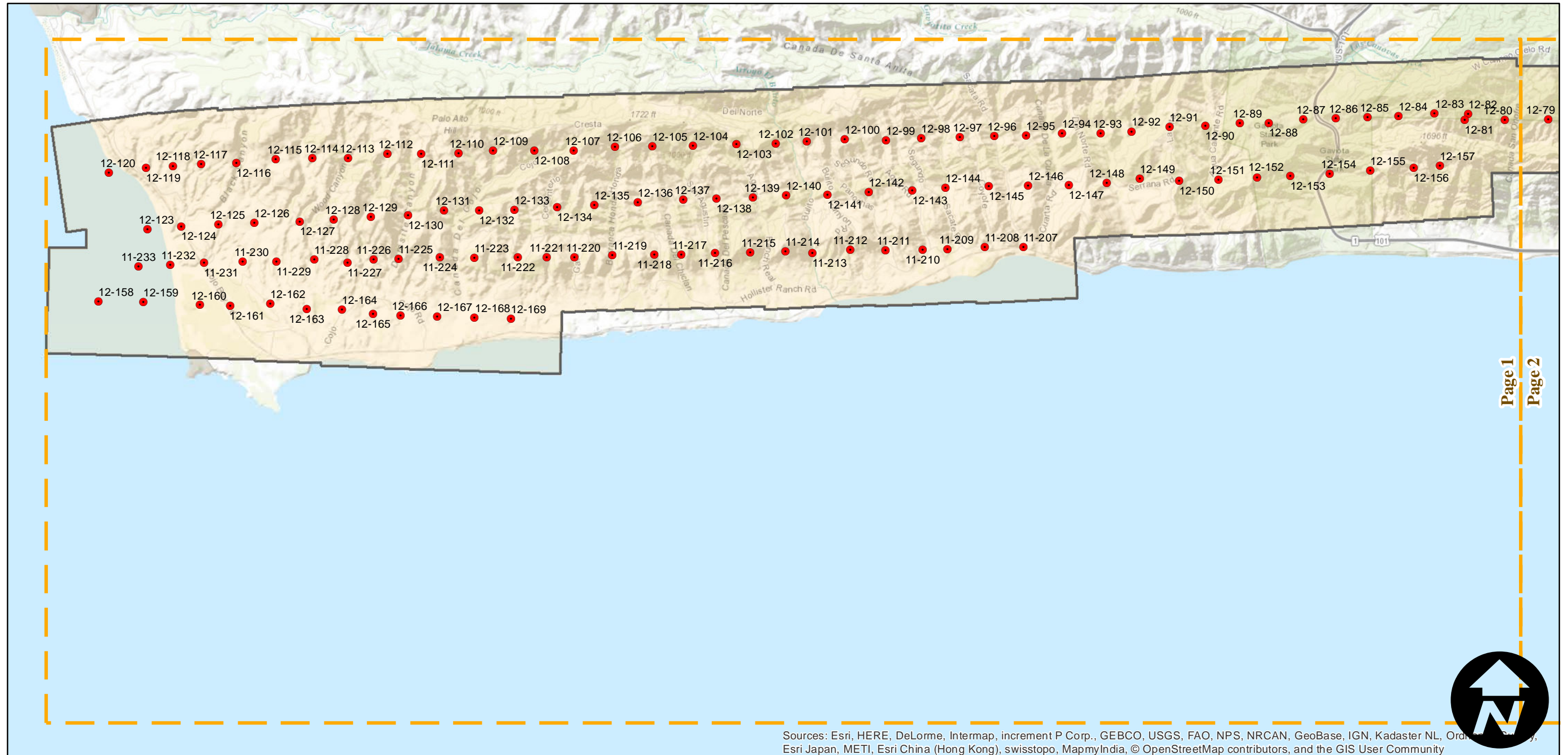
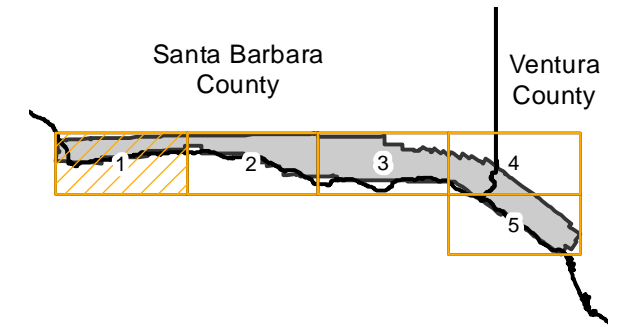
Counties: Santa Barbara, Ventura
Flight date(s): 07-22-1948 to 07-30-1948
Scale: 1:7,200
Overlap: 60%

Complete Metadata:
<http://www.library.ucsb.edu/map-imagery-lab/aerial-photography-information>

Note: Ventura River to Point Conception. MIL does not hold entire flight. Imagery acquired from Teledyne, 1986 and from Whittier College, January 2013.

- MIL owns frame
- MIL does not own frame

FLIGHT LOCATION



Page 1
Page 2

Sources: Esri, HERE, DeLorme, Intermap, increment P Corp., GEBCO, USGS, FAO, NPS, NRCAN, GeoBase, IGN, Kadaster NL, Ordnance Survey, Esri Japan, METI, Esri China (Hong Kong), swisstopo, MapmyIndia, © OpenStreetMap contributors, and the GIS User Community

0 1 2 4 Miles

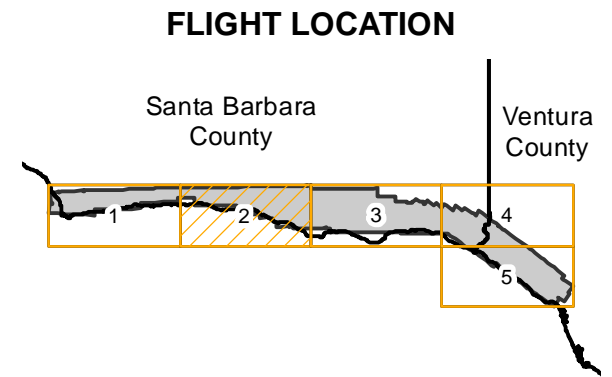
Index to Aerial Photography
Page 1 of 5

Scale of this index: 1:80,000

C-12790

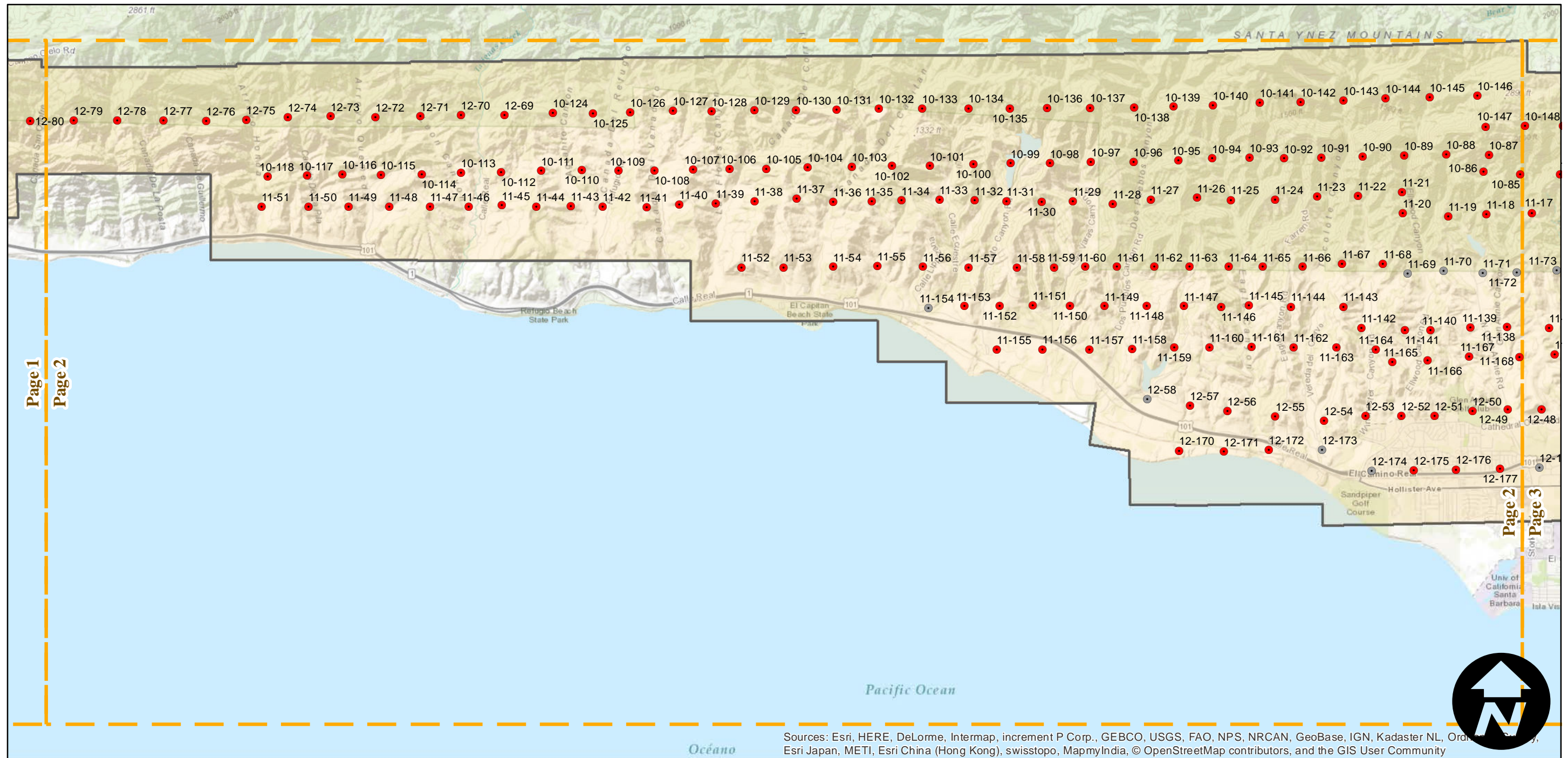
Counties: Santa Barbara, Ventura
Flight date(s): 07-22-1948 to 07-30-1948
Scale: 1:7,200
Overlap: 60%

Note: Ventura River to Point Conception. MIL does not hold entire flight. Imagery acquired from Teledyne, 1986 and from Whittier College, January 2013.



Complete Metadata:
<http://www.library.ucsb.edu/map-imagery-lab/aerial-photography-information>

- MIL owns frame
- MIL does not own frame



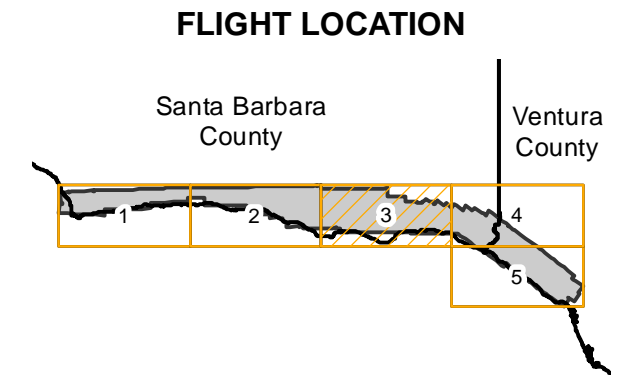
Sources: Esri, HERE, DeLorme, Intermap, increment P Corp., GEBCO, USGS, FAO, NPS, NRCAN, GeoBase, IGN, Kadaster NL, Ordnance Survey, Esri Japan, METI, Esri China (Hong Kong), swisstopo, MapmyIndia, © OpenStreetMap contributors, and the GIS User Community

0 1 2 4 Miles

C-12790

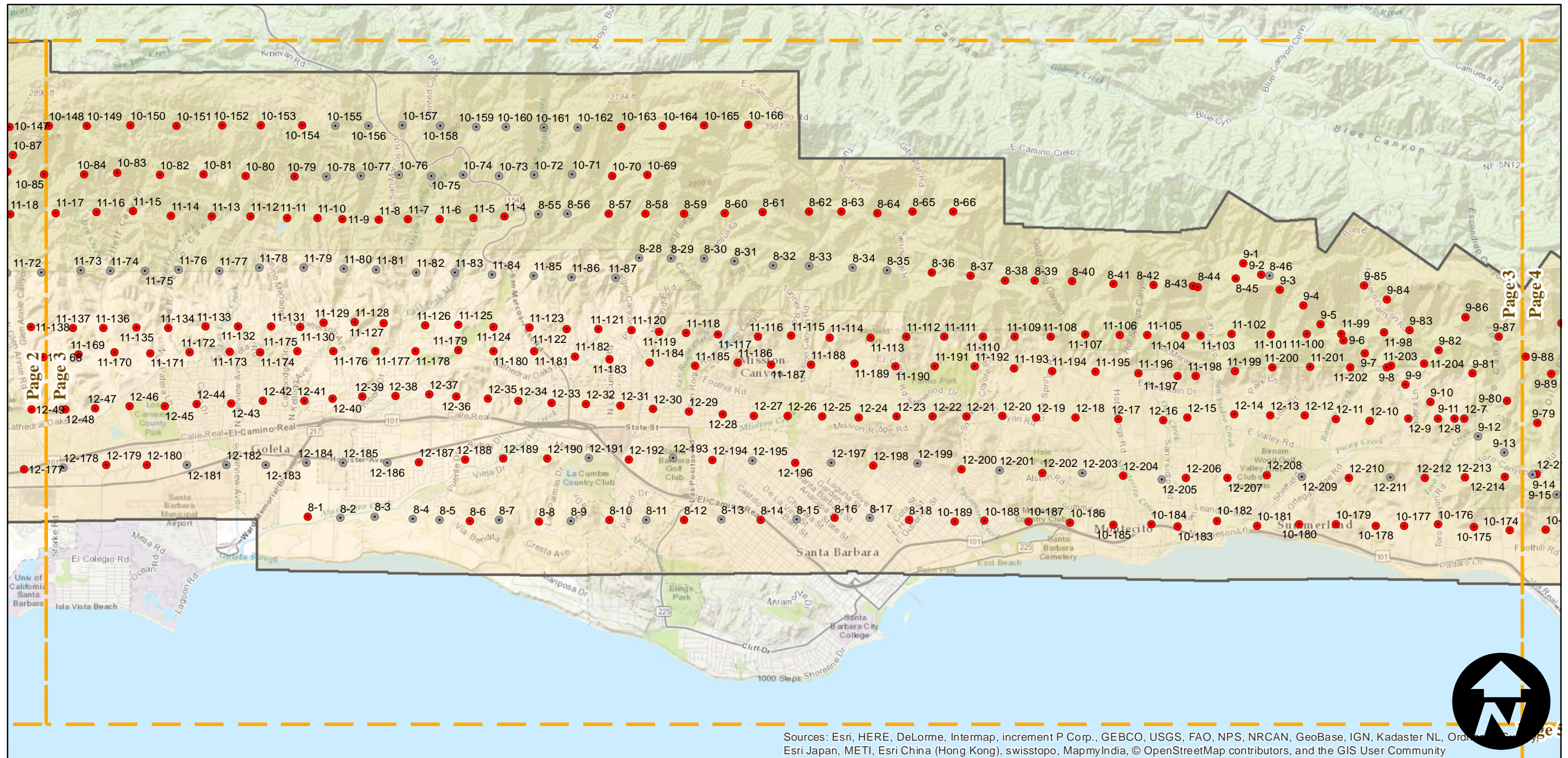
Counties: Santa Barbara, Ventura
Flight date(s): 07-22-1948 to 07-30-1948
Scale: 1:7,200
Overlap: 60%

Note: Ventura River to Point Conception. MIL does not hold entire flight. Imagery acquired from Teledyne, 1986 and from Whittier College, January 2013.



Complete Metadata:
<http://www.library.ucsb.edu/map-imagery-lab/aerial-photography-information>

- MIL owns frame
- MIL does not own frame



Sources: Esri, HERE, DeLorme, Intermap, increment P Corp., GEBCO, USGS, FAO, NPS, NRCAN, GeoBase, IGN, Kadaster NL, Ordnance Survey, Esri Japan, METI, Esri China (Hong Kong), swisstopo, MapmyIndia, © OpenStreetMap contributors, and the GIS User Community

0 1 2 4 Miles

Index to Aerial Photography
Page 3 of 5

Scale of this index: 1:80,000

C-12790

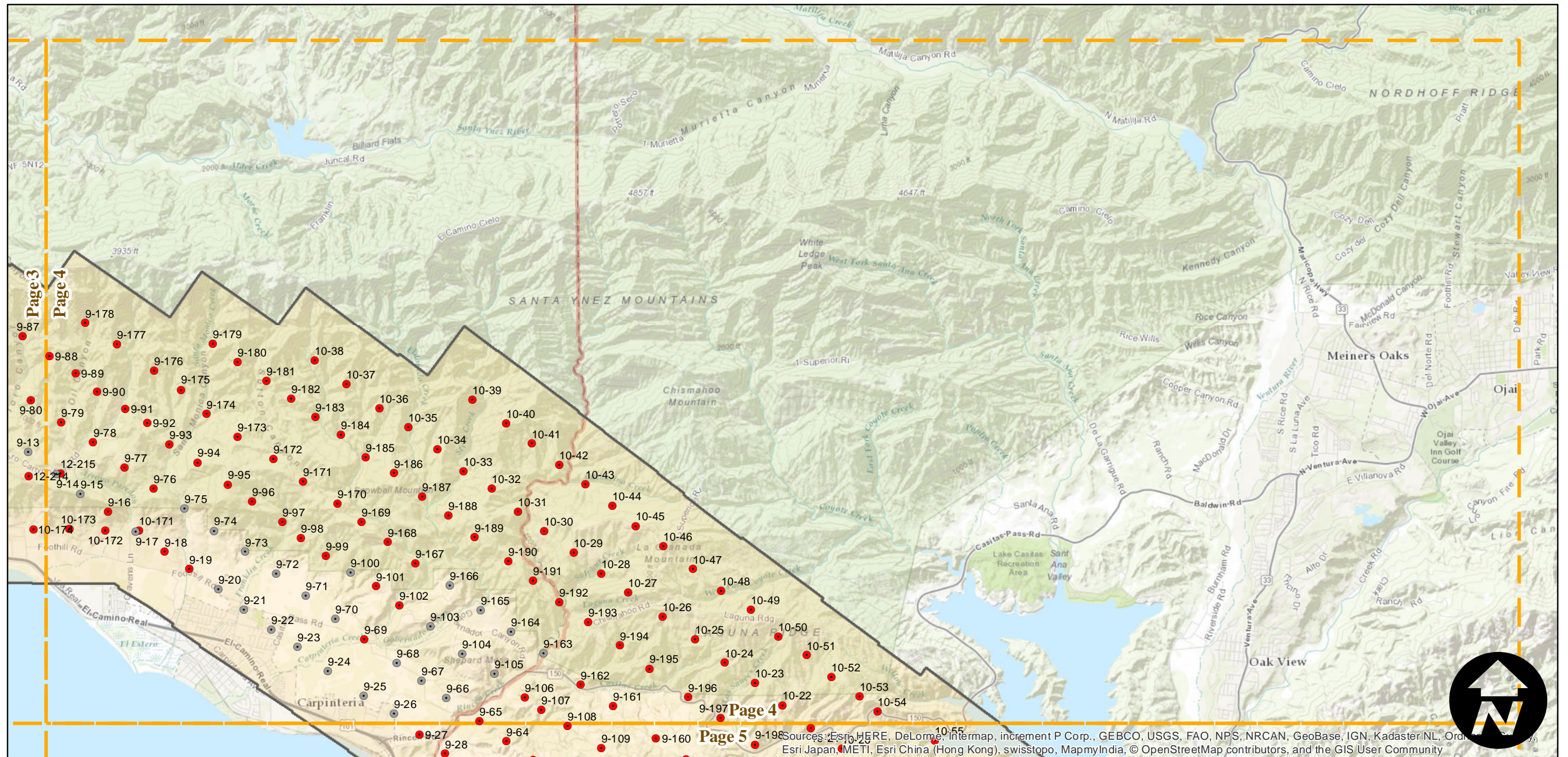
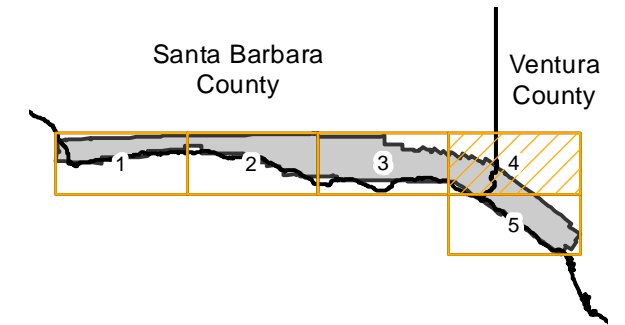
Counties: Santa Barbara, Ventura
Flight date(s): 07-22-1948 to 07-30-1948
Scale: 1:7,200
Overlap: 60%

Complete Metadata:
<http://www.library.ucsb.edu/map-imagery-lab/aerial-photography-information>

Note: Ventura River to Point Conception. MIL does not hold entire flight. Imagery acquired from Teledyne, 1986 and from Whittier College, January 2013.

- MIL owns frame
- MIL does not own frame

FLIGHT LOCATION



0 1 2 4 Miles

Index to Aerial Photography
Page 4 of 5

Scale of this index: 1:80,000



C-12790

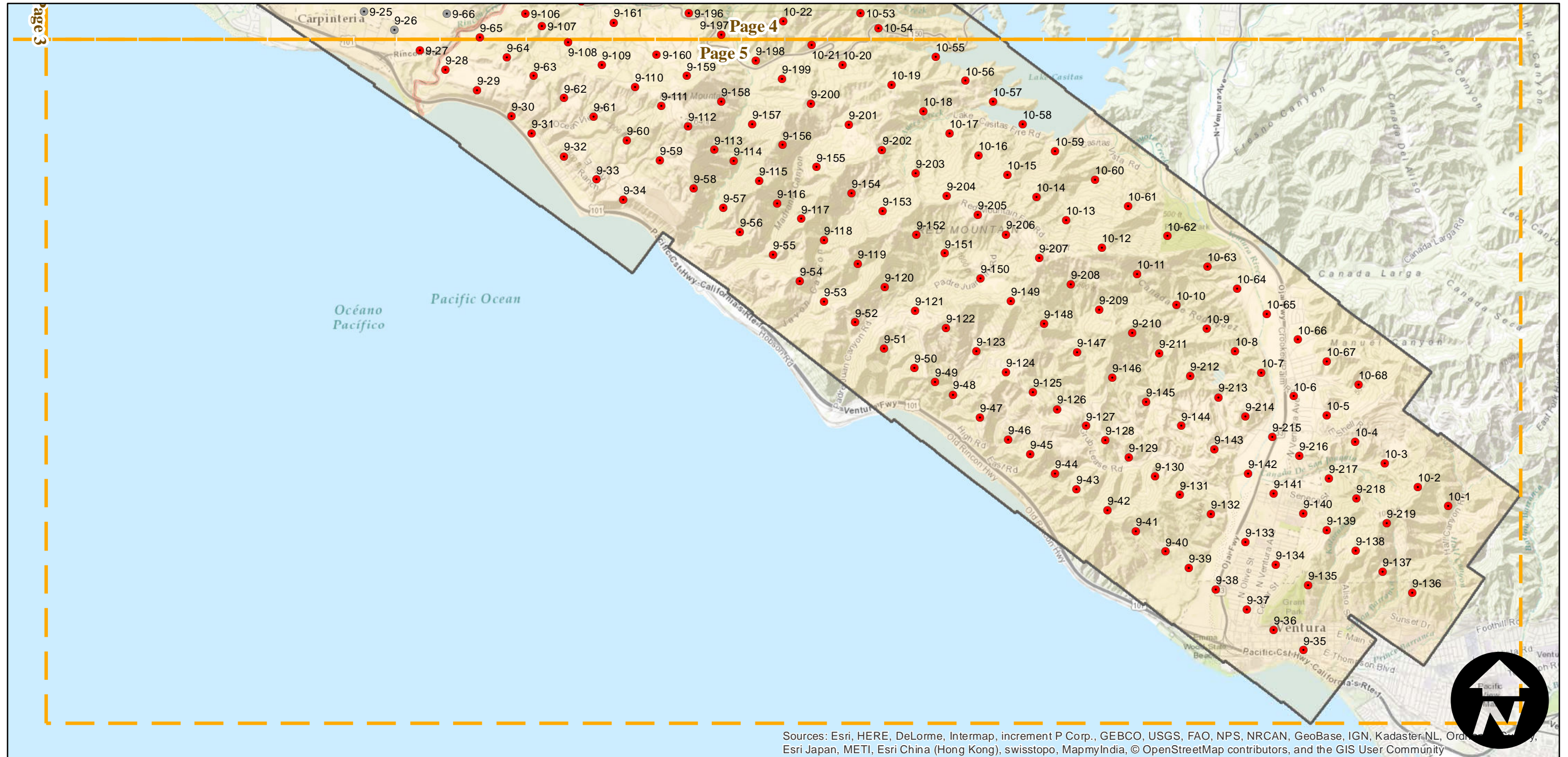
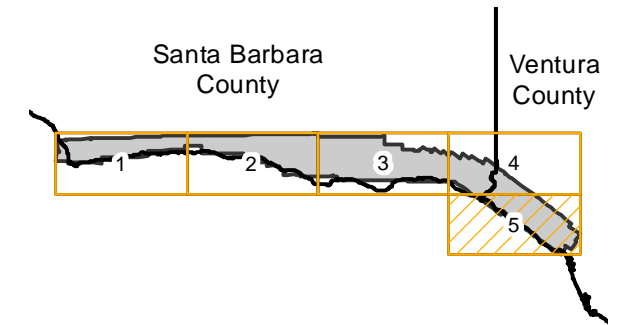
Counties: Santa Barbara, Ventura
Flight date(s): 07-22-1948 to 07-30-1948
Scale: 1:7,200
Overlap: 60%

Complete Metadata:
<http://www.library.ucsb.edu/map-imagery-lab/aerial-photography-information>

Note: Ventura River to Point Conception. MIL does not hold entire flight. Imagery acquired from Teledyne, 1986 and from Whittier College, January 2013.

- MIL owns frame
- MIL does not own frame

FLIGHT LOCATION



Sources: Esri, HERE, DeLorme, Intermap, increment P Corp., GEBCO, USGS, FAO, NPS, NRCAN, GeoBase, IGN, Kadaster NL, Ordnance Survey, Esri Japan, METI, Esri China (Hong Kong), swisstopo, MapmyIndia, © OpenStreetMap contributors, and the GIS User Community

0 1 2 4 Miles