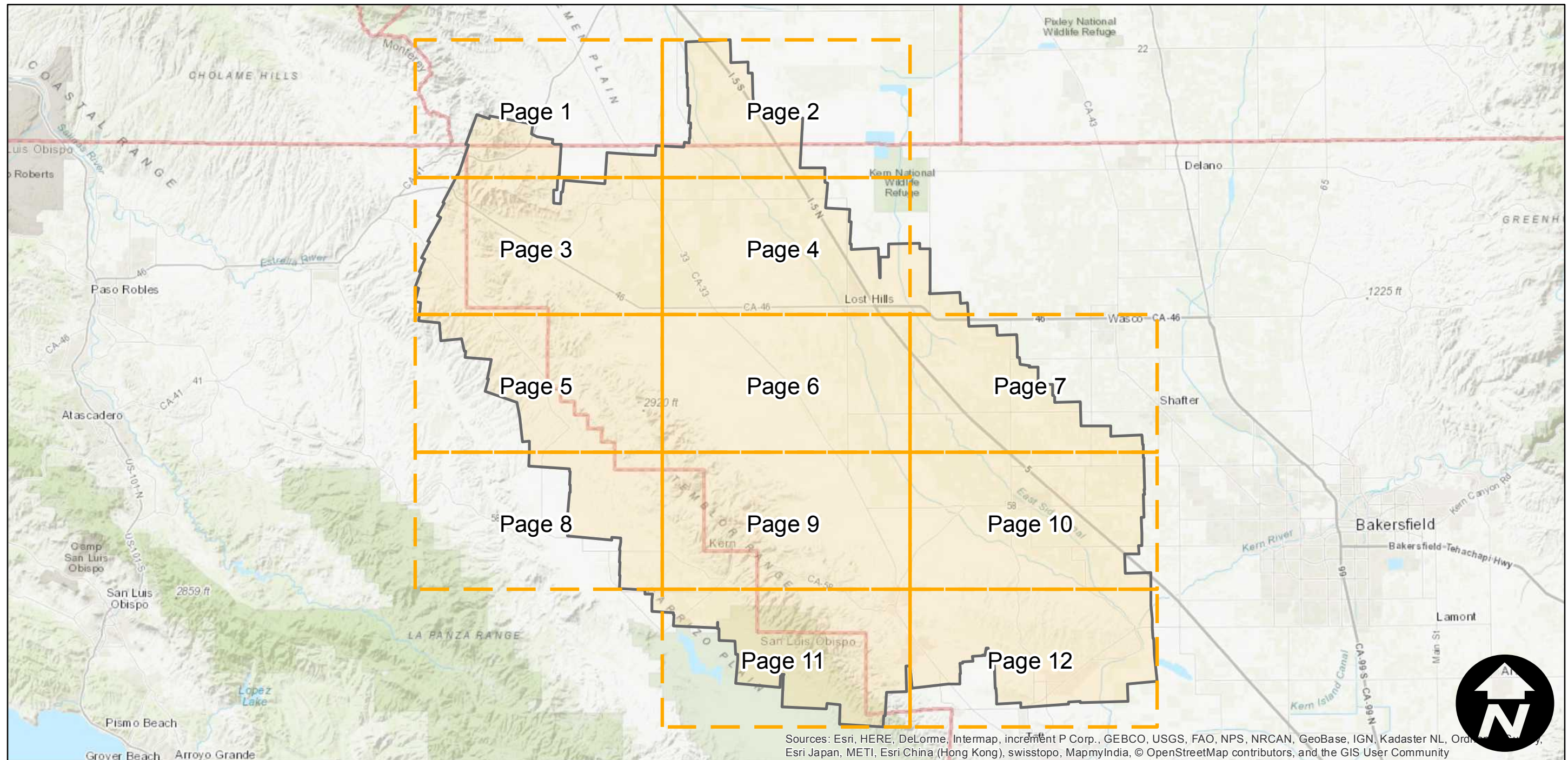
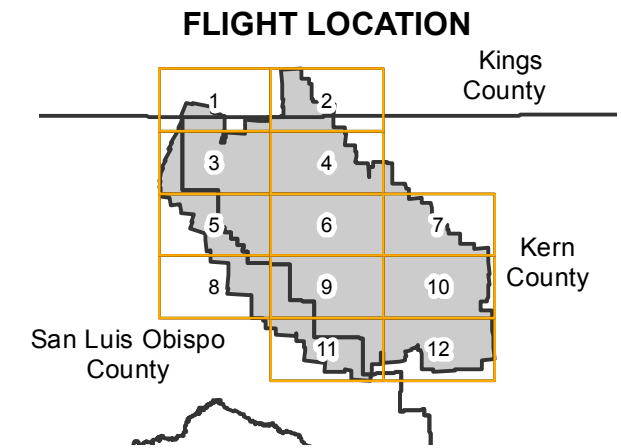


C-1260

Counties: Kern, San Luis Obispo, Kings
Flight date(s): 12-01-1930 to 12-31-1930
Scale: 1:24,000
Overlap: 60%

Note: Vicinity of San Luis Obispo County-Kern County border: Temblor Range and Bacon Hills, Northeast of Simmler. Copy negatives acquired from Teledyne, Inc., 1986. Prints and nitrate negatives acquired from Whittier College, January 2013. Nitrate negatives scanned April 2015.

Complete Metadata:
<http://www.library.ucsb.edu/map-imagery-lab/aerial-photography-information>



Sources: Esri, HERE, DeLorme, Intermap, increment P Corp., GEBCO, USGS, FAO, NPS, NRCAN, GeoBase, IGN, Kadaster NL, Ordnance Survey, Esri Japan, METI, Esri China (Hong Kong), swisstopo, MapmyIndia, © OpenStreetMap contributors, and the GIS User Community

0 5 10 20 Miles

Index to Aerial Photography
Page Key

Scale of this index: 1:490,000

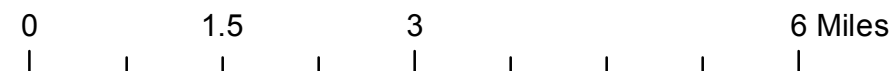
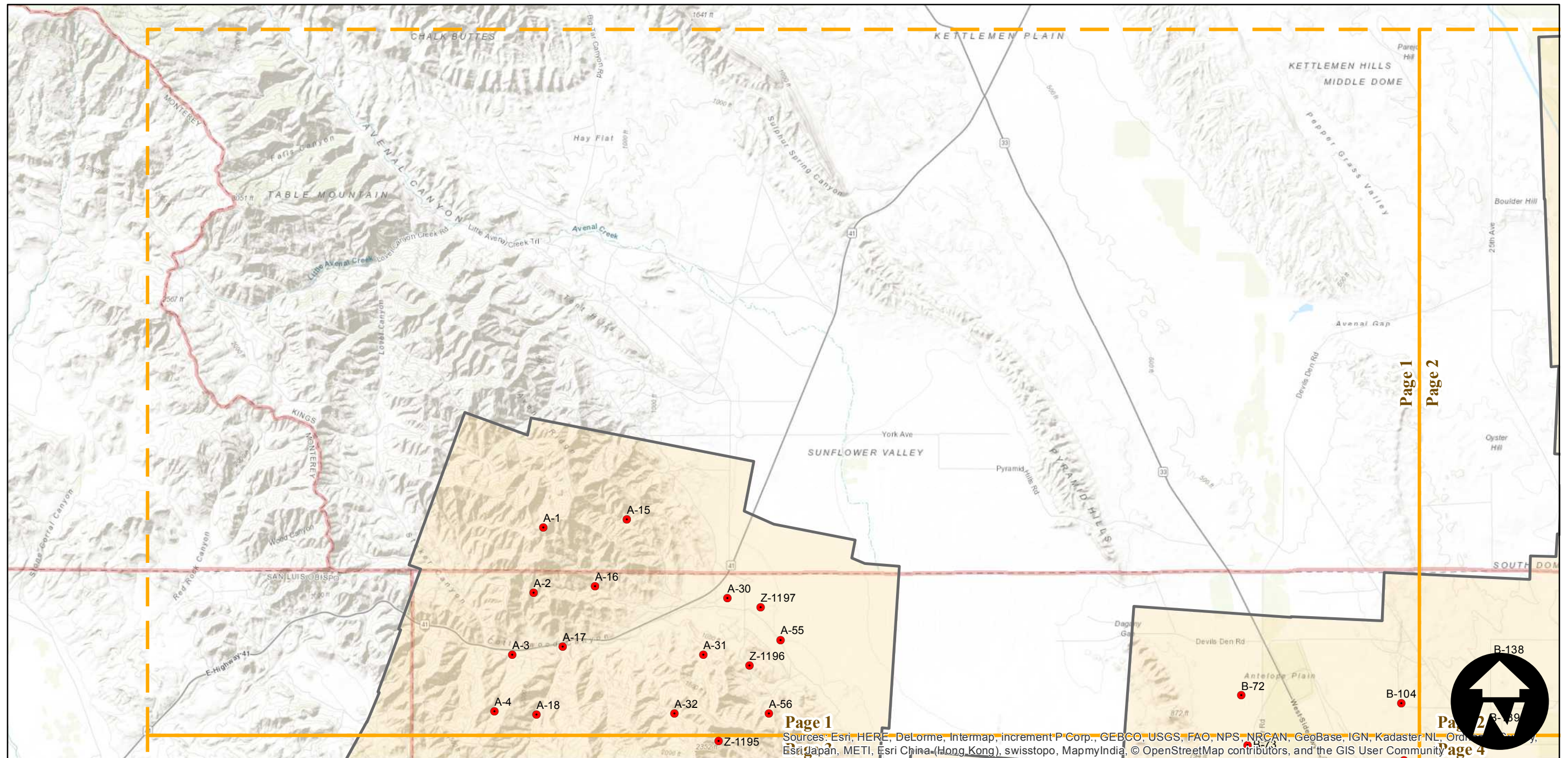
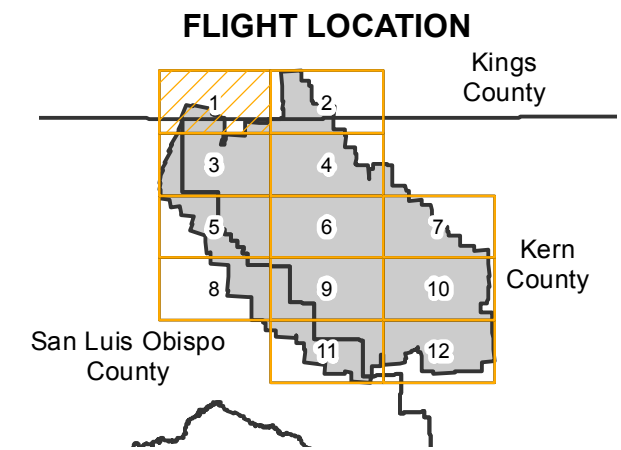
C-1260

Counties: Kern, San Luis Obispo, Kings
 Flight date(s): 12-01-1930 to 12-31-1930
 Scale: 1:24,000
 Overlap: 60%

Complete Metadata:
<http://www.library.ucsb.edu/map-imagery-lab/aerial-photography-information>

Note: Vicinity of San Luis Obispo County-Kern County border: Temblor Range and Bacon Hills, Northeast of Simmler. Copy negatives acquired from Teledyne, Inc., 1986. Prints and nitrate negatives acquired from Whittier College, January 2013. Nitrate negatives scanned April 2015.

- MIL owns frame
- MIL does not own frame



Sources: Esri, HERE, DeLorme, Intermap, increment P Corp., GEBCO, USGS, FAO, NPS, NRCAN, GeoBase, IGN, Kadaster NL, Ordnance Survey, Esri Japan, METI, Esri China (Hong Kong), swisstopo, MapmyIndia, © OpenStreetMap contributors, and the GIS User Community

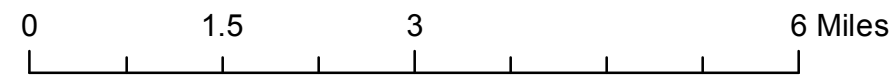
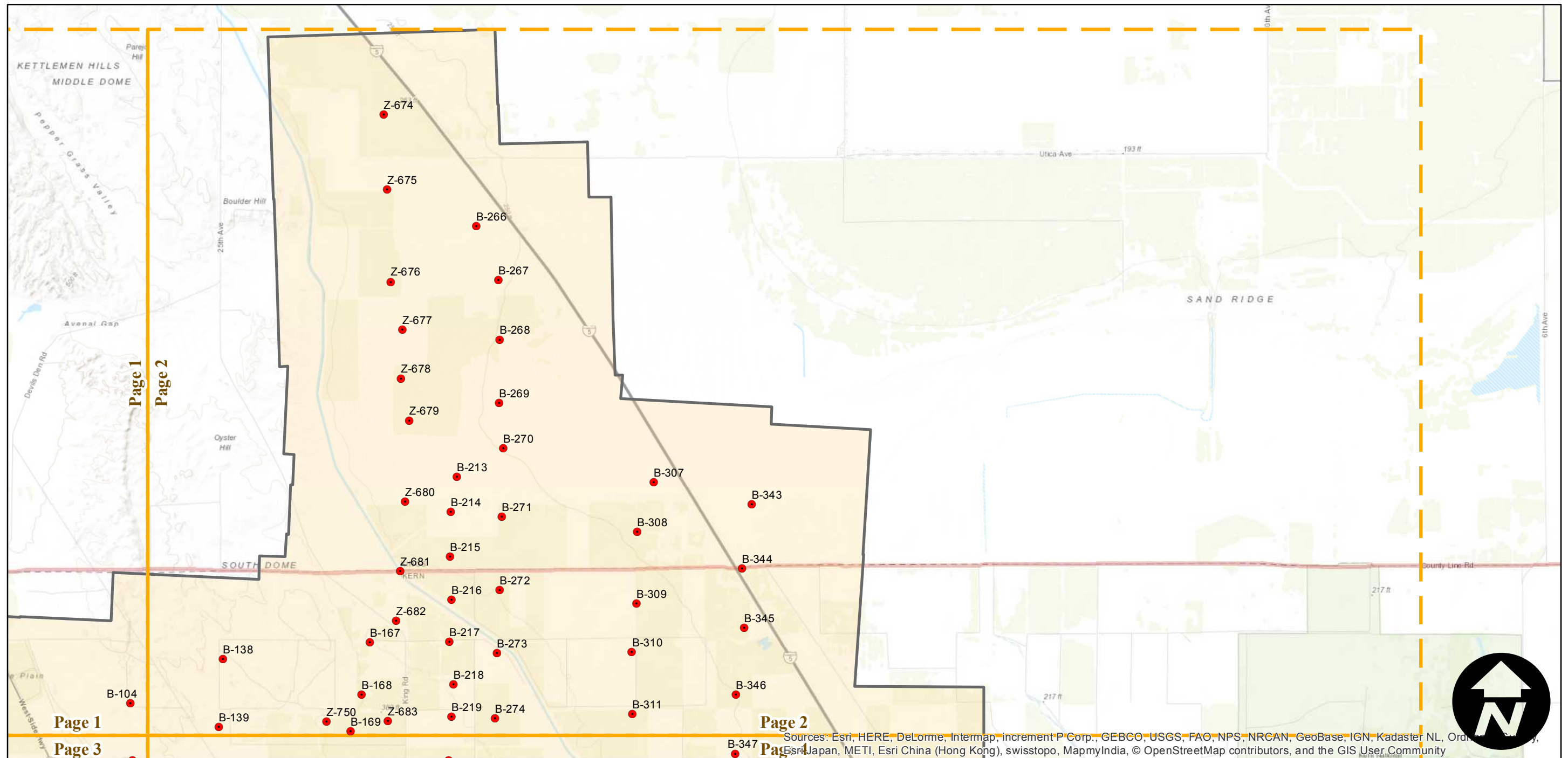
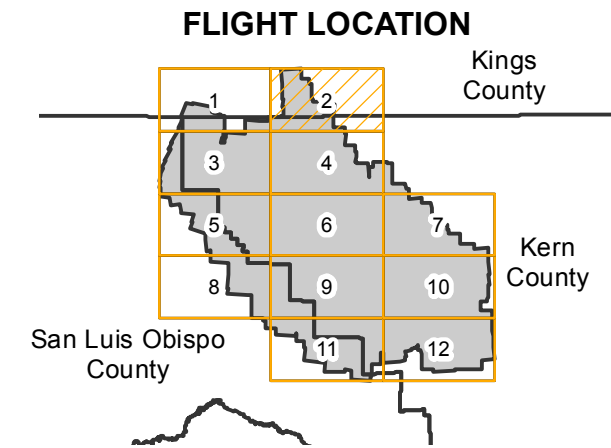
C-1260

Counties: Kern, San Luis Obispo, Kings
 Flight date(s): 12-01-1930 to 12-31-1930
 Scale: 1:24,000
 Overlap: 60%

Complete Metadata:
<http://www.library.ucsb.edu/map-imagery-lab/aerial-photography-information>

Note: Vicinity of San Luis Obispo County-Kern County border: Temblor Range and Bacon Hills, Northeast of Simmler. Copy negatives acquired from Teledyne, Inc., 1986. Prints and nitrate negatives acquired from Whittier College, January 2013. Nitrate negatives scanned April 2015.

- MIL owns frame
- MIL does not own frame



Sources: Esri, HERE, DeLorme, Intermap, increment P Corp., GEBCO, USGS, FAO, NPS, NRCAN, GeoBase, IGN, Kadaster NL, Ordnance Survey, Esri Japan, METI, Esri China (Hong Kong), swisstopo, MapmyIndia, © OpenStreetMap contributors, and the GIS User Community

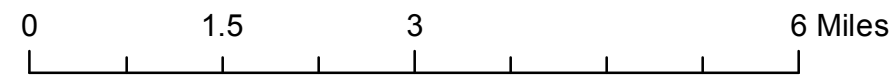
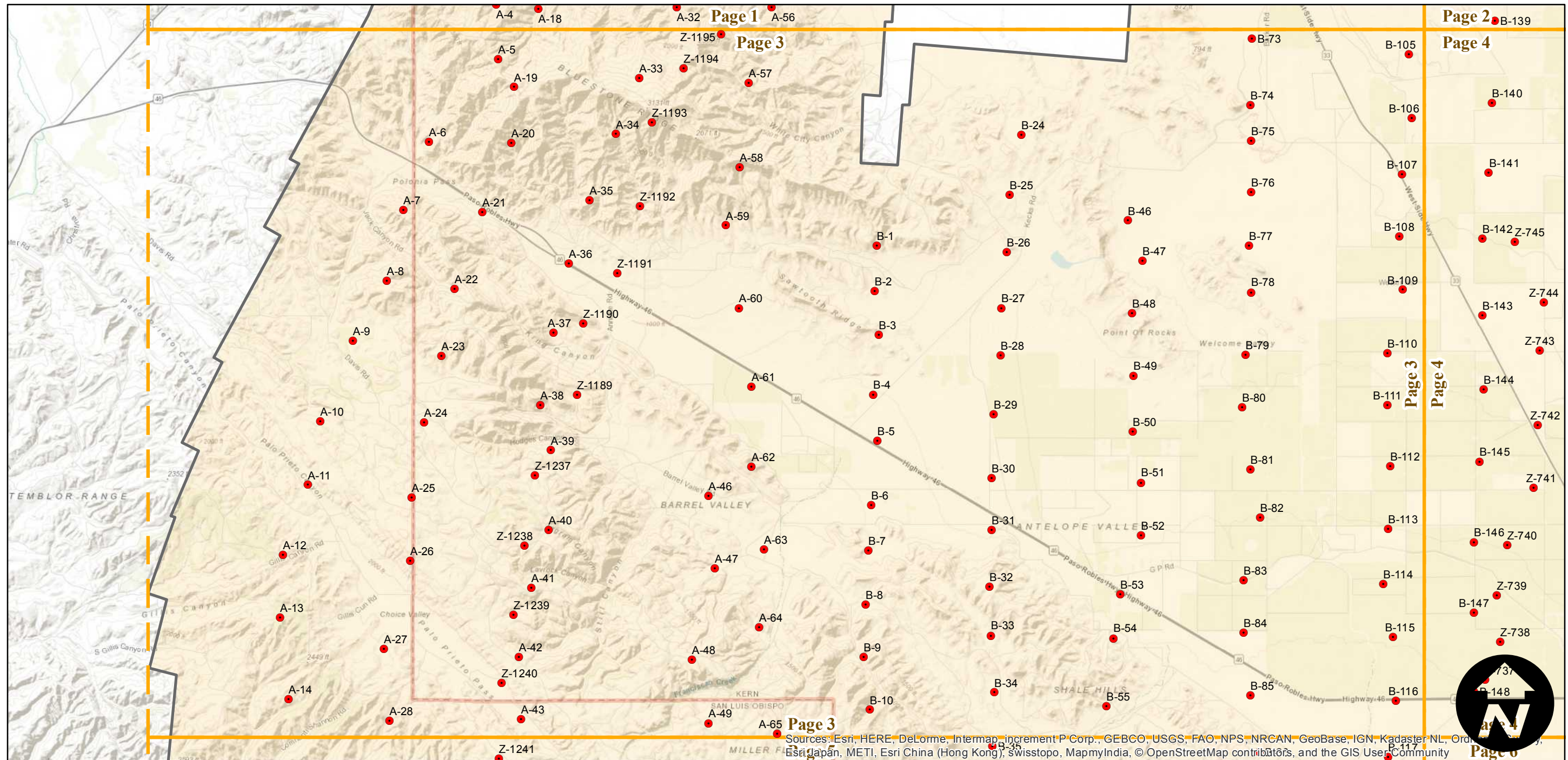
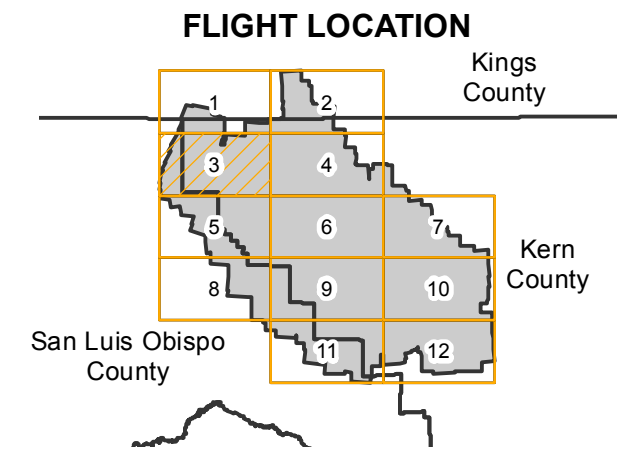
C-1260

Counties: Kern, San Luis Obispo, Kings
 Flight date(s): 12-01-1930 to 12-31-1930
 Scale: 1:24,000
 Overlap: 60%

Complete Metadata:
<http://www.library.ucsb.edu/map-imagery-lab/aerial-photography-information>

Note: Vicinity of San Luis Obispo County-Kern County border: Temblor Range and Bacon Hills, Northeast of Simmler. Copy negatives acquired from Teledyne, Inc., 1986. Prints and nitrate negatives acquired from Whittier College, January 2013. Nitrate negatives scanned April 2015.

- MIL owns frame
- MIL does not own frame



Sources: Esri, HERE, DeLorme, Intermap, increment P Corp., GEBCO, USGS, FAO, NPS, NRCAN, GeoBase, IGN, Kadaster NL, Ordnance Survey, Esri Japan, METI, Esri China (Hong Kong), Swisstopo, MapmyIndia, © OpenStreetMap contributors, and the GIS User Community

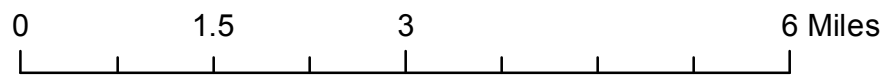
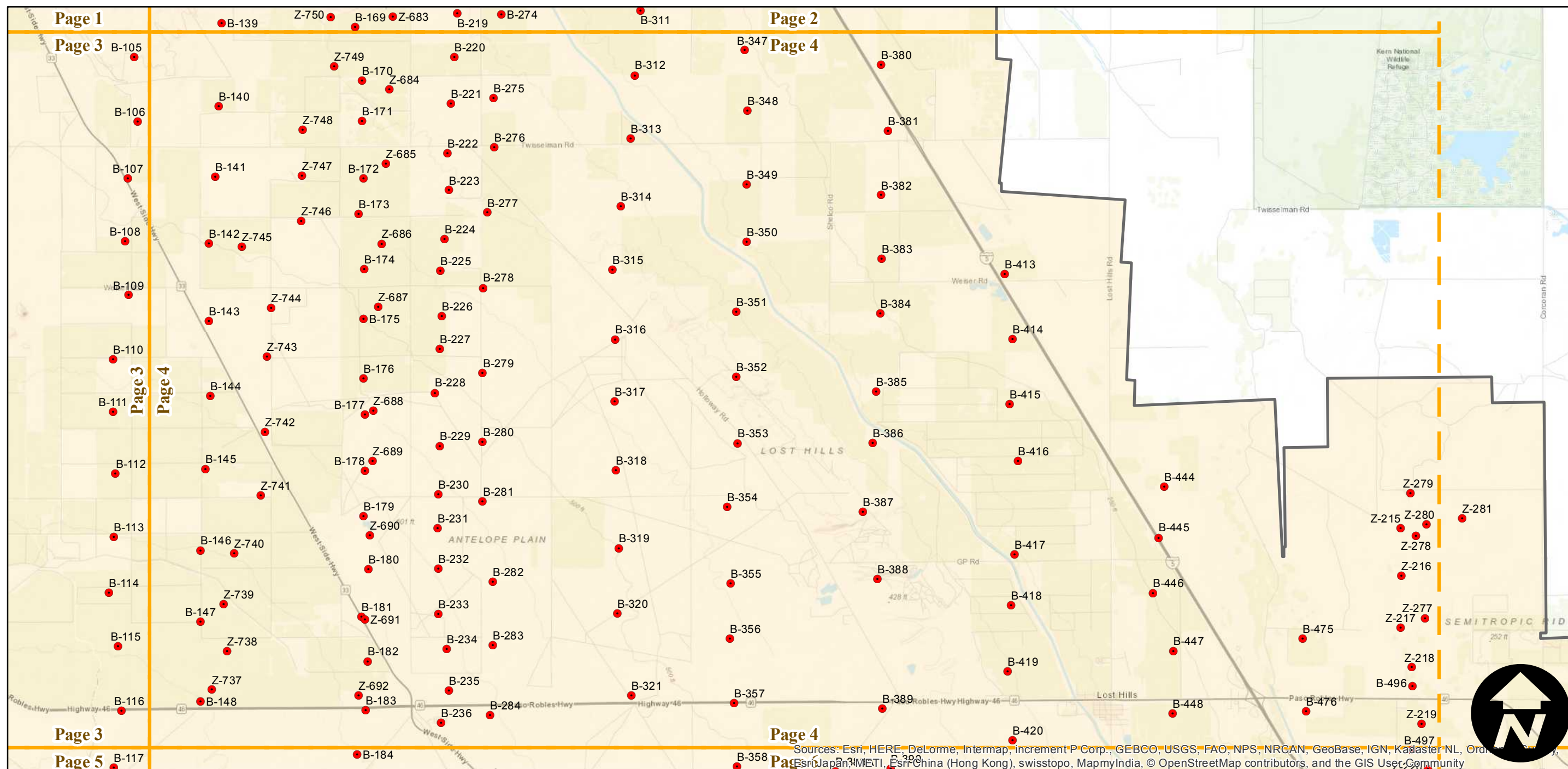
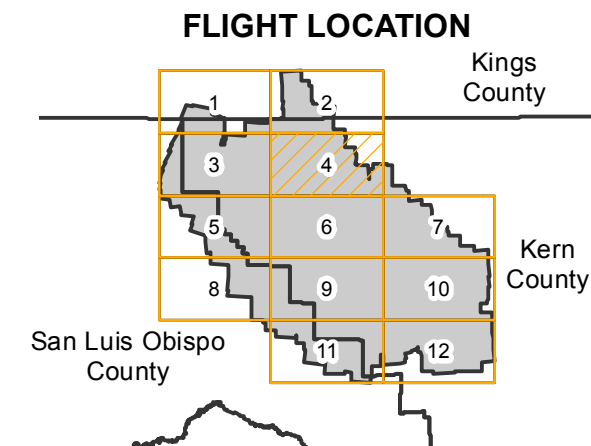
C-1260

Counties: Kern, San Luis Obispo, Kings
 Flight date(s): 12-01-1930 to 12-31-1930
 Scale: 1:24,000
 Overlap: 60%

Complete Metadata:
<http://www.library.ucsb.edu/map-imagery-lab/aerial-photography-information>

Note: Vicinity of San Luis Obispo County-Kern County border: Temblor Range and Bacon Hills, Northeast of Simmler. Copy negatives acquired from Teledyne, Inc., 1986. Prints and nitrate negatives acquired from Whittier College, January 2013. Nitrate negatives scanned April 2015.

- MIL owns frame
- MIL does not own frame



Sources: Esri, HERE, DeLorme, Intermap, increment P Corp., GEBCO, USGS, FAO, NPS, NRCAN, GeoBase, IGN, Kadaster NL, Ordnance Survey, Esri Japan, METI, Esri China (Hong Kong), swisstopo, MapmyIndia, © OpenStreetMap contributors, and the GIS User Community

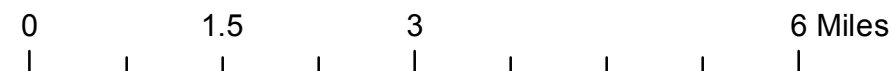
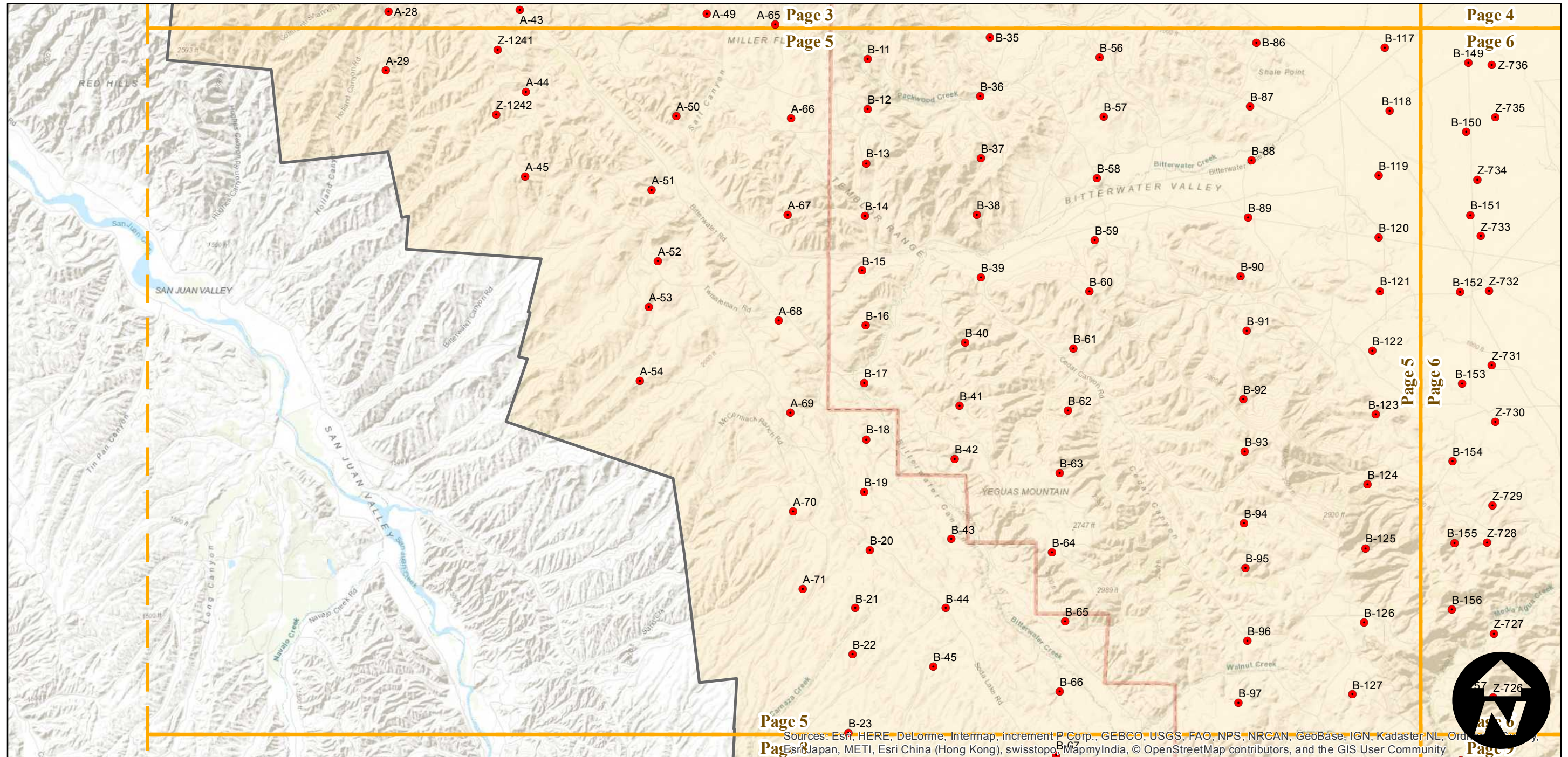
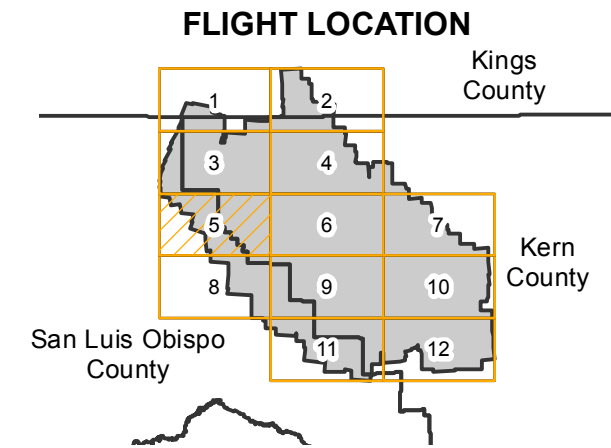
C-1260

Counties: Kern, San Luis Obispo, Kings
 Flight date(s): 12-01-1930 to 12-31-1930
 Scale: 1:24,000
 Overlap: 60%

Complete Metadata:
<http://www.library.ucsb.edu/map-imagery-lab/aerial-photography-information>

Note: Vicinity of San Luis Obispo County-Kern County border: Temblor Range and Bacon Hills, Northeast of Simmler. Copy negatives acquired from Teledyne, Inc., 1986. Prints and nitrate negatives acquired from Whittier College, January 2013. Nitrate negatives scanned April 2015.

- MIL owns frame
- MIL does not own frame



Sources: Esri, HERE, DeLorme, Intermap, increment P Corp., GEBCO, USGS, FAO, NPS, NRCAN, GeoBase, IGN, Kadaster NL, Ordnance Survey, Esri Japan, METI, Esri China (Hong Kong), swisstopo, MapmyIndia, © OpenStreetMap contributors, and the GIS User Community

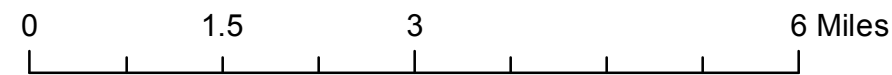
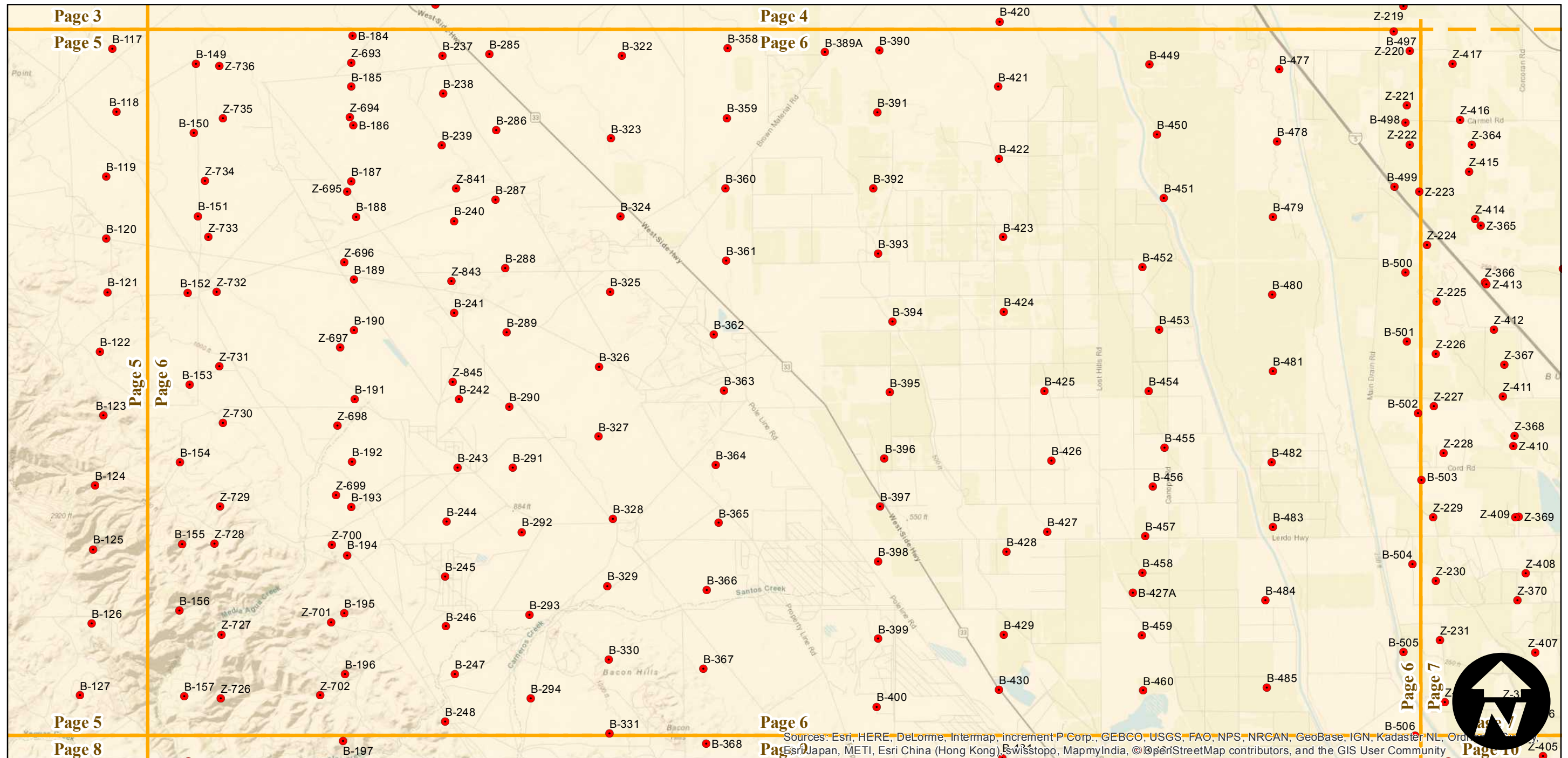
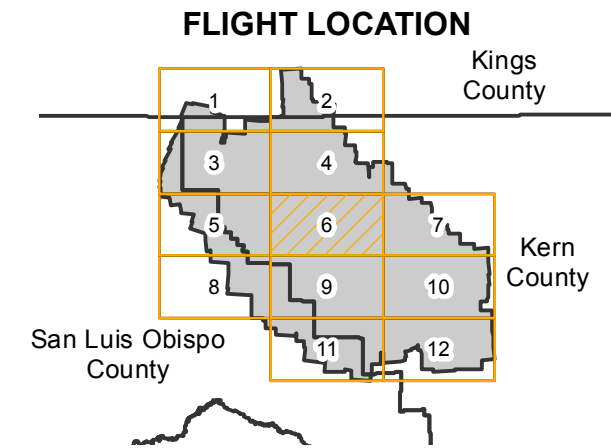
C-1260

Counties: Kern, San Luis Obispo, Kings
 Flight date(s): 12-01-1930 to 12-31-1930
 Scale: 1:24,000
 Overlap: 60%

Complete Metadata:
<http://www.library.ucsb.edu/map-imagery-lab/aerial-photography-information>

Note: Vicinity of San Luis Obispo County-Kern County border: Temblor Range and Bacon Hills, Northeast of Simmler. Copy negatives acquired from Teledyne, Inc., 1986. Prints and nitrate negatives acquired from Whittier College, January 2013. Nitrate negatives scanned April 2015.

- MIL owns frame
- MIL does not own frame



Sources: Esri, HERE, DeLorme, Intermap, increment P Corp., GEBCO, USGS, FAO, NPS, NRCAN, GeoBase, IGN, Kadaster NL, Ordnance Survey, Esri Japan, METI, Esri China (Hong Kong), Swisstopo, MapmyIndia, © OpenStreetMap contributors, and the GIS User Community

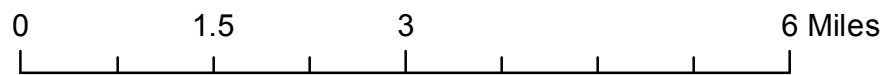
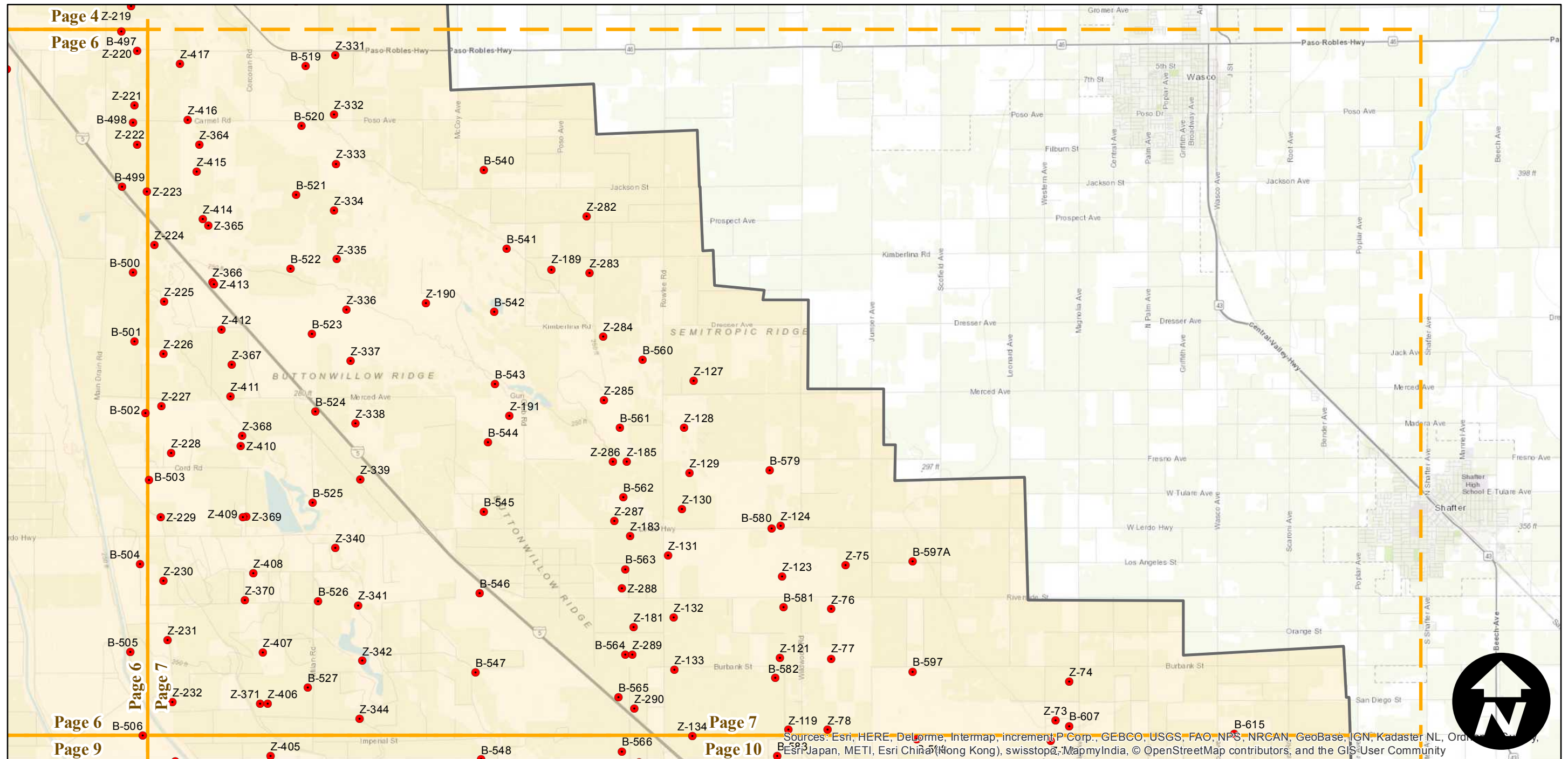
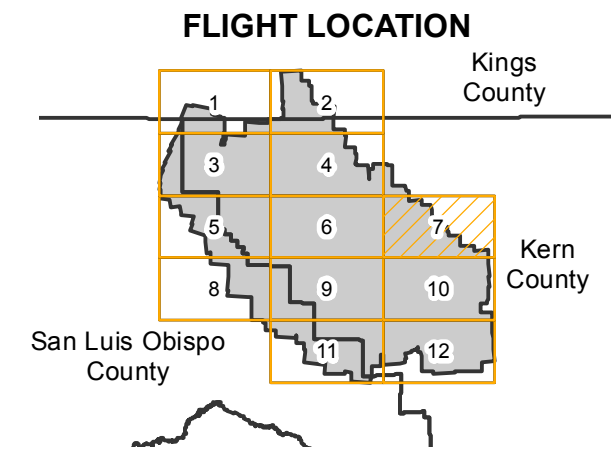
C-1260

Counties: Kern, San Luis Obispo, Kings
 Flight date(s): 12-01-1930 to 12-31-1930
 Scale: 1:24,000
 Overlap: 60%

Note: Vicinity of San Luis Obispo County-Kern County border: Temblor Range and Bacon Hills, Northeast of Simmler. Copy negatives acquired from Teledyne, Inc., 1986. Prints and nitrate negatives acquired from Whittier College, January 2013. Nitrate negatives scanned April 2015.

Complete Metadata:
<http://www.library.ucsb.edu/map-imagery-lab/aerial-photography-information>

- MIL owns frame
- MIL does not own frame



Sources: Esri, HERE, DeLorme, Intermap, increment P Corp., GEBCO, USGS, FAO, NPS, NRCAN, GeoBase, IGN, Kadaster NL, Ordnance Survey, Esri Japan, METI, Esri China (Hong Kong), swisstopo, MapmyIndia, © OpenStreetMap contributors, and the GIS User Community

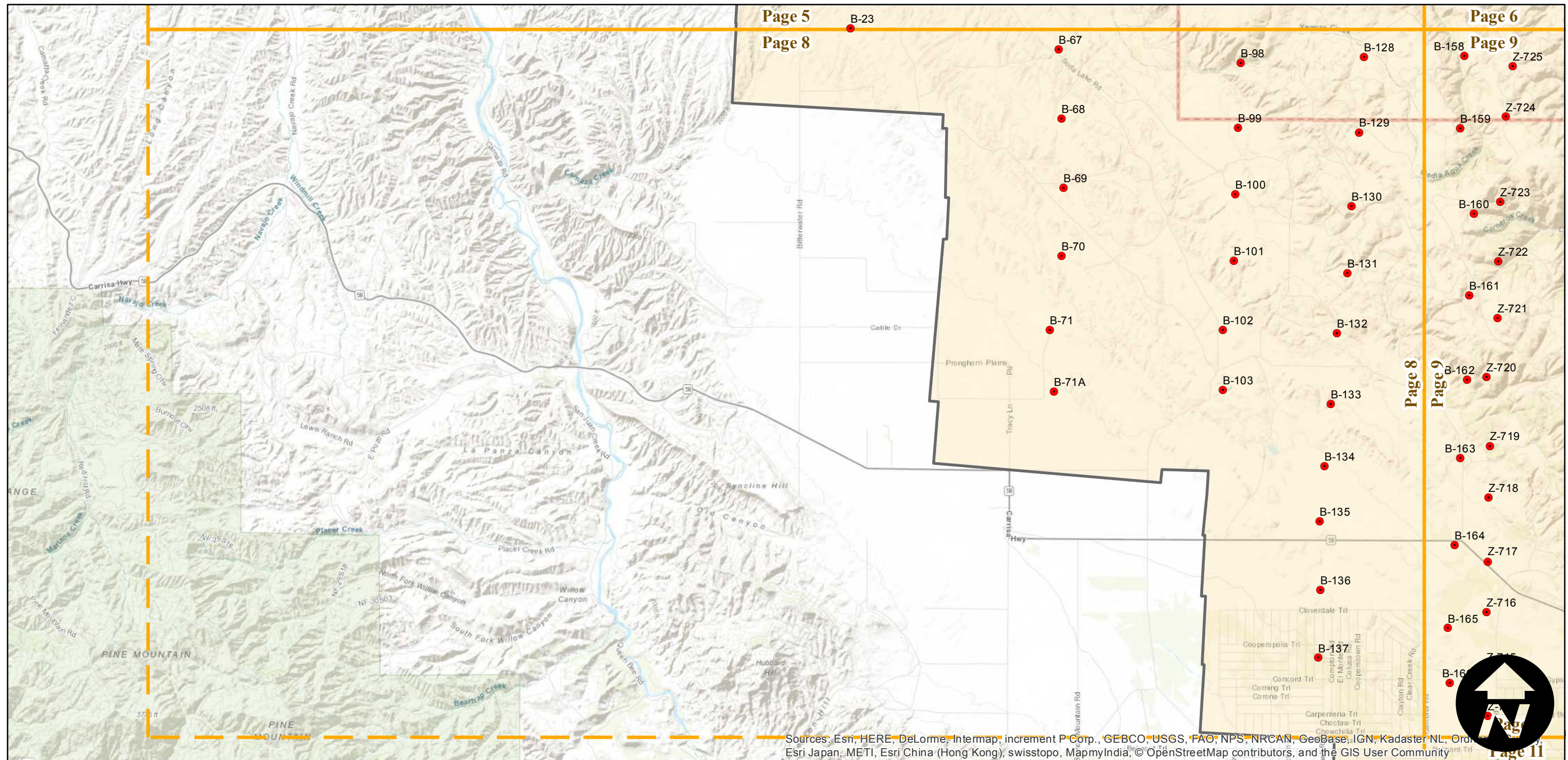
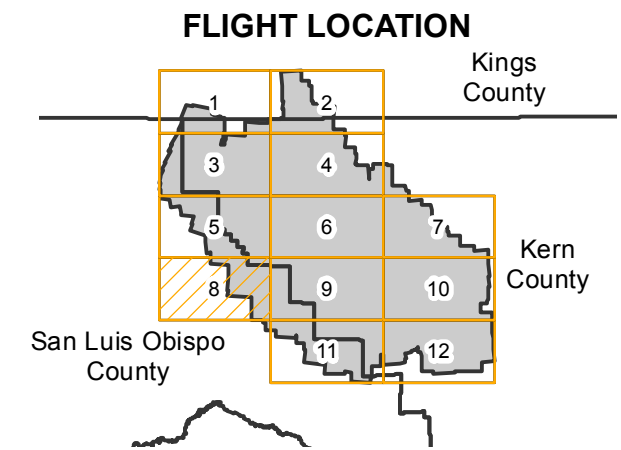
C-1260

Counties: Kern, San Luis Obispo, Kings
 Flight date(s): 12-01-1930 to 12-31-1930
 Scale: 1:24,000
 Overlap: 60%

Complete Metadata:
<http://www.library.ucsb.edu/map-imagery-lab/aerial-photography-information>

Note: Vicinity of San Luis Obispo County-Kern County border: Temblor Range and Bacon Hills, Northeast of Simmler. Copy negatives acquired from Teledyne, Inc., 1986. Prints and nitrate negatives acquired from Whittier College, January 2013. Nitrate negatives scanned April 2015.

- MIL owns frame
- MIL does not own frame

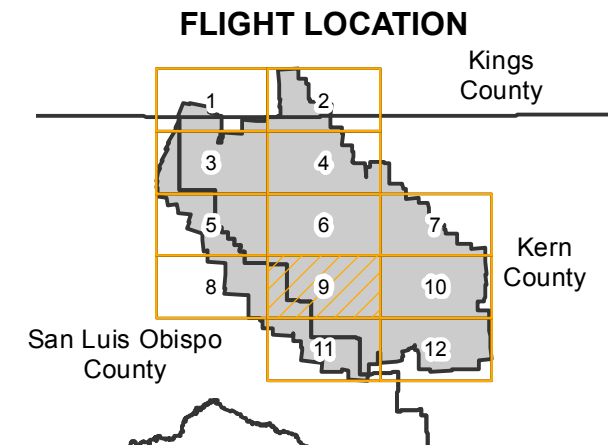


Sources: Esri, HERE, DeLorme, Intermap, increment P Corp., GEBCO, USGS, FAO, NPS, NRCAN, GeoBase, IGN, Kadaster NL, Ordnance Survey, Esri Japan, METI, Esri China (Hong Kong), swisstopo, MapmyIndia, © OpenStreetMap contributors, and the GIS User Community

C-1260

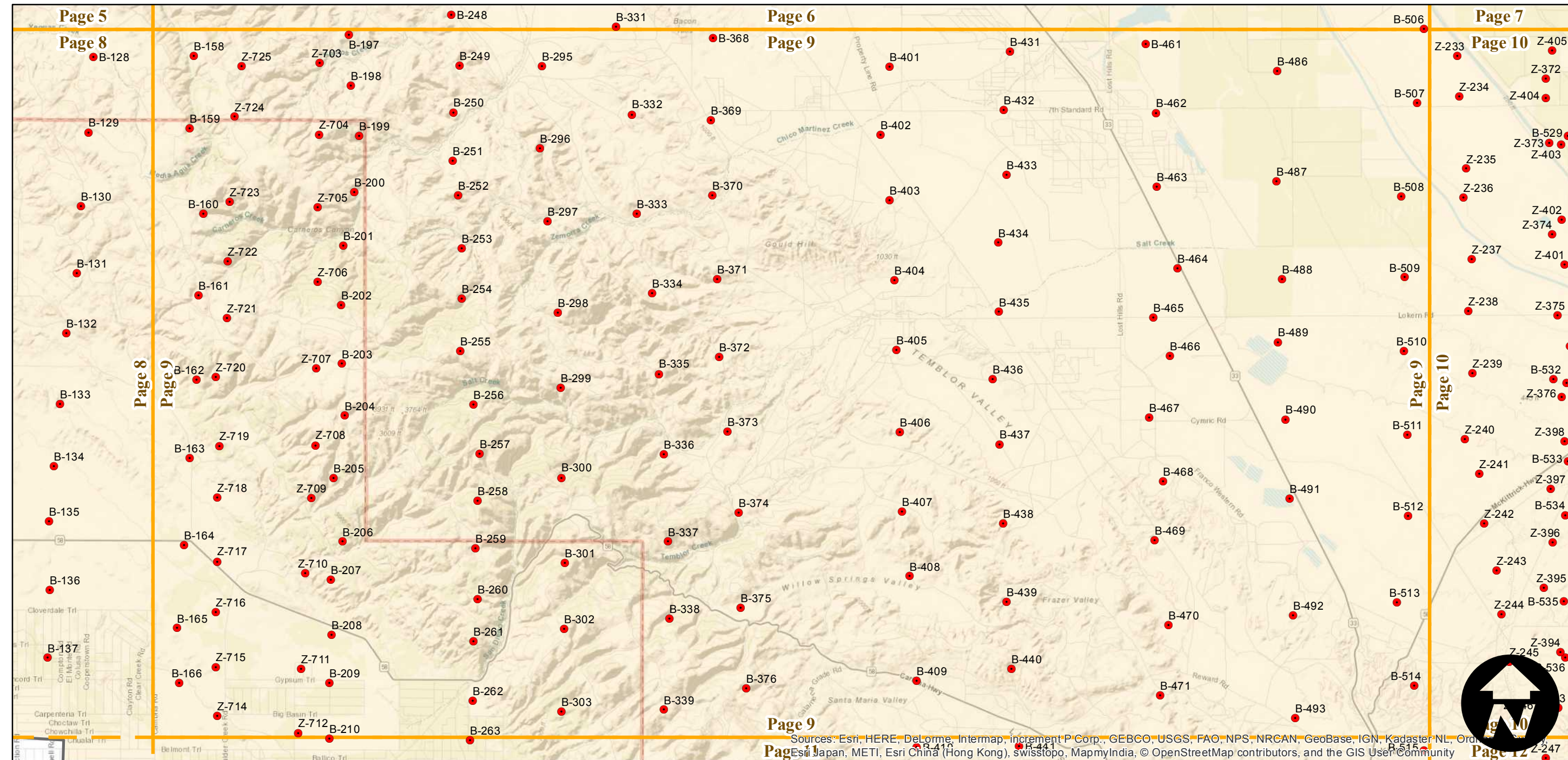
Counties: Kern, San Luis Obispo, Kings
 Flight date(s): 12-01-1930 to 12-31-1930
 Scale: 1:24,000
 Overlap: 60%

Note: Vicinity of San Luis Obispo County-Kern County border: Tumbler Range and Bacon Hills, Northeast of Simmler. Copy negatives acquired from Teledyne, Inc., 1986. Prints and nitrate negatives acquired from Whittier College, January 2013. Nitrate negatives scanned April 2015.

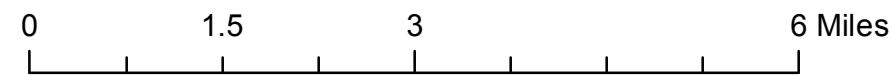


Complete Metadata:
<http://www.library.ucsb.edu/map-imagery-lab/aerial-photography-information>

- MIL owns frame
- MIL does not own frame



Sources: Esri, HERE, DeLorme, Intermap, increment P Corp., GEBCO, USGS, FAO, NPS, NRCAN, GeoBase, IGN, Kadaster NL, Ordnance Survey, Esri Japan, METI, Esri China (Hong Kong), swisstopo, MapmyIndia, © OpenStreetMap contributors, and the GIS User Community



Index to Aerial Photography
 Page 9 of 12

Scale of this index: 1:95,000

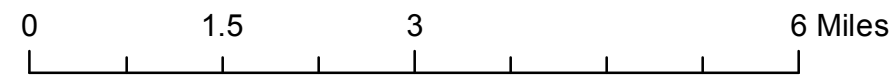
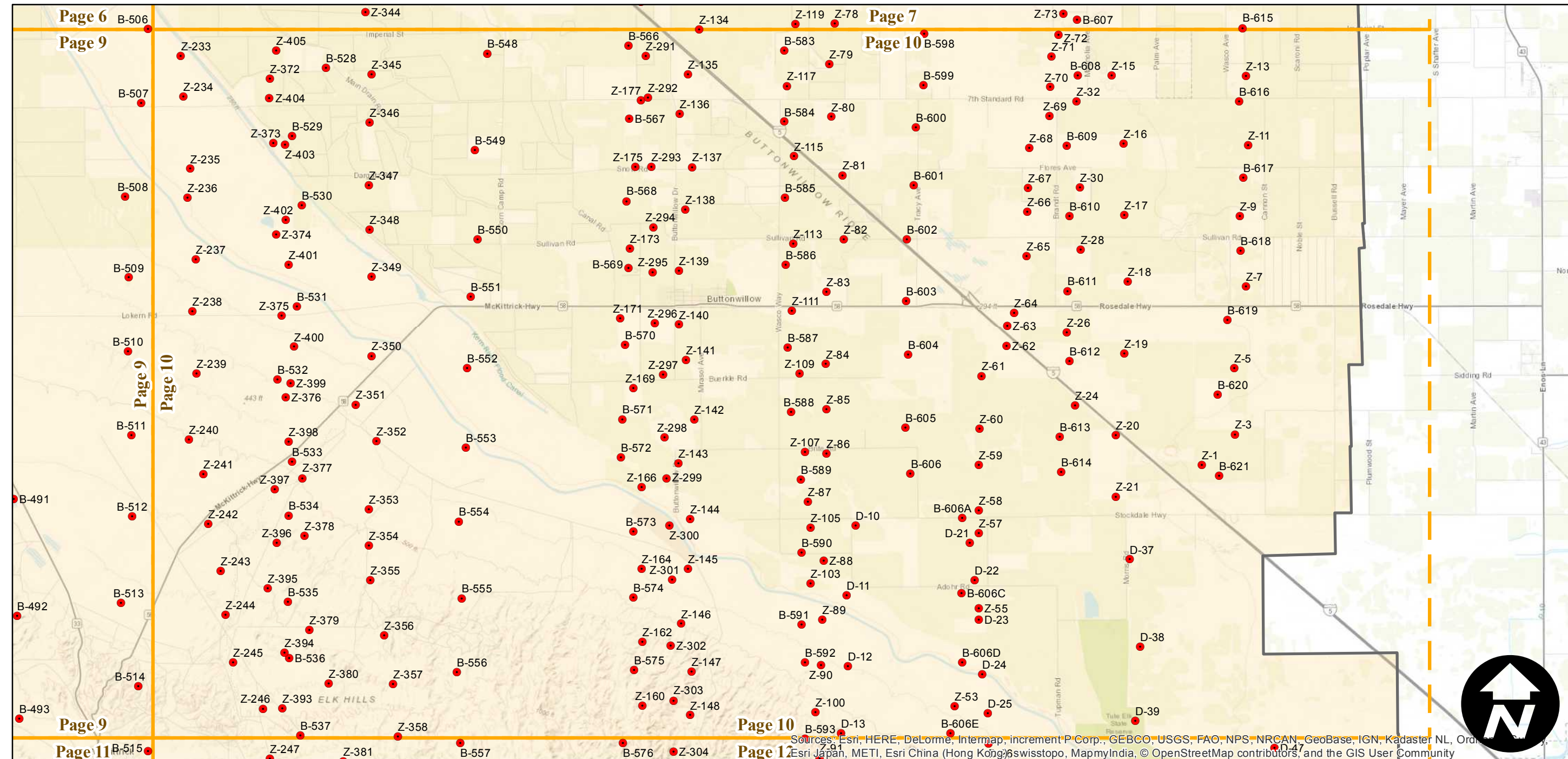
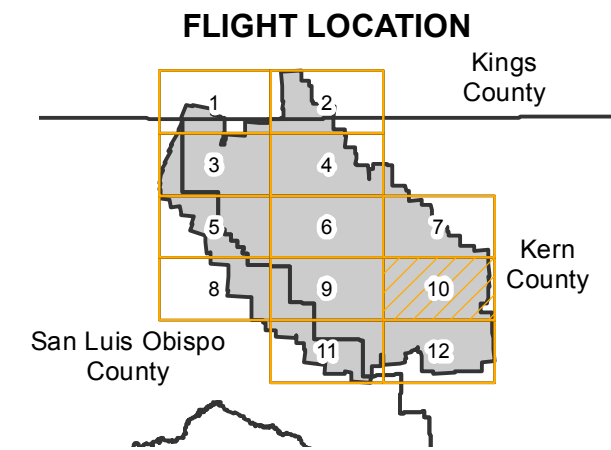
C-1260

Counties: Kern, San Luis Obispo, Kings
 Flight date(s): 12-01-1930 to 12-31-1930
 Scale: 1:24,000
 Overlap: 60%

Complete Metadata:
<http://www.library.ucsb.edu/map-imagery-lab/aerial-photography-information>

Note: Vicinity of San Luis Obispo County-Kern County border: Temblor Range and Bacon Hills, Northeast of Simmler. Copy negatives acquired from Teledyne, Inc., 1986. Prints and nitrate negatives acquired from Whittier College, January 2013. Nitrate negatives scanned April 2015.

- MIL owns frame
- MIL does not own frame



Sources: Esri, HERE, DeLorme, Intermap, increment P Corp., GEBCO, USGS, FAO, NPS, NRCAN, GeoBase, IGN, Kadaster NL, Ordnance Survey, Esri Japan, METI, Esri China (Hong Kong), Swisstopo, MapmyIndia, © OpenStreetMap contributors, and the GIS User Community

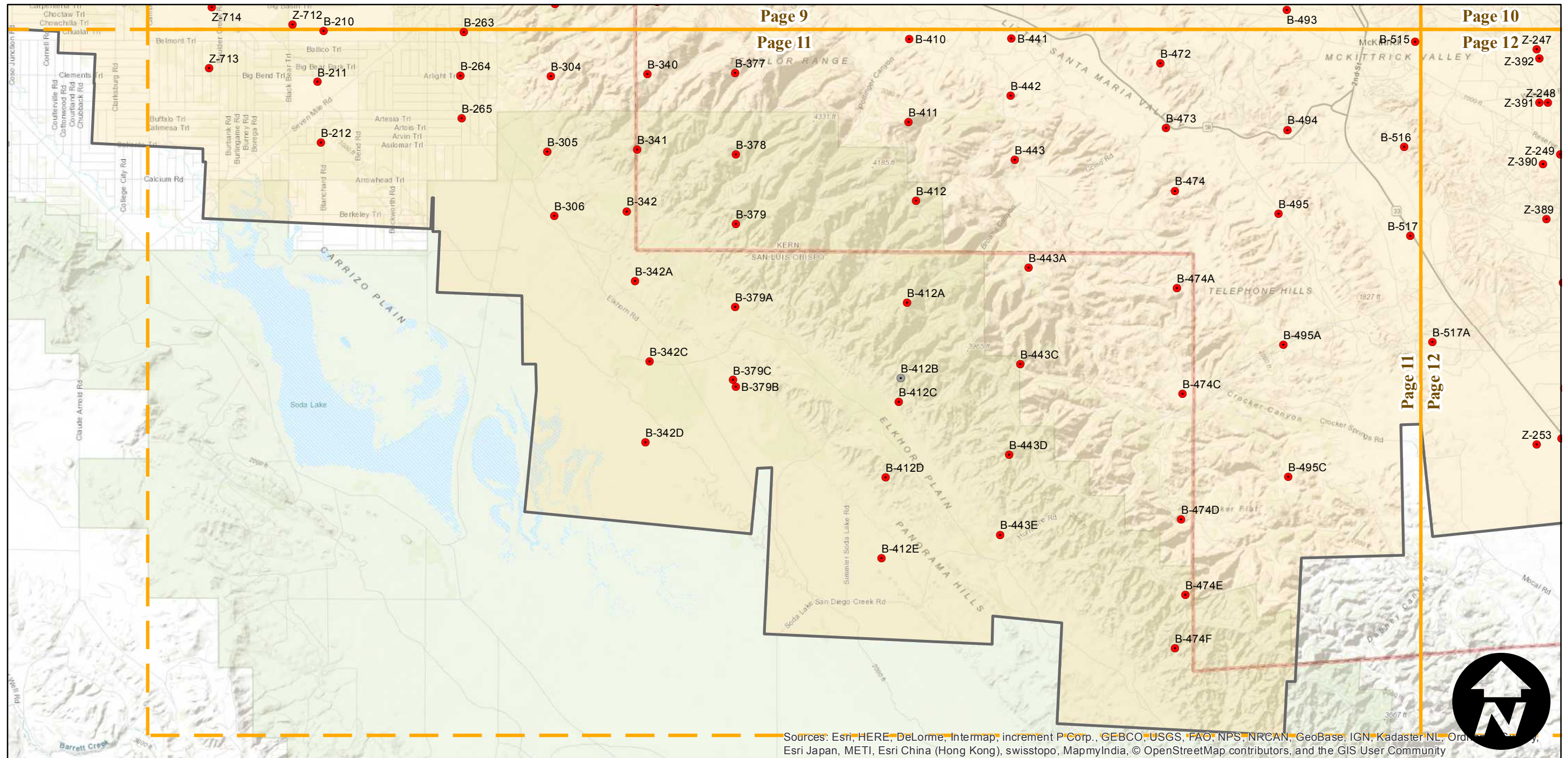
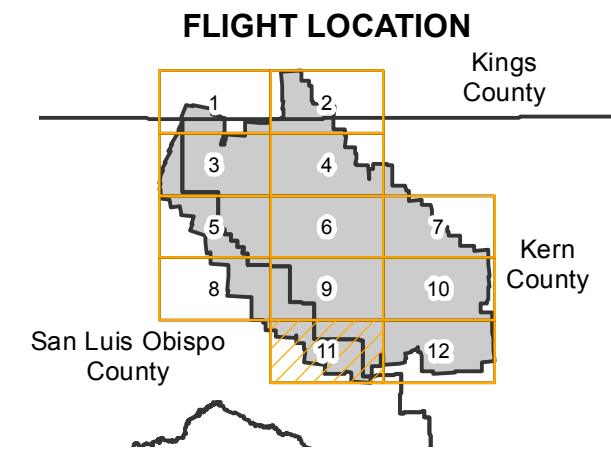
C-1260

Counties: Kern, San Luis Obispo, Kings
 Flight date(s): 12-01-1930 to 12-31-1930
 Scale: 1:24,000
 Overlap: 60%

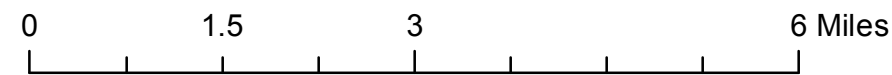
Complete Metadata:
<http://www.library.ucsb.edu/map-imagery-lab/aerial-photography-information>

Note: Vicinity of San Luis Obispo County-Kern County border: Temblor Range and Bacon Hills, Northeast of Simmler. Copy negatives acquired from Teledyne, Inc., 1986. Prints and nitrate negatives acquired from Whittier College, January 2013. Nitrate negatives scanned April 2015.

- MIL owns frame
- MIL does not own frame



Sources: Esri, HERE, DeLorme, Intermap, increment P Corp., GEBCO, USGS, FAO, NPS, NRCAN, GeoBase, IGN, Kadaster NL, Ordnance Survey, Esri Japan, METI, Esri China (Hong Kong), swisstopo, MapmyIndia, © OpenStreetMap contributors, and the GIS User Community



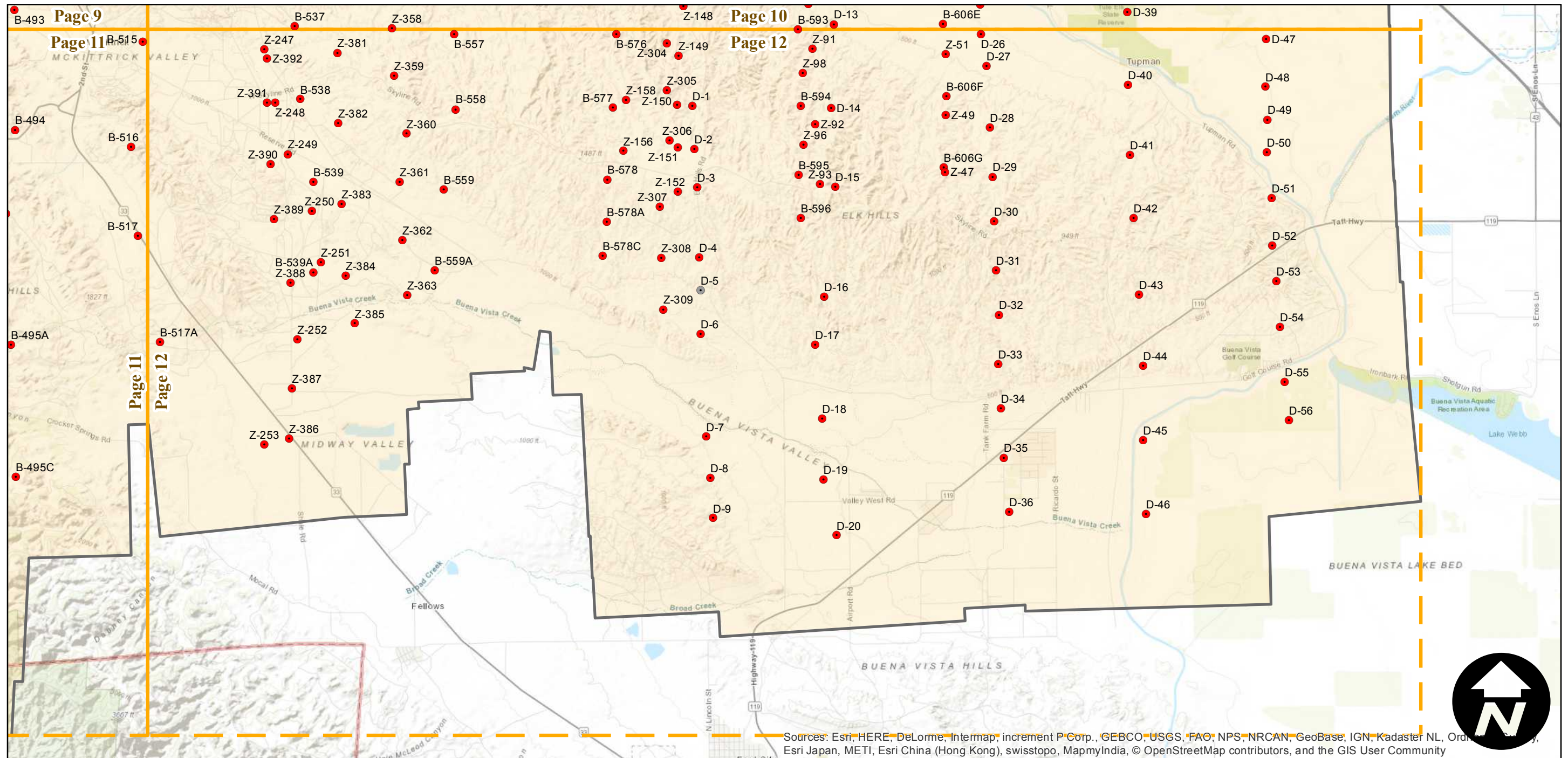
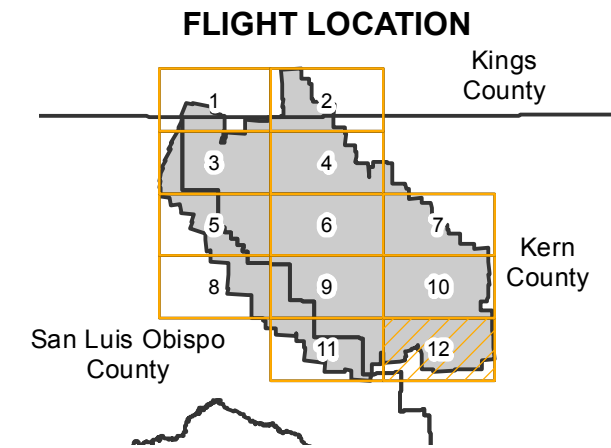
C-1260

Counties: Kern, San Luis Obispo, Kings
 Flight date(s): 12-01-1930 to 12-31-1930
 Scale: 1:24,000
 Overlap: 60%

Complete Metadata:
<http://www.library.ucsb.edu/map-imagery-lab/aerial-photography-information>

Note: Vicinity of San Luis Obispo County-Kern County border: Temblor Range and Bacon Hills, Northeast of Simmler. Copy negatives acquired from Teledyne, Inc., 1986. Prints and nitrate negatives acquired from Whittier College, January 2013. Nitrate negatives scanned April 2015.

- MIL owns frame
- MIL does not own frame



Sources: Esri, HERE, DeLorme, Intermap, increment P Corp., GEBCO, USGS, FAO, NPS, NRCAN, GeoBase, IGN, Kadaster NL, Ordnance Survey, Esri Japan, METI, Esri China (Hong Kong), swisstopo, MapmyIndia, © OpenStreetMap contributors, and the GIS User Community

