

C-1247A

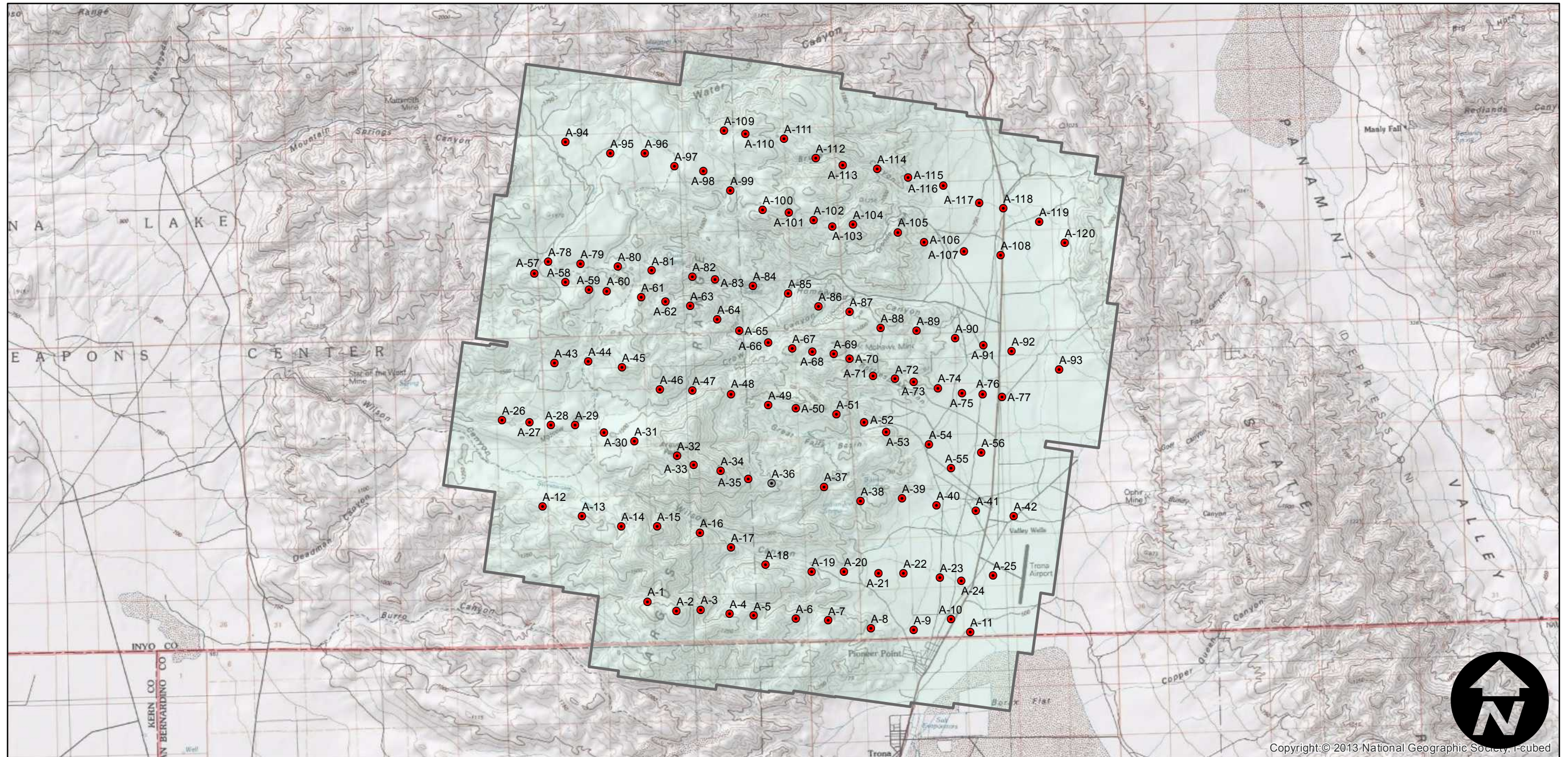
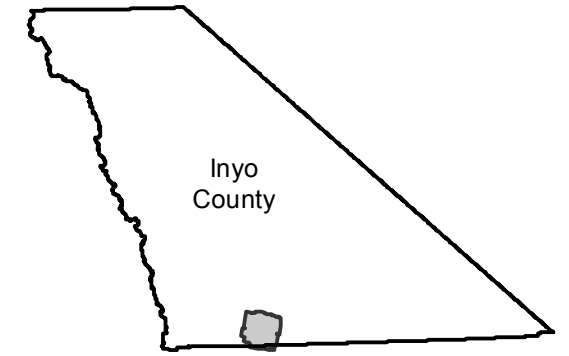
Counties: Inyo
Flight date(s): 11-12-1930
Scale: 1:18,000
Overlap: 60%

Complete Metadata:
<http://www.library.ucsb.edu/mil/aerial-photography-tools>

Note: Vicinity of Homewood Canyon-Valley Wells, southern Argus Range. Imagery acquired from Whittier College, January 2013.

- MIL owns frame
- MIL does not own frame

FLIGHT LOCATION



0 2 4 8 Miles

Copyright © 2013 National Geographic Society, i-cubed