

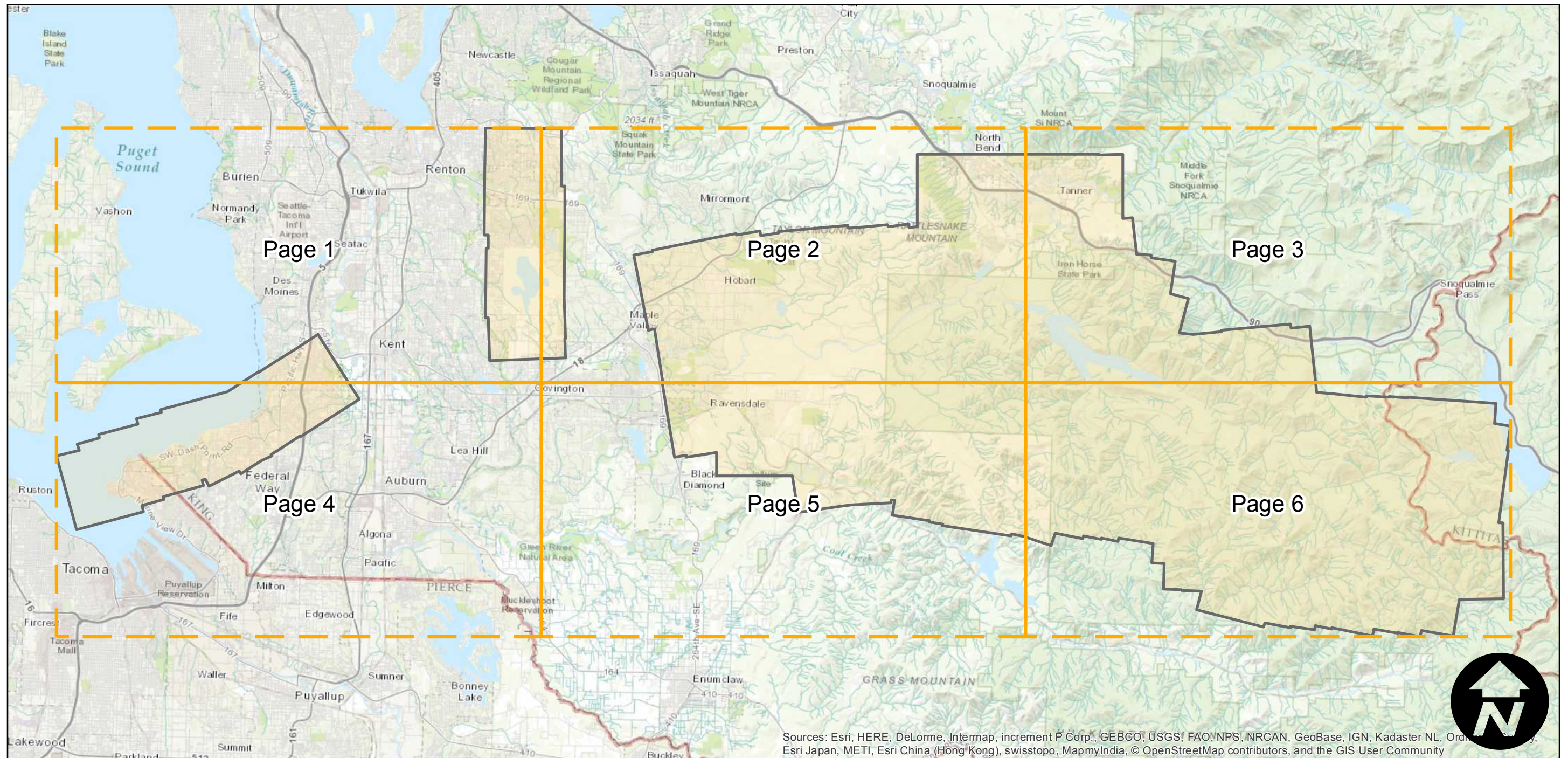
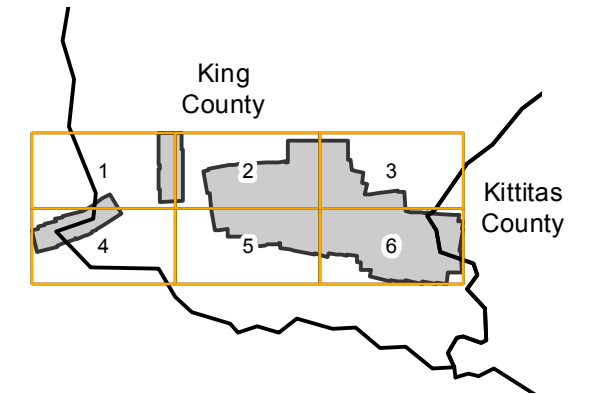
C-1181

Counties: King, Kittitas
Flight date(s): 10-01-1930 to 10-31-1930
Scale: 1:18,000
Overlap: 60%

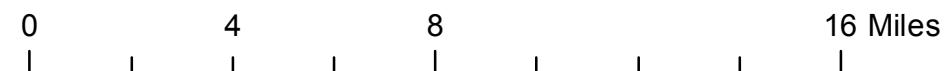
Note: Cedar River watershed (Snoqualmie National Forest). Acquired from Whittier College, January 2013. Nitrate negatives scanned, 2015.

Complete Metadata:
<http://www.library.ucsb.edu/map-imagery-lab/aerial-photography-information>

FLIGHT LOCATION



Sources: Esri, HERE, DeLorme, Intermap, increment P Corp., GEBCO, USGS, FAO, NPS, NRCAN, GeoBase, IGN, Kadaster NL, Ordnance Survey, Esri Japan, METI, Esri China (Hong Kong), swisstopo, MapmyIndia, © OpenStreetMap contributors, and the GIS User Community



Index to Aerial Photography
Page Key

Scale of this index: 1:240,000

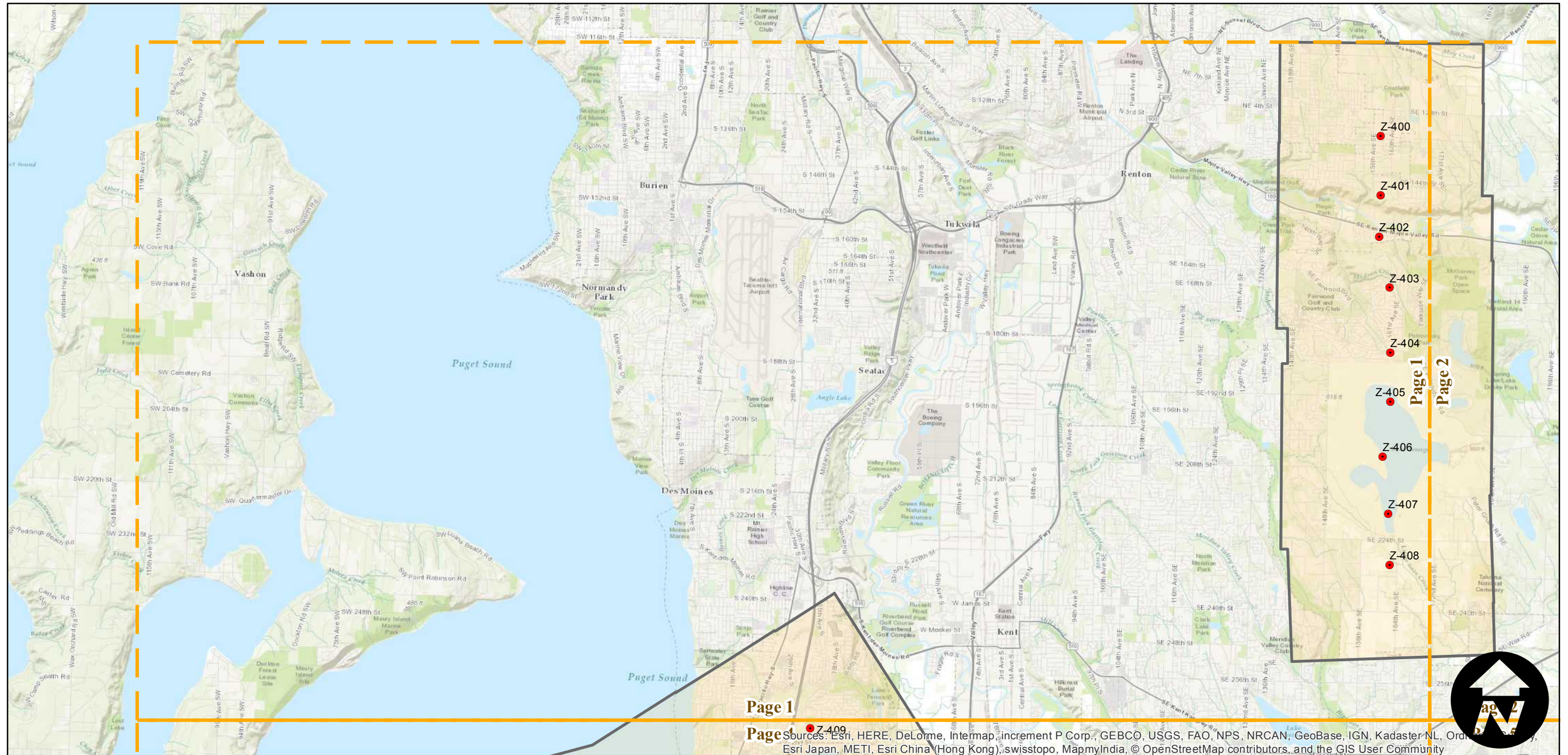
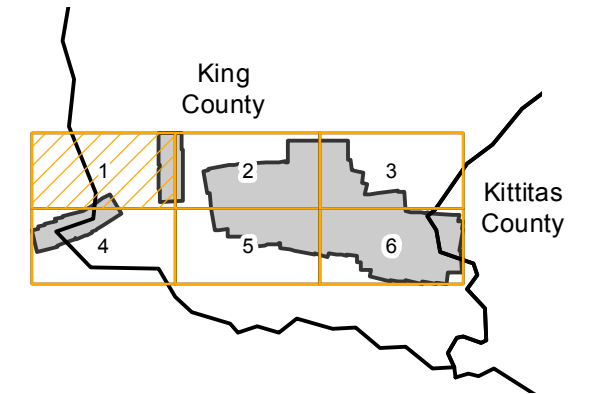
C-1181

Counties: King, Kittitas
Flight date(s): 10-01-1930 to 10-31-1930
Scale: 1:18,000
Overlap: 60%

Note: Cedar River watershed (Snoqualmie National Forest). Acquired from Whittier College, January 2013. Nitrate negatives scanned, 2015.

Complete Metadata:
<http://www.library.ucsb.edu/map-imagery-lab/aerial-photography-information>

FLIGHT LOCATION



0 1 2 4 Miles

Index to Aerial Photography
Page 1 of 6

Scale of this index: 1:90,000

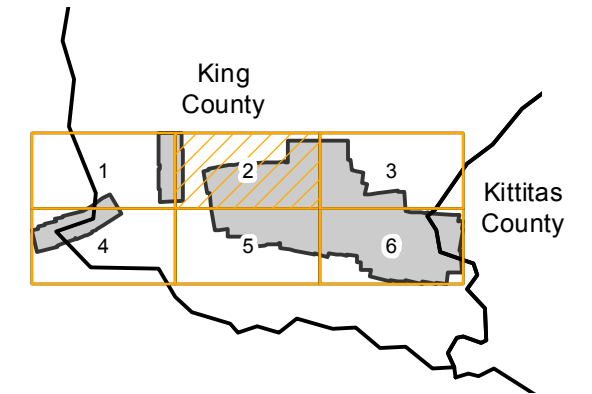
Sources: Esri, HERE, DeLorme, Intermap, increment P Corp., GEBCO, USGS, FAO, NPS, NRCAN, GeoBase, IGN, Kadaster NL, Ordnance Survey, Esri Japan, METI, Esri China (Hong Kong), swisstopo, MapmyIndia, © OpenStreetMap contributors, and the GIS User Community

C-1181

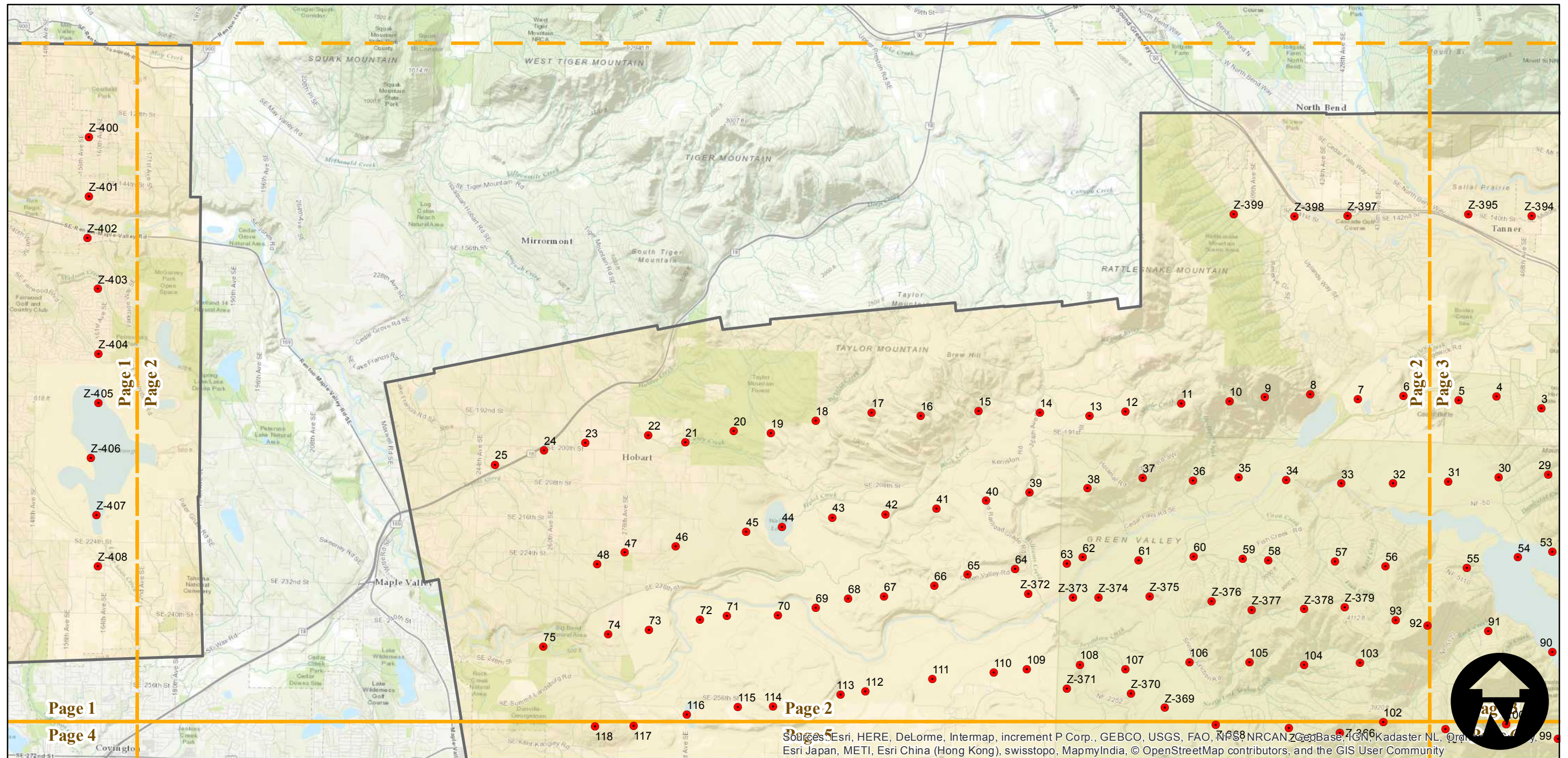
Counties: King, Kittitas
Flight date(s): 10-01-1930 to 10-31-1930
Scale: 1:18,000
Overlap: 60%

Note: Cedar River watershed (Snoqualmie National Forest). Acquired from Whittier College, January 2013. Nitrate negatives scanned, 2015.

FLIGHT LOCATION



Complete Metadata:
<http://www.library.ucsb.edu/map-imagery-lab/aerial-photography-information>



0 1 2 4 Miles

Index to Aerial Photography
Page 2 of 6

Scale of this index: 1:90,000

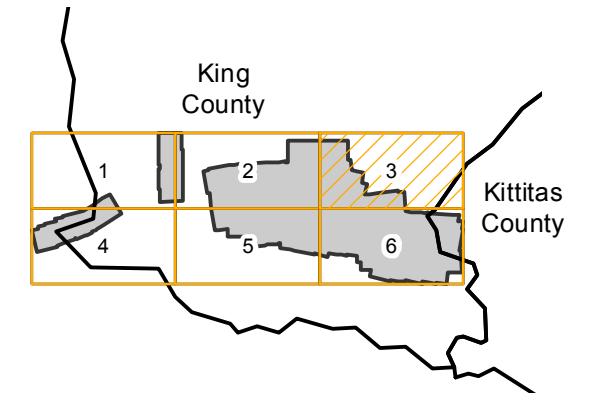
Sources: Esri, HERE, DeLorme, Intermap, increment P Corp., GEBCO, USGS, FAO, NPS, NRCAN, GeBCO, IGN, Kadaster NL, Ordnance Survey, Esri Japan, METI, Esri China (Hong Kong), swisstopo, MapmyIndia, © OpenStreetMap contributors, and the GIS User Community

C-1181

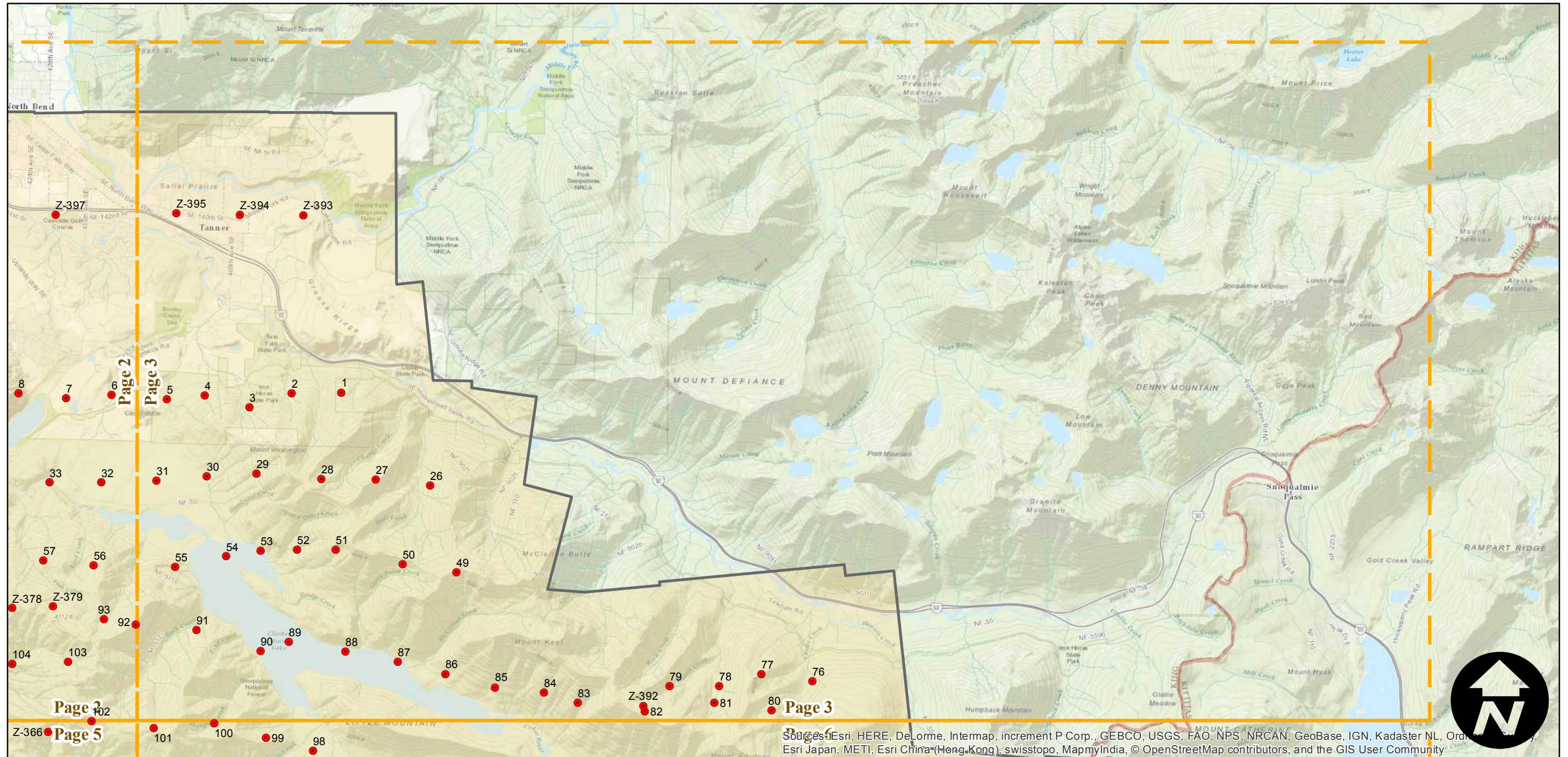
Counties: King, Kittitas
Flight date(s): 10-01-1930 to 10-31-1930
Scale: 1:18,000
Overlap: 60%

Note: Cedar River watershed (Snoqualmie National Forest). Acquired from Whittier College, January 2013. Nitrate negatives scanned, 2015.

FLIGHT LOCATION



Complete Metadata:
<http://www.library.ucsb.edu/map-imagery-lab/aerial-photography-information>



0 1 2 4 Miles

Index to Aerial Photography
Page 3 of 6

Scale of this index: 1:90,000

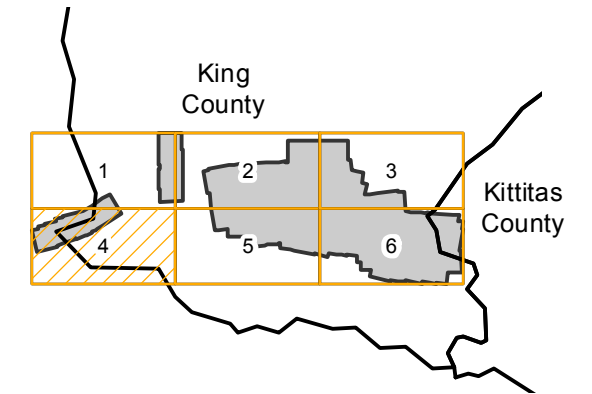
Sources: Esri, HERE, DeLorme, Intermap, increment P Corp., GEBCO, USGS, FAO, NPS, NRCAN, GeoBase, IGN, Kadaster NL, Ordnance Survey, Esri Japan, METI, Esri China (Hong Kong), swisstopo, MapmyIndia, © OpenStreetMap contributors, and the GIS User Community

C-1181

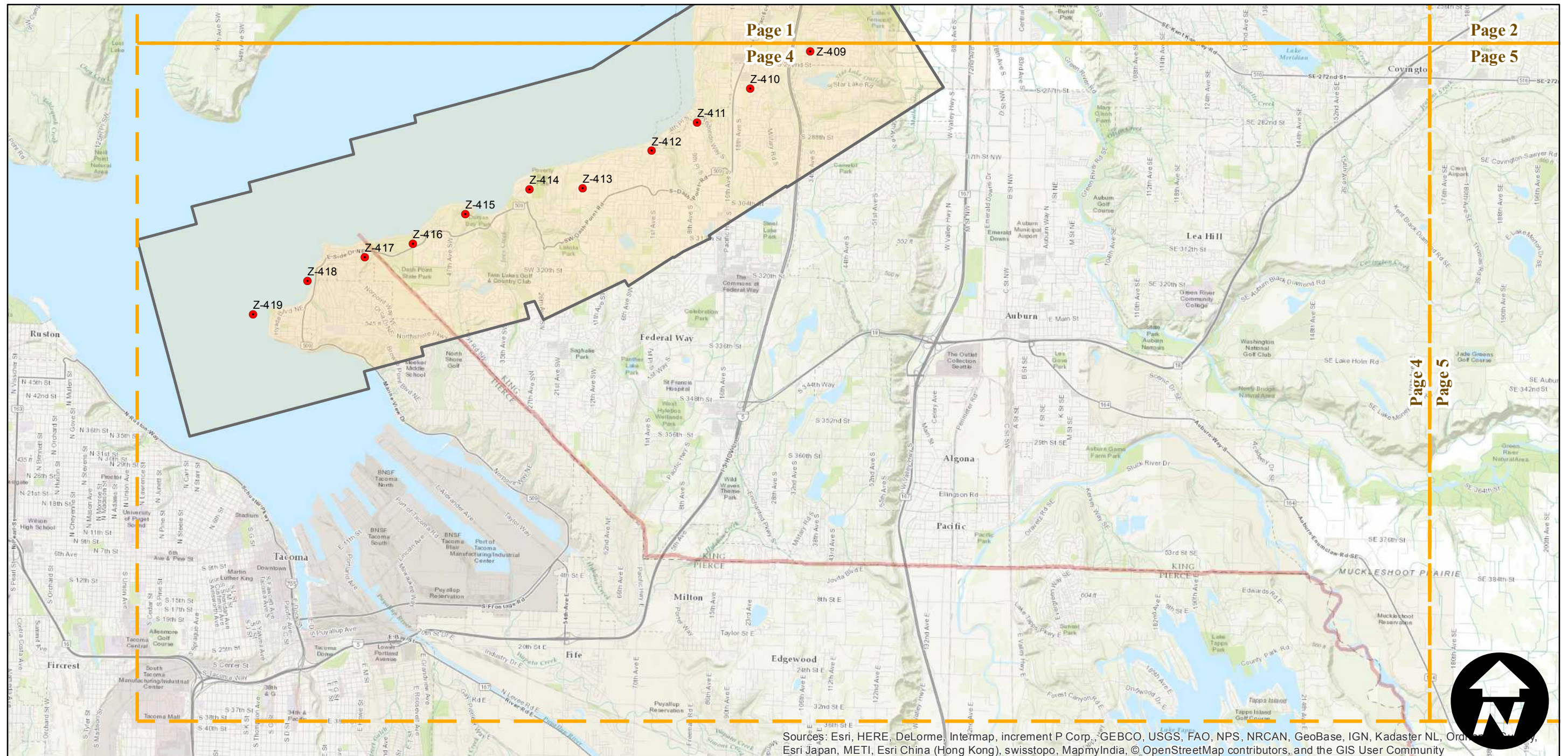
Counties: King, Kittitas
Flight date(s): 10-01-1930 to 10-31-1930
Scale: 1:18,000
Overlap: 60%

Note: Cedar River watershed (Snoqualmie National Forest). Acquired from Whittier College, January 2013. Nitrate negatives scanned, 2015.

FLIGHT LOCATION



Complete Metadata:
<http://www.library.ucsb.edu/map-imagery-lab/aerial-photography-information>



Sources: Esri, HERE, DeLorme, Intermap, increment P Corp., GEBCO, USGS, FAO, NPS, NRCAN, GeoBase, IGN, Kadaster NL, Ordnance Survey, Esri Japan, METI, Esri China (Hong Kong), swisstopo, MapmyIndia, © OpenStreetMap contributors, and the GIS User Community

0 1 2 4 Miles

Index to Aerial Photography
Page 4 of 6

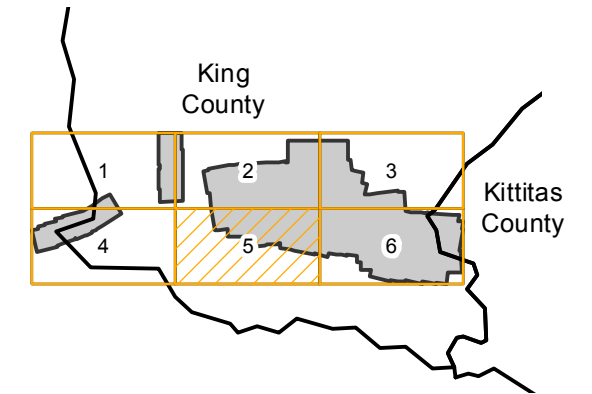
Scale of this index: 1:90,000

C-1181

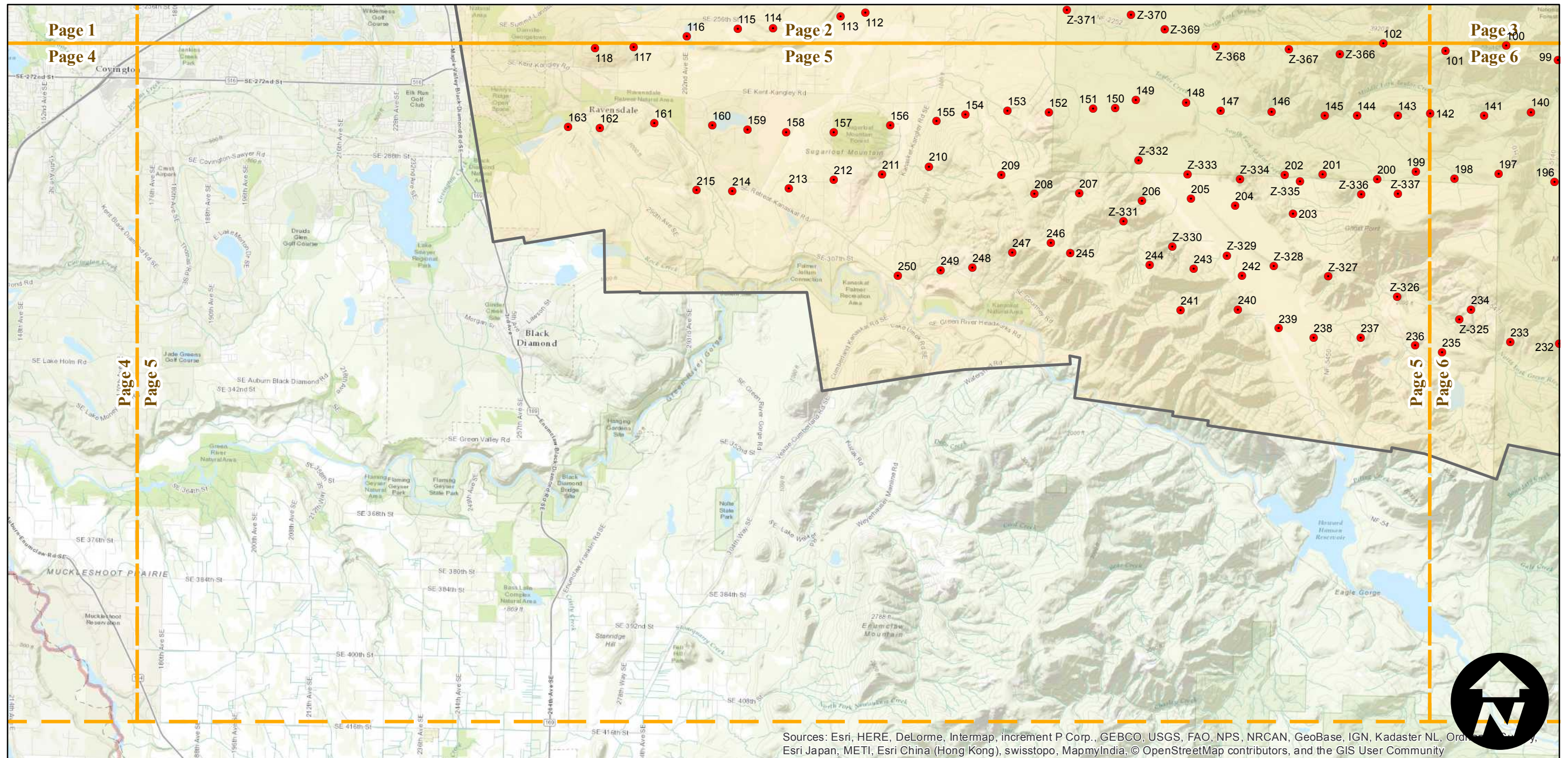
Counties: King, Kittitas
Flight date(s): 10-01-1930 to 10-31-1930
Scale: 1:18,000
Overlap: 60%

Note: Cedar River watershed (Snoqualmie National Forest). Acquired from Whittier College, January 2013. Nitrate negatives scanned, 2015.

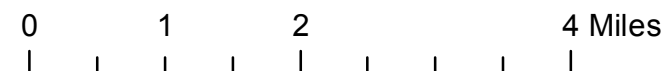
FLIGHT LOCATION



Complete Metadata:
<http://www.library.ucsb.edu/map-imagery-lab/aerial-photography-information>



Sources: Esri, HERE, DeLorme, Intermap, increment P Corp., GEBCO, USGS, FAO, NPS, NRCAN, GeoBase, IGN, Kadaster NL, Ordnance Survey, Esri Japan, METI, Esri China (Hong Kong), swisstopo, MapmyIndia, © OpenStreetMap contributors, and the GIS User Community

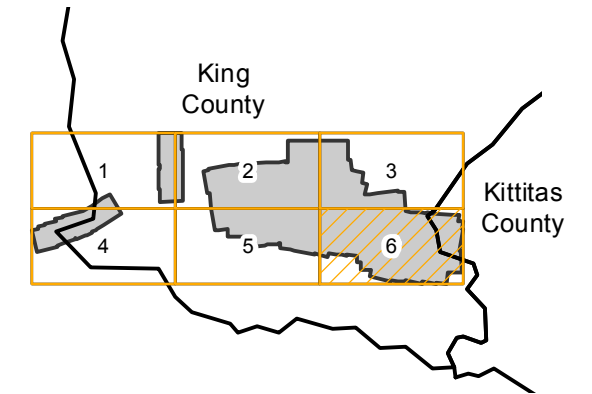


C-1181

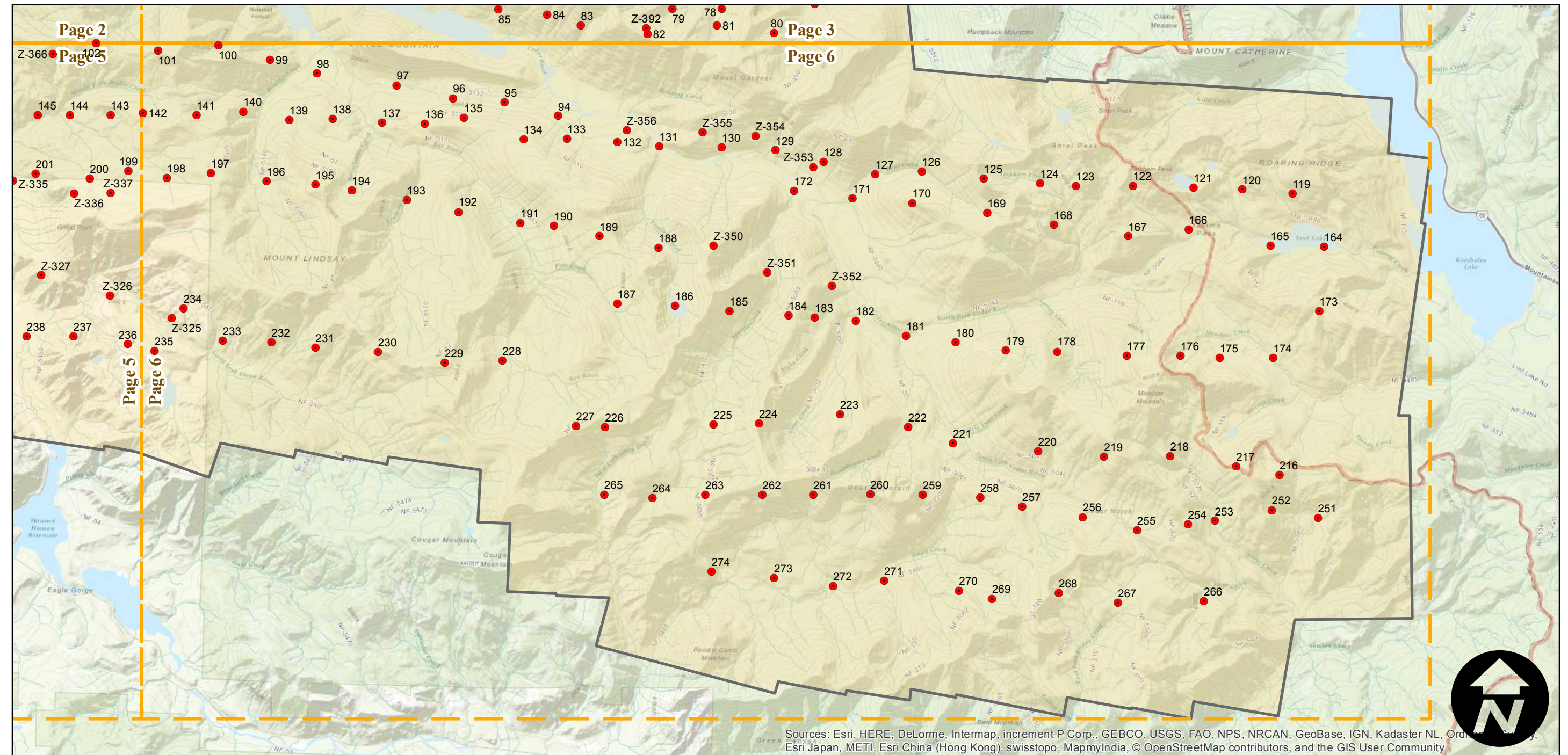
Counties: King, Kittitas
Flight date(s): 10-01-1930 to 10-31-1930
Scale: 1:18,000
Overlap: 60%

Note: Cedar River watershed (Snoqualmie National Forest). Acquired from Whittier College, January 2013. Nitrate negatives scanned, 2015.

FLIGHT LOCATION



Complete Metadata:
<http://www.library.ucsb.edu/map-imagery-lab/aerial-photography-information>



0 1 2 4 Miles

Index to Aerial Photography
Page 6 of 6

Scale of this index: 1:90,000

Sources: Esri, HERE, DeLorme, Intermap, increment P Corp., GEBCO, USGS, FAO, NPS, NRCAN, GeoBase, IGN, Kadaster NL, Ordnance Survey, Esri Japan, METI, Esri China (Hong Kong), swisstopo, MapmyIndia, © OpenStreetMap contributors, and the GIS User Community