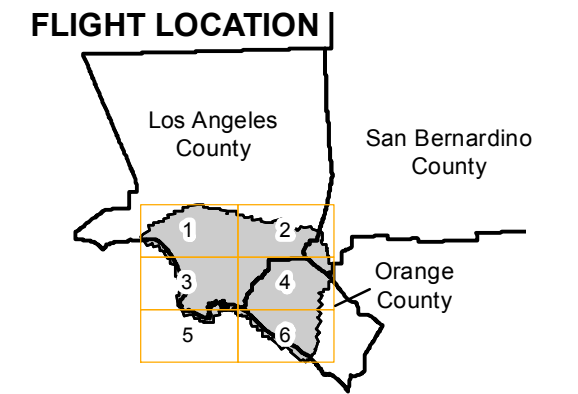


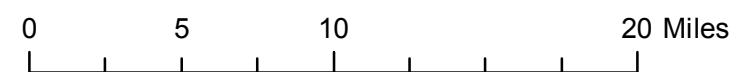
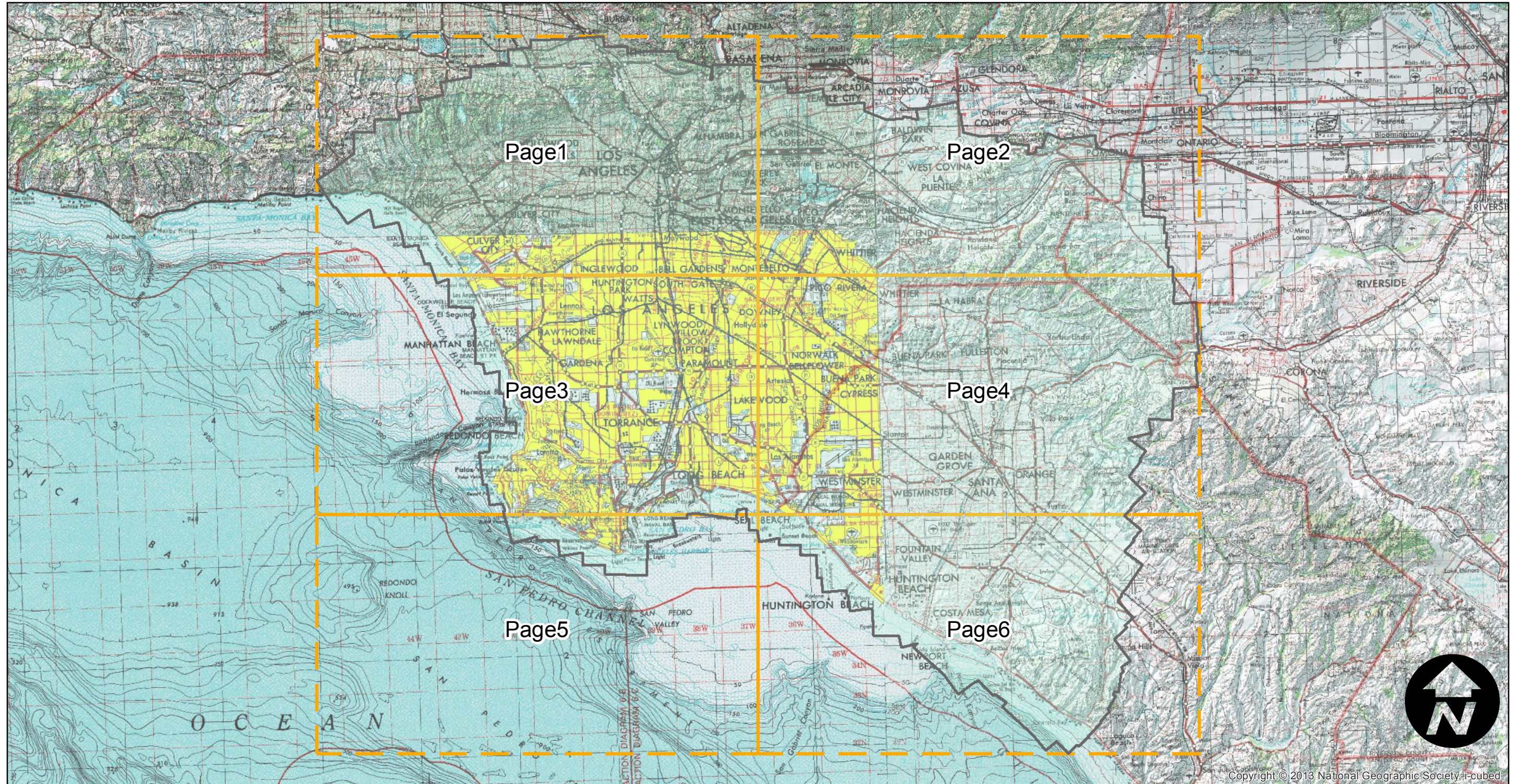
C-113

Counties: Los Angeles, Orange, San Bernardino
Flight date(s): 08-01-1927 to 08-31-1927
Scale: 1:18,000
Overlap: 60%

Note: Los Angeles County south of Santa Monica Mountains and Interstate 210 and Orange County west of SR 133; vicinity of Chino Hills. Overlap within flightlines is not consistent. Copy negatives acquired from Teledyne, Inc., 1986; nitrate negatives and prints acquired from Whittier College, January 2013.



Complete Metadata:
<http://www.library.ucsb.edu/mil/aerial-photography-tools>



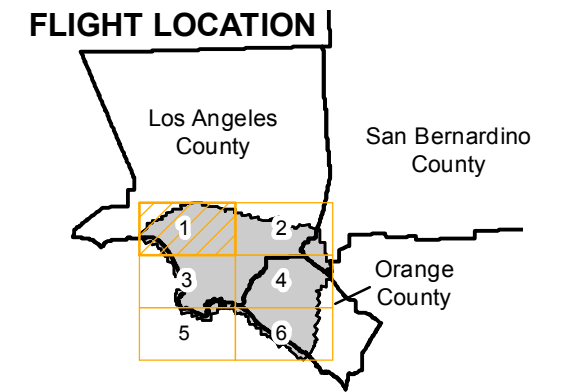
Index to Aerial Photography
Page Key

Scale of this index: 1:400,000

C-113

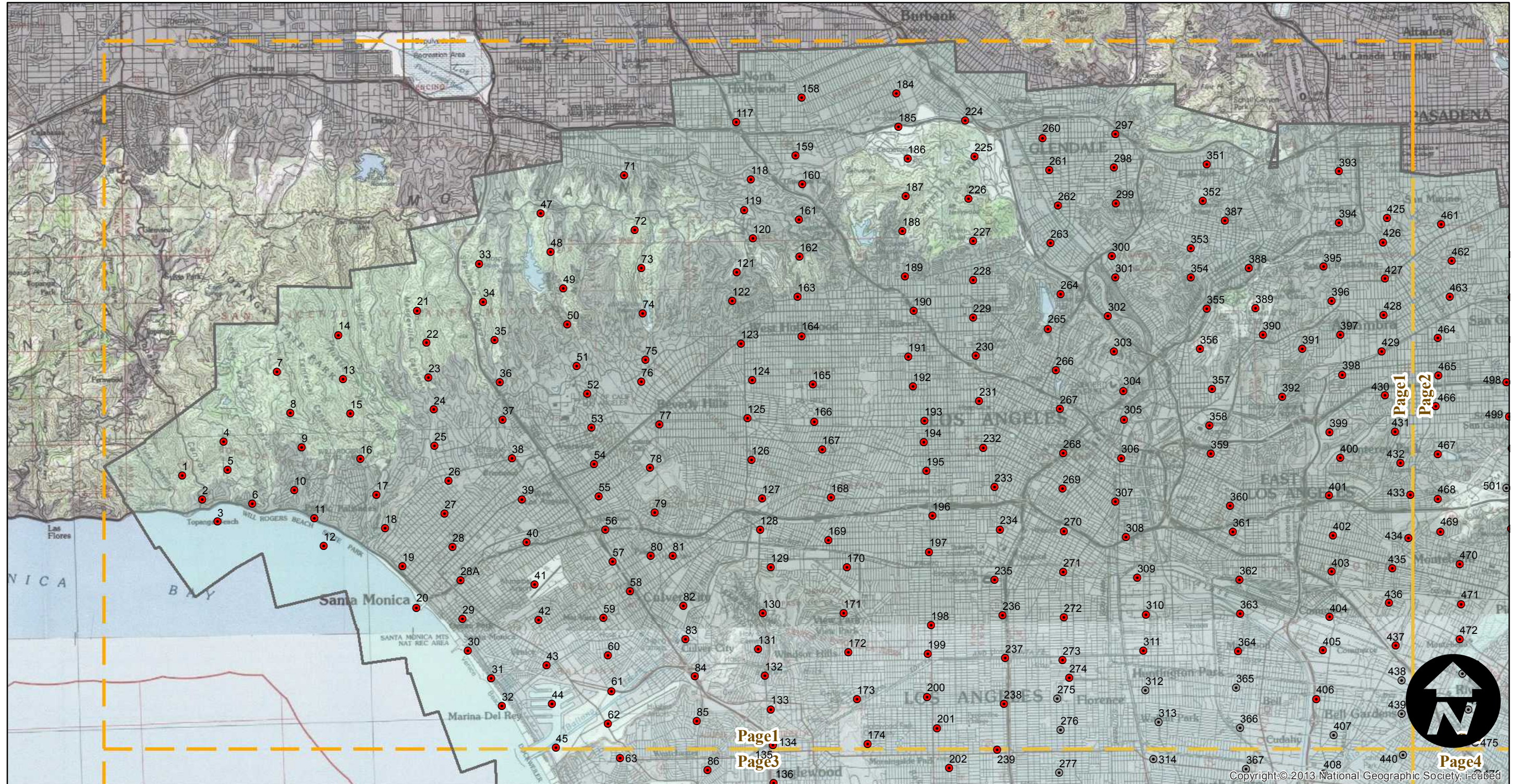
Counties: Los Angeles, Orange, San Bernardino
Flight date(s): 08-01-1927 to 08-31-1927
Scale: 1:18,000
Overlap: 60%

Note: Los Angeles County south of Santa Monica Mountains and Interstate 210 and Orange County west of SR 133; vicinity of Chino Hills. Overlap within flightlines is not consistent. Copy negatives acquired from Teledyne, Inc., 1986; nitrate negatives and prints acquired from Whittier College, January 2013.



Complete Metadata:
<http://www.library.ucsb.edu/mil/aerial-photography-tools>

- MIL owns frame
- MIL does not own frame



0 2 4 8 Miles

Index to Aerial Photography
Page 1 of 6

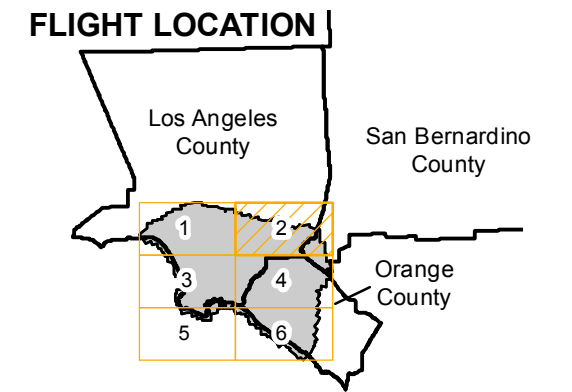
Scale of this index: 1:135,000

Copyright © 2013 National Geographic Society. I-6066d

C-113

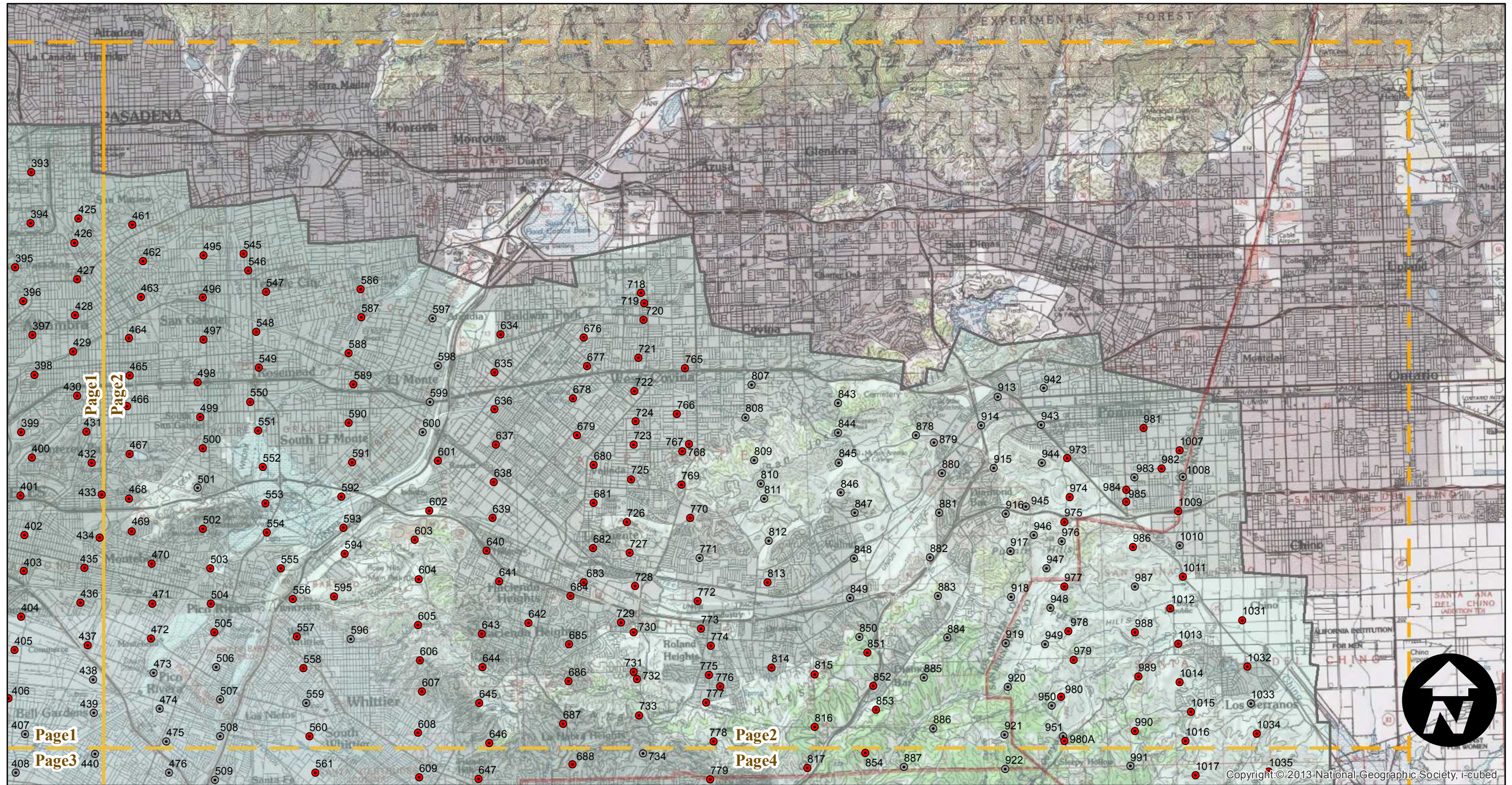
Counties: Los Angeles, Orange, San Bernardino
Flight date(s): 08-01-1927 to 08-31-1927
Scale: 1:18,000
Overlap: 60%

Note: Los Angeles County south of Santa Monica Mountains and Interstate 210 and Orange County west of SR 133; vicinity of Chino Hills. Overlap within flightlines is not consistent. Copy negatives acquired from Teledyne, Inc., 1986; nitrate negatives and prints acquired from Whittier College, January 2013.



Complete Metadata:
<http://www.library.ucsb.edu/mil/aerial-photography-tools>

- MIL owns frame
- MIL does not own frame



0 2 4 8 Miles

Index to Aerial Photography
Page 2 of 6

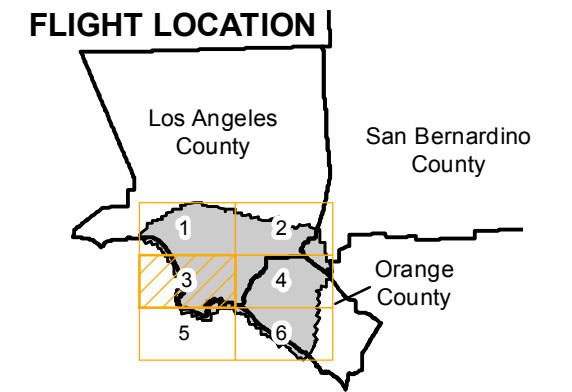
Scale of this index: 1:135,000

Copyright: © 2013 National Geographic Society, i-cubed.

C-113

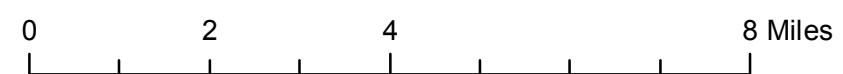
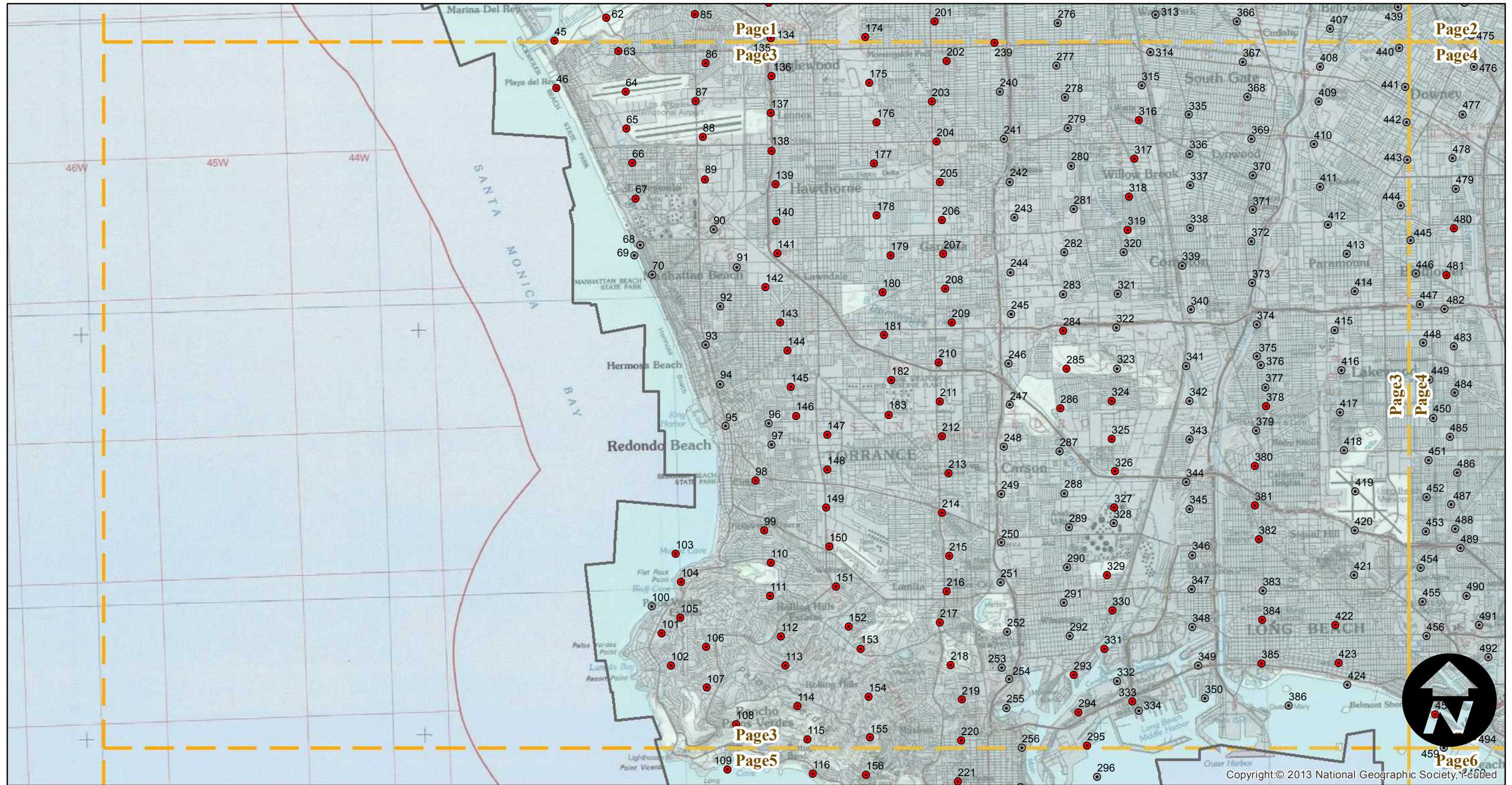
Counties: Los Angeles, Orange, San Bernardino
Flight date(s): 08-01-1927 to 08-31-1927
Scale: 1:18,000
Overlap: 60%

Note: Los Angeles County south of Santa Monica Mountains and Interstate 210 and Orange County west of SR 133; vicinity of Chino Hills. Overlap within flightlines is not consistent. Copy negatives acquired from Teledyne, Inc., 1986; nitrate negatives and prints acquired from Whittier College, January 2013.



Complete Metadata:
<http://www.library.ucsb.edu/mil/aerial-photography-tools>

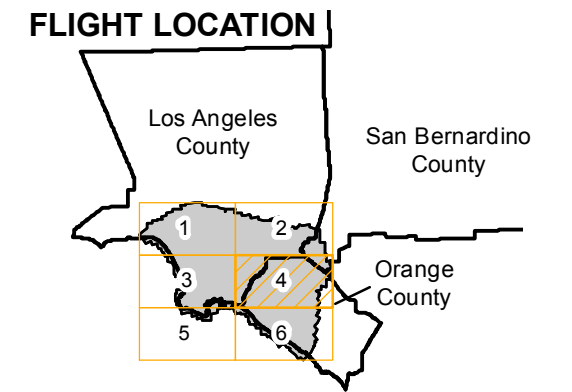
- MIL owns frame
- MIL does not own frame



C-113

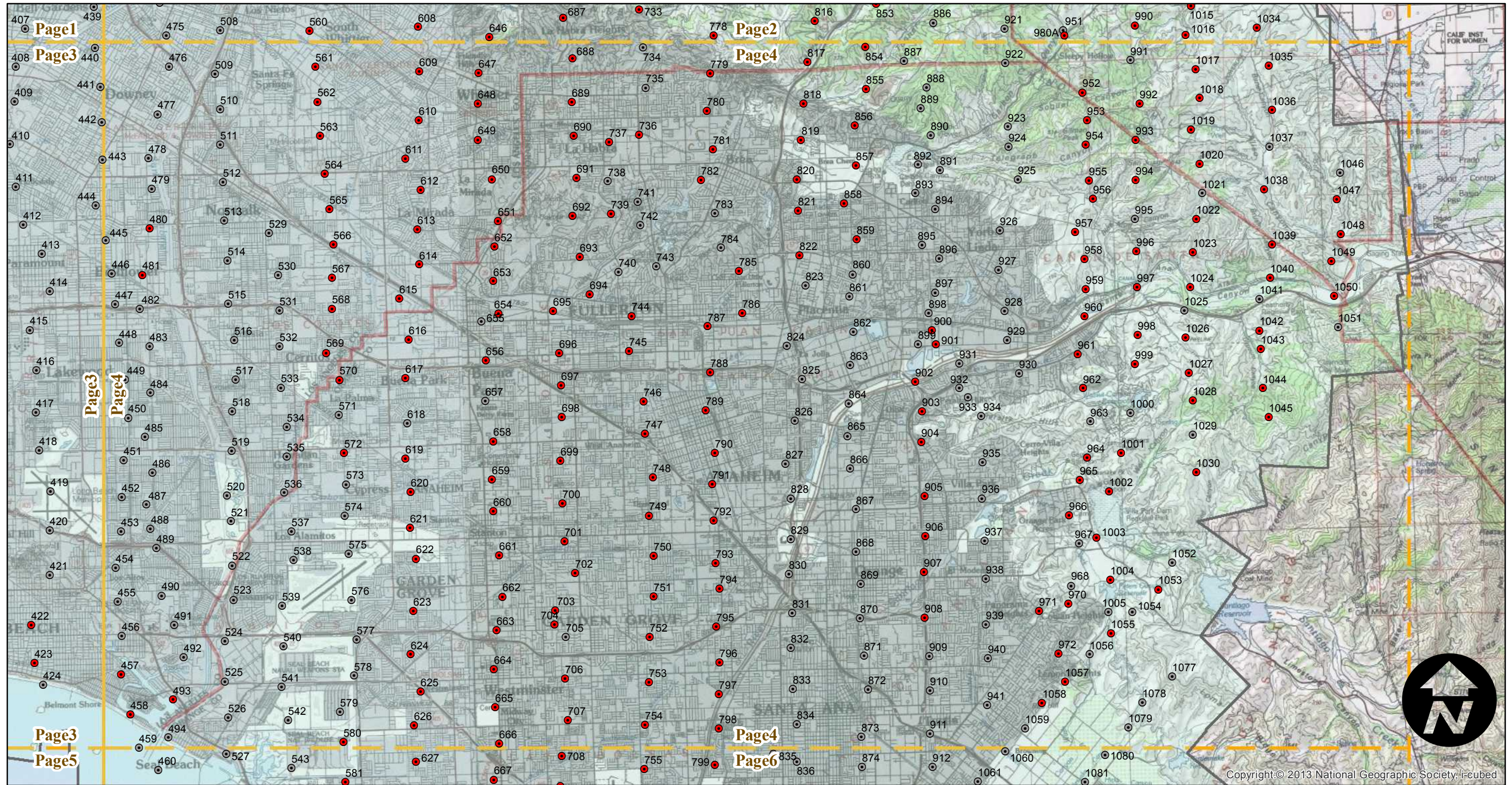
Counties: Los Angeles, Orange, San Bernardino
Flight date(s): 08-01-1927 to 08-31-1927
Scale: 1:18,000
Overlap: 60%

Note: Los Angeles County south of Santa Monica Mountains and Interstate 210 and Orange County west of SR 133; vicinity of Chino Hills. Overlap within flightlines is not consistent. Copy negatives acquired from Teledyne, Inc., 1986; nitrate negatives and prints acquired from Whittier College, January 2013.



Complete Metadata:
<http://www.library.ucsb.edu/mil/aerial-photography-tools>

- MIL owns frame
- MIL does not own frame



0 2 4 8 Miles

Index to Aerial Photography
Page 4 of 6

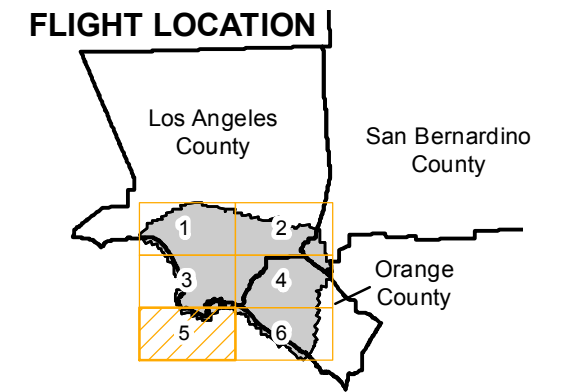
Scale of this index: 1:135,000

Copyright:© 2013 National Geographic Society, i-cubed

C-113

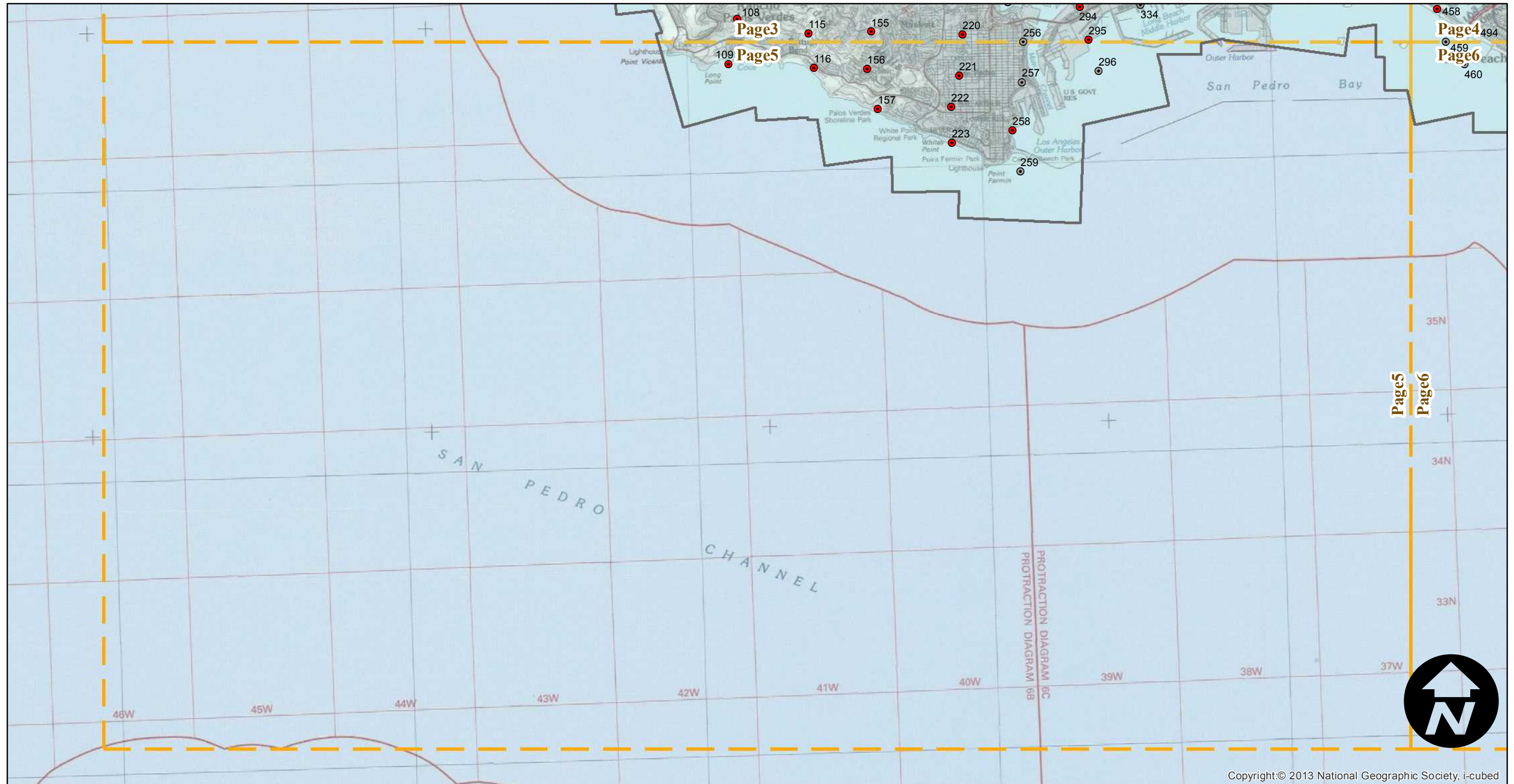
Counties: Los Angeles, Orange, San Bernardino
Flight date(s): 08-01-1927 to 08-31-1927
Scale: 1:18,000
Overlap: 60%

Note: Los Angeles County south of Santa Monica Mountains and Interstate 210 and Orange County west of SR 133; vicinity of Chino Hills. Overlap within flightlines is not consistent. Copy negatives acquired from Teledyne, Inc., 1986; nitrate negatives and prints acquired from Whittier College, January 2013.



Complete Metadata:
<http://www.library.ucsb.edu/mil/aerial-photography-tools>

- MIL owns frame
- MIL does not own frame

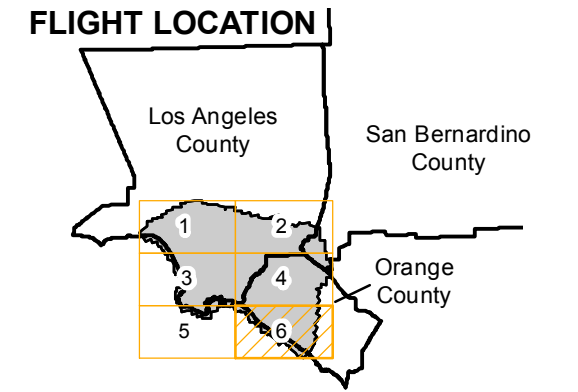


0 2 4 8 Miles

C-113

Counties: Los Angeles, Orange, San Bernardino
Flight date(s): 08-01-1927 to 08-31-1927
Scale: 1:18,000
Overlap: 60%

Note: Los Angeles County south of Santa Monica Mountains and Interstate 210 and Orange County west of SR 133; vicinity of Chino Hills. Overlap within flightlines is not consistent. Copy negatives acquired from Teledyne, Inc., 1986; nitrate negatives and prints acquired from Whittier College, January 2013.



Complete Metadata:
<http://www.library.ucsb.edu/mil/aerial-photography-tools>

- MIL owns frame
- MIL does not own frame

