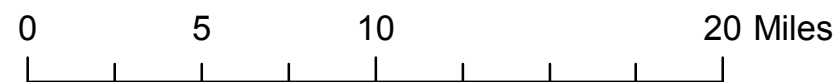
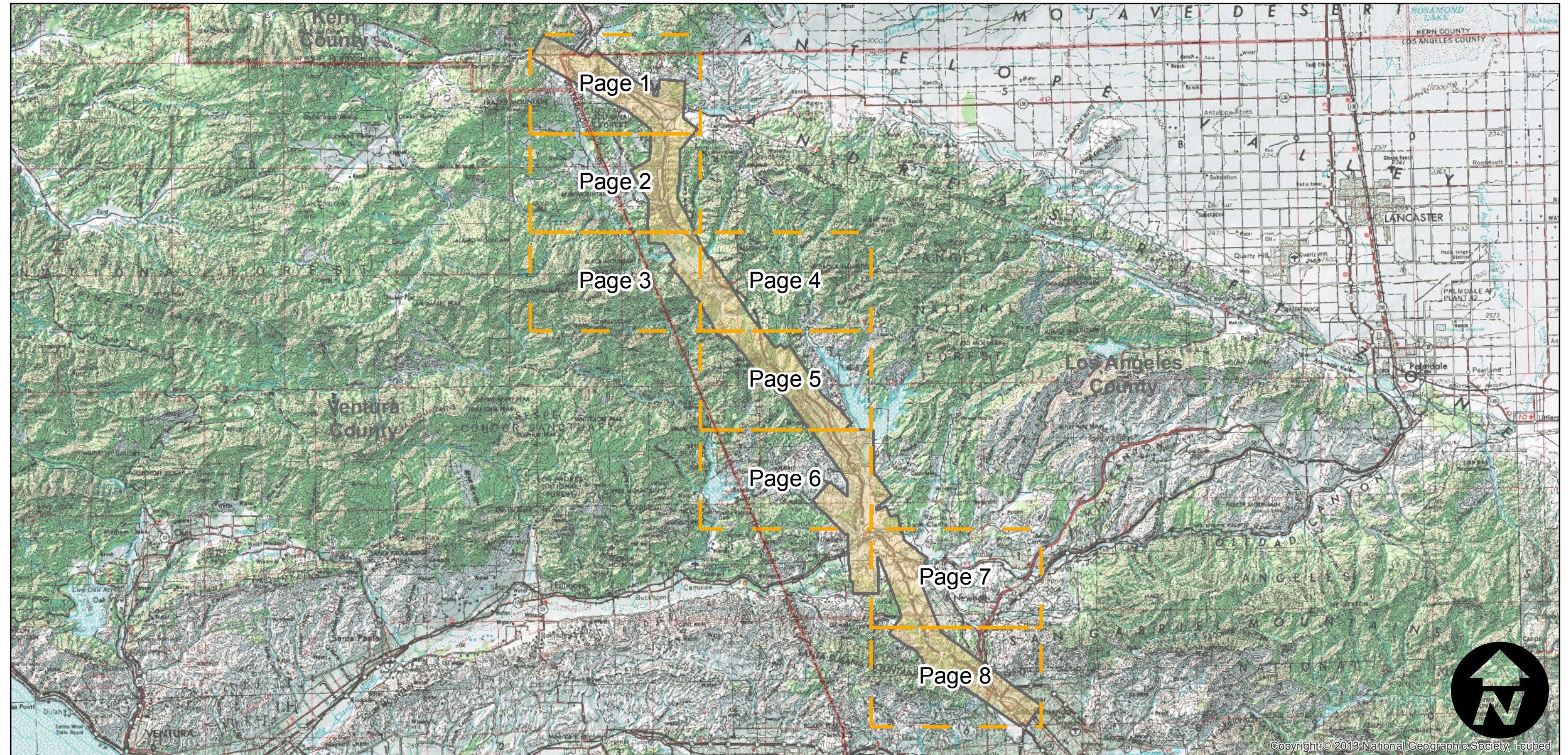
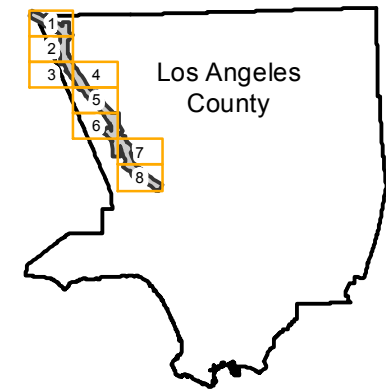


C-10020

Counties: Los Angeles
Flight date(s): 01-09-1946 to 02-01-1946
Scale: 1:9,600
Overlap: 60%

Note: Highway 99/Ridge Route (present-day Interstate 5, The Old Road and San Fernando Road) from Sylmar to Tejon Pass. Overlap within flightlines is not consistent. Imagery acquired January 2013.

FLIGHT LOCATION



Index to Aerial Photography
Page Key

Scale of this index: 1:350,000



Copyright © 2013 National Geographic Society, I-cubed

C-10020

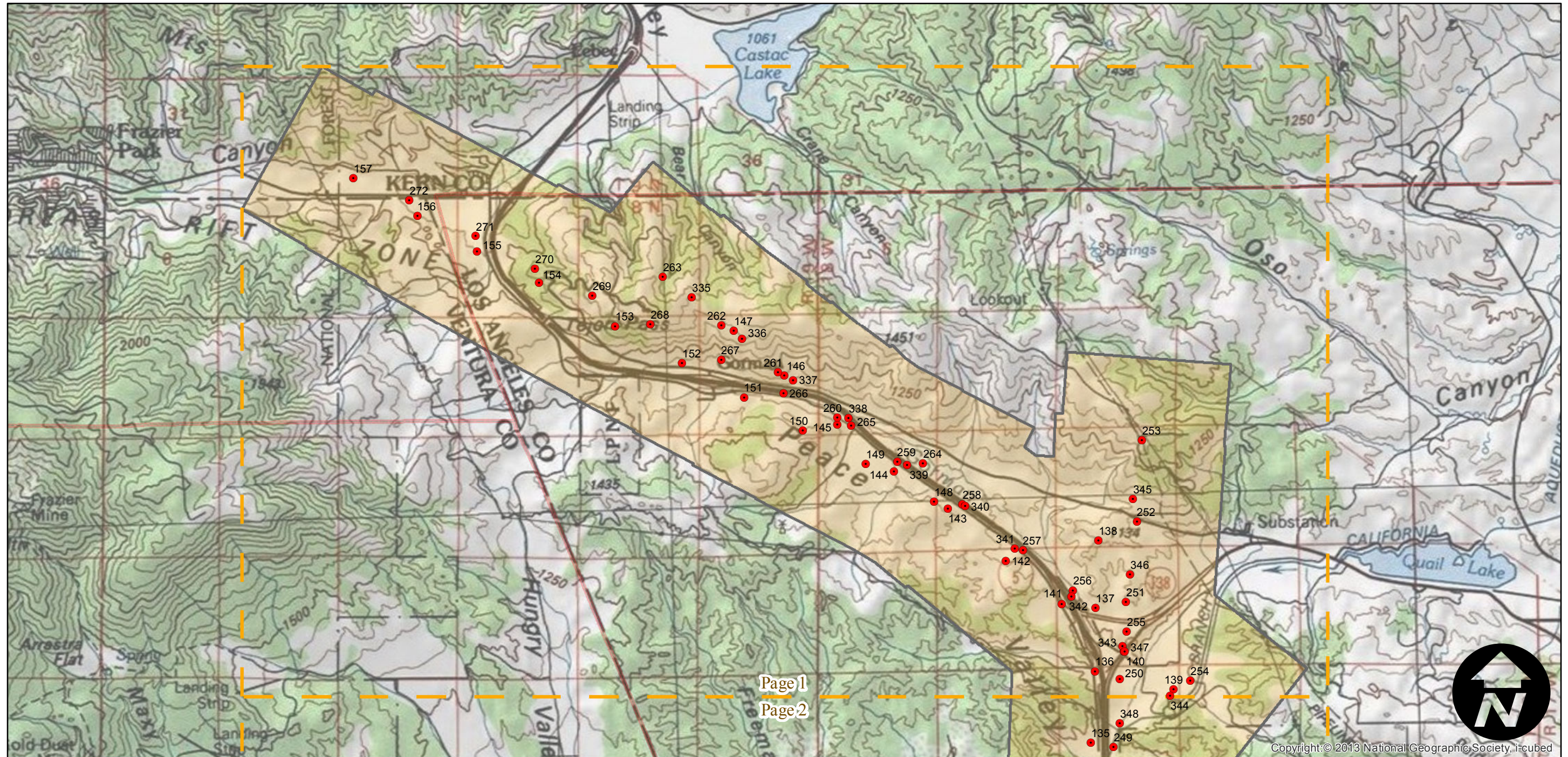
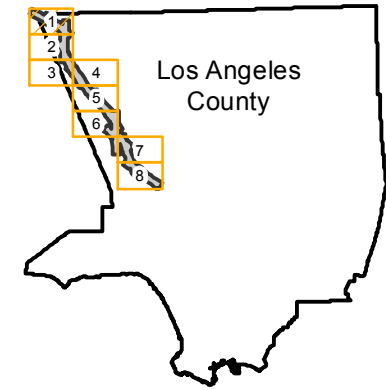
Counties: Los Angeles
Flight date(s): 01-09-1946 to 02-01-1946
Scale: 1:9,600
Overlap: 60%

Complete Metadata:
<http://www.library.ucsb.edu/mil/aerial-photography-tools>

Note: Highway 99/Ridge Route (present-day Interstate 5, The Old Road and San Fernando Road) from Sylmar to Tejon Pass. Overlap within flightlines is not consistent. Imagery acquired January 2013.

- MIL owns frame
- MIL does not own frame

FLIGHT LOCATION



0 1 2 4 Miles

Index to Aerial Photography
Page 1 of 8

Scale of this index: 1:55,000



Copyright © 2013 National Geographic Society, i-cubed

C-10020

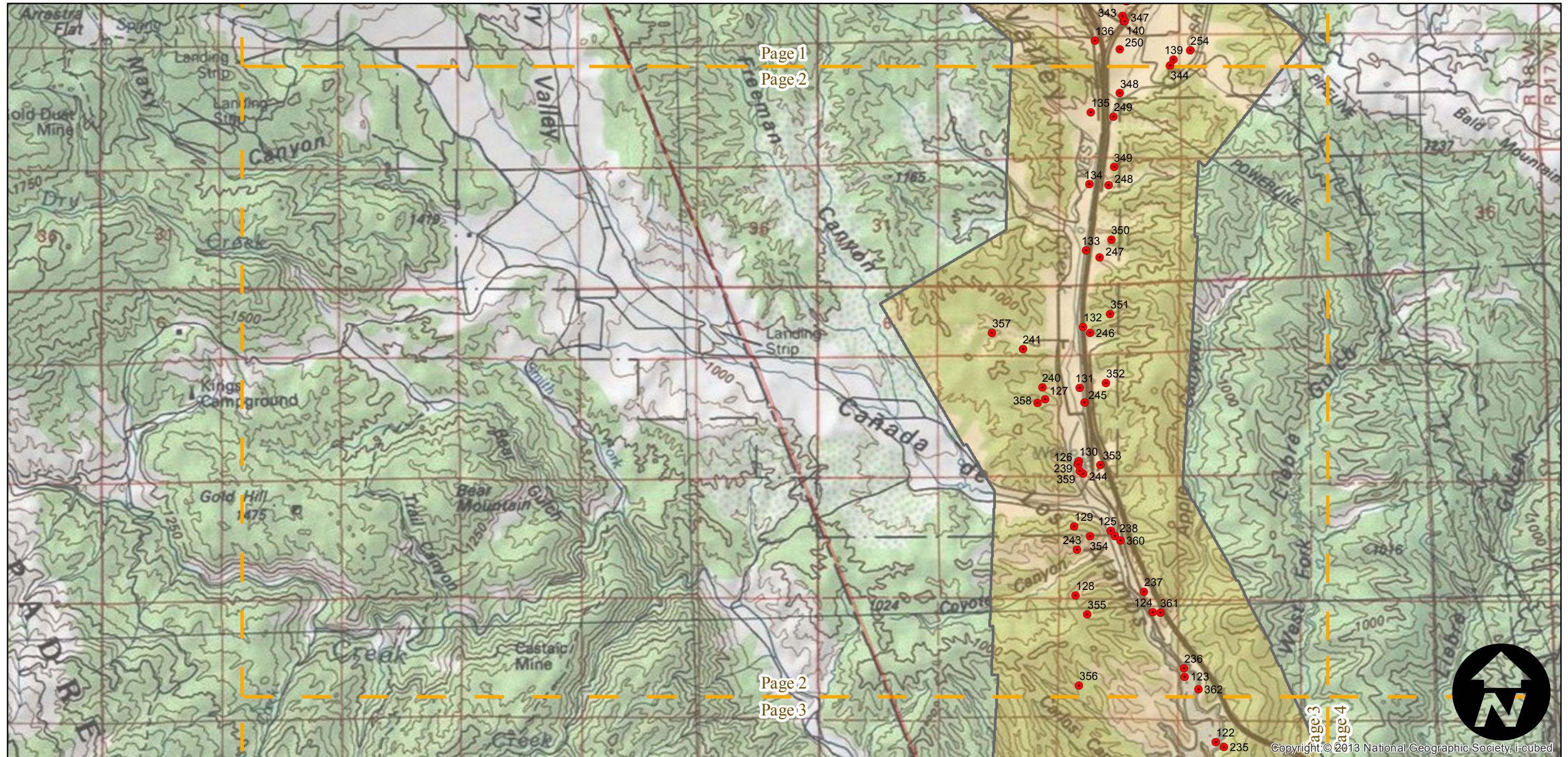
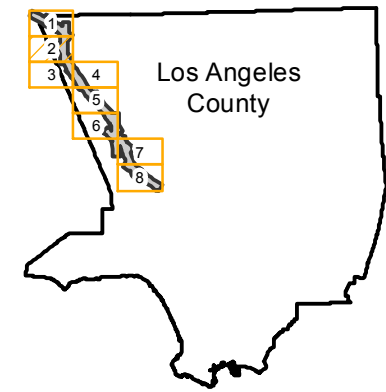
Counties: Los Angeles
Flight date(s): 01-09-1946 to 02-01-1946
Scale: 1:9,600
Overlap: 60%

Complete Metadata:
<http://www.library.ucsb.edu/mil/aerial-photography-tools>

Note: Highway 99/Ridge Route (present-day Interstate 5, The Old Road and San Fernando Road) from Sylmar to Tejon Pass. Overlap within flightlines is not consistent. Imagery acquired January 2013.

- MIL owns frame
- MIL does not own frame

FLIGHT LOCATION



0 1 2 4 Miles

Index to Aerial Photography
Page 2 of 8

Scale of this index: 1:55,000

C-10020

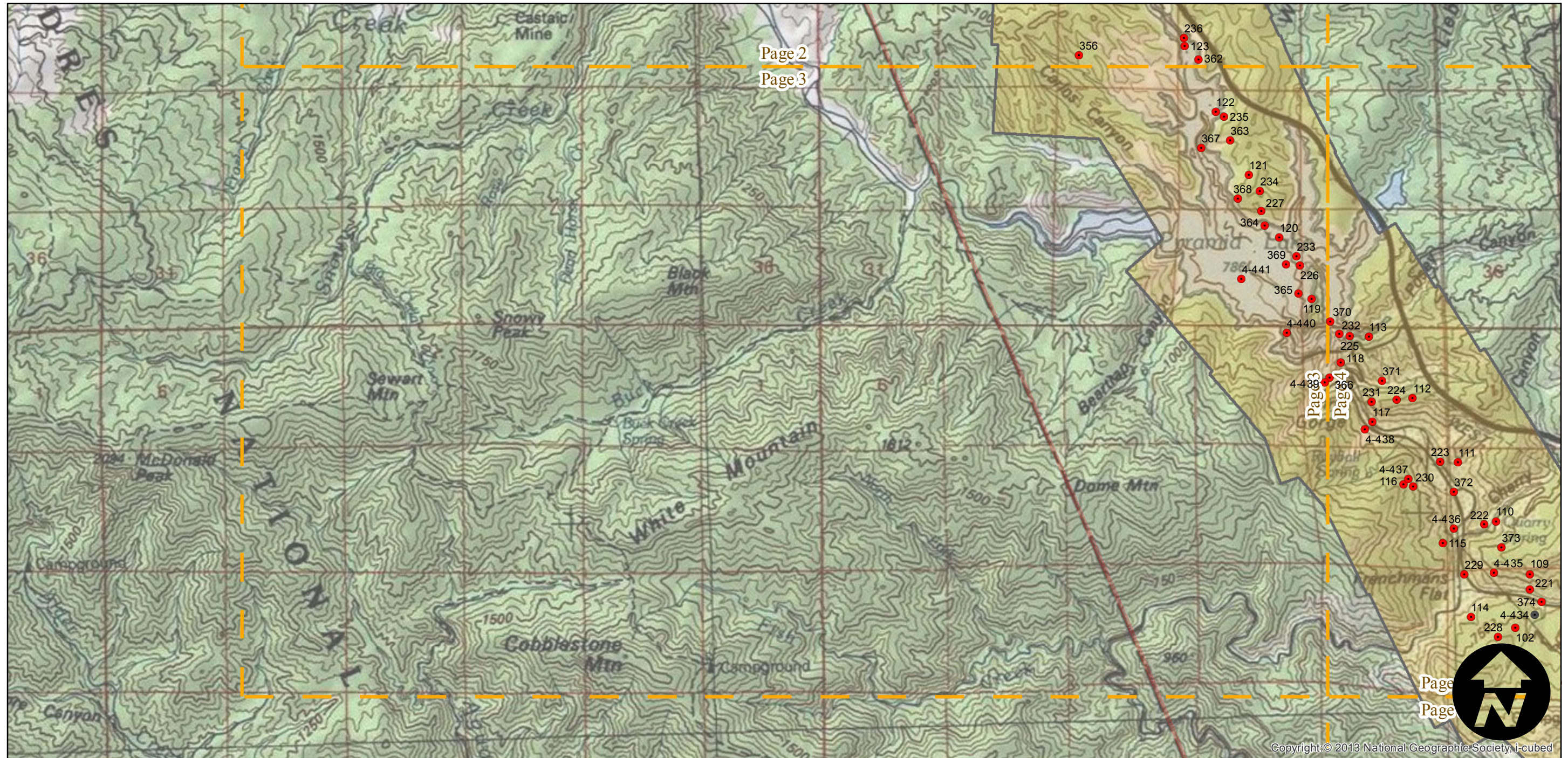
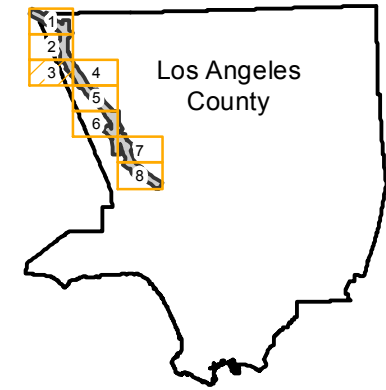
Counties: Los Angeles
Flight date(s): 01-09-1946 to 02-01-1946
Scale: 1:9,600
Overlap: 60%

Complete Metadata:
<http://www.library.ucsb.edu/mil/aerial-photography-tools>

Note: Highway 99/Ridge Route (present-day Interstate 5, The Old Road and San Fernando Road) from Sylmar to Tejon Pass. Overlap within flightlines is not consistent. Imagery acquired January 2013.

- MIL owns frame
- MIL does not own frame

FLIGHT LOCATION



0 1 2 4 Miles

Index to Aerial Photography
Page 3 of 8

Scale of this index: 1:55,000

Copyright © 2013 National Geographic Society, i-cubed

C-10020

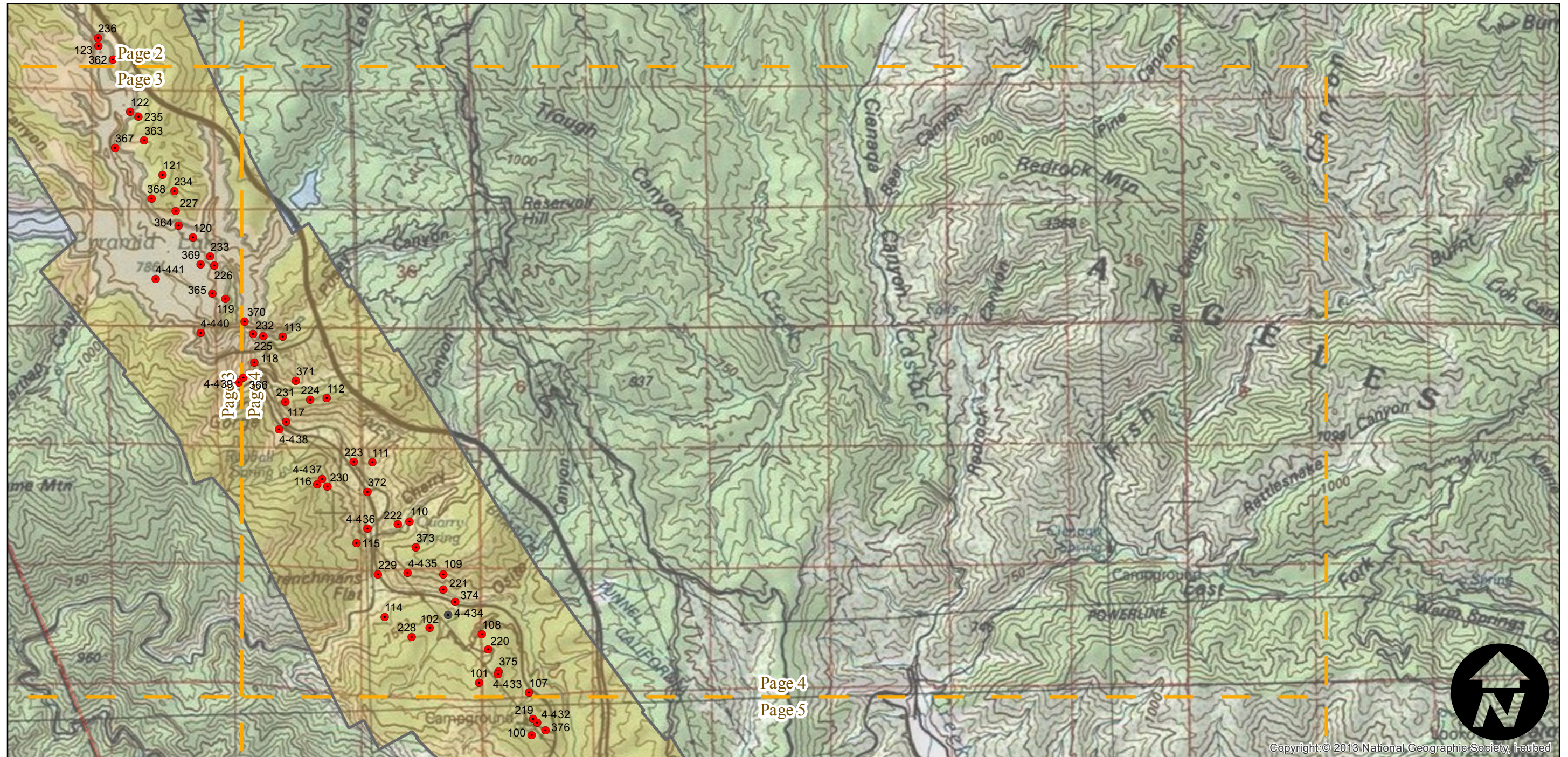
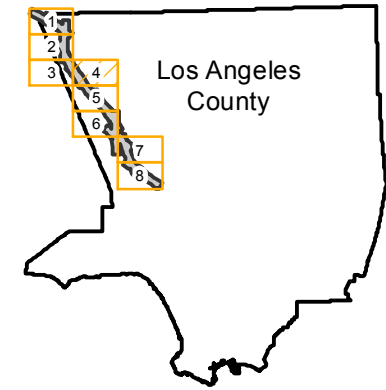
Counties: Los Angeles
Flight date(s): 01-09-1946 to 02-01-1946
Scale: 1:9,600
Overlap: 60%

Complete Metadata:
<http://www.library.ucsb.edu/mil/aerial-photography-tools>

Note: Highway 99/Ridge Route (present-day Interstate 5, The Old Road and San Fernando Road) from Sylmar to Tejon Pass. Overlap within flightlines is not consistent. Imagery acquired January 2013.

- MIL owns frame
- MIL does not own frame

FLIGHT LOCATION



0 1 2 4 Miles

Index to Aerial Photography
Page 4 of 8

Scale of this index: 1:55,000

Copyright © 2013 National Geographic Society, i-cubed

C-10020

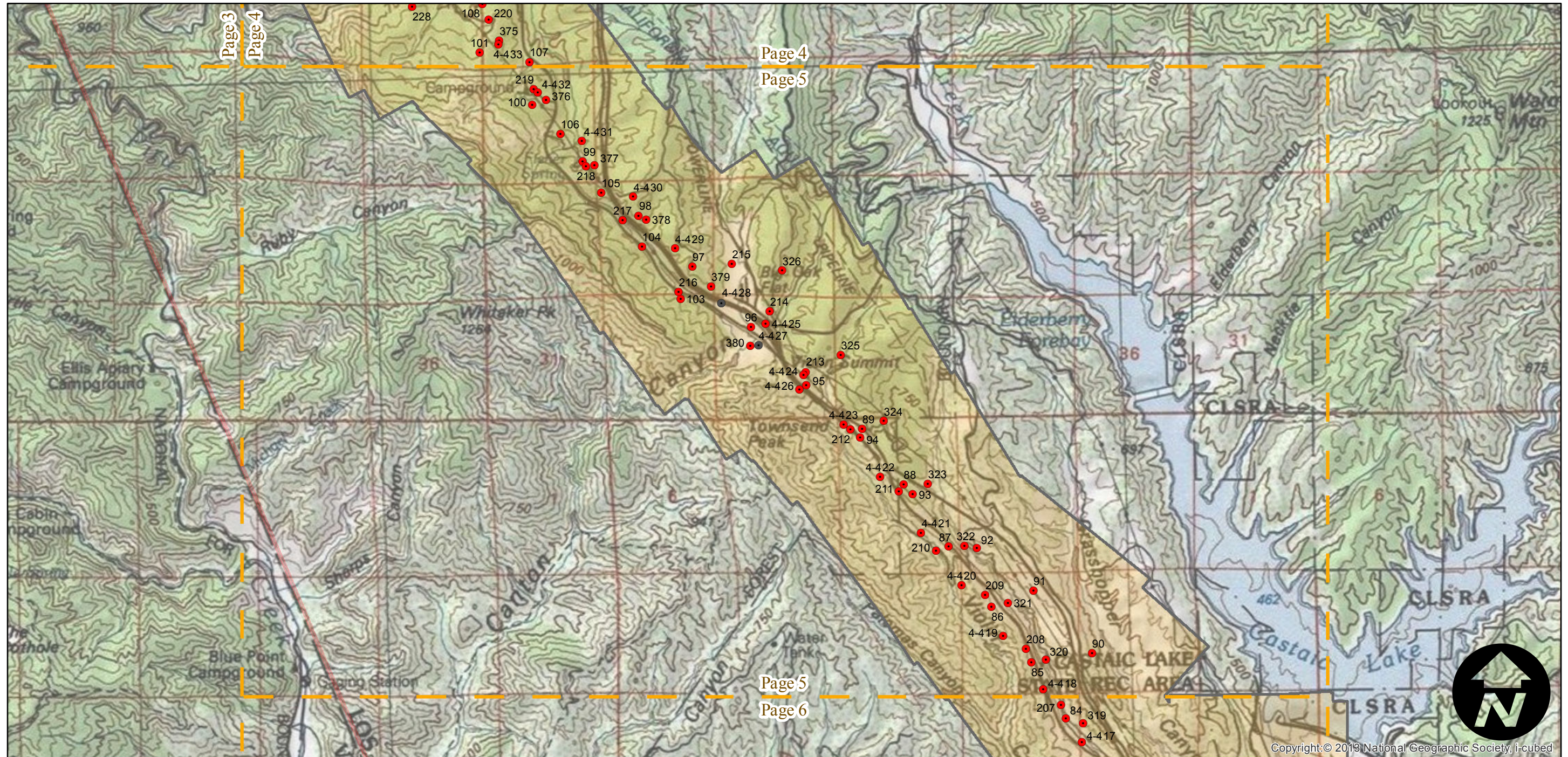
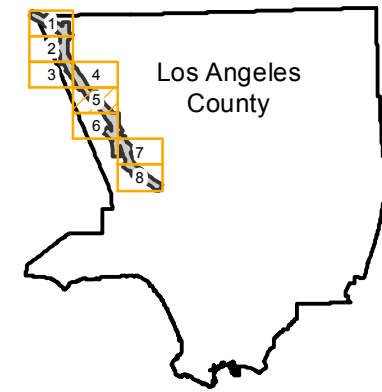
Counties: Los Angeles
Flight date(s): 01-09-1946 to 02-01-1946
Scale: 1:9,600
Overlap: 60%

Complete Metadata:
<http://www.library.ucsb.edu/mil/aerial-photography-tools>

Note: Highway 99/Ridge Route (present-day Interstate 5, The Old Road and San Fernando Road) from Sylmar to Tejon Pass. Overlap within flightlines is not consistent. Imagery acquired January 2013.

- MIL owns frame
- MIL does not own frame

FLIGHT LOCATION



0 1 2 4 Miles

Index to Aerial Photography
Page 5 of 8

Scale of this index: 1:55,000

Copyright: © 2013 National Geographic Society, i-cubed

C-10020

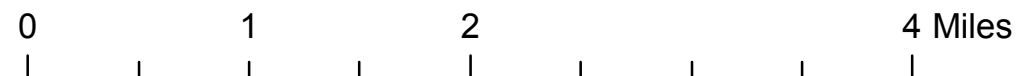
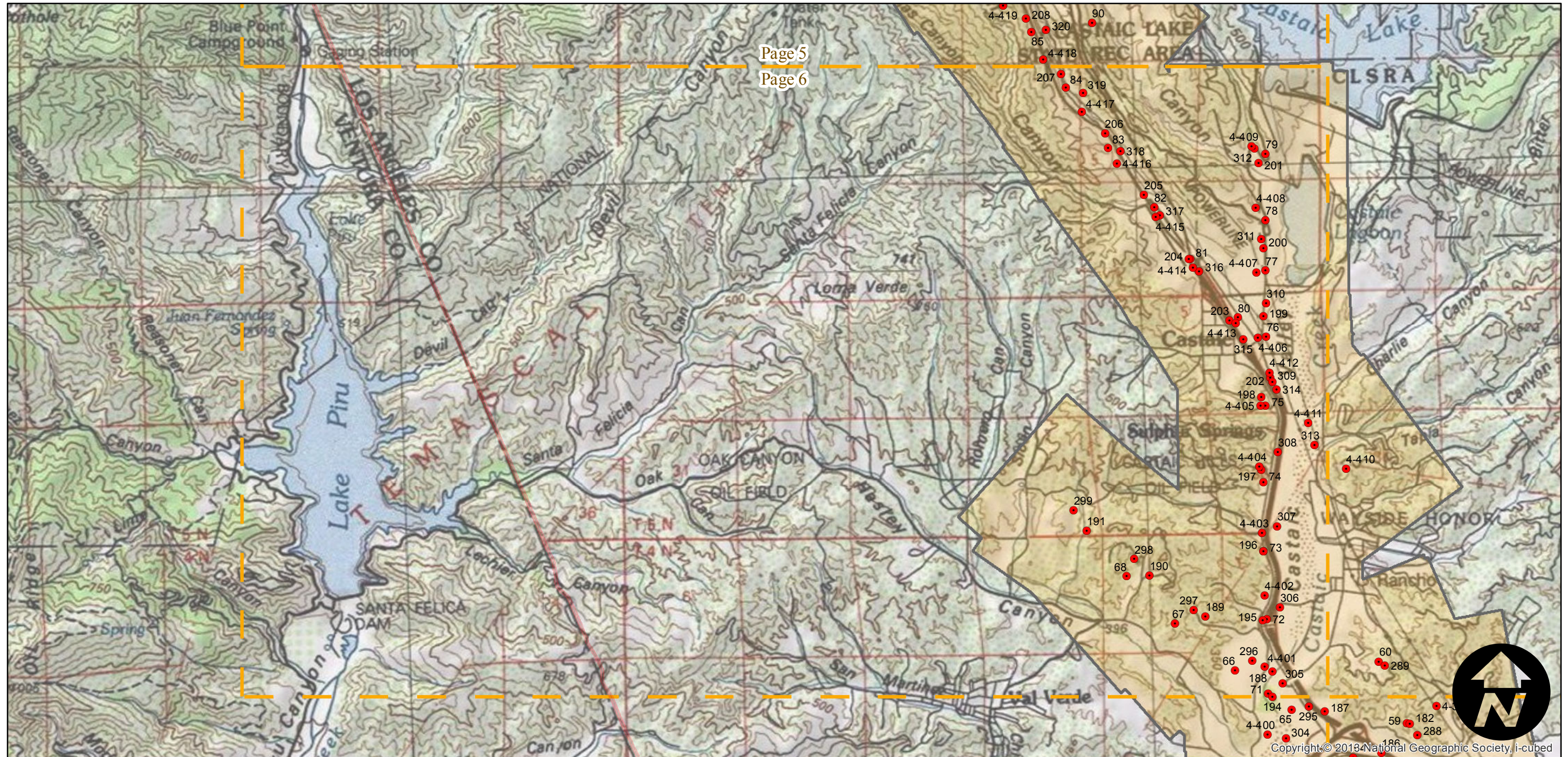
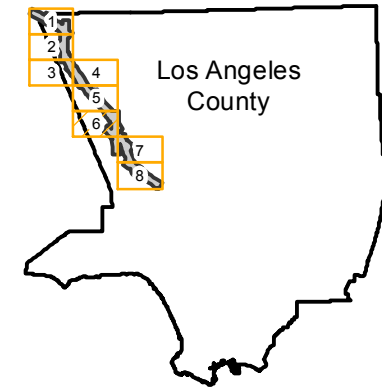
Counties: Los Angeles
Flight date(s): 01-09-1946 to 02-01-1946
Scale: 1:9,600
Overlap: 60%

Complete Metadata:
<http://www.library.ucsb.edu/mil/aerial-photography-tools>

Note: Highway 99/Ridge Route (present-day Interstate 5, The Old Road and San Fernando Road) from Sylmar to Tejon Pass. Overlap within flightlines is not consistent. Imagery acquired January 2013.

- MIL owns frame
- MIL does not own frame

FLIGHT LOCATION



C-10020

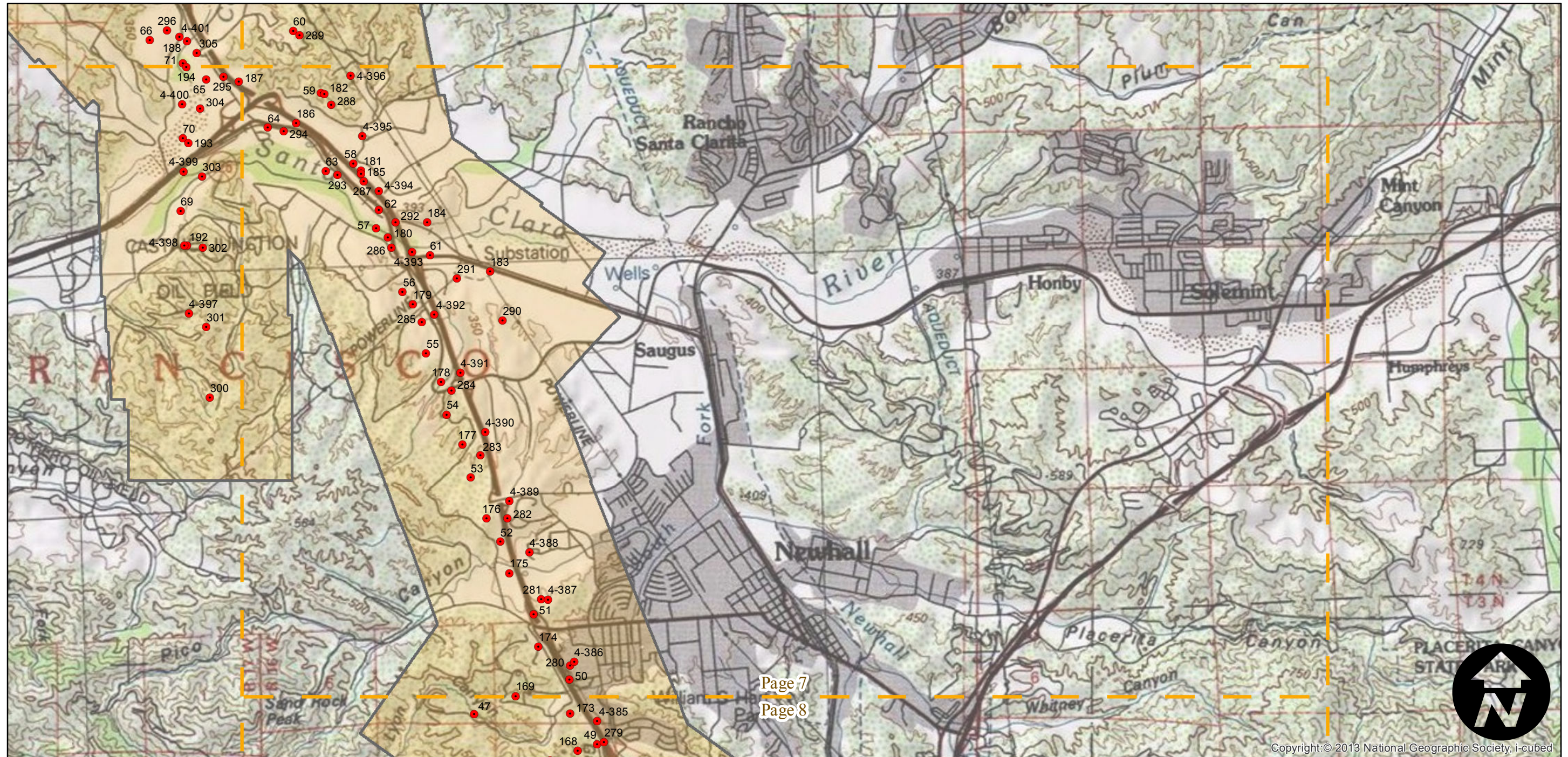
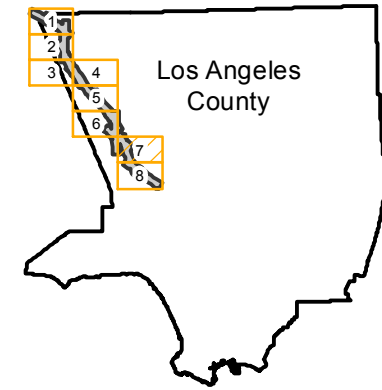
Counties: Los Angeles
Flight date(s): 01-09-1946 to 02-01-1946
Scale: 1:9,600
Overlap: 60%

Complete Metadata:
<http://www.library.ucsb.edu/mil/aerial-photography-tools>

Note: Highway 99/Ridge Route (present-day Interstate 5, The Old Road and San Fernando Road) from Sylmar to Tejon Pass. Overlap within flightlines is not consistent. Imagery acquired January 2013.

- MIL owns frame
- MIL does not own frame

FLIGHT LOCATION



Page 7
Page 8

Copyright: © 2013 National Geographic Society, i-cubed

0 1 2 4 Miles

Index to Aerial Photography
Page 7 of 8

Scale of this index: 1:55,000

