

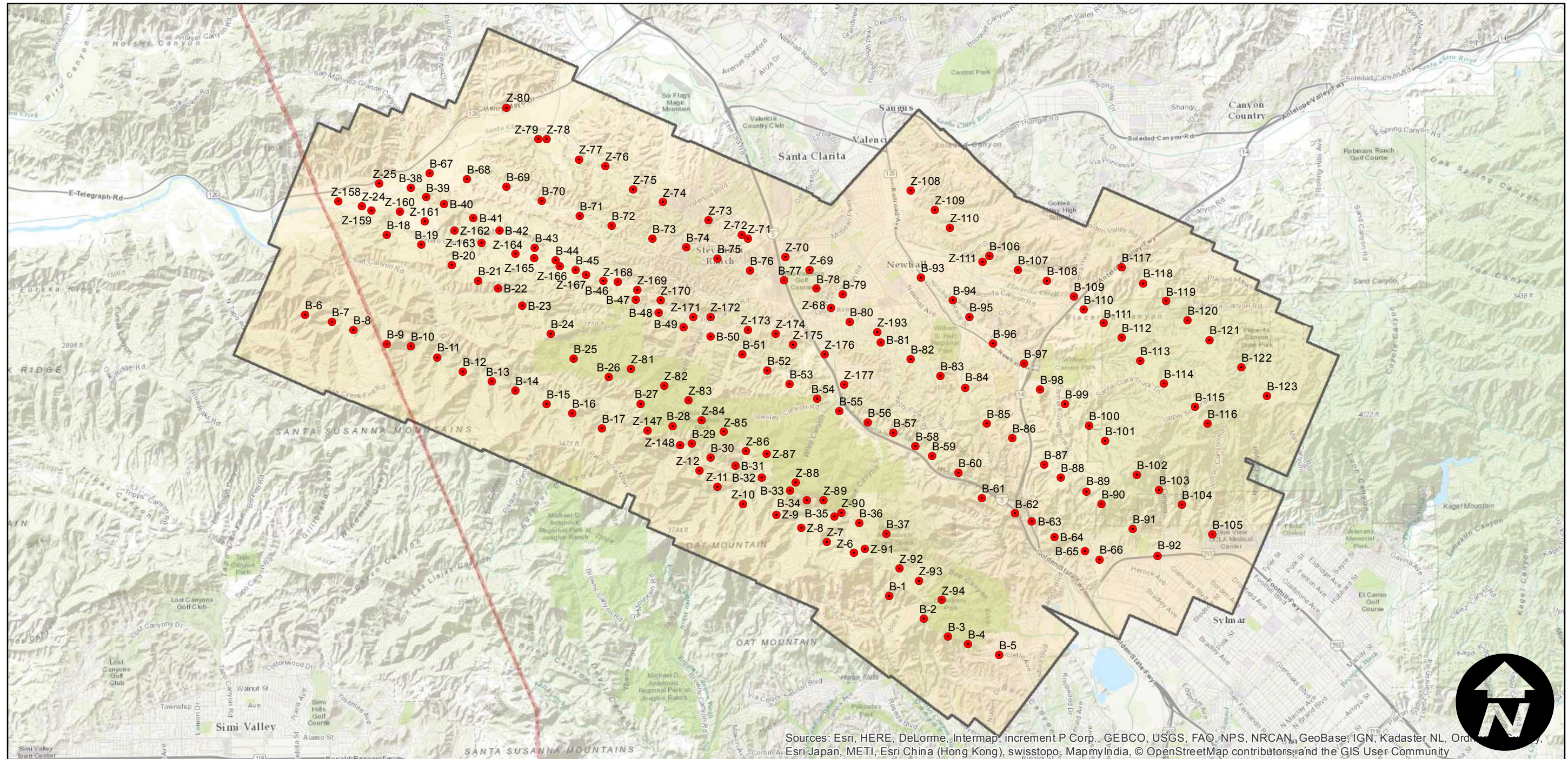
# C-1001B

Counties: Los Angeles  
Flight date(s): 07-18-1930 to 08-25-1930  
Scale: 1:16,800  
Overlap: 60%

Complete Metadata:  
<http://www.library.ucsb.edu/mil/aerial-photography-tools>

Santa Clarita to Sylmar (from Santa Clara River to intersection of Interstate 5 and Interstate 210/Foothill Freeway.) Acquired from Whittier College, January 2013. Nitrate negatives scanned, 2015. Additional nitrate frames held that do not appear on index.

## FLIGHT LOCATION



Sources: Esri, HERE, DeLorme, Intermap, increment P Corp., GEBCO, USGS, FAO, NPS, NRCAN, GeoBase, IGN, Kadaster NL, Ordnance Survey, Esri Japan, METI, Esri China (Hong Kong), swisstopo, MapmyIndia, © OpenStreetMap contributors, and the GIS User Community

