

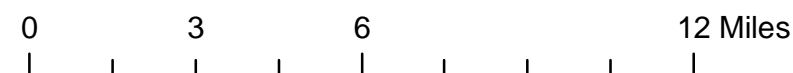
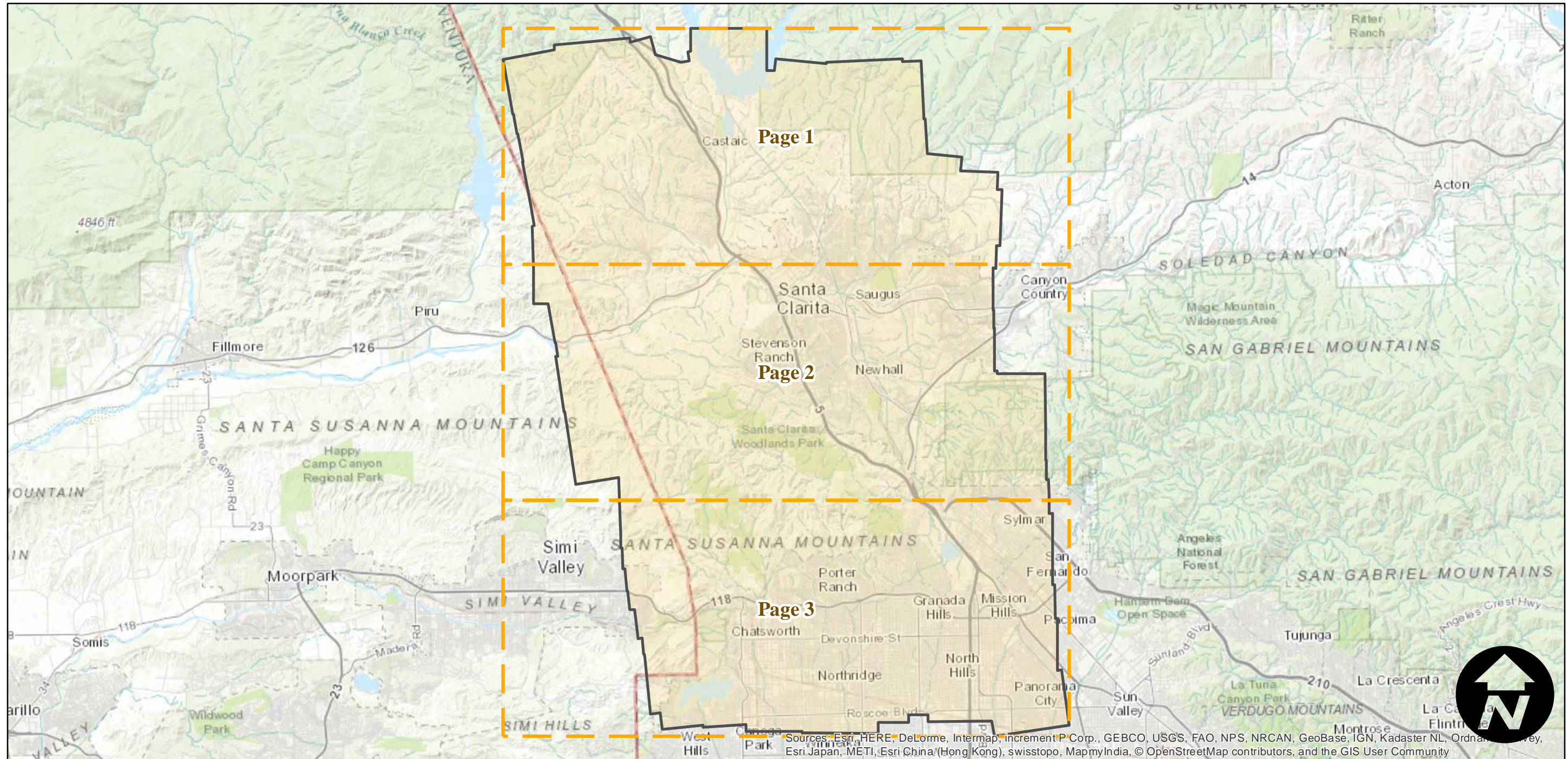
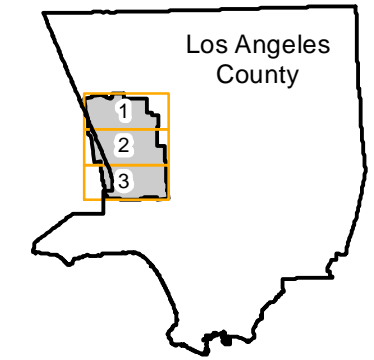
C-1001A

Counties: Los Angeles
Flight date(s): 07-18-1930 to 08-25-1930
Scale: 1:18,000
Overlap: 60%

Complete Metadata:
<http://www.library.ucsb.edu/mil/aerial-photography-tools>

Note: Granada Hills and Chatsworth to Castaic. Copy negatives acquired 1986 were made from original nitrate film. Nitrate film and prints acquired from Whittier College, January 2013. Additional 31 nitrate frames held that do not appear on index.

FLIGHT LOCATION



Index to Aerial Photography
Page Key

Scale of this index: 1:220,000



Sources: Esri, HERE, DeLorme, Intermap, increment P Corp., GEBCO, USGS, FAO, NPS, NRCAN, GeoBase, IGN, Kadaster NL, Ordnance Survey, Esri Japan, METI, Esri China (Hong Kong), swisstopo, MapmyIndia, © OpenStreetMap contributors, and the GIS User Community

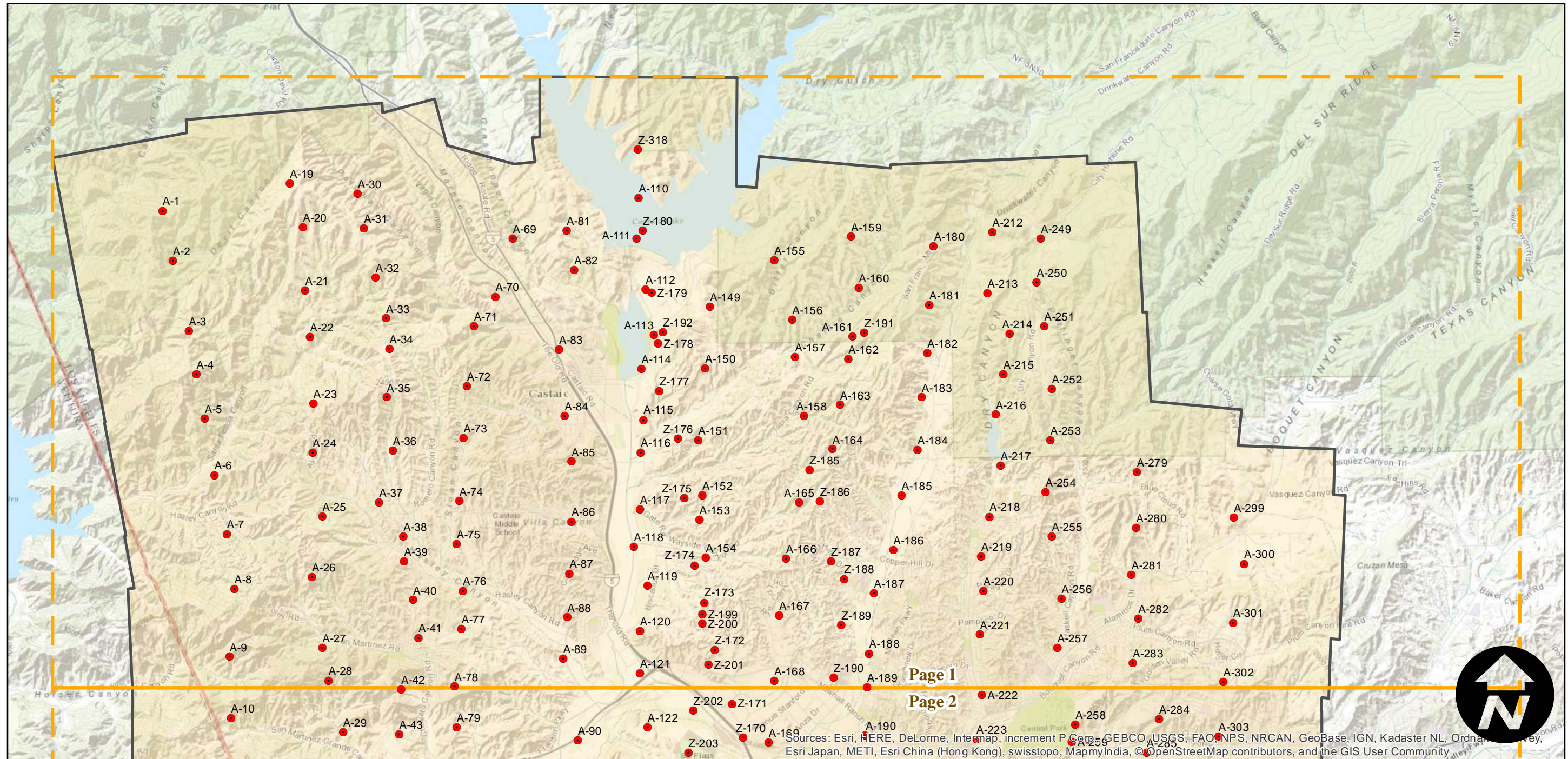
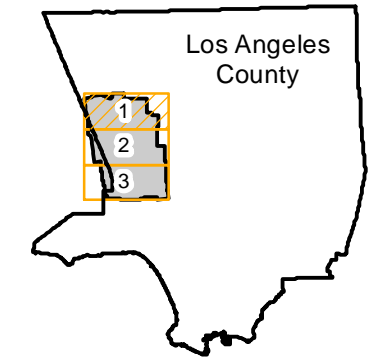
C-1001A

Counties: Los Angeles
Flight date(s): 07-18-1930 to 08-25-1930
Scale: 1:18,000
Overlap: 60%

Complete Metadata:
<http://www.library.ucsb.edu/mil/aerial-photography-tools>

Note: Granada Hills and Chatsworth to Castaic. Copy negatives acquired 1986 were made from original nitrate film. Nitrate film and prints acquired from Whittier College, January 2013. Additional 31 nitrate frames held that do not appear on index.

FLIGHT LOCATION



0 1 2 4 Miles

Index to Aerial Photography
Page 1 of 3

Scale of this index: 1:85,000

Sources: Esri, HERE, DeLorme, Intermap, increment P Corp., GEBCO, USGS, FAO, NPS, NRCAN, GeoBase, IGN, Kadaster NL, Ordnance Survey, Esri Japan, METI, Esri China (Hong Kong), swisstopo, MapmyIndia, © OpenStreetMap contributors, and the GIS User Community

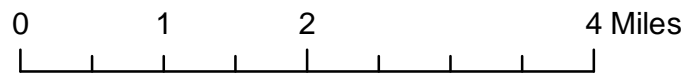
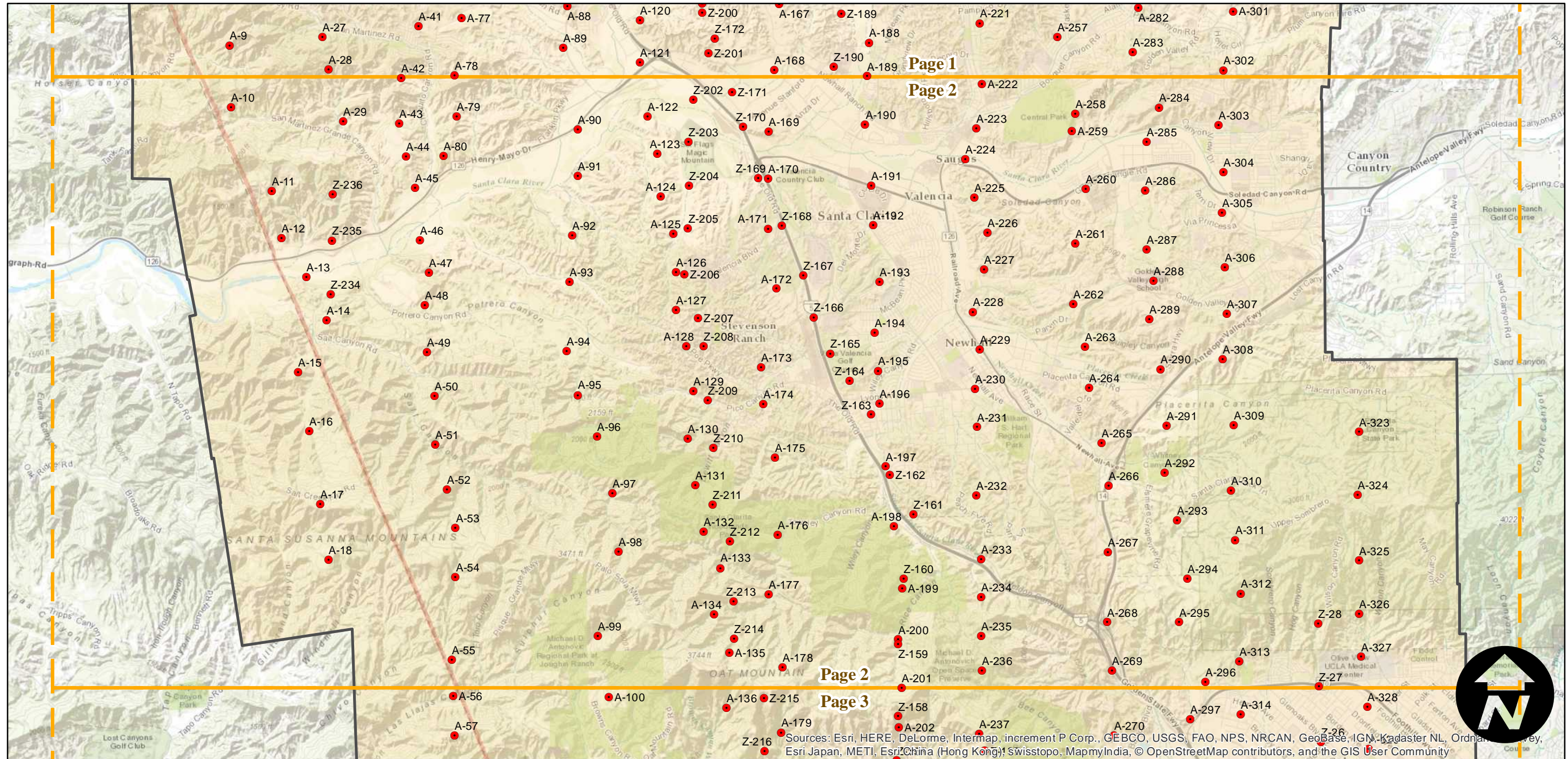
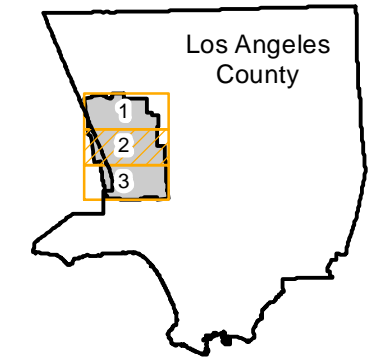
C-1001A

Counties: Los Angeles
Flight date(s): 07-18-1930 to 08-25-1930
Scale: 1:18,000
Overlap: 60%

Complete Metadata:
<http://www.library.ucsb.edu/mil/aerial-photography-tools>

Note: Granada Hills and Chatsworth to Castaic. Copy negatives acquired 1986 were made from original nitrate film. Nitrate film and prints acquired from Whittier College, January 2013. Additional 31 nitrate frames held that do not appear on index.

FLIGHT LOCATION



Sources: Esri, HERE, DeLorme, Intermap, increment P Corp., GEBCO, USGS, FAO, NPS, NRCAN, GeoBase, IGN, Kadaster NL, Ordnance Survey, Esri Japan, METI, Esri China (Hong Kong), Swisstopo, MapmyIndia, © OpenStreetMap contributors, and the GIS User Community

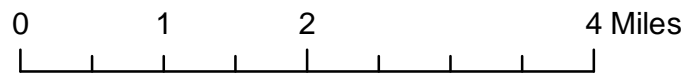
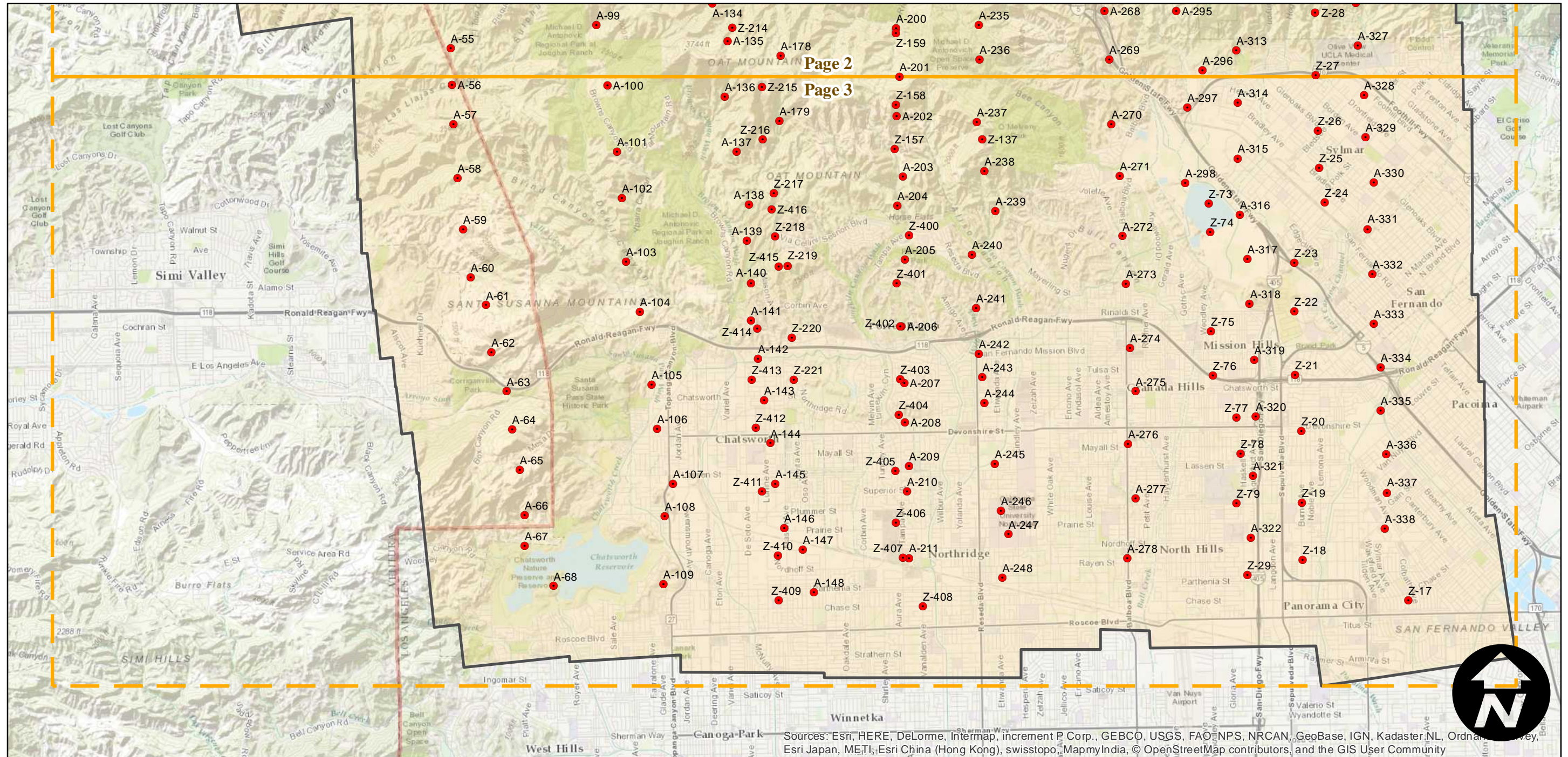
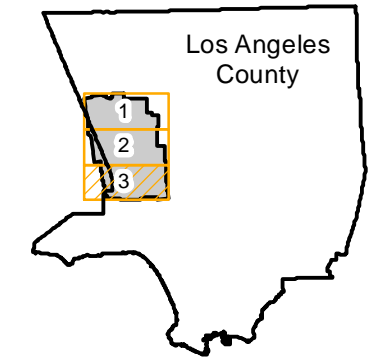
C-1001A

Counties: Los Angeles
Flight date(s): 07-18-1930 to 08-25-1930
Scale: 1:18,000
Overlap: 60%

Complete Metadata:
<http://www.library.ucsb.edu/mil/aerial-photography-tools>

Note: Granada Hills and Chatsworth to Castaic. Copy negatives acquired 1986 were made from original nitrate film. Nitrate film and prints acquired from Whittier College, January 2013. Additional 31 nitrate frames held that do not appear on index.

FLIGHT LOCATION



Sources: Esri, HERE, DeLorme, Intermap, increment P Corp., GEBCO, USGS, FAO, NPS, NRCAN, GeoBase, IGN, Kadaster, NL, Ordnance Survey, Esri Japan, METI, Esri China (Hong Kong), swisstopo, MapmyIndia, © OpenStreetMap contributors, and the GIS User Community