

BUU-1940

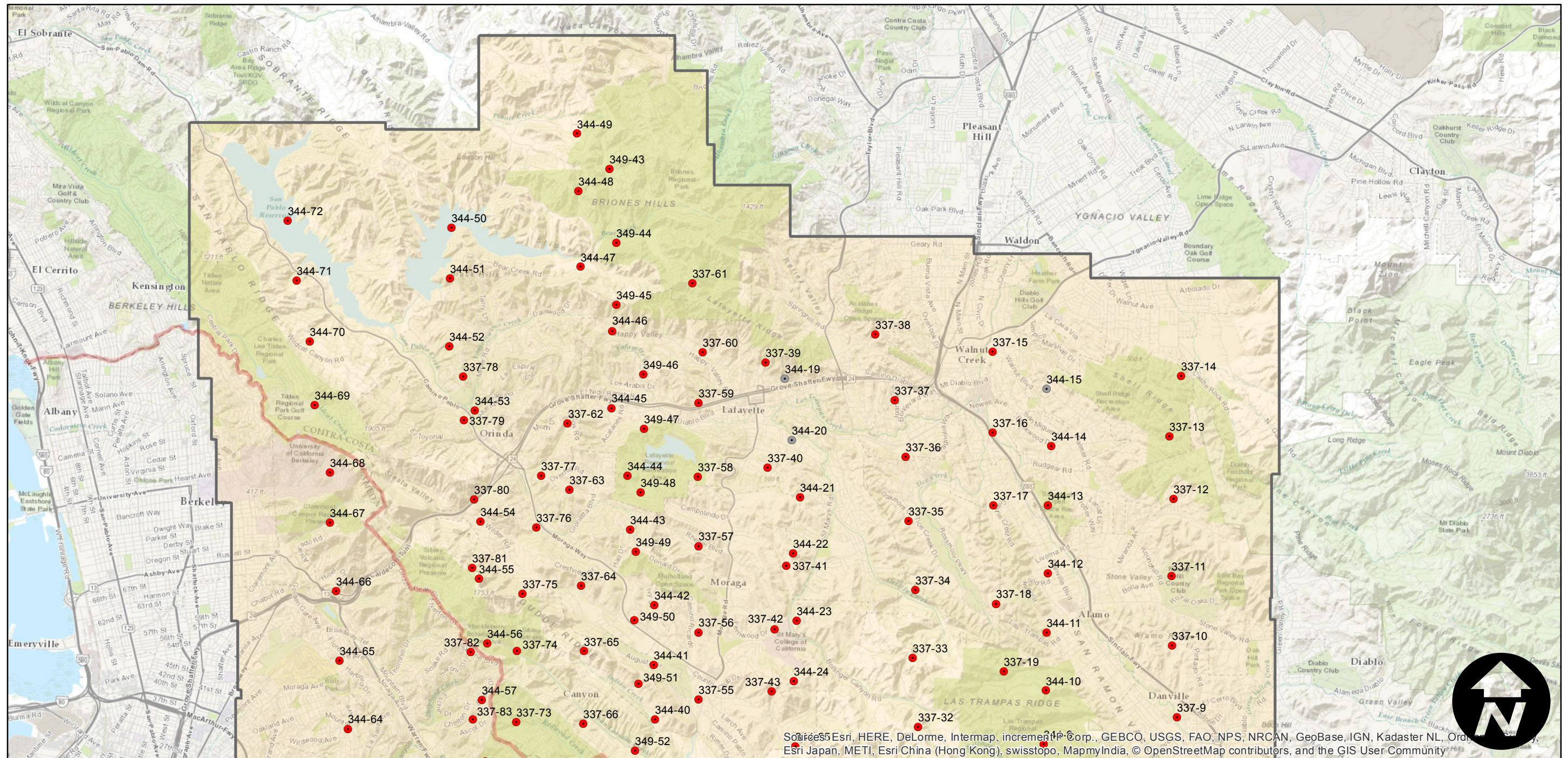
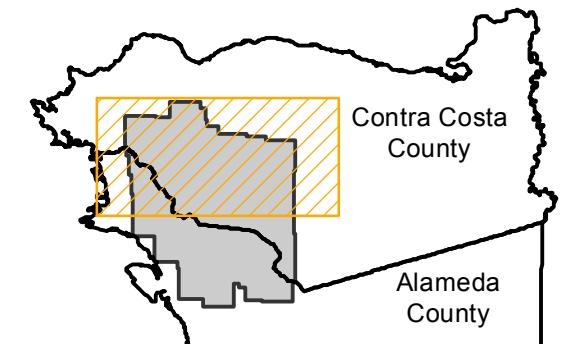
Counties: Contra Costa, Alameda
 Flight date(s): 01-01-1940 to 06-14-1940
 Scale: 1:20,000
 Overlap: 60%

Complete Metadata:
<http://www.library.ucsb.edu/mil/aerial-photography-information>

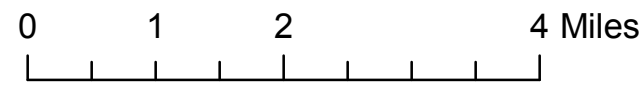
Note: Portions of Contra Costa and Alameda counties from San Pablo Reservoir to Ashland. Areas covered include UC Berkeley, Lafayette, Walnut Creek, Danville, Piedmont, eastern part of Oakland, and San Leandro. Imagery from flight C-6500 incorporated into this flight.

- MIL owns frame
- MIL does not own frame

FLIGHT LOCATION



Sources: Esri, HERE, DeLorme, Intermap, increment P Corp., GEBCO, USGS, FAO, NPS, NRCAN, GeoBase, IGN, Kadaster NL, Ordnance Survey, Esri Japan, METI, Esri China (Hong Kong), swisstopo, MapmyIndia, © OpenStreetMap contributors, and the GIS User Community



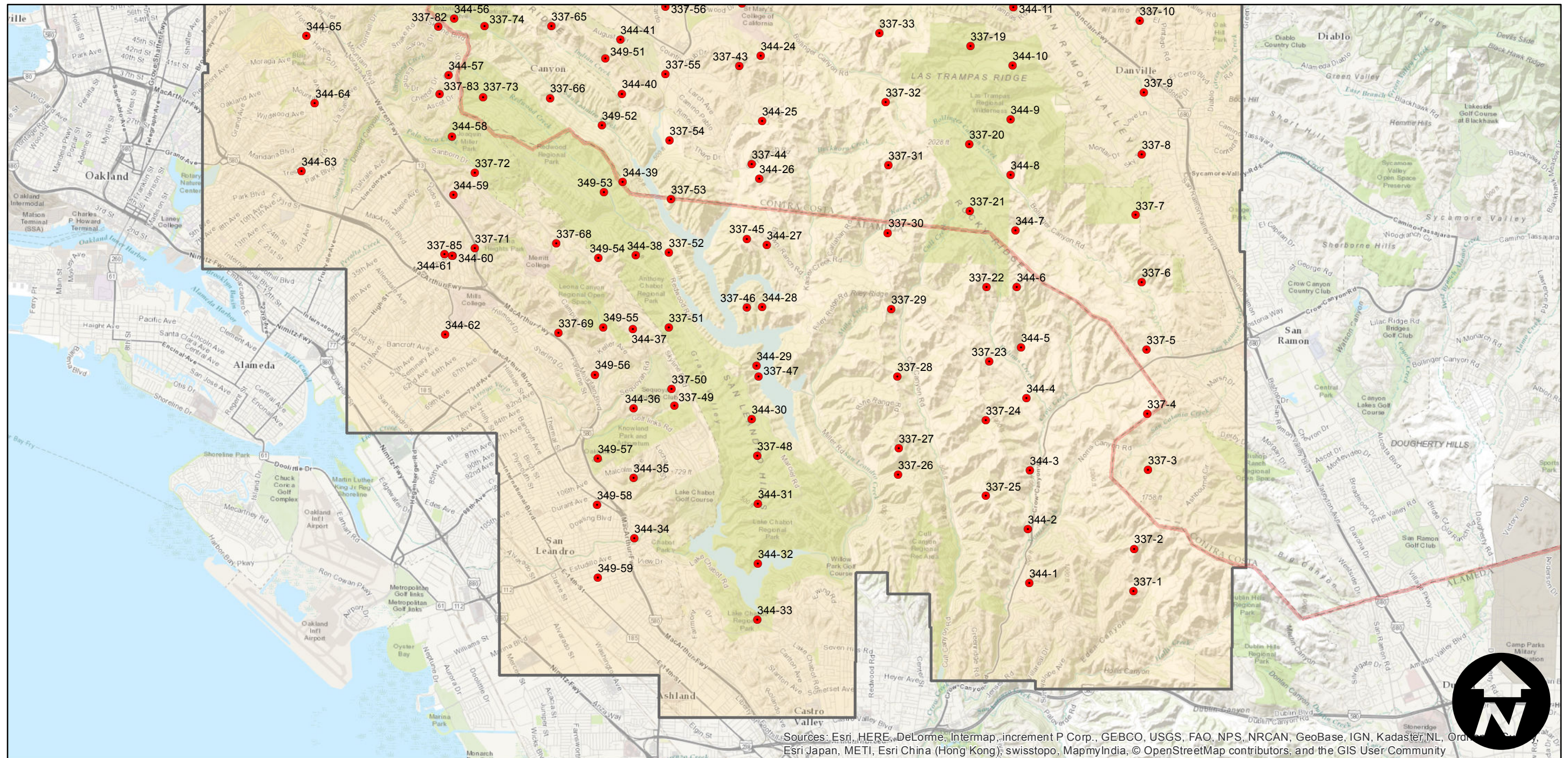
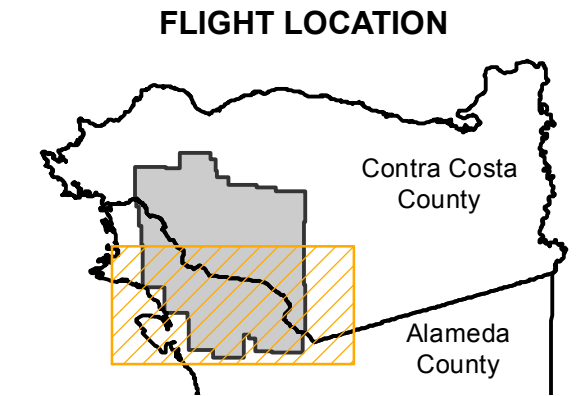
BUU-1940

Counties: Contra Costa, Alameda
 Flight date(s): 01-01-1940 to 06-14-1940
 Scale: 1:20,000
 Overlap: 60%

Complete Metadata:
<http://www.library.ucsb.edu/mil/aerial-photography-information>

Note: Portions of Contra Costa and Alameda counties from San Pablo Reservoir to Ashland. Areas covered include UC Berkeley, Lafayette, Walnut Creek, Danville, Piedmont, eastern part of Oakland, and San Leandro. Imagery from flight C-6500 incorporated into this flight.

- MIL owns frame
- MIL does not own frame



Sources: Esri, HERE, DeLorme, Intermap, increment P Corp., GEBCO, USGS, FAO, NPS, NRCAN, GeoBase, IGN, Kadaster, NL, Ordnance Survey, Esri Japan, METI, Esri China (Hong Kong), swisstopo, MapmyIndia, © OpenStreetMap contributors, and the GIS User Community

