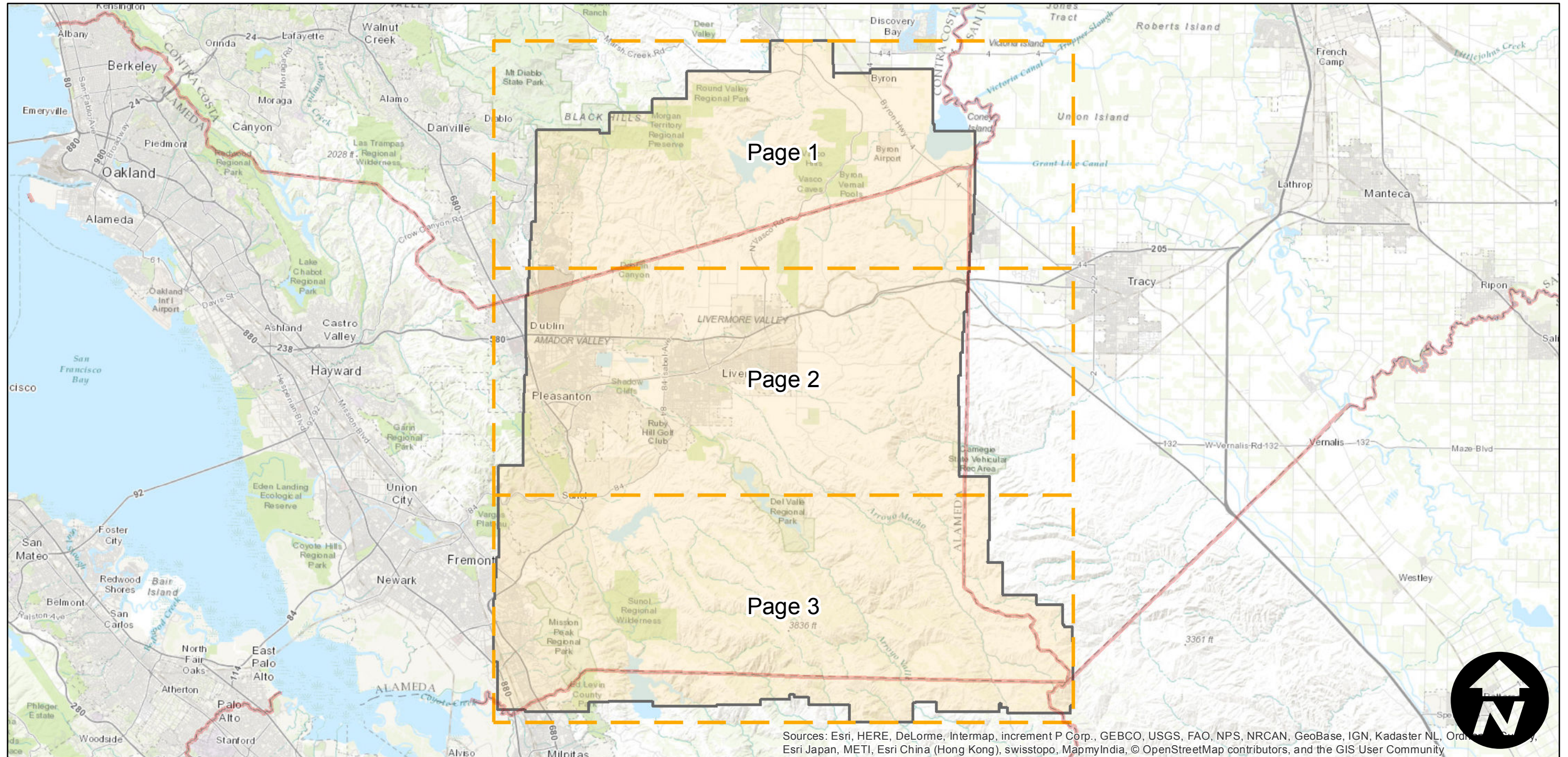
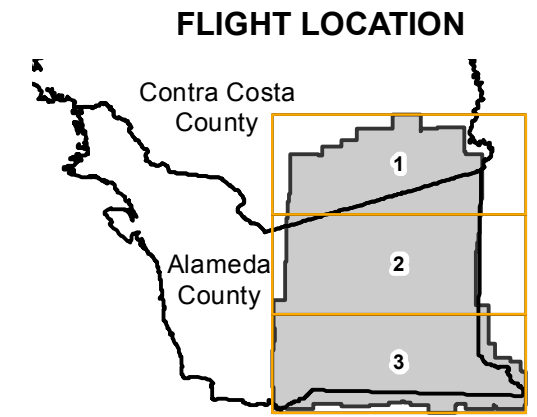


BUT-1940

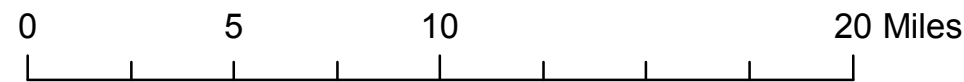
Counties: Alameda, Contra Costa
Flight date(s): 01-01-1940 to 06-18-1940
Scale: 1:20,000
Overlap: 60%

Complete Metadata:
<http://www.library.ucsb.edu/mil/aerial-photography-information>

Note: Eastern portion of Alameda county. Areas covered include Byron, Los Vaqueros Reservoir, Livermore, Pleasanton, Livermore, Sunol Valley, and Curtner. Coverage extends into Contra Costa county. Frames from flight C-6500 incorporated into this flight.



Sources: Esri, HERE, DeLorme, Intermap, increment P Corp., GEBCO, USGS, FAO, NPS, NRCAN, GeoBase, IGN, Kadaster NL, Ordnance Survey, Esri Japan, METI, Esri China (Hong Kong), swisstopo, MapmyIndia, © OpenStreetMap contributors, and the GIS User Community



Index to Aerial Photography
Page Key

Scale of this index: 1:295,000

BUT-1940

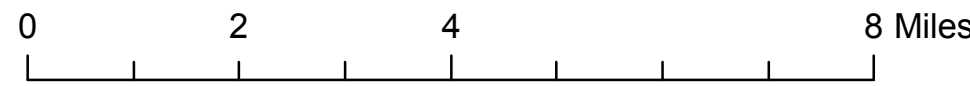
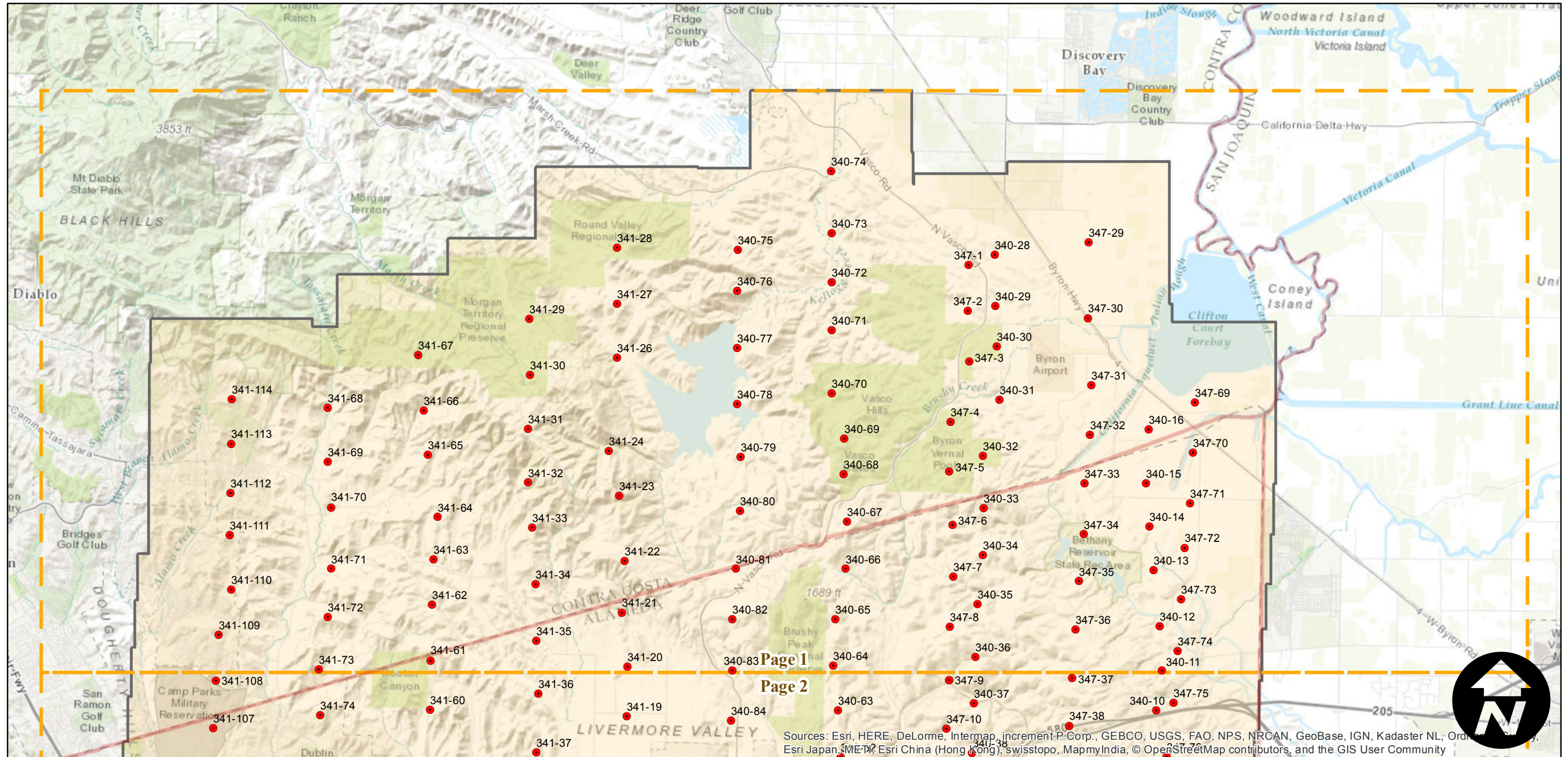
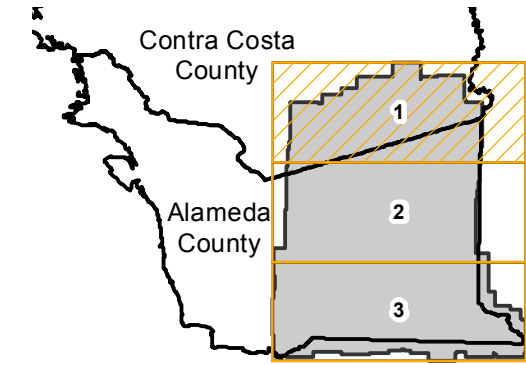
Counties: Alameda, Contra Costa
 Flight date(s): 01-01-1940 to 06-18-1940
 Scale: 1:20,000
 Overlap: 60%

Complete Metadata:
<http://www.library.ucsb.edu/mil/aerial-photography-information>

Note: Eastern portion of Alameda county. Areas covered include Byron, Los Vaqueros Reservoir, Livermore, Pleasanton, Livermore, Sunol Valley, and Curtner. Coverage extends into Contra Costa county. Frames from flight C-6500 incorporated into this flight.

- MIL owns frame
- MIL does not own frame

FLIGHT LOCATION



Index to Aerial Photography
 Page 1 of 3

Scale of this index: 1:115,000

Sources: Esri, HERE, DeLorme, Intermap, increment P Corp., GEBCO, USGS, FAO, NPS, NRCAN, GeoBase, IGN, Kadaster NL, Ordnance Survey, Esri Japan, METI, Esri China (Hong Kong), Swisstopo, MapmyIndia, © OpenStreetMap contributors, and the GIS User Community

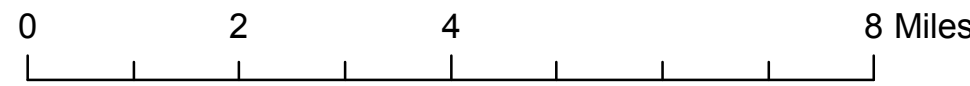
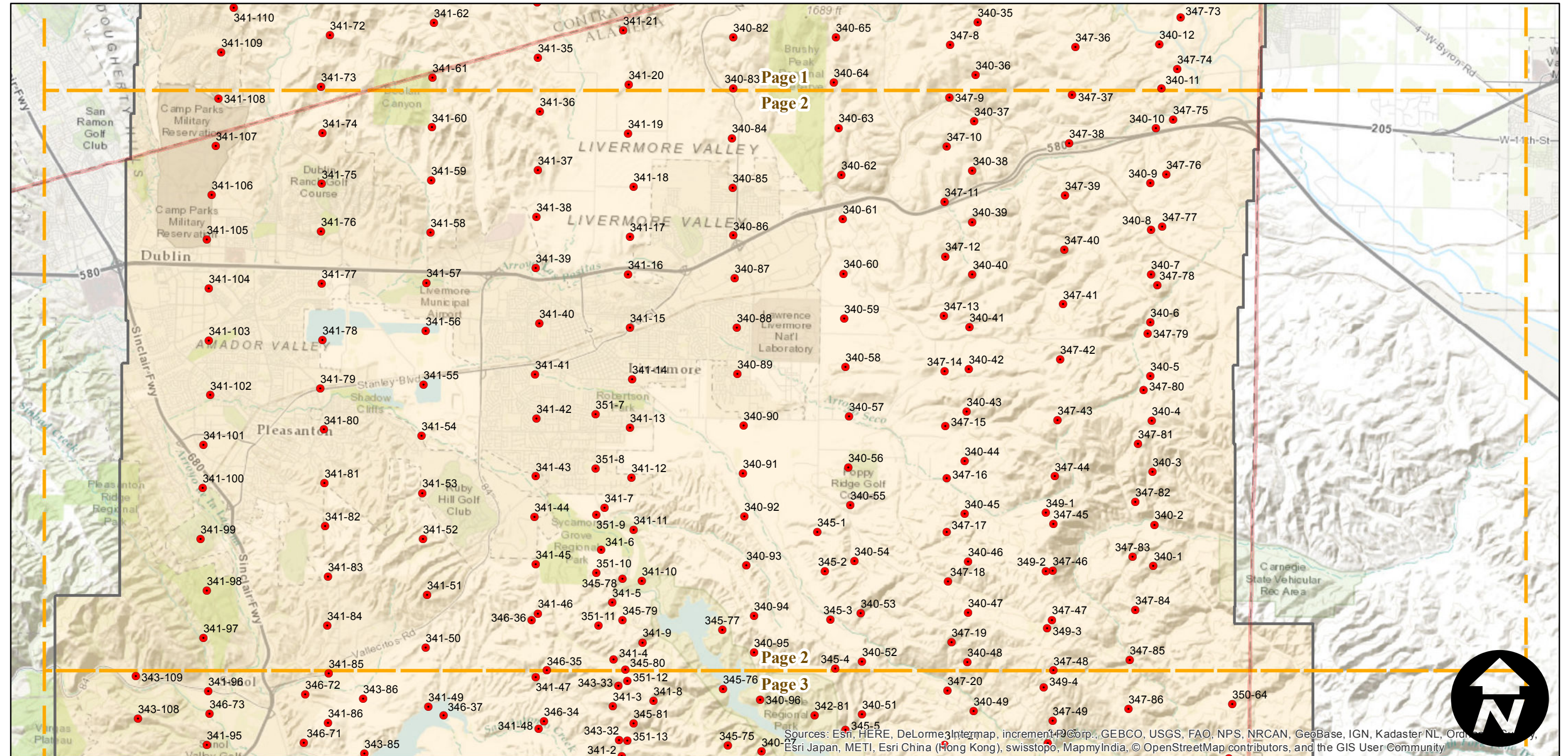
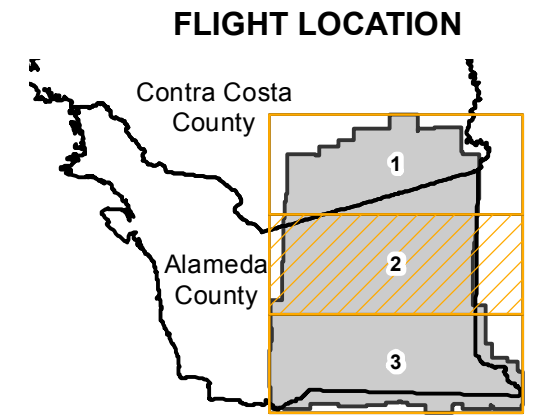
BUT-1940

Counties: Alameda, Contra Costa
 Flight date(s): 01-01-1940 to 06-18-1940
 Scale: 1:20,000
 Overlap: 60%

Complete Metadata:
<http://www.library.ucsb.edu/mil/aerial-photography-information>

Note: Eastern portion of Alameda county. Areas covered include Byron, Los Vaqueros Reservoir, Livermore, Pleasanton, Livermore, Sunol Valley, and Curtner. Coverage extends into Contra Costa county. Frames from flight C-6500 incorporated into this flight.

- MIL owns frame
- MIL does not own frame



Sources: Esri, HERE, DeLorme, Intermap, increment P Corp., GEBCO, USGS, FAO, NPS, NRCAN, GeoBase, IGN, Kadaster NL, Ordnance Survey, Esri Japan, METI, Esri China (Hong Kong), swisstopo, MapmyIndia, © OpenStreetMap contributors, and the GIS User Community

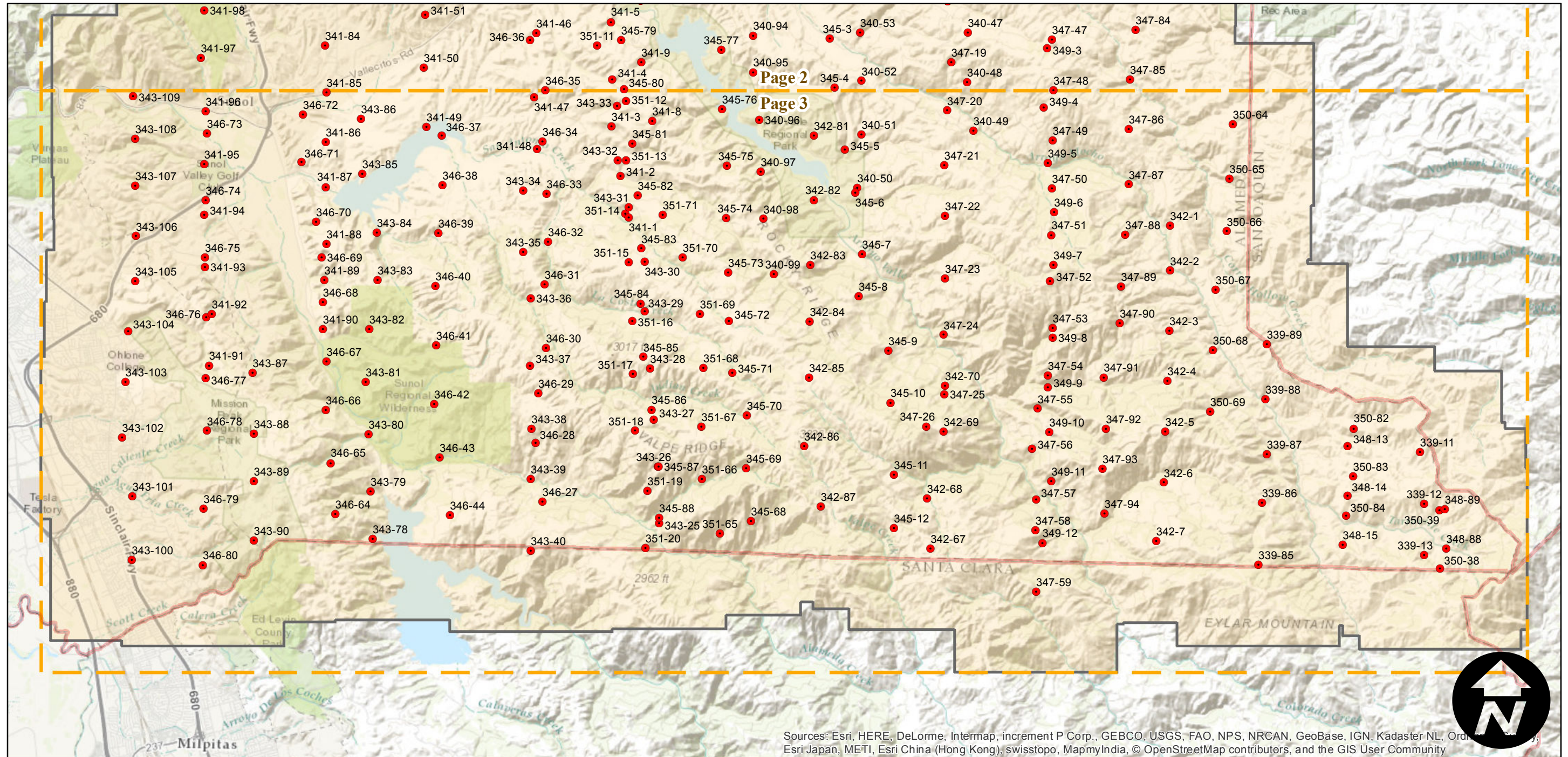
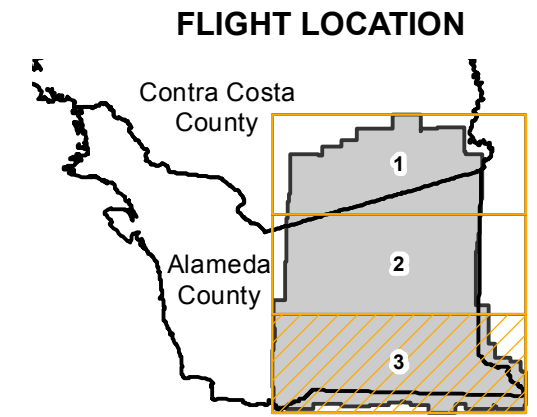
BUT-1940

Counties: Alameda, Contra Costa
 Flight date(s): 01-01-1940 to 06-18-1940
 Scale: 1:20,000
 Overlap: 60%

Complete Metadata:
<http://www.library.ucsb.edu/mil/aerial-photography-information>

Note: Eastern portion of Alameda county. Areas covered include Byron, Los Vaqueros Reservoir, Livermore, Pleasanton, Livermore, Sunol Valley, and Curtner. Coverage extends into Contra Costa county. Frames from flight C-6500 incorporated into this flight.

- MIL owns frame
- MIL does not own frame



Sources: Esri, HERE, DeLorme, Intermap, increment P Corp., GEBCO, USGS, FAO, NPS, NRCAN, GeoBase, IGN, Kadaster NL, Ordnance Survey, Esri Japan, METI, Esri China (Hong Kong), swisstopo, MapmyIndia, © OpenStreetMap contributors, and the GIS User Community

