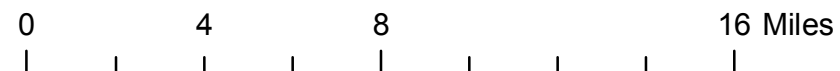
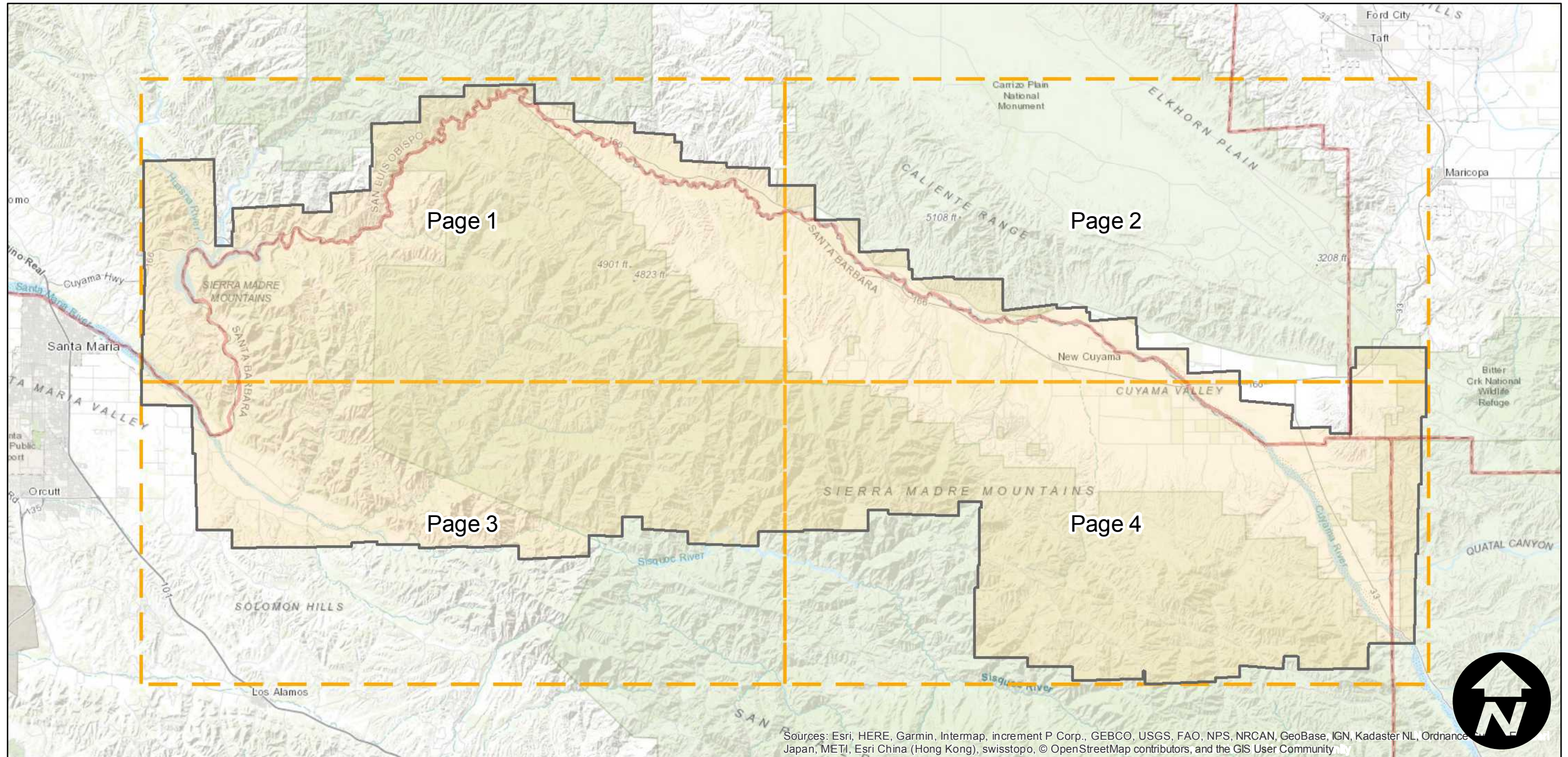
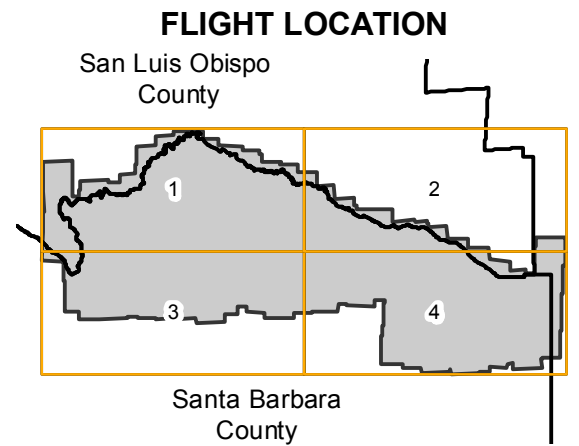


BTM-1950

Counties: Santa Barbara
Flight date(s): 04-02-1950 to 05-18-1950
Scale: 1:7,500
Overlap: 60-80%

Note: Coverage of the Sierra Madre Mountains.
Photographs are enlargements from original scale of
1:20,000. Imagery acquired 2008.

Complete Metadata:
<http://www.library.ucsb.edu/map-imagery-lab/aerial-photography-information>



Index to Aerial Photography
Page Key

Scale of this index: 1:275,000

Sources: Esri, HERE, Garmin, Intermap, increment P Corp., GEBCO, USGS, FAO, NPS, NRCAN, GeoBase, IGN, Kadaster NL, Ordnance Survey, Esri Japan, METI, Esri China (Hong Kong), swisstopo, © OpenStreetMap contributors, and the GIS User Community

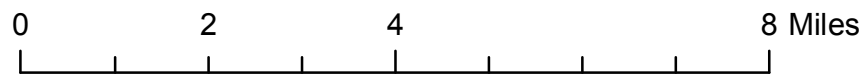
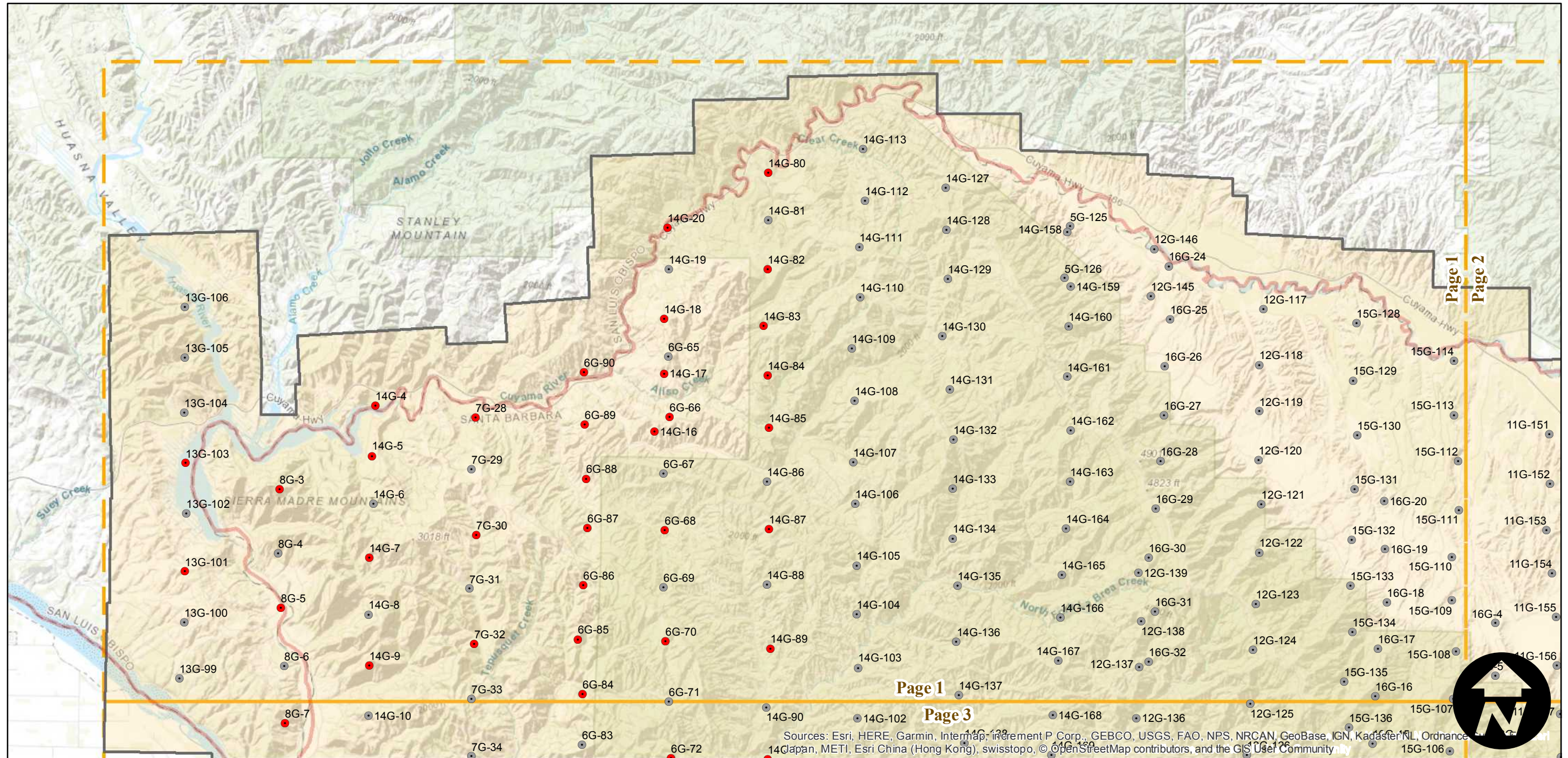
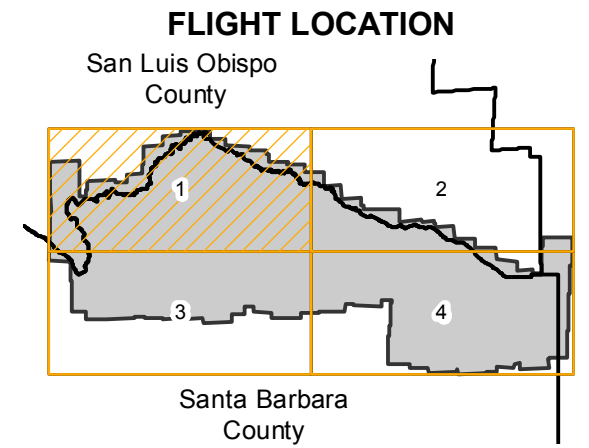
BTM-1950

Counties: Santa Barbara
 Flight date(s): 04-02-1950 to 05-18-1950
 Scale: 1:7,500
 Overlap: 60-80%

Complete Metadata:
<http://www.library.ucsb.edu/map-imagery-lab/aerial-photography-information>

Note: Coverage of the Sierra Madre Mountains.
 Photographs are enlargements from original scale of 1:20,000. Imagery acquired 2008.

- MIL owns frame
- MIL does not own frame



Sources: Esri, HERE, Garmin, Intermap, increment P Corp., GEBCO, USGS, FAO, NPS, NRCAN, GeoBase, IGN, Kadaster NL, Ordnance Survey, Esri Japan, METI, Esri China (Hong Kong), swisstopo, © OpenStreetMap contributors, and the GIS User Community

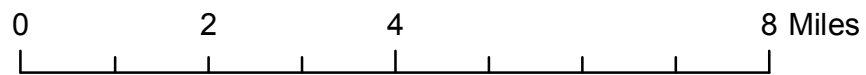
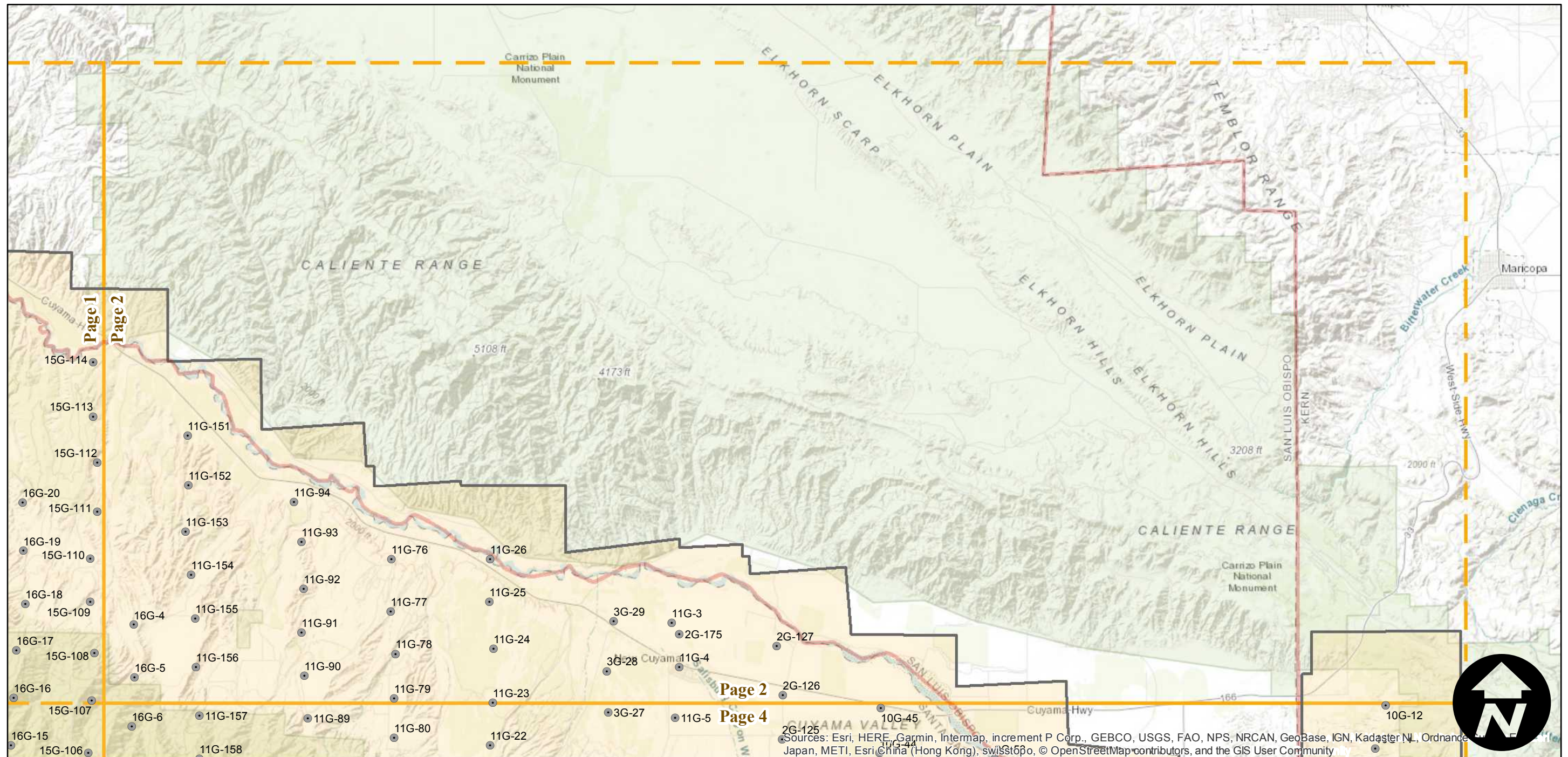
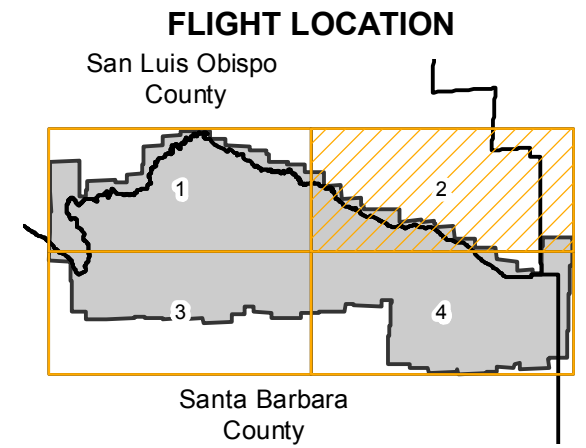
BTM-1950

Counties: Santa Barbara
 Flight date(s): 04-02-1950 to 05-18-1950
 Scale: 1:7,500
 Overlap: 60-80%

Complete Metadata:
<http://www.library.ucsb.edu/map-imagery-lab/aerial-photography-information>

Note: Coverage of the Sierra Madre Mountains. Photographs are enlargements from original scale of 1:20,000. Imagery acquired 2008.

- MIL owns frame
- MIL does not own frame



Sources: Esri, HERE, Garmin, Intermap, increment P Corp., GEBCO, USGS, FAO, NPS, NRCAN, GeoBase, IGN, Kadaster NL, Ordnance Survey, Esri, China (Hong Kong), swisstopo, © OpenStreetMap contributors, and the GIS User Community

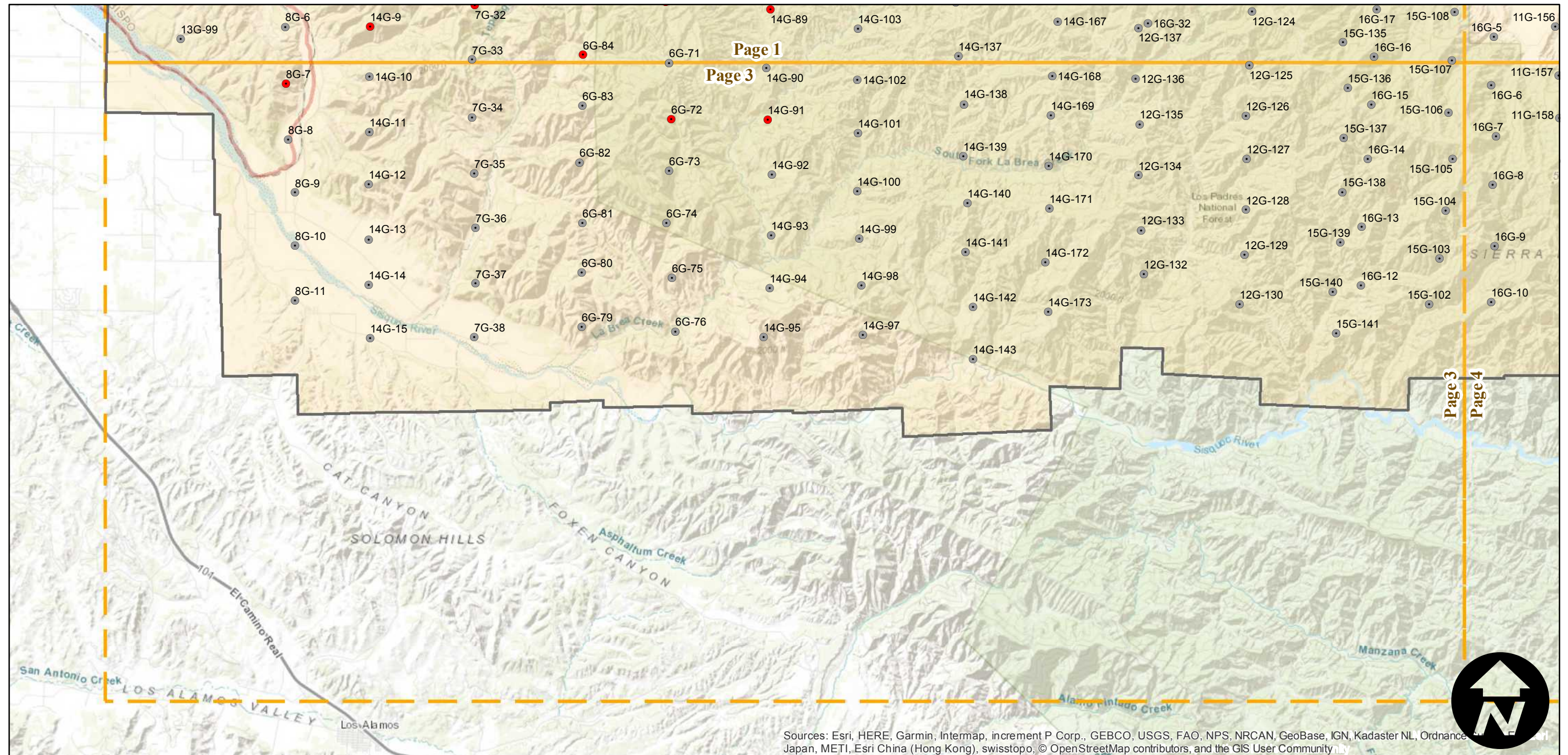
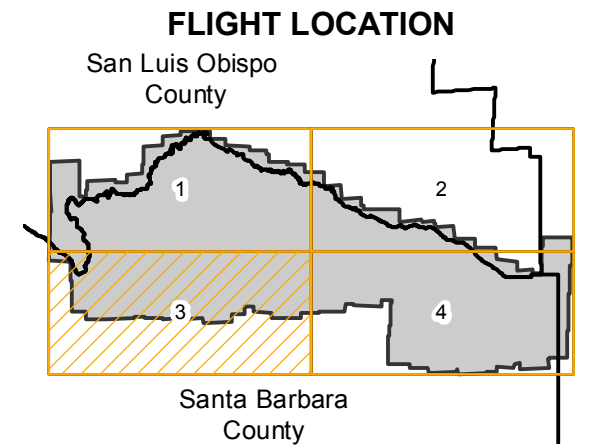
BTM-1950

Counties: Santa Barbara
 Flight date(s): 04-02-1950 to 05-18-1950
 Scale: 1:7,500
 Overlap: 60-80%

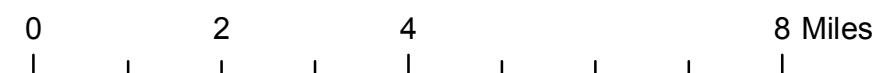
Complete Metadata:
<http://www.library.ucsb.edu/map-imagery-lab/aerial-photography-information>

Note: Coverage of the Sierra Madre Mountains.
 Photographs are enlargements from original scale of 1:20,000. Imagery acquired 2008.

- MIL owns frame
- MIL does not own frame



Sources: Esri, HERE, Garmin, Intermap, increment P Corp., GEBCO, USGS, FAO, NPS, NRCAN, GeoBase, IGN, Kadaster NL, Ordnance Survey, Esri Japan, METI, Esri China (Hong Kong), swisstopo, © OpenStreetMap contributors, and the GIS User Community



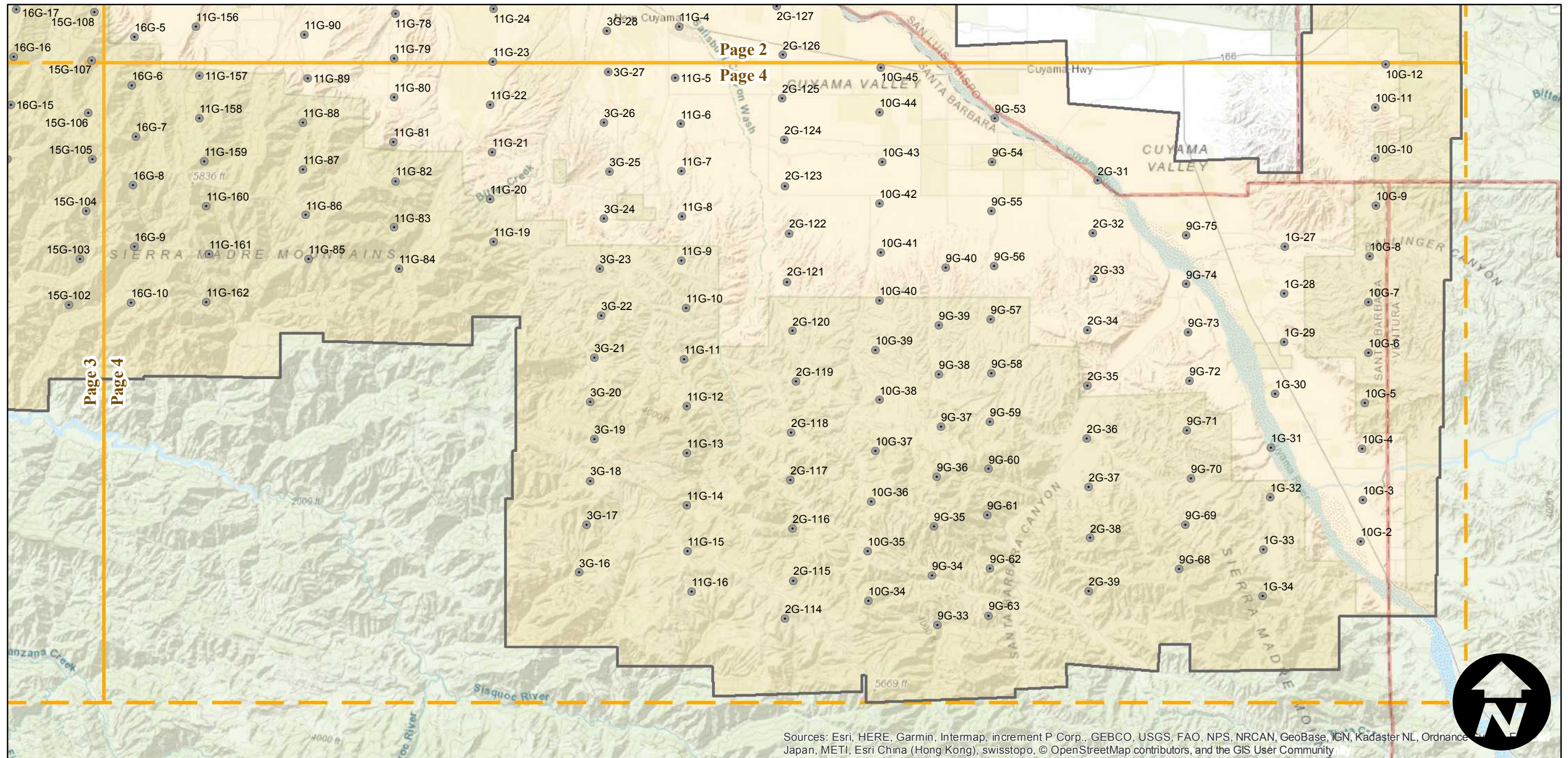
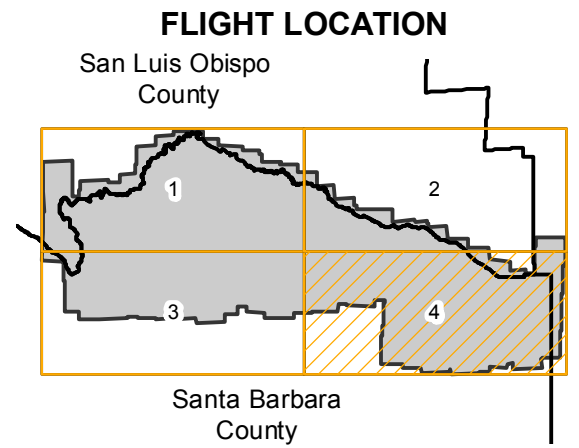
BTM-1950

Counties: Santa Barbara
 Flight date(s): 04-02-1950 to 05-18-1950
 Scale: 1:7,500
 Overlap: 60-80%

Complete Metadata:
<http://www.library.ucsb.edu/map-imagery-lab/aerial-photography-information>

Note: Coverage of the Sierra Madre Mountains.
 Photographs are enlargements from original scale of 1:20,000. Imagery acquired 2008.

- MIL owns frame
- MIL does not own frame



Sources: Esri, HERE, Garmin, Intermap, increment P Corp., GEBCO, USGS, FAO, NPS, NRCAN, GeoBase, IGN, Kadaster NL, Ordnance Survey, Esri Japan, METI, Esri China (Hong Kong), swisstopo, © OpenStreetMap contributors, and the GIS User Community

