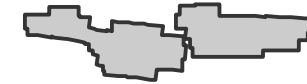
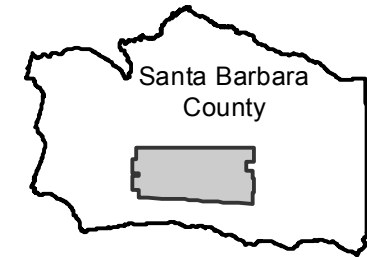


BTM-1940

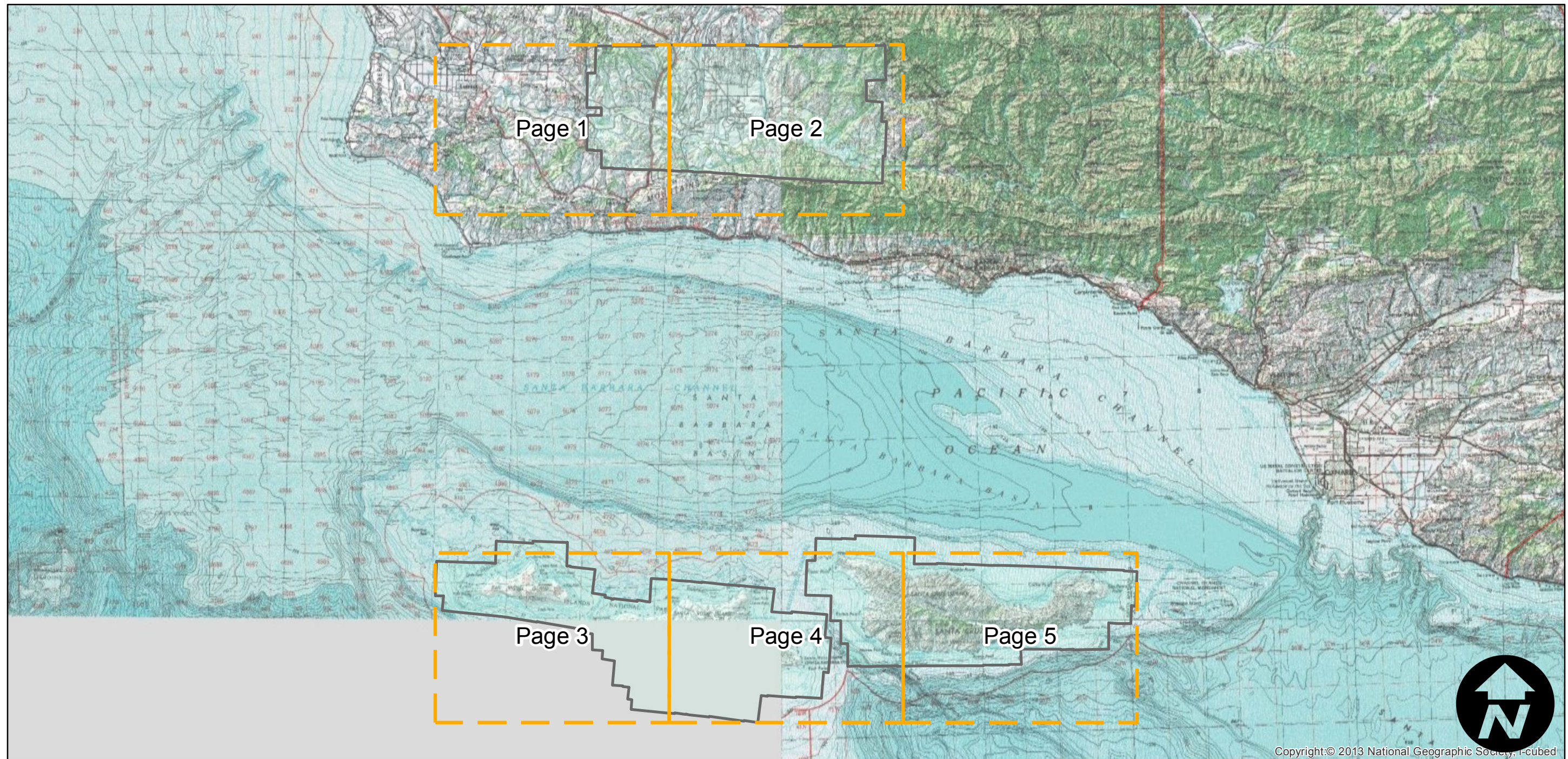
Counties: Santa Barbara
Flight date(s): 01-01-1940 to 12-31-1940
Scale: 1: 20,000
Overlap: 60%

Note: Imagery from Fairchild Aerial Surveys flight C-6500 incorporated into this flight (June 1944). Prints and nitrate negatives acquired from Whittier College, January 2013.

FLIGHT LOCATION



Complete Metadata:
<http://www.library.ucsb.edu/mil/aerial-photography-tools>



0 10 20 40 Miles

Index to Aerial Photography
Page Key

Scale of this index: 1:550,000

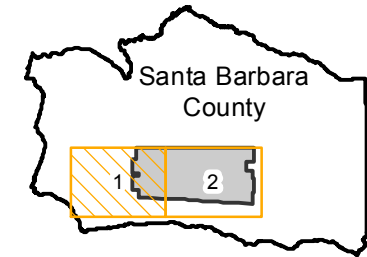
Copyright © 2013 National Geographic Society, i-cubed

BTM-1940

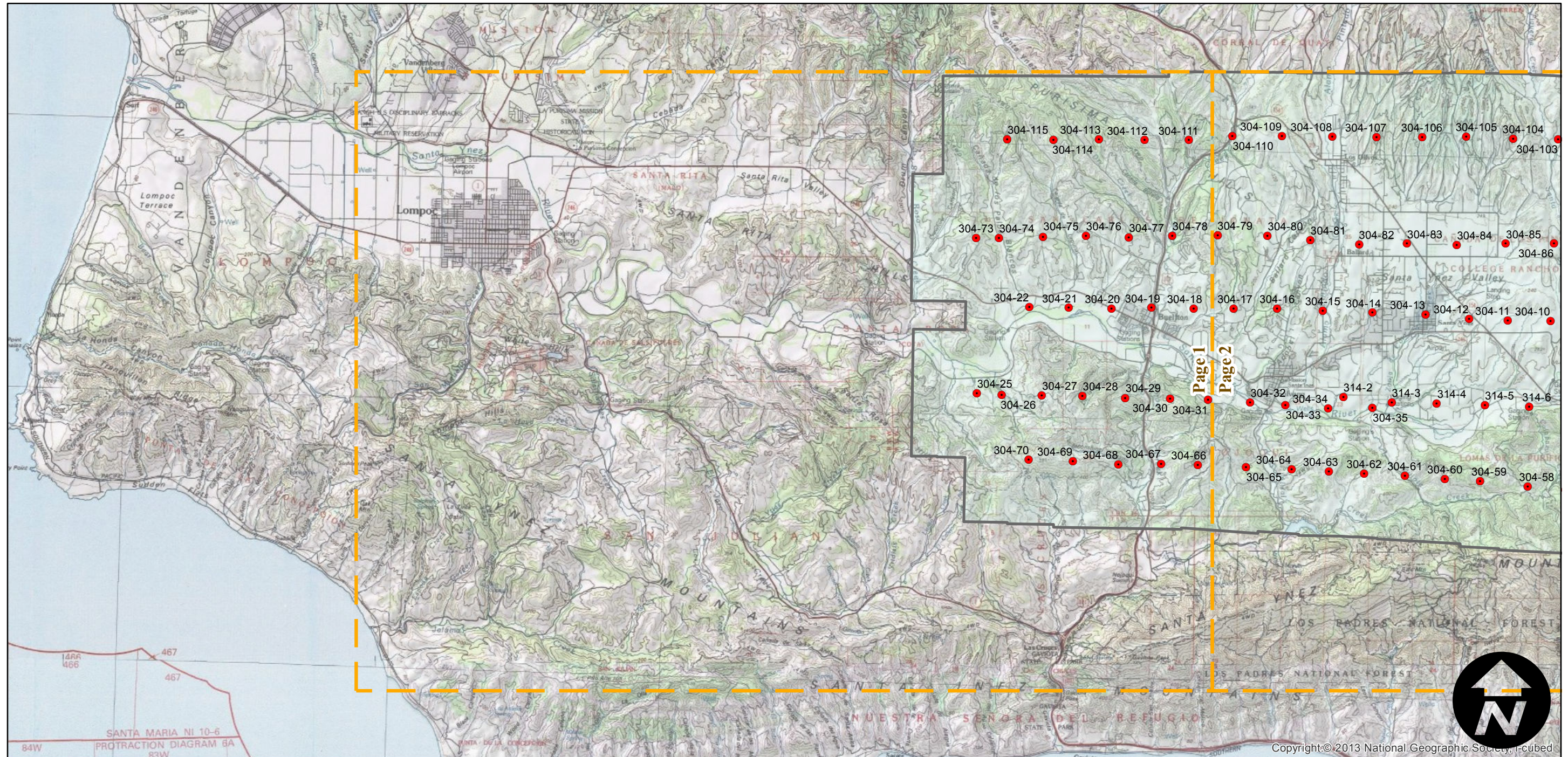
Counties: Santa Barbara
Flight date(s): 01-01-1940 to 12-31-1940
Scale: 1: 20,000
Overlap: 60%

Note: Imagery from Fairchild Aerial Surveys flight C-6500 incorporated into this flight (June 1944). Prints and nitrate negatives acquired from Whittier College, January 2013.

FLIGHT LOCATION



Complete Metadata:
<http://www.library.ucsb.edu/mil/aerial-photography-tools>



0 2.5 5 10 Miles

Index to Aerial Photography
Page 1 of 5

Scale of this index: 1:150,000

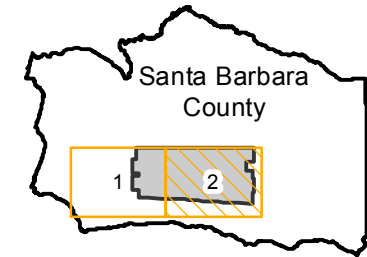
Copyright:© 2013 National Geographic Society, i-cubed

BTM-1940

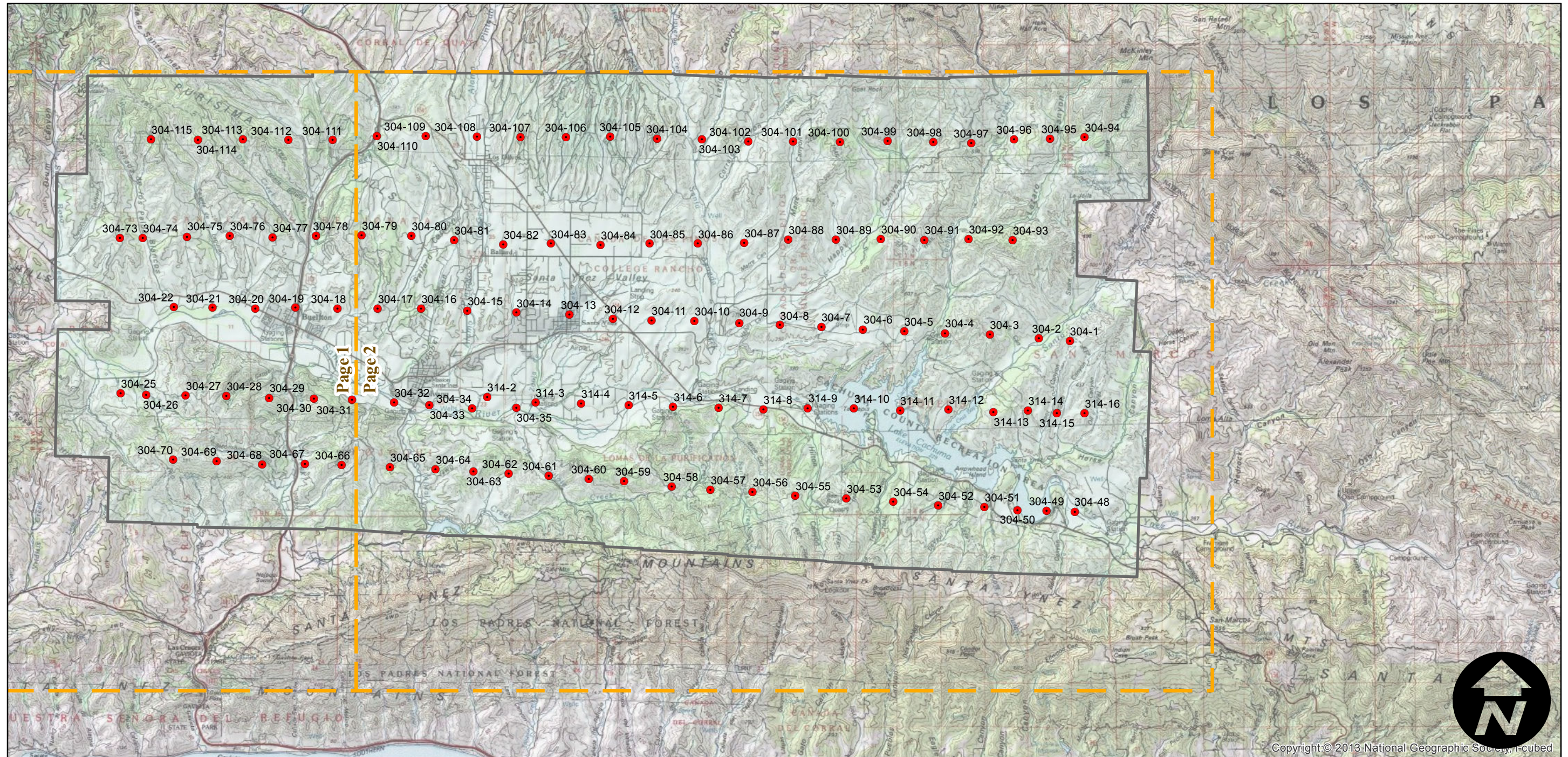
Counties: Santa Barbara
Flight date(s): 01-01-1940 to 12-31-1940
Scale: 1: 20,000
Overlap: 60%

Note: Imagery from Fairchild Aerial Surveys flight C-6500 incorporated into this flight (June 2014). Prints and nitrate negatives acquired from Whittier College, January 2013.

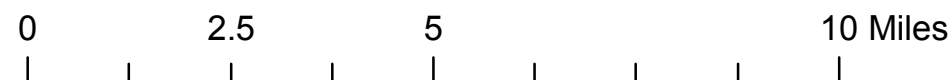
FLIGHT LOCATION



Complete Metadata:
<http://www.library.ucsb.edu/mil/aerial-photography-tools>



Copyright © 2013 National Geographic Society, i-cubed

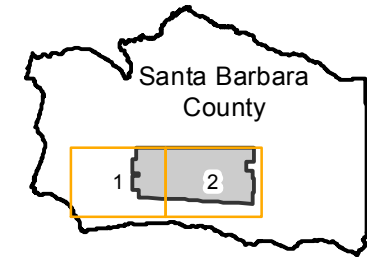


BTM-1940

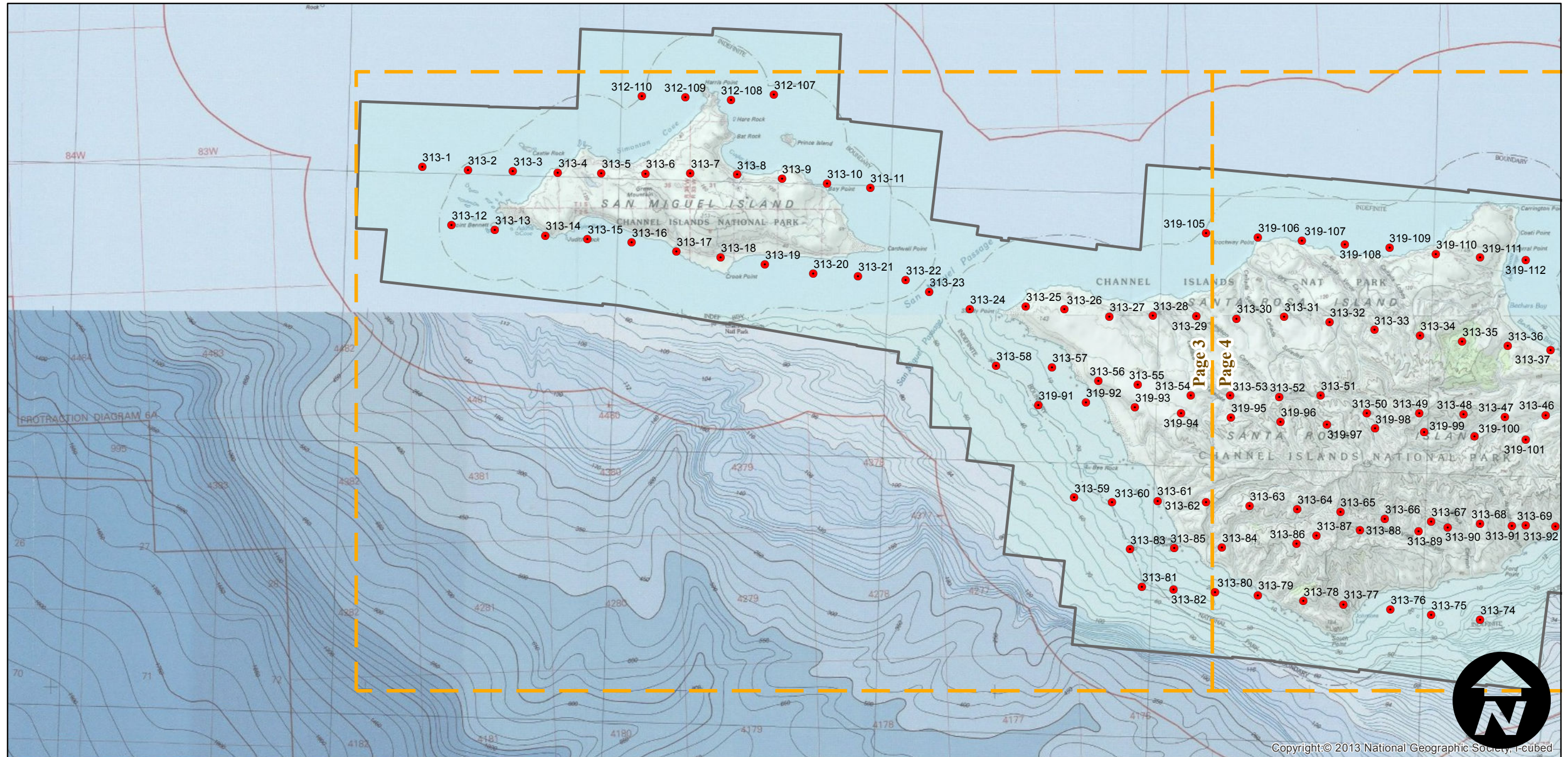
Counties: Santa Barbara
Flight date(s): 01-01-1940 to 12-31-1940
Scale: 1: 20,000
Overlap: 60%

Note: Imagery from Fairchild Aerial Surveys flight C-6500 incorporated into this flight (June 2014). Prints and nitrate negatives acquired from Whittier College, January 2013.

FLIGHT LOCATION



Complete Metadata:
<http://www.library.ucsb.edu/mil/aerial-photography-tools>



0 2.5 5 10 Miles

Index to Aerial Photography
Page 3 of 5

Scale of this index: 1:150,000



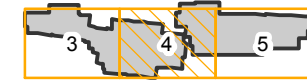
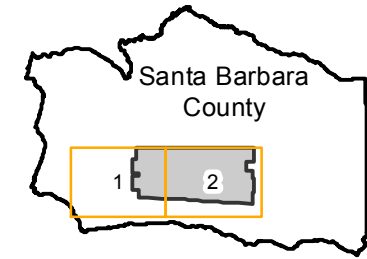
Copyright:© 2013 National Geographic Society, i-cubed

BTM-1940

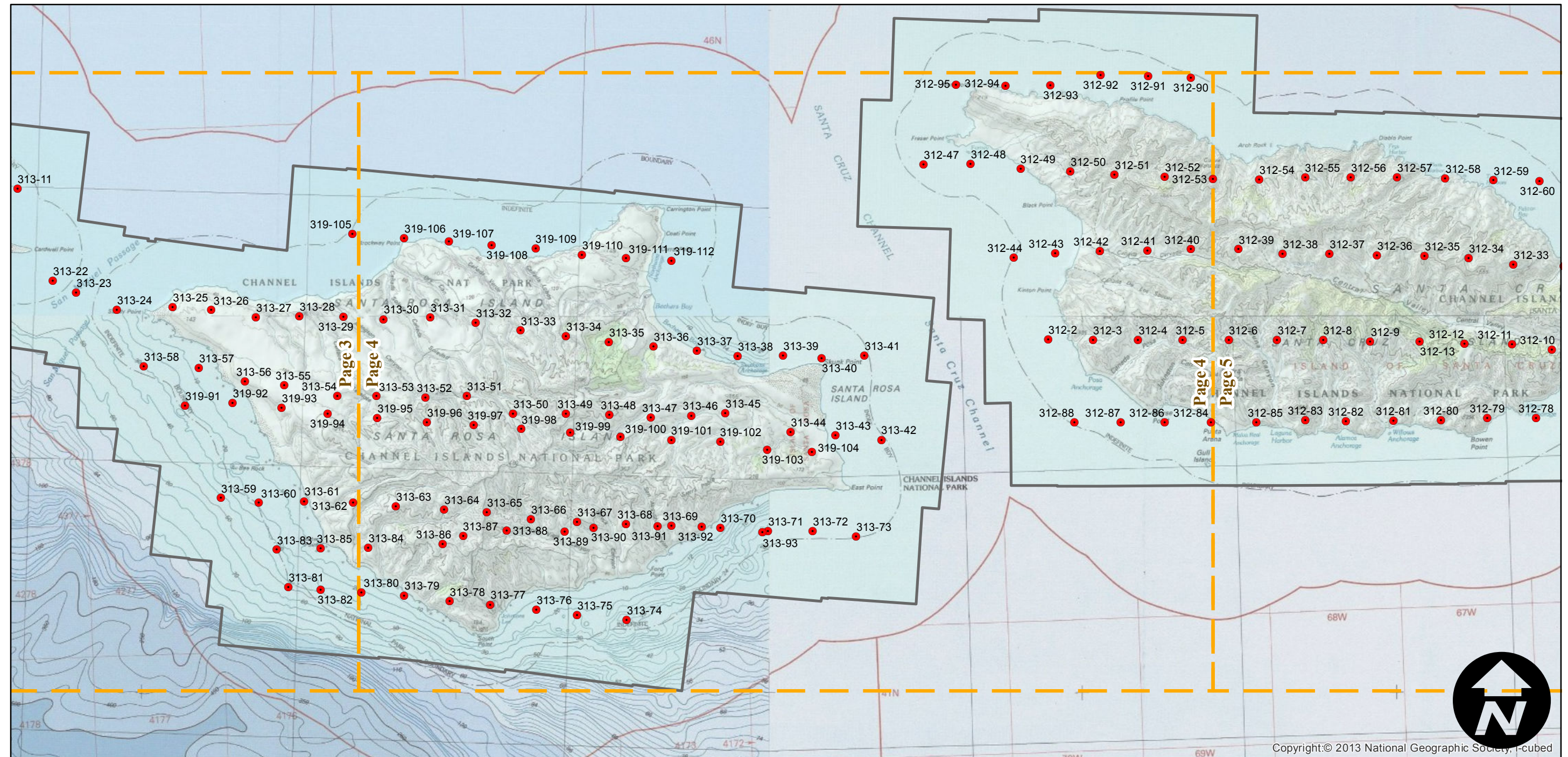
Counties: Santa Barbara
Flight date(s): 01-01-1940 to 12-31-1940
Scale: 1: 20,000
Overlap: 60%

Note: Imagery from Fairchild Aerial Surveys flight C-6500 incorporated into this flight (June 2014). Prints and nitrate negatives acquired from Whittier College, January 2013.

FLIGHT LOCATION



Complete Metadata:
<http://www.library.ucsb.edu/mil/aerial-photography-tools>



Copyright:© 2013 National Geographic Society, I-cubed

0 2.5 5 10 Miles

Index to Aerial Photography
Page 4 of 5

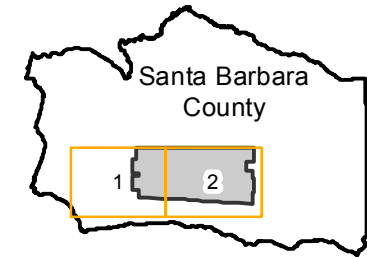
Scale of this index: 1:150,000

BTM-1940

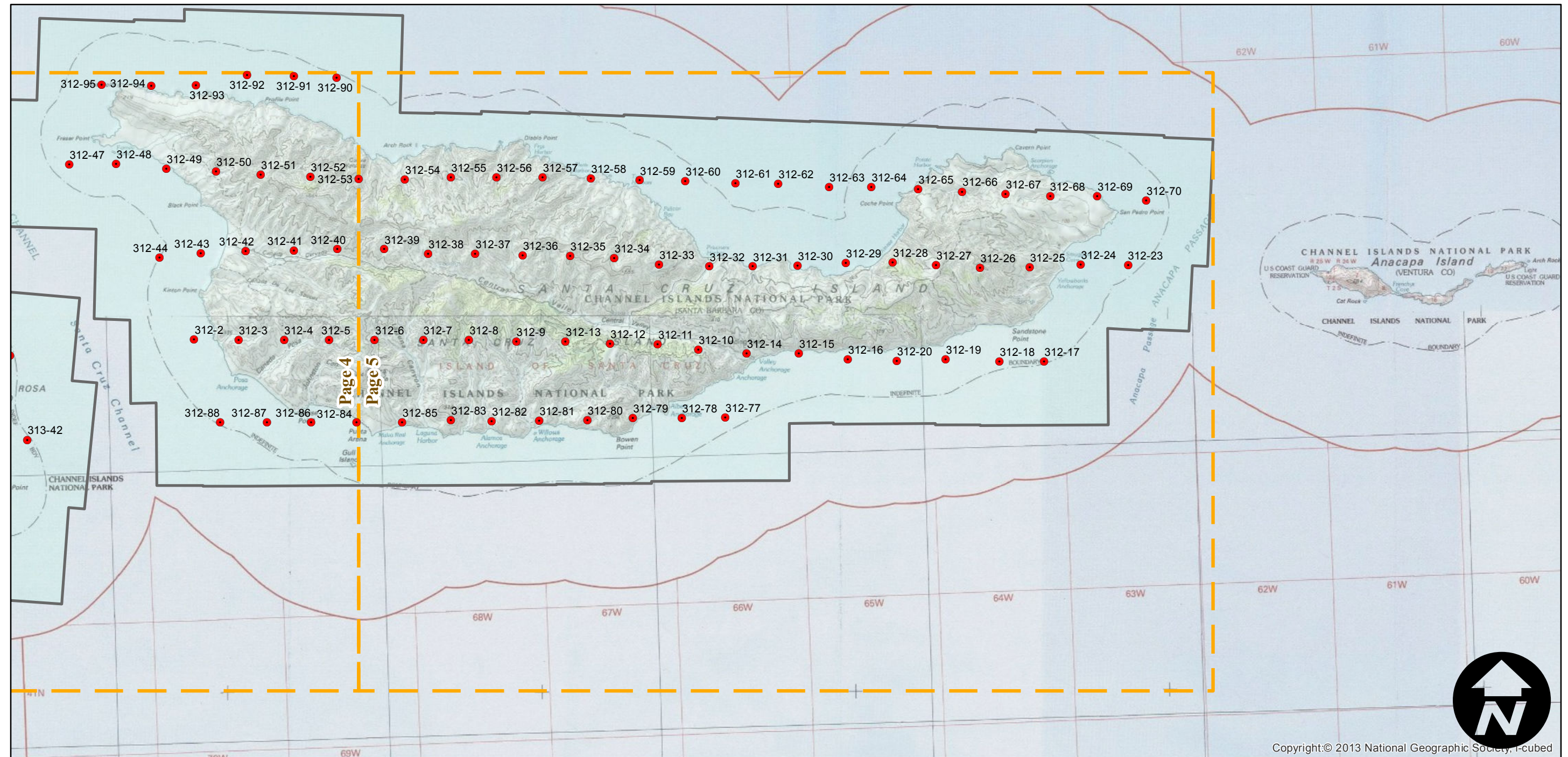
Counties: Santa Barbara
Flight date(s): 01-01-1940 to 12-31-1940
Scale: 1: 20,000
Overlap: 60%

Note: Imagery from Fairchild Aerial Surveys flight C-6500 incorporated into this flight (June 2014). Prints and nitrate negatives acquired from Whittier College, January 2013.

FLIGHT LOCATION



Complete Metadata:
<http://www.library.ucsb.edu/mil/aerial-photography-tools>



Copyright:© 2013 National Geographic Society, I-cubed

0 2.5 5 10 Miles

Index to Aerial Photography
Page 5 of 5

Scale of this index: 1:150,000