

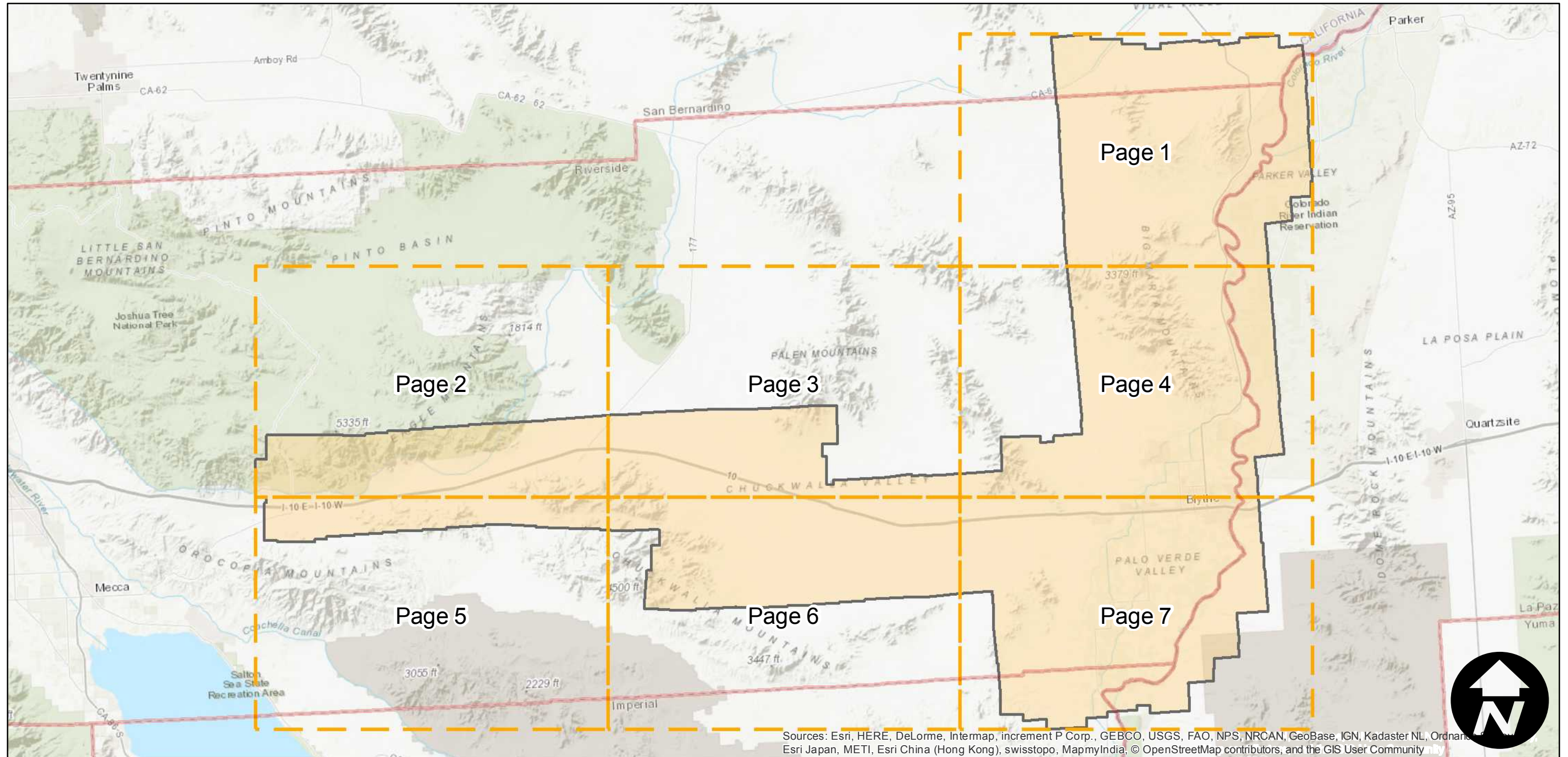
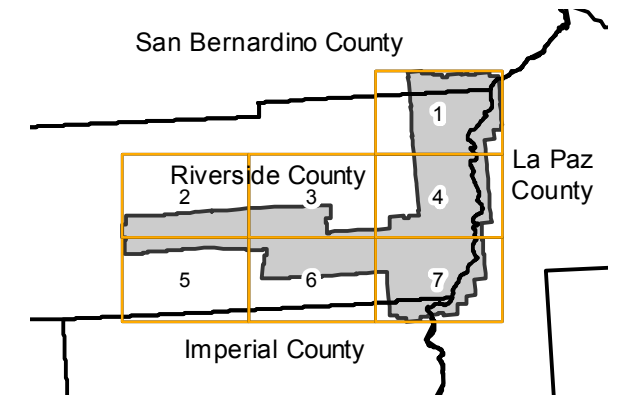
AXM-1953A

Counties: Riverside, Imperial, San Bernardino, La Paz (Arizona)
Flight date(s): 04-15-1953 to 04-23-1953
Scale: 1:20,000
Overlap: 60-80%

Note: Coverage of Coachella Valley, Desert Center, southern Chuckwalla Valley, and Riverside Mountains.

Complete Metadata:
<https://www.library.ucsb.edu/src/airphotos/aerial-photography-information>

FLIGHT LOCATION



Sources: Esri, HERE, DeLorme, Intermap, increment P Corp., GEBCO, USGS, FAO, NPS, NRCAN, GeoBase, IGN, Kadaster NL, Ordnance Survey, Esri Japan, METI, Esri China (Hong Kong), swisstopo, MapmyIndia, © OpenStreetMap contributors, and the GIS User Community

0 10 20 40 Miles

Index to Aerial Photography
Page Key

Scale of this index: 1:510,000

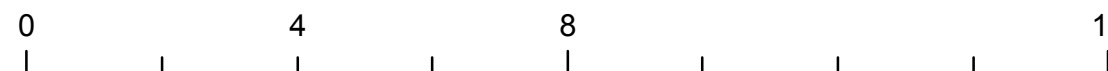
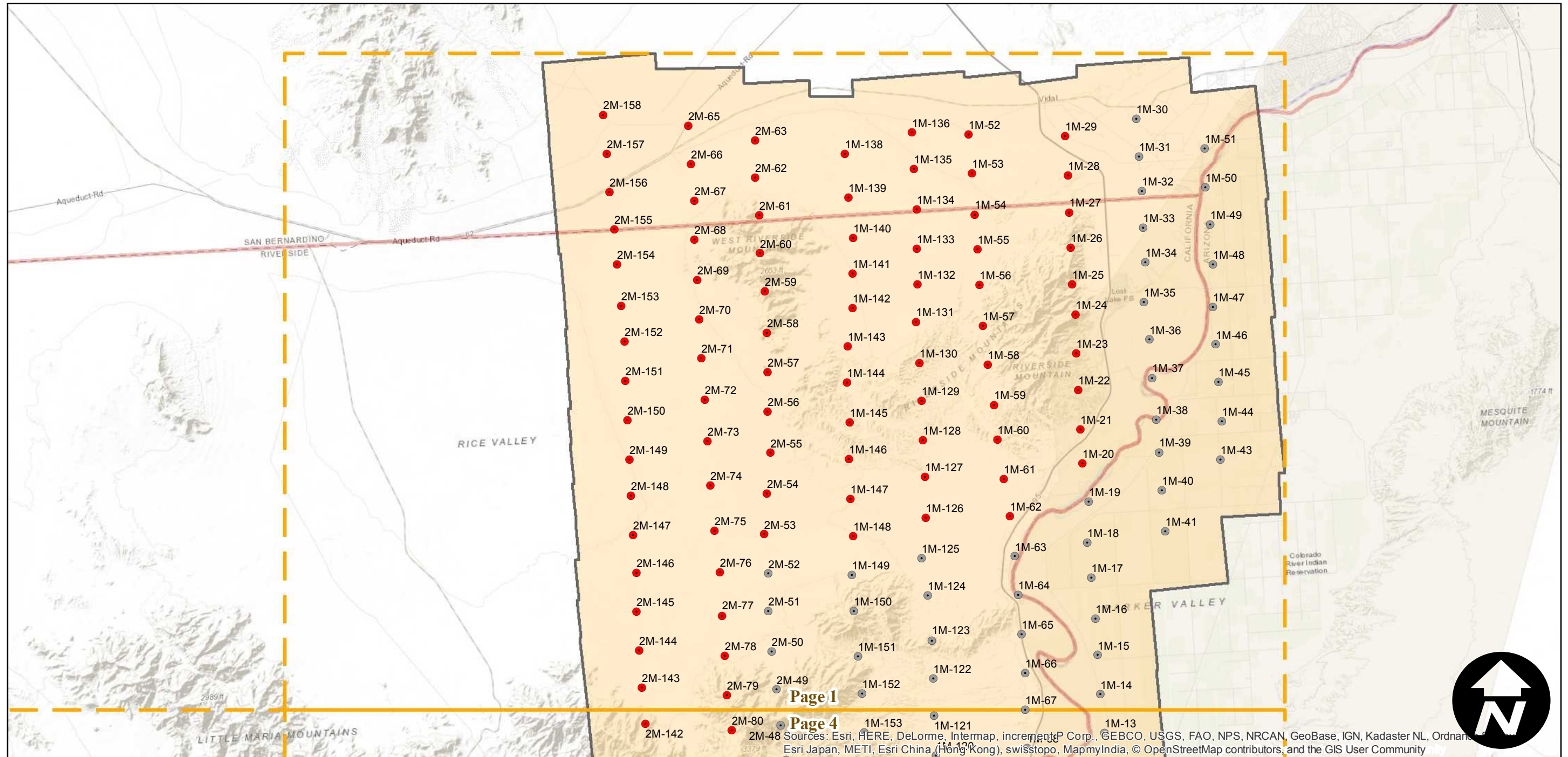
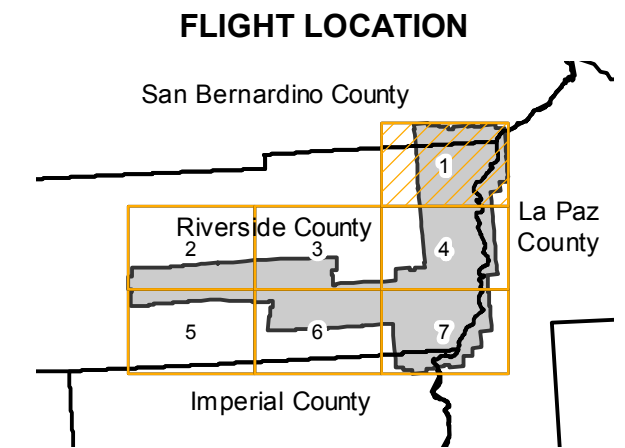
AXM-1953A

Counties: Riverside, Imperial, San Bernardino, La Paz (Arizona)
Flight date(s): 04-15-1953 to 04-23-1953
Scale: 1:20,000
Overlap: 60-80%

Complete Metadata:
<https://www.library.ucsb.edu/src/airphotos/aerial-photography-information>

Note: Coverage of Coachella Valley, Desert Center, southern Chuckwalla Valley, and Riverside Mountains.

- MIL owns frame
- MIL does not own frame



Page 4
Sources: Esri, HERE, DeLorme, Intermap, incrementP Corp., GEBCO, USGS, FAO, NPS, NRCAN, GeoBase, IGN, Kadaster NL, Ordnance Survey, Esri Japan, METI, Esri China (Hong Kong), swisstopo, MapmyIndia, © OpenStreetMap contributors, and the GIS User Community

AXM-1953A

Counties: Riverside, Imperial, San Bernardino, La Paz (Arizona)

Flight date(s): 04-15-1953 to 04-23-1953

Scale: 1:20,000

Overlap: 60-80%

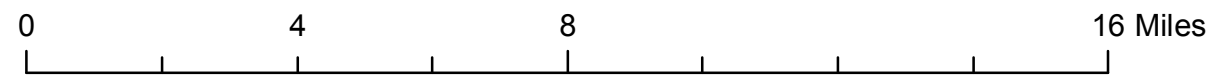
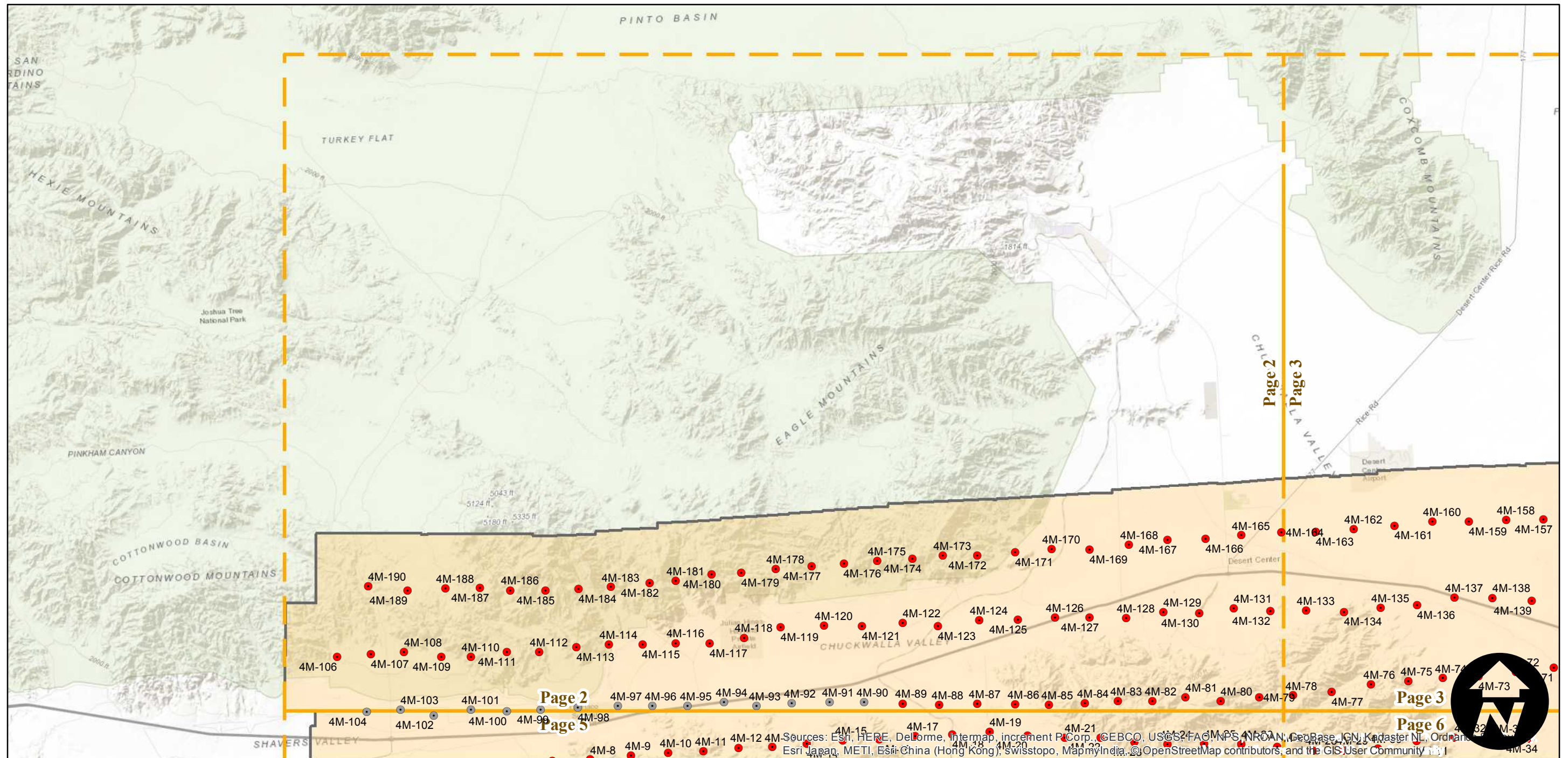
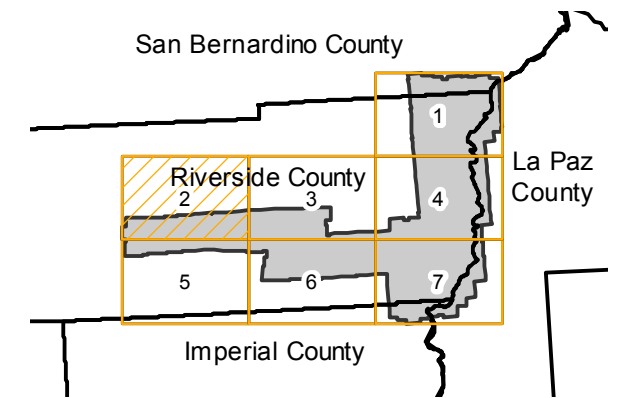
Complete Metadata:

<https://www.library.ucsb.edu/src/airphotos/aerial-photography-information>

Note: Coverage of Coachella Valley, Desert Center, southern Chuckwalla Valley, and Riverside Mountains.

- MIL owns frame
- MIL does not own frame

FLIGHT LOCATION



Sources: Esri, HERE, DeLorme, Intermap, increment P Corp., GEBCO, USGS, FAO, NPS, NRCAN, GeoBase, IGN, Kadaster NL, Ordnance Survey, Esri Japan, METI, Esri China (Hong Kong), Swisstopo, MapmyIndia, © OpenStreetMap contributors, and the GIS User Community

AXM-1953A

Counties: Riverside, Imperial, San Bernardino, La Paz (Arizona)

Flight date(s): 04-15-1953 to 04-23-1953

Scale: 1:20,000

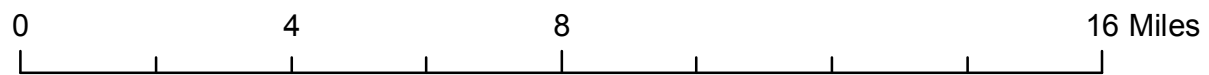
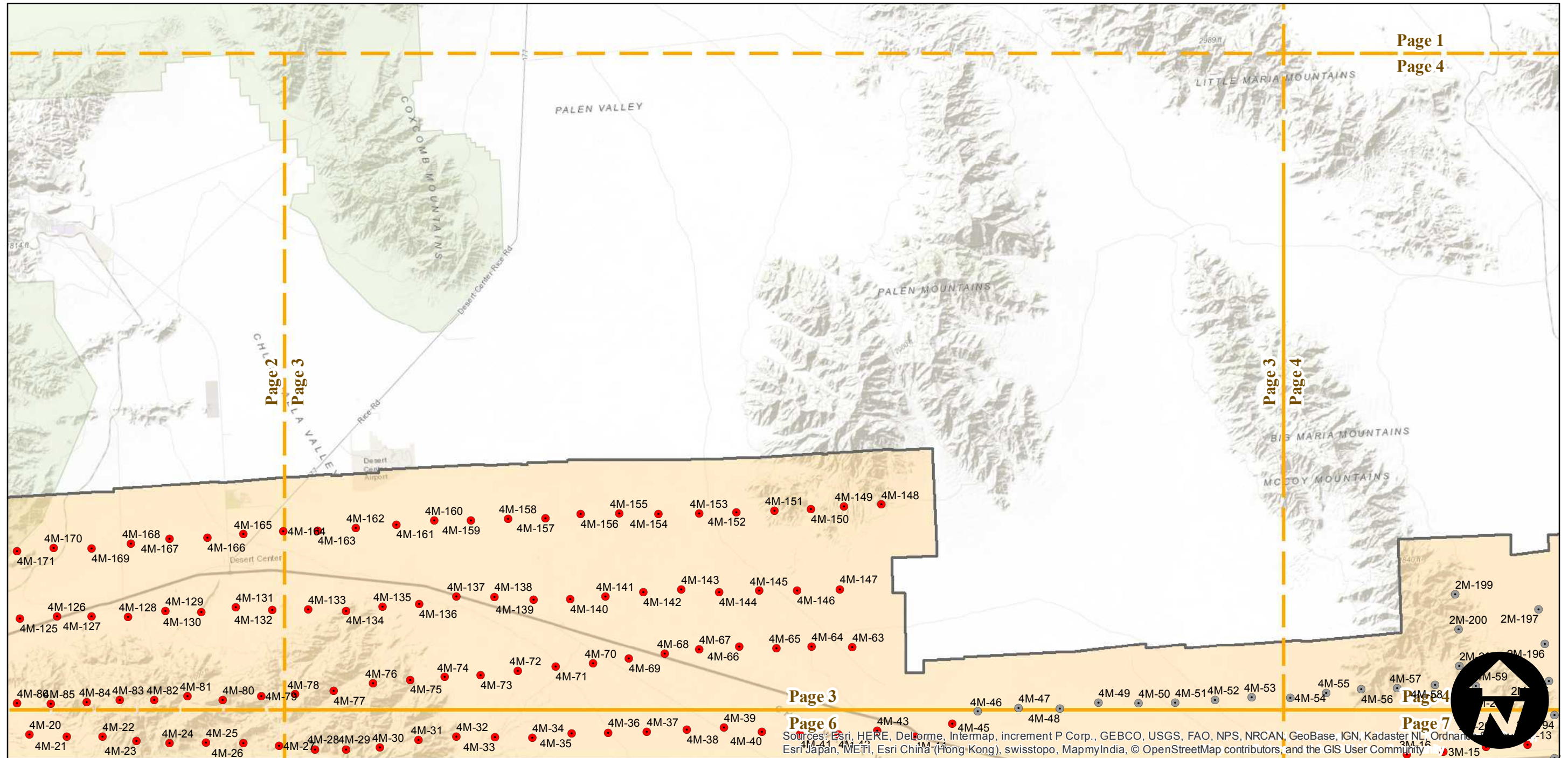
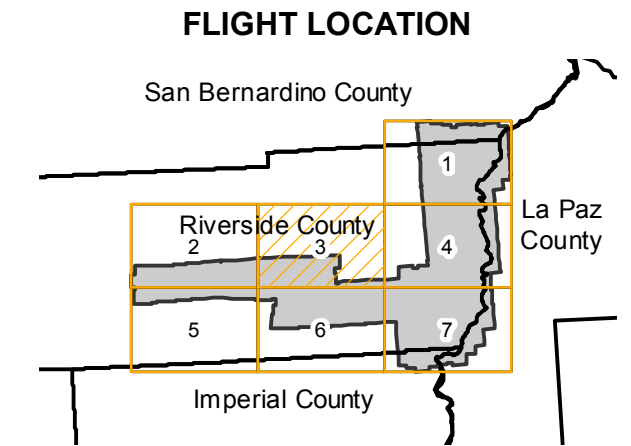
Overlap: 60-80%

Complete Metadata:

<https://www.library.ucsb.edu/src/airphotos/aerial-photography-information>

Note: Coverage of Coachella Valley, Desert Center, southern Chuckwalla Valley, and Riverside Mountains.

- MIL owns frame
- MIL does not own frame



Index to Aerial Photography
Page 3 of 7

Scale of this index: 1:180,000

Sources: Esri, HERE, DeLorme, Intermap, increment P Corp., GEBCO, USGS, FAO, NPS, NRCAN, GeoBase, IGN, Kadaster NL, Ordnance Survey, Esri Japan, METI, Esri China (Hong Kong), swisstopo, MapmyIndia, © OpenStreetMap contributors, and the GIS User Community

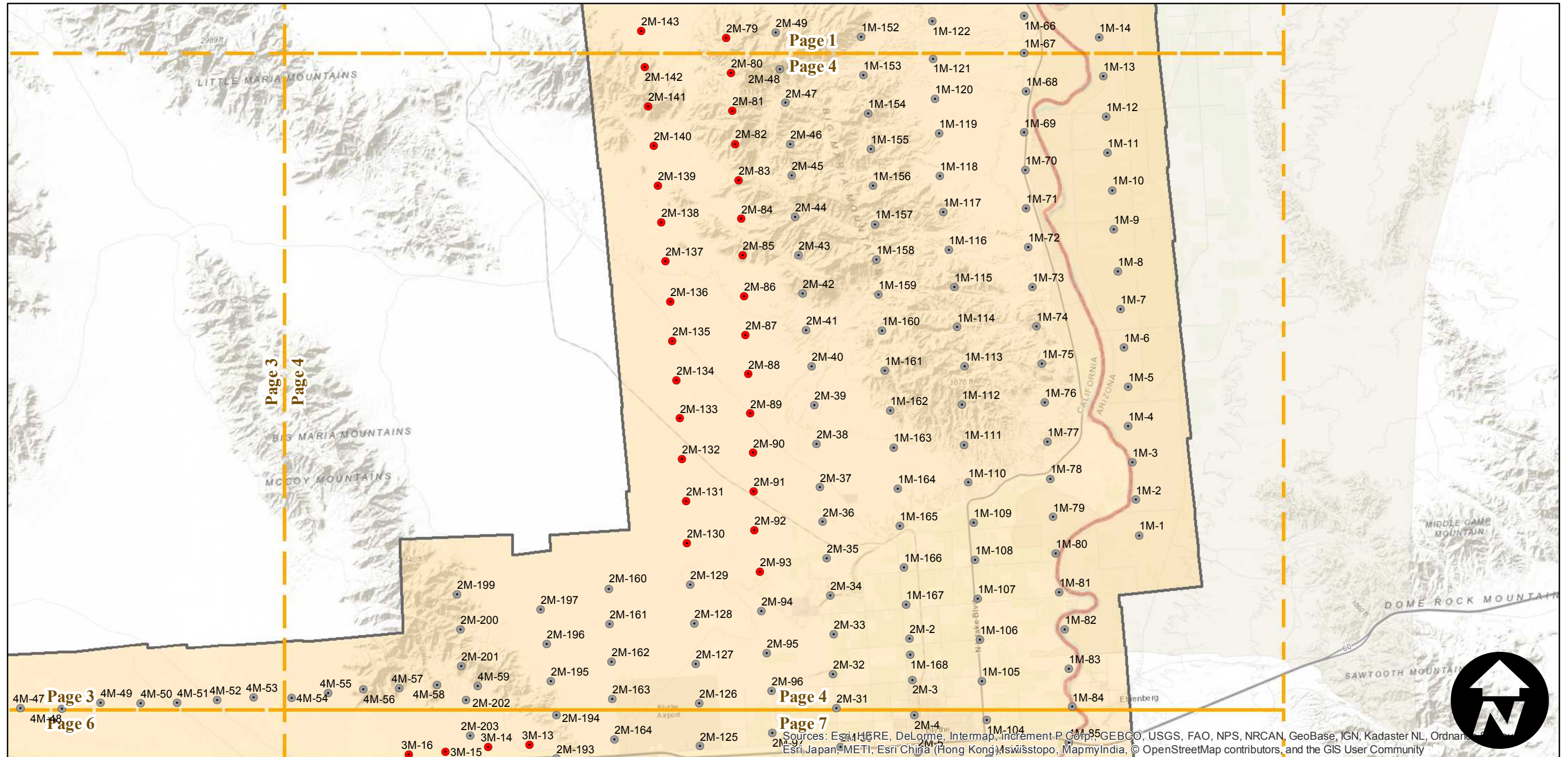
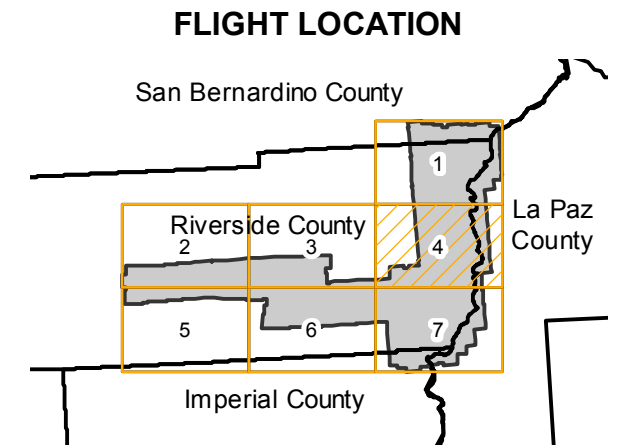
AXM-1953A

Counties: Riverside, Imperial, San Bernardino, La Paz (Arizona)
 Flight date(s): 04-15-1953 to 04-23-1953
 Scale: 1:20,000
 Overlap: 60-80%

Complete Metadata:
<https://www.library.ucsb.edu/src/airphotos/aerial-photography-information>

Note: Coverage of Coachella Valley, Desert Center, southern Chuckwalla Valley, and Riverside Mountains.

- MIL owns frame
- MIL does not own frame



0 4 8 16 Miles

Index to Aerial Photography
 Page 4 of 7

Scale of this index: 1:180,000

Sources: Esri, HERE, DeLorme, Intermap, increment P Corp., GEBCO, USGS, FAO, NPS, NRCAN, GeoBase, IGN, Kadaster NL, Ordnance Survey, Esri Japan, METI, Esri China (Hong Kong), Swisstopo, MapmyIndia, © OpenStreetMap contributors, and the GIS User Community

AXM-1953A

Counties: Riverside, Imperial, San Bernardino, La Paz (Arizona)

Flight date(s): 04-15-1953 to 04-23-1953

Scale: 1:20,000

Overlap: 60-80%

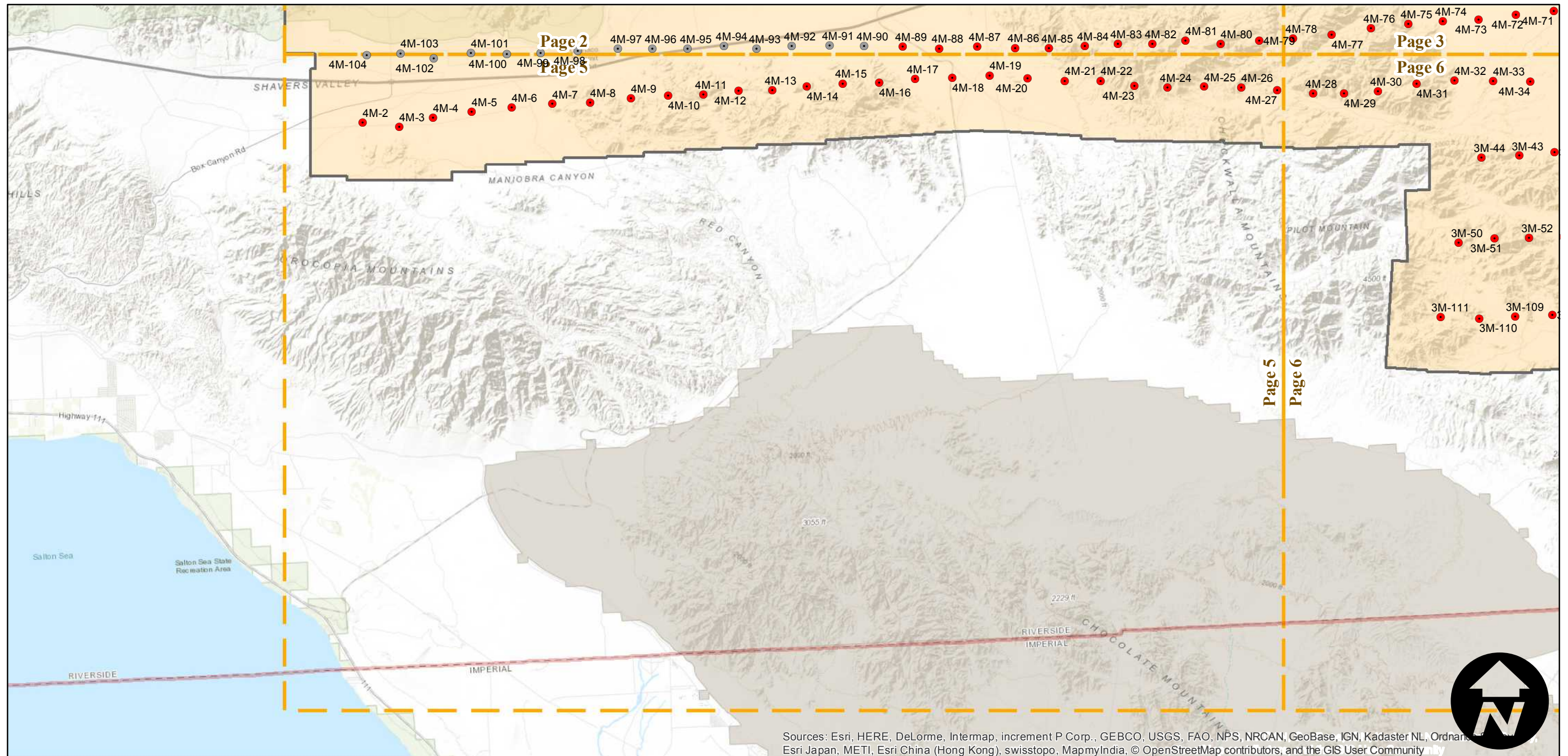
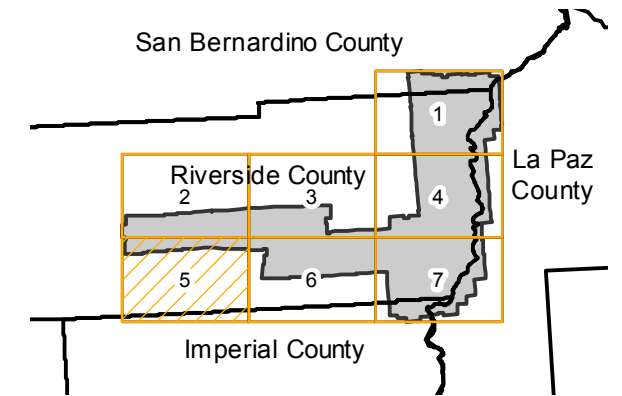
Complete Metadata:

<https://www.library.ucsb.edu/src/airphotos/aerial-photography-information>

Note: Coverage of Coachella Valley, Desert Center, southern Chuckwalla Valley, and Riverside Mountains.

- MIL owns frame
- MIL does not own frame

FLIGHT LOCATION



Sources: Esri, HERE, DeLorme, Intermap, increment P Corp., GEBCO, USGS, FAO, NPS, NRCAN, GeoBase, IGN, Kadaster NL, Ordnance Survey, Esri Japan, METI, Esri China (Hong Kong), swisstopo, MapmyIndia, © OpenStreetMap contributors, and the GIS User Community

0 4 8 16 Miles

Index to Aerial Photography
Page 5 of 7

Scale of this index: 1:180,000

AXM-1953A

Counties: Riverside, Imperial, San Bernardino, La Paz (Arizona)

Flight date(s): 04-15-1953 to 04-23-1953

Scale: 1:20,000

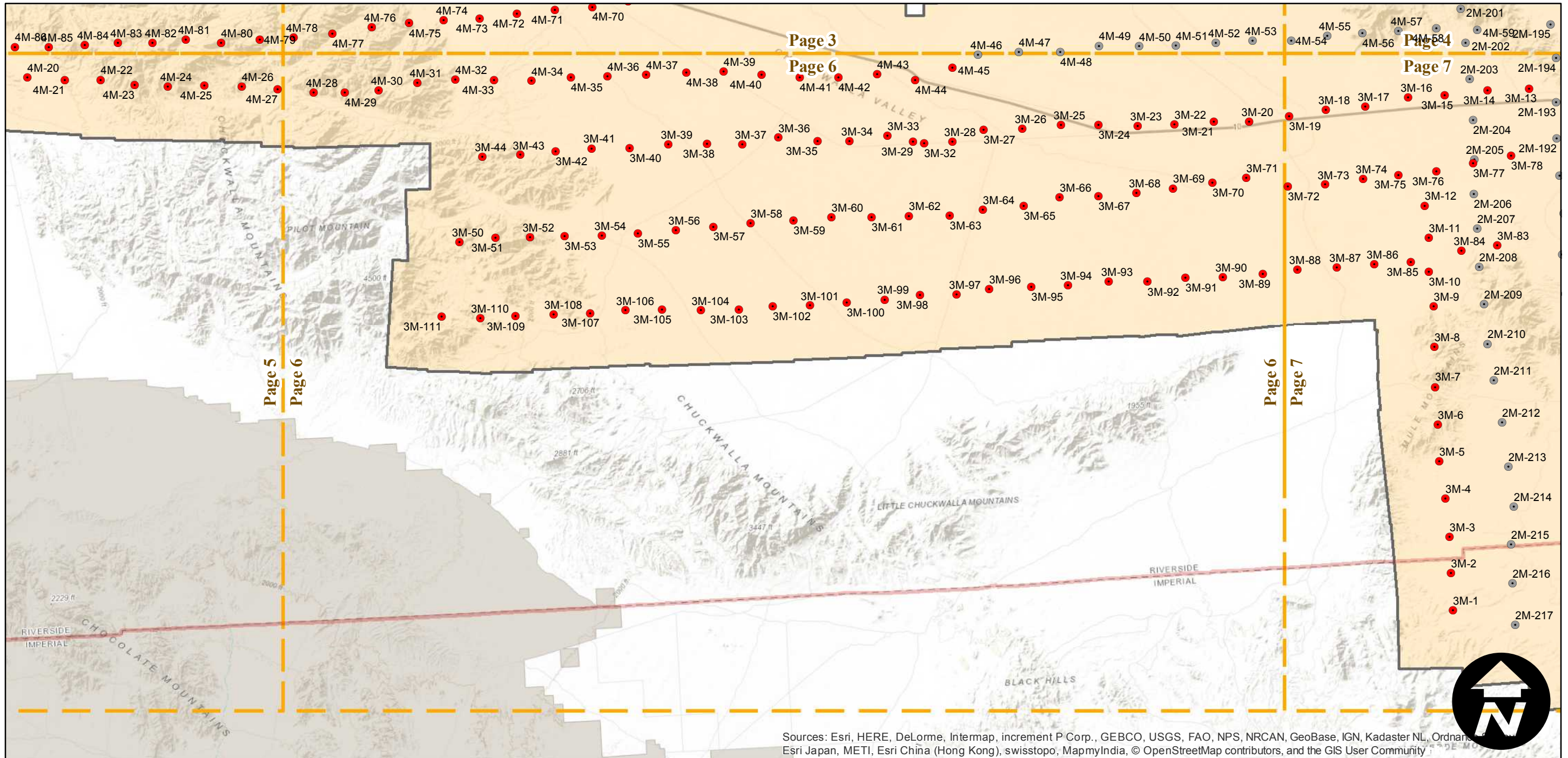
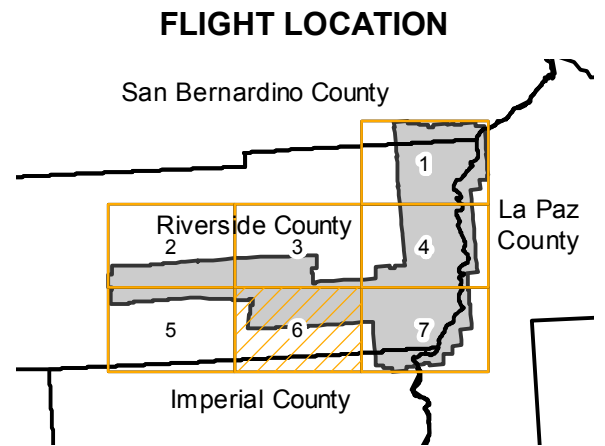
Overlap: 60-80%

Complete Metadata:

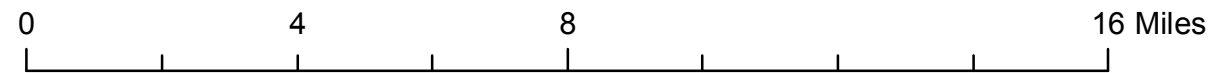
<https://www.library.ucsb.edu/src/airphotos/aerial-photography-information>

Note: Coverage of Coachella Valley, Desert Center, southern Chuckwalla Valley, and Riverside Mountains.

- MIL owns frame
- MIL does not own frame



Sources: Esri, HERE, DeLorme, Intermap, increment P Corp., GEBCO, USGS, FAO, NPS, NRCAN, GeoBase, IGN, Kadaster NL, Ordnance Survey, Esri Japan, METI, Esri China (Hong Kong), swisstopo, MapmyIndia, © OpenStreetMap contributors, and the GIS User Community



Index to Aerial Photography
Page 6 of 7

Scale of this index: 1:180,000

AXM-1953A

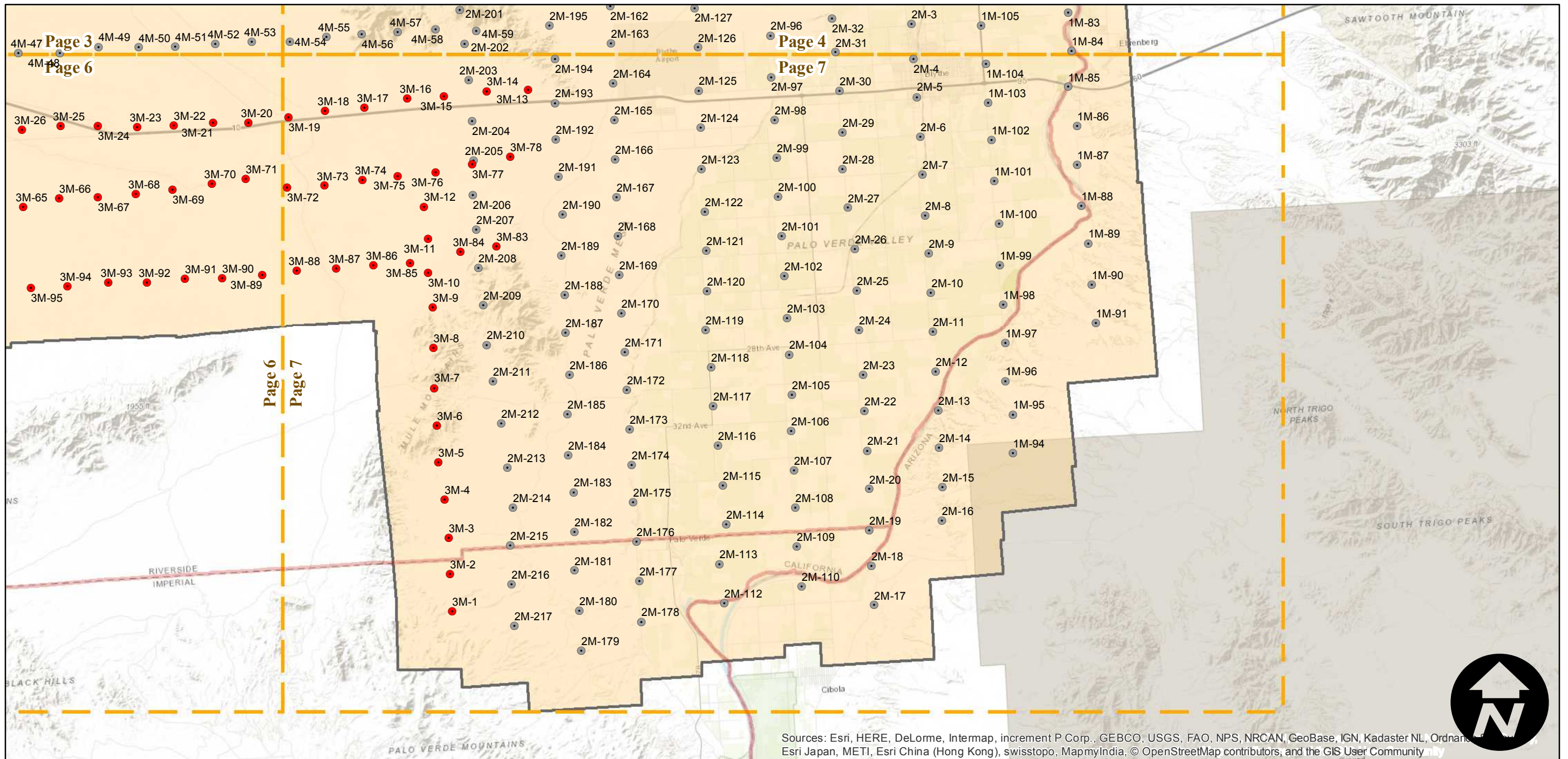
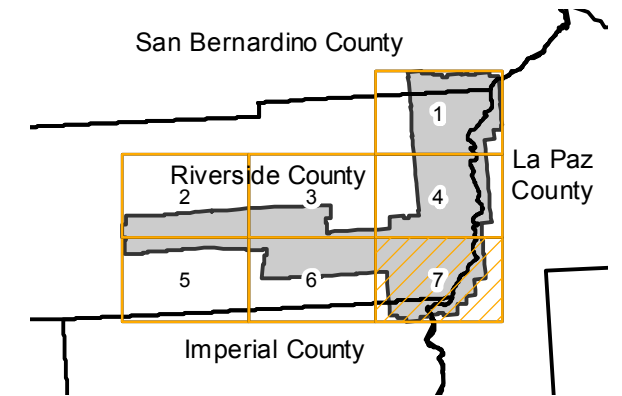
Counties: Riverside, Imperial, San Bernardino, La Paz (Arizona)
 Flight date(s): 04-15-1953 to 04-23-1953
 Scale: 1:20,000
 Overlap: 60-80%

Note: Coverage of Coachella Valley, Desert Center, southern Chuckwalla Valley, and Riverside Mountains.

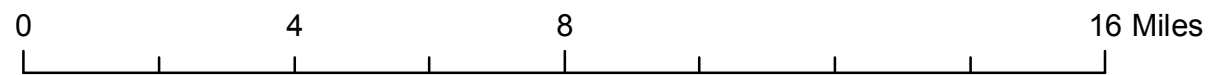
Complete Metadata:
<https://www.library.ucsb.edu/src/airphotos/aerial-photography-information>

- MIL owns frame
- MIL does not own frame

FLIGHT LOCATION



Sources: Esri, HERE, DeLorme, Intermap, increment P Corp., GEBCO, USGS, FAO, NPS, NRCAN, GeoBase, IGN, Kadaster NL, Ordnance Survey, Esri Japan, METI, Esri China (Hong Kong), swisstopo, MapmyIndia, © OpenStreetMap contributors, and the GIS User Community



Index to Aerial Photography
 Page 7 of 7

Scale of this index: 1:180,000