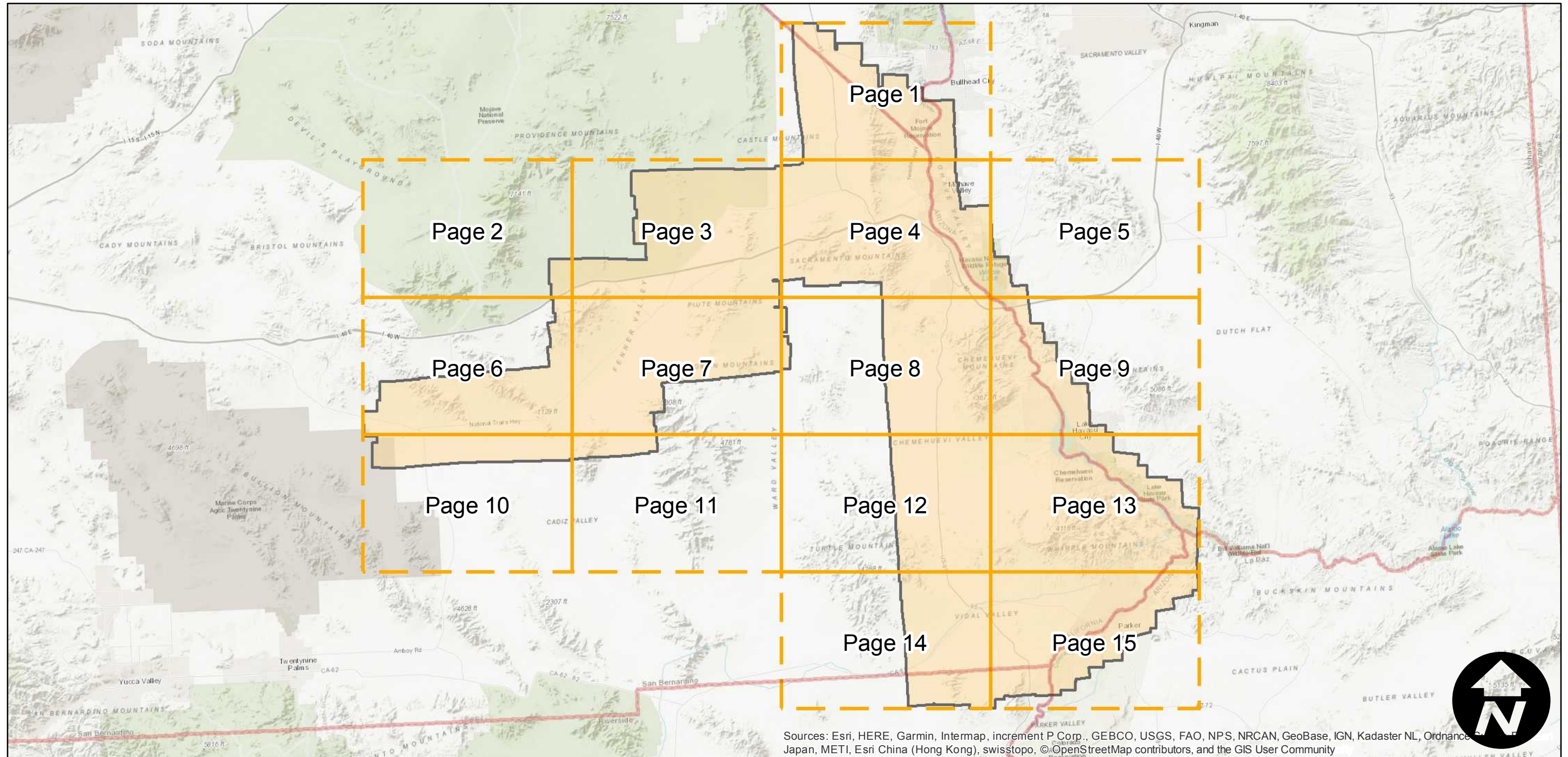
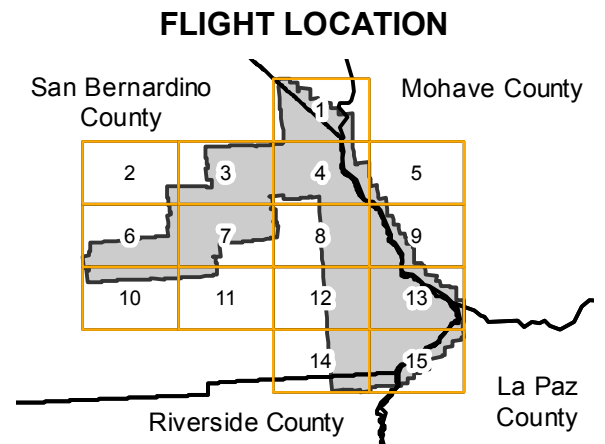


AXL-1953A

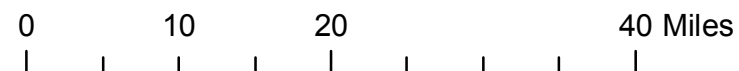
Counties: San Bernardino, Riverside, Mohave (Arizona), La Paz (Arizona), Clark (Nevada)
Flight date(s): 05-05-1953 to 06-21-1953
Scale: 1: 20,000
Overlap: 60-80%

Note: Eastern San Bernardino County. Coverage includes Lake Havasu State Park, Needles, Sacramento Mountains, Vidal Valley, and more.

Complete Metadata:



Sources: Esri, HERE, Garmin, Intermap, increment P Corp., GEBCO, USGS, FAO, NPS, NRCAN, GeoBase, IGN, Kadaster NL, Ordnance Survey, Esri Japan, METI, Esri China (Hong Kong), swisstopo, © OpenStreetMap contributors, and the GIS User Community



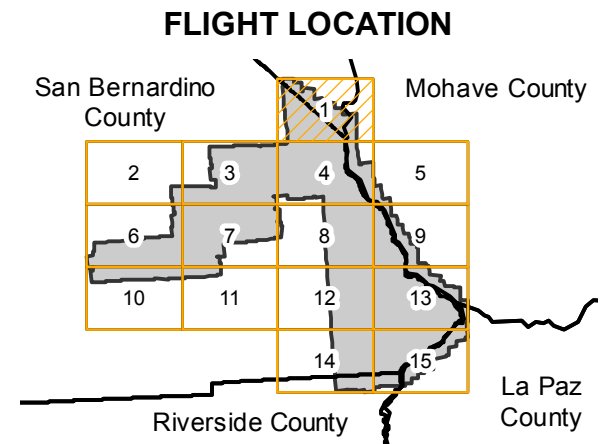
Index to Aerial Photography
Page Key

Scale of this index: 1:800,000

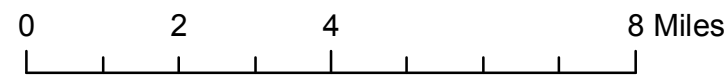
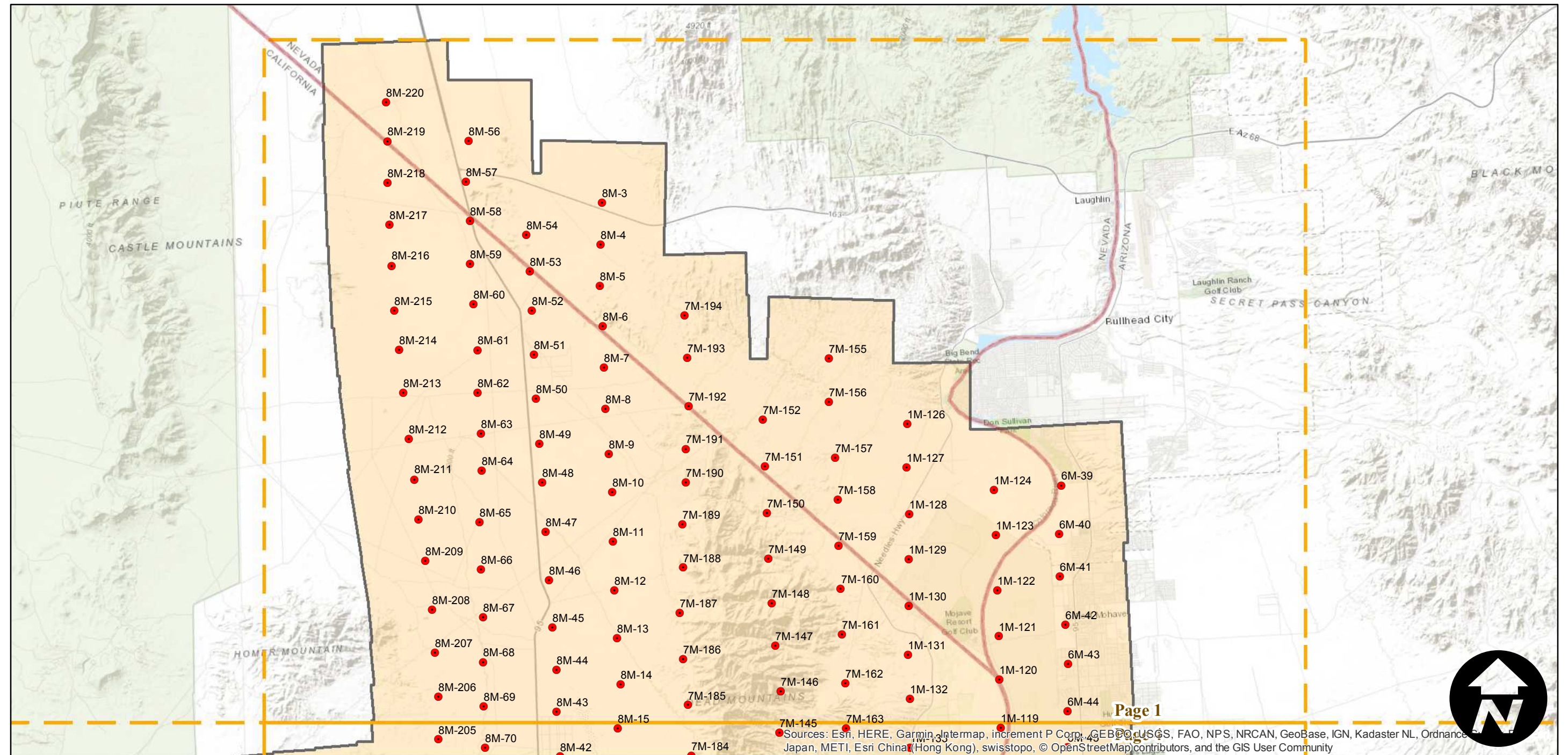
AXL-1953A

Counties: San Bernardino, Riverside, Mohave (Arizona), La Paz (Arizona), Clark (Nevada)
Flight date(s): 05-05-1953 to 06-21-1953
Scale: 1: 20,000
Overlap: 60-80%

Note: Eastern San Bernardino County. Coverage includes Lake Havasu State Park, Needles, Sacramento Mountains, Vidal Valley, and more.



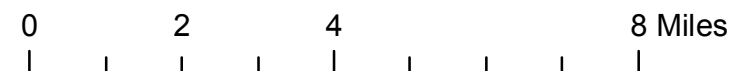
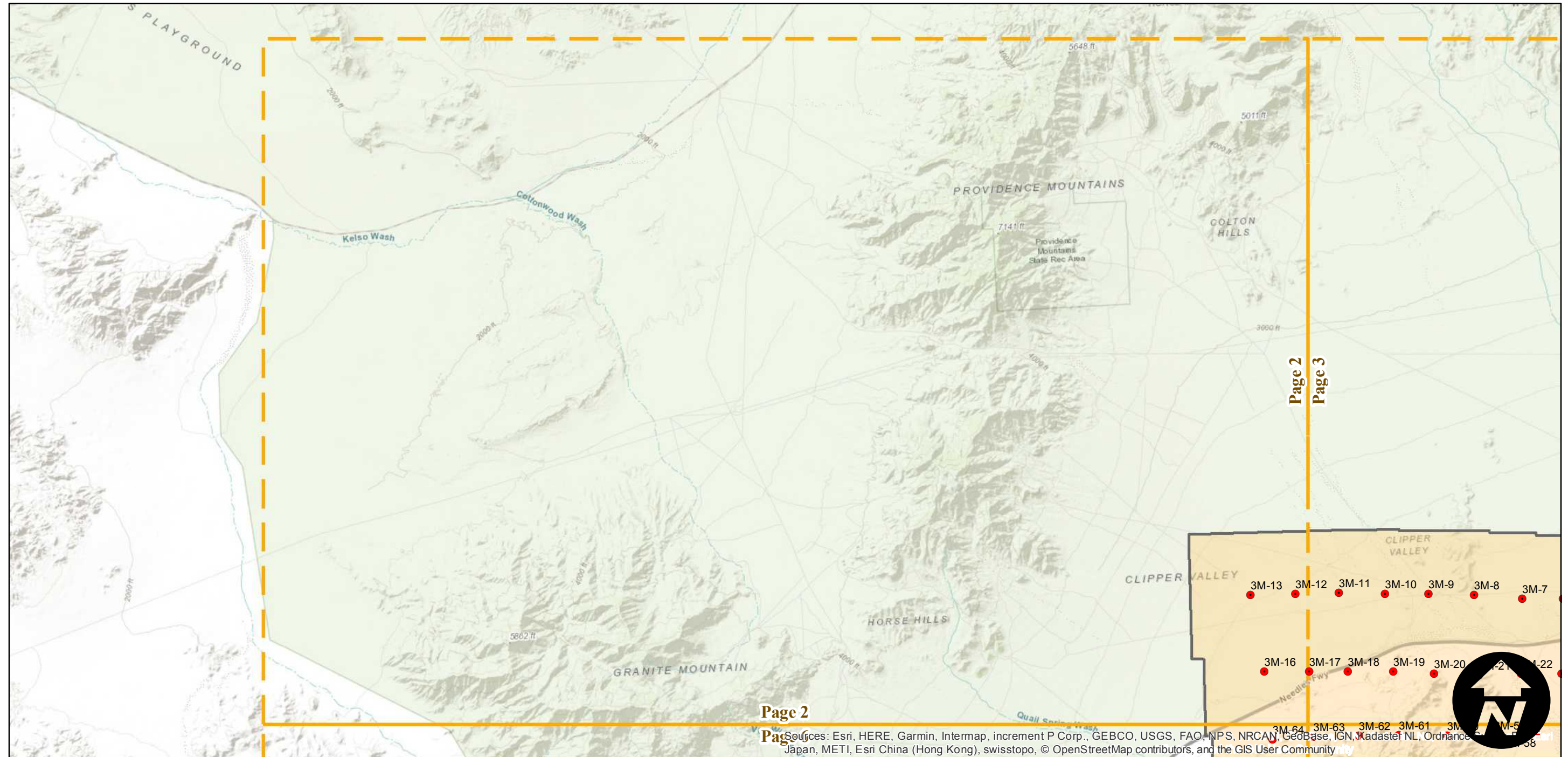
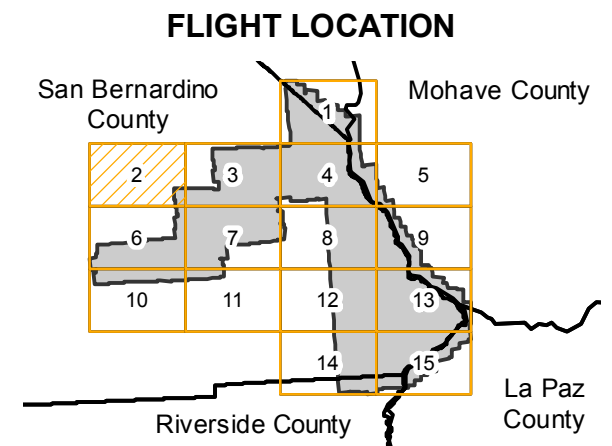
Complete Metadata:
<https://www.library.ucsb.edu/src/airphotos/aerial-photography-information>



AXL-1953A

Counties: San Bernardino, Riverside, Mohave (Arizona), La Paz (Arizona), Clark (Nevada)
Flight date(s): 05-05-1953 to 06-21-1953
Scale: 1:20,000
Overlap: 60-80%

Note: Eastern San Bernardino County. Coverage includes Lake Havasu State Park, Needles, Sacramento Mountains, Vidal Valley, and more.

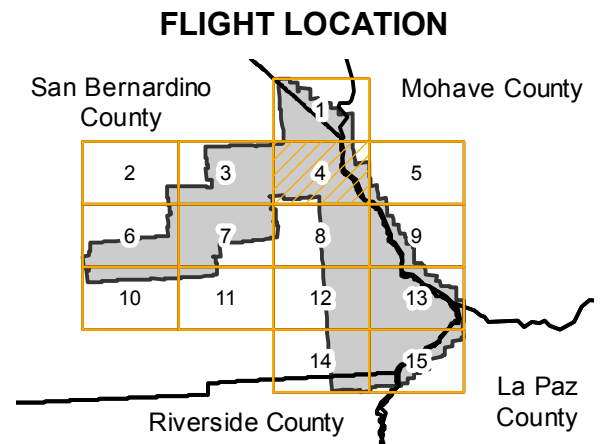


Sources: Esri, HERE, Garmin, Intermap, increment P Corp., GEBCO, USGS, FAO, NPS, NRCAN, GeoBase, IGN, Kadaster NL, Ordnance Survey, Esri Japan, METI, Esri China (Hong Kong), swisstopo, © OpenStreetMap contributors, and the GIS User Community

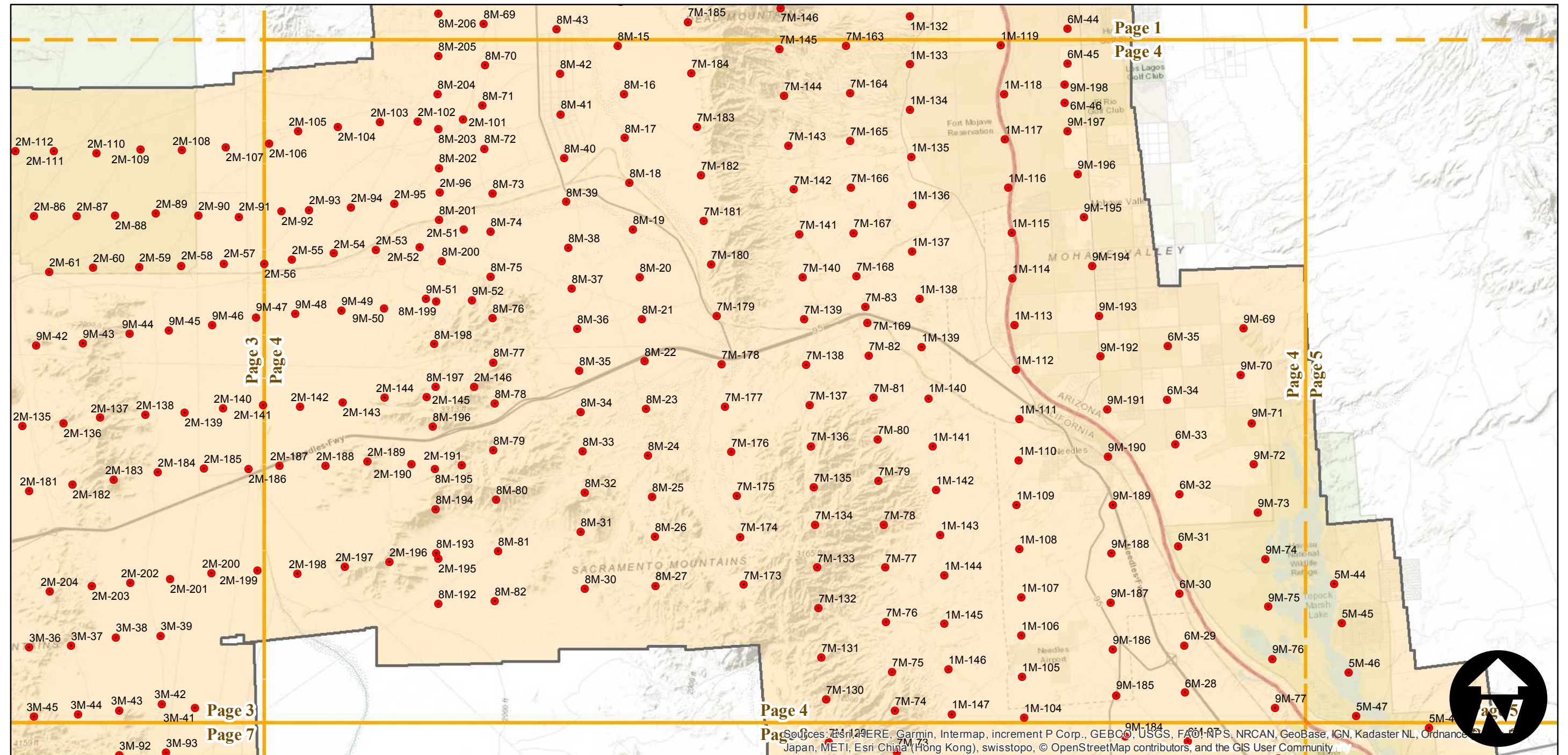
AXL-1953A

Counties: San Bernardino, Riverside, Mohave (Arizona), La Paz (Arizona), Clark (Nevada)
Flight date(s): 05-05-1953 to 06-21-1953
Scale: 1: 20,000
Overlap: 60-80%

Note: Eastern San Bernardino County. Coverage includes Lake Havasu State Park, Needles, Sacramento Mountains, Vidal Valley, and more.



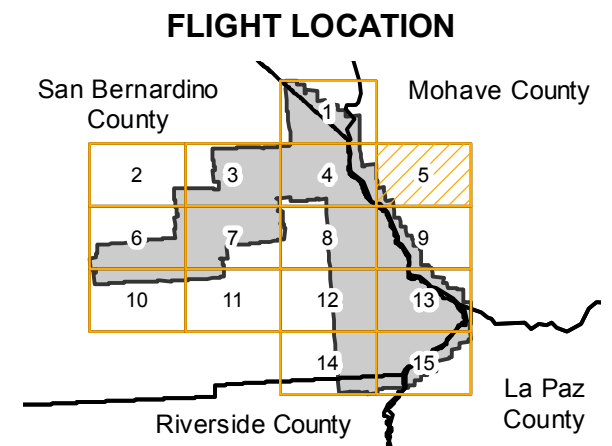
Complete Metadata:
<https://www.library.ucsb.edu/src/airphotos/aerial-photography-information>



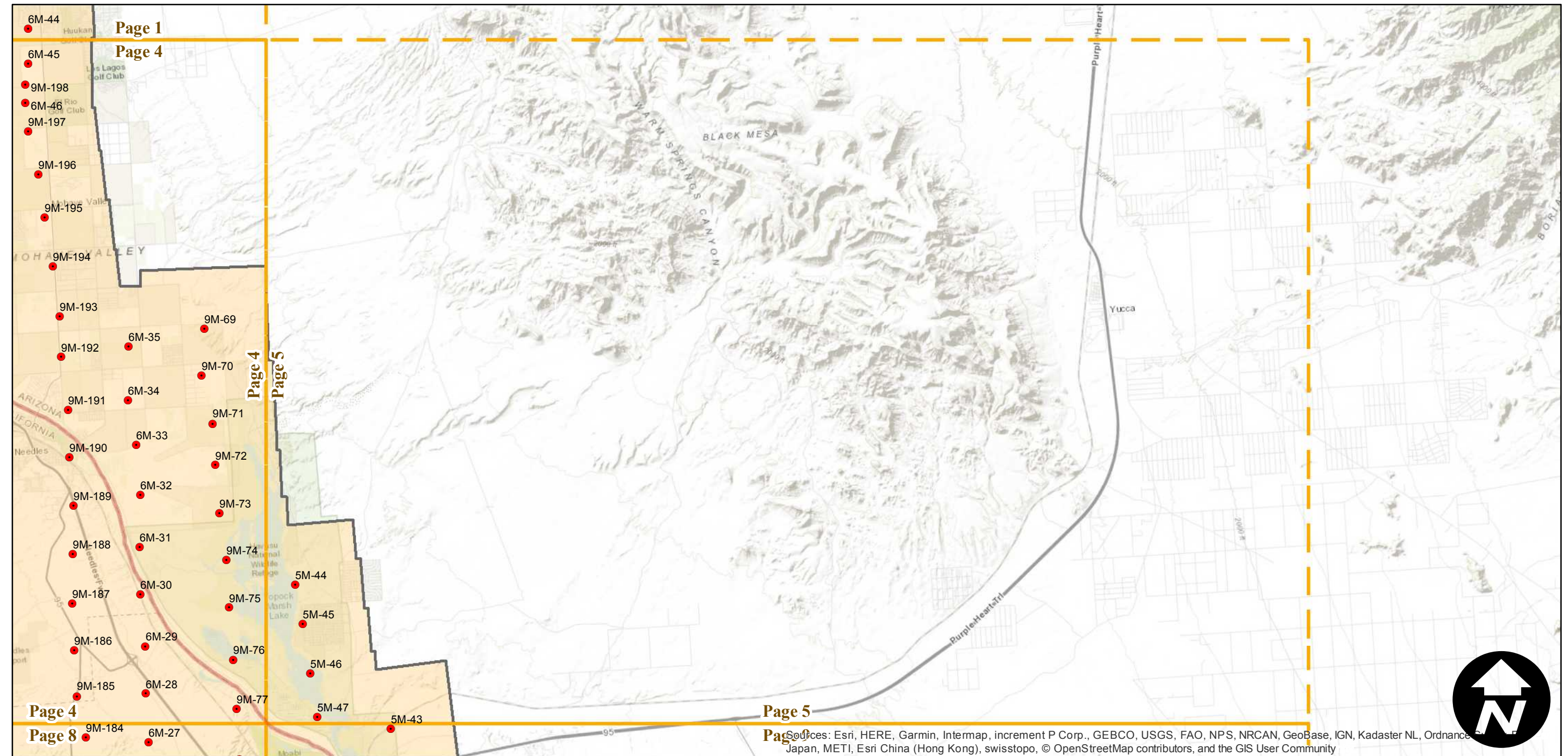
AXL-1953A

Counties: San Bernardino, Riverside, Mohave (Arizona), La Paz (Arizona), Clark (Nevada)
 Flight date(s): 05-05-1953 to 06-21-1953
 Scale: 1: 20,000
 Overlap: 60-80%

Note: Eastern San Bernardino County. Coverage includes Lake Havasu State Park, Needles, Sacramento Mountains, Vidal Valley, and more.



Complete Metadata:
<https://www.library.ucsb.edu/src/airphotos/aerial-photography-information>



Sources: Esri, HERE, Garmin, Intermap, increment P Corp., GEBCO, USGS, FAO, NPS, NRCAN, GeoBase, IGN, Kadaster NL, Ordnance Survey, Esri Japan, METI, Esri China (Hong Kong), swisstopo, © OpenStreetMap contributors, and the GIS User Community

0 2 4 8 Miles

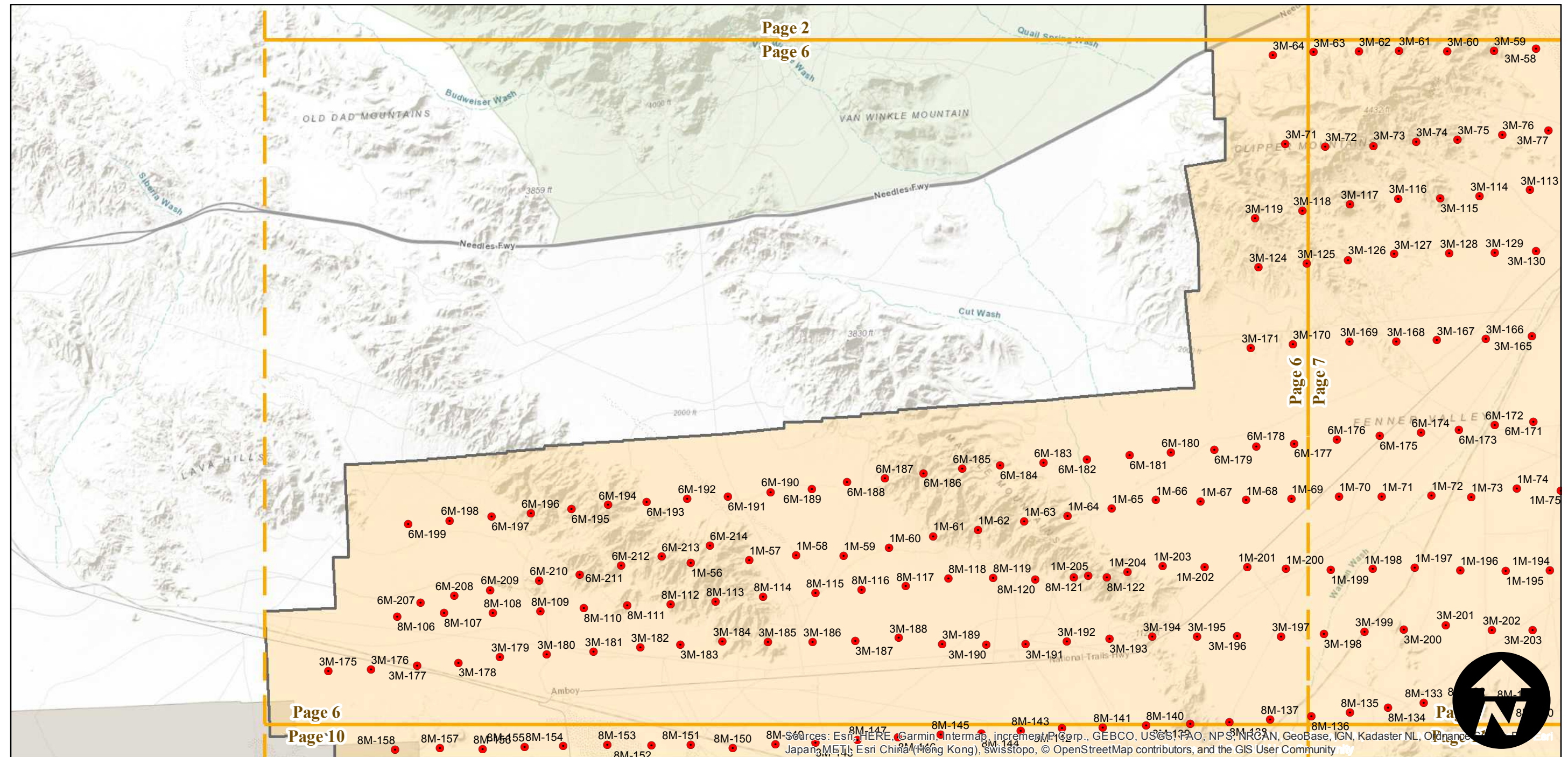
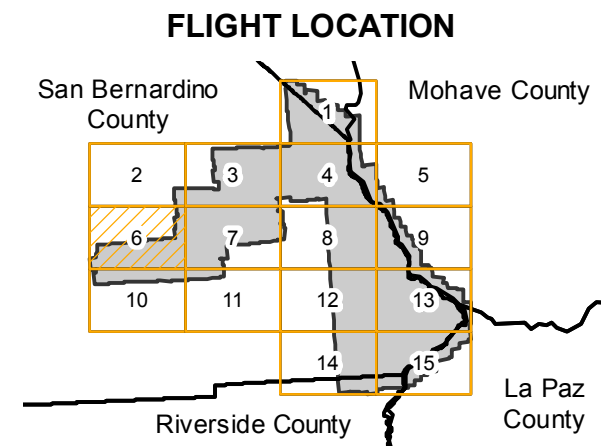
Index to Aerial Photography
 Page 5 of 15

Scale of this index: 1:160,000

AXL-1953A

Counties: San Bernardino, Riverside, Mohave (Arizona), La Paz (Arizona), Clark (Nevada)
Flight date(s): 05-05-1953 to 06-21-1953
Scale: 1: 20,000
Overlap: 60-80%

Note: Eastern San Bernardino County. Coverage includes Lake Havasu State Park, Needles, Sacramento Mountains, Vidal Valley, and more.

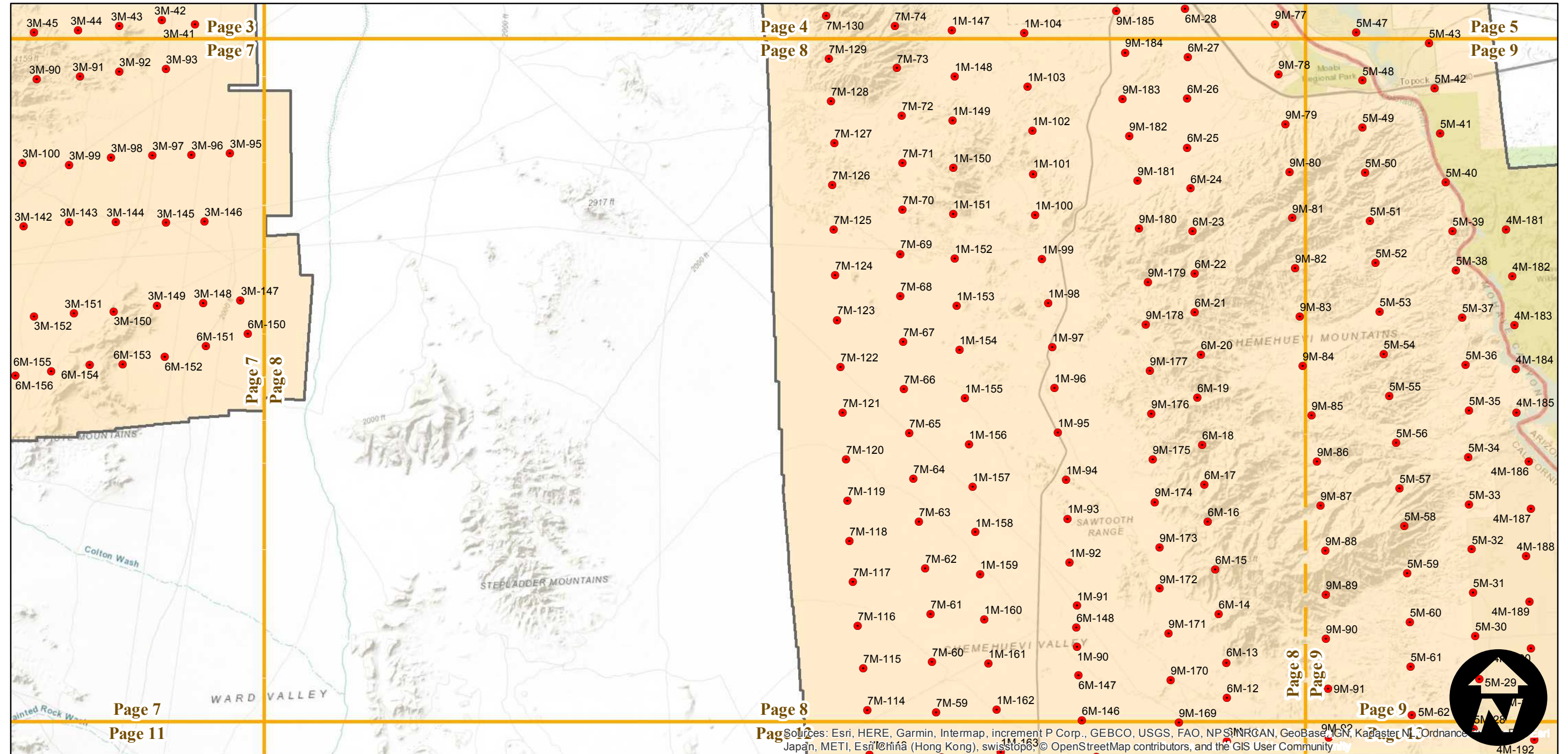
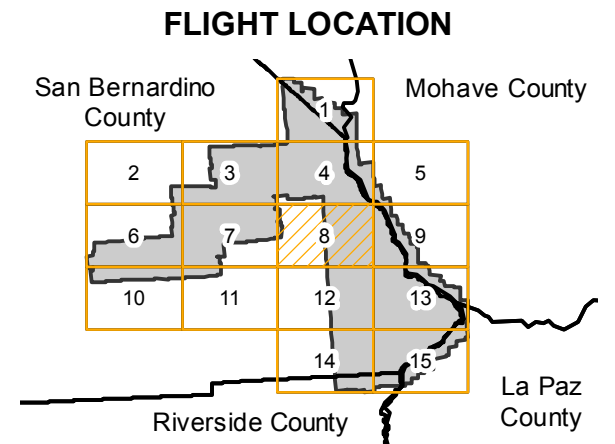


Sources: Esri, HERE, Garmin, Intermap, increment P Corp., GEBCO, USGS, FAO, NPS, NRCAN, GeoBase, IGN, Kadaster NL, Ordnance Survey, Esri China (Hong Kong), Swisstopo, © OpenStreetMap contributors, and the GIS User Community

AXL-1953A

Counties: San Bernardino, Riverside, Mohave (Arizona), La Paz (Arizona), Clark (Nevada)
Flight date(s): 05-05-1953 to 06-21-1953
Scale: 1: 20,000
Overlap: 60-80%

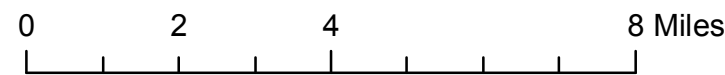
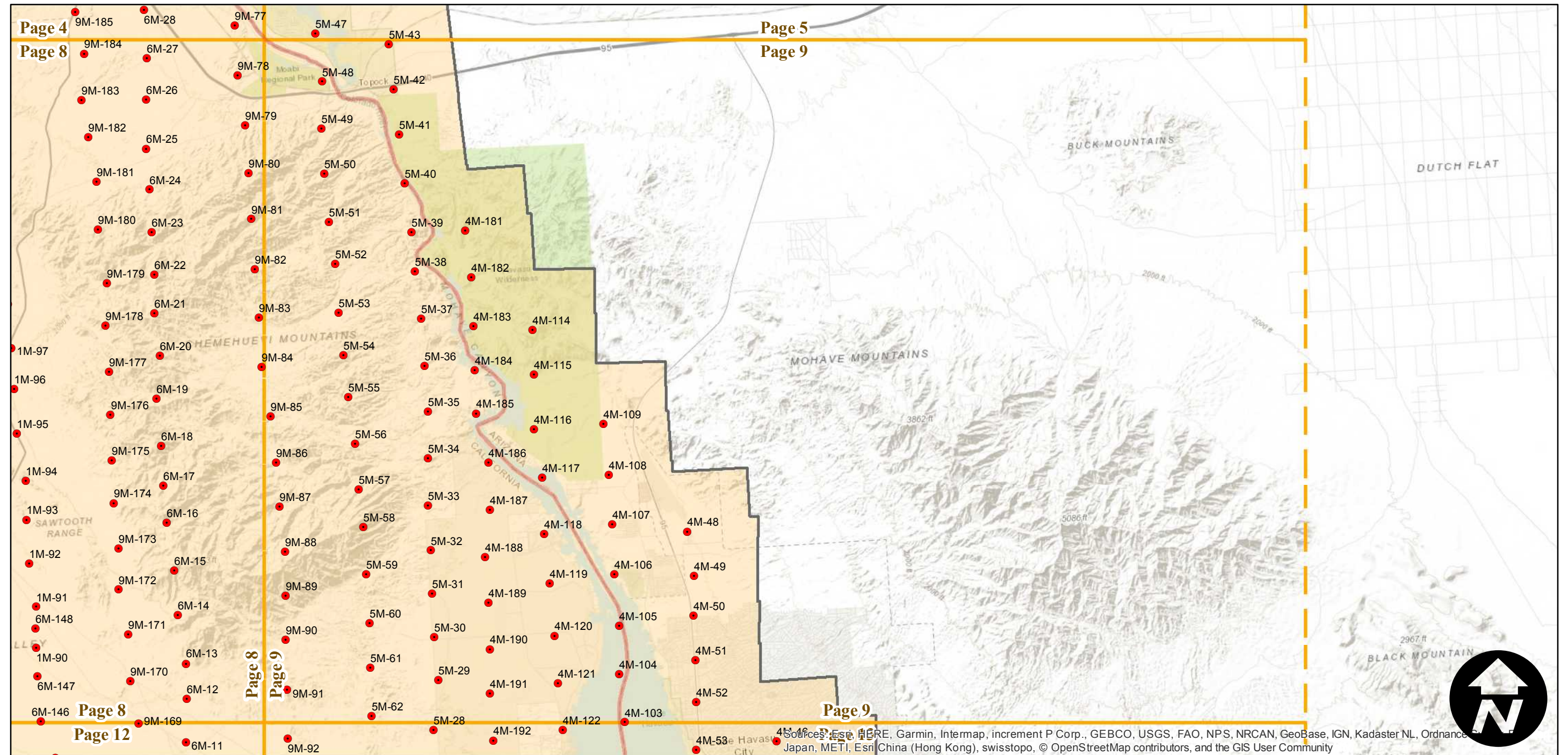
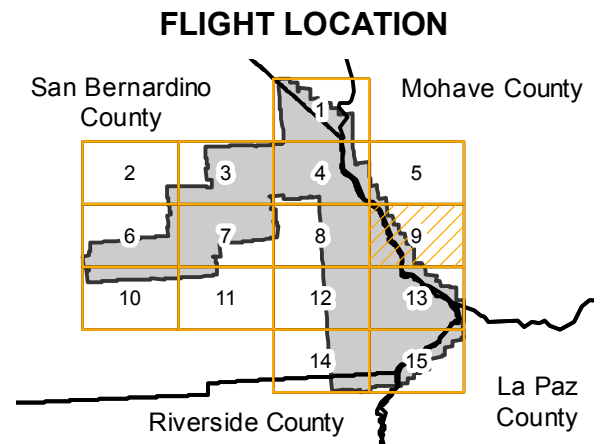
Note: Eastern San Bernardino County. Coverage includes Lake Havasu State Park, Needles, Sacramento Mountains, Vidal Valley, and more.



AXL-1953A

Counties: San Bernardino, Riverside, Mohave (Arizona), La Paz (Arizona), Clark (Nevada)
Flight date(s): 05-05-1953 to 06-21-1953
Scale: 1: 20,000
Overlap: 60-80%

Note: Eastern San Bernardino County. Coverage includes Lake Havasu State Park, Needles, Sacramento Mountains, Vidal Valley, and more.



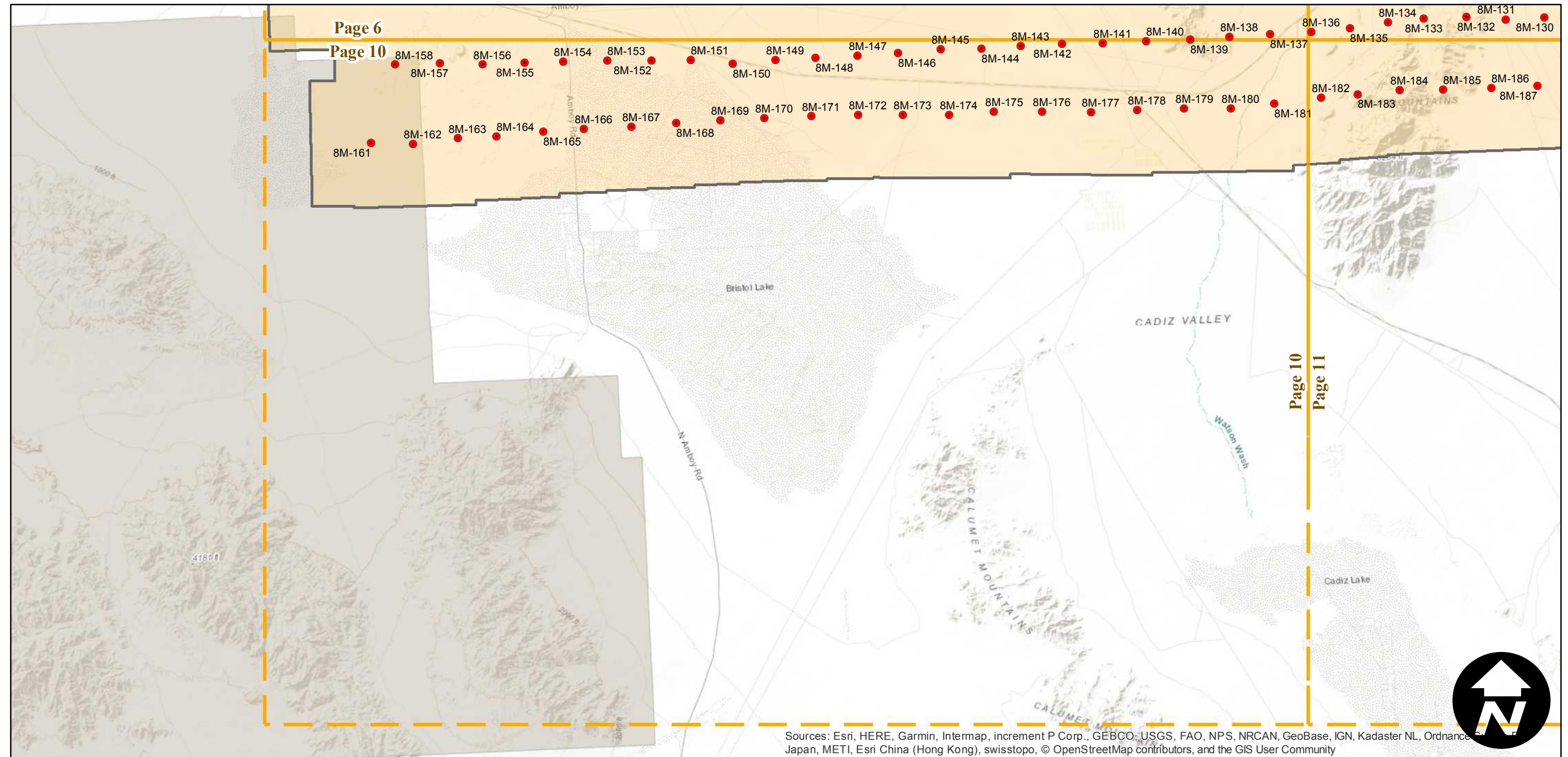
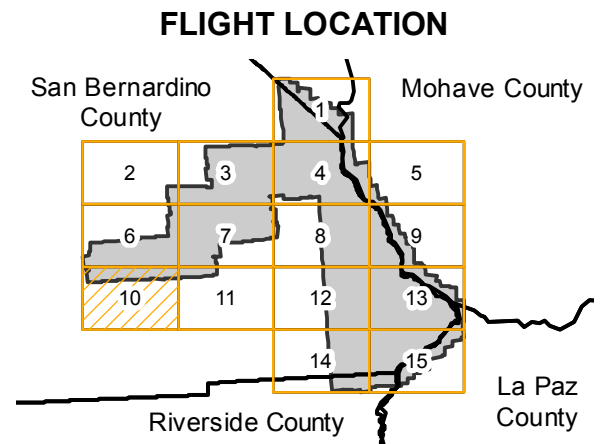
Sources: Esri, HERE, Garmin, Intermap, increment P Corp., GEBCO, USGS, FAO, NPS, NRCAN, GeoBase, IGN, Kadaster NL, Ordnance Survey, Esri Japan, METI, Esri China (Hong Kong), swisstopo, © OpenStreetMap contributors, and the GIS User Community



AXL-1953A

Counties: San Bernardino, Riverside, Mohave (Arizona), La Paz (Arizona),
Clark (Nevada)
Flight date(s): 05-05-1953 to 06-21-1953
Scale: 1: 20,000
Overlap: 60-80%

Note: Eastern San Bernardino County. Coverage includes
Lake Havasu State Park, Needles, Sacramento Mountains,
Vidal Valley, and more.



0 2 4 8 Miles

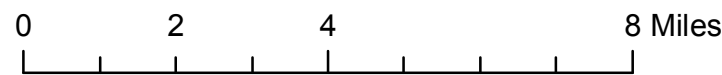
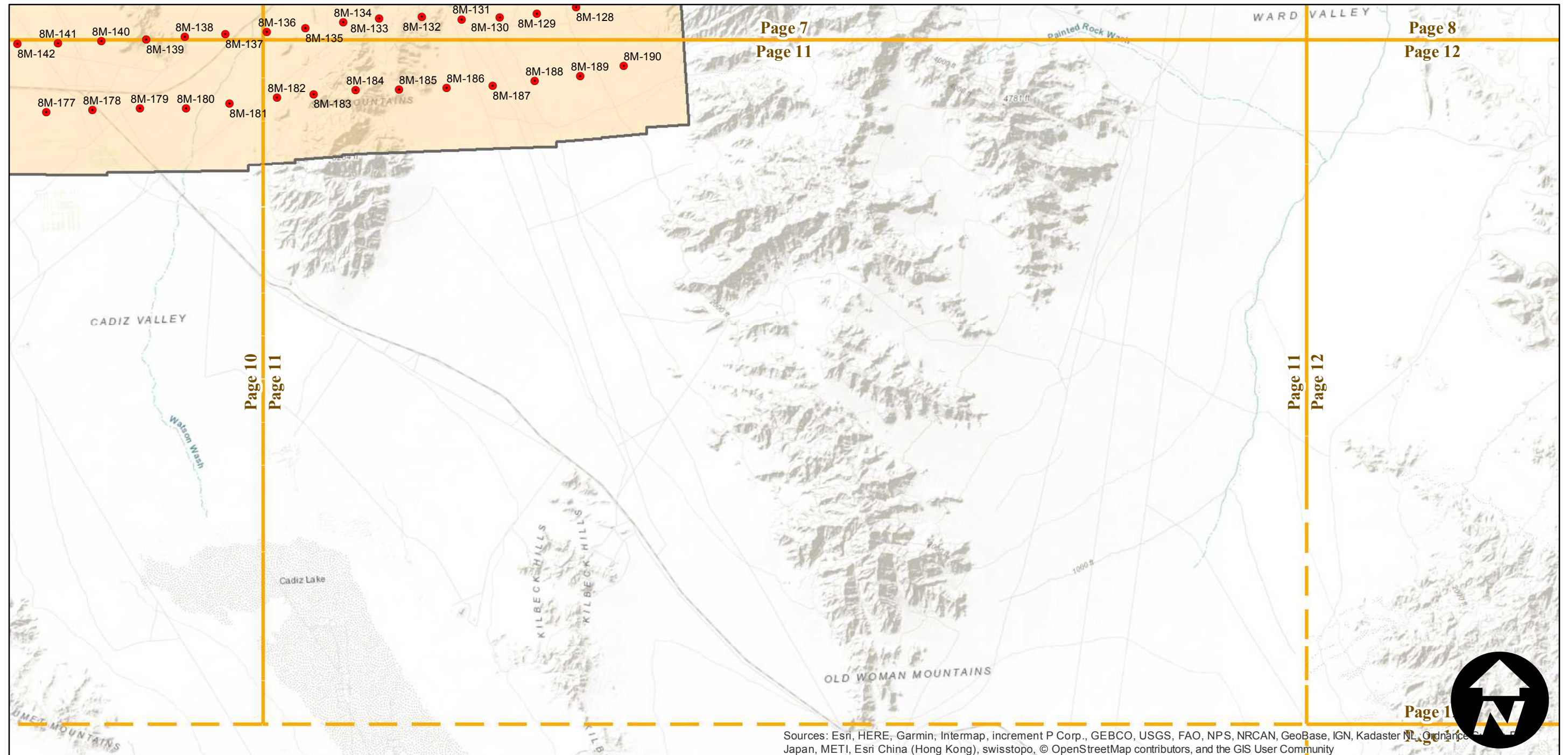
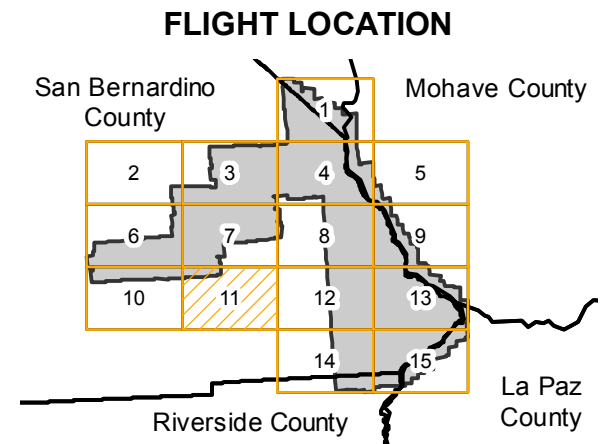
Index to Aerial Photography
Page 10 of 15

Scale of this index: 1:160,000

AXL-1953A

Counties: San Bernardino, Riverside, Mohave (Arizona), La Paz (Arizona), Clark (Nevada)
Flight date(s): 05-05-1953 to 06-21-1953
Scale: 1:20,000
Overlap: 60-80%

Note: Eastern San Bernardino County. Coverage includes Lake Havasu State Park, Needles, Sacramento Mountains, Vidal Valley, and more.

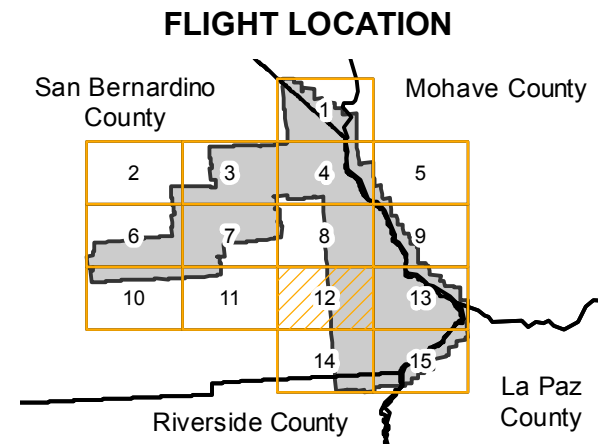


Sources: Esri, HERE, Garmin, Intermap, increment P Corp., GEBCO, USGS, FAO, NPS, NRCAN, GeoBase, IGN, Kadaster NL, Ordnance Survey, Esri Japan, METI, Esri China (Hong Kong), swisstopo, © OpenStreetMap contributors, and the GIS User Community

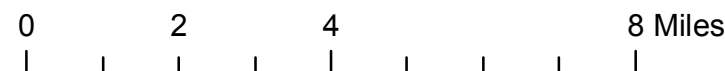
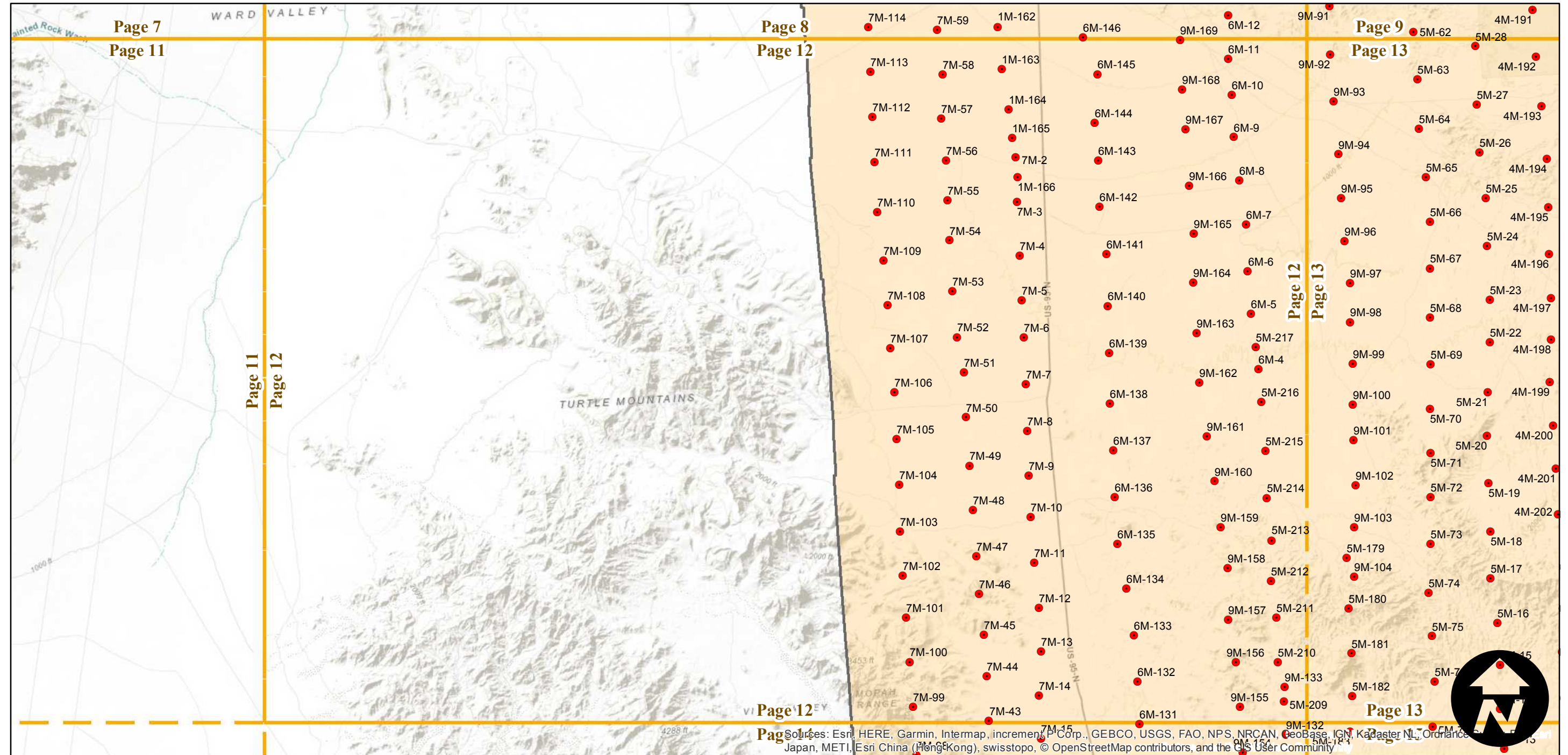
AXL-1953A

Counties: San Bernardino, Riverside, Mohave (Arizona), La Paz (Arizona), Clark (Nevada)
 Flight date(s): 05-05-1953 to 06-21-1953
 Scale: 1:20,000
 Overlap: 60-80%

Note: Eastern San Bernardino County. Coverage includes Lake Havasu State Park, Needles, Sacramento Mountains, Vidal Valley, and more.



Complete Metadata:
<https://www.library.ucsb.edu/src/airphotos/aerial-photography-information>



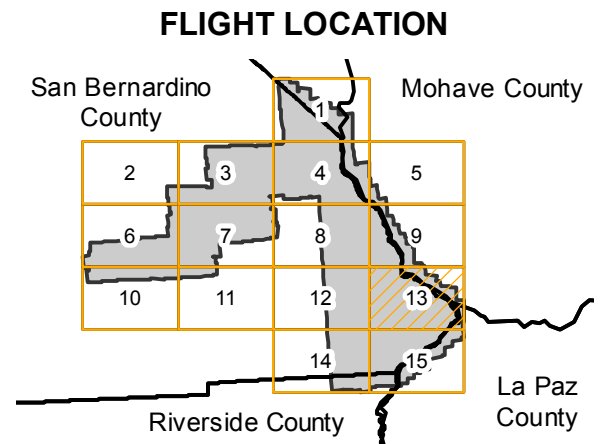
Sources: Esri, HERE, Garmin, Intermap, increment P Corp., GEBCO, USGS, FAO, NPS, NRCAN, GeoBase, IGN, Kadaster NL, Ordnance Survey, Esri Japan, METI, Esri China (Hong Kong), swisstopo, © OpenStreetMap contributors, and the GIS User Community



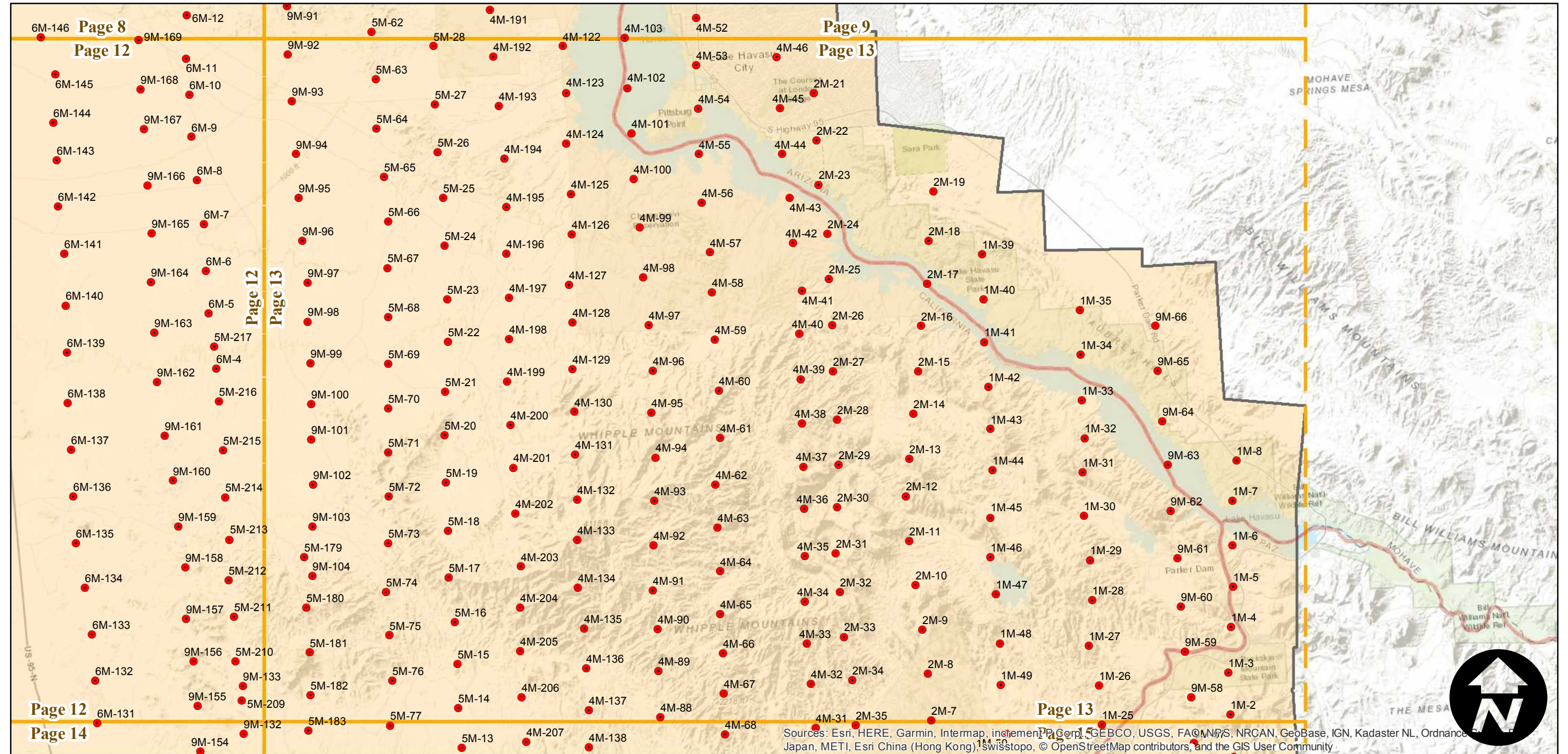
AXL-1953A

Counties: San Bernardino, Riverside, Mohave (Arizona), La Paz (Arizona), Clark (Nevada)
Flight date(s): 05-05-1953 to 06-21-1953
Scale: 1: 20,000
Overlap: 60-80%

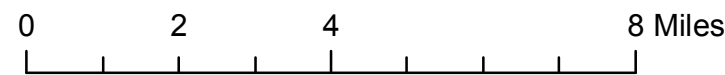
Note: Eastern San Bernardino County. Coverage includes Lake Havasu State Park, Needles, Sacramento Mountains, Vidal Valley, and more.



Complete Metadata:
<https://www.library.ucsb.edu/src/airphotos/aerial-photography-information>



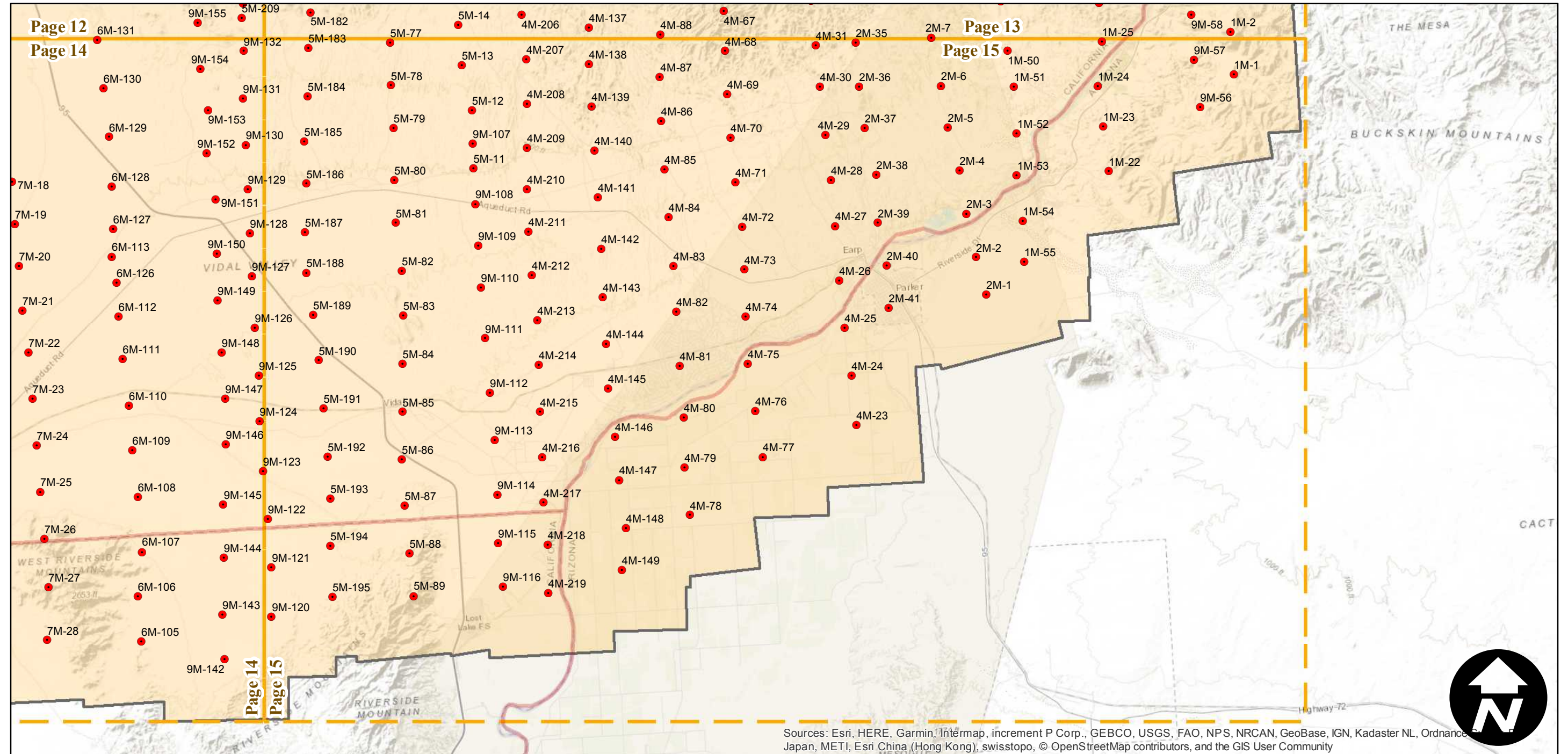
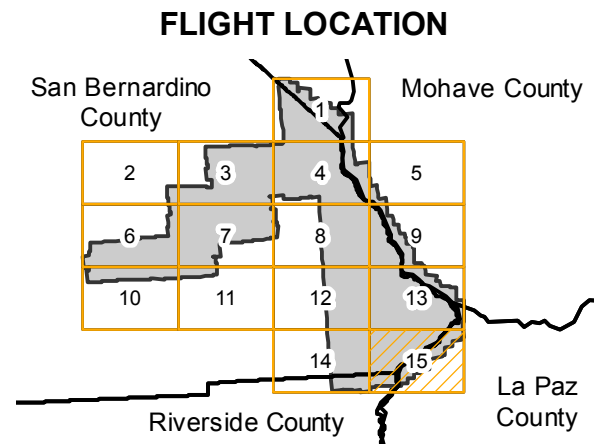
Sources: Esri, HERE, Garmin, Intermap, increment P Corp., GEBCO, USGS, FAO, NPS, NRCAN, GeoBase, IGN, Kadaster NL, Ordnance Survey, Esri Japan, METI, Esri China (Hong Kong), Swisstopo, © OpenStreetMap contributors, and the GIS User Community



AXL-1953A

Counties: San Bernardino, Riverside, Mohave (Arizona), La Paz (Arizona), Clark (Nevada)
Flight date(s): 05-05-1953 to 06-21-1953
Scale: 1:20,000
Overlap: 60-80%

Note: Eastern San Bernardino County. Coverage includes Lake Havasu State Park, Needles, Sacramento Mountains, Vidal Valley, and more.



Sources: Esri, HERE, Garmin, Intermap, increment P Corp., GEBCO, USGS, FAO, NPS, NRCAN, GeoBase, IGN, Kadaster NL, Ordnance Survey, Esri Japan, METI, Esri China (Hong Kong), swisstopo, © OpenStreetMap contributors, and the GIS User Community