

# AXJ 1959

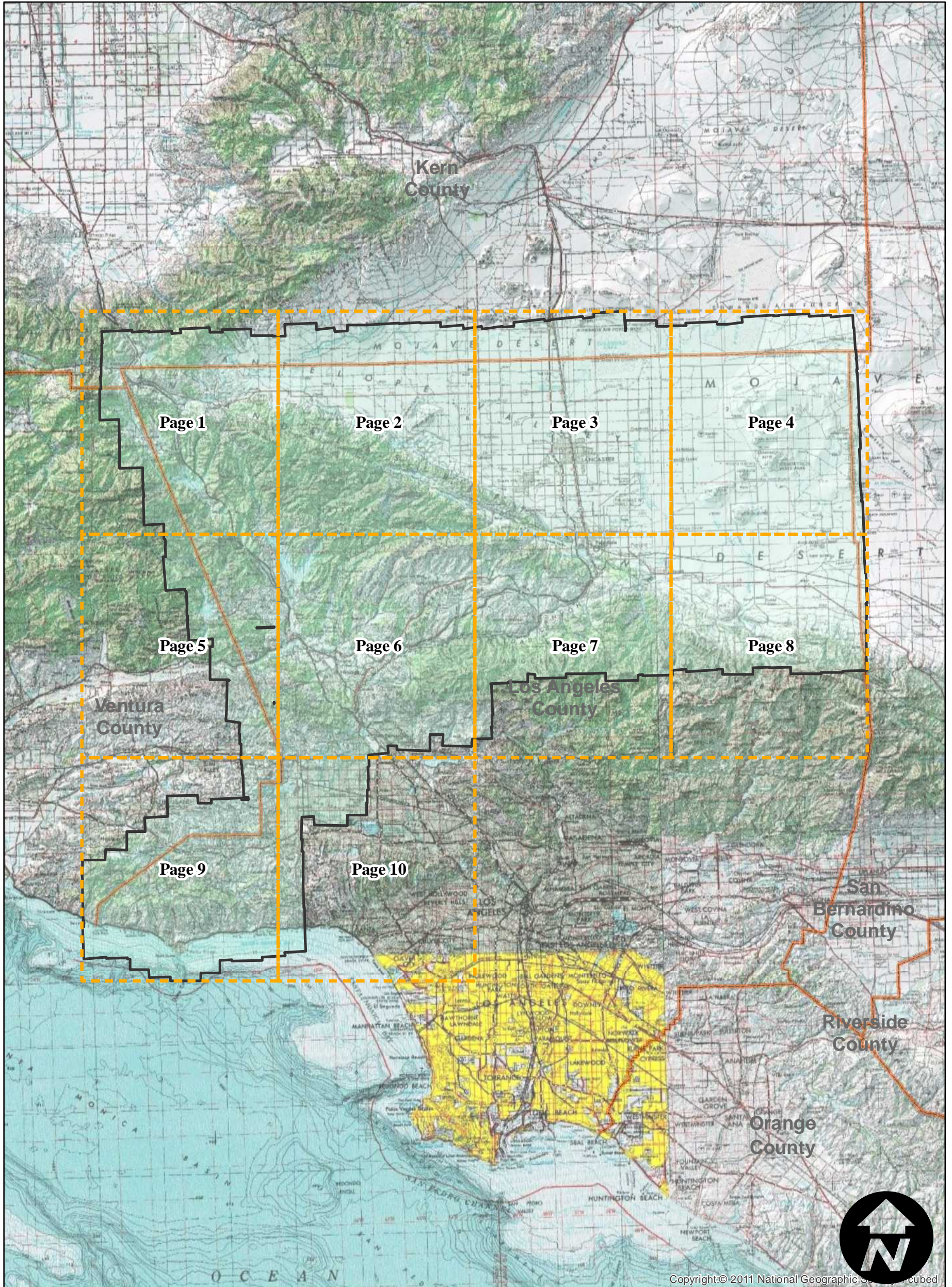
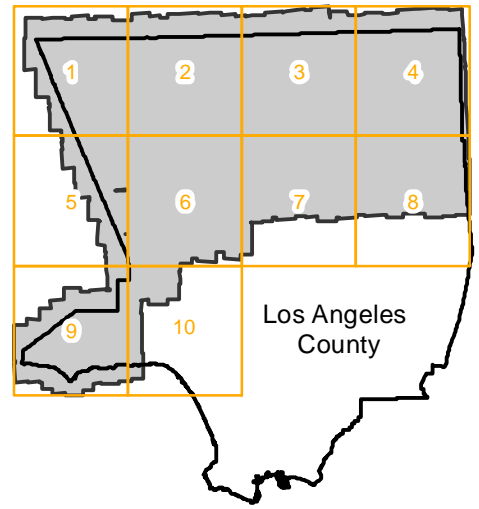
Counties: Los Angeles  
Flight date(s): 1959-01-01 to 1959-12-31  
Scale: 1: 20,000

Overlap: 60%

Complete Metadata:  
<http://www.library.ucsb.edu/mil/aerial-photography-tools>

Note: All frames held in MIL's collection as of April 1989.

## FLIGHT LOCATION



Copyright © 2011 National Geographic Society. All rights reserved.

0 2 4 8 12 16 20 Miles

Index to Aerial Photography  
Page Key

Scale of this index: 1:600,000

# AXJ 1959

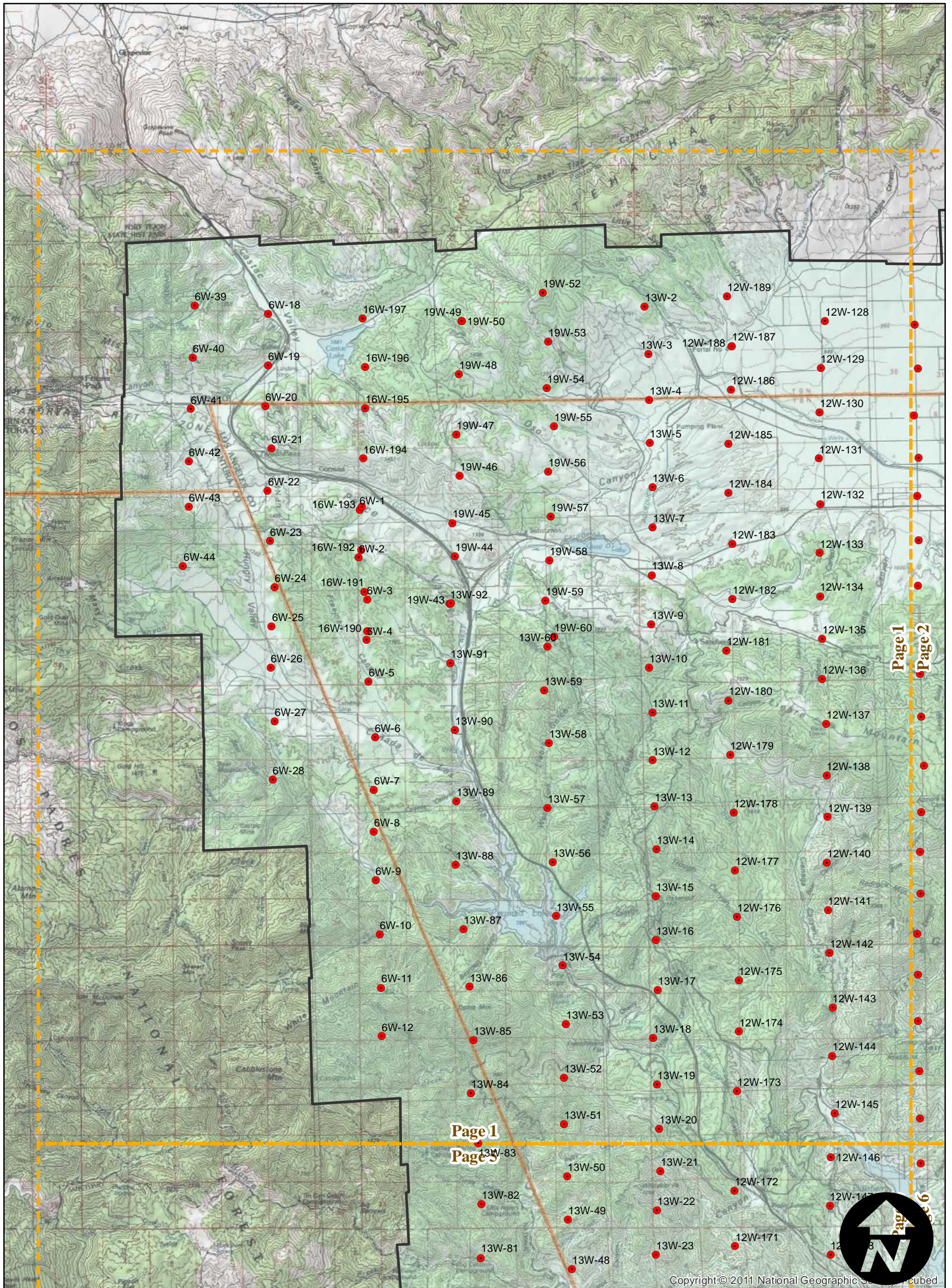
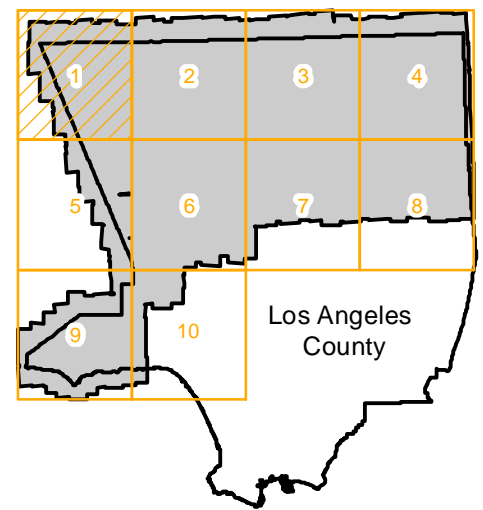
Counties: Los Angeles  
Flight date(s): 1959-01-01 to 1959-12-31  
Scale: 1: 20,000

Overlap: 60%

Complete Metadata:  
<http://www.library.ucsb.edu/mil/aerial-photography-tools>

Note: All frames held in MIL's collection as of April 1989.

## FLIGHT LOCATION



0 2.5 5 Miles

# AXJ 1959

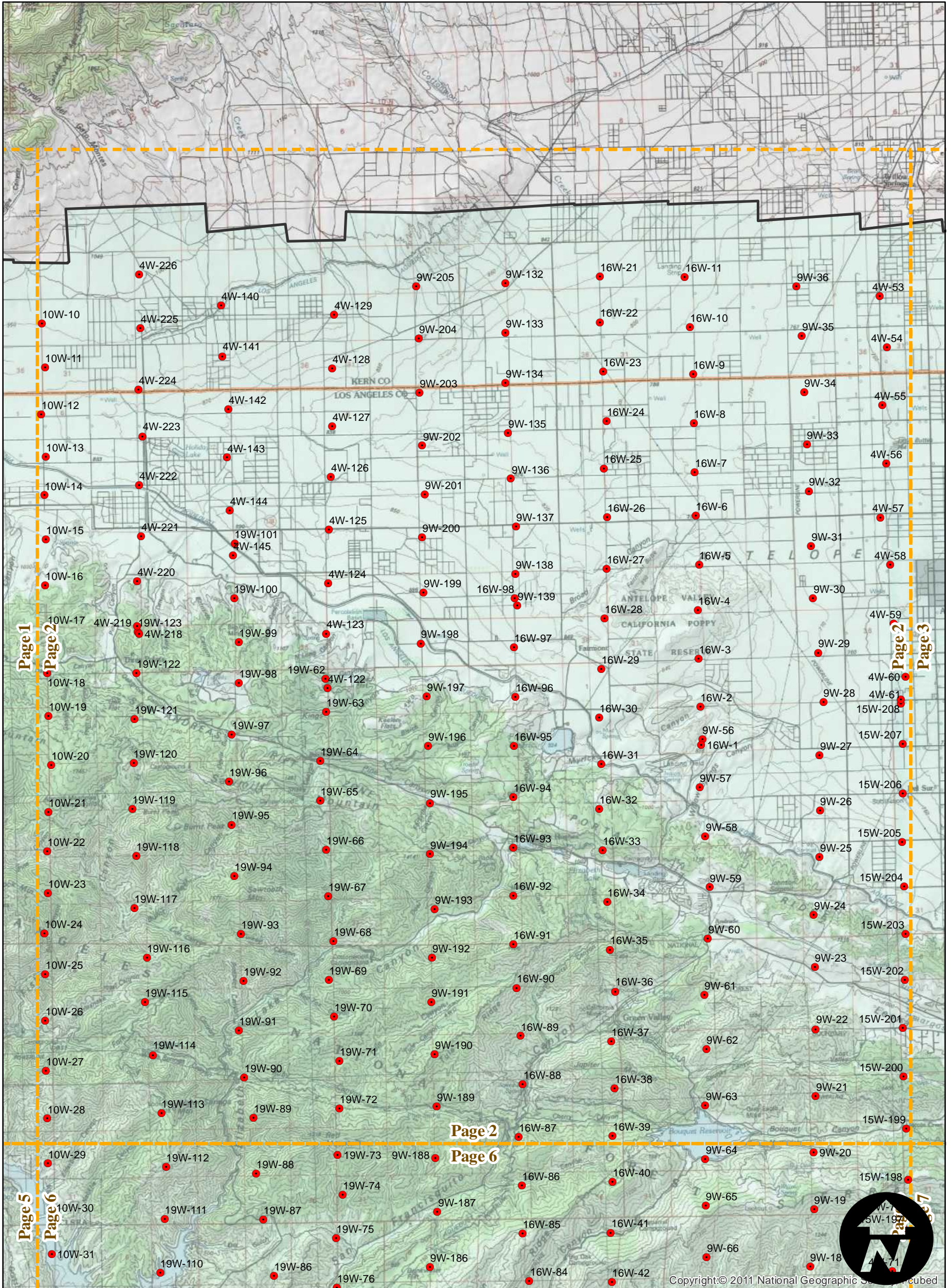
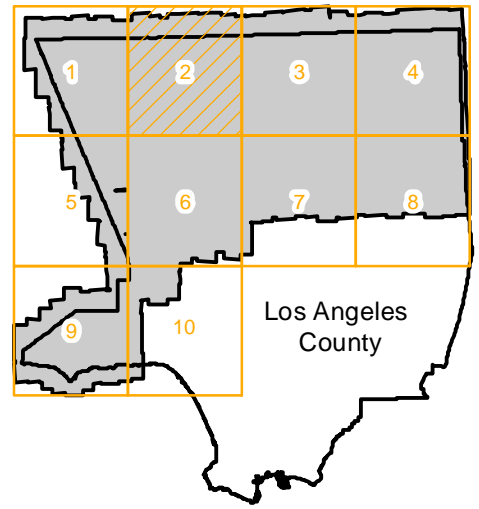
Counties: Los Angeles  
Flight date(s): 1959-01-01 to 1959-12-31  
Scale: 1: 20,000

Overlap: 60%

Complete Metadata:  
<http://www.library.ucsb.edu/mil/aerial-photography-tools>

Note: All frames held in MIL's collection as of April 1989.

## FLIGHT LOCATION



0 2.5 5 Miles

# AXJ 1959

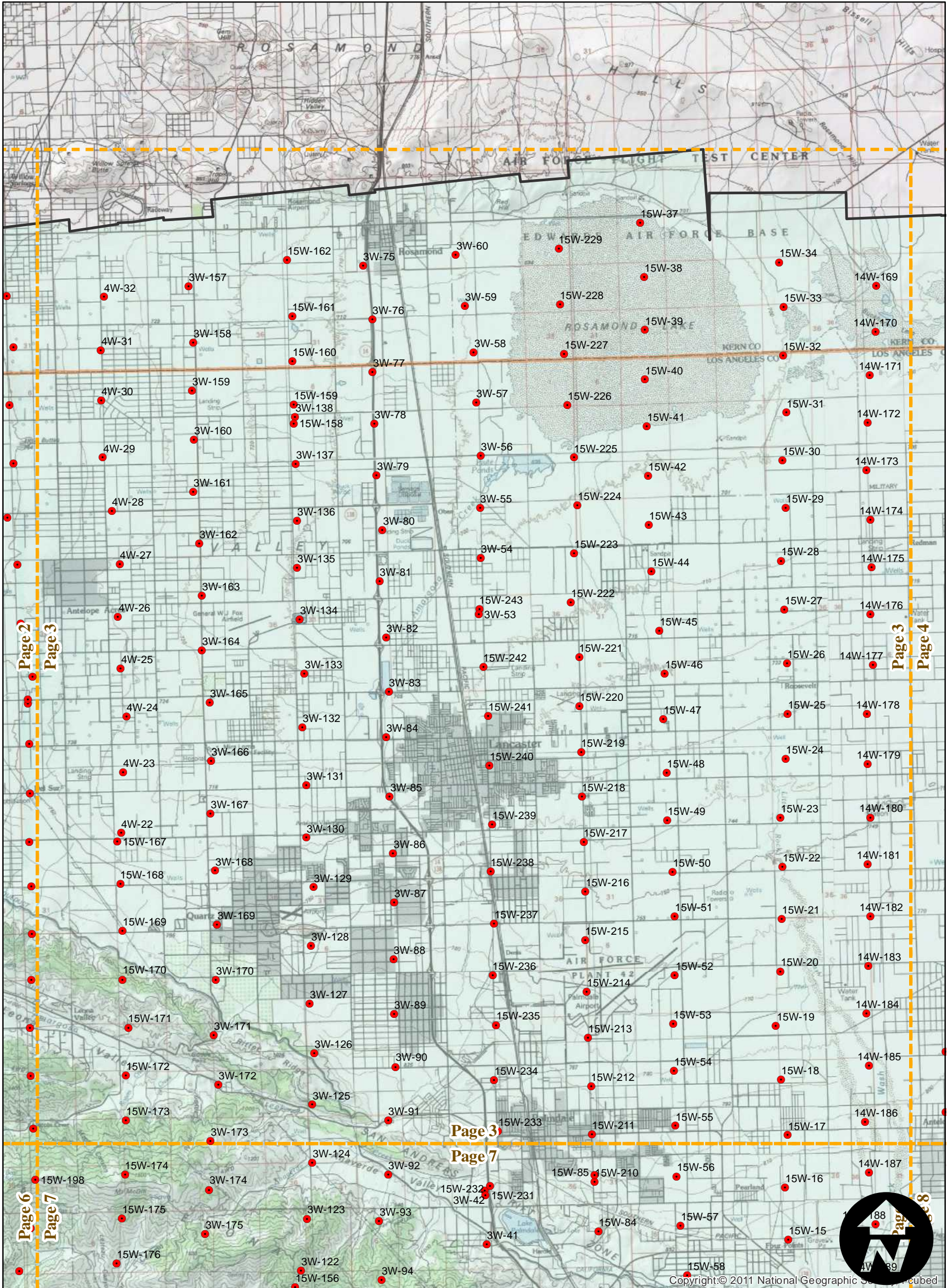
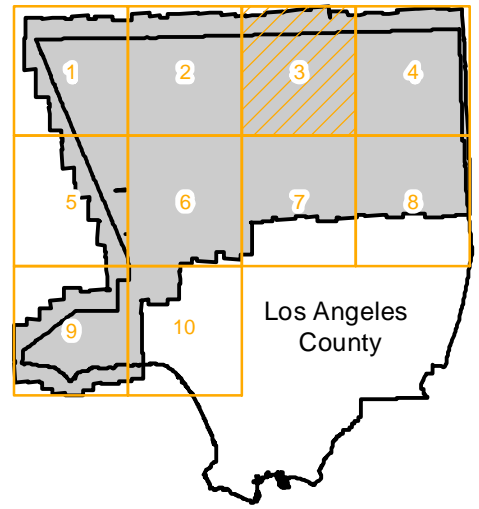
Counties: Los Angeles  
Flight date(s): 1959-01-01 to 1959-12-31  
Scale: 1: 20,000

Overlap: 60%

Complete Metadata:  
<http://www.library.ucsb.edu/mil/aerial-photography-tools>

Note: All frames held in MIL's collection as of April 1989.

## FLIGHT LOCATION



0 2.5 5 Miles



# AXJ 1959

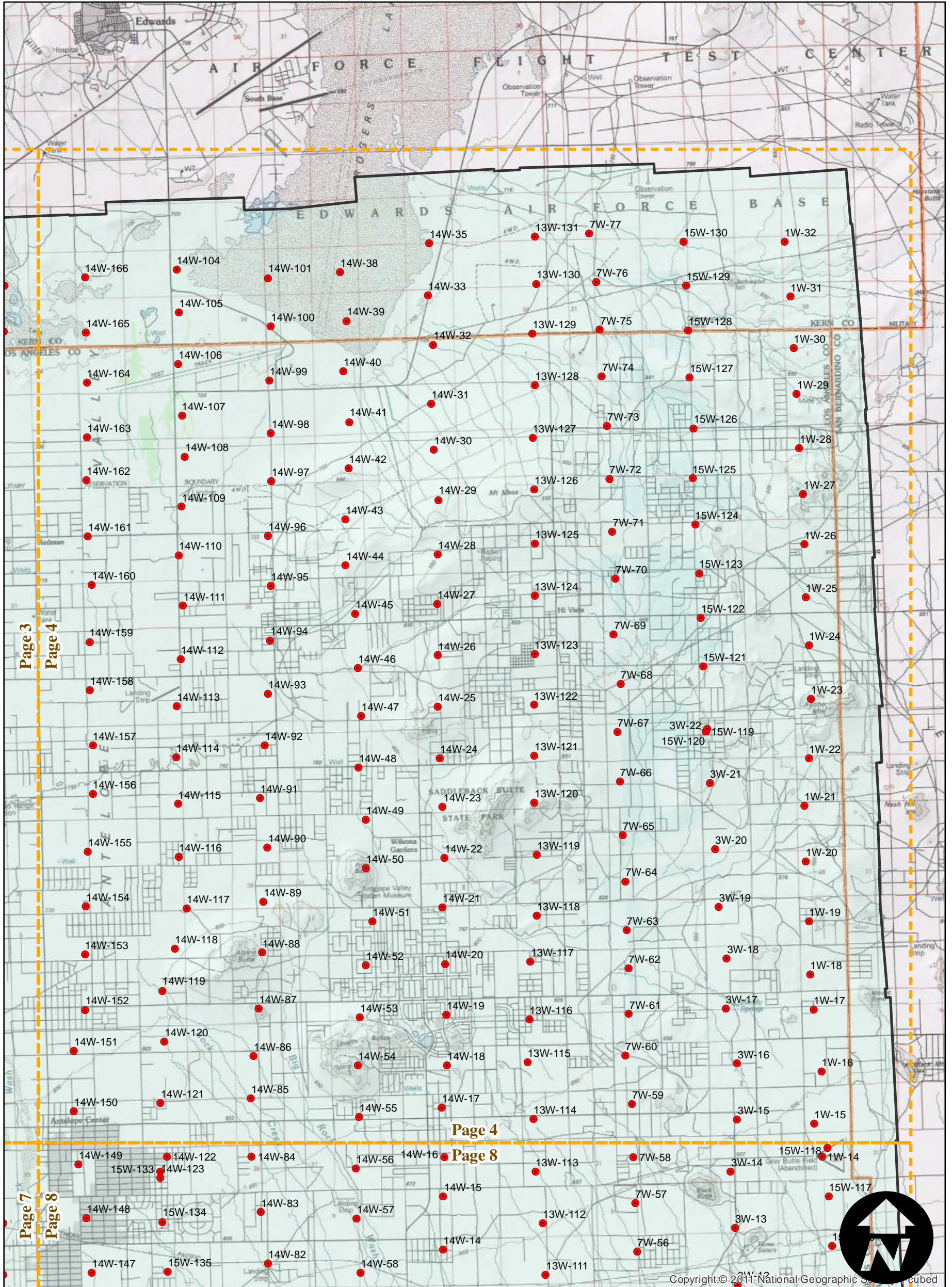
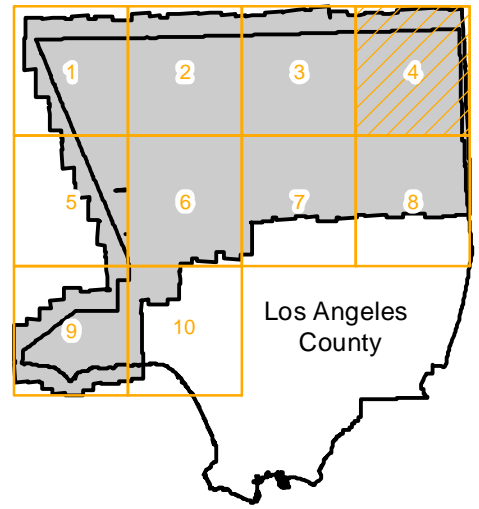
Counties: Los Angeles  
Flight date(s): 1959-01-01 to 1959-12-31  
Scale: 1: 20,000

Overlap: 60%

Complete Metadata:  
<http://www.library.ucsb.edu/mil/aerial-photography-tools>

Note: All frames held in MIL's collection as of April 1989.

## FLIGHT LOCATION



Copyright © 2011 National Geographic Society. All rights reserved.

0 2.5 5 Miles

Index to Aerial Photography  
Page 4 of 10

Scale of this index: 1:135,000

# AXJ 1959

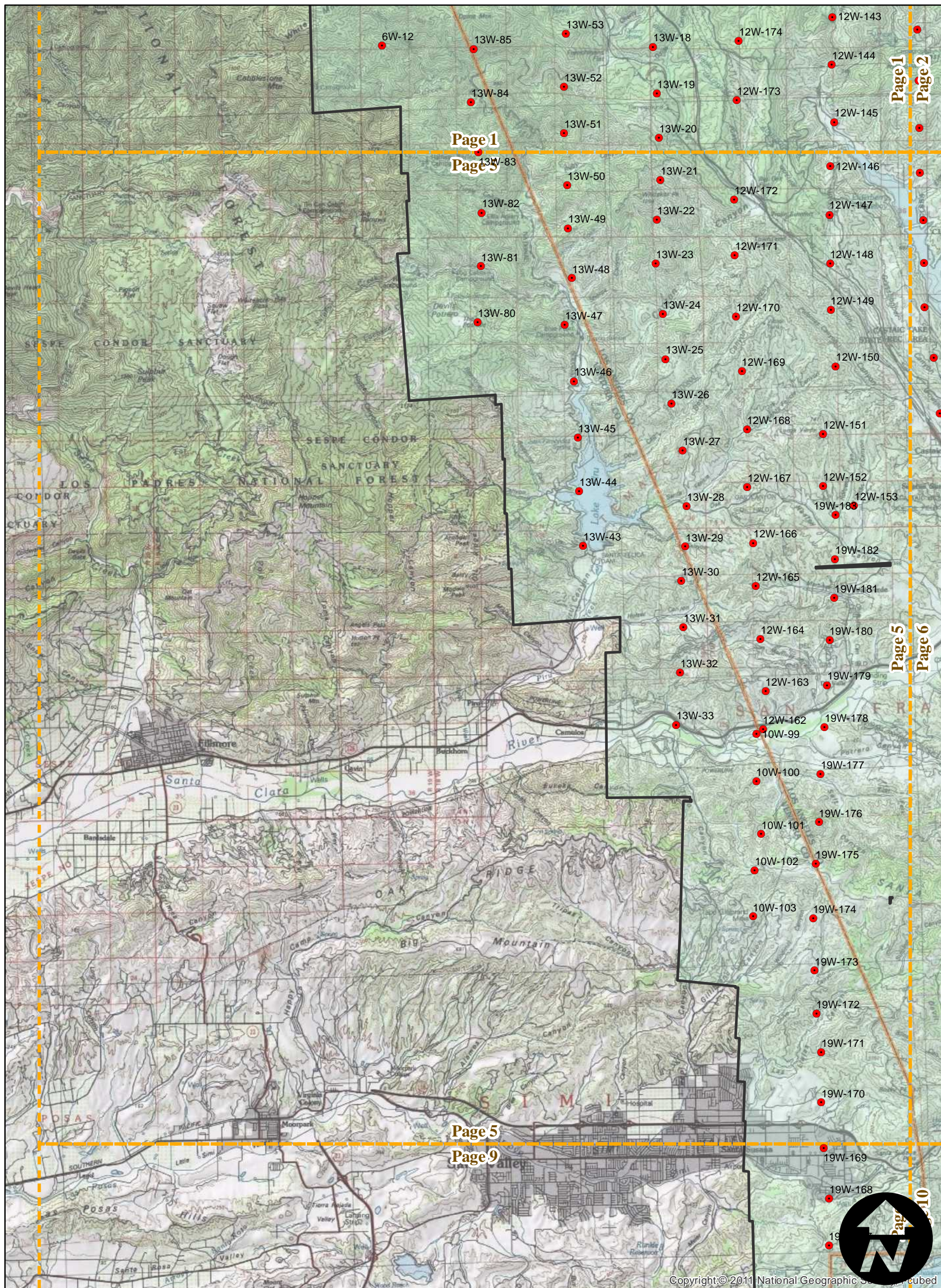
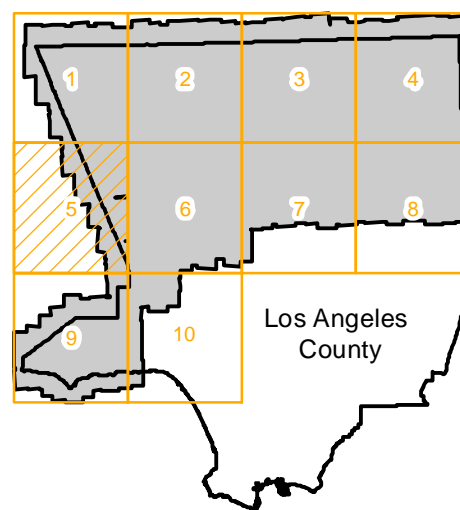
Counties: Los Angeles  
 Flight date(s): 1959-01-01 to 1959-12-31  
 Scale: 1:20,000

Note: All frames held in MIL's collection as of April 1989.

Overlap: 60%

Complete Metadata:  
<http://www.library.ucsb.edu/mil/aerial-photography-tools>

## FLIGHT LOCATION



0 2.5 5 Miles

# AXJ 1959

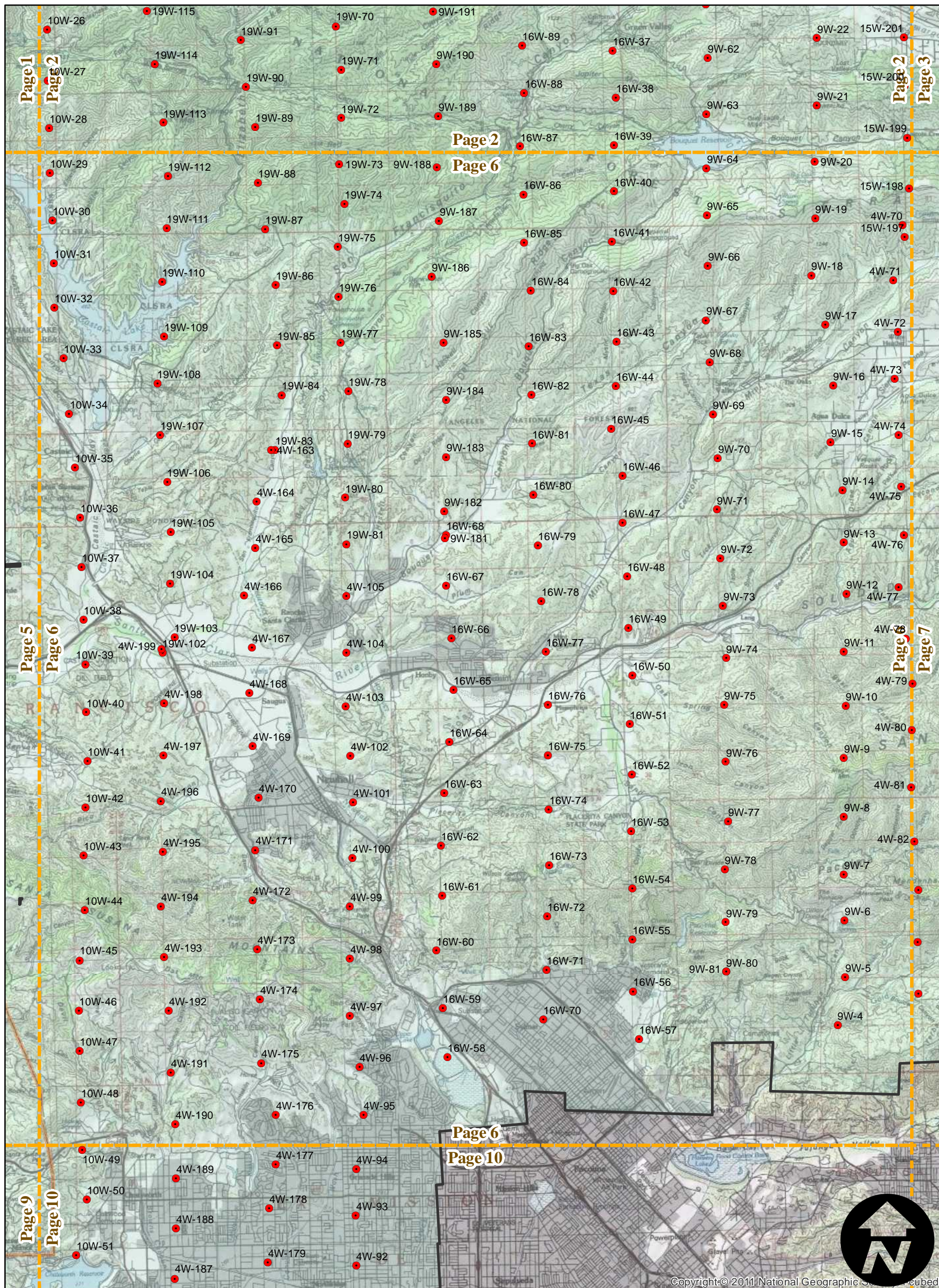
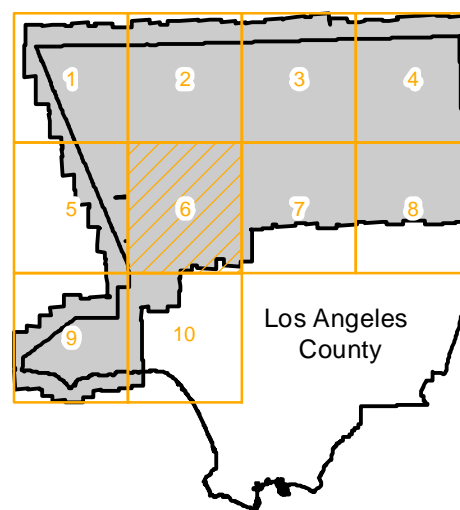
Counties: Los Angeles  
Flight date(s): 1959-01-01 to 1959-12-31  
Scale: 1: 20,000

Overlap: 60%

Complete Metadata:  
<http://www.library.ucsb.edu/mil/aerial-photography-tools>

Note: All frames held in MIL's collection as of April 1989.

## FLIGHT LOCATION



0 2.5 5 Miles

Index to Aerial Photography  
Page 6 of 10

Scale of this index: 1:135,000

# AXJ 1959

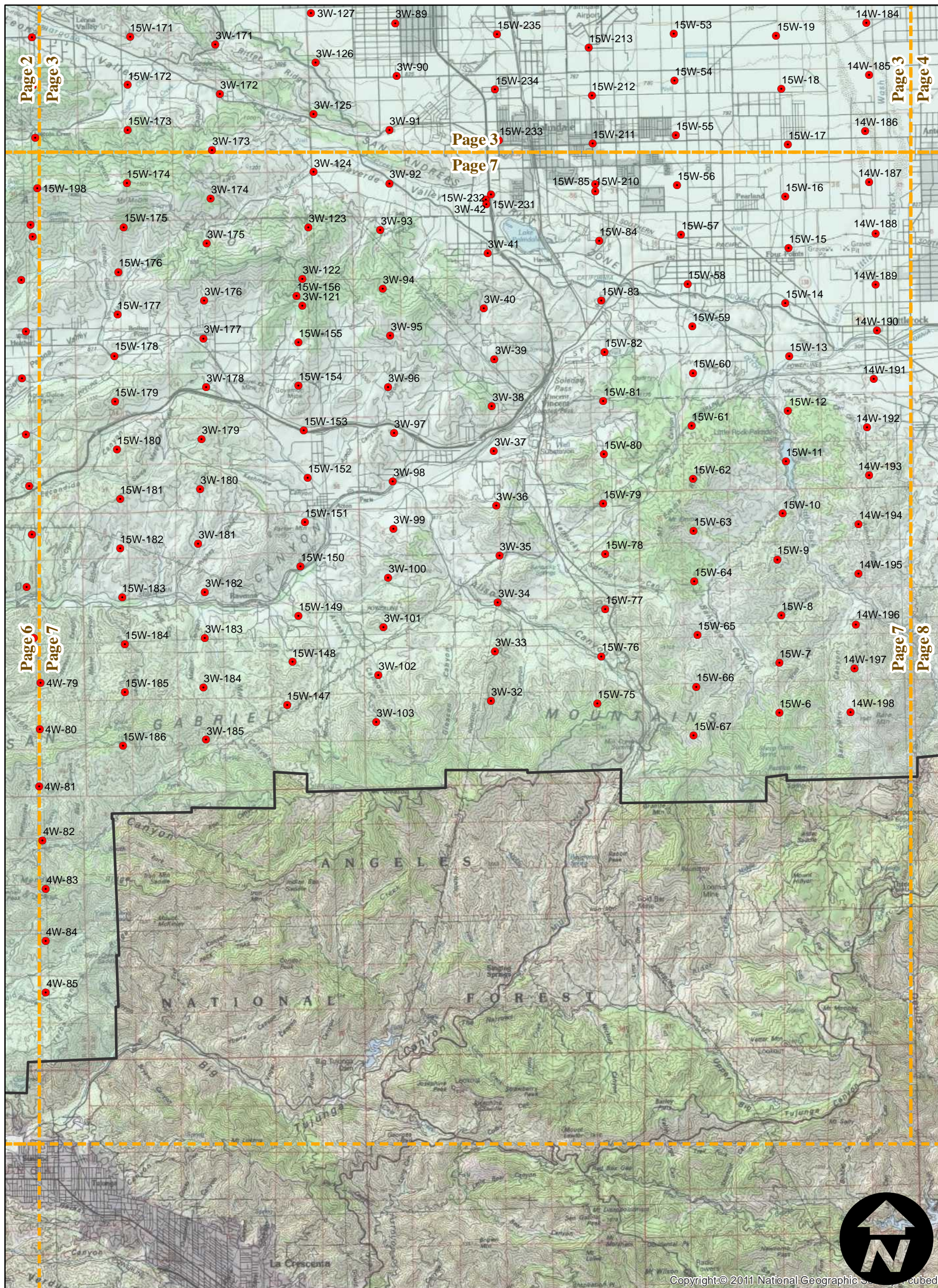
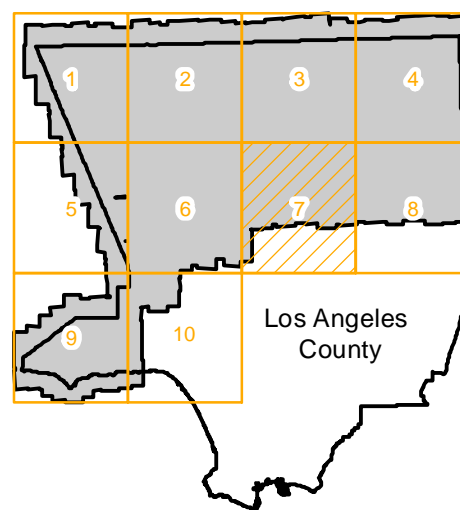
Counties: Los Angeles  
 Flight date(s): 1959-01-01 to 1959-12-31  
 Scale: 1: 20,000

Note: All frames held in MIL's collection as of April 1989.

Overlap: 60%

Complete Metadata:  
<http://www.library.ucsb.edu/mil/aerial-photography-tools>

## FLIGHT LOCATION



0 2.5 5 Miles



# AXJ 1959

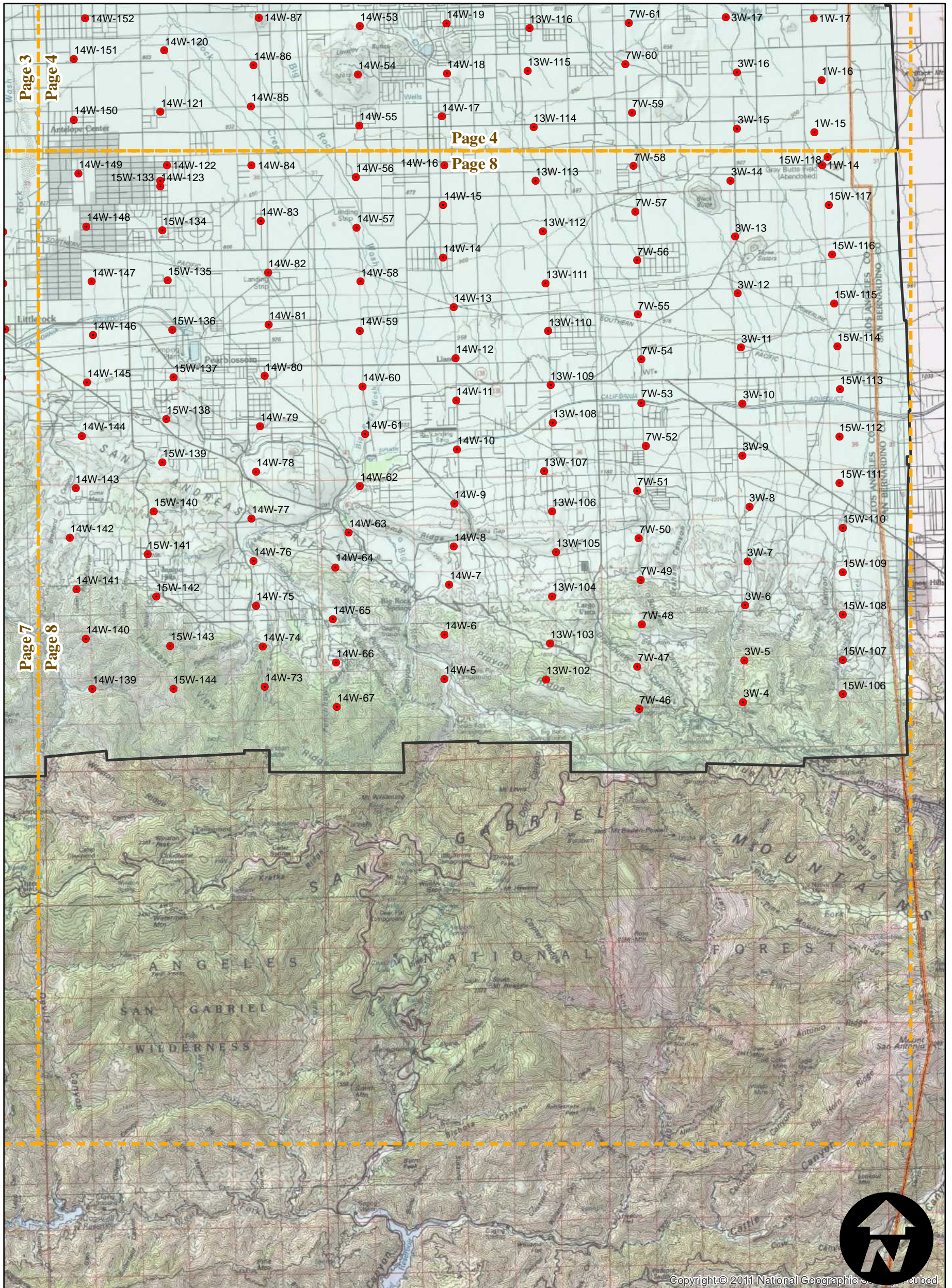
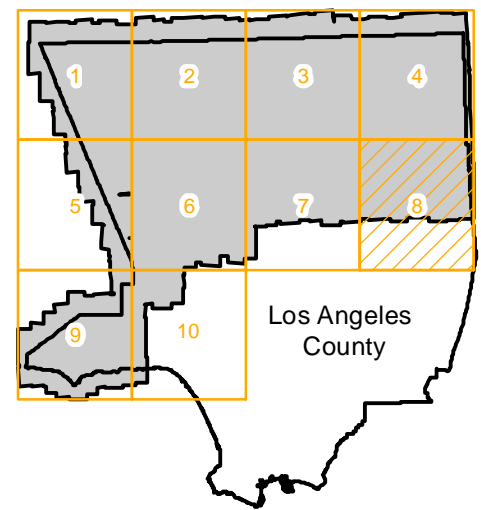
Counties: Los Angeles  
Flight date(s): 1959-01-01 to 1959-12-31  
Scale: 1: 20,000

Overlap: 60%

Complete Metadata:  
<http://www.library.ucsb.edu/mil/aerial-photography-tools>

Note: All frames held in MIL's collection as of April 1989.

## FLIGHT LOCATION



0 2.5 5 Miles

# AXJ 1959

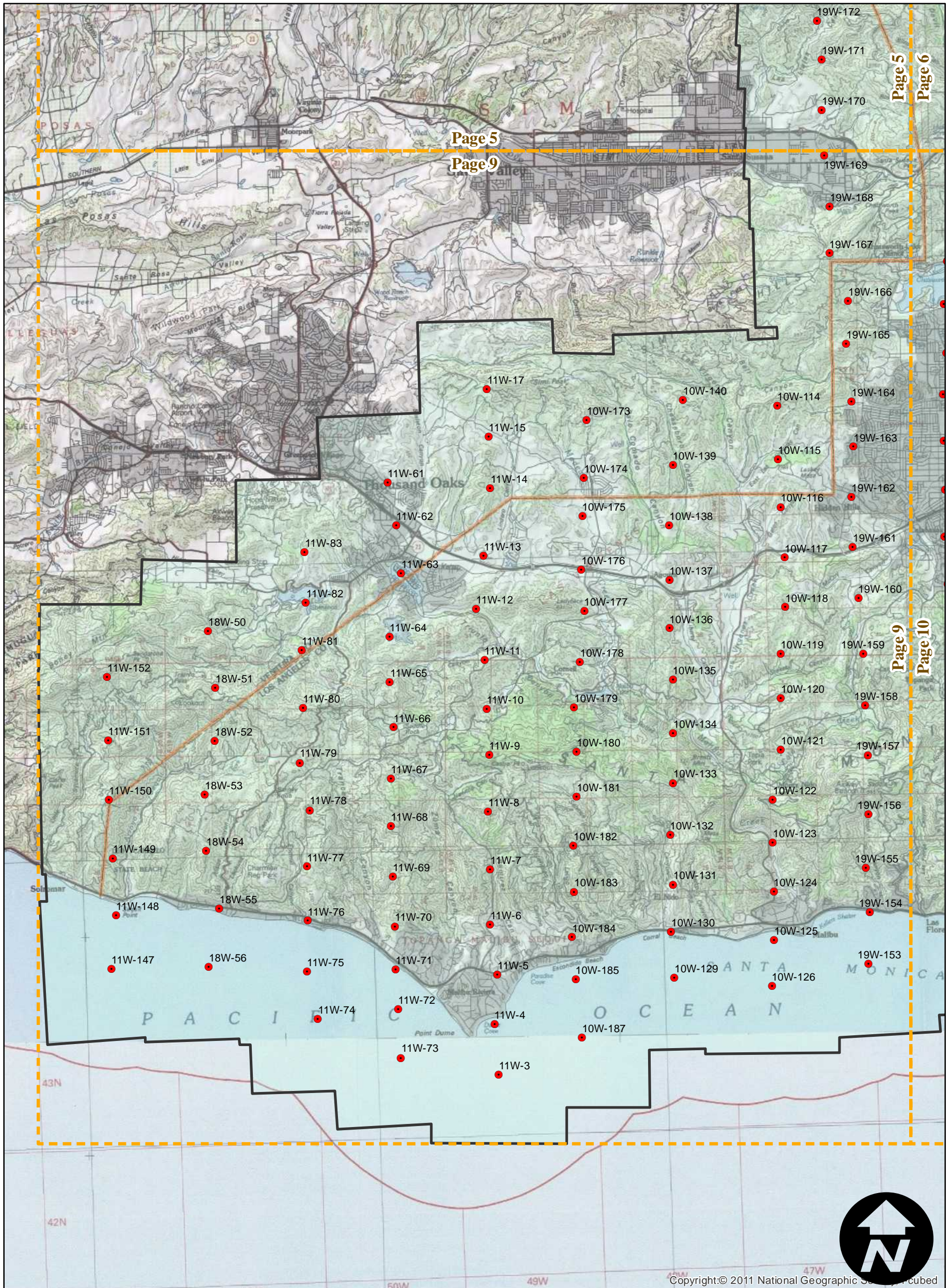
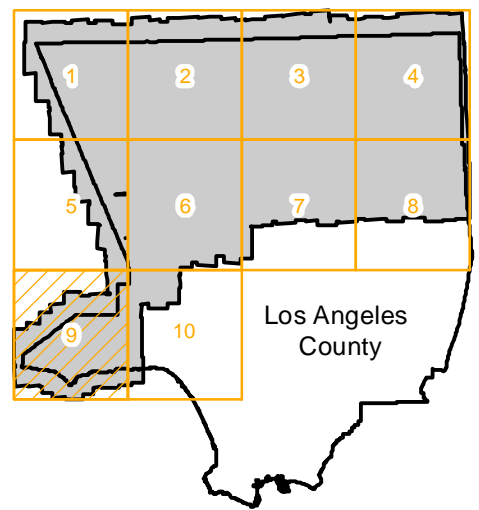
Counties: Los Angeles  
Flight date(s): 1959-01-01 to 1959-12-31  
Scale: 1: 20,000

Overlap: 60%

Complete Metadata:  
<http://www.library.ucsb.edu/mil/aerial-photography-tools>

Note: All frames held in MIL's collection as of April 1989.

## FLIGHT LOCATION



0 2.5 5 Miles

# AXJ 1959

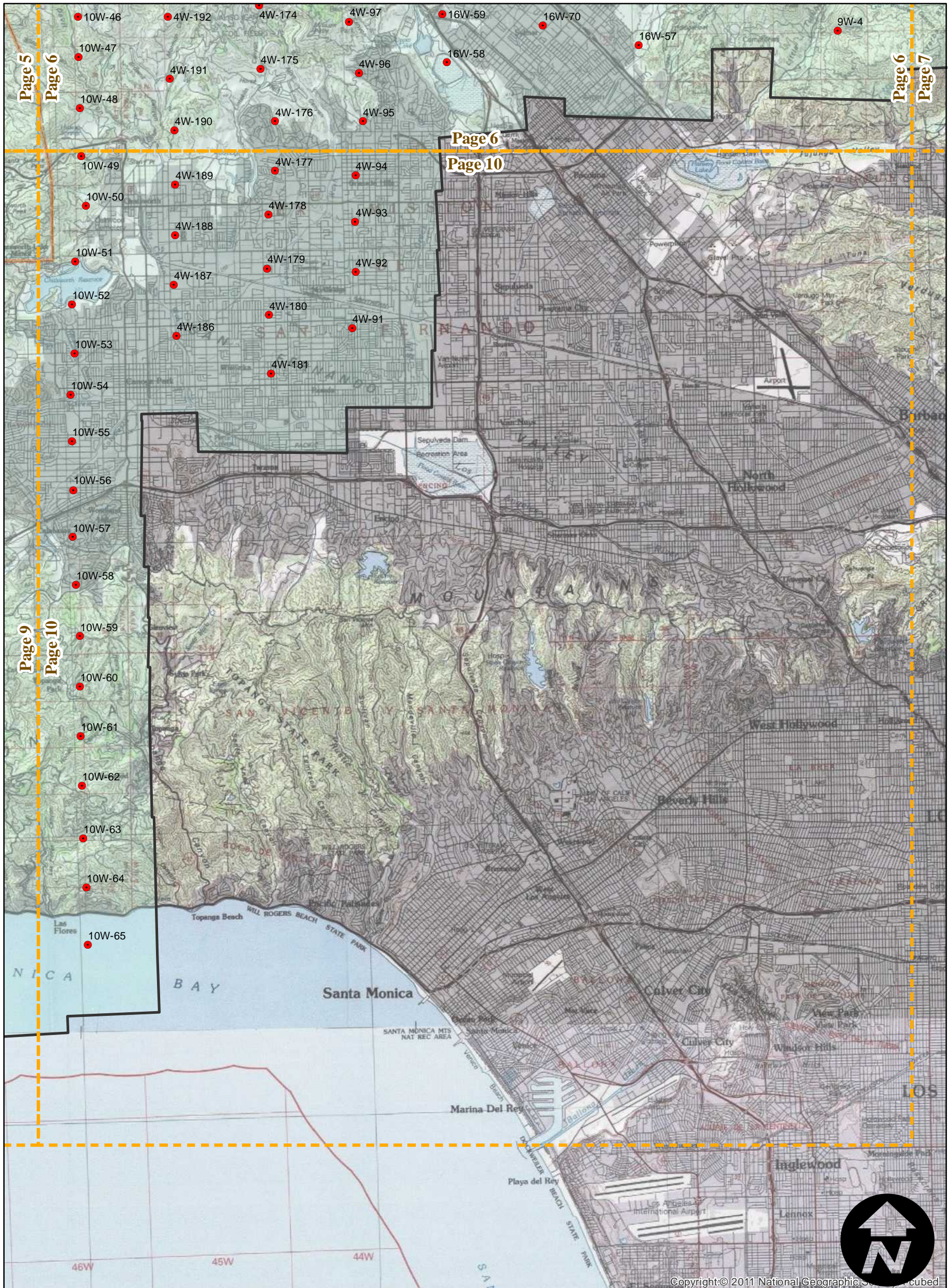
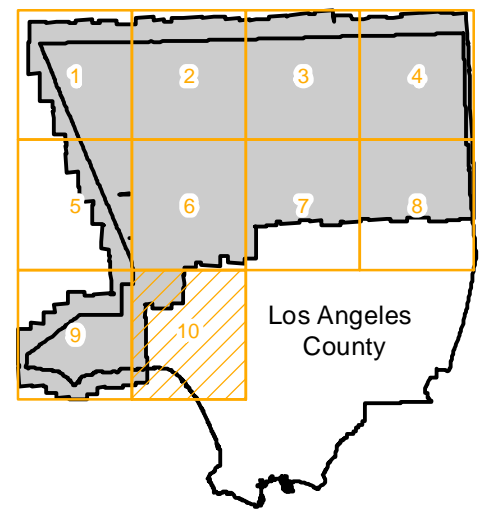
Counties: Los Angeles  
Flight date(s): 1959-01-01 to 1959-12-31  
Scale: 1: 20,000

Overlap: 60%

Complete Metadata:  
<http://www.library.ucsb.edu/mil/aerial-photography-tools>

Note: All frames held in MIL's collection as of April 1989.

## FLIGHT LOCATION



0 2.5 5 Miles