

# AXJ-1940

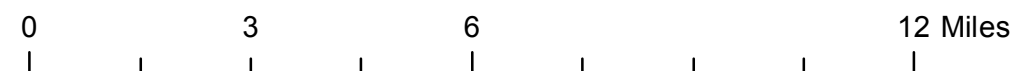
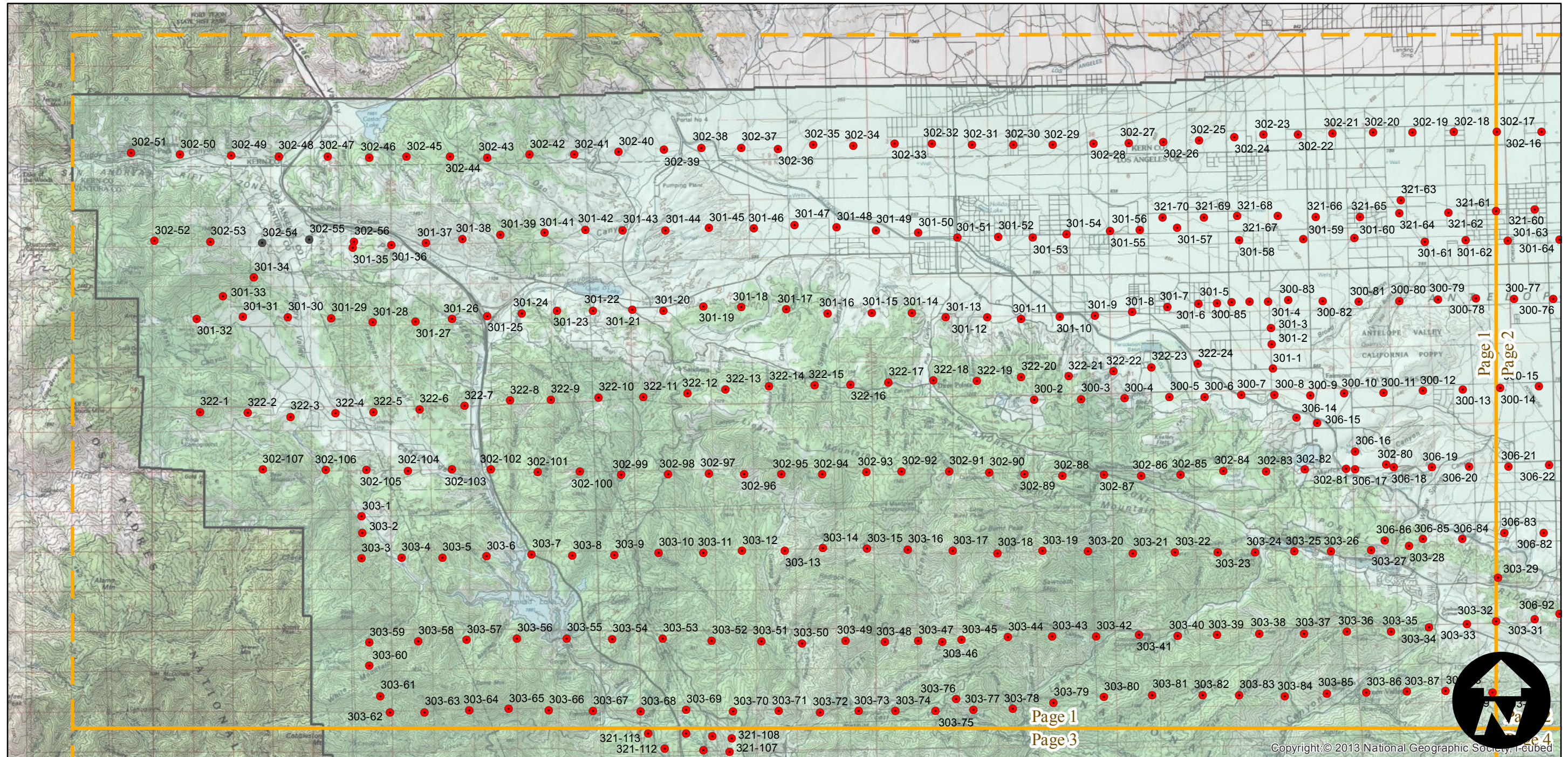
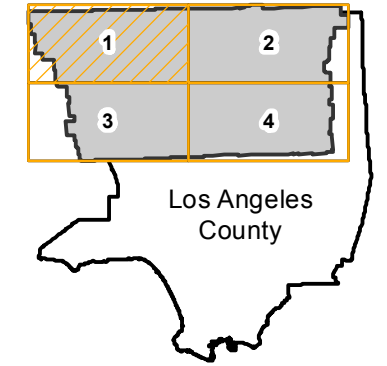
Counties: Los Angeles  
Flight date(s): 04-30-1940 to 05-16-1940  
Scale: 1:20,000  
Overlap: 60%

Complete Metadata:  
<http://www.library.ucsb.edu/mil/aerial-photography-tools>

Imagery from Fairchild Aerial Surveys flight C-6500 incorporated into this flight. Overlap within flightlines is not consistent. Oversize (16" x 16") 4-part enlarged prints filed at Annex 3. Prints and nitrate negatives acquired from Whittier College, January 2013.

- MIL owns frame
- MIL does not own frame

## FLIGHT LOCATION



# AXJ-1940

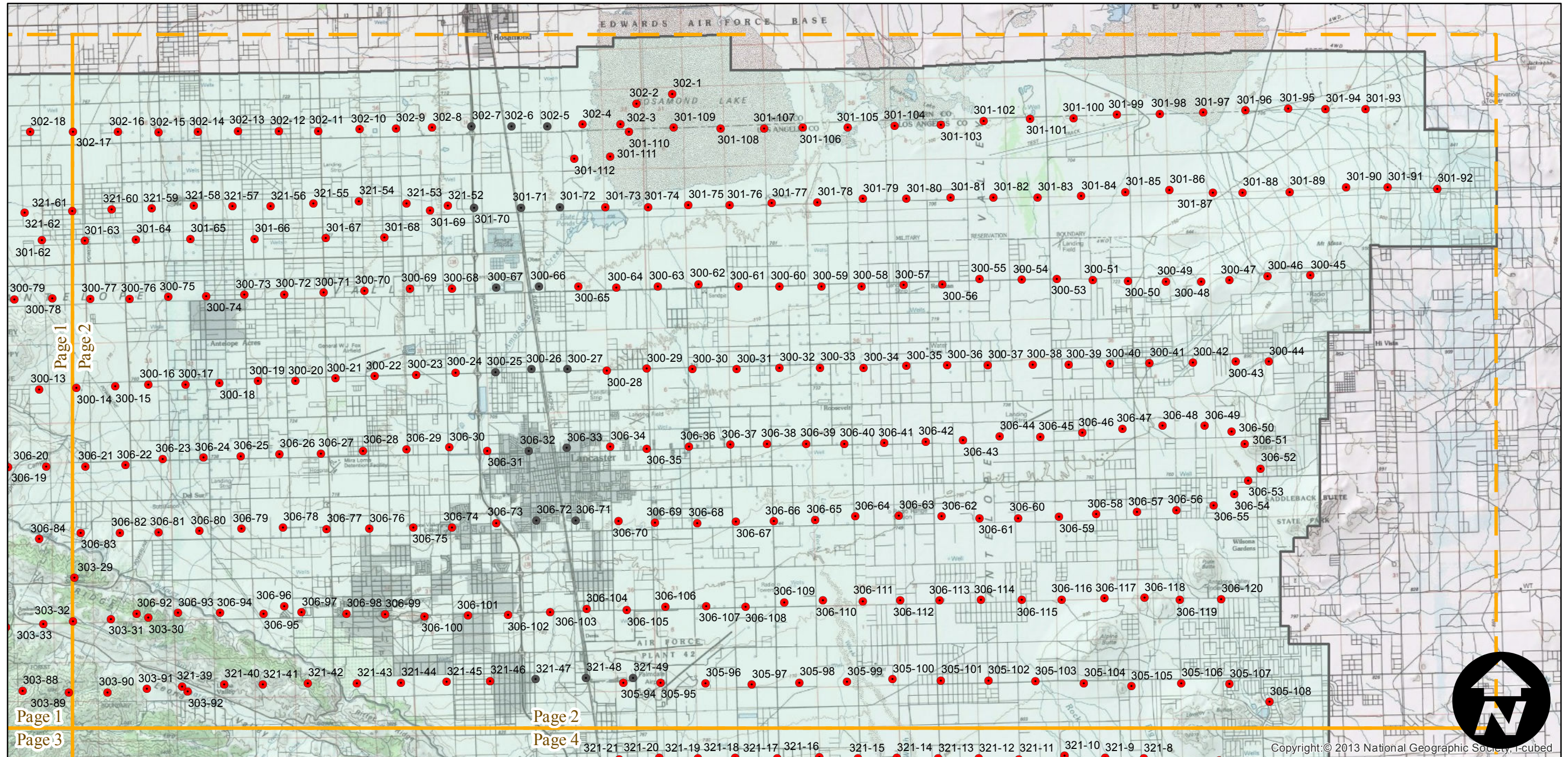
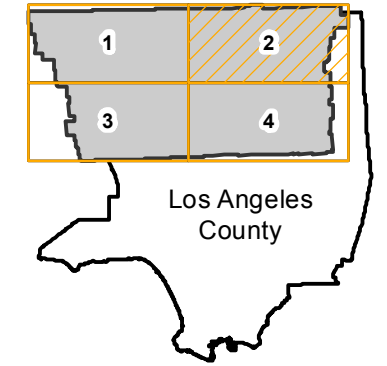
Counties: Los Angeles  
Flight date(s): 04-30-1940 to 05-16-1940  
Scale: 1:20,000  
Overlap: 60%

Complete Metadata:  
<http://www.library.ucsb.edu/mil/aerial-photography-tools>

Imagery from Fairchild Aerial Surveys flight C-6500 incorporated into this flight. Overlap within flightlines is not consistent. Oversize (16" x 16") 4-part enlarged prints filed at Annex 3. Prints and nitrate negatives acquired from Whittier College, January 2013.

- MIL owns frame
- MIL does not own frame

## FLIGHT LOCATION



0 3 6 12 Miles

Index to Aerial Photography  
Page 2 of 4

Scale of this index: 1:165,000

# AXJ-1940

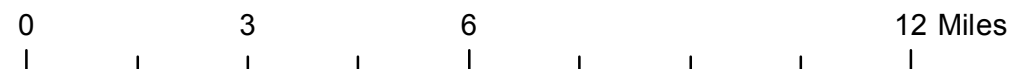
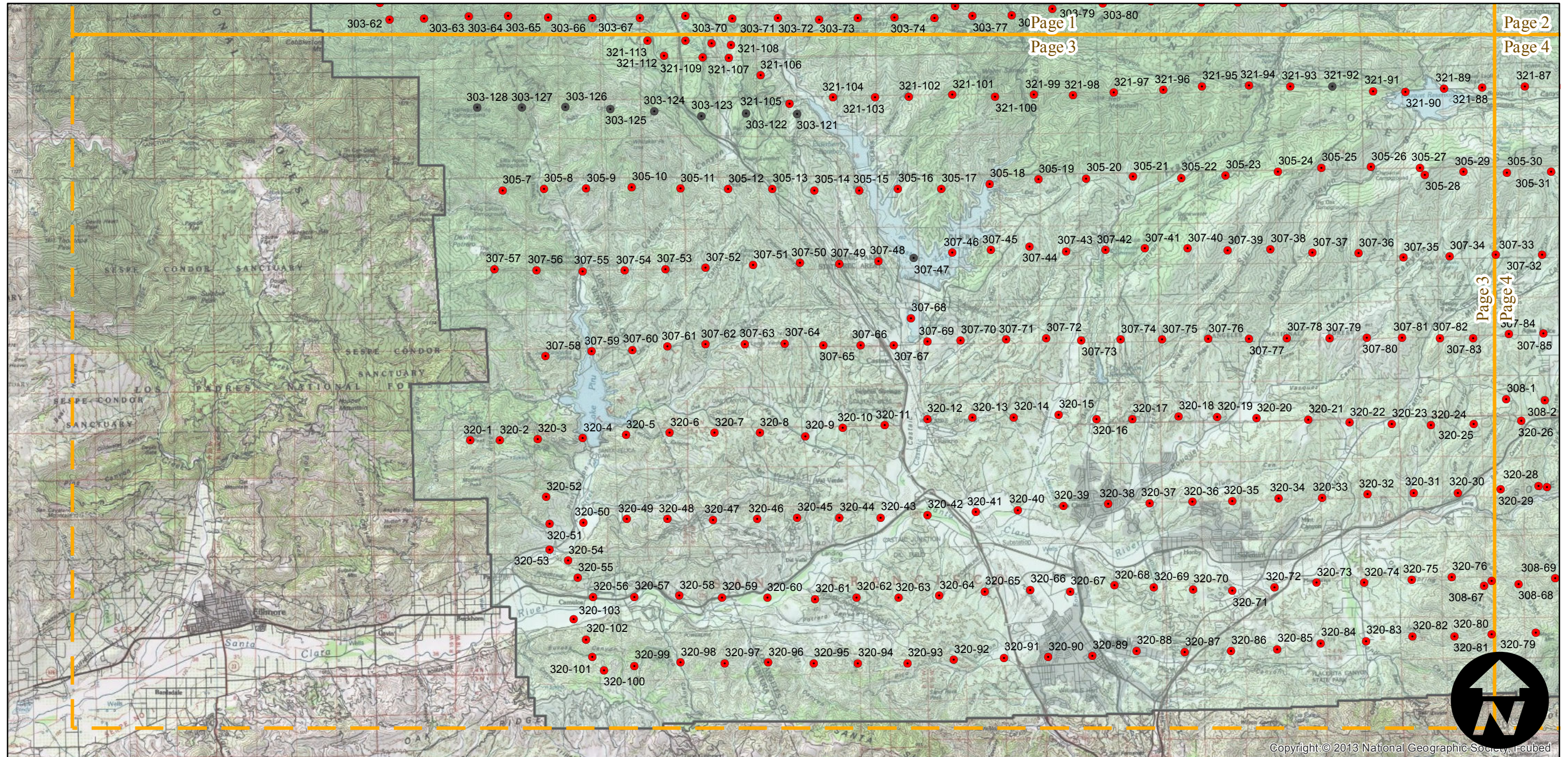
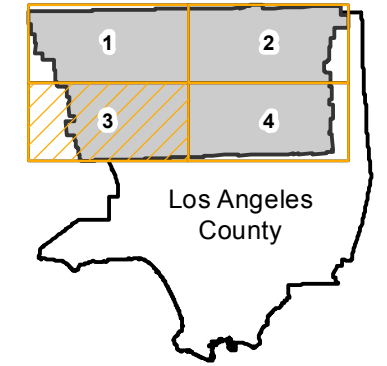
Counties: Los Angeles  
Flight date(s): 04-30-1940 to 05-16-1940  
Scale: 1:20,000  
Overlap: 60%

Complete Metadata:  
<http://www.library.ucsb.edu/mil/aerial-photography-tools>

Imagery from Fairchild Aerial Surveys flight C-6500 incorporated into this flight. Overlap within flightlines is not consistent. Oversize (16" x 16") 4-part enlarged prints filed at Annex 3. Prints and nitrate negatives acquired from Whittier College, January 2013.

- MIL owns frame
- MIL does not own frame

## FLIGHT LOCATION



# AXJ-1940

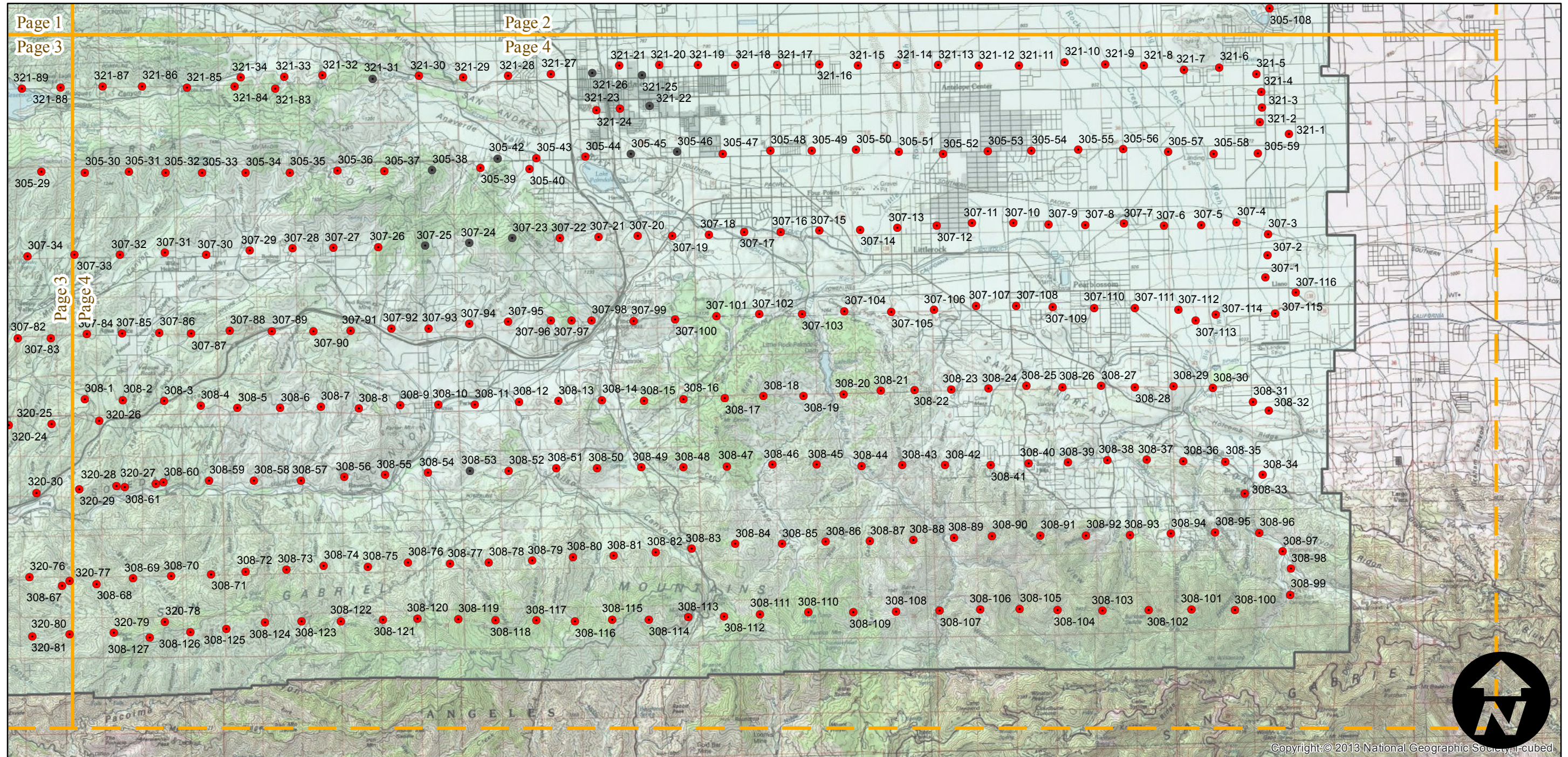
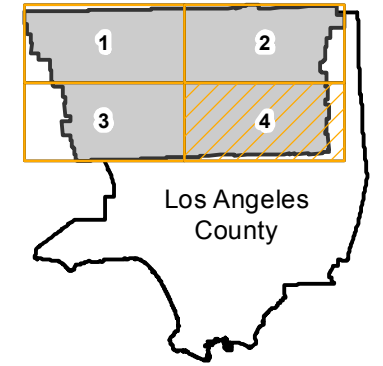
Counties: Los Angeles  
Flight date(s): 04-30-1940 to 05-16-1940  
Scale: 1:20,000  
Overlap: 60%

Complete Metadata:  
<http://www.library.ucsb.edu/mil/aerial-photography-tools>

Imagery from Fairchild Aerial Surveys flight C-6500 incorporated into this flight. Overlap within flightlines is not consistent. Oversize (16" x 16") 4-part enlarged prints filed at Annex 3. Prints and nitrate negatives acquired from Whittier College, January 2013.

- MIL owns frame
- MIL does not own frame

## FLIGHT LOCATION



0 3 6 12 Miles

Index to Aerial Photography  
Page 4 of 4

Scale of this index: 1:165,000

Copyright © 2013 National Geographic Society, i-cubed