

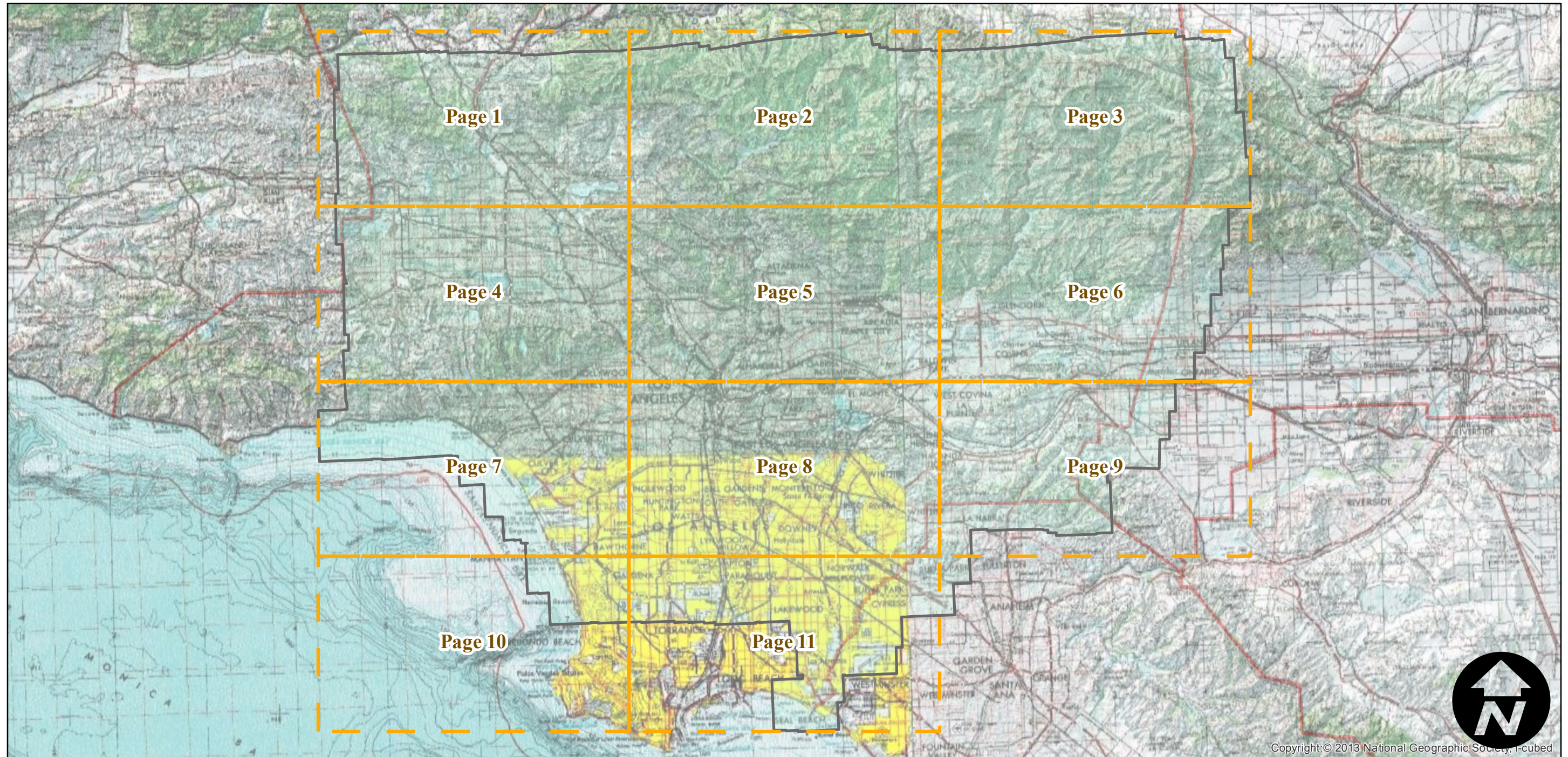
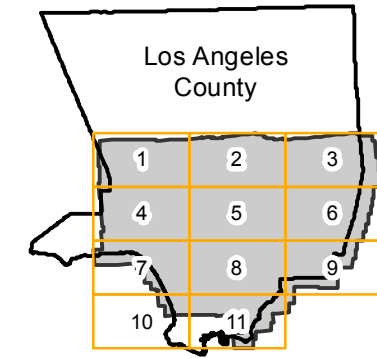
AXJ-1938

Counties: Los Angeles
Flight date(s): 01-01-1938 to 12-31-1938
Scale: 1:20,000
Overlap: 60%

Note: Diapositives purchased from King Visual Technology; paper prints acquired from Whittier College, January 2013. Some analog frames in this flight are filed under AXK-1938 or AXL-1938.

Complete Metadata:
<http://www.library.ucsb.edu/mil/aerial-photography-tools>

FLIGHT LOCATION



0 5 10 20 Miles

Index to Aerial Photography
Page Key

Scale of this index: 1:450,000

Copyright © 2013 National Geographic Society, i-cubed

AXJ-1938

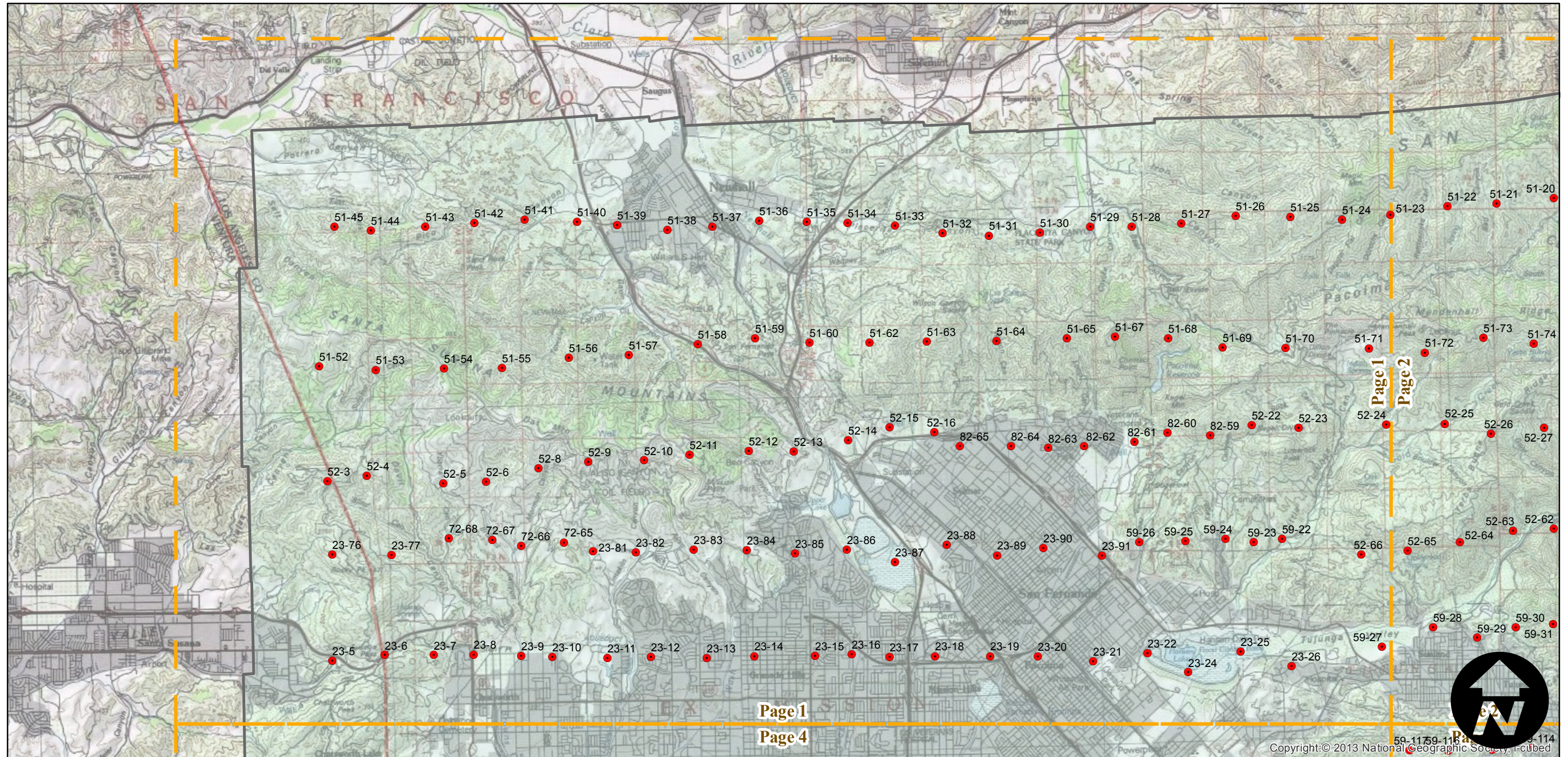
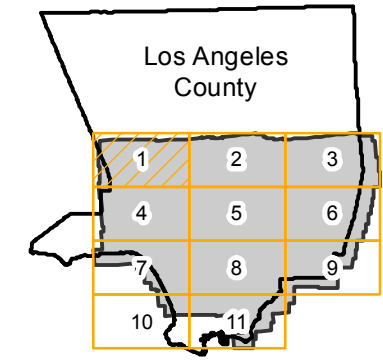
Counties: Los Angeles
 Flight date(s): 01-01-1938 to 12-31-1938
 Scale: 1:20,000
 Overlap: 60%

Complete Metadata:
<http://www.library.ucsb.edu/mil/aerial-photography-tools>

Note: Diapositives purchased from King Visual Technology; paper prints acquired from Whittier College, January 2013. Some analog frames in this flight are filed under AXK-1938 or AXL-1938.

- MIL owns frame
- MIL does not own frame

FLIGHT LOCATION



0 2 4 8 Miles

AXJ-1938

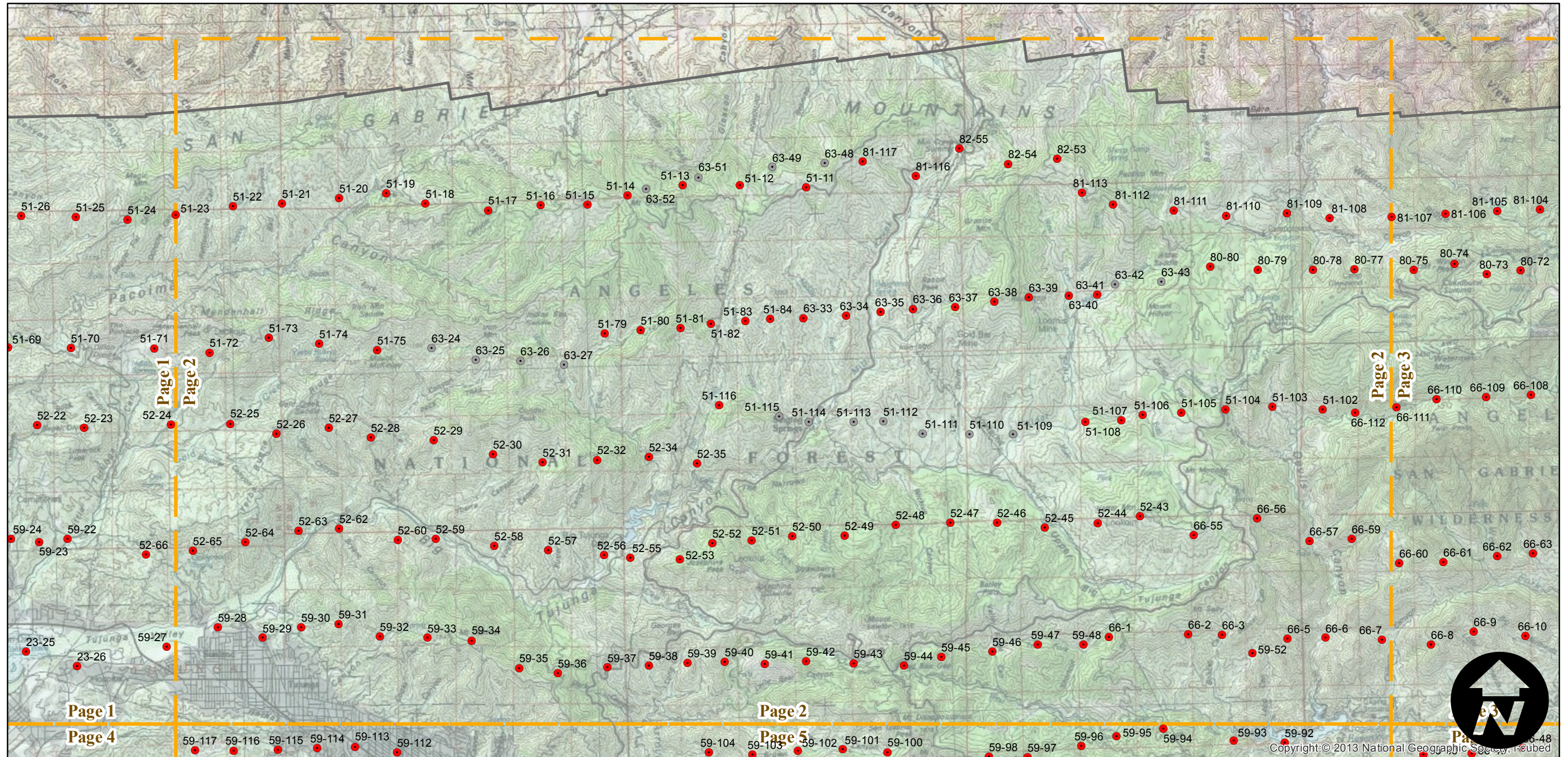
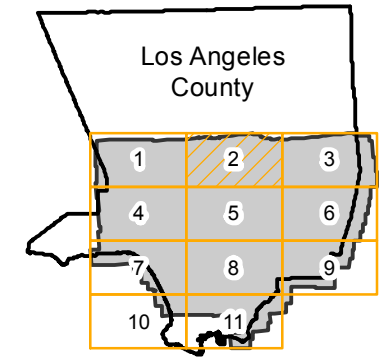
Counties: Los Angeles
Flight date(s): 01-01-1938 to 12-31-1938
Scale: 1:20,000
Overlap: 60%

Complete Metadata:
<http://www.library.ucsb.edu/mil/aerial-photography-tools>

Note: Diapositives purchased from King Visual Technology; paper prints acquired from Whittier College, January 2013. Some analog frames in this flight are filed under AXK-1938 or AXL-1938.

- MIL owns frame
- MIL does not own frame

FLIGHT LOCATION



0 2 4 8 Miles

Index to Aerial Photography
Page 2 of 11

Scale of this index: 1:115,000

Copyright © 2013 National Geographic Society. All rights reserved.

AXJ-1938

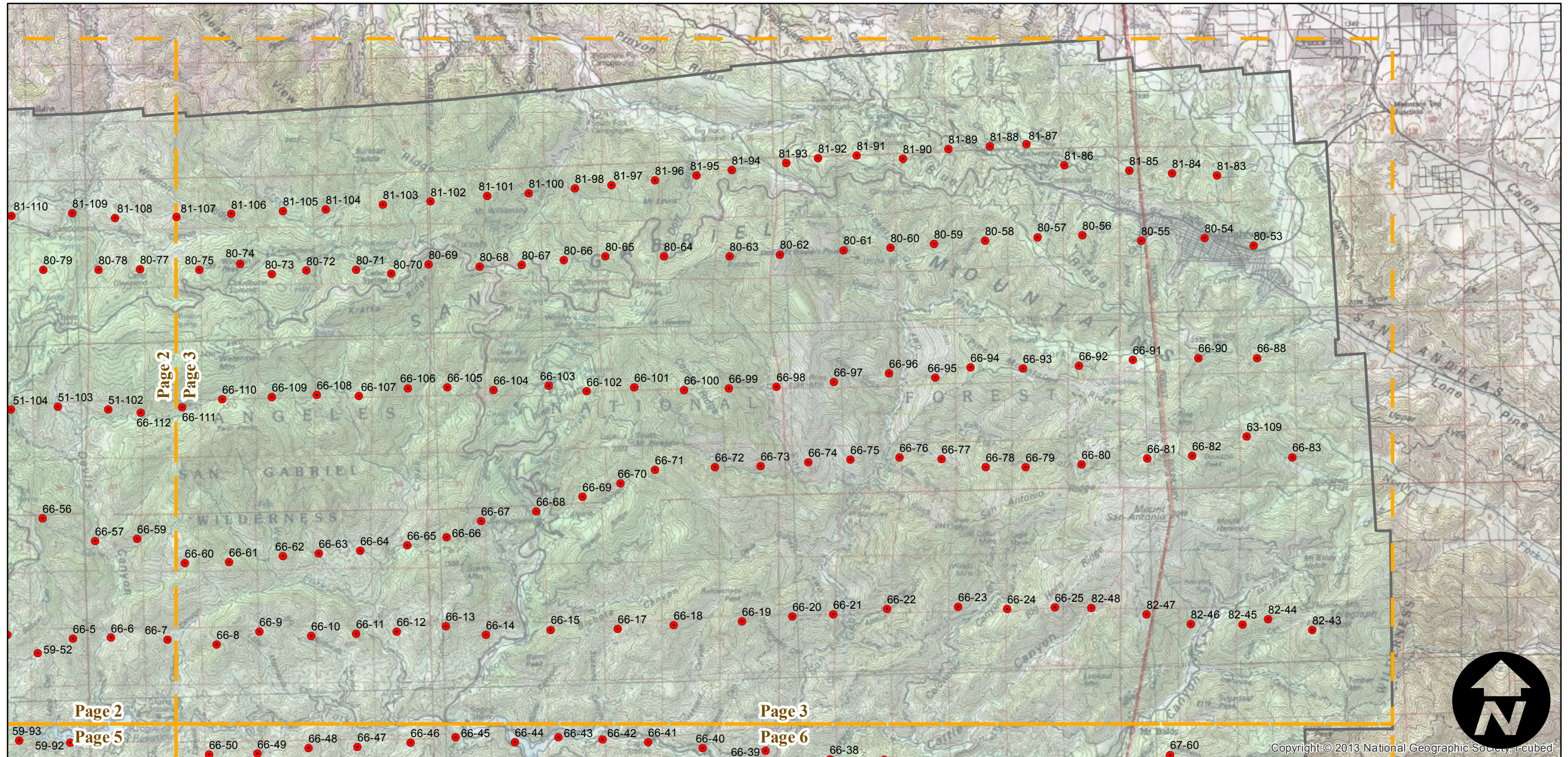
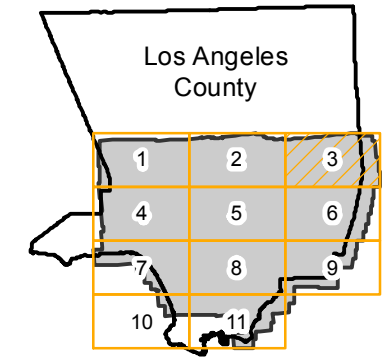
Counties: Los Angeles
Flight date(s): 01-01-1938 to 12-31-1938
Scale: 1:20,000
Overlap: 60%

Complete Metadata:
<http://www.library.ucsb.edu/mil/aerial-photography-tools>

Note: Diapositives purchased from King Visual Technology; paper prints acquired from Whittier College, January 2013. Some analog frames in this flight are filed under AXK-1938 or AXL-1938.

- MIL owns frame
- MIL does not own frame

FLIGHT LOCATION



0 2 4 8 Miles

Index to Aerial Photography
Page 3 of 11

Scale of this index: 1:115,000

AXJ-1938

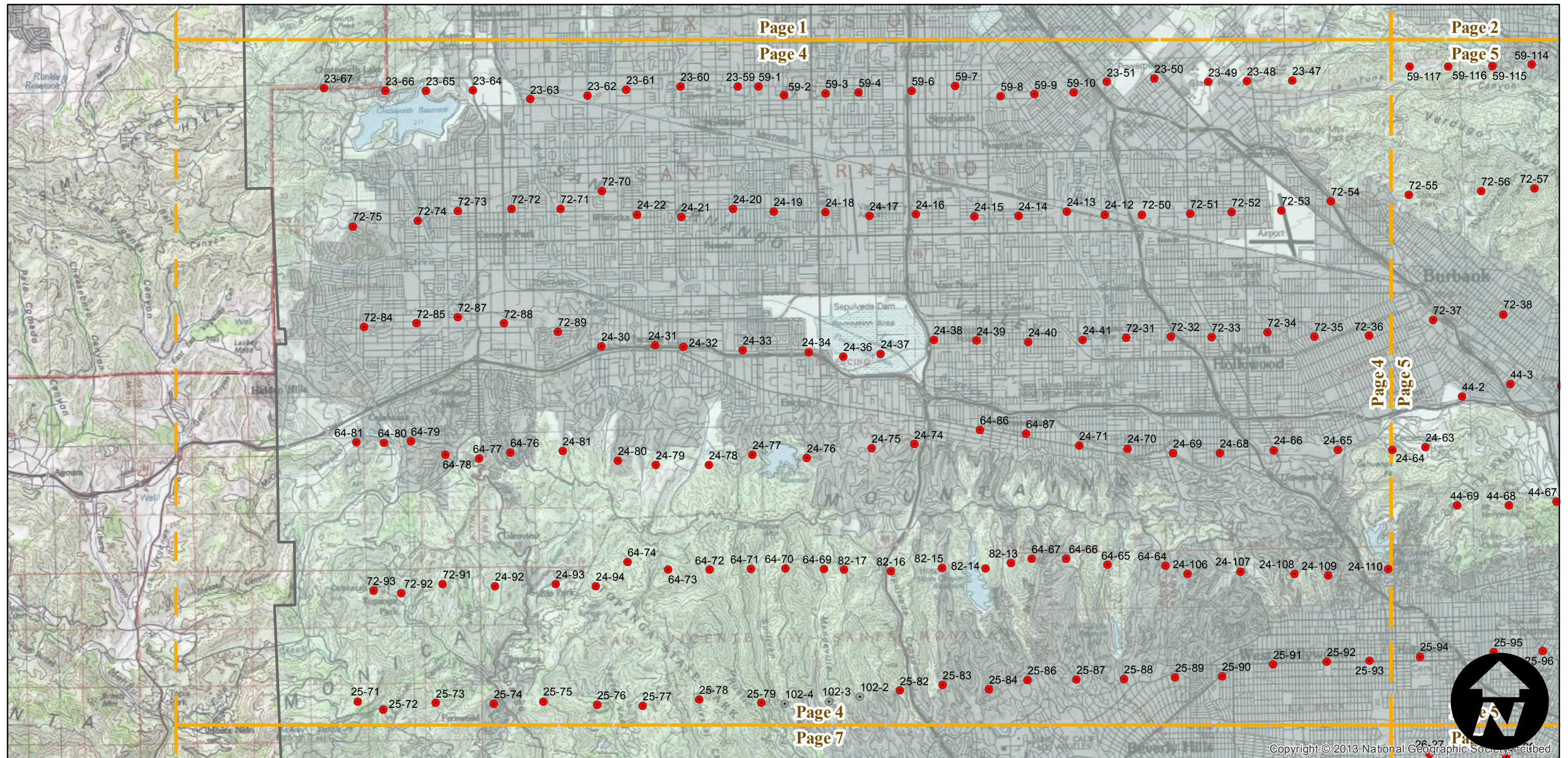
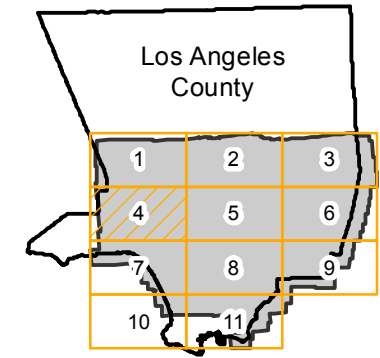
Counties: Los Angeles
 Flight date(s): 01-01-1938 to 12-31-1938
 Scale: 1:20,000
 Overlap: 60%

Complete Metadata:
<http://www.library.ucsb.edu/mil/aerial-photography-tools>

Note: Diapositives purchased from King Visual Technology; paper prints acquired from Whittier College, January 2013. Some analog frames in this flight are filed under AXK-1938 or AXL-1938.

- MIL owns frame
- MIL does not own frame

FLIGHT LOCATION



0 2 4 8 Miles

AXJ-1938

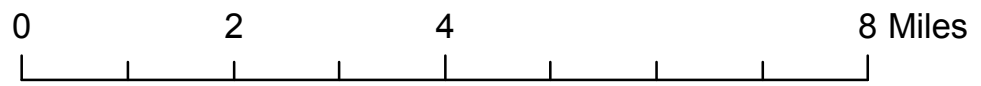
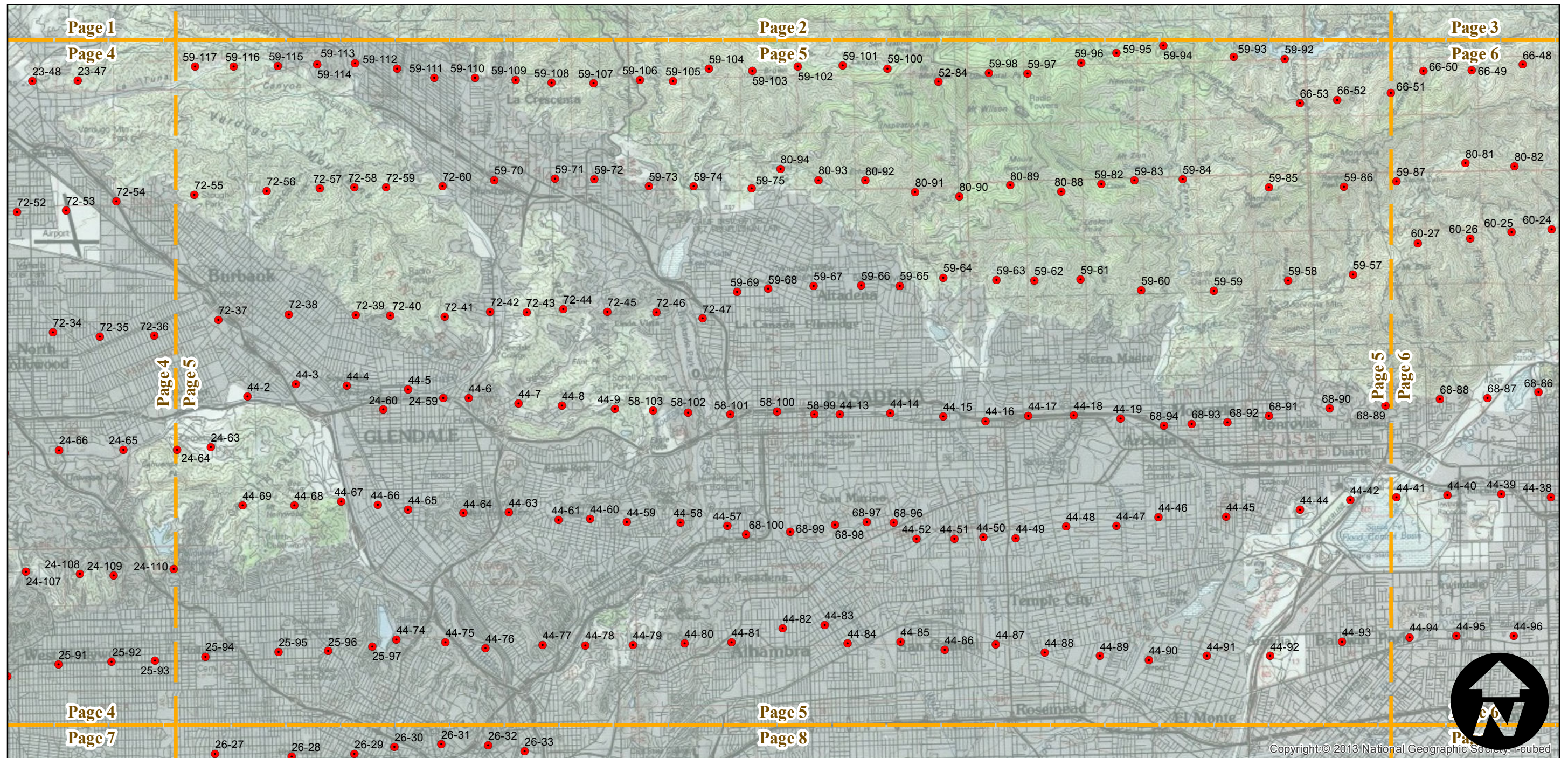
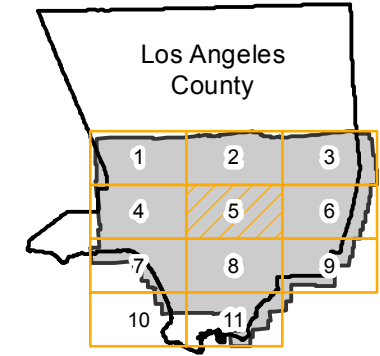
Counties: Los Angeles
 Flight date(s): 01-01-1938 to 12-31-1938
 Scale: 1:20,000
 Overlap: 60%

Complete Metadata:
<http://www.library.ucsb.edu/mil/aerial-photography-tools>

Note: Diapositives purchased from King Visual Technology; paper prints acquired from Whittier College, January 2013. Some analog frames in this flight are filed under AXK-1938 or AXL-1938.

- MIL owns frame
- MIL does not own frame

FLIGHT LOCATION



AXJ-1938

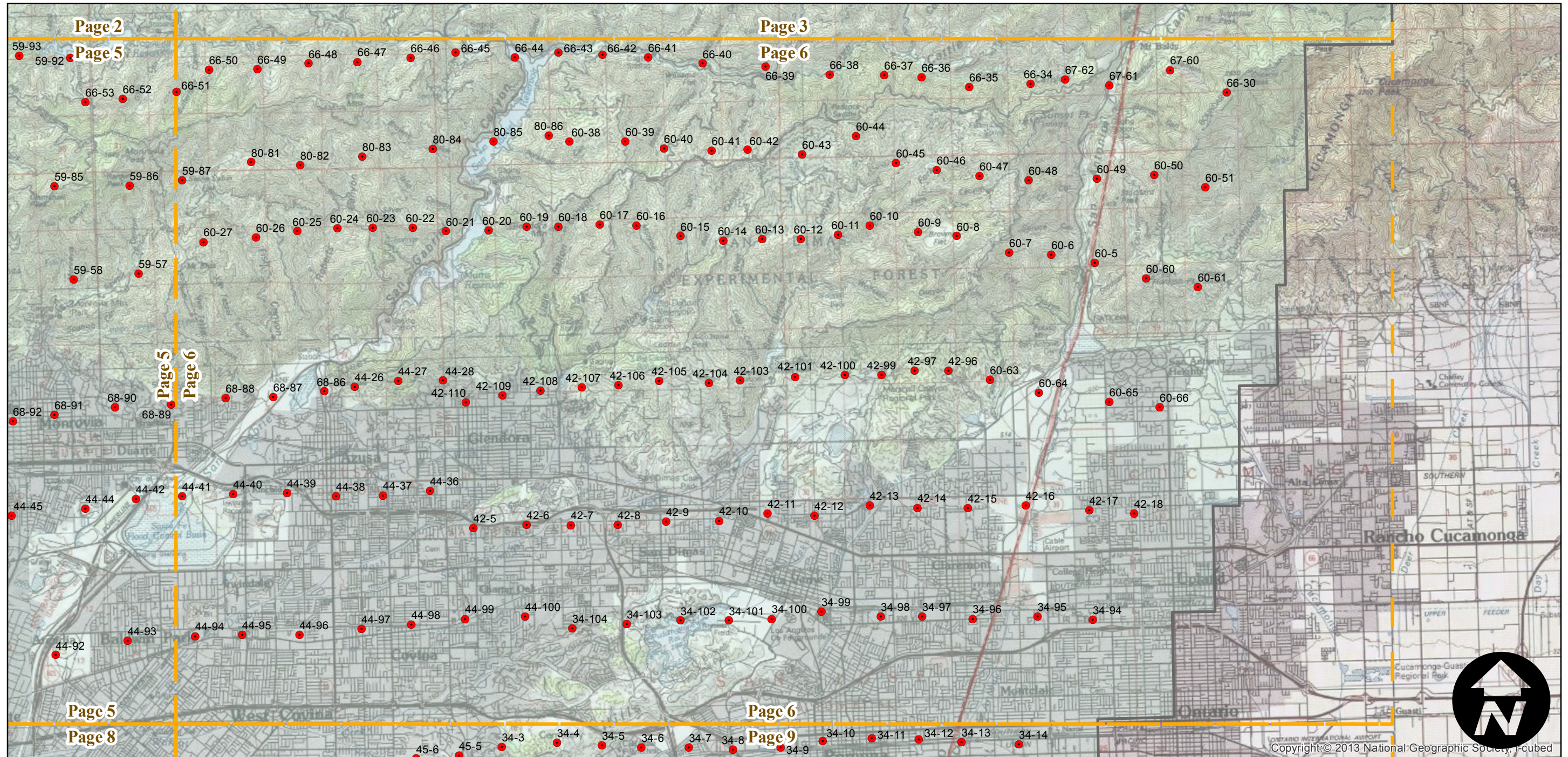
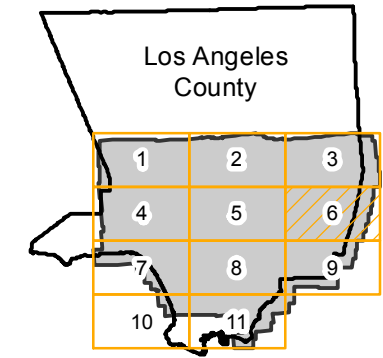
Counties: Los Angeles
 Flight date(s): 01-01-1938 to 12-31-1938
 Scale: 1:20,000
 Overlap: 60%

Complete Metadata:
<http://www.library.ucsb.edu/mil/aerial-photography-tools>

Note: Diapositives purchased from King Visual Technology; paper prints acquired from Whittier College, January 2013. Some analog frames in this flight are filed under AXK-1938 or AXL-1938.

- MIL owns frame
- MIL does not own frame

FLIGHT LOCATION



AXJ-1938

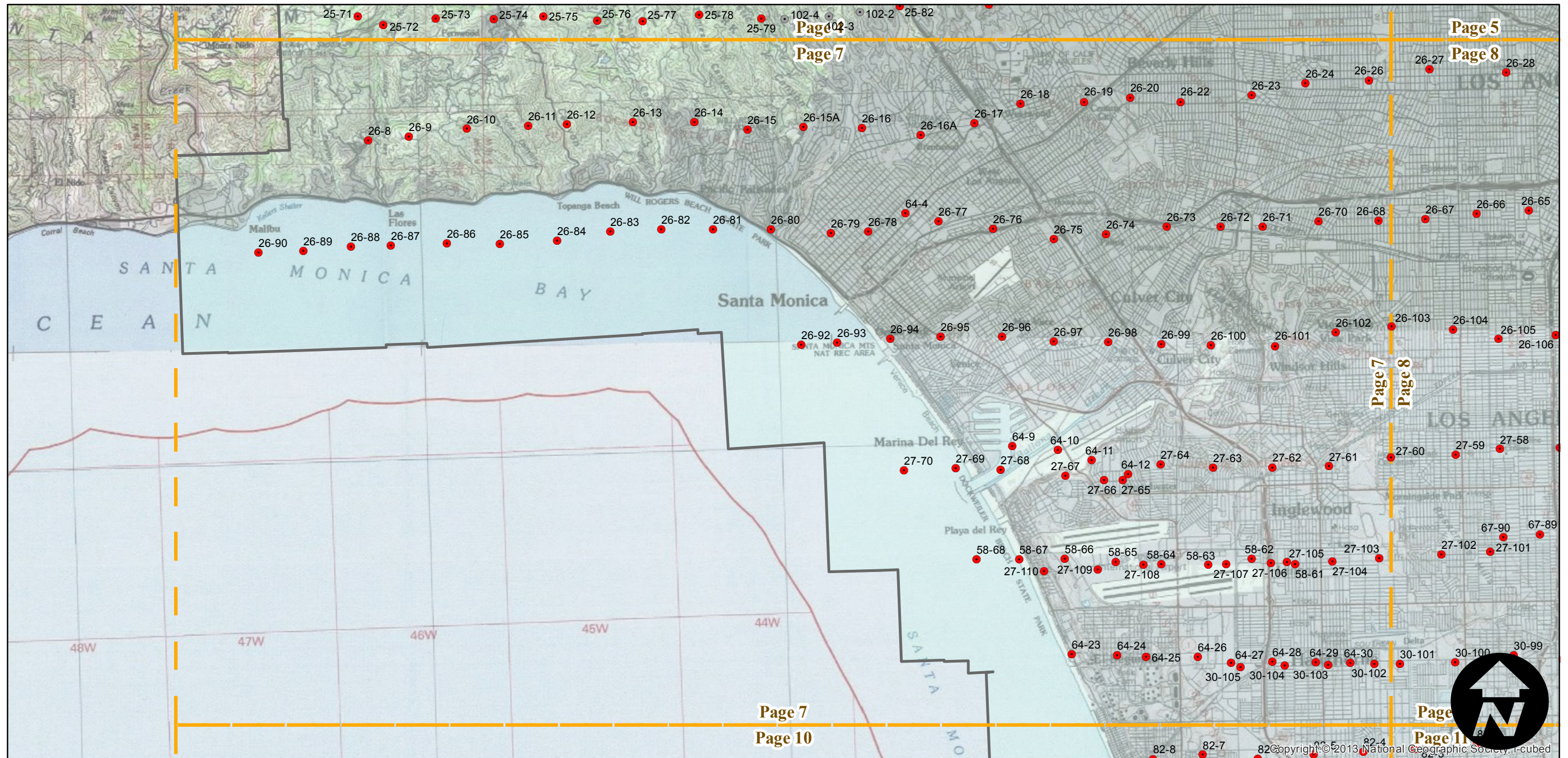
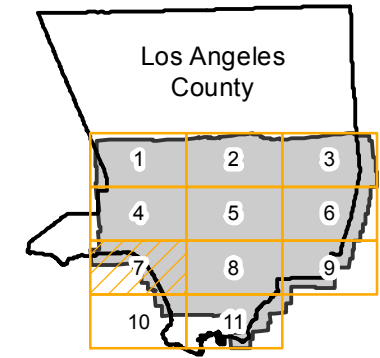
Counties: Los Angeles
 Flight date(s): 01-01-1938 to 12-31-1938
 Scale: 1:20,000
 Overlap: 60%

Complete Metadata:
<http://www.library.ucsb.edu/mil/aerial-photography-tools>

Note: Diapositives purchased from King Visual Technology; paper prints acquired from Whittier College, January 2013. Some analog frames in this flight are filed under AXK-1938 or AXL-1938.

- MIL owns frame
- MIL does not own frame

FLIGHT LOCATION



0 2 4 8 Miles

Index to Aerial Photography
 Page 7 of 11

Scale of this index: 1:115,000

AXJ-1938

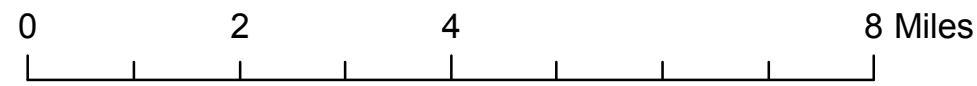
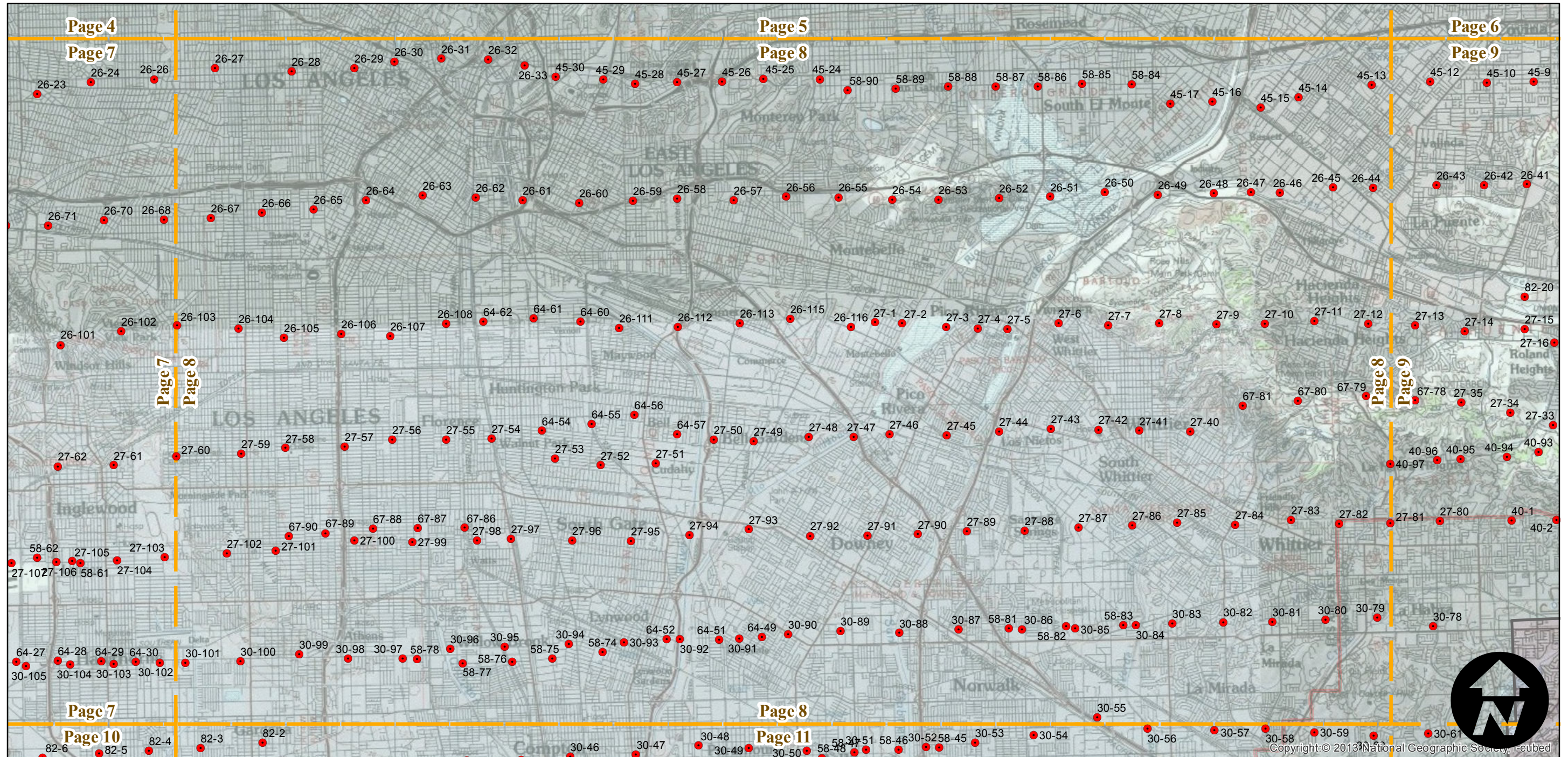
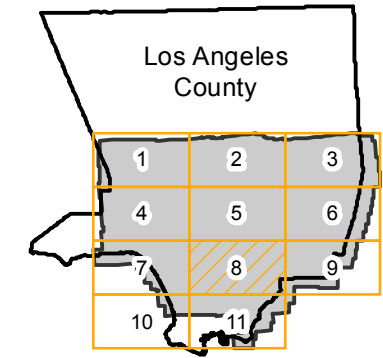
Counties: Los Angeles
 Flight date(s): 01-01-1938 to 12-31-1938
 Scale: 1:20,000
 Overlap: 60%

Complete Metadata:
<http://www.library.ucsb.edu/mil/aerial-photography-tools>

Note: Diapositives purchased from King Visual Technology; paper prints acquired from Whittier College, January 2013. Some analog frames in this flight are filed under AXK-1938 or AXL-1938.

- MIL owns frame
- MIL does not own frame

FLIGHT LOCATION



AXJ-1938

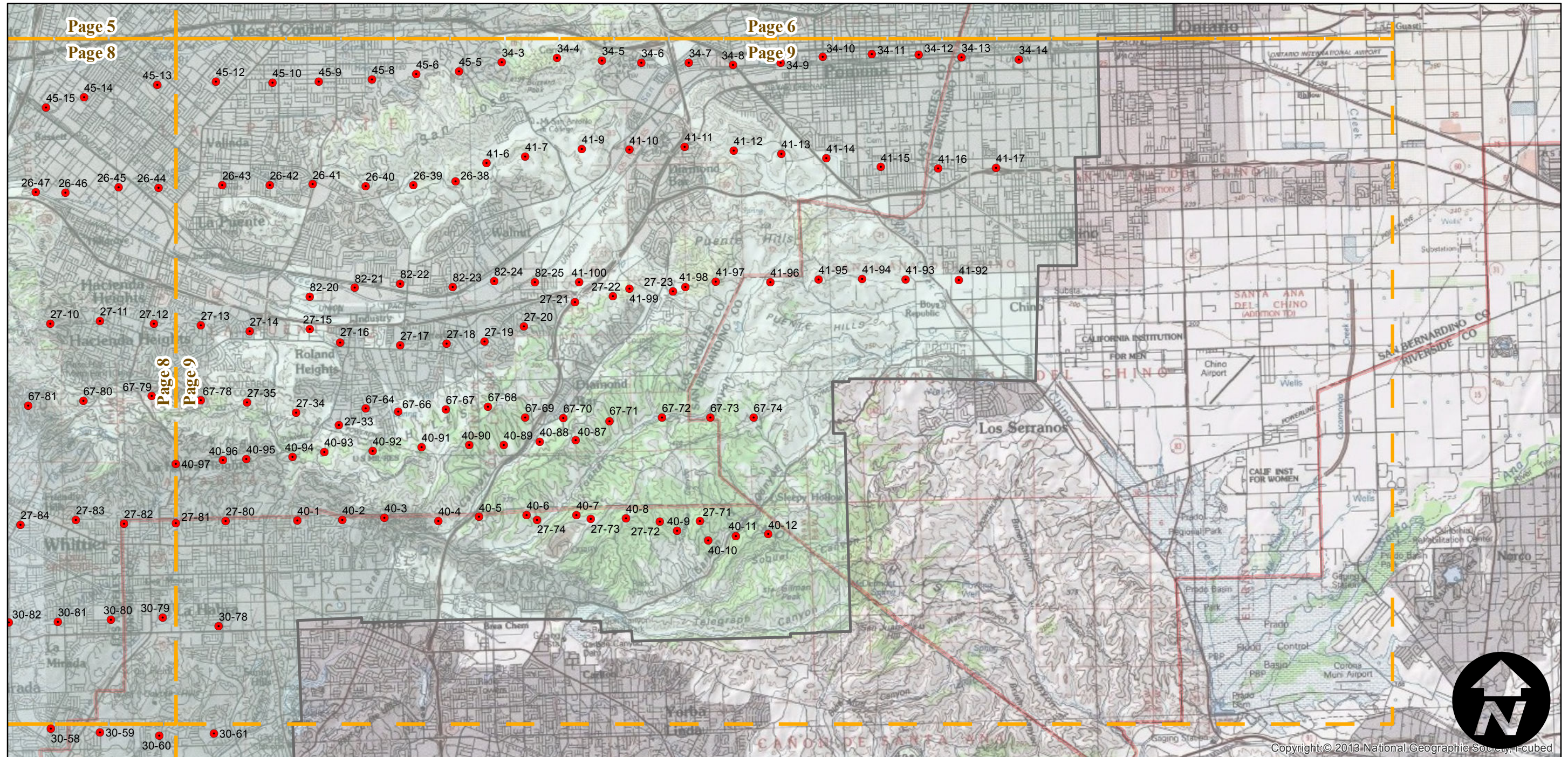
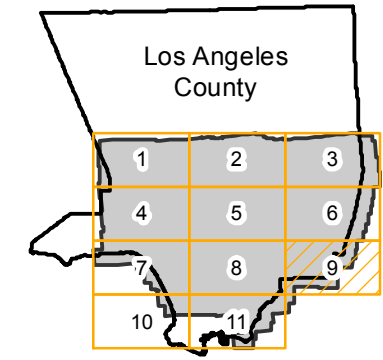
Counties: Los Angeles
 Flight date(s): 01-01-1938 to 12-31-1938
 Scale: 1:20,000
 Overlap: 60%

Complete Metadata:
<http://www.library.ucsb.edu/mil/aerial-photography-tools>

Note: Diapositives purchased from King Visual Technology; paper prints acquired from Whittier College, January 2013. Some analog frames in this flight are filed under AXK-1938 or AXL-1938.

- MIL owns frame
- MIL does not own frame

FLIGHT LOCATION



Copyright © 2013 National Geographic Society, i-cubed

0 2 4 8 Miles

Index to Aerial Photography
 Page 9 of 11

Scale of this index: 1:115,000

AXJ-1938

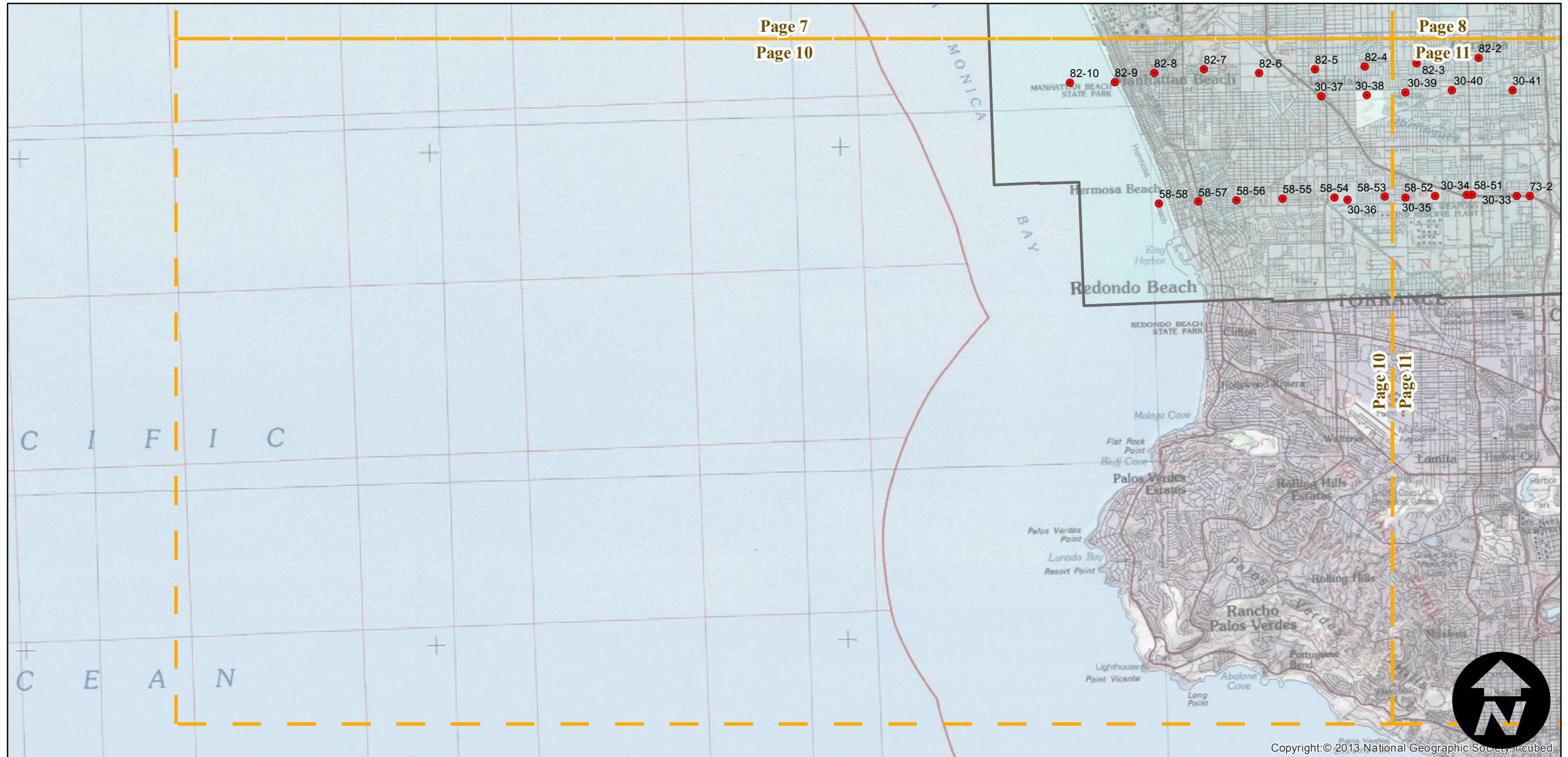
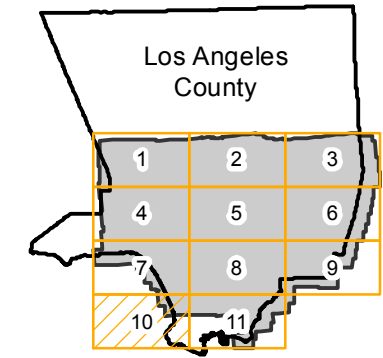
Counties: Los Angeles
Flight date(s): 01-01-1938 to 12-31-1938
Scale: 1:20,000
Overlap: 60%

Complete Metadata:
<http://www.library.ucsb.edu/mil/aerial-photography-tools>

Note: Diapositives purchased from King Visual Technology; paper prints acquired from Whittier College, January 2013. Some analog frames in this flight are filed under AXK-1938 or AXL-1938.

- MIL owns frame
- MIL does not own frame

FLIGHT LOCATION



0 2 4 8 Miles

Index to Aerial Photography
Page 10 of 11

Scale of this index: 1:115,000

Copyright: © 2013 National Geographic Society, i-cubed

AXJ-1938

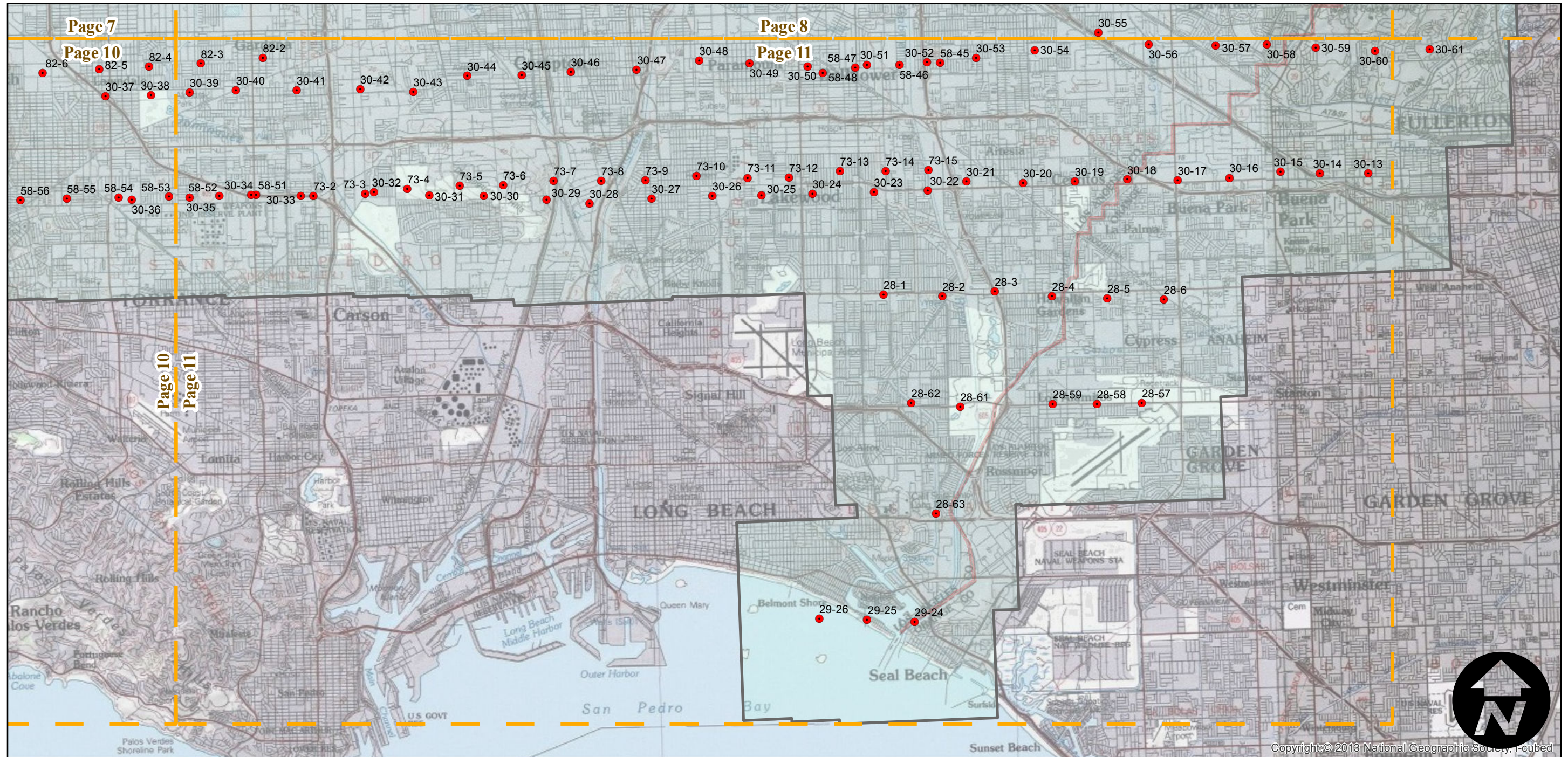
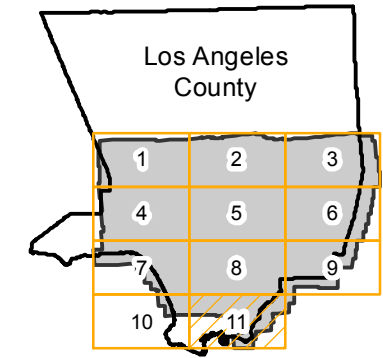
Counties: Los Angeles
Flight date(s): 01-01-1938 to 12-31-1938
Scale: 1:20,000
Overlap: 60%

Complete Metadata:
<http://www.library.ucsb.edu/mil/aerial-photography-tools>

Note: Diapositives purchased from King Visual Technology; paper prints acquired from Whittier College, January 2013. Some analog frames in this flight are filed under AXK-1938 or AXL-1938.

- MIL owns frame
- MIL does not own frame

FLIGHT LOCATION



0 2 4 8 Miles

Index to Aerial Photography
Page 11 of 11

Scale of this index: 1:115,000