

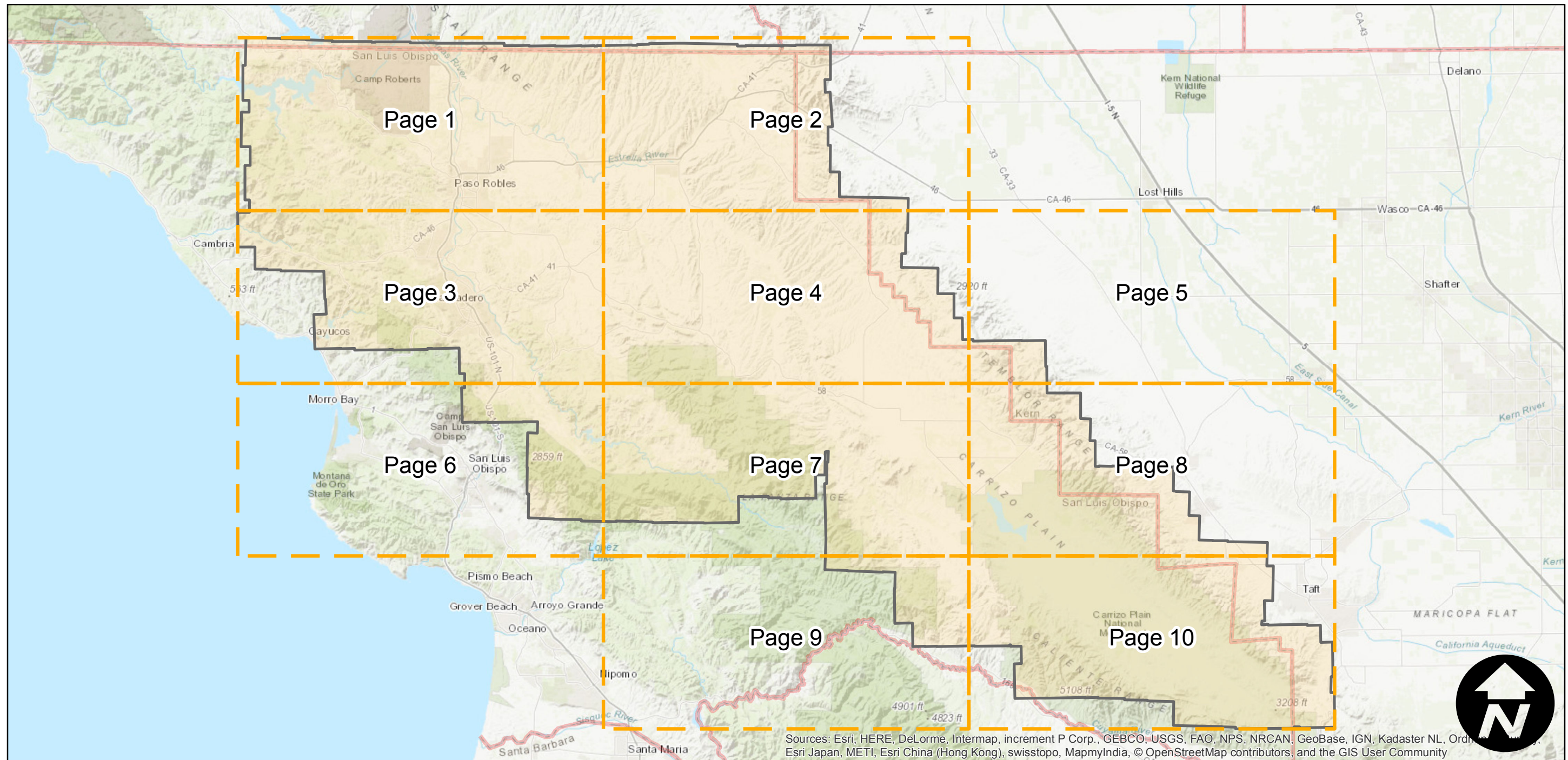
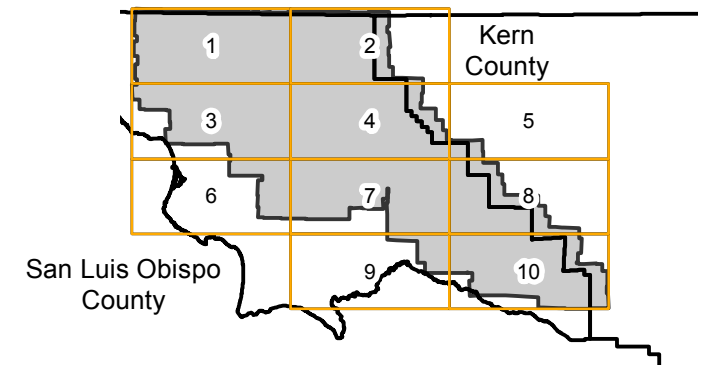
# AXH-1963

Counties: San Luis Obispo, Kern  
Flight date(s): 06-20-1963 to 07-08-1963  
Scale: 1:20,000  
Overlap: 60%

Complete Metadata:  
<http://www.library.ucsb.edu/map-imagery-lab/aerial-photography-information>

Note: Partial coverage of San Luis Obispo County.  
Coverage primarily does not extend to coastal areas.

## FLIGHT LOCATION



Sources: Esri, HERE, DeLorme, Intermap, increment P Corp., GEBCO, USGS, FAO, NPS, NRCAN, GeoBase, IGN, Kadaster NL, Ordnance Survey, Esri Japan, METI, Esri China (Hong Kong), swisstopo, MapmyIndia, © OpenStreetMap contributors, and the GIS User Community

0 5 10 20 Miles

Index to Aerial Photography  
Page Key

Scale of this index: 1:540,000

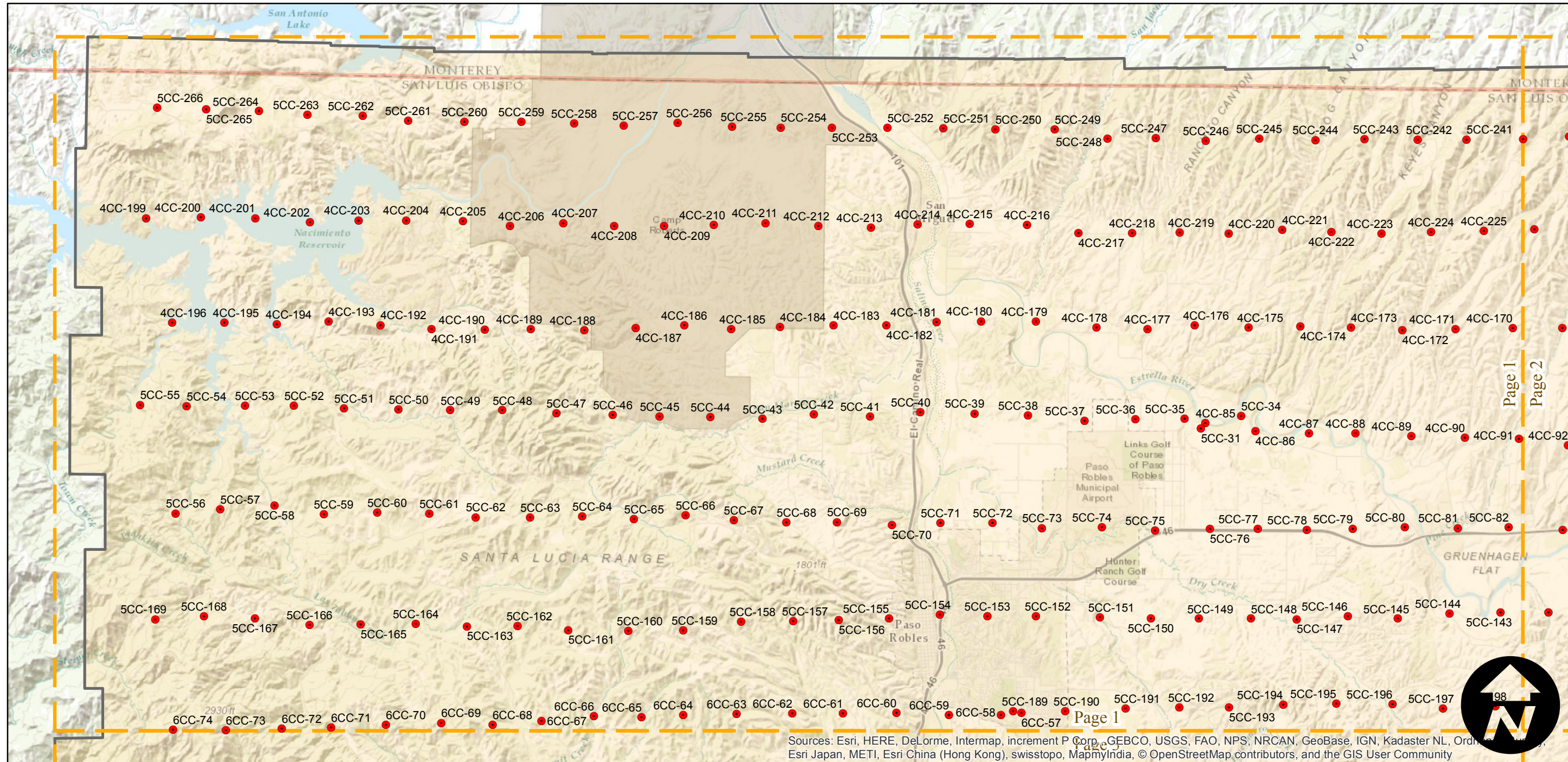
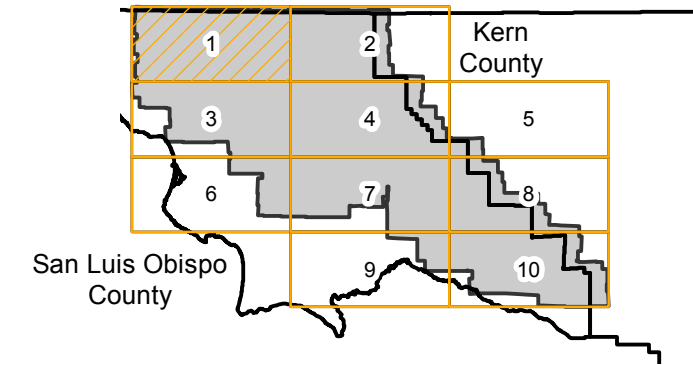
# AXH-1963

Counties: San Luis Obispo, Kern  
Flight date(s): 06-20-1963 to 07-08-1963  
Scale: 1:20,000  
Overlap: 60%

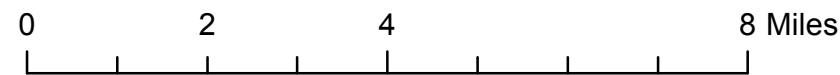
Note: Partial coverage of San Luis Obispo County.  
Coverage primarily does not extend to coastal areas.

Complete Metadata:  
<http://www.library.ucsb.edu/map-imagery-lab/aerial-photography-information>

## FLIGHT LOCATION



Sources: Esri, HERE, DeLorme, Intermap, increment P Corp., GEBCO, USGS, FAO, NPS, NRCAN, GeoBase, IGN, Kadaster NL, Ordnance Survey, Esri Japan, METI, Esri China (Hong Kong), swisstopo, MapmyIndia, © OpenStreetMap contributors, and the GIS User Community



Index to Aerial Photography  
Page 1 of 10

Scale of this index: 1:135,000

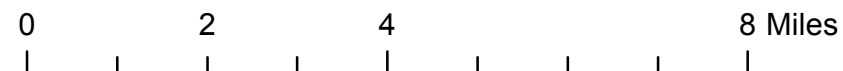
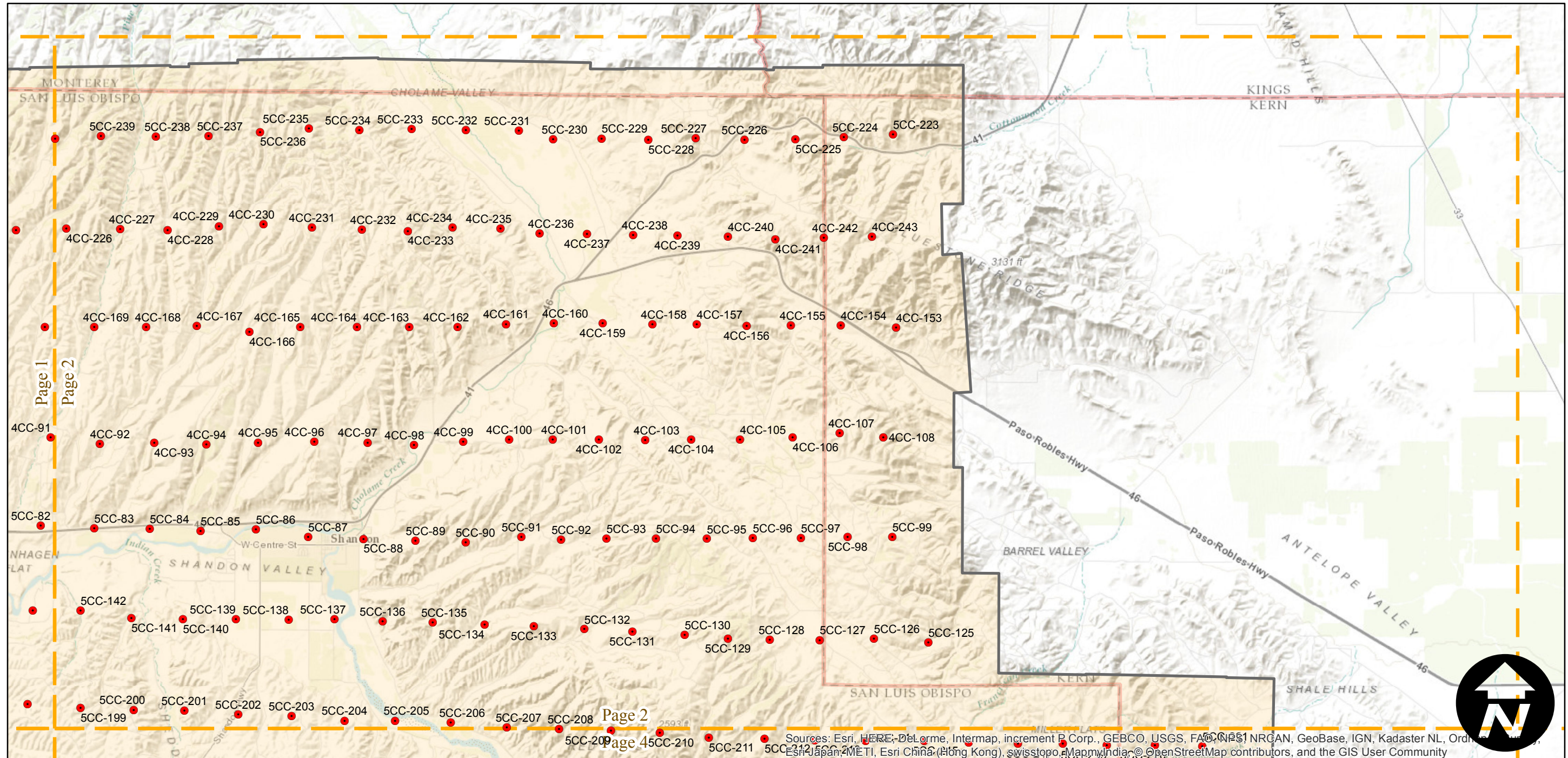
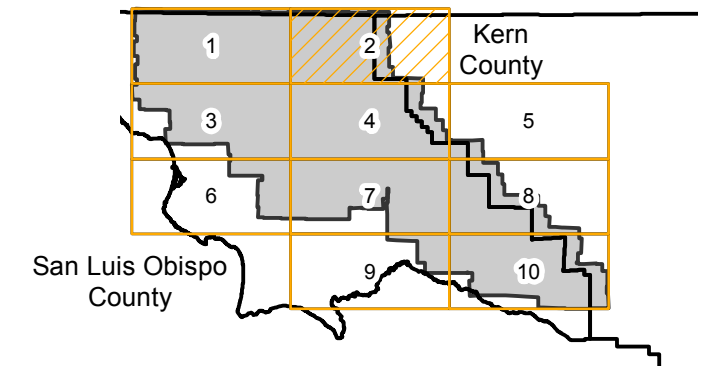
# AXH-1963

Counties: San Luis Obispo, Kern  
Flight date(s): 06-20-1963 to 07-08-1963  
Scale: 1:20,000  
Overlap: 60%

Complete Metadata:  
<http://www.library.ucsb.edu/map-imagery-lab/aerial-photography-information>

Note: Partial coverage of San Luis Obispo County.  
Coverage primarily does not extend to coastal areas.

## FLIGHT LOCATION

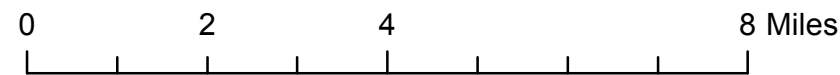
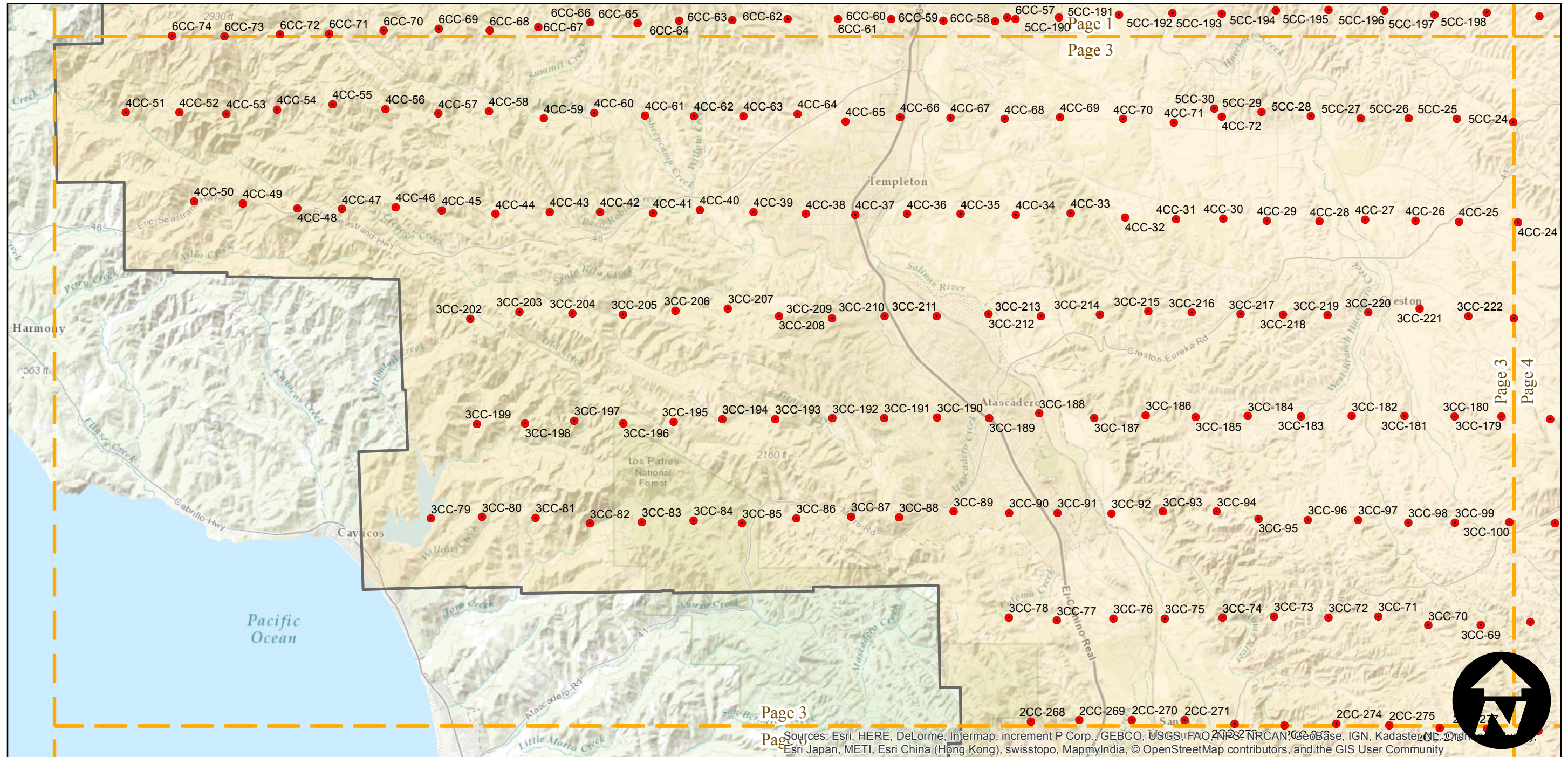
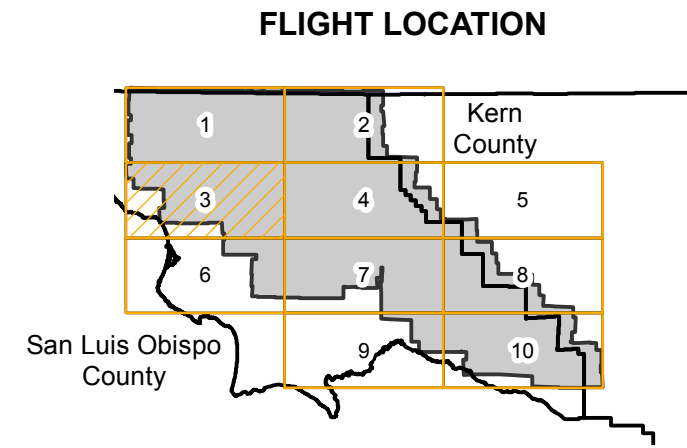


# AXH-1963

Counties: San Luis Obispo, Kern  
 Flight date(s): 06-20-1963 to 07-08-1963  
 Scale: 1:20,000  
 Overlap: 60%

Note: Partial coverage of San Luis Obispo County.  
 Coverage primarily does not extend to coastal areas.

Complete Metadata:  
<http://www.library.ucsb.edu/map-imagery-lab/aerial-photography-information>



Sources: Esri, HERE, DeLorme, Intermap, increment P Corp., GEBCO, USGS, FAO, NPS, NRCAN, GEBCO, IGN, Kadaster NL, Ordnance Survey, Esri Japan, METI, Esri China (Hong Kong), swisstopo, MapmyIndia, © OpenStreetMap contributors, and the GIS User Community

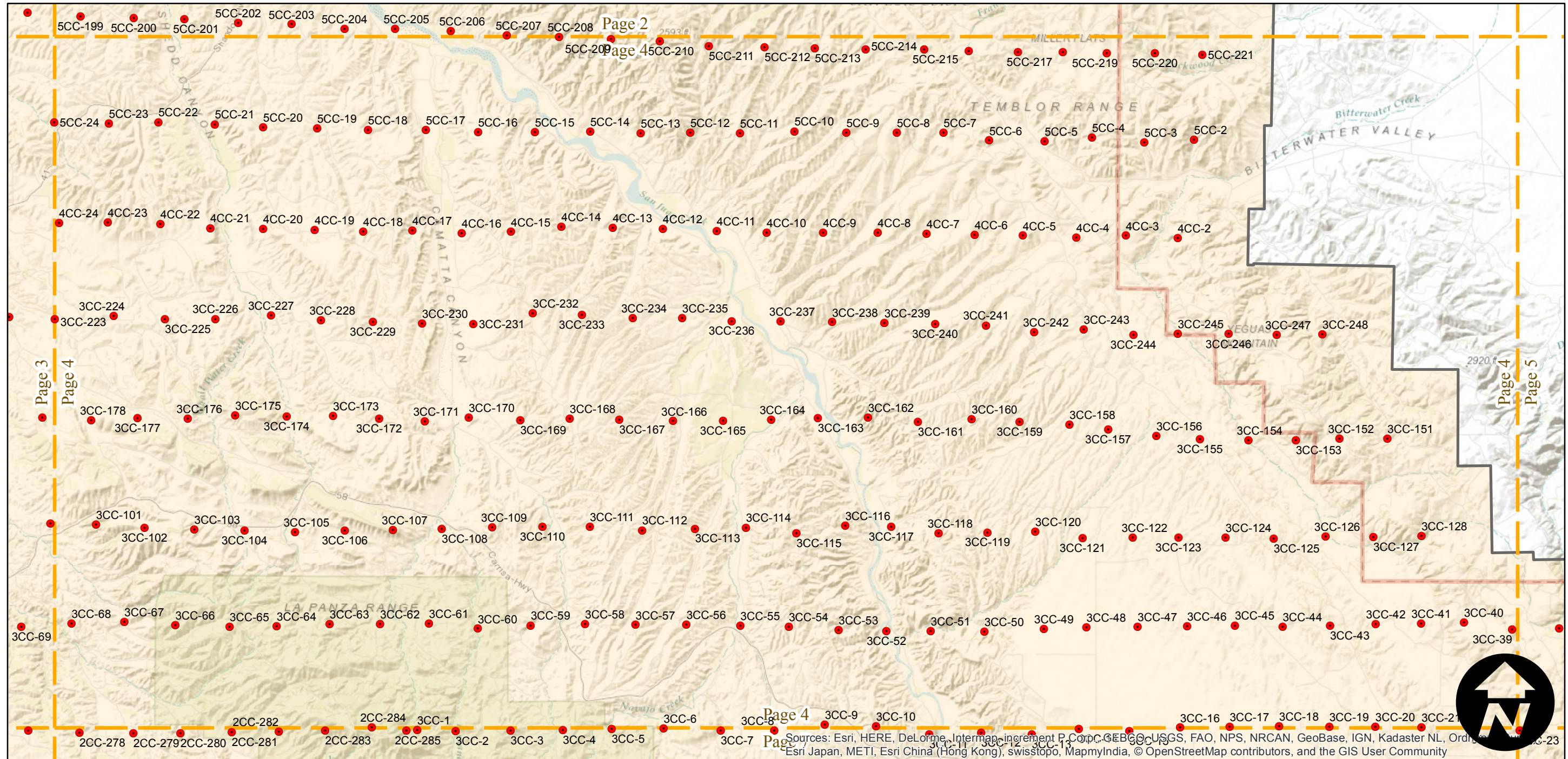
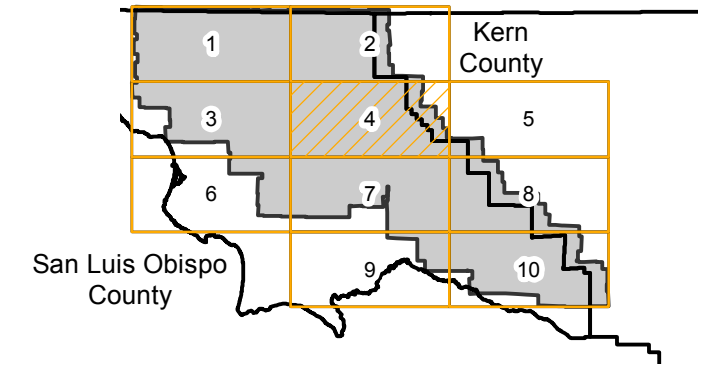
# AXH-1963

Counties: San Luis Obispo, Kern  
Flight date(s): 06-20-1963 to 07-08-1963  
Scale: 1:20,000  
Overlap: 60%

Note: Partial coverage of San Luis Obispo County.  
Coverage primarily does not extend to coastal areas.

Complete Metadata:  
<http://www.library.ucsb.edu/map-imagery-lab/aerial-photography-information>

## FLIGHT LOCATION



0 2 4 8 Miles

Index to Aerial Photography  
Page 4 of 10

Scale of this index: 1:135,000

Sources: Esri, HERE, DeLorme, Intermap, increment P Corp., GEBCO, USGS, FAO, NPS, NRCAN, GeoBase, IGN, Kadaster NL, Ordnance Survey, Esri Japan, METI, Esri China (Hong Kong), swisstopo, MapmyIndia, © OpenStreetMap contributors, and the GIS User Community

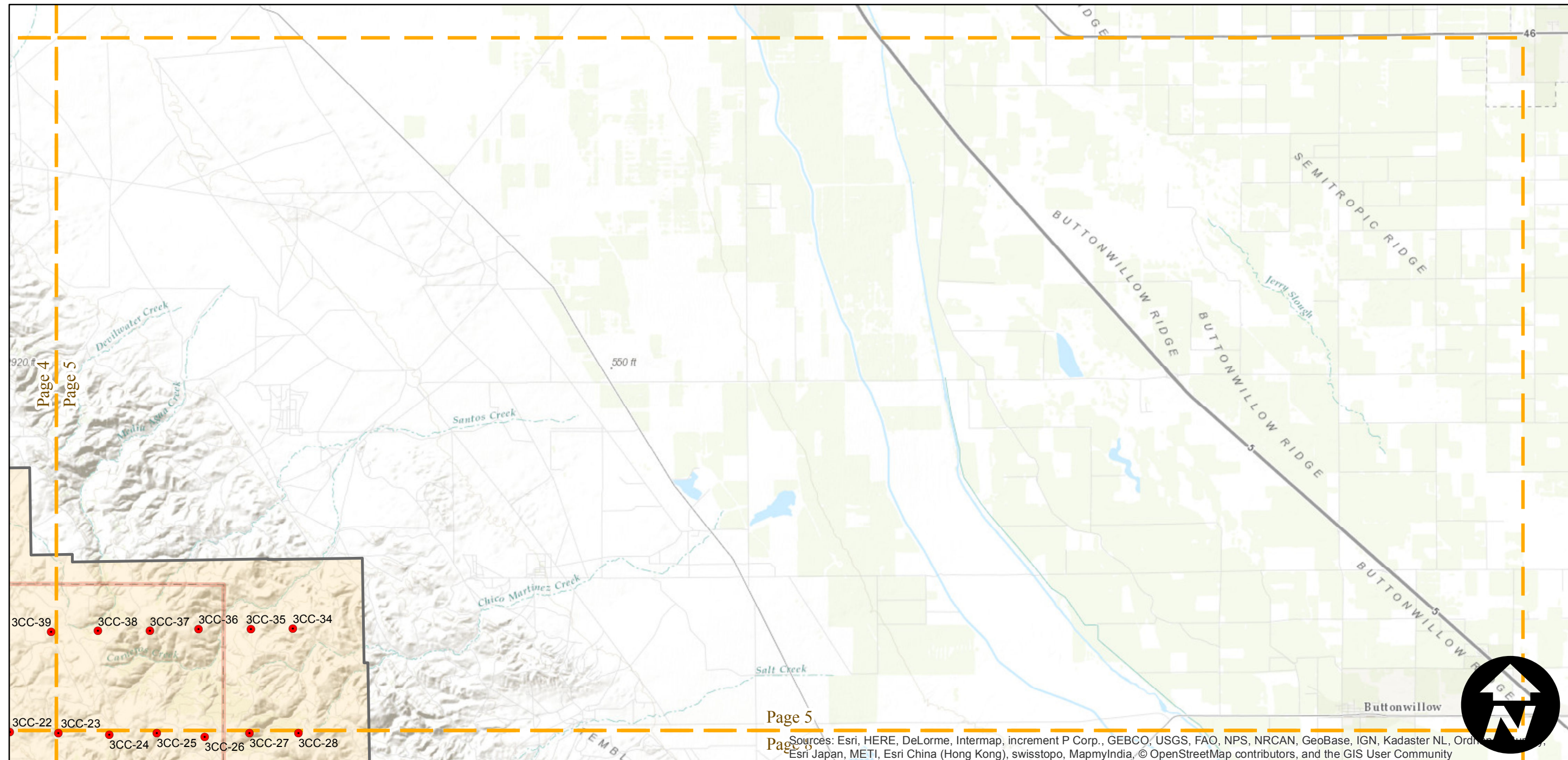
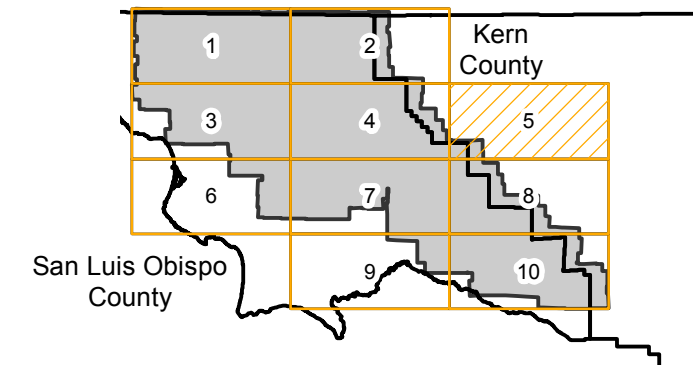
# AXH-1963

Counties: San Luis Obispo, Kern  
Flight date(s): 06-20-1963 to 07-08-1963  
Scale: 1:20,000  
Overlap: 60%

Complete Metadata:  
<http://www.library.ucsb.edu/map-imagery-lab/aerial-photography-information>

Note: Partial coverage of San Luis Obispo County.  
Coverage primarily does not extend to coastal areas.

## FLIGHT LOCATION



0 2 4 8 Miles

Index to Aerial Photography  
Page 5 of 10

Scale of this index: 1:135,000

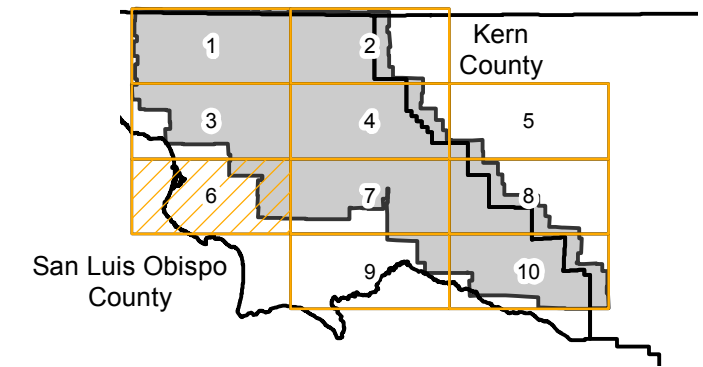
# AXH-1963

Counties: San Luis Obispo, Kern  
Flight date(s): 06-20-1963 to 07-08-1963  
Scale: 1:20,000  
Overlap: 60%

Complete Metadata:  
<http://www.library.ucsb.edu/map-imagery-lab/aerial-photography-information>

Note: Partial coverage of San Luis Obispo County.  
Coverage primarily does not extend to coastal areas.

## FLIGHT LOCATION



Sources: Esri, HERE, DeLorme, Intermap, increment P Corp., GEBCO, USGS, FAO, NPS, NRCAN, GeoBase, IGN, Kadaster NL, Ordnance Survey, Esri Japan, METI, Esri China (Hong Kong), swisstopo, MapmyIndia, © OpenStreetMap contributors, and the GIS User Community

0 2 4 8 Miles

Index to Aerial Photography  
Page 6 of 10

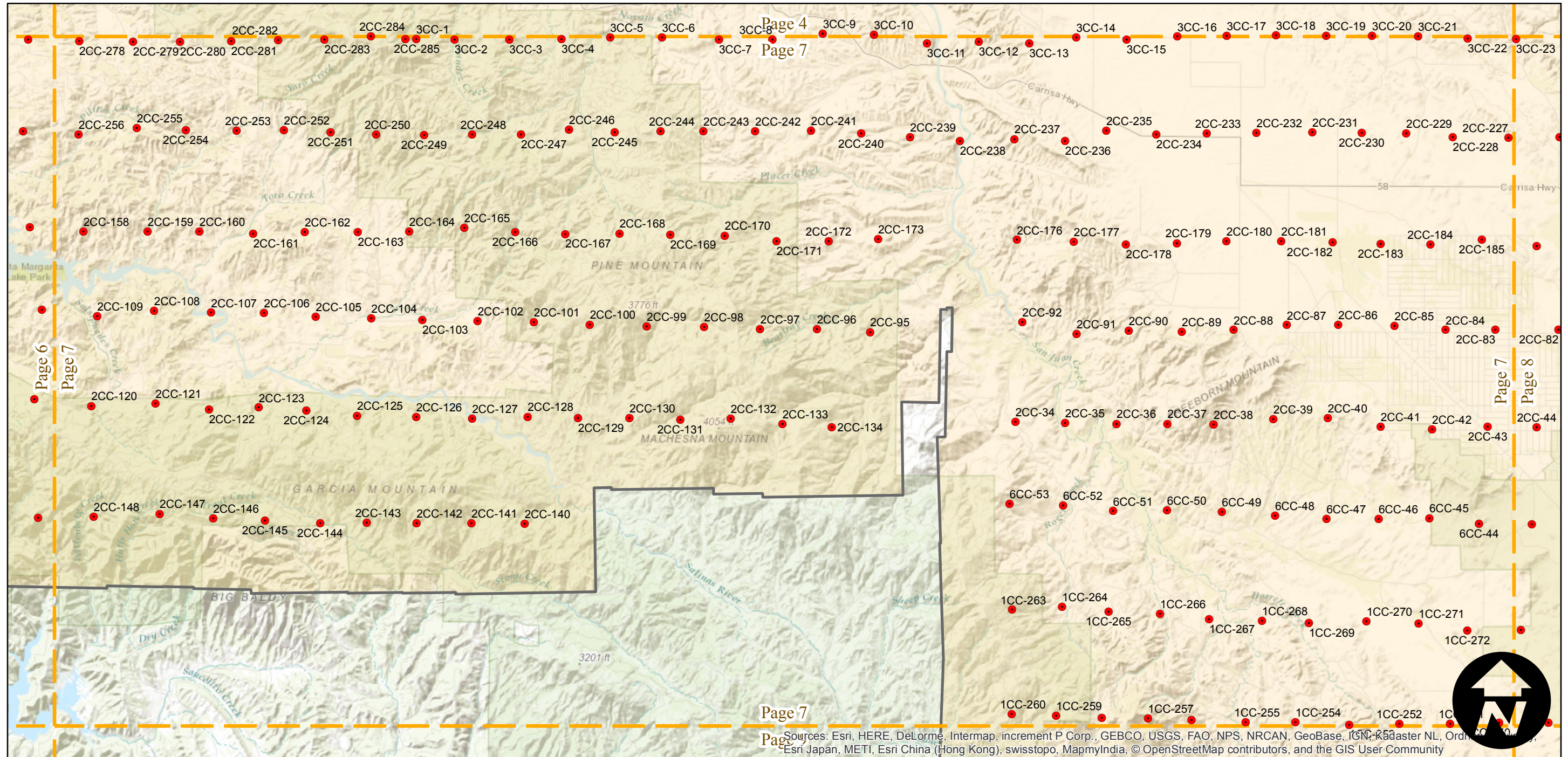
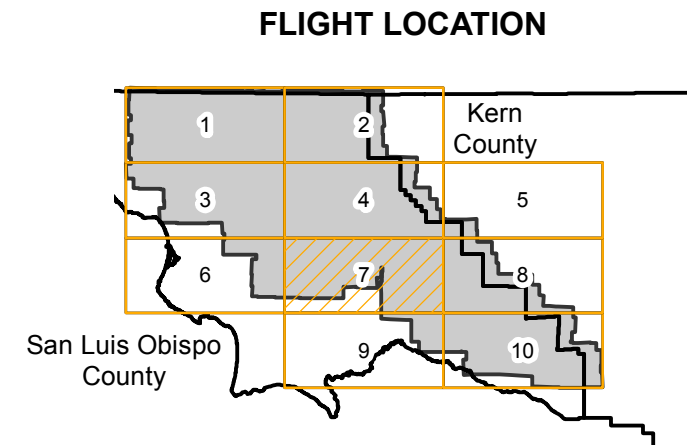
Scale of this index: 1:135,000

# AXH-1963

Counties: San Luis Obispo, Kern  
Flight date(s): 06-20-1963 to 07-08-1963  
Scale: 1:20,000  
Overlap: 60%

Complete Metadata:  
<http://www.library.ucsb.edu/map-imagery-lab/aerial-photography-information>

Note: Partial coverage of San Luis Obispo County.  
Coverage primarily does not extend to coastal areas.



Sources: Esri, HERE, DeLorme, Intermap, increment P Corp., GEBCO, USGS, FAO, NPS, NRCAN, GeoBase, IGN, Kadaster NL, Ordnance Survey, Esri Japan, METI, Esri China (Hong Kong), swisstopo, MapmyIndia, © OpenStreetMap contributors, and the GIS User Community



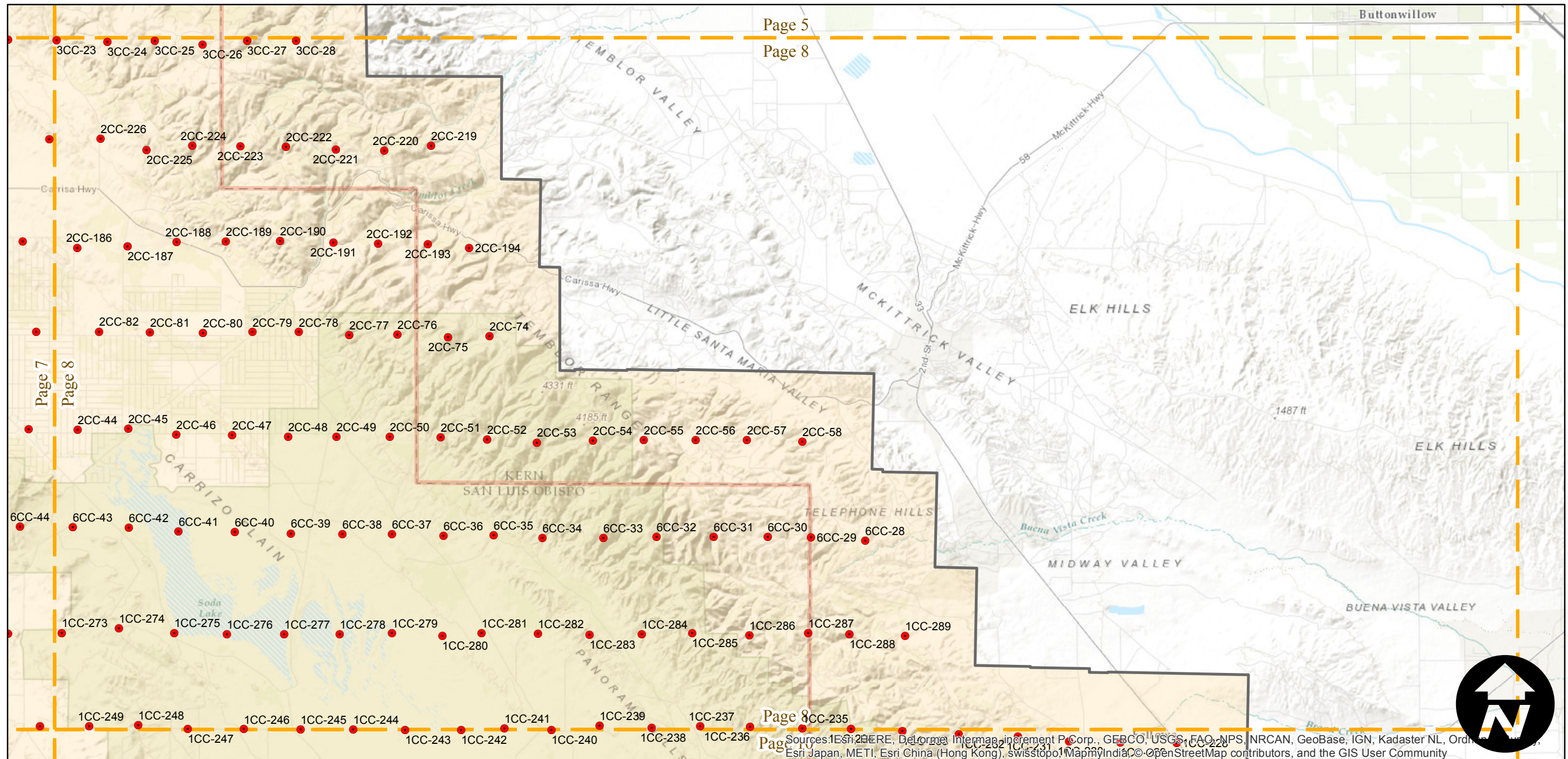
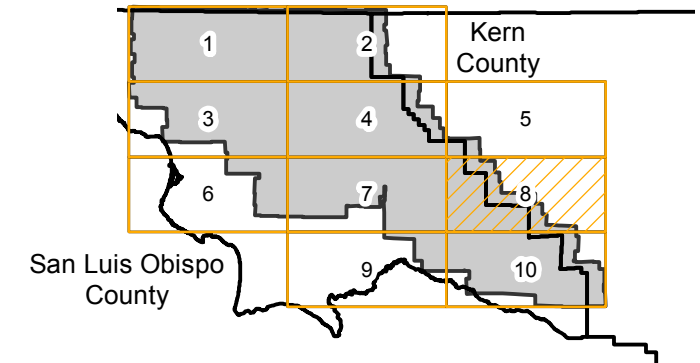
# AXH-1963

Counties: San Luis Obispo, Kern  
Flight date(s): 06-20-1963 to 07-08-1963  
Scale: 1:20,000  
Overlap: 60%

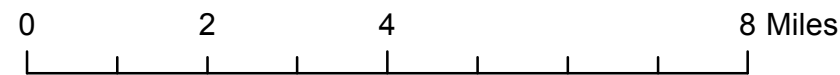
Complete Metadata:  
<http://www.library.ucsb.edu/map-imagery-lab/aerial-photography-information>

Note: Partial coverage of San Luis Obispo County.  
Coverage primarily does not extend to coastal areas.

## FLIGHT LOCATION



Sources: Esri, HERE, DeLorme, Intermap, increment P Corp., GEBCO, USGS, FAO, NPS, NRCAN, GeoBase, IGN, Kadaster NL, Ordnance Survey, Esri Japan, METI, Esri China (Hong Kong), swisstopo, Mapbox India, CC-BY, OpenStreetMap contributors, and the GIS User Community

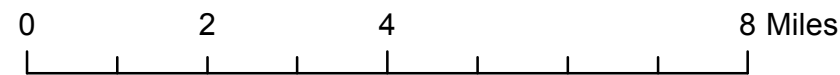
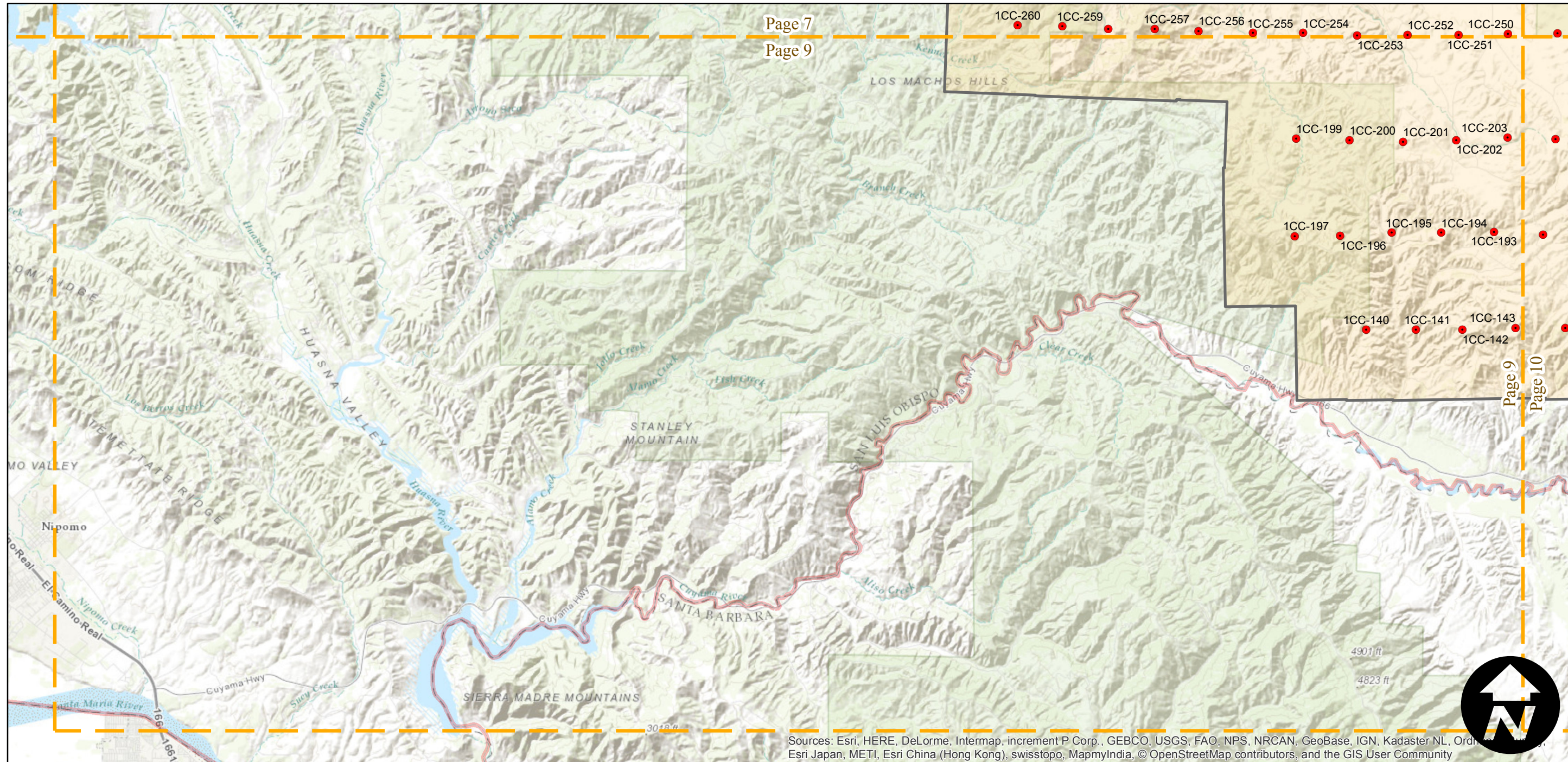
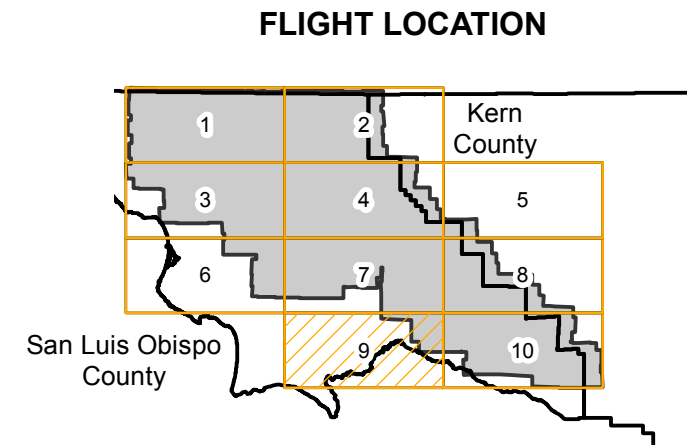


# AXH-1963

Counties: San Luis Obispo, Kern  
 Flight date(s): 06-20-1963 to 07-08-1963  
 Scale: 1:20,000  
 Overlap: 60%

Complete Metadata:  
<http://www.library.ucsb.edu/map-imagery-lab/aerial-photography-information>

Note: Partial coverage of San Luis Obispo County.  
 Coverage primarily does not extend to coastal areas.



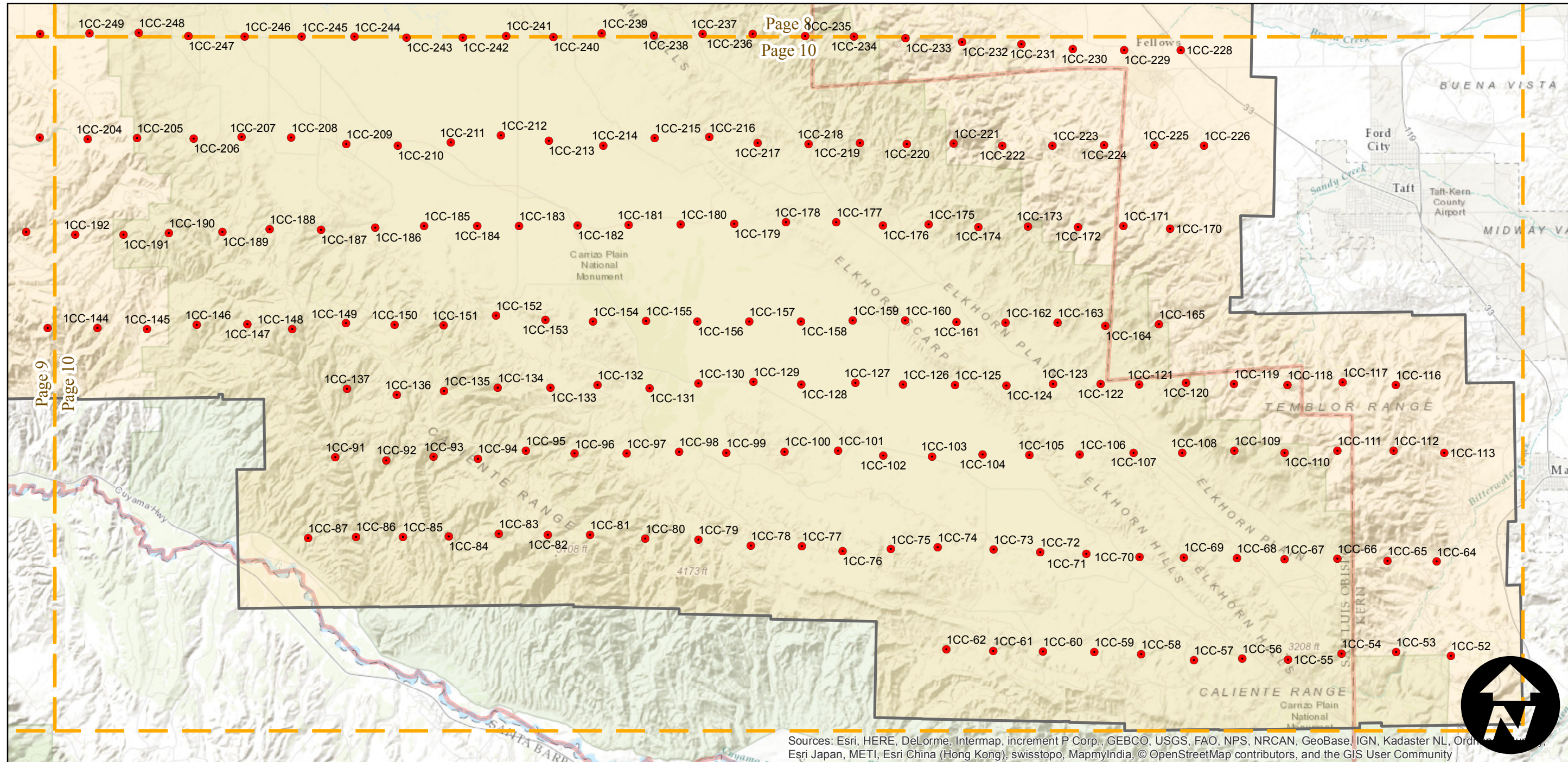
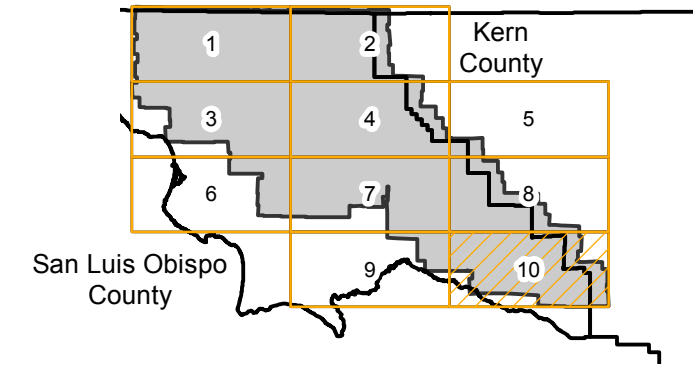
# AXH-1963

Counties: San Luis Obispo, Kern  
 Flight date(s): 06-20-1963 to 07-08-1963  
 Scale: 1:20,000  
 Overlap: 60%

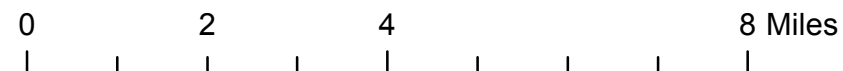
Note: Partial coverage of San Luis Obispo County.  
 Coverage primarily does not extend to coastal areas.

Complete Metadata:  
<http://www.library.ucsb.edu/map-imagery-lab/aerial-photography-information>

## FLIGHT LOCATION



Sources: Esri, HERE, DeLorme, Intermap, increment P Corp., GEBCO, USGS, FAO, NPS, NRCAN, GeoBase, IGN, Kadaster NL, Ordnance Survey, Esri Japan, METI, Esri China (Hong Kong), swisstopo, MapmyIndia, © OpenStreetMap contributors, and the GIS User Community



Index to Aerial Photography  
 Page 10 of 10

Scale of this index: 1:135,000