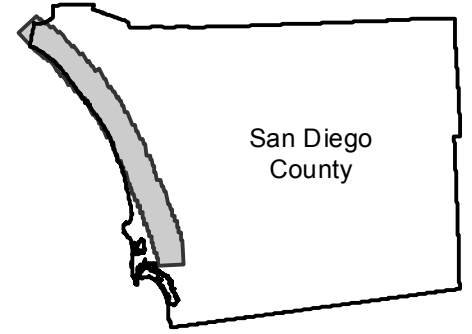


AMI-SD-66

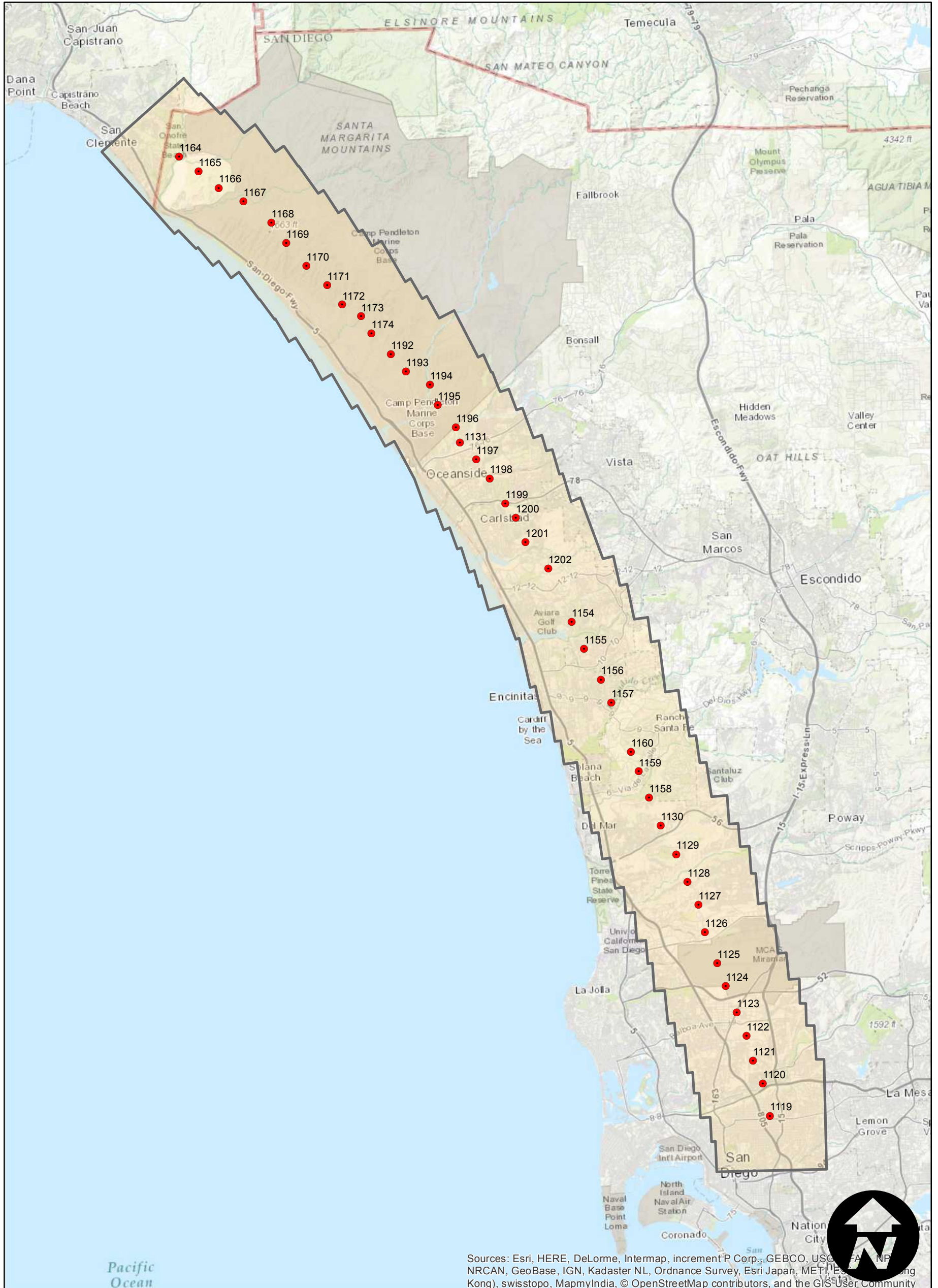
Counties: San Diego
Flight date(s): 03-04-1966
Scale: 1:36,000
Overlap: 60%

Note: San Diego County coastline from San Clemente to downtown San Diego. Areas covered include Oceanside, Carlsbad, Encinitas, and Del Mar.

FLIGHT LOCATION



Complete Metadata:
<http://www.library.ucsb.edu/mil/aerial-photography-tools>



Sources: Esri, HERE, DeLorme, Intermap, increment P Corp., GEBCO, USGS, FAO, NPS, NRCAN, GeoBase, IGN, Kadaster NL, Ordnance Survey, Esri Japan, METI, Esri (China), Swisstopo, MapmyIndia, © OpenStreetMap contributors, and the GIS User Community

0 3 6 12 Miles

Index to Aerial Photography
Page 1 of 1

Scale of this index: 1:290,000