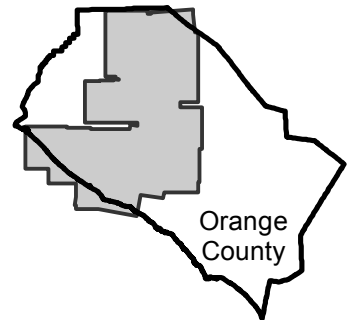


AMI-OC-68A

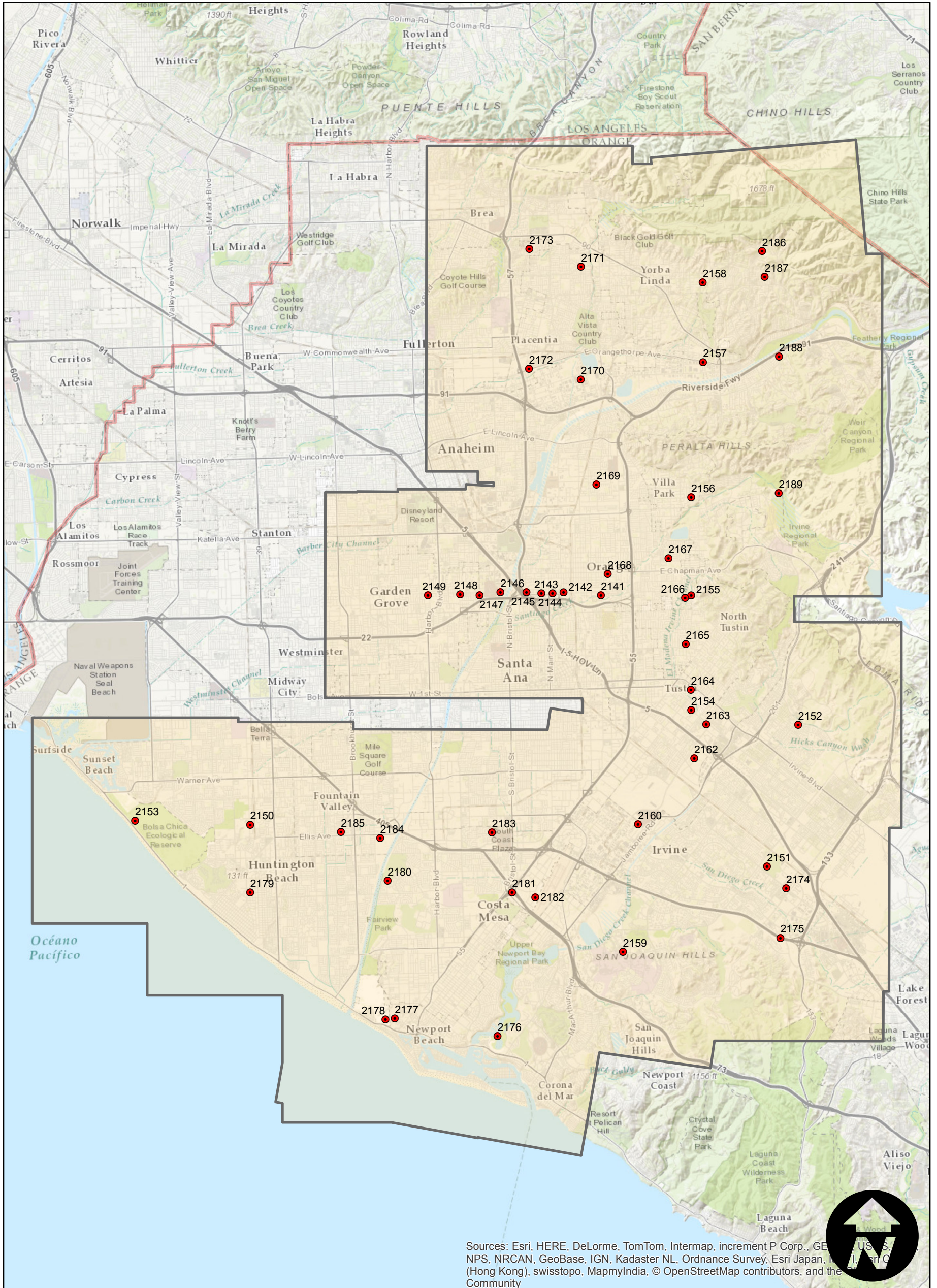
Counties: Orange
 Flight date(s): 05-15-1968
 Scale: 1:36,000
 Overlap: 10-40%

Note: Vicinity of Brea and Chino Hills State Park to Sunset Beach and Lake Forest. Areas covered include Yorba Linda, Orange, Irvine, Huntington Beach, and Newport Beach.

FLIGHT LOCATION



Complete Metadata:
<http://www.library.ucsb.edu/mil/aerial-photography-tools>



Sources: Esri, HERE, DeLorme, TomTom, Intermap, increment P Corp., GEBCO, USGS, NPS, NRCAN, GeoBase, IGN, Kadaster NL, Ordnance Survey, Esri Japan, Swisstopo (Hong Kong), swisstopo, MapmyIndia, © OpenStreetMap contributors, and the Community

0 1 2 4 Miles