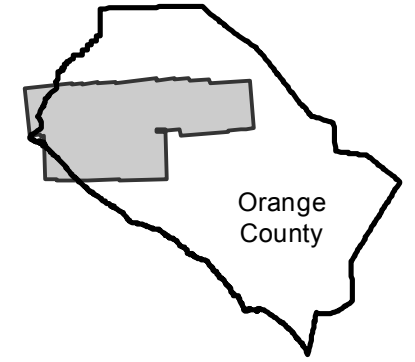


AMI-OC-67A

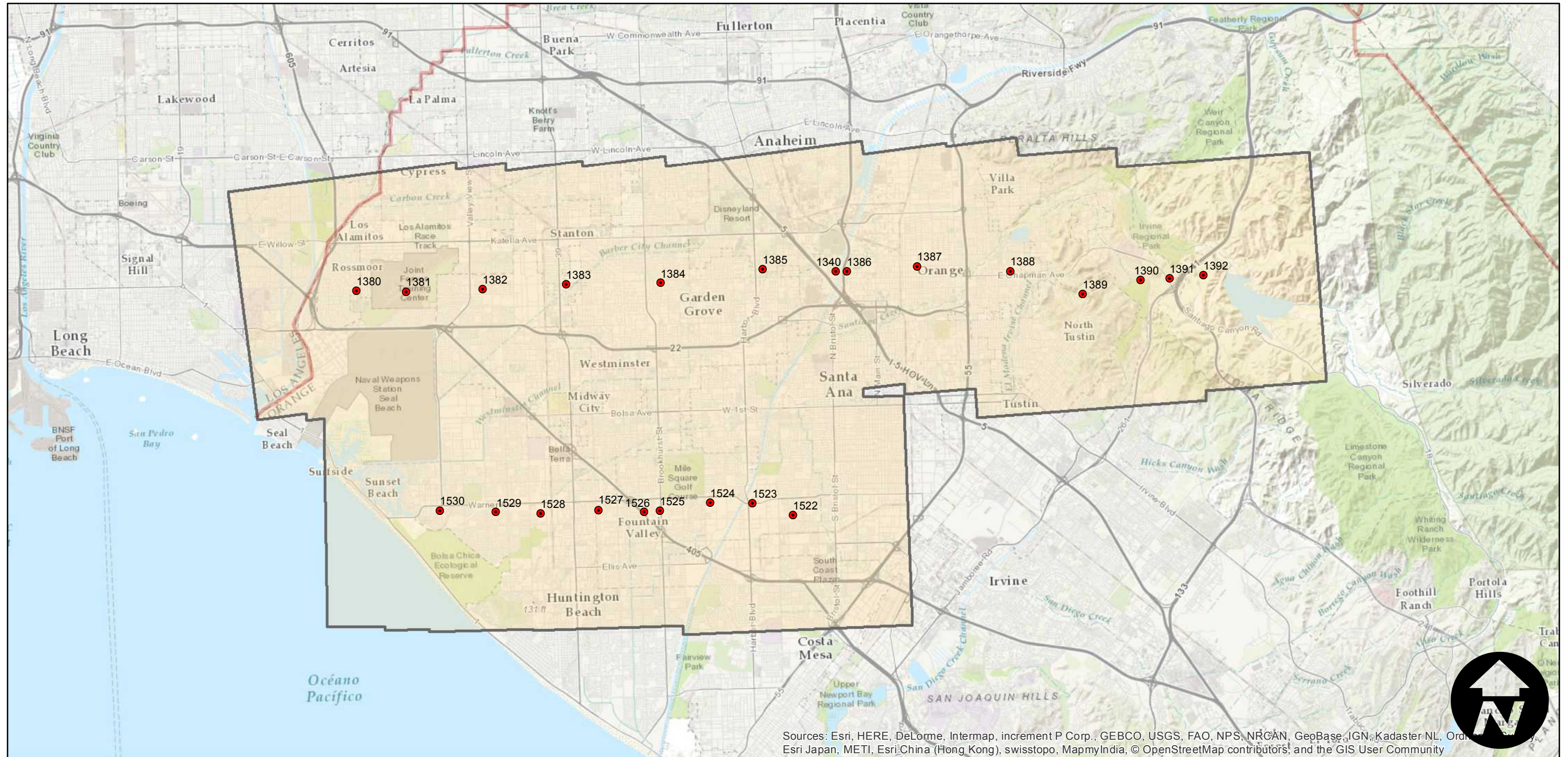
Counties: Orange
Flight date(s): 02-17-1967 to 03-30-1967
Scale: 1:36,000
Overlap: 60%

Note: Los Alamitos to Irvine Regional Park; Sunset Beach to Costa Mesa. Areas covered include Orange, Tustin, Garden Grove, and Fountain Valley.

FLIGHT LOCATION



Complete Metadata:
<http://www.library.ucsb.edu/mil/aerial-photography-tools>



Sources: Esri, HERE, DeLorme, Intermap, increment P Corp., GEBCO, USGS, FAO, NPS, NRCAN, GeoBase, IGN, Kadaster NL, Ordnance Survey, Esri Japan, METI, Esri China (Hong Kong), swisstopo, MapmyIndia, © OpenStreetMap contributors, and the GIS User Community

