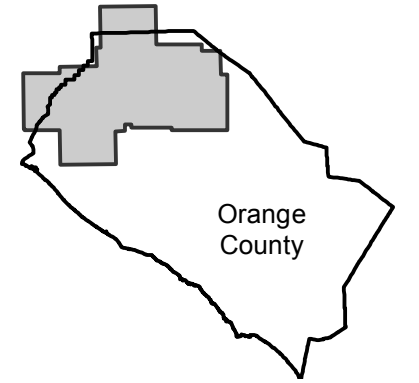


AMI-OC-66B

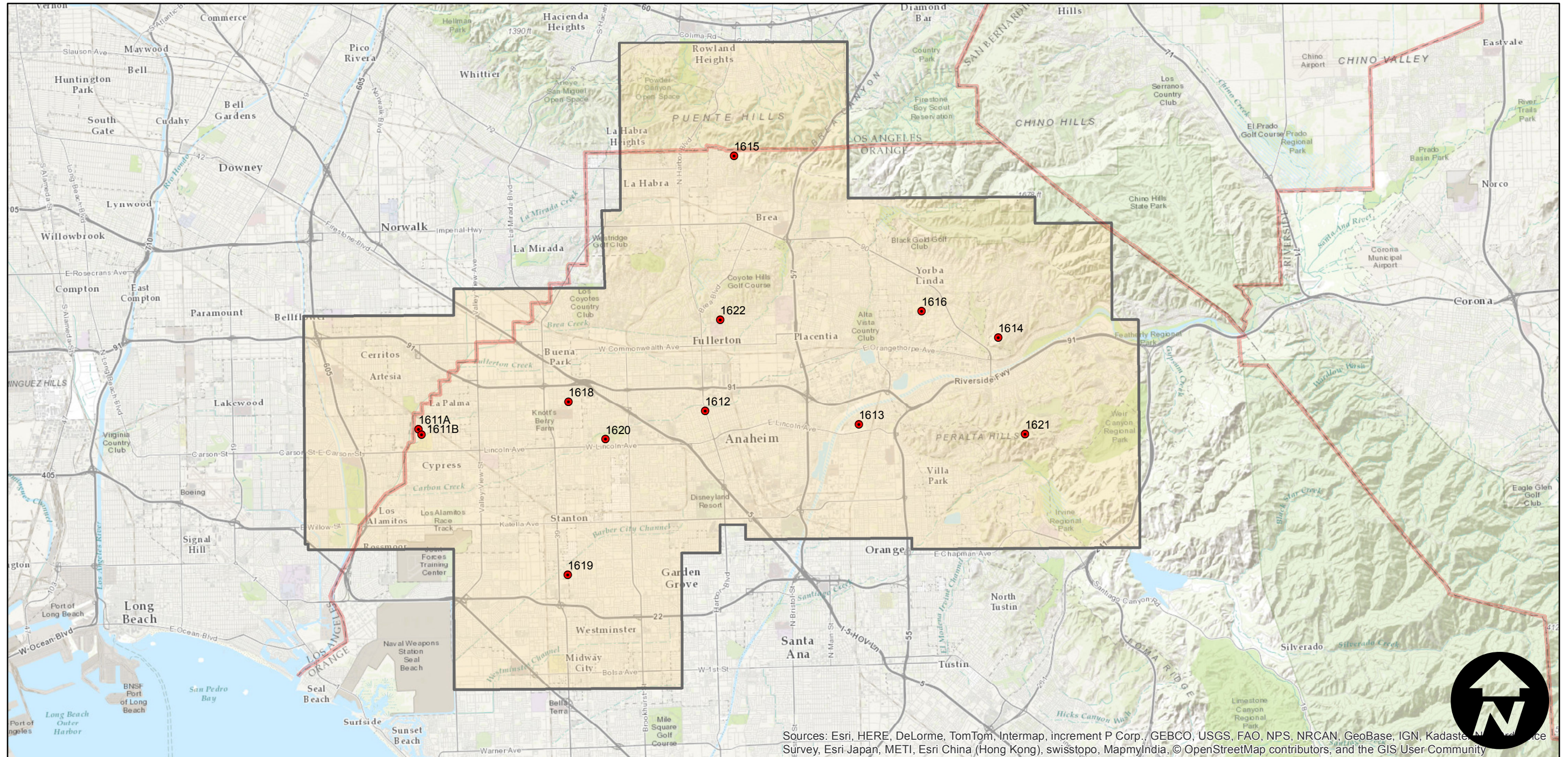
Counties: Orange
Flight date(s): 01-13-1966
Scale: 1:38,000
Overlap: 30%

Note: North Orange County. La Habra to Westminster. La Palma to Yorba Linda. Areas covered include Brea, Fullerton, and Anaheim.

FLIGHT LOCATION



Complete Metadata:
<http://www.library.ucsb.edu/mil/aerial-photography-tools>



Sources: Esri, HERE, DeLorme, TomTom, Intermap, increment P Corp., GEBCO, USGS, FAO, NPS, NRCAN, GeoBase, IGN, Kadaster, Nippon, Survey, Esri Japan, METI, Esri China (Hong Kong), swisstopo, MapmyIndia, © OpenStreetMap contributors, and the GIS User Community

0 2 4 8 Miles

Index to Aerial Photography
Page 1 of 1

Scale of this index: 1:175,000