

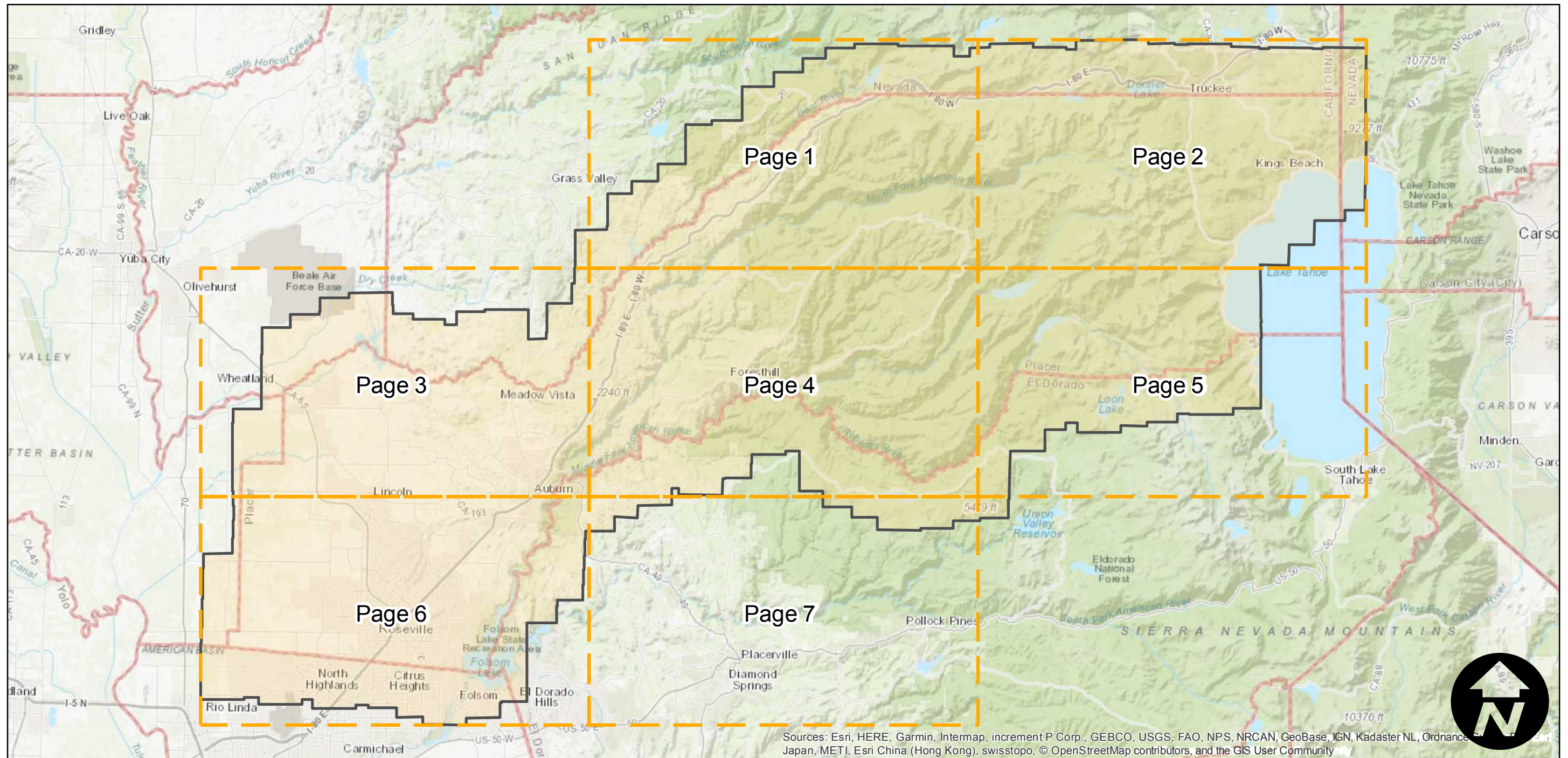
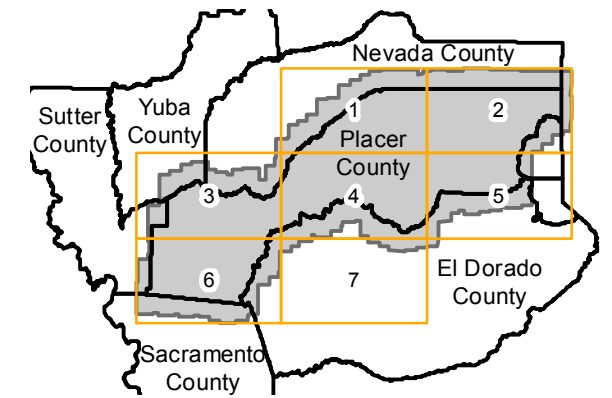
ABM-1952

Counties: Placer, El Dorado, Sacramento, Yuba, Sutter
 Flight date(s): 07-18-1952 to 08-24-1952
 Scale: 1:20,000
 Overlap: 60-95%

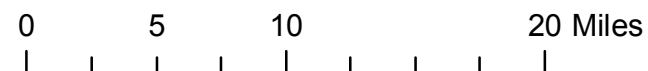
Note: Placer County. Flight coverage extends into surrounding counties.

Complete Metadata:
<https://www.library.ucsb.edu/src/airphotos/aerial-photography-information>

FLIGHT LOCATION



Sources: Esri, HERE, Garmin, Intermap, increment P Corp., GEBCO, USGS, FAO, NPS, NRCAN, GeoBase, IGN, Kadaster NL, Ordnance Survey, Esri Japan, METI, Esri China (Hong Kong), swisstopo, © OpenStreetMap contributors, and the GIS User Community



Index to Aerial Photography
 Page Key

Scale of this index: 1:470,000



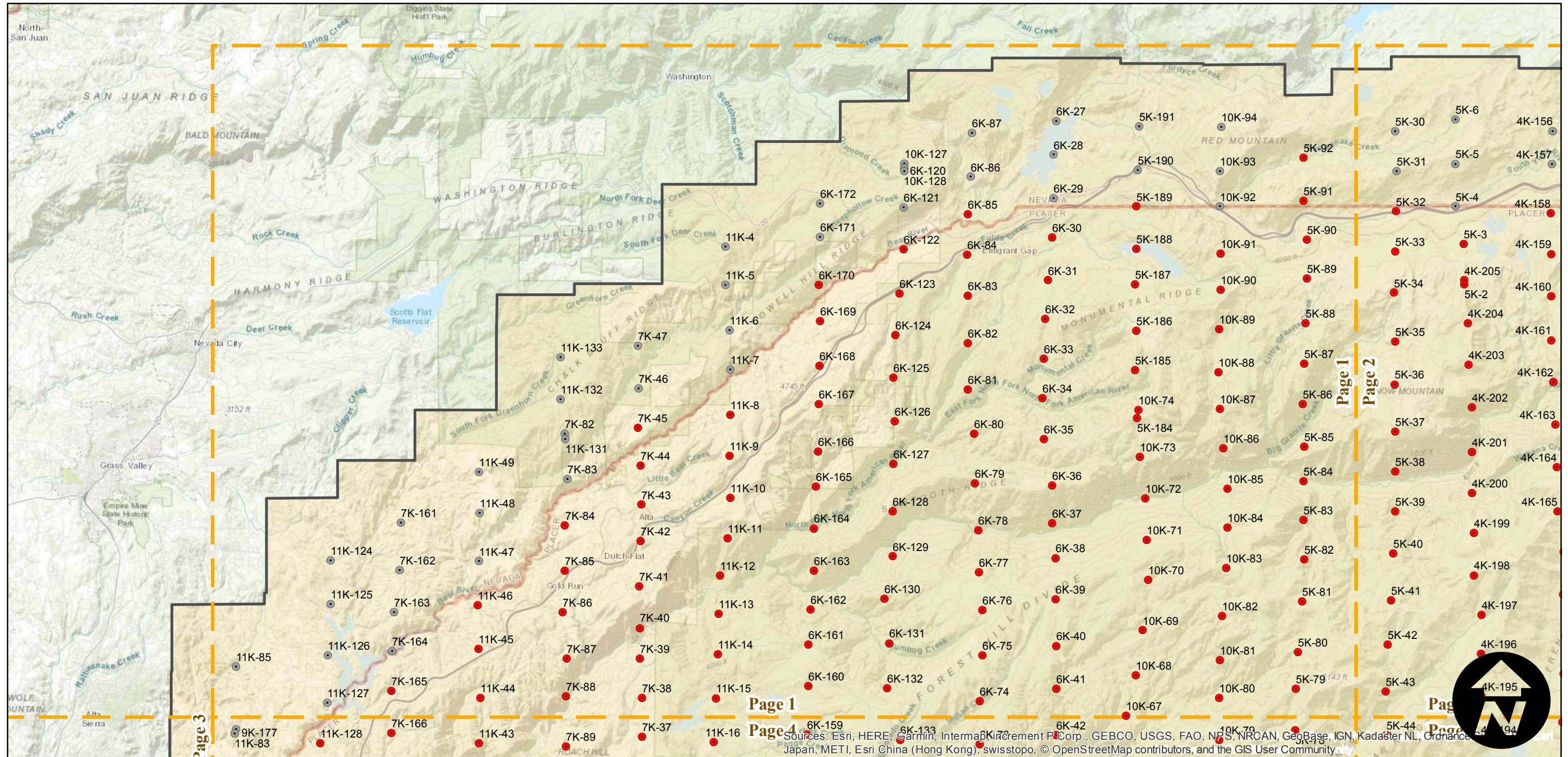
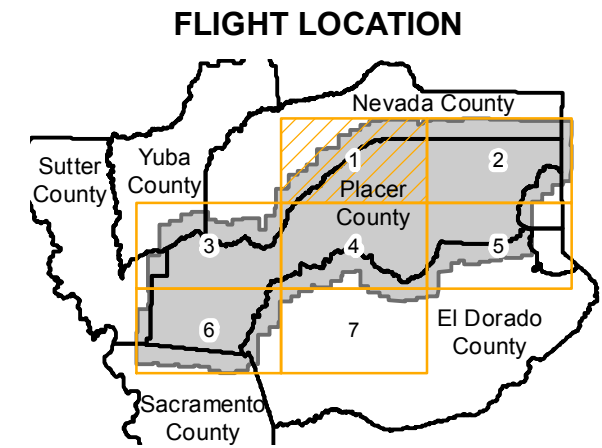
ABM-1952

Counties: Placer, El Dorado, Sacramento, Yuba, Sutter
 Flight date(s): 07-18-1952 to 08-24-1952
 Scale: 1:20,000
 Overlap: 60-95%

Complete Metadata:
<https://www.library.ucsb.edu/src/airphotos/aerial-photography-information>

Note: Placer County. Flight coverage extends into surrounding counties.

- MIL owns frame
- MIL does not own frame



0 3 6 12 Miles

Index to Aerial Photography
 Page 1 of 7

Scale of this index: 1:160,000

Sources: Esri, HERE, Garmin, Intermap, increment P Corp., GEBCO, USGS, FAO, NPS, NRCAN, GeBCo, IGN, Kadaster NL, Ordnance Survey, Esri Japan, METI, Esri China (Hong Kong), swisstopo, © OpenStreetMap contributors, and the GIS User Community

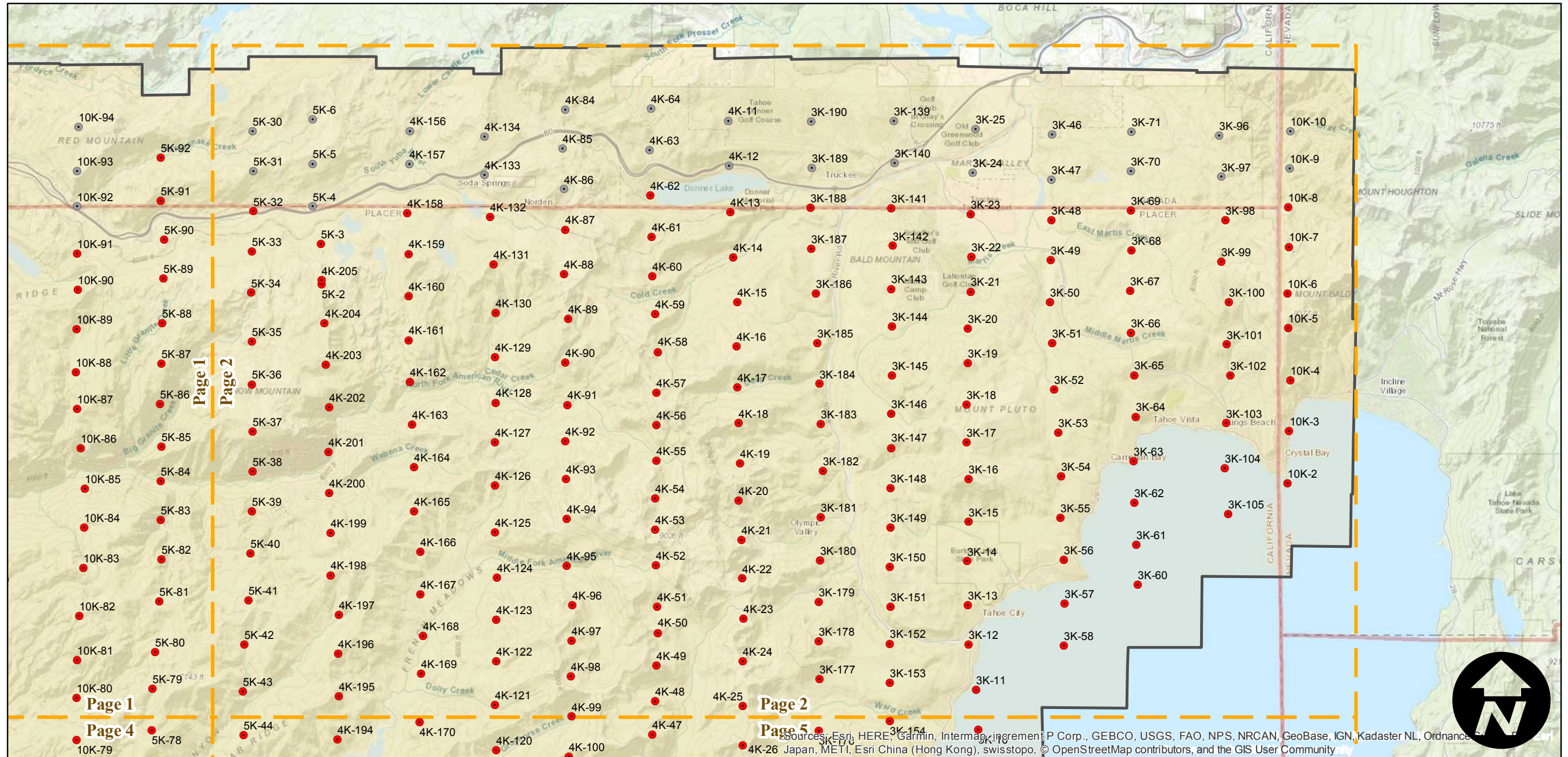
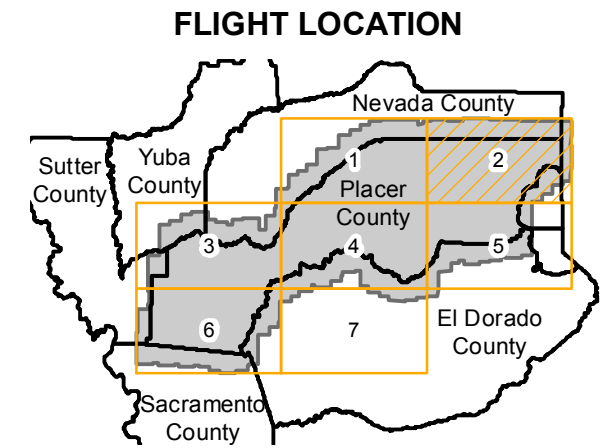
ABM-1952

Counties: Placer, El Dorado, Sacramento, Yuba, Sutter
 Flight date(s): 07-18-1952 to 08-24-1952
 Scale: 1:20,000
 Overlap: 60-95%

Complete Metadata:
<https://www.library.ucsb.edu/src/airphotos/aerial-photography-information>

Note: Placer County. Flight coverage extends into surrounding counties.

- MIL owns frame
- MIL does not own frame



0 3 6 12 Miles

Index to Aerial Photography
 Page 2 of 7

Scale of this index: 1:160,000

Sources: Esri, HERE, Garmin, Intermap, increment P Corp., GEBCO, USGS, FAO, NPS, NRCAN, GeoBase, IGN, Kadaster NL, Ordnance Survey, Esri Japan, METI, Esri China (Hong Kong), swisstopo, © OpenStreetMap contributors, and the GIS User Community

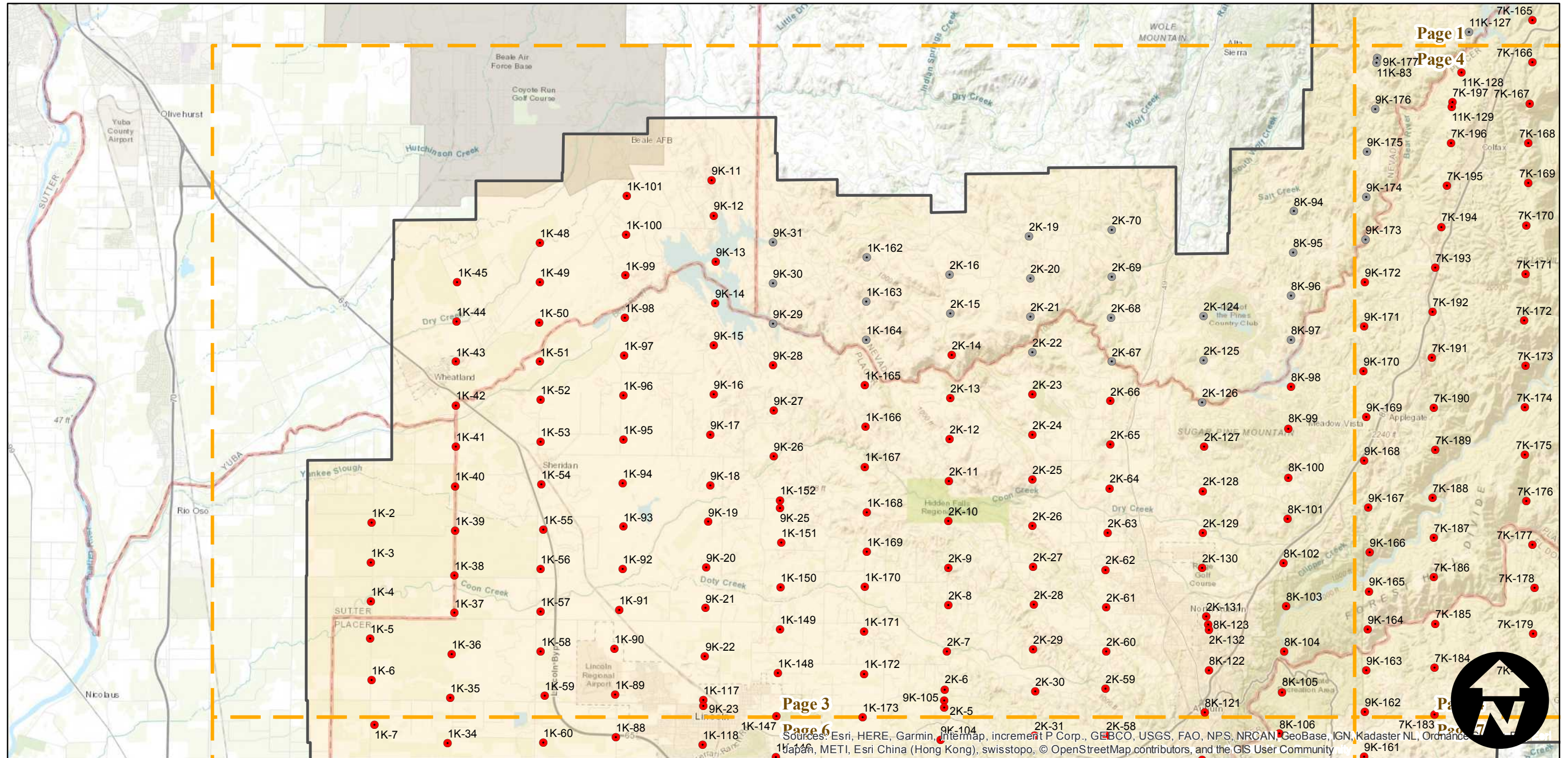
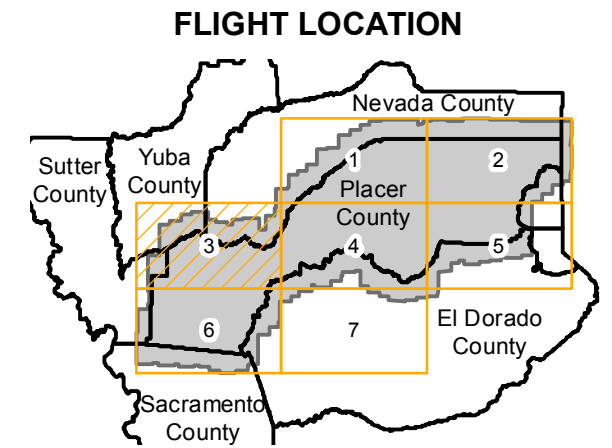
ABM-1952

Counties: Placer, El Dorado, Sacramento, Yuba, Sutter
 Flight date(s): 07-18-1952 to 08-24-1952
 Scale: 1:20,000
 Overlap: 60-95%

Complete Metadata:
<https://www.library.ucsb.edu/src/airphotos/aerial-photography-information>

Note: Placer County. Flight coverage extends into surrounding counties.

- MIL owns frame
- MIL does not own frame



Sources: Esri, HERE, Garmin, Intermap, increment P Corp., GEBCO, USGS, FAO, NPS, NRCAN, GeoBase, IGN, Kadaster NL, Ordnance Survey, Esri Japan, METI, Esri China (Hong Kong), swisstopo, © OpenStreetMap contributors, and the GIS User Community



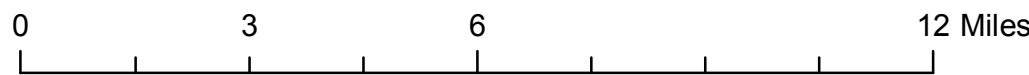
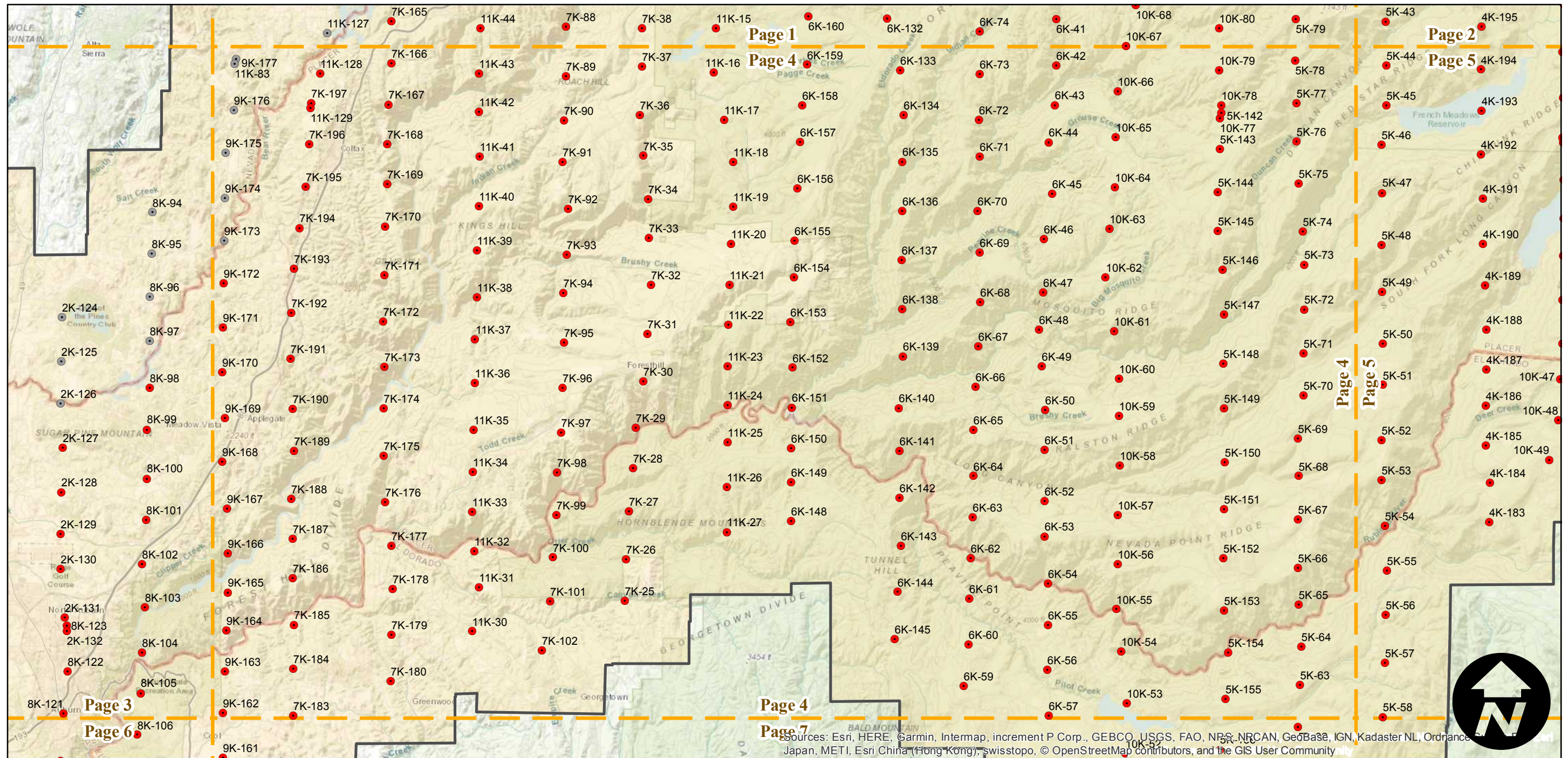
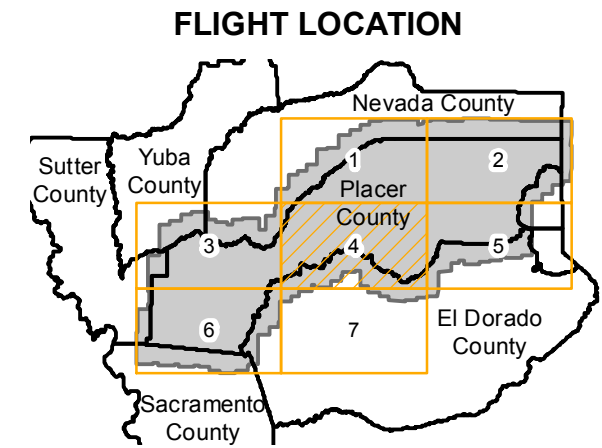
ABM-1952

Counties: Placer, El Dorado, Sacramento, Yuba, Sutter
 Flight date(s): 07-18-1952 to 08-24-1952
 Scale: 1:20,000
 Overlap: 60-95%

Complete Metadata:
<https://www.library.ucsb.edu/src/airphotos/aerial-photography-information>

Note: Placer County. Flight coverage extends into surrounding counties.

- MIL owns frame
- MIL does not own frame



Index to Aerial Photography
 Page 4 of 7

Scale of this index: 1:160,000

Sources: Esri, HERE, Garmin, Intermap, increment P Corp., GEBCO, USGS, FAO, NPS, NRCAN, GeoBase, IGN, Kadaster NL, Ordnance Survey, Esri Japan, METI, Esri China (Hong Kong), swisstopo, © OpenStreetMap contributors, and the GIS User Community

ABM-1952

Counties: Placer, El Dorado, Sacramento, Yuba, Sutter

Flight date(s): 07-18-1952 to 08-24-1952

Scale: 1:20,000

Overlap: 60-95%

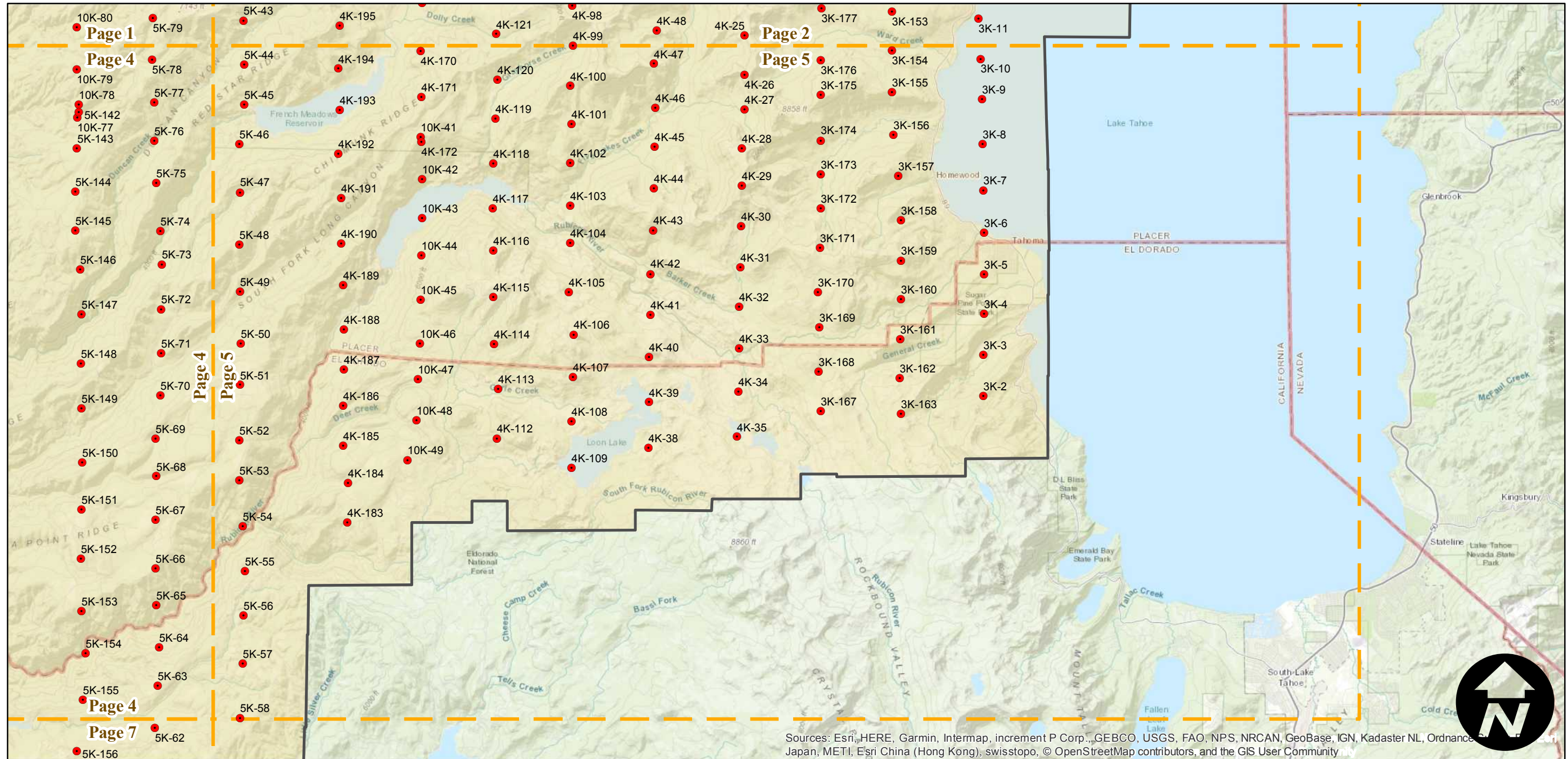
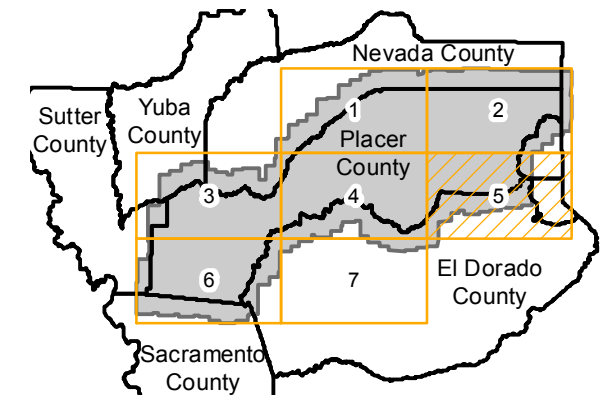
Complete Metadata:

<https://www.library.ucsb.edu/src/airphotos/aerial-photography-information>

Note: Placer County. Flight coverage extends into surrounding counties.

- MIL owns frame
- MIL does not own frame

FLIGHT LOCATION



Sources: Esri, HERE, Garmin, Intermap, increment P Corp., GEBCO, USGS, FAO, NPS, NRCAN, GeoBase, IGN, Kadaster NL, Ordnance Survey, Esri Japan, METI, Esri China (Hong Kong), swisstopo, © OpenStreetMap contributors, and the GIS User Community

0 3 6 12 Miles

Index to Aerial Photography
Page 5 of 7

Scale of this index: 1:160,000



ABM-1952

Counties: Placer, El Dorado, Sacramento, Yuba, Sutter

Flight date(s): 07-18-1952 to 08-24-1952

Scale: 1:20,000

Overlap: 60-95%

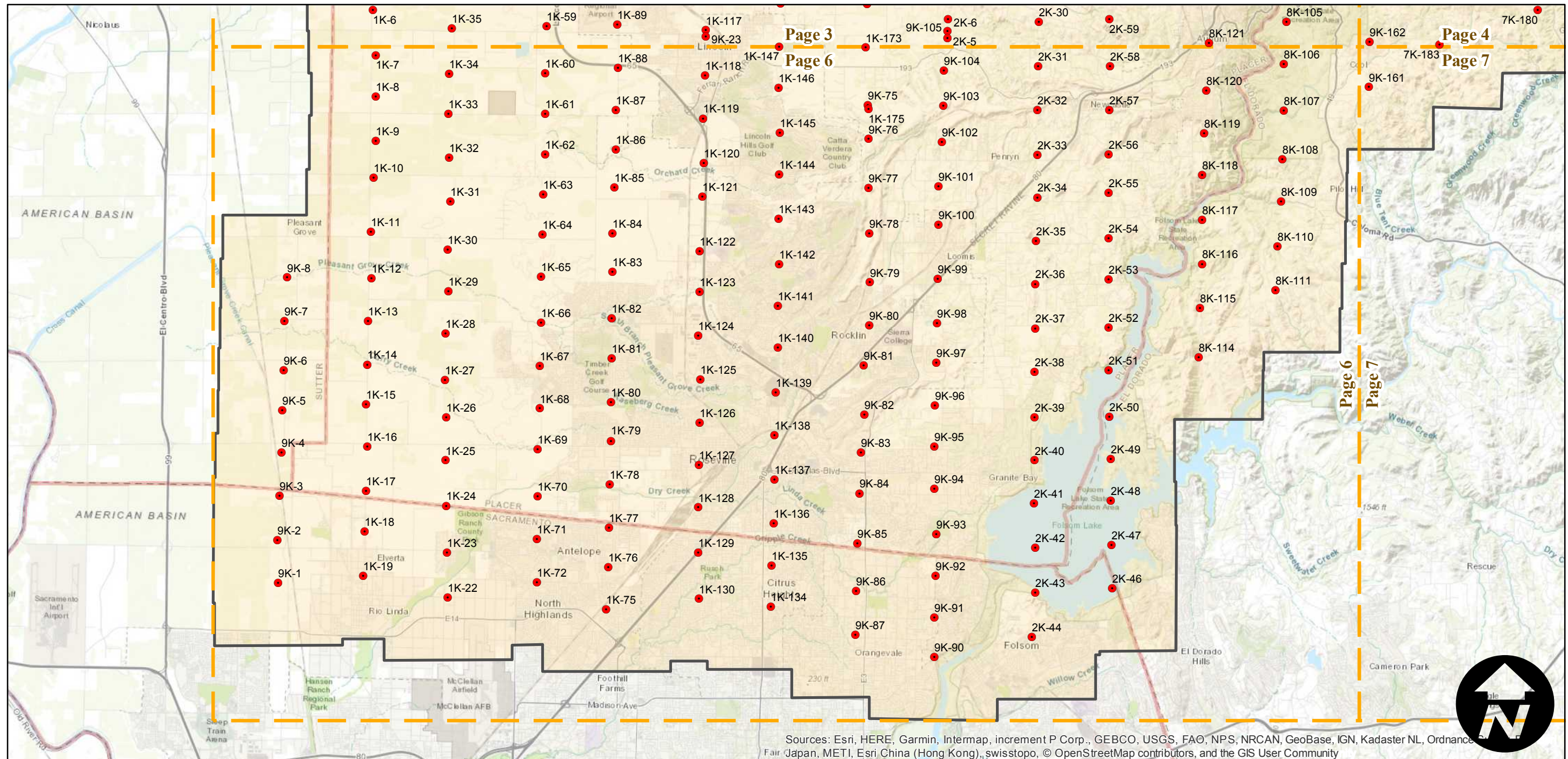
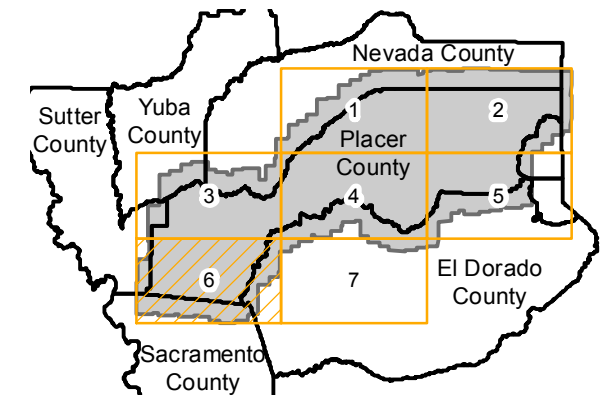
Complete Metadata:

<https://www.library.ucsb.edu/src/airphotos/aerial-photography-information>

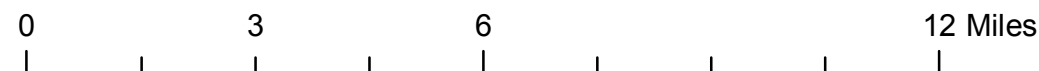
Note: Placer County. Flight coverage extends into surrounding counties.

- MIL owns frame
- MIL does not own frame

FLIGHT LOCATION



Sources: Esri, HERE, Garmin, Intermap, increment P Corp., GEBCO, USGS, FAO, NPS, NRCAN, GeoBase, IGN, Kadaster NL, Ordnance Survey, Esri Japan, METI, Esri China (Hong Kong), swisstopo, © OpenStreetMap contributors, and the GIS User Community



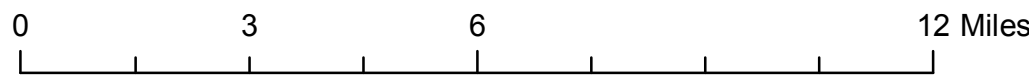
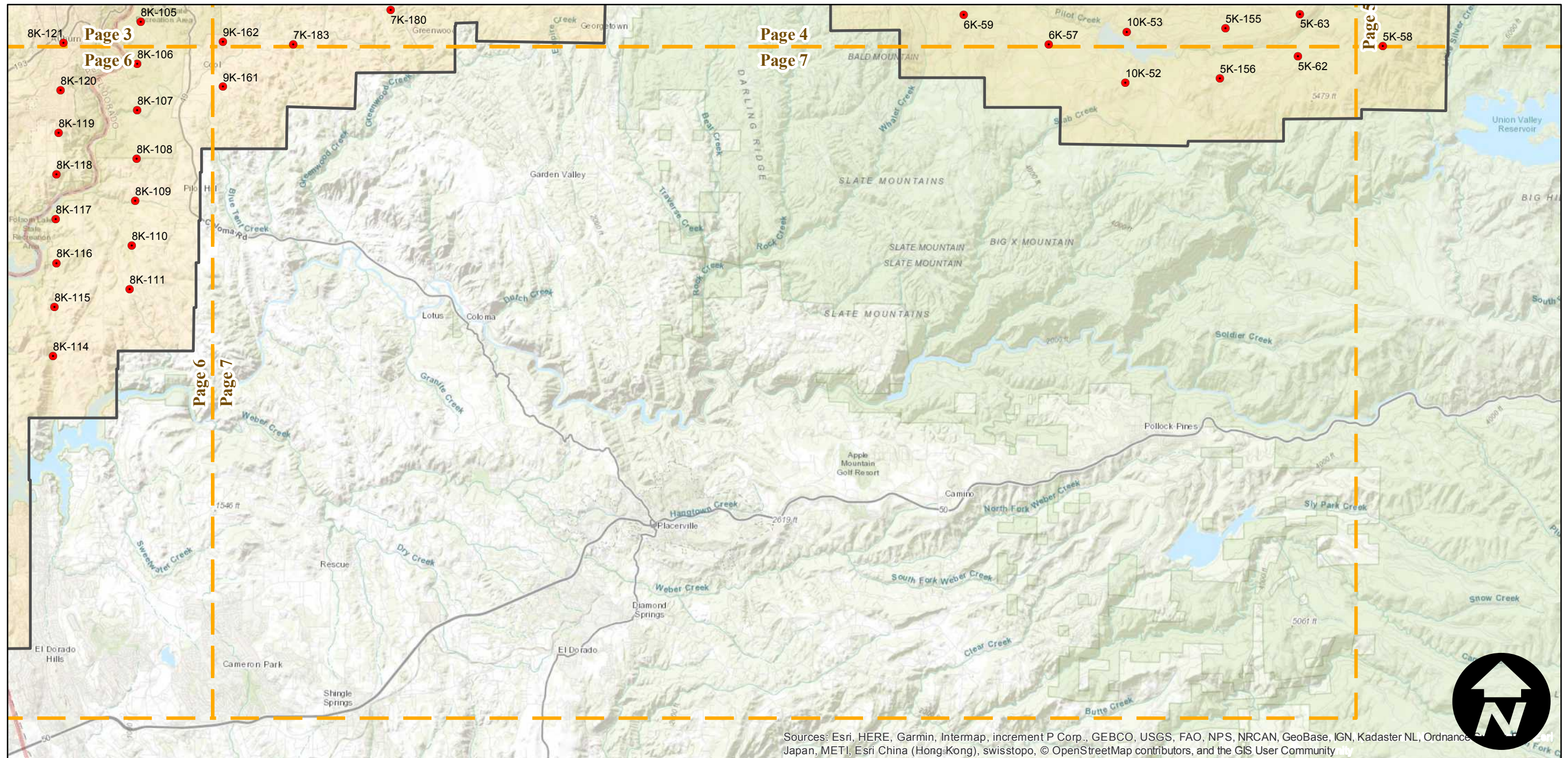
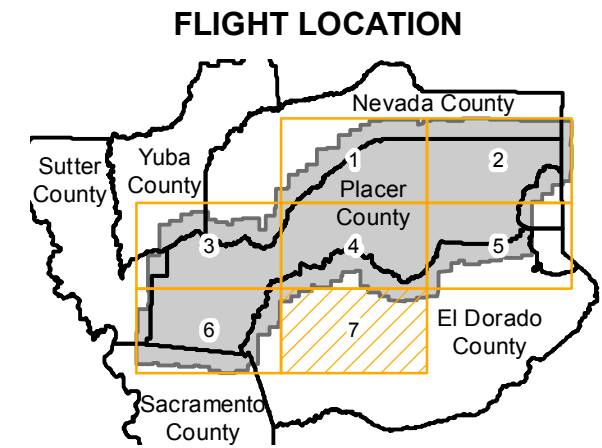
ABM-1952

Counties: Placer, El Dorado, Sacramento, Yuba, Sutter
 Flight date(s): 07-18-1952 to 08-24-1952
 Scale: 1:20,000
 Overlap: 60-95%

Complete Metadata:
<https://www.library.ucsb.edu/src/airphotos/aerial-photography-information>

Note: Placer County. Flight coverage extends into surrounding counties.

- MIL owns frame
- MIL does not own frame



Sources: Esri, HERE, Garmin, Intermap, increment P Corp., GEBCO, USGS, FAO, NPS, NRCAN, GeoBase, IGN, Kadaster NL, Ordnance Survey, Esri Japan, METI, Esri China (Hong Kong), swisstopo, © OpenStreetMap contributors, and the GIS User Community