

ABL-1952

Counties: Kern
Flight date(s): 10-11-1952 to 12-09-1952
Scale: 1:20,000
Overlap: 60%

Complete Metadata:
<http://www.library.ucsb.edu/mil/aerial-photography-tools>

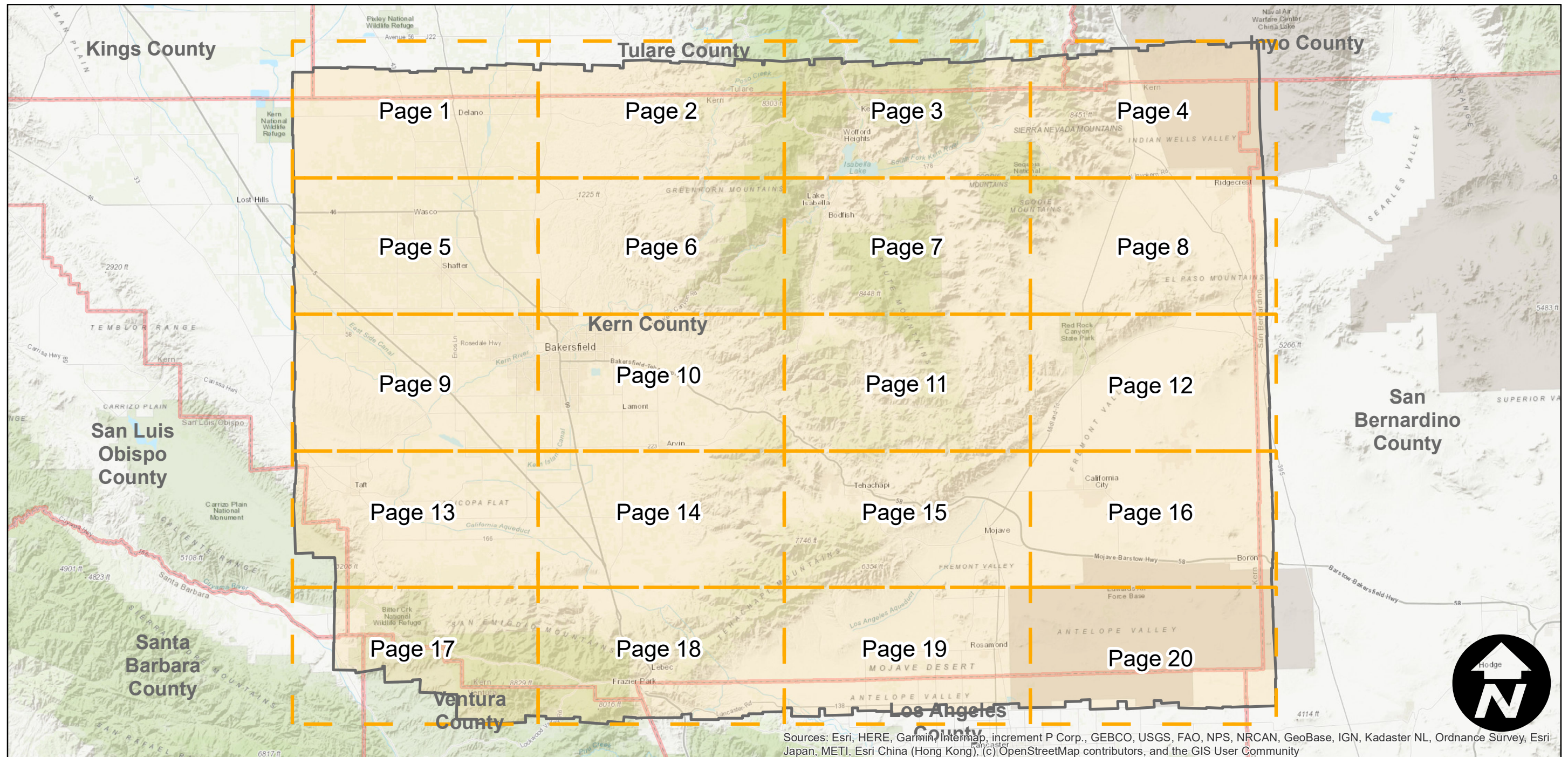
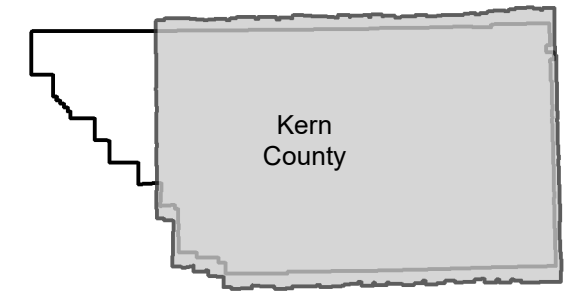
Note: 18" x 18" prints of the following frames are located in the oversize collection:

19K: 6, 7, 8, 9, 10, 11, 68, 69, 70, 71, 72, 73, 74, 75, 87, 88, 89, 90, 91, 134, 135, 136, 137, 138, 139, 140, 153, 156, 159, 158, 159, 160, 161, 211, 212, 213

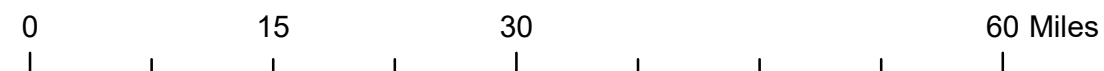
20K: 23, 24, 41 42, 43, 44, 45, 46, 47

22K: 35, 36

FLIGHT LOCATION



Sources: Esri, HERE, Garmin, Intermap, increment P Corp., GEBCO, USGS, FAO, NPS, NRCAN, GeoBase, IGN, Kadaster NL, Ordnance Survey, Esri-Japan, METI, Esri China (Hong Kong), (c) OpenStreetMap contributors, and the GIS User Community



Index to Aerial Photography
Page Key

Scale of this index: 1:750,000

ABL-1952

Counties: Kern
 Flight date(s): 10-11-1952 to 12-09-1952
 Scale: 1:20,000
 Overlap: 60%

Complete Metadata:
<http://www.library.ucsb.edu/mil/aerial-photography-tools>

- MIL owns frame
- MIL does not own frame

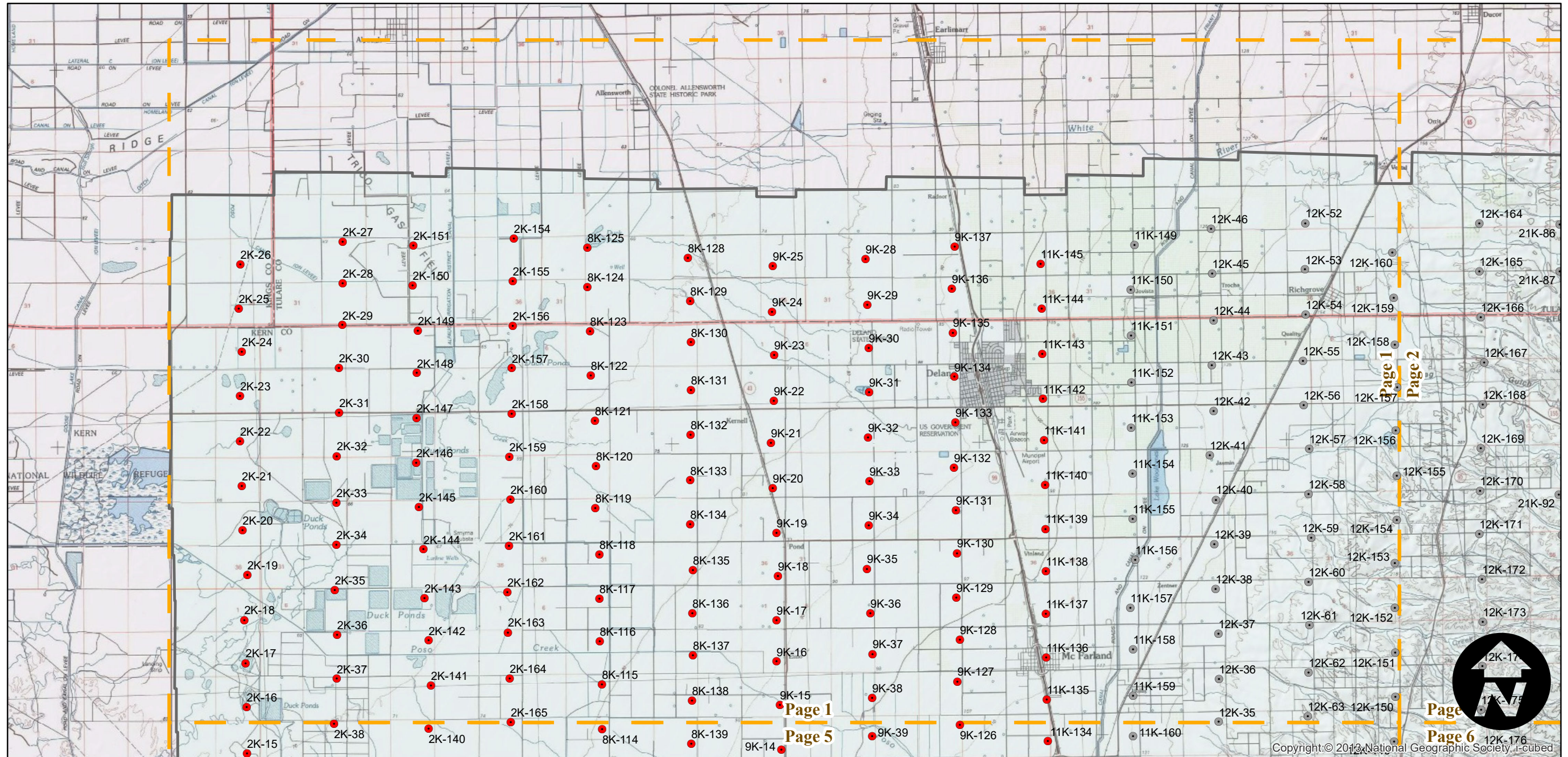
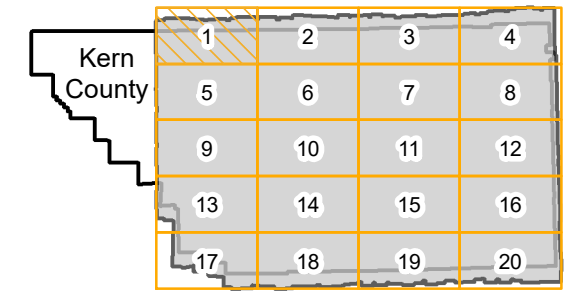
Note: 18" x 18" prints of the following frames are located in the oversize collection:

19K: 6, 7, 8, 9, 10, 11, 68, 69, 70, 71, 72, 73, 74, 75, 87, 88, 89, 90, 91, 134, 135, 136, 137, 138, 139, 140, 153, 156, 159, 158, 159, 160, 161, 211, 212, 213

20K: 23, 24, 41 42, 43, 44, 45, 46, 47

22K: 35, 36

FLIGHT LOCATION



0 2.5 5 10 Miles

Index to Aerial Photography
 Page 1 of 20

Scale of this index: 1:150,000

ABL-1952

Counties: Kern
 Flight date(s): 10-11-1952 to 12-09-1952
 Scale: 1:20,000
 Overlap: 60%

Complete Metadata:
<http://www.library.ucsb.edu/mil/aerial-photography-tools>

Note: 18" x 18" prints of the following frames are located in the oversize collection:

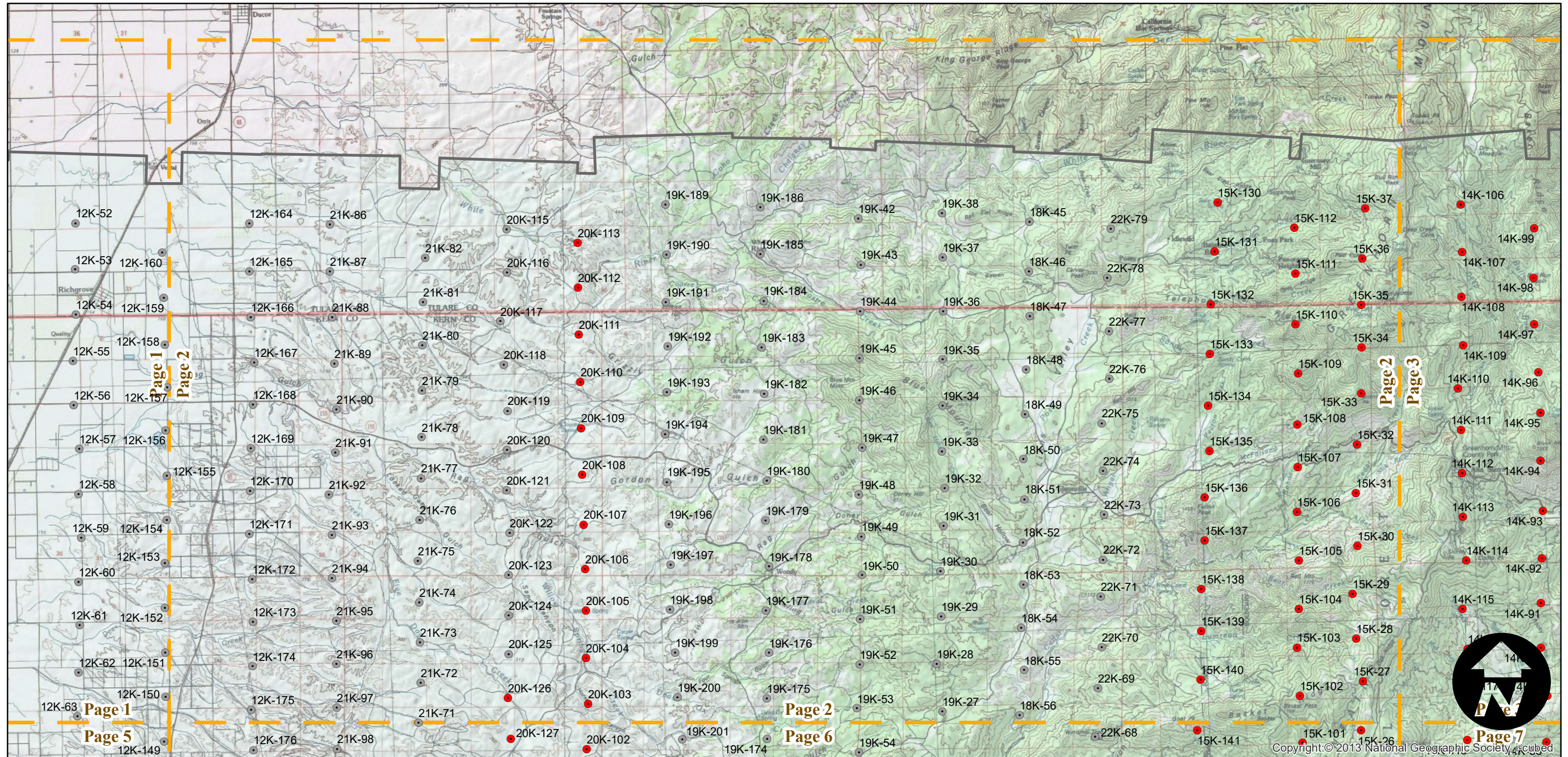
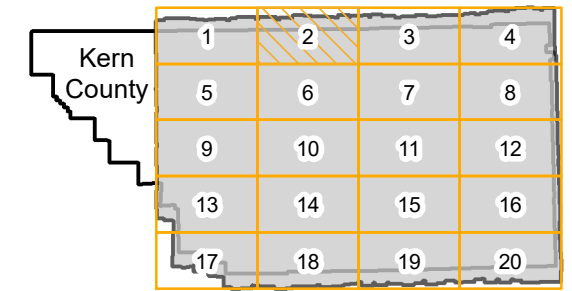
19K: 6, 7, 8, 9, 10, 11, 68, 69, 70, 71, 72, 73, 74, 75, 87, 88, 89, 90, 91, 134, 135, 136, 137, 138, 139, 140, 153, 156, 159, 158, 159, 160, 161, 211, 212, 213

20K: 23, 24, 41 42, 43, 44, 45, 46, 47

22K: 35, 36

- MIL owns frame
- MIL does not own frame

FLIGHT LOCATION



0 2.5 5 10 Miles

Index to Aerial Photography
 Page 2 of 20

Scale of this index: 1:150,000

ABL-1952

Counties: Kern
 Flight date(s): 10-11-1952 to 12-09-1952
 Scale: 1:20,000
 Overlap: 60%

Complete Metadata:
<http://www.library.ucsb.edu/mil/aerial-photography-tools>

Note: 18" x 18" prints of the following frames are located in the oversize collection:

19K: 6, 7, 8, 9, 10, 11, 68, 69, 70, 71, 72, 73, 74, 75, 87, 88, 89, 90, 91, 134, 135, 136, 137, 138, 139, 140, 153, 156, 159, 158, 159, 160, 161, 211, 212, 213

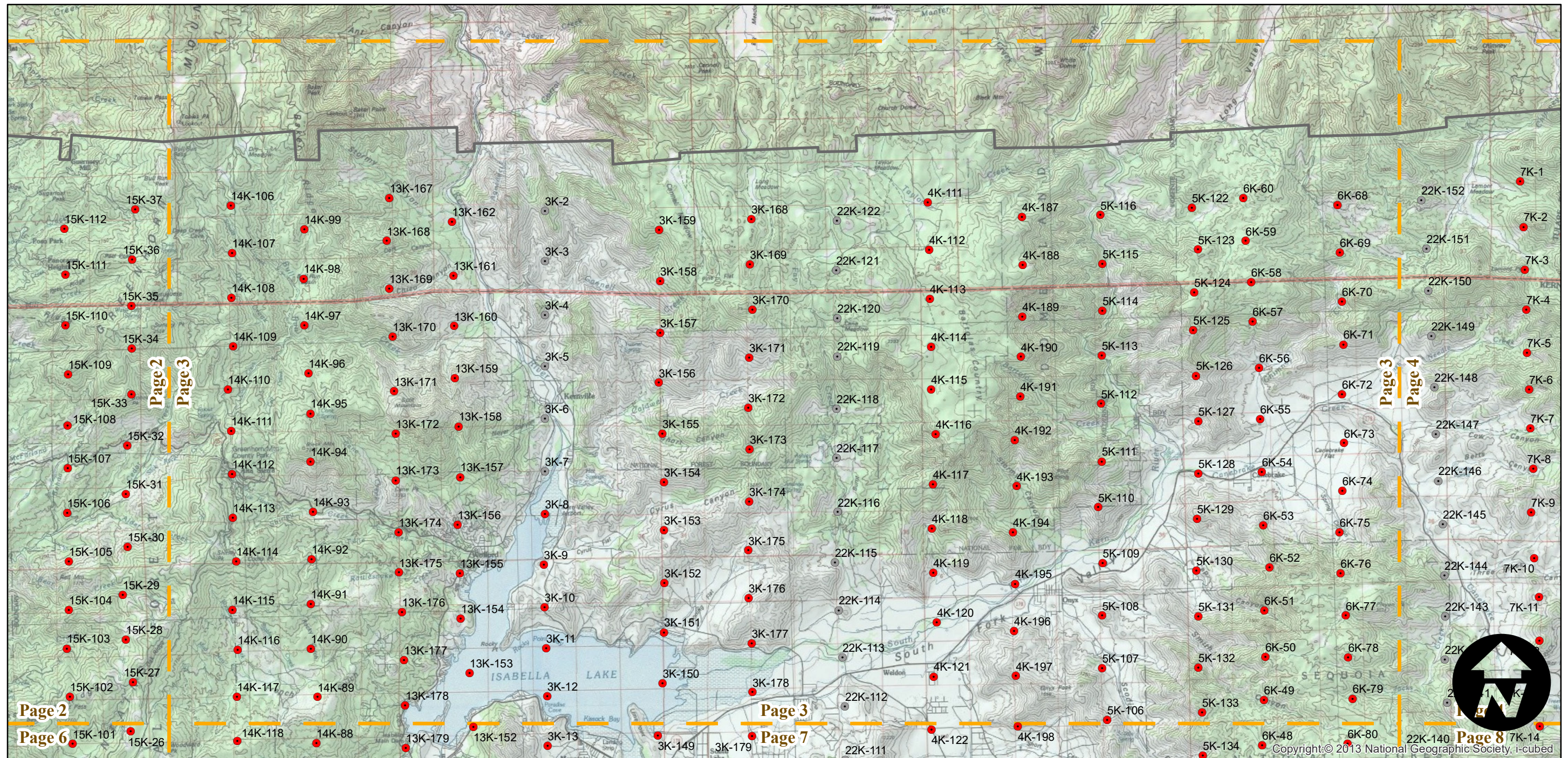
20K: 23, 24, 41 42, 43, 44, 45, 46, 47

22K: 35, 36

- MIL owns frame
- MIL does not own frame

FLIGHT LOCATION

Kern County	1	2	3	4
	5	6	7	8
	9	10	11	12
	13	14	15	16
	17	18	19	20



0 2.5 5 10 Miles

Index to Aerial Photography
 Page 3 of 20

Scale of this index: 1:150,000



Copyright: © 2013 National Geographic Society, i-cubed

ABL-1952

Counties: Kern
 Flight date(s): 10-11-1952 to 12-09-1952
 Scale: 1:20,000
 Overlap: 60%

Complete Metadata:
<http://www.library.ucsb.edu/mil/aerial-photography-tools>

Note: 18" x 18" prints of the following frames are located in the oversize collection:

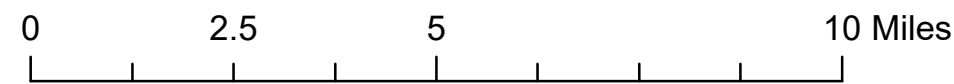
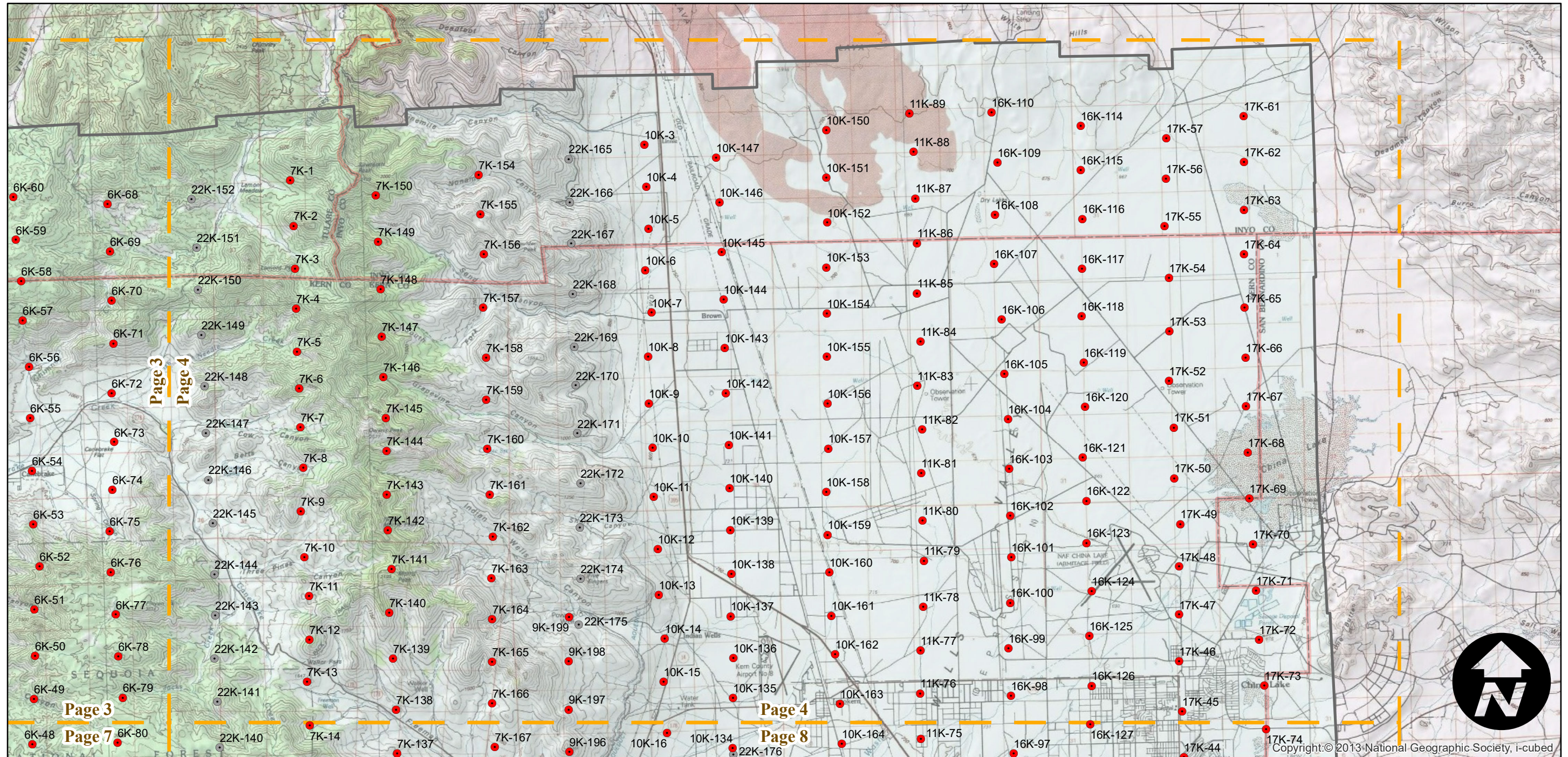
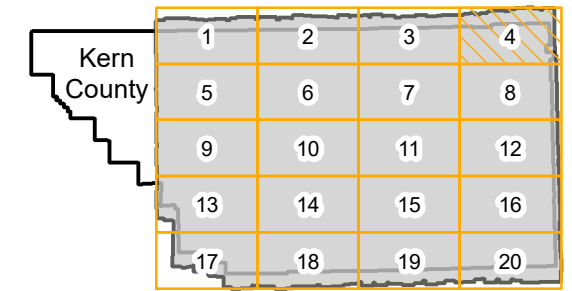
19K: 6, 7, 8, 9, 10, 11, 68, 69, 70, 71, 72, 73, 74, 75, 87, 88, 89, 90, 91, 134, 135, 136, 137, 138, 139, 140, 153, 156, 159, 158, 159, 160, 161, 211, 212, 213

20K: 23, 24, 41 42, 43, 44, 45, 46, 47

22K: 35, 36

- MIL owns frame
- MIL does not own frame

FLIGHT LOCATION



ABL-1952

Counties: Kern
 Flight date(s): 10-11-1952 to 12-09-1952
 Scale: 1:20,000
 Overlap: 60%

Complete Metadata:
<http://www.library.ucsb.edu/mil/aerial-photography-tools>

Note: 18" x 18" prints of the following frames are located in the oversize collection:

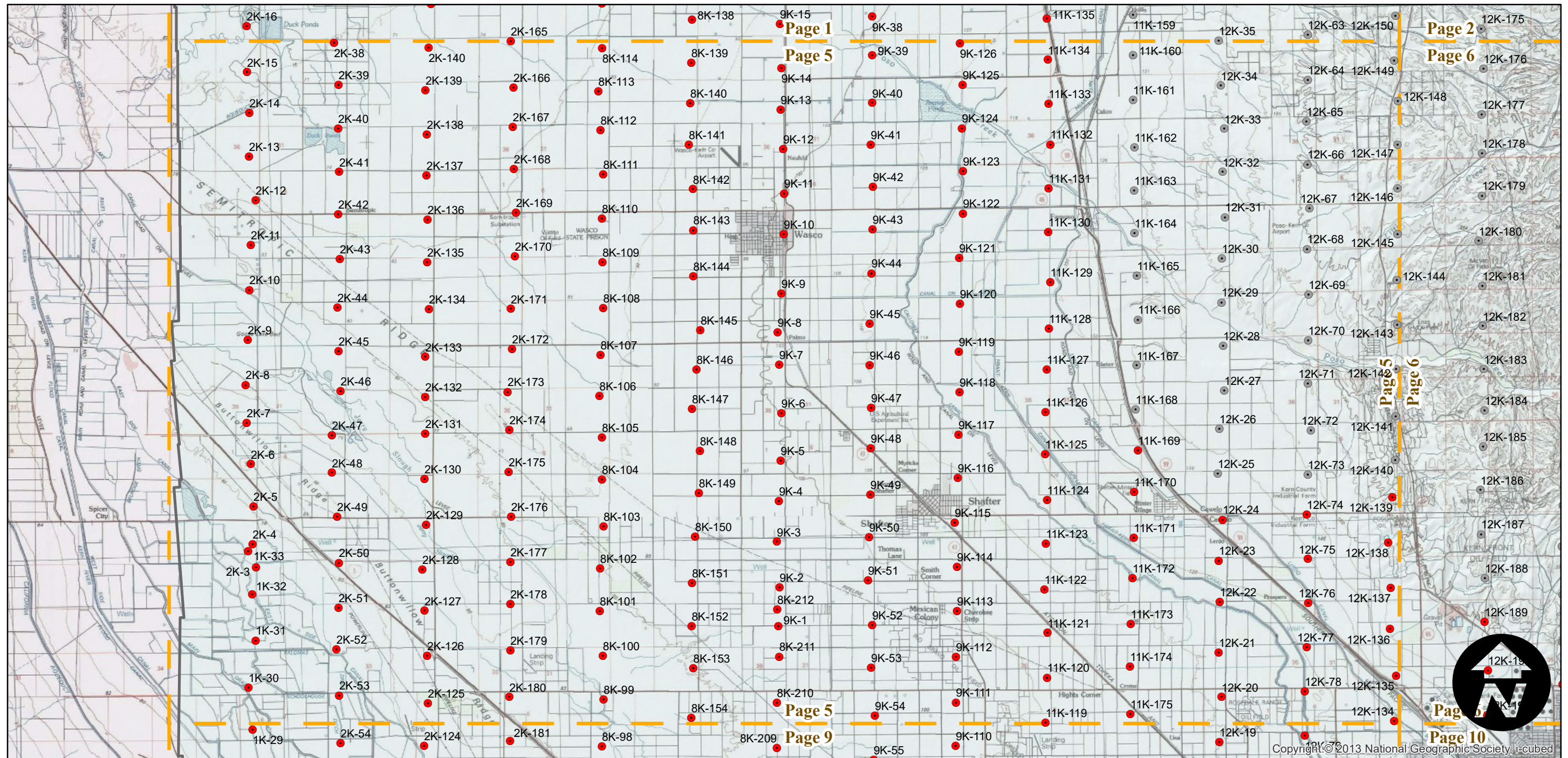
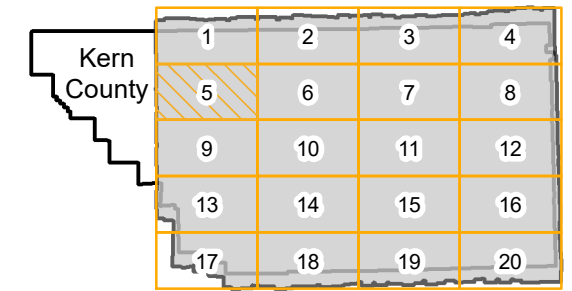
19K: 6, 7, 8, 9, 10, 11, 68, 69, 70, 71, 72, 73, 74, 75, 87, 88, 89, 90, 91, 134, 135, 136, 137, 138, 139, 140, 153, 156, 159, 158, 159, 160, 161, 211, 212, 213

20K: 23, 24, 41 42, 43, 44, 45, 46, 47

22K: 35, 36

- MIL owns frame
- MIL does not own frame

FLIGHT LOCATION



ABL-1952

Counties: Kern
 Flight date(s): 10-11-1952 to 12-09-1952
 Scale: 1:20,000
 Overlap: 60%

Complete Metadata:
<http://www.library.ucsb.edu/mil/aerial-photography-tools>

Note: 18" x 18" prints of the following frames are located in the oversize collection:

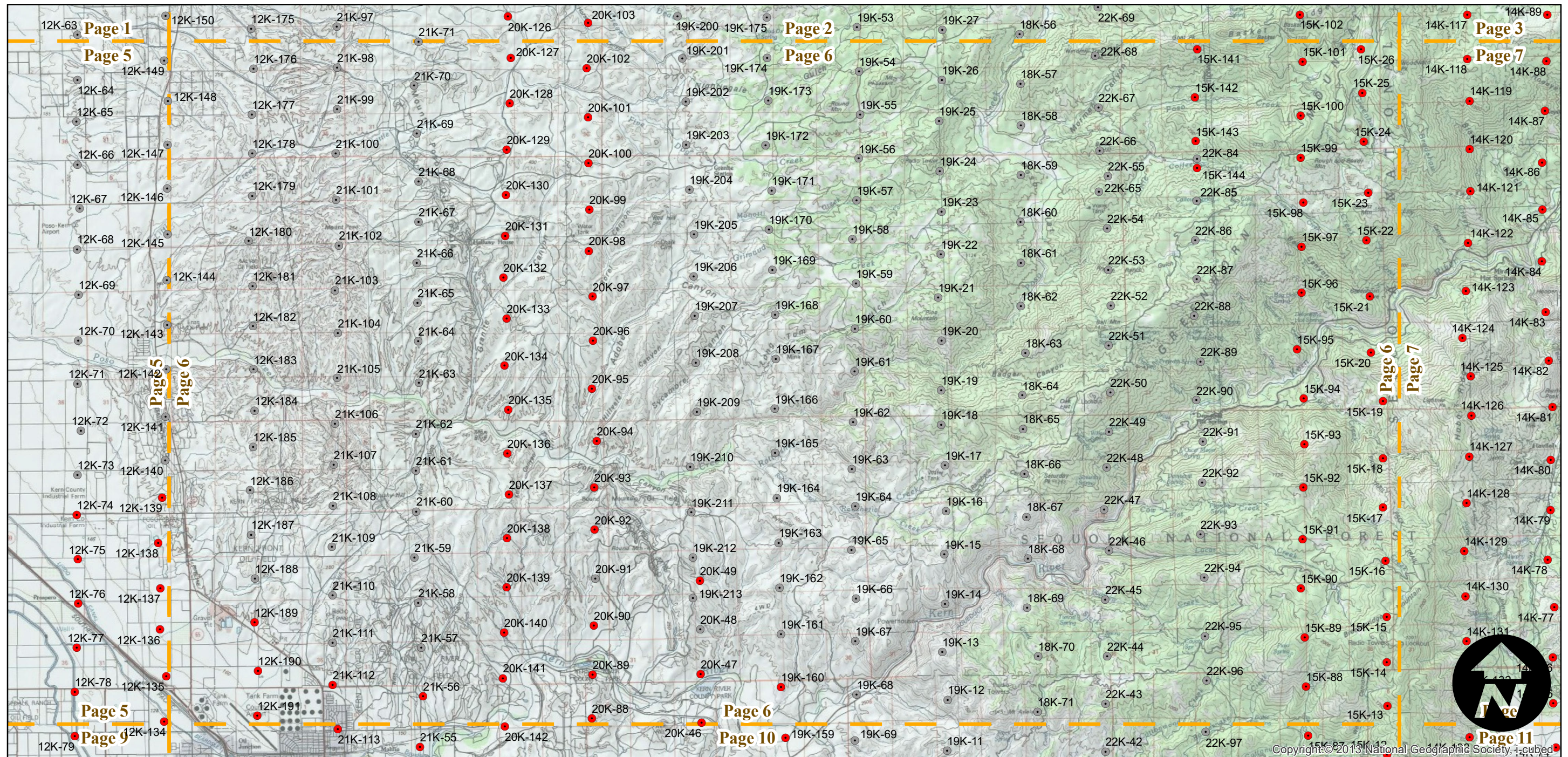
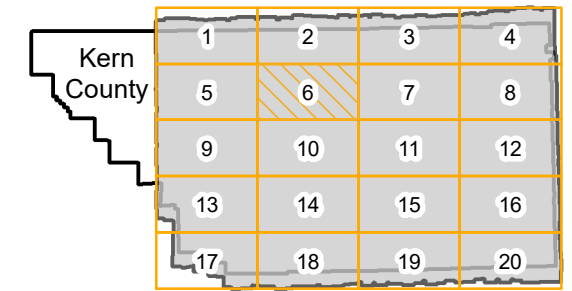
19K: 6, 7, 8, 9, 10, 11, 68, 69, 70, 71, 72, 73, 74, 75, 87, 88, 89, 90, 91, 134, 135, 136, 137, 138, 139, 140, 153, 156, 159, 158, 159, 160, 161, 211, 212, 213

20K: 23, 24, 41 42, 43, 44, 45, 46, 47

22K: 35, 36

- MIL owns frame
- MIL does not own frame

FLIGHT LOCATION



ABL-1952

Counties: Kern
 Flight date(s): 10-11-1952 to 12-09-1952
 Scale: 1:20,000
 Overlap: 60%

Complete Metadata:
<http://www.library.ucsb.edu/mil/aerial-photography-tools>

Note: 18" x 18" prints of the following frames are located in the oversize collection:

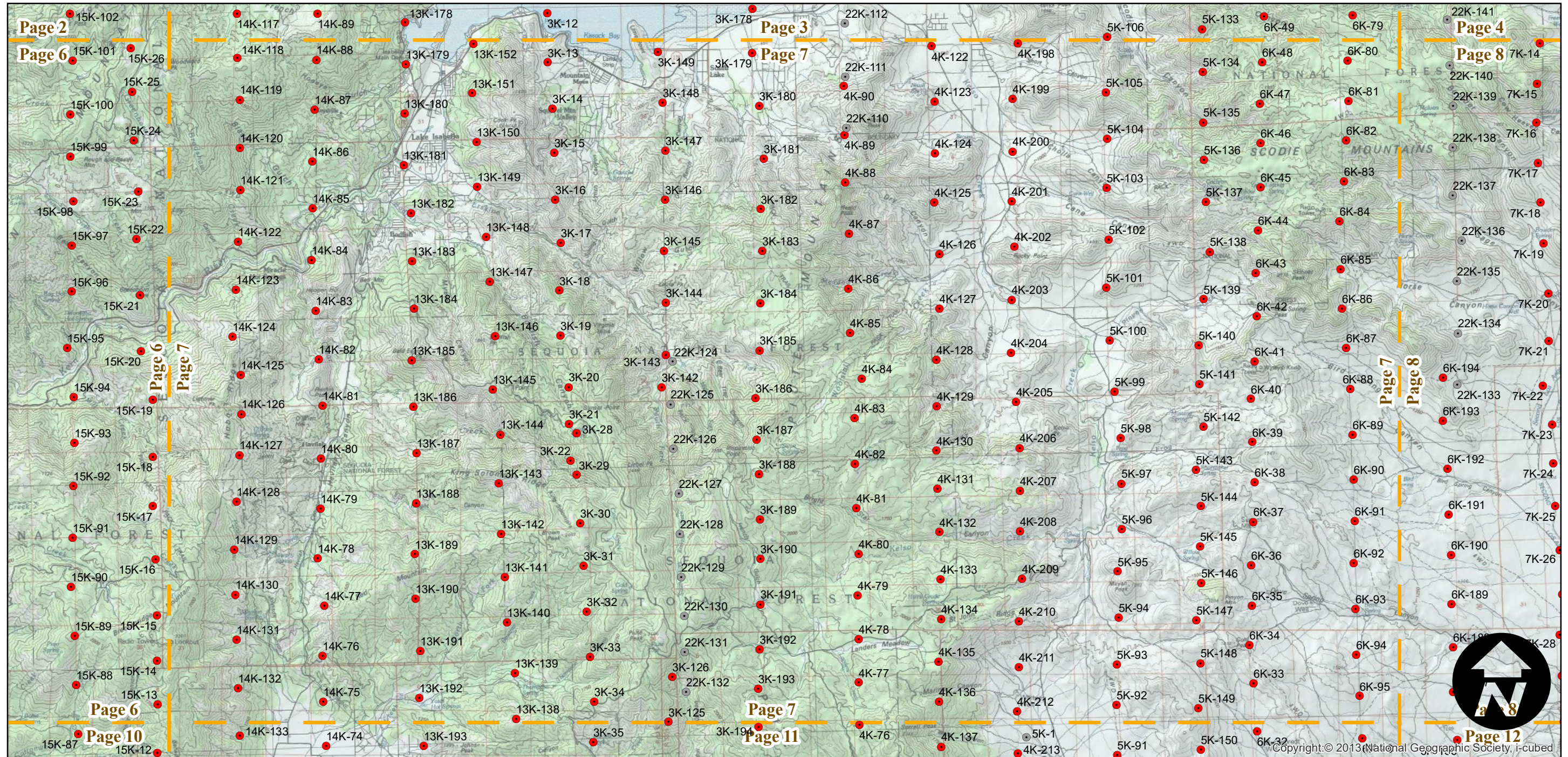
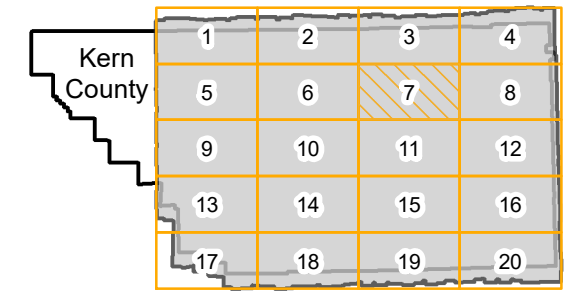
19K: 6, 7, 8, 9, 10, 11, 68, 69, 70, 71, 72, 73, 74, 75, 87, 88, 89, 90, 91, 134, 135, 136, 137, 138, 139, 140, 153, 156, 159, 158, 159, 160, 161, 211, 212, 213

20K: 23, 24, 41 42, 43, 44, 45, 46, 47

22K: 35, 36

- MIL owns frame
- MIL does not own frame

FLIGHT LOCATION



0 2.5 5 10 Miles

Index to Aerial Photography
 Page 7 of 20

Scale of this index: 1:150,000

Copyright © 2013 National Geographic Society, i-cubed

ABL-1952

Counties: Kern
 Flight date(s): 10-11-1952 to 12-09-1952
 Scale: 1:20,000
 Overlap: 60%

Complete Metadata:
<http://www.library.ucsb.edu/mil/aerial-photography-tools>

Note: 18" x 18" prints of the following frames are located in the oversize collection:

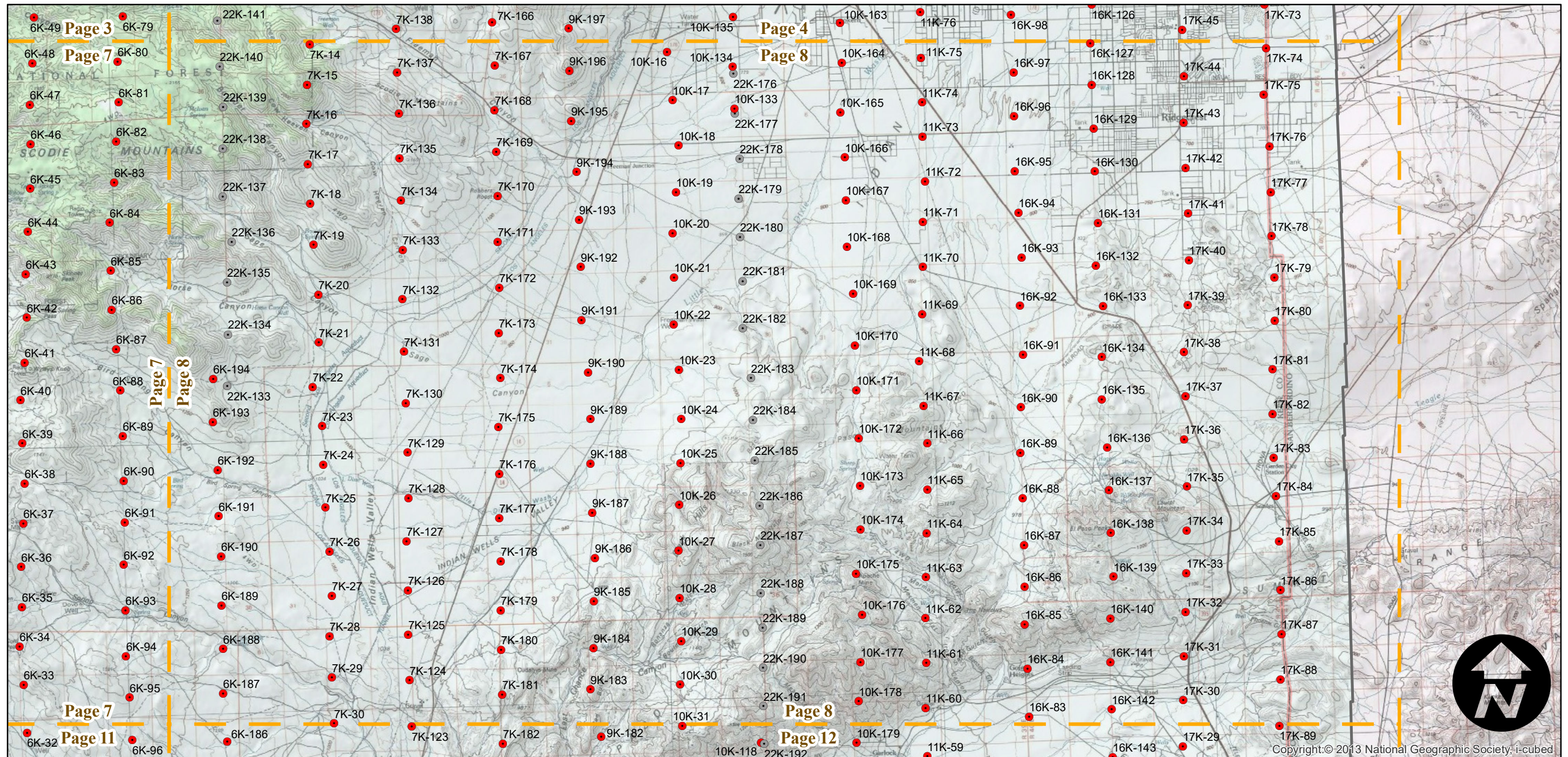
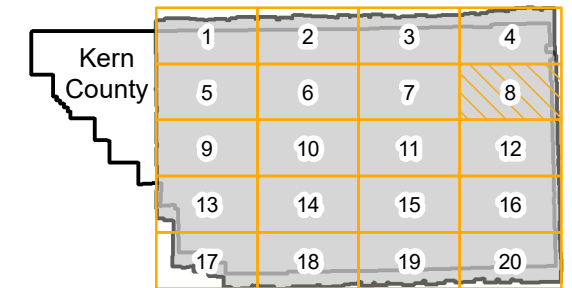
19K: 6, 7, 8, 9, 10, 11, 68, 69, 70, 71, 72, 73, 74, 75, 87, 88, 89, 90, 91, 134, 135, 136, 137, 138, 139, 140, 153, 156, 159, 158, 159, 160, 161, 211, 212, 213

20K: 23, 24, 41 42, 43, 44, 45, 46, 47

22K: 35, 36

- MIL owns frame
- MIL does not own frame

FLIGHT LOCATION



ABL-1952

Counties: Kern
 Flight date(s): 10-11-1952 to 12-09-1952
 Scale: 1:20,000
 Overlap: 60%

Complete Metadata:
<http://www.library.ucsb.edu/mil/aerial-photography-tools>

Note: 18" x 18" prints of the following frames are located in the oversize collection:

19K: 6, 7, 8, 9, 10, 11, 68, 69, 70, 71, 72, 73, 74, 75, 87, 88, 89, 90, 91, 134, 135, 136, 137, 138, 139, 140, 153, 156, 159, 158, 159, 160, 161, 211, 212, 213

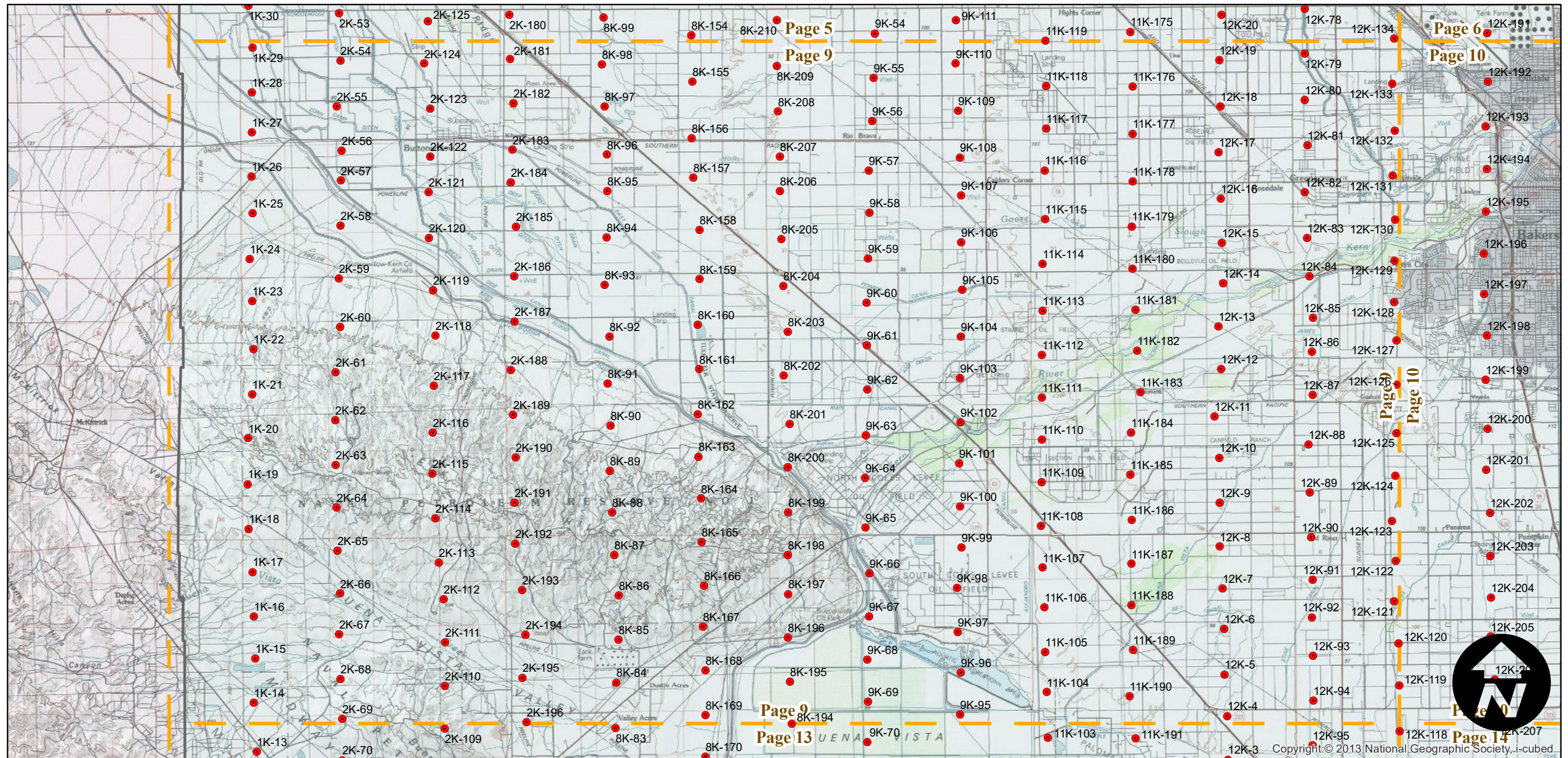
20K: 23, 24, 41 42, 43, 44, 45, 46, 47

22K: 35, 36

- MIL owns frame
- MIL does not own frame

FLIGHT LOCATION

Kern County	1	2	3	4
	5	6	7	8
	9	10	11	12
	13	14	15	16
	17	18	19	20



0 2.5 5 10 Miles

Index to Aerial Photography
 Page 9 of 20

Scale of this index: 1:150,000

ABL-1952

Counties: Kern
 Flight date(s): 10-11-1952 to 12-09-1952
 Scale: 1:20,000
 Overlap: 60%

Complete Metadata:
<http://www.library.ucsb.edu/mil/aerial-photography-tools>

Note: 18" x 18" prints of the following frames are located in the oversize collection:

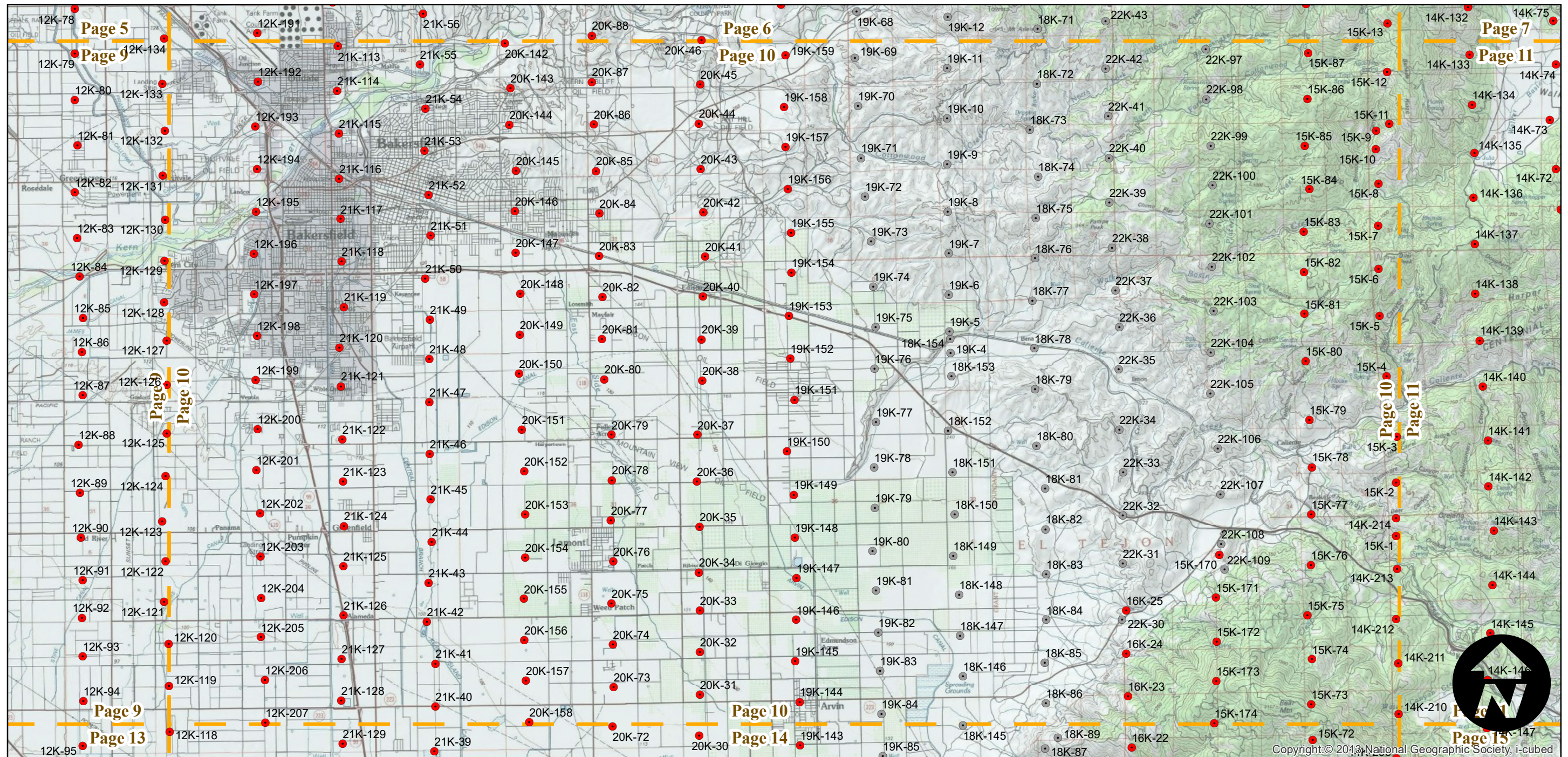
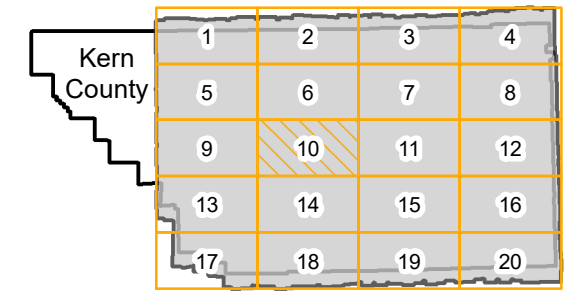
19K: 6, 7, 8, 9, 10, 11, 68, 69, 70, 71, 72, 73, 74, 75, 87, 88, 89, 90, 91, 134, 135, 136, 137, 138, 139, 140, 153, 156, 159, 158, 159, 160, 161, 211, 212, 213

20K: 23, 24, 41 42, 43, 44, 45, 46, 47

22K: 35, 36

- MIL owns frame
- MIL does not own frame

FLIGHT LOCATION



0 2.5 5 10 Miles

Index to Aerial Photography
 Page 10 of 20

Scale of this index: 1:150,000

Copyright © 2013 National Geographic Society, i-cubed

ABL-1952

Counties: Kern
 Flight date(s): 10-11-1952 to 12-09-1952
 Scale: 1:20,000
 Overlap: 60%

Complete Metadata:
<http://www.library.ucsb.edu/mil/aerial-photography-tools>

- MIL owns frame
- MIL does not own frame

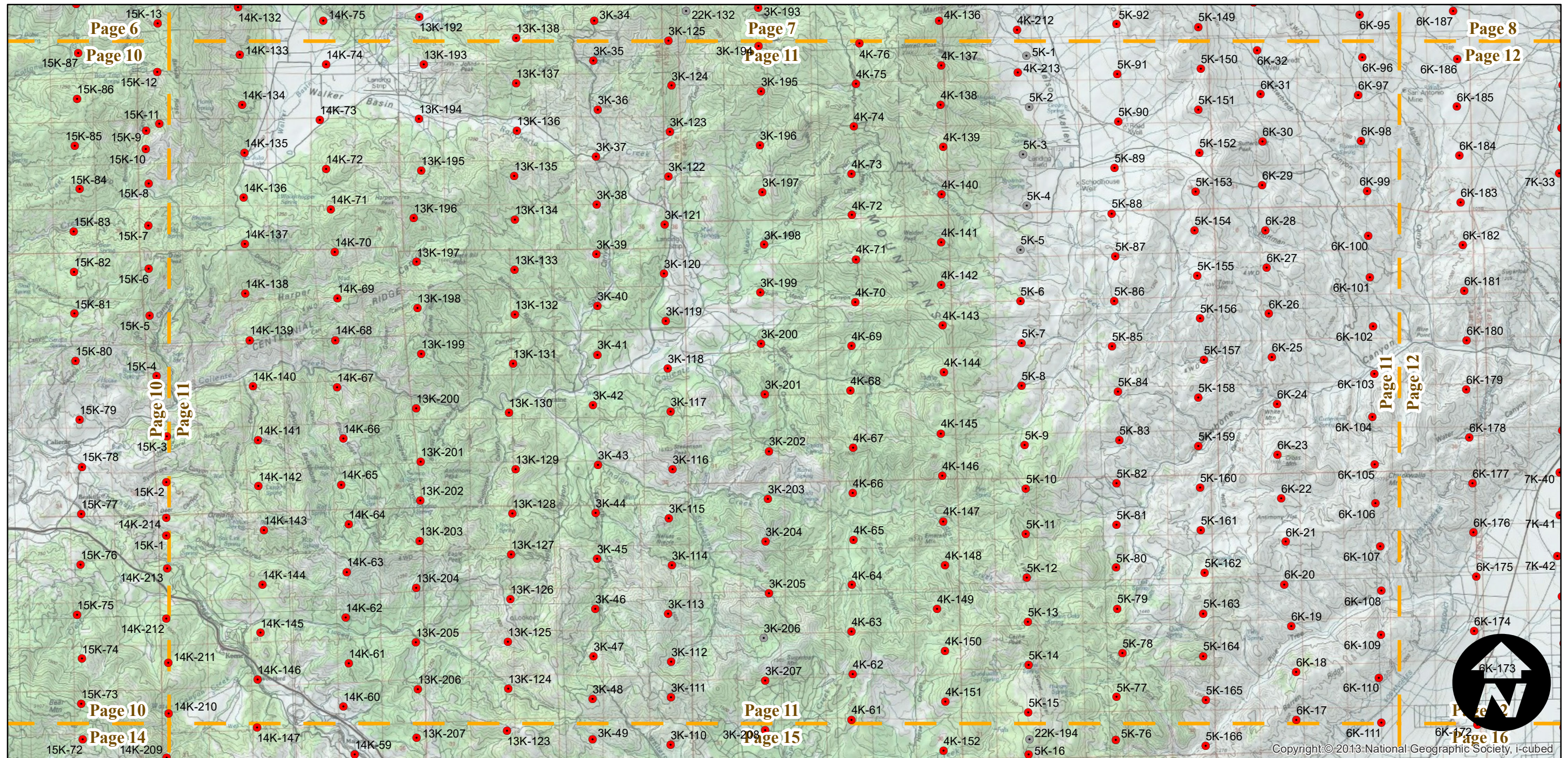
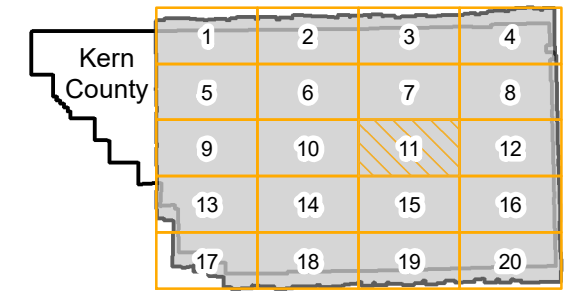
Note: 18" x 18" prints of the following frames are located in the oversize collection:

19K: 6, 7, 8, 9, 10, 11, 68, 69, 70, 71, 72, 73, 74, 75, 87, 88, 89, 90, 91, 134, 135, 136, 137, 138, 139, 140, 153, 156, 159, 158, 159, 160, 161, 211, 212, 213

20K: 23, 24, 41 42, 43, 44, 45, 46, 47

22K: 35, 36

FLIGHT LOCATION



0 2.5 5 10 Miles

Index to Aerial Photography
 Page 11 of 20

Scale of this index: 1:150,000

Copyright: © 2013 National Geographic Society, i-cubed

ABL-1952

Counties: Kern
 Flight date(s): 10-11-1952 to 12-09-1952
 Scale: 1:20,000
 Overlap: 60%

Complete Metadata:
<http://www.library.ucsb.edu/mil/aerial-photography-tools>

Note: 18" x 18" prints of the following frames are located in the oversize collection:

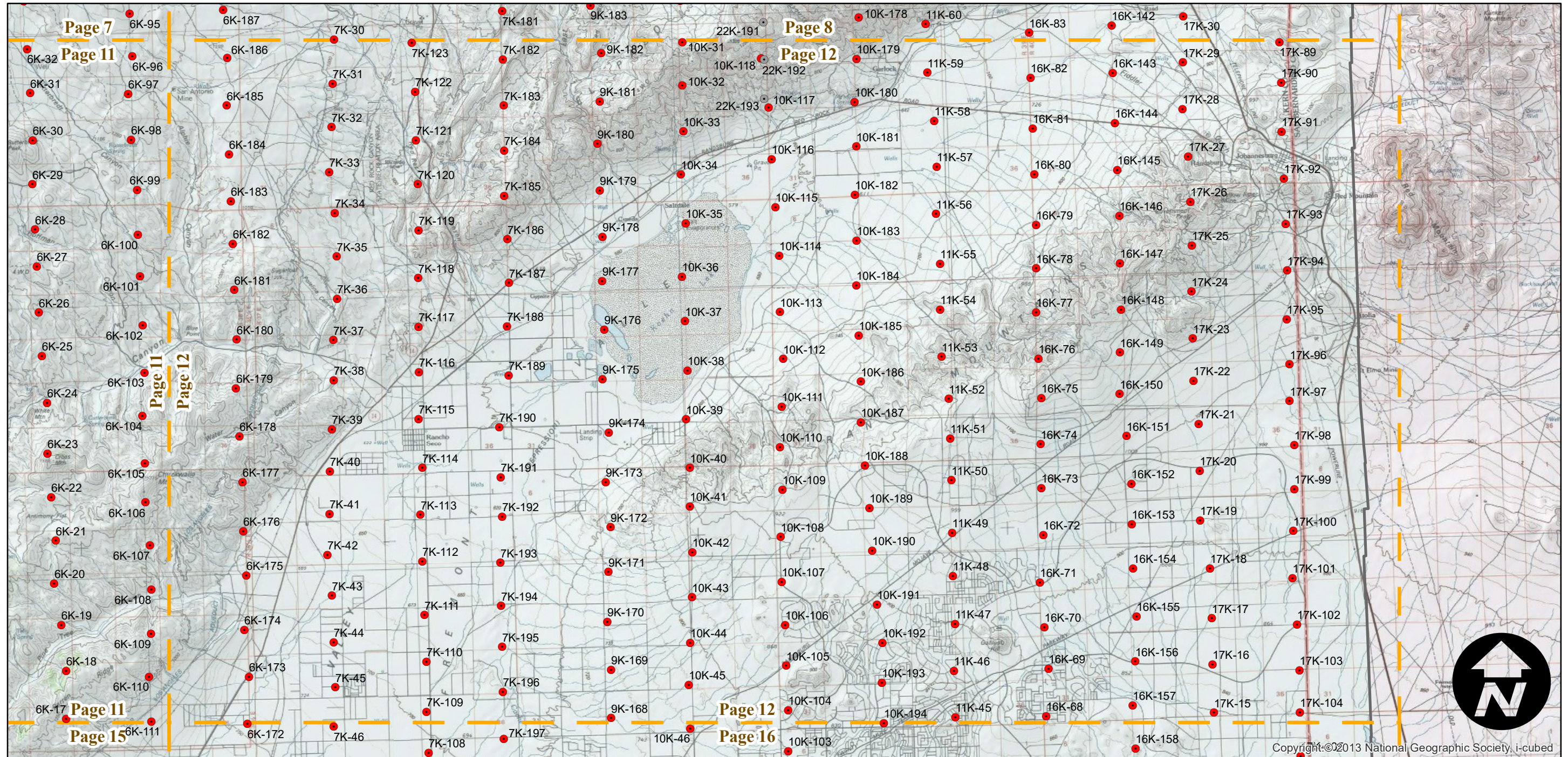
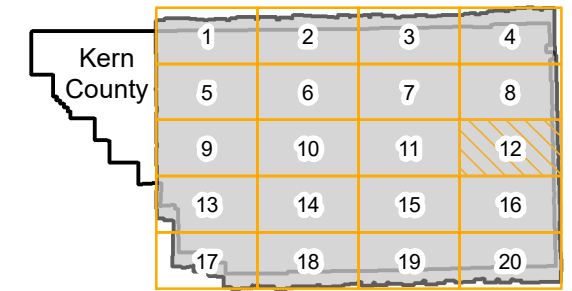
19K: 6, 7, 8, 9, 10, 11, 68, 69, 70, 71, 72, 73, 74, 75, 87, 88, 89, 90, 91, 134, 135, 136, 137, 138, 139, 140, 153, 156, 159, 158, 159, 160, 161, 211, 212, 213

20K: 23, 24, 41 42, 43, 44, 45, 46, 47

22K: 35, 36

- MIL owns frame
- MIL does not own frame

FLIGHT LOCATION



0 2.5 5 10 Miles

Index to Aerial Photography
 Page 12 of 20

Scale of this index: 1:150,000

ABL-1952

Counties: Kern
 Flight date(s): 10-11-1952 to 12-09-1952
 Scale: 1:20,000
 Overlap: 60%

Complete Metadata:
<http://www.library.ucsb.edu/mil/aerial-photography-tools>

- MIL owns frame
- MIL does not own frame

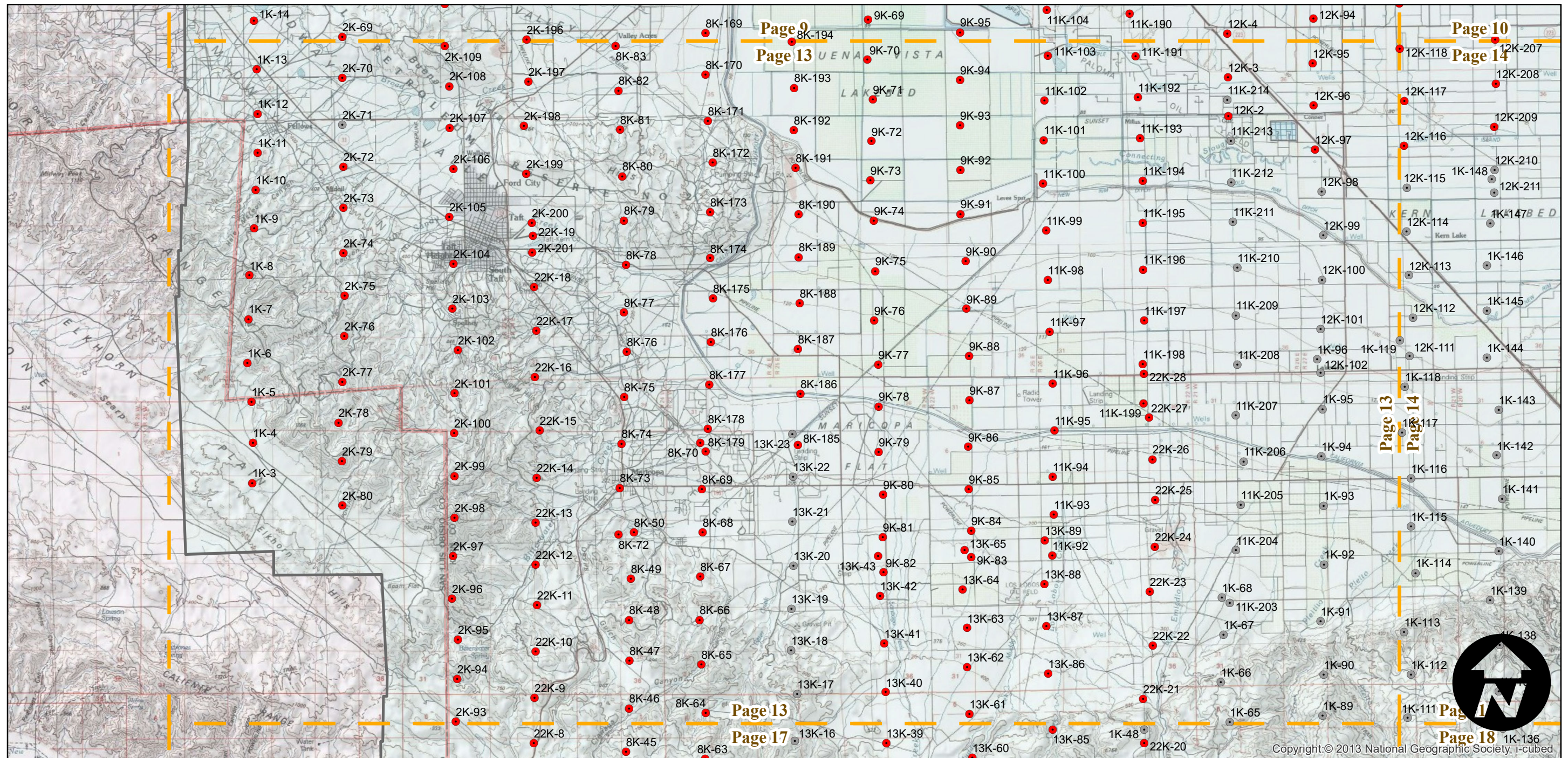
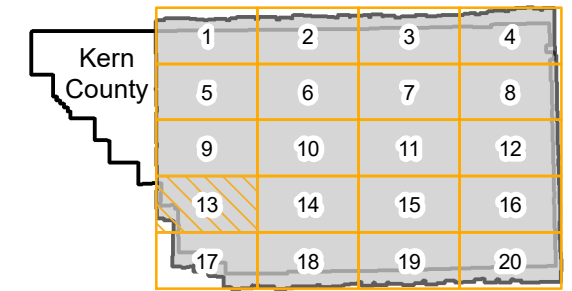
Note: 18" x 18" prints of the following frames are located in the oversize collection:

19K: 6, 7, 8, 9, 10, 11, 68, 69, 70, 71, 72, 73, 74, 75, 87, 88, 89, 90, 91, 134, 135, 136, 137, 138, 139, 140, 153, 156, 159, 158, 159, 160, 161, 211, 212, 213

20K: 23, 24, 41 42, 43, 44, 45, 46, 47

22K: 35, 36

FLIGHT LOCATION



0 2.5 5 10 Miles

Index to Aerial Photography
 Page 13 of 20

Scale of this index: 1:150,000

Copyright:© 2013 National Geographic Society, i-cubed

ABL-1952

Counties: Kern
 Flight date(s): 10-11-1952 to 12-09-1952
 Scale: 1:20,000
 Overlap: 60%

Complete Metadata:
<http://www.library.ucsb.edu/mil/aerial-photography-tools>

Note: 18" x 18" prints of the following frames are located in the oversize collection:

19K: 6, 7, 8, 9, 10, 11, 68, 69, 70, 71, 72, 73, 74, 75, 87, 88, 89, 90, 91, 134, 135, 136, 137, 138, 139, 140, 153, 156, 159, 158, 159, 160, 161, 211, 212, 213

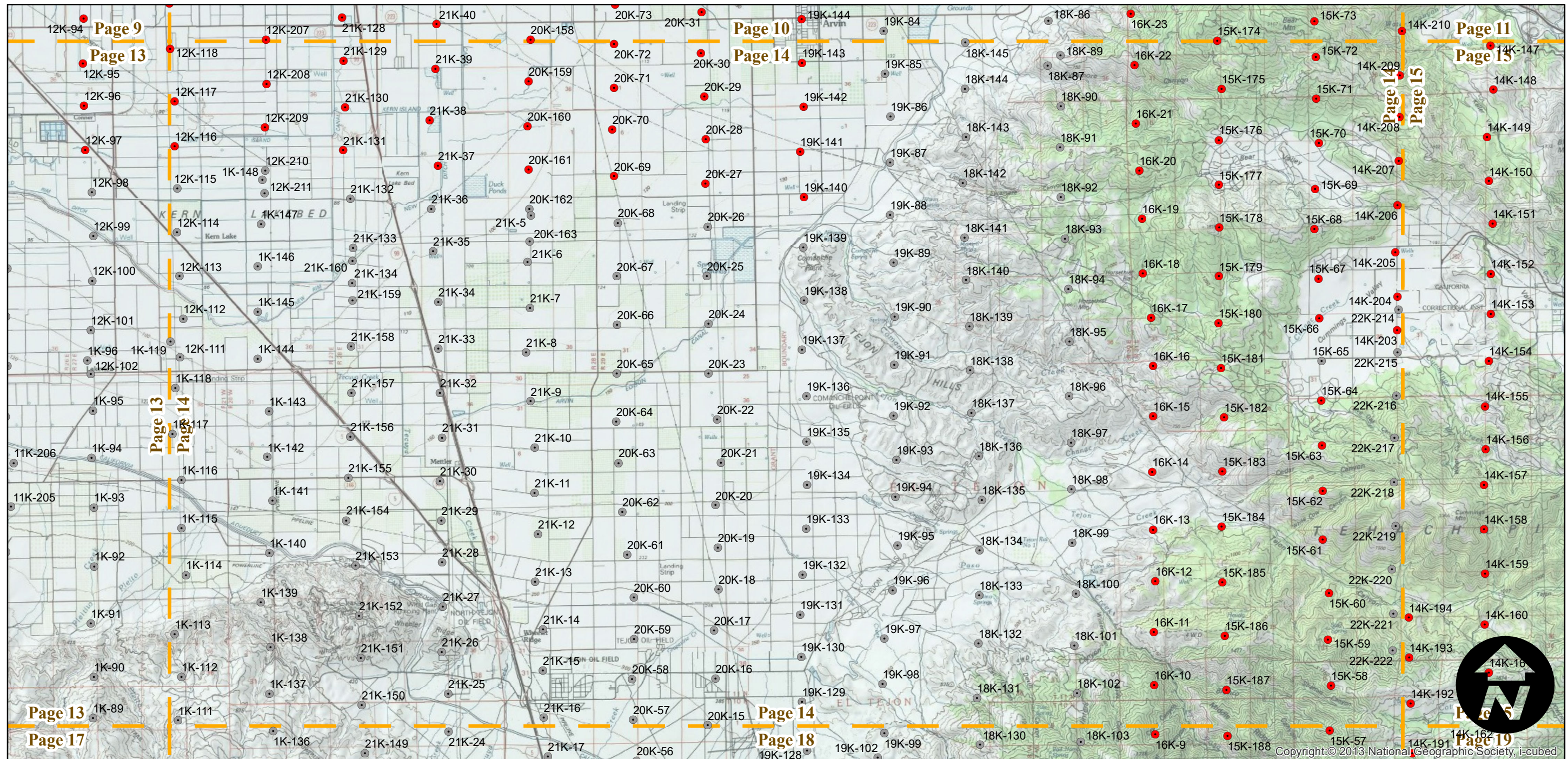
20K: 23, 24, 41 42, 43, 44, 45, 46, 47

22K: 35, 36

- MIL owns frame
- MIL does not own frame

FLIGHT LOCATION

Kern County	1	2	3	4
	5	6	7	8
	9	10	11	12
	13	14	15	16
	17	18	19	20



0 2.5 5 10 Miles

Index to Aerial Photography
 Page 14 of 20

Scale of this index: 1:150,000

Copyright © 2013 National Geographic Society, i-cubed

ABL-1952

Counties: Kern
 Flight date(s): 10-11-1952 to 12-09-1952
 Scale: 1:20,000
 Overlap: 60%

Complete Metadata:
<http://www.library.ucsb.edu/mil/aerial-photography-tools>

Note: 18" x 18" prints of the following frames are located in the oversize collection:

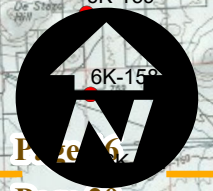
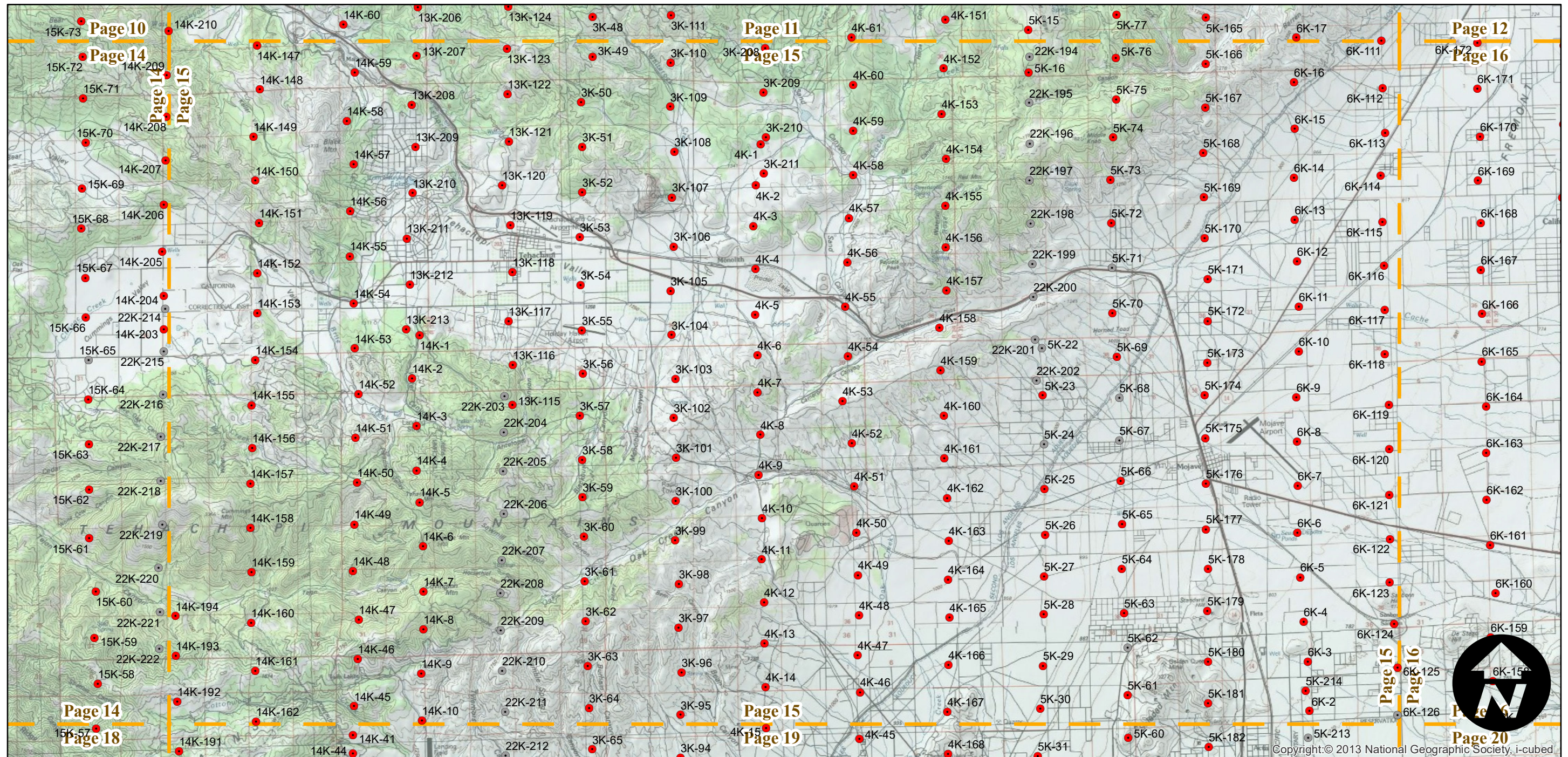
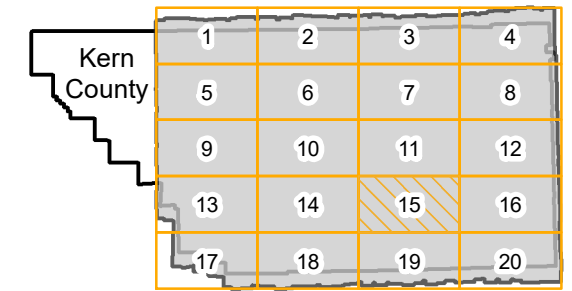
19K: 6, 7, 8, 9, 10, 11, 68, 69, 70, 71, 72, 73, 74, 75, 87, 88, 89, 90, 91, 134, 135, 136, 137, 138, 139, 140, 153, 156, 159, 158, 159, 160, 161, 211, 212, 213

20K: 23, 24, 41 42, 43, 44, 45, 46, 47

22K: 35, 36

- MIL owns frame
- MIL does not own frame

FLIGHT LOCATION



ABL-1952

Counties: Kern
 Flight date(s): 10-11-1952 to 12-09-1952
 Scale: 1:20,000
 Overlap: 60%

Complete Metadata:
<http://www.library.ucsb.edu/mil/aerial-photography-tools>

Note: 18" x 18" prints of the following frames are located in the oversize collection:

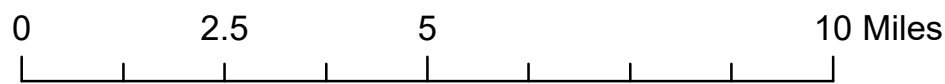
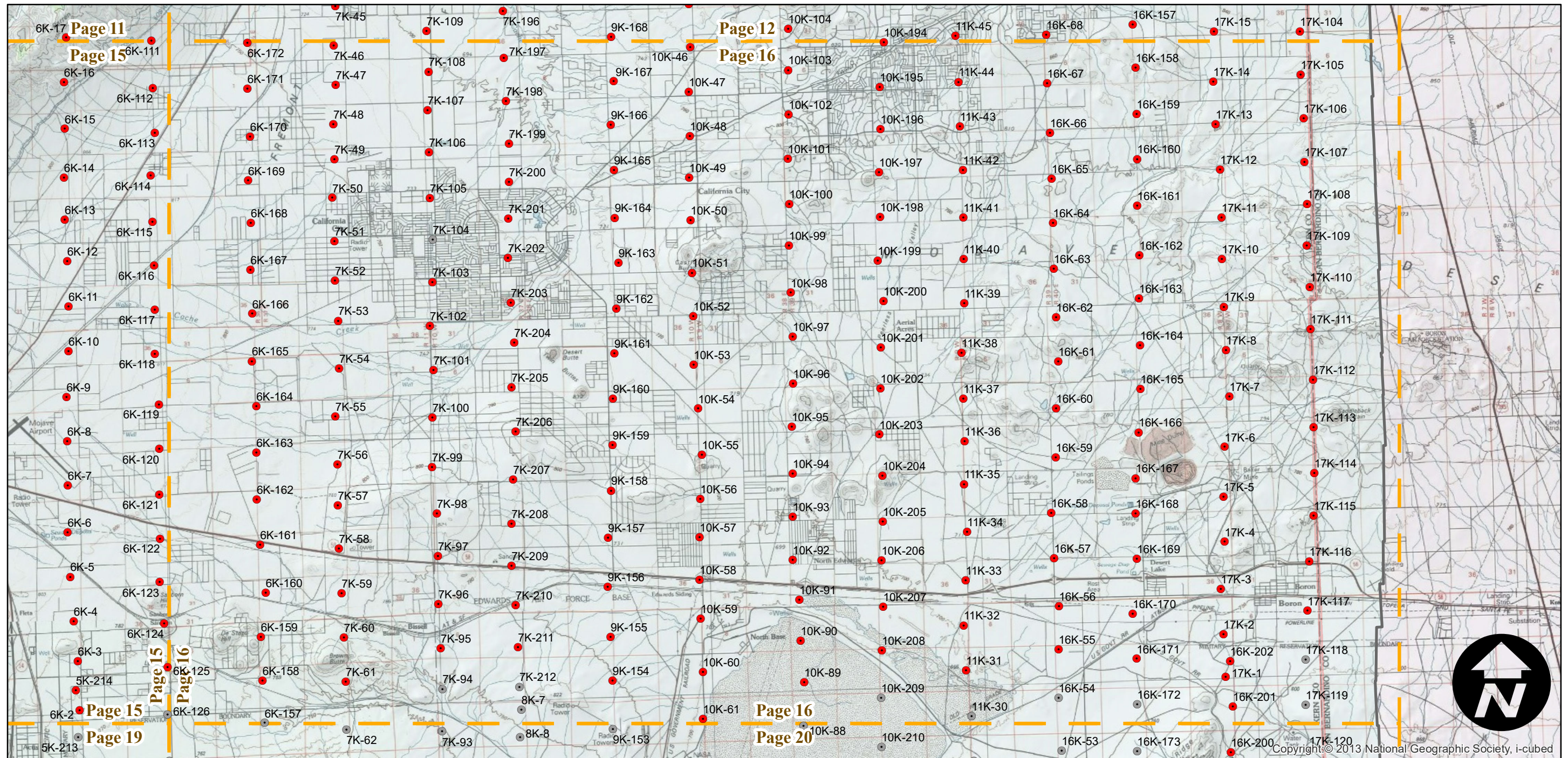
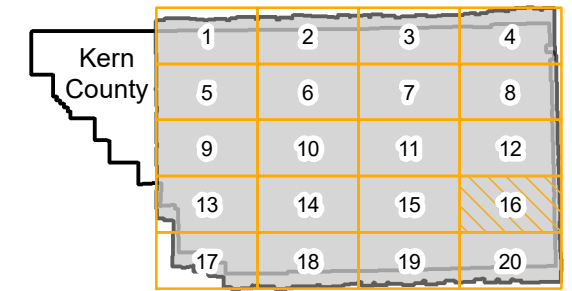
19K: 6, 7, 8, 9, 10, 11, 68, 69, 70, 71, 72, 73, 74, 75, 87, 88, 89, 90, 91, 134, 135, 136, 137, 138, 139, 140, 153, 156, 159, 158, 159, 160, 161, 211, 212, 213

20K: 23, 24, 41 42, 43, 44, 45, 46, 47

22K: 35, 36

- MIL owns frame
- MIL does not own frame

FLIGHT LOCATION



ABL-1952

Counties: Kern
 Flight date(s): 10-11-1952 to 12-09-1952
 Scale: 1:20,000
 Overlap: 60%

Complete Metadata:
<http://www.library.ucsb.edu/mil/aerial-photography-tools>

Note: 18" x 18" prints of the following frames are located in the oversize collection:

19K: 6, 7, 8, 9, 10, 11, 68, 69, 70, 71, 72, 73, 74, 75, 87, 88, 89, 90, 91, 134, 135, 136, 137, 138, 139, 140, 153, 156, 159, 158, 159, 160, 161, 211, 212, 213

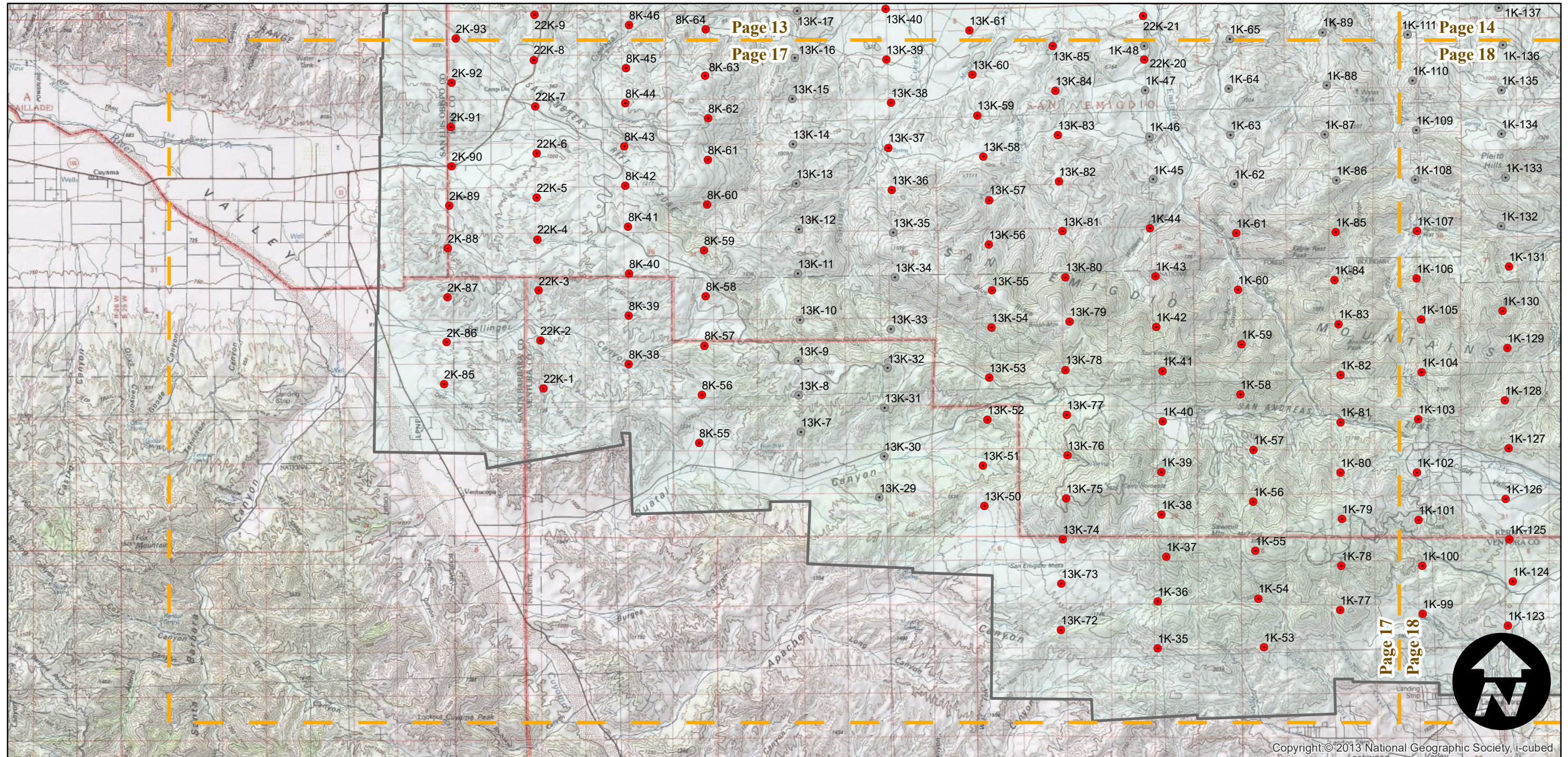
20K: 23, 24, 41 42, 43, 44, 45, 46, 47

22K: 35, 36

- MIL owns frame
- MIL does not own frame

FLIGHT LOCATION

Kern County	1	2	3	4
	5	6	7	8
	9	10	11	12
	13	14	15	16
	17	18	19	20



ABL-1952

Counties: Kern
 Flight date(s): 10-11-1952 to 12-09-1952
 Scale: 1:20,000
 Overlap: 60%

Complete Metadata:
<http://www.library.ucsb.edu/mil/aerial-photography-tools>

- MIL owns frame
- MIL does not own frame

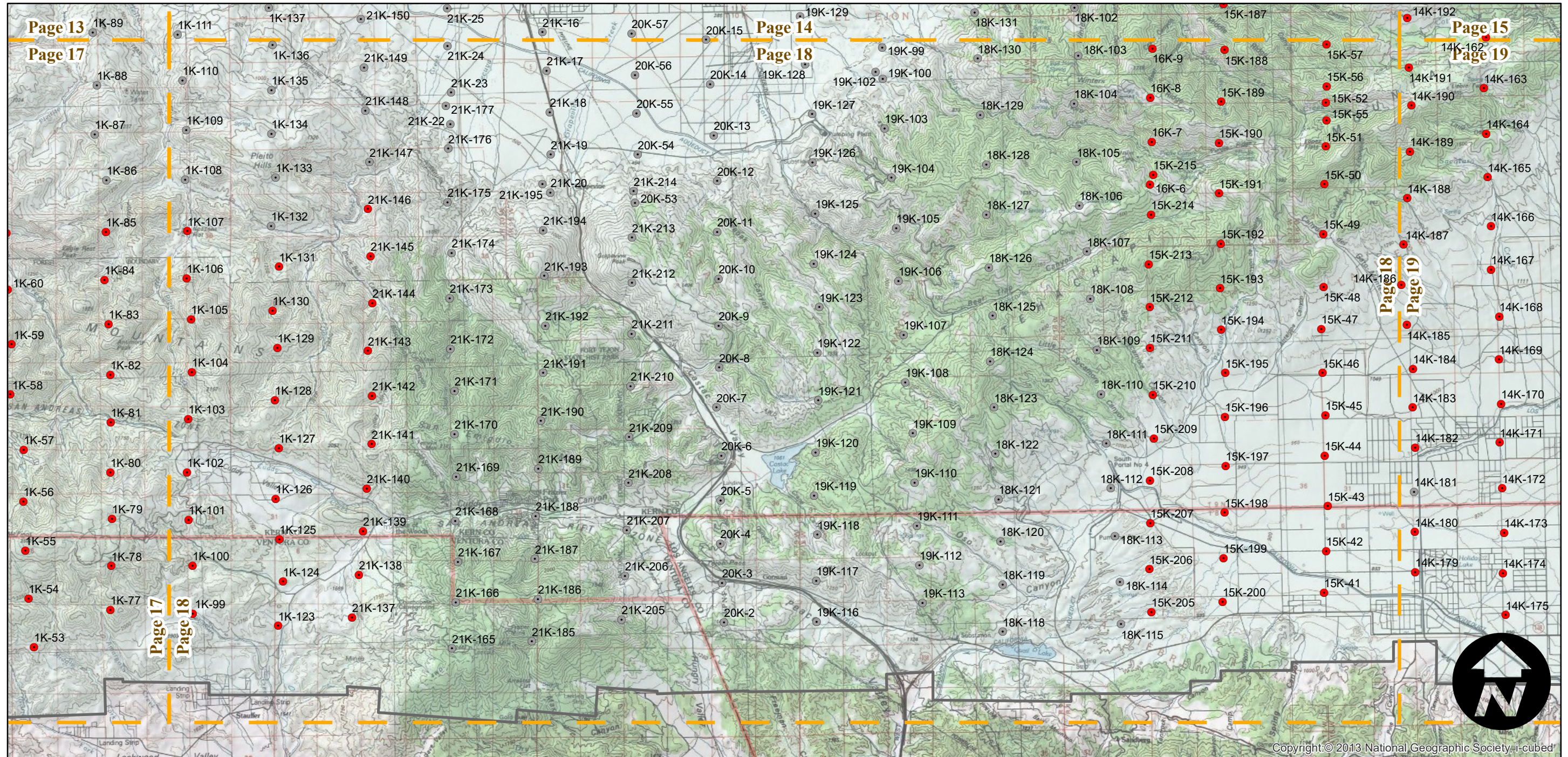
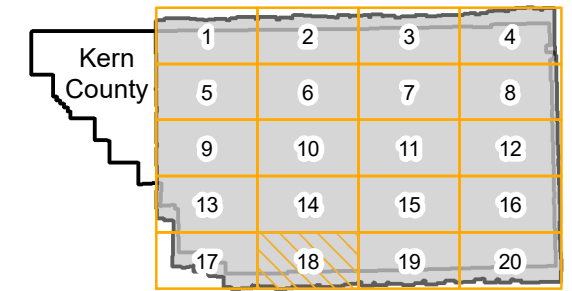
Note: 18" x 18" prints of the following frames are located in the oversize collection:

19K: 6, 7, 8, 9, 10, 11, 68, 69, 70, 71, 72, 73, 74, 75, 87, 88, 89, 90, 91, 134, 135, 136, 137, 138, 139, 140, 153, 156, 159, 158, 159, 160, 161, 211, 212, 213

20K: 23, 24, 41 42, 43, 44, 45, 46, 47

22K: 35, 36

FLIGHT LOCATION



ABL-1952

Counties: Kern
 Flight date(s): 10-11-1952 to 12-09-1952
 Scale: 1:20,000
 Overlap: 60%

Complete Metadata:
<http://www.library.ucsb.edu/mil/aerial-photography-tools>

- MIL owns frame
- MIL does not own frame

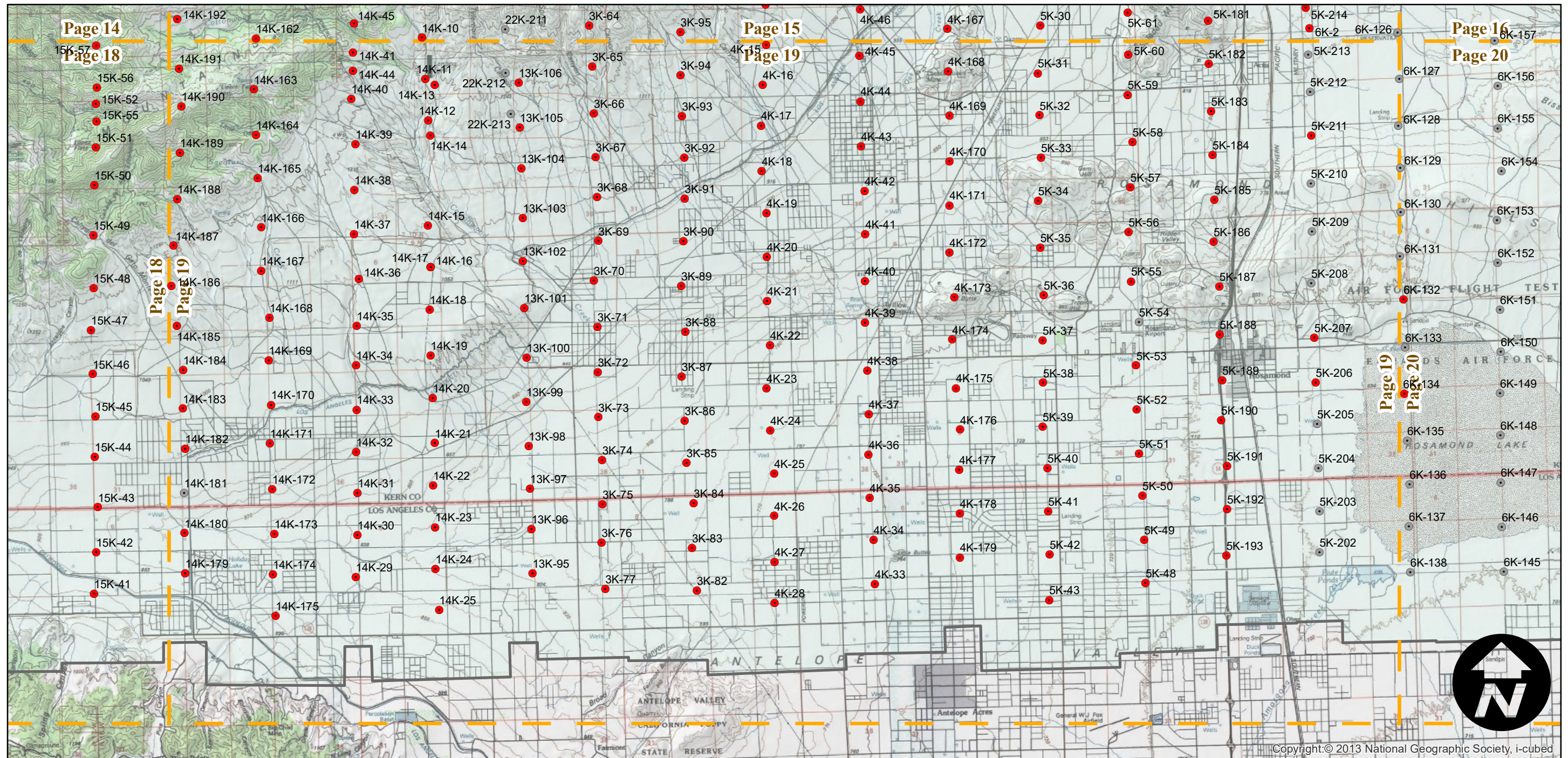
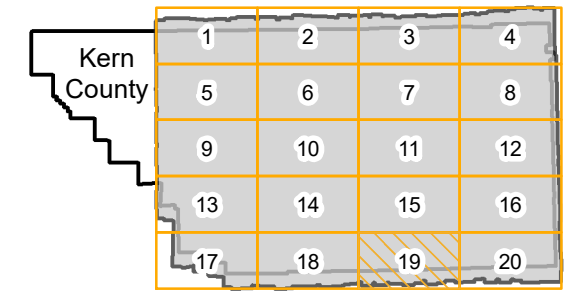
Note: 18" x 18" prints of the following frames are located in the oversize collection:

19K: 6, 7, 8, 9, 10, 11, 68, 69, 70, 71, 72, 73, 74, 75, 87, 88, 89, 90, 91, 134, 135, 136, 137, 138, 139, 140, 153, 156, 159, 158, 159, 160, 161, 211, 212, 213

20K: 23, 24, 41 42, 43, 44, 45, 46, 47

22K: 35, 36

FLIGHT LOCATION



ABL-1952

Counties: Kern
 Flight date(s): 10-11-1952 to 12-09-1952
 Scale: 1:20,000
 Overlap: 60%

Complete Metadata:
<http://www.library.ucsb.edu/mil/aerial-photography-tools>

Note: 18" x 18" prints of the following frames are located in the oversize collection:

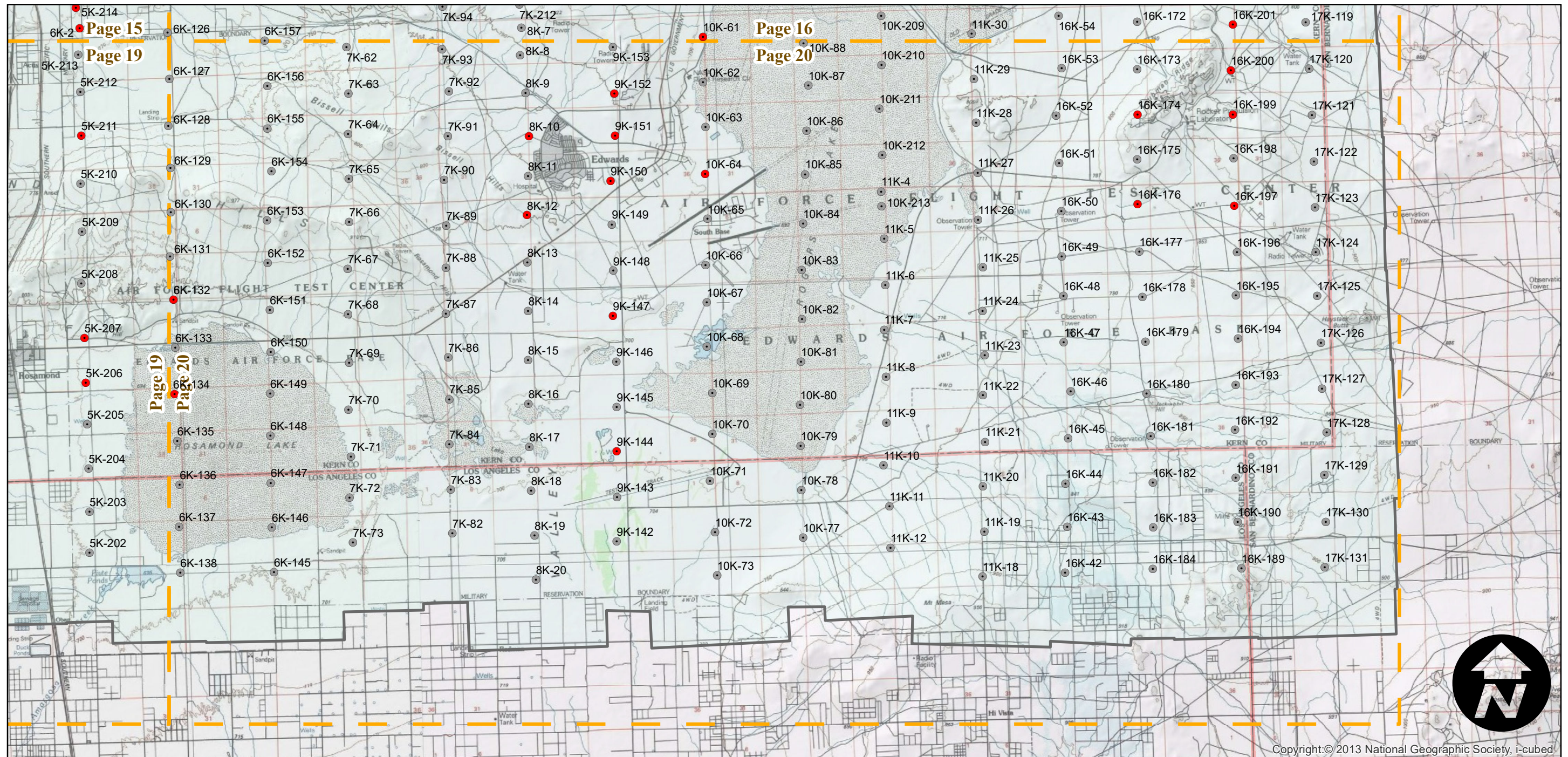
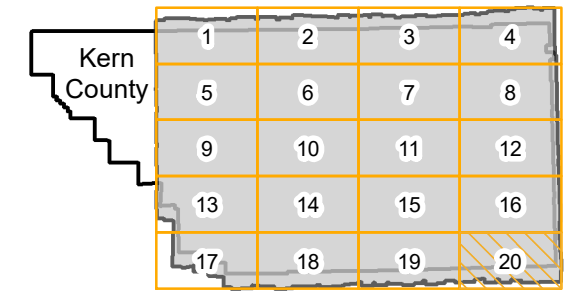
19K: 6, 7, 8, 9, 10, 11, 68, 69, 70, 71, 72, 73, 74, 75, 87, 88, 89, 90, 91, 134, 135, 136, 137, 138, 139, 140, 153, 156, 159, 158, 159, 160, 161, 211, 212, 213

20K: 23, 24, 41 42, 43, 44, 45, 46, 47

22K: 35, 36

- MIL owns frame
- MIL does not own frame

FLIGHT LOCATION



0 2.5 5 10 Miles

Index to Aerial Photography
 Page 20 of 20

Scale of this index: 1:150,000

Copyright: © 2013 National Geographic Society, i-cubed